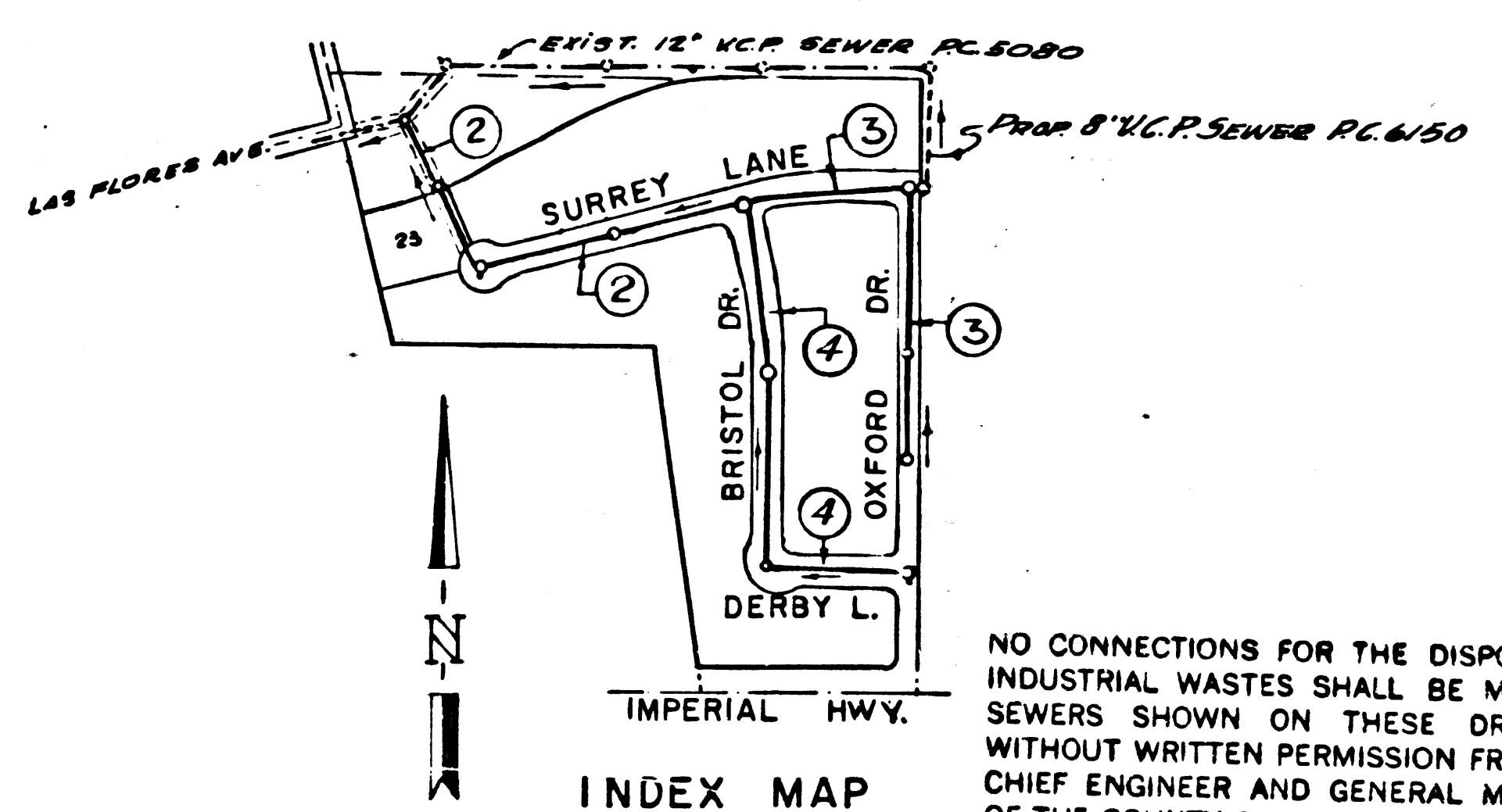


**BENCH MARK**  
 54 4037-L B.M. N.E. End  
 of 1st 5150 House W. 1563 Imp. Hwy.  
 2 55' N. of Imperial Highway  
 764' W. of E. of Sanjo  
 Gertrudes Avenue  
 Elev. 253.424 (1955 ADJ.)  
 (LA MIRADA)

- NOTES:**
- NO CONSTRUCTION WILL BE PERMITTED IN FILLED AREAS UNLESS ACCEPTABLE CERTIFICATION IS SUBMITTED TO THE CONSTRUCTION DIVISION OF THE CITY ENGINEER'S DEPARTMENT THAT RELATIVE CONSTRUCTION IS GREATER THAN 40%.
  - IF CONSTRUCTION IS LESS THAN 40%, THE SEWER MUST BE CRADLED AS SHOWN ON THE PLANS PER S.D. 106, OR HAVE A SPECIAL BASE GRADE PER S.A. 179 CASE III. SPECIAL MANHOLE DEPTH MUST BE INSTALLED PER S.A. 113 AS INDICATED ON THE PLANS.
  - IF CONSTRUCTION IS GREATER THAN 40%, CRADLING AND SPECIAL M.H. DEPTH ARE NOT REQUIRED.
  - ALL STATE AND LOCAL TRENCH SAFETY ORDINANCES WILL BE RIGIDLY ENFORCED.

- NOTES:**
- PROVIDE STAKES ON THE PROPERTY LINE OR PROPERTY LINES PRODUCED AT RIGHT ANGLES TO THE SEWER LINE AT THE CENTER LINE OF EACH MANHOLE.
  - NO REPRESENTATIVE OF THE CITY ENGINEER WILL SURVEY OR LAY OUT ANY PORTION OF THE WORK.
  - THE OWNER OR HIS AUTHORIZED REPRESENTATIVE SHALL FURNISH THE CITY ENGINEER WITH GRADE SHEETS AND STATIONING FOR ALL HOUSE LATERALS AND Y BRANCHES AND SHALL PROVIDE STAKES FOR THEM AT THEIR PROPER LOCATION WITH STATIONING PLAINLY MARKED. ANY CHANGE IN LOCATION SHALL BE REQUESTED IN WRITING BY THE OWNER OR HIS REPRESENTATIVE.
  - THE PRIVATE ENGINEER SHALL FURNISH THE HOUSE LATERAL DEPTH AT THE PROPERTY LINE BELOW THE TOP OF CURB ELEVATION FOR EACH HOUSE LATERAL ON THE GRADE SHEET.
  - NO REVISIONS SHALL BE MADE IN THESE PLANS WITHOUT THE APPROVAL OF THE CITY ENGINEER.
  - USE STANDARD MANHOLE FRAMES AND COVERS, S-4117.
  - USE EXTRA STRENGTH PIPE, ALL PIPE IS STANDARD DEPTH, EXCEPT AS NOTED.
  - USE MECHANICAL COMPRESSION JOINTS FOR ALL V.C.P. PER SPECS. SECS. M & N, 49.
  - ASSURANCE ALL TRENCH WITHIN RAYED AREA TO MEET L.A. COUNTY ROAD DEPT. OR CALIF. STATE HIGHWAY REQUIREMENTS IN ACCORDANCE WITH PERMITS.
  - ENCASE FOUR FEET OF SEWER AT POINTS OF INTERFERENCE WITH POLES, CASE III, S-4172.
  - HOUSE LATERALS TO BE CONSTRUCTED WITH INVERTS AT PROPERTY LINE 6 FEET BELOW CURB GRADE, EXCEPT AS NOTED.
  - ALL STRUCTURES SHALL BE BRICK SEWER STRUCTURES, S.G. 104, PRECAST CONCRETE MANHOLES PER S.D. 135 OR S.D. 173 MAY BE USED AS AN ALTERNATE IN LOCATIONS APPROVED BY THE CITY ENGINEER.
  - FOR ALLOWABLE LEAKAGE TEST USE FORMULA NO. 1 SPEC'S. SEC. 84.
  - MANHOLE TOPS IN UNIMPROVED RIGHTS-OF-WAY TO BE SIX INCHES ABOVE FINISHED GRADE.
  - THE CONTRACTOR SHALL NOTIFY THE CONSTRUCTION DIVISION BY TELEPHONE, MADISON 54747, EYE-8181 AT LEAST TWENTY-FOUR HOURS BEFORE STARTING ANY WORK UNDER THIS CONTRACT.
  - STANDARD SPECIFICATIONS MAY BE FOUND IN 1962 ON FILE IN CITY HALL, APPLY IN THE CONSTRUCTION OF THIS PROJECT.



**CONNECTION CHARGES AS INDICATED**  
*By City Engineer 2-17-62*

NO CONNECTIONS FOR THE DISPOSAL OF INDUSTRIAL WASTES SHALL BE MADE TO SEWERS SHOWN ON THESE DRAWINGS WITHOUT WRITTEN PERMISSION FROM THE CHIEF ENGINEER AND GENERAL MANAGER OF THE COUNTY SANITATION DISTRICTS.

**INDEX MAP**  
 SCALE 1" = 400'  
 TRACT NO 26182

TRACT NO. 26182  
 PRIVATE CONTRACT NO. 6297

W.S. 34  
 2 SHEETS; 4 PAGES  
 SCALE: VERT. 1" = 4'  
 HORIZ. 1" = 40'  
 JULY, 1962  
 PREPARED IN THE OFFICES OF  
**HAL HALLDIN & ASSOCIATES**  
 207 West B Street, Ontario, California  
 Yu. A. 5207  
 BY: *Hal Halldin*  
 REG. C. E. NO. 3002

32955

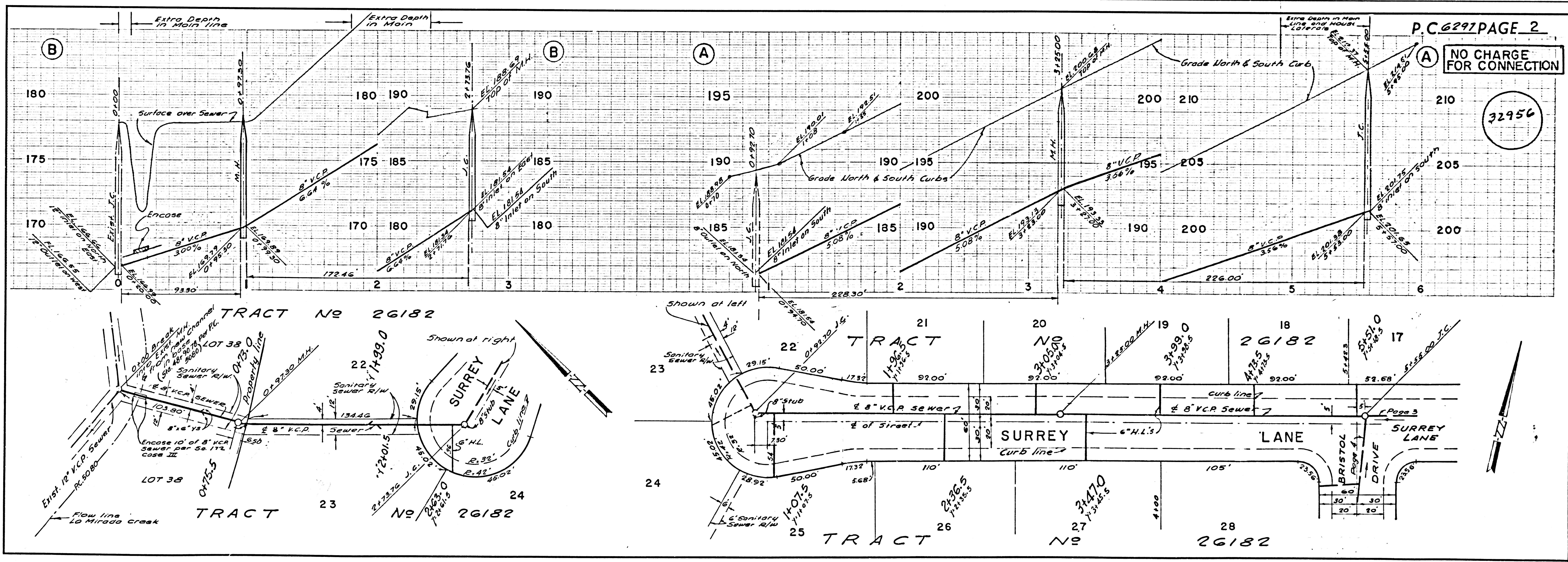
FOR LEGEND SEE PLAN NO. S-A-64

**NOTE:**  
 GRADES TO WHICH THIS IMPROVEMENT IS TO BE CONSTRUCTED ARE SHOWN ON PLANS AND PROFILES. GRADE POINTS FOR TOP OF CURBS, CENTER LINE OF STREETS, OR CENTER LINE OF ALLEYS ARE SHOWN BY CIRCLES ON PROFILES. AT ALL POINTS BETWEEN DESIGNATED POINTS THE GRADE SHALL BE ESTABLISHED SO AS TO CONFORM TO A STRAIGHT LINE DRAWN BETWEEN SAID DESIGNATED POINTS.  
 ELEVATIONS ARE IN FEET ABOVE U.S.C. & G.S. SEA LEVEL DATUM OF 1929.  
 THIS DRAWING AND THE DATA HEREON ARE HEREBY MADE A PART OF THE SPECIFICATIONS. WORK SHALL BE CONSTRUCTED ACCORDING TO SPECIFICATIONS ON FILE IN THE OFFICE OF THE CITY ENGINEER AND SHALL BE PROSECUTED ONLY IN THE PRESENCE OF THE CITY ENGINEER.  
 BEFORE WORK CAN BE STARTED, THE CONTRACTOR MUST OBTAIN A PERMIT TO EXCAVATE IN CITY STREETS FROM THE L.A. COUNTY ROAD DEPT., DISTRICT OFFICE NO. 4, AND MAKE A DEPOSIT WITH THE CITY OF LA MIRADA 10000 LUTHWIELER AVE. SUFFICIENT TO COVER THE COST OF CONSTRUCTION INSPECTION AND RECORD PLANS.  
 APPROVAL OF THIS PLAN BY THE CITY OF LA MIRADA DOES NOT CONSTITUTE A REPRESENTATION AS TO THE ACCURACY OF THE LOCATION OF OR THE EXISTENCE OR NON-EXISTENCE OF ANY UNDERGROUND UTILITY PIPE, GAS STRUCTURE WITHIN THE LIMITS OF THIS PROJECT. THIS NOTE APPLIES TO ALL PAGES.  
 IF WORK IS TO BE DONE IN A STATE HIGHWAY, A PERMIT MUST BE OBTAINED FROM THE STATE OF CALIFORNIA, DIVISION OF HIGHWAYS, 120 SOUTH SPRING STREET.

**CITY OF LA MIRADA CALIFORNIA**

APPROVED, JOHN A. LAMBIE, CITY ENGINEER APPROVED, J.D. PARKHURST, CHIEF ENGINEER  
 CO. SAN. DIST. NO. 12  
 BY: *John A. Lambie* BY: *J.D. Parkhurst*  
 ASSISTANT SANITATION ENGINEER OFFICE ENGINEER  
 CHECKED BY: *W. DeWitt* 9-18-62  
 OFFICE OF CITY ENGINEER, REG. C. E. NO. 3005

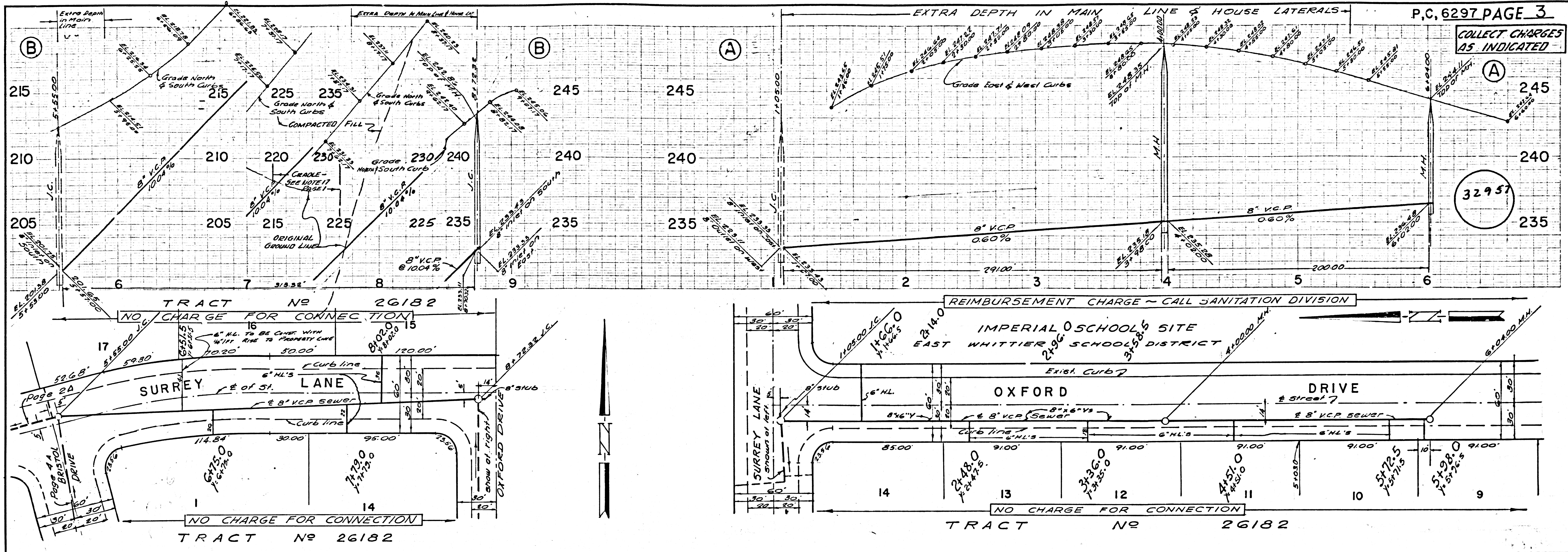
SUBMITTED BY: *John A. Lambie* 9-18-62  
 195 CERRITOS REGIONAL ENGINEER, REG. C. E. NO. 3871



NO CHARGE FOR CONNECTION

32956

COLLECT CHARGES AS INDICATED



NO CHARGE FOR CONNECTION

