

DOUBLE SCALE
SAN DIMAS BLDG. DIST. NO. 10.06

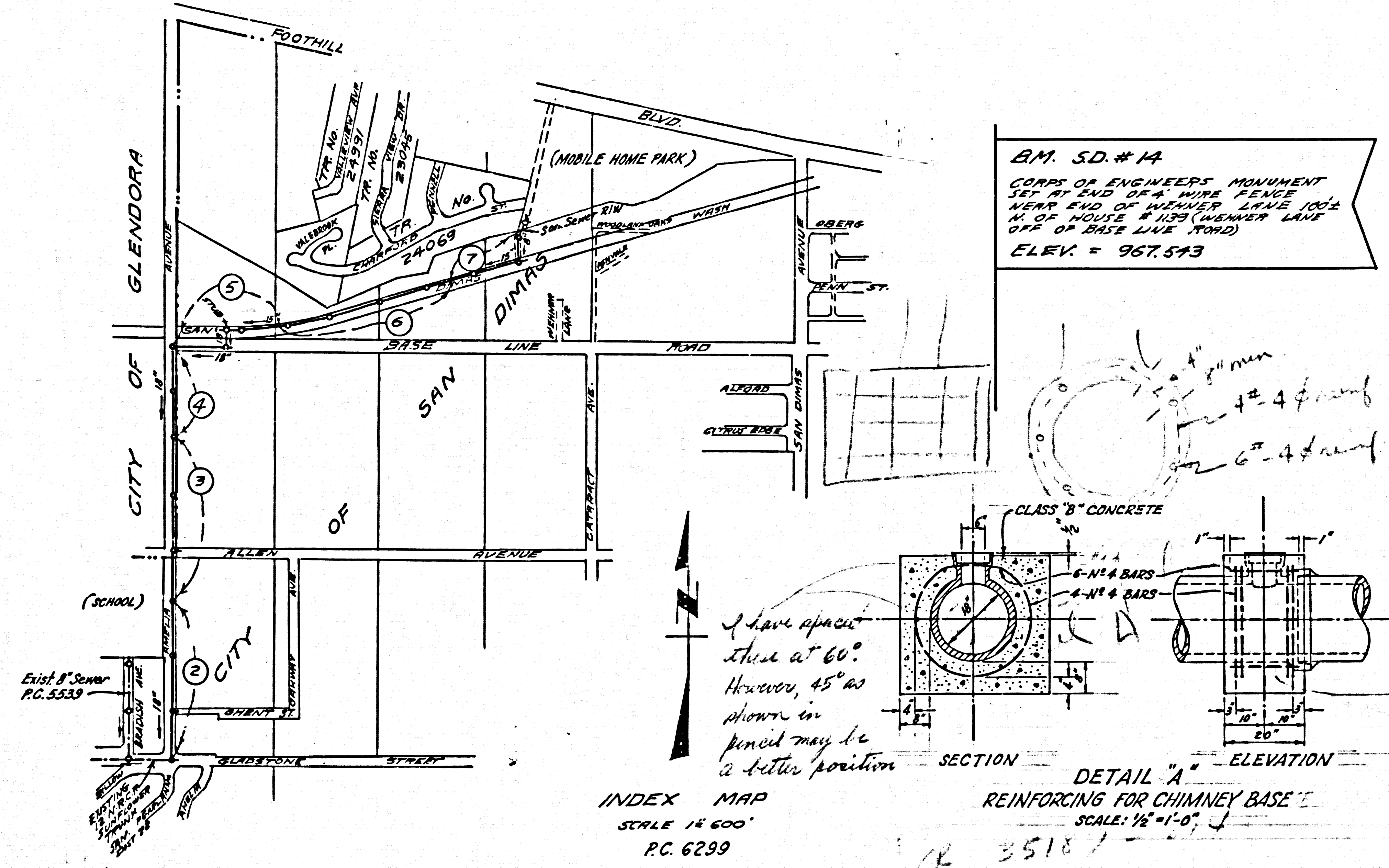
PROFILE ALIGNMENT AND GRADE OF P.C. 6299
SANITARY SEWERS PAGE 1
TO BE CONSTRUCTED FOR
MOBILE HOME PARK

PRIVATE CONTRACT NO. 6299

W.S. 48
4 SHEETS; 7 PAGES
SCALE: HORIZ. 1"=40' VERT. 1"=4'
JANUARY, 1963
PREPARED IN THE OFFICES OF
James O. Bennett
L.S. 2408 (FIELD)
Walter L. Kulback
REG. C. E. NO. 8914

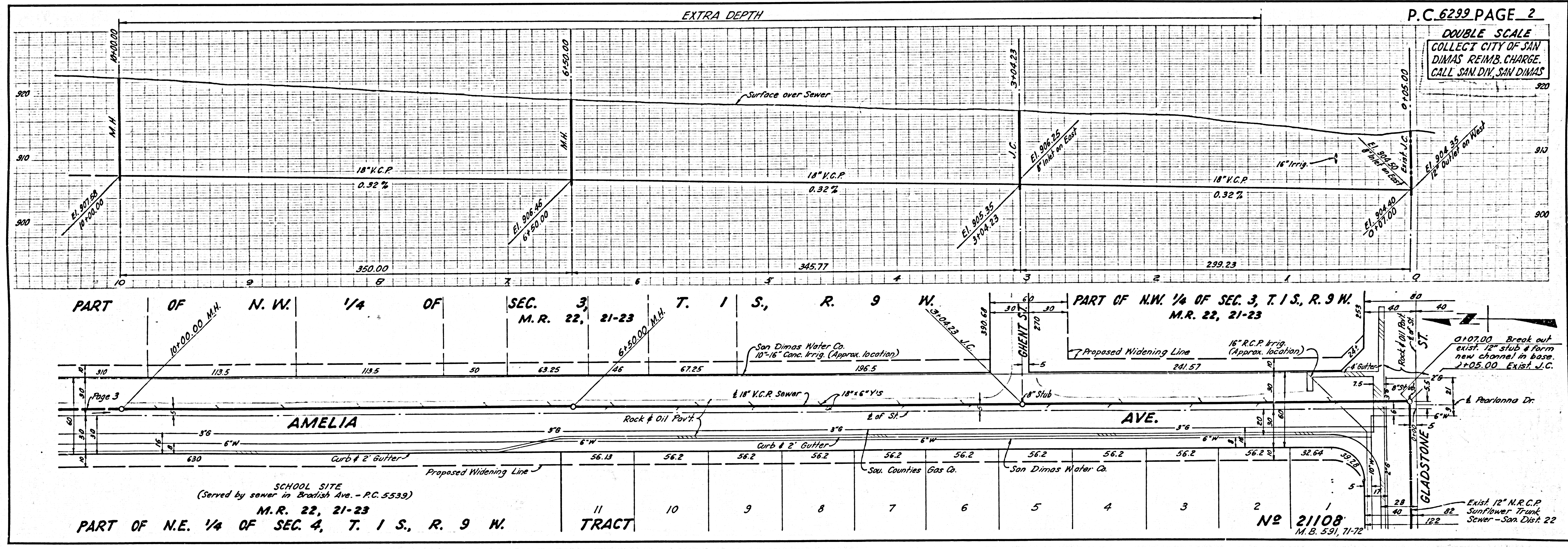
FOR LEGEND SEE PLAN NO. S.A-64
NOTE:
GRADES TO WHICH THIS IMPROVEMENT IS TO BE CONSTRUCTED ARE SHOWN ON PLANS AND PROFILES. GRADE POINTS FOR TOP OF CURBS, CENTER LINE OF STREETS, OR CENTER LINE OF ALLEYS ARE SHOWN BY CIRCLES ON PROFILES. AT ALL POINTS BETWEEN DESIGNATED POINTS THE GRADE SHALL BE ESTABLISHED SO AS TO CONFORM TO A STRAIGHT LINE DRAWN BETWEEN SAID DESIGNATED POINTS.
ELEVATIONS ARE IN FEET ABOVE U.S.C. & G.S. SEA LEVEL DATUM OF 1929.
THIS DRAWING AND THE DATA HEREON ARE HEREBY MADE A PART OF THE SPECIFICATIONS.
WORK SHALL BE CONSTRUCTED ACCORDING TO SPECIFICATIONS ON FILE IN THE OFFICE OF THE CITY ENGINEER AND SHALL BE PROSECUTED ONLY IN THE PRESENCE OF THE CITY ENGINEER.
BEFORE WORK CAN BE STARTED, THE CONTRACTOR MUST OBTAIN A PERMIT TO EXCAVATE IN CITY STREETS FROM THE L.A. COUNTY ROAD DIST. DISTRICT OFFICE NO. _____ AND PAY A FEE TO THE CITY OF SAN DIMAS.
IN EXCHANGE PLACE, SAN DIMAS, SUFFICIENT TO COVER THE COST OF CONSTRUCTION INSPECTION AND RECORD PLANS.
APPROVAL OF THIS PLAN BY THE CITY OF SAN DIMAS DOES NOT CONSTITUTE A REPRESENTATION AS TO THE ACCURACY OF THE LOCATION OF OR THE EXISTENCE OR NON-EXISTENCE OF ANY UNDERGROUND UTILITY PIPE, OR STRUCTURE WITHIN THE LIMITS OF THIS PROJECT. THIS NOTE APPLIES TO ALL PAGES.
IF WORK IS TO BE DONE IN A STATE HIGHWAY, A PERMIT MUST BE OBTAINED FROM THE STATE OF CALIFORNIA, DIVISION OF HIGHWAYS, 126 SOUTH SPRING STREET.

CITY OF SAN DIMAS, CALIFORNIA
APPROVED, JOHN A. LAMBIE, CITY ENGINEER APPROVED, J.D. PARKHURST, CHIEF ENGINEER
CO. SAN. DIST. NO. 22
BY ASSISTANT SANITATION ENGINEER BY OFFICE ENGINEER
CHECKED BY
OFFICE OF CITY ENGINEER, REG. C. E. NO. _____
SUBMITTED BY SAN DIMAS REGIONAL ENGINEER

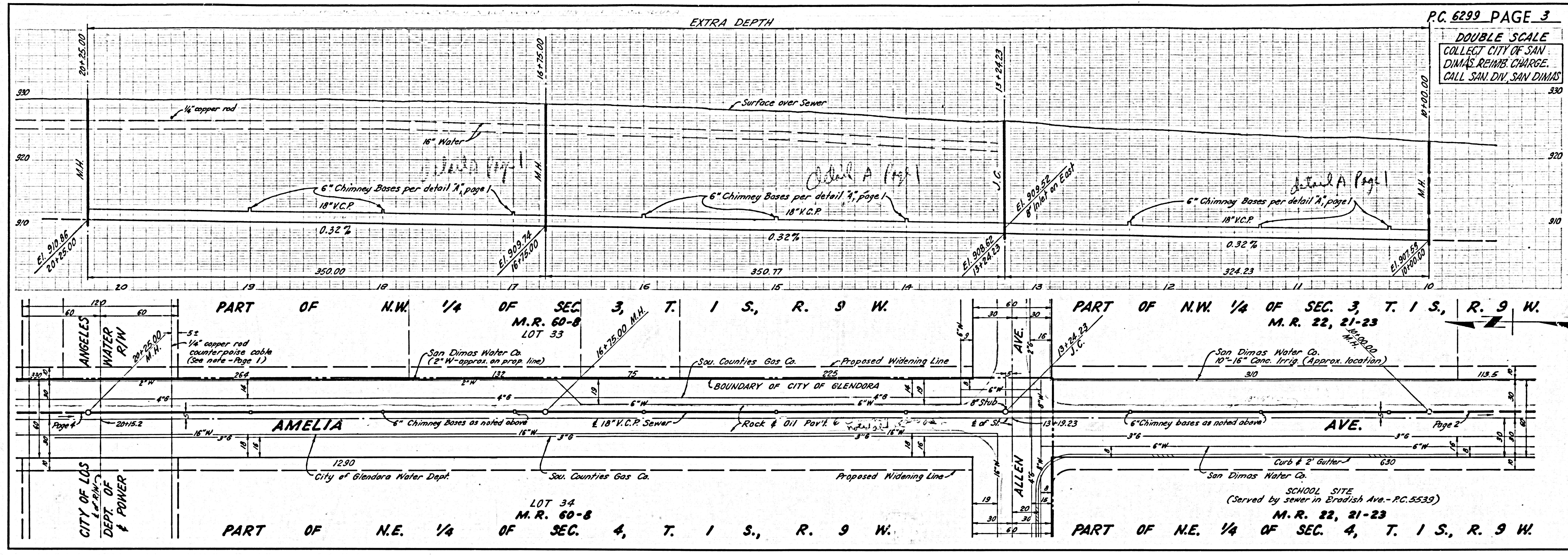


- NOTES:
- PROVIDE STAKES ON THE PROPERTY LINE OR PROPERTY LINES PRODUCED AT RIGHT ANGLES TO THE SEWER LINE AT THE CENTER LINE OF EACH MANHOLE.
 - NO REPRESENTATIVE OF THE CITY ENGINEER WILL SURVEY OR LAY OUT ANY PORTION OF THE WORK.
 - THE OWNER OR HIS AUTHORIZED REPRESENTATIVE SHALL FURNISH THE CITY ENGINEER WITH GRADE SHEETS AND STATIONING FOR ALL HOUSE LATERALS AND Y BRANCHES AND SHALL PROVIDE STAKES FOR THEM AT THEIR PROPER LOCATIONS WITH STATIONING PLAINLY MARKED. ANY CHANGE IN LOCATION SHALL BE REQUESTED IN WRITING BY THE OWNER OR HIS REPRESENTATIVE.
 - THE PRIVATE ENGINEER SHALL FURNISH THE HOUSE LATERAL DEPTH AT THE PROPERTY LINE BELOW THE TOP OF CURB ELEVATION FOR EACH HOUSE LATERAL ON THE GRADE SHEET.
 - NO REVISIONS SHALL BE MADE IN THESE PLANS WITHOUT THE APPROVAL OF THE CITY ENGINEER.
 - USE STANDARD MANHOLE FRAMES AND COVERS, 5-1117.
 - USE EXTRA STRENGTH PIPE. ALL PIPE IS STANDARD DEPTH, EXCEPT AS NOTED.
 - USE MECHANICAL COMPRESSION JOINTS FOR ALL V.C.P. JOINTS PER SPECS., SEC. 354#48.
 - RESURFACE ALL TRENCH WITHIN PAVED AREA TO MEET L.A. COUNTY ROAD DEPT. OR CALIF. STATE HIGHWAY REQUIREMENTS IN ACCORDANCE WITH PERMITS.
 - IF A POWER POLE IS WITHIN THREE FEET OF THE SEWER, THE SEWER SHALL BE ENCASED PER S-0-172, CASE III, TWO FEET ON EITHER SIDE FROM THE POINT OF INTERFERENCE.
 - ALL STRUCTURES SHALL BE BRICK SEWER STRUCTURES, 5'-6" O.D. PRECAST CONCRETE MANHOLES, S-0-125 OR S-0-173, MAY BE USED AS AN ALTERNATE IN LOCATIONS APPROVED BY THE CITY ENGINEER.
 - FOR ALLOWABLE LEAKAGE TEST USE FORMULA NO. 2, SEC. 3, SEC. 54.
 - MANHOLE TOPS IN UNIMPROVED RIGHTS-OF-WAY TO BE SIX INCHES ABOVE FINISHED GRADE.
 - THE CONTRACTOR SHALL NOTIFY THE CONSTRUCTION DIVISION BY TELEPHONE, MADISON 5-4147, EXT. 8561 AT LEAST TWENTY-FOUR HOURS BEFORE STARTING ANY WORK UNDER THIS CONTRACT.
 - IF DURING THE COURSE OF CONSTRUCTION, IT IS DETERMINED THAT THERE IS LESS THAN FOUR FEET OF COVER OVER THE TOP OF A MAIN LINE OR HOUSE LATERAL V.C.P. SEWER WHICH IS NOT INDICATED ON THE PLANS, THE PIPE SHALL BE ENCASED PER S-0-172, CASE III, UNLESS OTHERWISE APPROVED BY THE CITY ENGINEER.
 - ALL STATE AND LOCAL TRENCH AND SAFETY ORDERS WILL BE RIGIDLY ENFORCED.
 - THE CITY OF LOS ANGELES MUST BE NOTIFIED PRIOR TO CONSTRUCTION WITHIN THE LIMITS OF THE WATER & POWER RIGHT OF WAY FOR CUTTING OF COUNTERPOISE CABLES, IF NECESSARY, AND INSPECTION. PLEASE CALL MADISON 4-4211, EXT. 2834, MR. B. G. CHAMBERS OR MR. R. JENSEN.

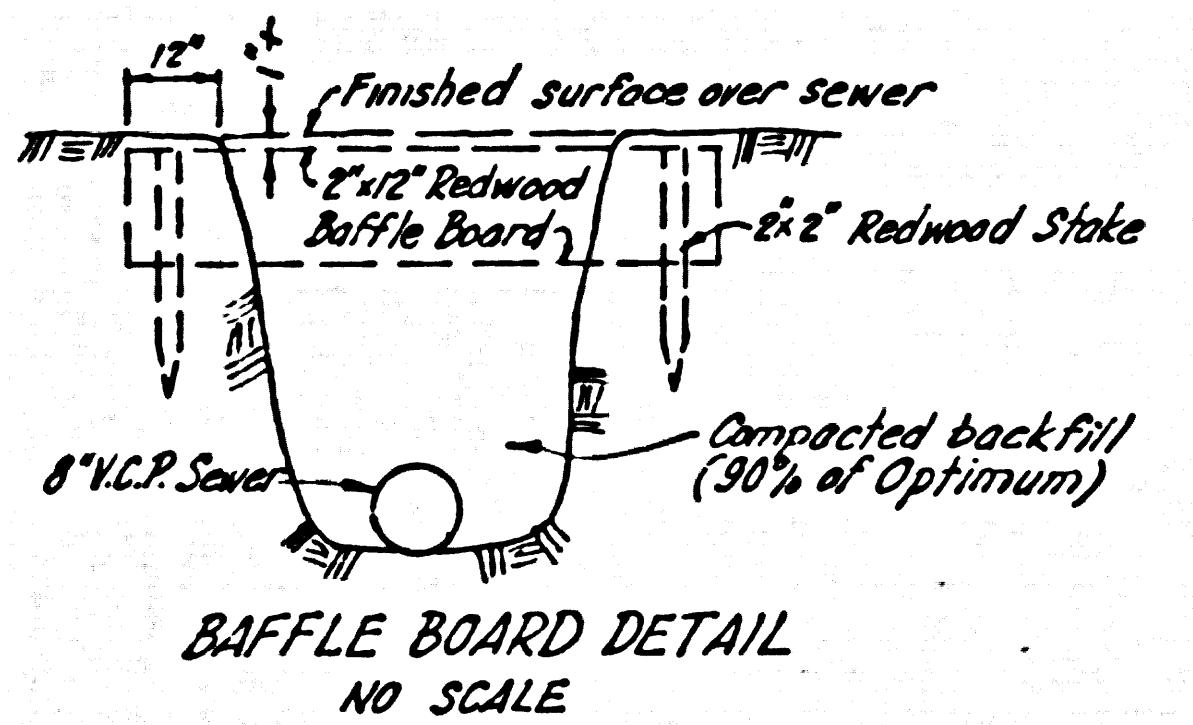
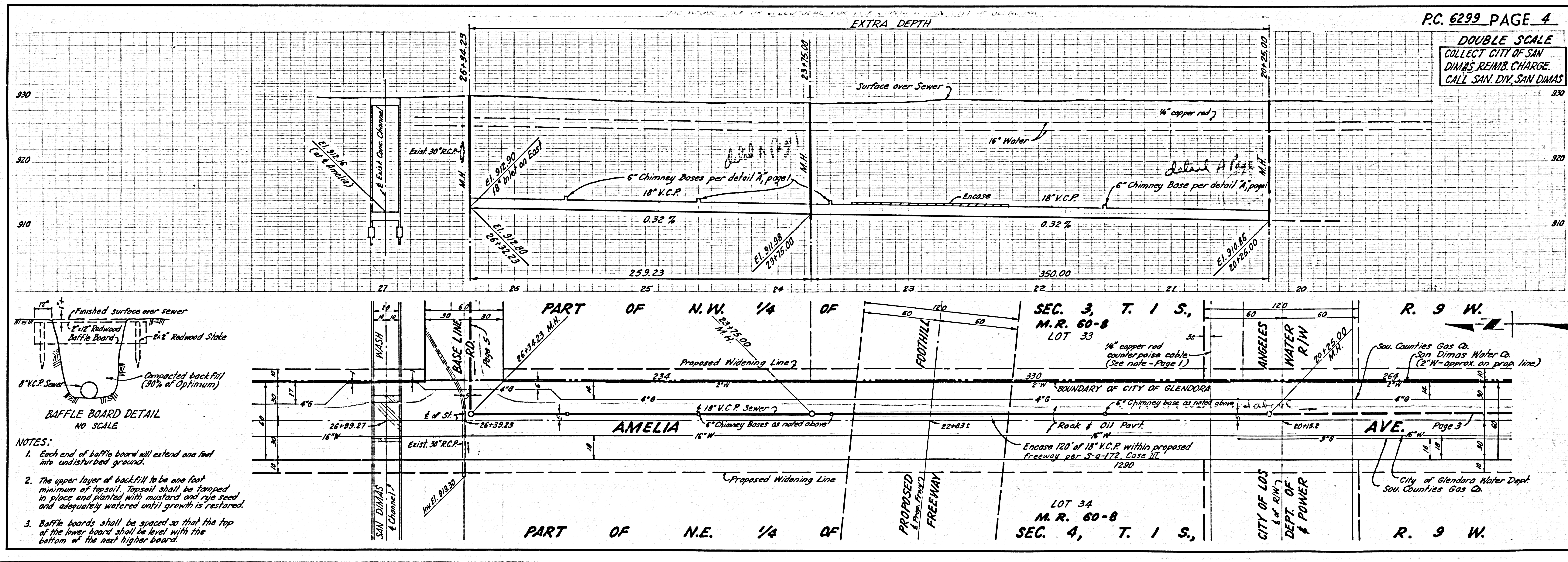
CITY OF GLENDORA
APPROVED _____
CITY ENGINEER



DOUBLE SCALE
COLLECT CITY OF SAN
DIMAS REIMS CHARGE.
CALL SAN. DIV. SAN DIMAS

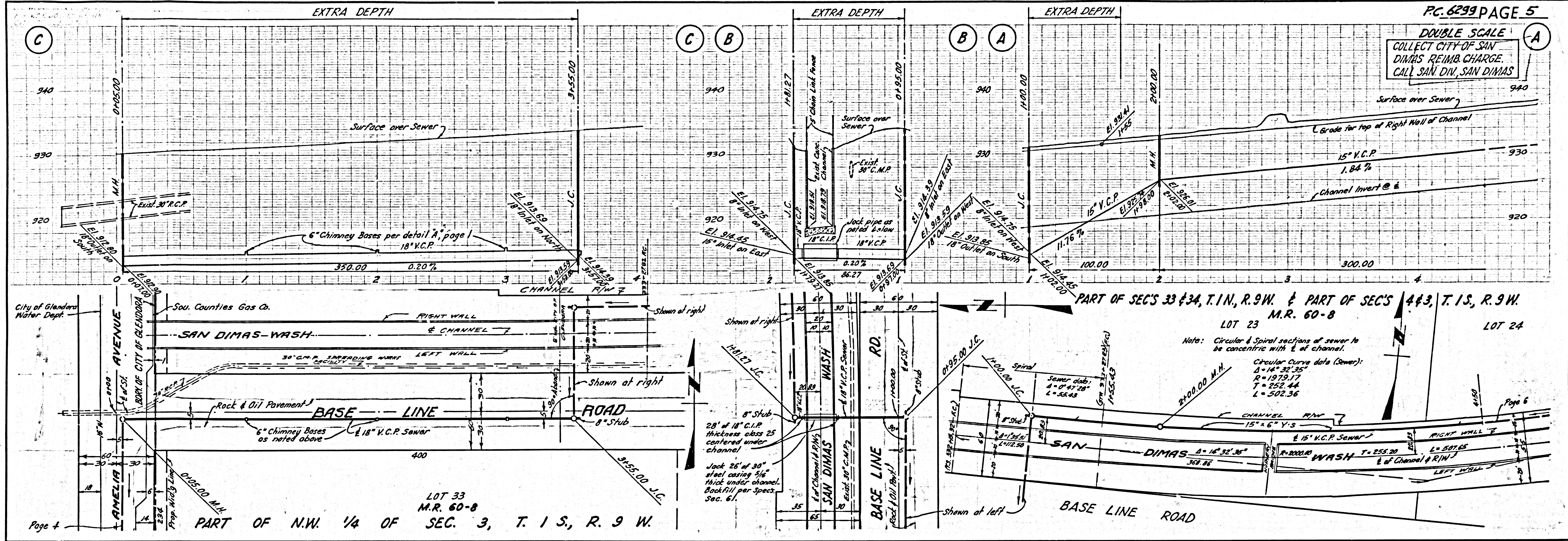


DOUBLE SCALE
COLLECT CITY OF SAN
DIMAS REIMS CHARGE.
CALL SAN. DIV. SAN DIMAS



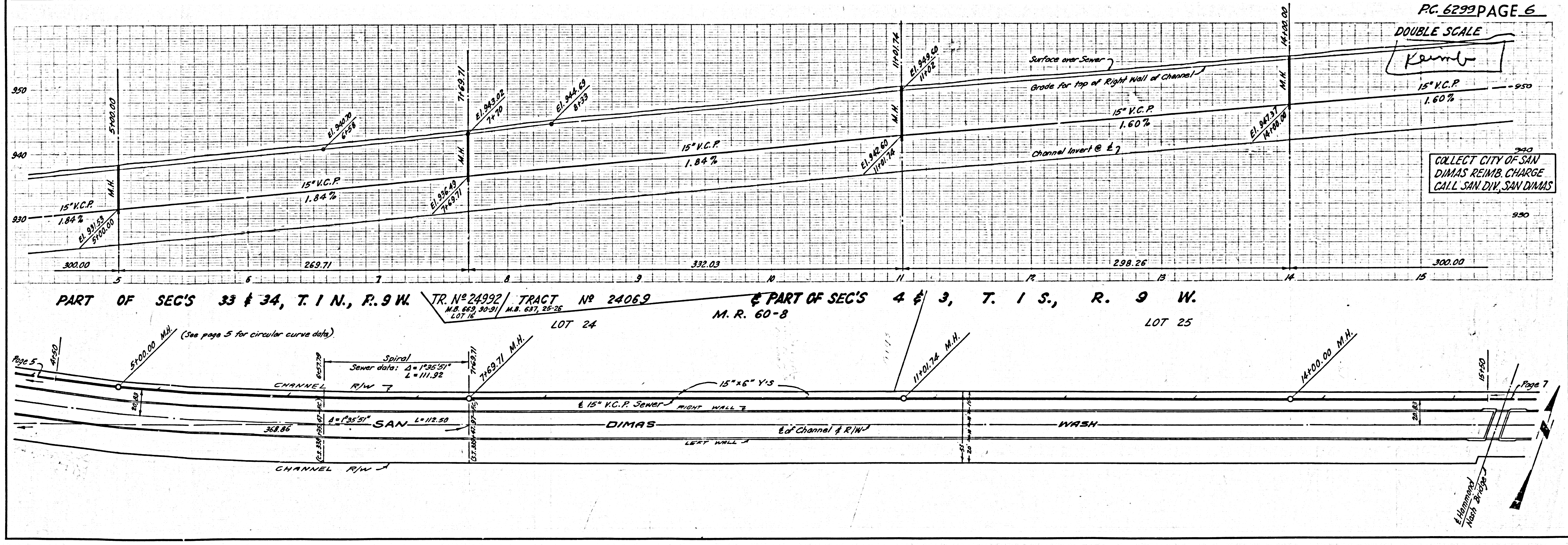
- NOTES:
1. Each end of baffle board will extend one foot into undisturbed ground.
 2. The upper layer of backfill to be one foot minimum of #2001. Topsoil shall be tamped in place and planted with mustard and rye seed and adequately watered until growth is restored.
 3. Baffle boards shall be spaced so that the top of the lower board shall be level with the bottom of the next higher board.

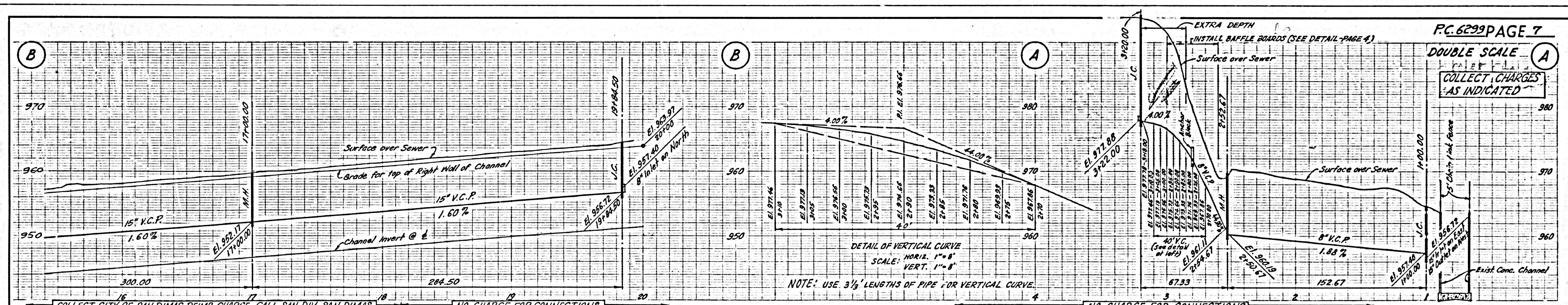
DOUBLE SCALE
COLLECT CITY OF SAN DIMAS REIMB. CHARGE
CALL SAN DIV, SAN DIMAS



DOUBLE SCALE
Kenny

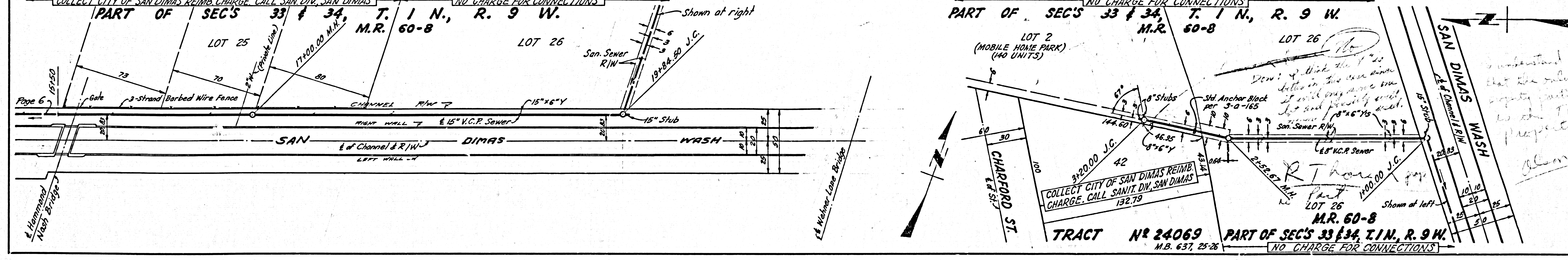
COLLECT CITY OF SAN DIMAS REIMB. CHARGE
CALL SAN DIV, SAN DIMAS





PC. 6299 PAGE 7
 DOUBLE SCALE A
 COLLECT CHARGES AS INDICATED

NOTE: USE 3 1/2' LENGTHS OF PIPE FOR VERTICAL CURVE.



COLLECT CITY OF SAN DIMAS REIMB. CHARGE CALL SAN. DIV. SAN DIMAS
 PART OF SEC'S 33 & 34, T. 1 N., R. 9 W.
 M.R. 60-8
 NO CHARGE FOR CONNECTIONS

NO CHARGE FOR CONNECTIONS
 PART OF SEC'S 33 & 34, T. 1 N., R. 9 W.
 M.R. 60-8

TRACT # 24069
 M.B. 637, 25-26
 PART OF SEC'S 33 & 34, T. 1 N., R. 9 W.
 M.R. 60-8
 NO CHARGE FOR CONNECTIONS

Don't think the 15' stubs in the main sewer line will hold any more soil. It will probably wash out. I'd like to see the 15' stubs replaced with 8\"/>

Page 6

