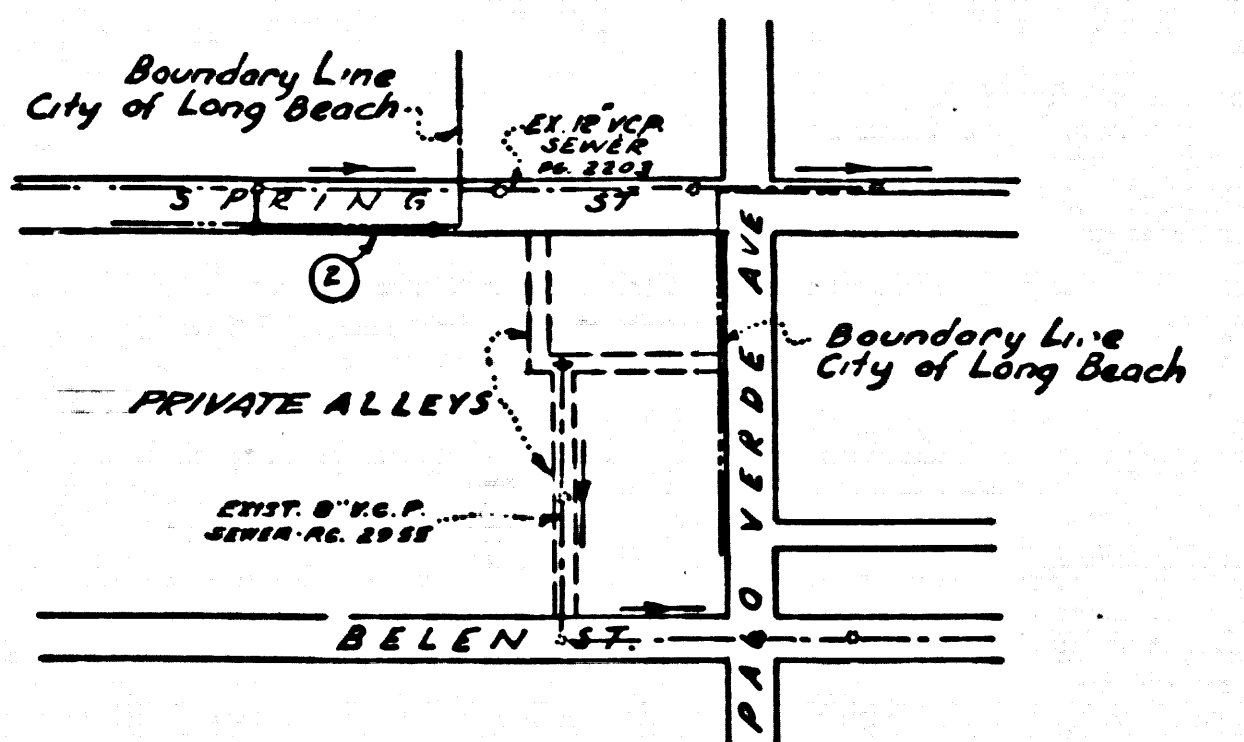


BENCH MARK #8-34 F.B. 1209-P29 EL. = 21.502 1/2 INT. OF SPRING & PALO VERDE IN WELL - CAST IRON COVER MARKED COUNTY SURVEYOR MARKER. COPPER NAIL SET IN CONC 15" BELOW SURFACE (1962 ADJUSTED)



P.C. 6303 INDEX MAP SCALE: 1" = 400'

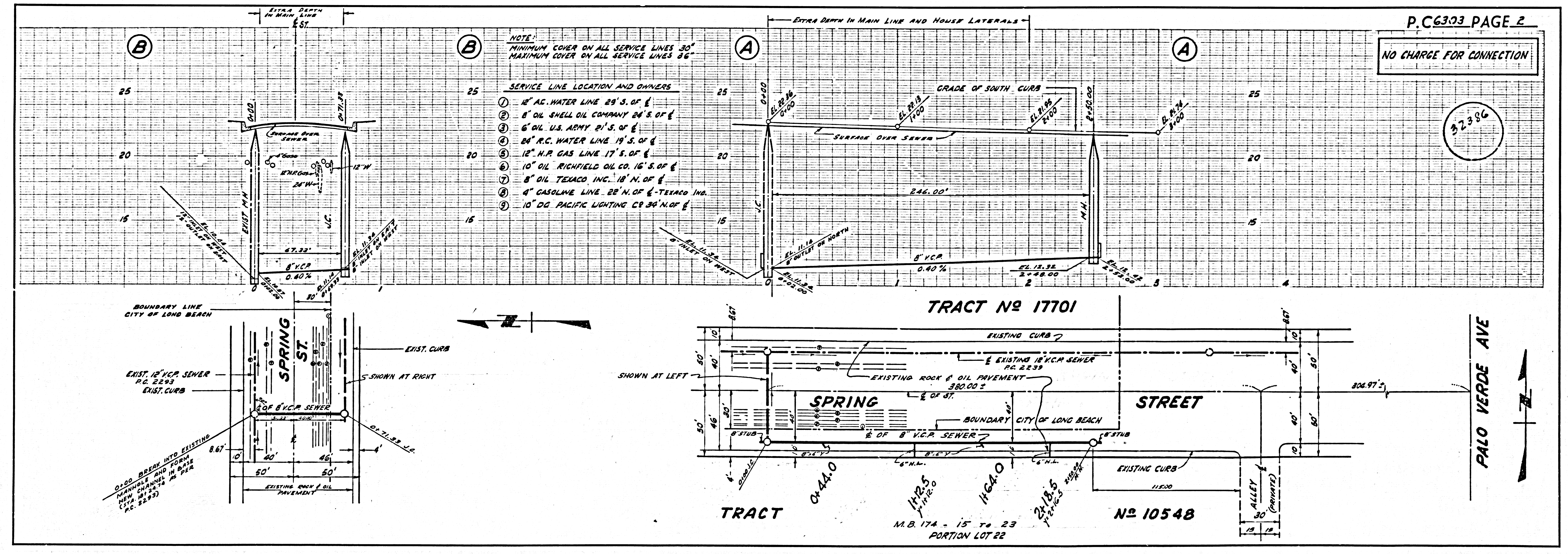
CITY OF LONG BEACH APPROVED: [Signature] CITY ENGINEER

- NOTES: 1. PROVIDE STAKES ON THE PROPERTY LINE OR PROPERTY LINES PRODUCED AT RIGHT ANGLES TO THE SEWER LINE AT THE CENTER LINE OF EACH MANHOLE. 2. NO REPRESENTATIVE OF THE COUNTY ENGINEER WILL SURVEY OR LAY OUT ANY PORTION OF THE WORK. 3. THE OWNER OR HIS AUTHORIZED REPRESENTATIVE SHALL FURNISH THE COUNTY ENGINEER WITH GRADE SHEETS AND STATIONING FOR ALL HOUSE LATERALS AND Y BRANCHES AND SHALL PROVIDE STAKES FOR THEM AT THEIR PROPER LOCATIONS WITH STATIONING PLAINLY MARKED. ANY CHANGE IN LOCATION SHALL BE REQUESTED IN WRITING BY THE OWNER OR HIS REPRESENTATIVE. 4. THE PRIVATE ENGINEER SHALL FURNISH THE HOUSE LATERAL DEPTH AT THE PROPERTY LINE BELOW THE TOP OF CURB ELEVATION FOR EACH HOUSE LATERAL ON THE GRADE SHEET. 5. NO REVISIONS SHALL BE MADE IN THESE PLANS WITHOUT THE APPROVAL OF THE COUNTY ENGINEER. 6. USE STANDARD MANHOLE FRAMES AND COVERS, 5-11T, EXCEPT AS NOTED. 7. USE EXTRA STRENGTH PIPE. ALL PIPE IS 33" BARB DEPTH EXCEPT AS NOTED. 8. USE MECHANICAL COMPRESSION JOINTS FOR ALL V.C.P. PER SPECS. SECS. 34 & 48. 9. RESURFACE ALL TRENCH WITHIN PAVED AREA TO MEET L.A. COUNTY ROAD DEPT. OR CALIF. STATE HIGHWAY REQUIREMENTS IN ACCORDANCE WITH PERMITS. 10. ENCASE FOUR FEET OF SEWER AT POINTS OF INTERFERENCE WITH POLES, CASE III, 5-17Z. 11. HOUSE LATERALS TO BE CONSTRUCTED WITH 1/4" INCH RISE PER FOOT TO PROPERTY LINE. 12. ALL STRUCTURES SHALL BE BRICK SEWER STRUCTURES, 5-104. PRECAST CONCRETE MANHOLES PER S.A. 135 OR S.A. 173 MAY BE USED AS AN ALTERNATE IN LOCATIONS APPROVED BY THE COUNTY ENGINEER. 13. FOR ALLOWABLE LEAKAGE TEST USE FORMULA NO. 1, SPECS. SEC. 54. 14. MANHOLE TOPS IN UNIMPROVED RIGHTS-OF-WAY TO BE SIX INCHES ABOVE FINISHED GRADE. 15. THE CONTRACTOR SHALL NOTIFY THE CONSTRUCTION DIVISION BY TELEPHONE, MADISON 5-4147, EXT. 8151, AT LEAST TWENTY-FOUR HOURS BEFORE STARTING ANY WORK UNDER THIS CONTRACT. 16. THE CONTRACTOR SHALL MAINTAIN FOUR THROUGH LANES OF TRAFFIC AT ALL TIMES. 17. THE CONTRACTOR IS TO NOTIFY THE OWNER OF THE PIPELINES AT LEAST 24 HOURS PRIOR TO EXCAVATION. 18. STANDARD SPECIFICATIONS DATED MAY 25, 1962 APPLY IN THE CONSTRUCTION OF THIS PROJECT. 19-a. Backfill from 1' above top of pipe to bottom of trench shall be imported material with a sand equivalent of 30 or more jetted into place. b. Excavated material may be used for the remainder of the backfill. c. From 1' above top of pipe to 2' below pavement, subgrade material shall be mechanically compacted into place in lifts not to exceed 2' in thickness to a relative density of 85%. d. The final 2' of material shall be mechanically compacted into place to a relative density of 90%.

W.S. 31 1 SHEET; 2 PAGES SCALE: VERT. 1" = 4' HORIZ. 1" = 40' JULY, 1962 PREPARED IN THE OFFICES OF THE IRVINE COMPANY BY: [Signature] REG. C. E. NO. CE 9772 FOR LEGEND SEE PLAN NO. S.A-64

NO CHARGE FOR CONNECTION [Signature] 8-3-62

COUNTY OF LOS ANGELES, CALIFORNIA APPROVED, JOHN A. LAMBIE, COUNTY ENGINEER APPROVED, I.R. PARKHURST, CHIEF ENGINEER BY: [Signatures] ASSISTANT SANITATION ENGINEER OFFICE ENGINEER CHECKED BY: [Signature] OFFICE OF COUNTY ENGINEER, REG. C. E. NO. 12443 SUBMITTED BY: [Signature] 8-3-62 1025 CERRITOS REGIONAL ENGINEER, REG. C. E. NO. 2871



NOTE: MINIMUM COVER ON ALL SERVICE LINES 30" MAXIMUM COVER ON ALL SERVICE LINES 36"

| SERVICE LINE LOCATION AND OWNERS |
|---|
| 1. 12" AC. WATER LINE 29' S. OF 6 |
| 2. 8" OIL SHELL OIL COMPANY 24' S. OF 6 |
| 3. 6" OIL U.S. ARMY 21' S. OF 6 |
| 4. 24" R.C. WATER LINE 19' S. OF 6 |
| 5. 12" N.P. GAS LINE 17' S. OF 6 |
| 6. 10" OIL RICHFIELD OIL CO. 16' S. OF 6 |
| 7. 8" OIL TEXACO INC. 18' N. OF 6 |
| 8. 4" GASOLINE LINE 22' N. OF 6 - TEXACO INC. |
| 9. 10" OG PACIFIC LIGHTING CO. 34' N. OF 6 |

TRACT No 17701 TRACT No 10548 M.B. 174 - 15 TO 23 PORTION LOT 22