

PICO RIVERA BLDG. DIST. NO. 11.01

PROFILE ALIGNMENT AND GRADE OF
SANITARY SEWERS PAGE 1
 TO BE CONSTRUCTED IN

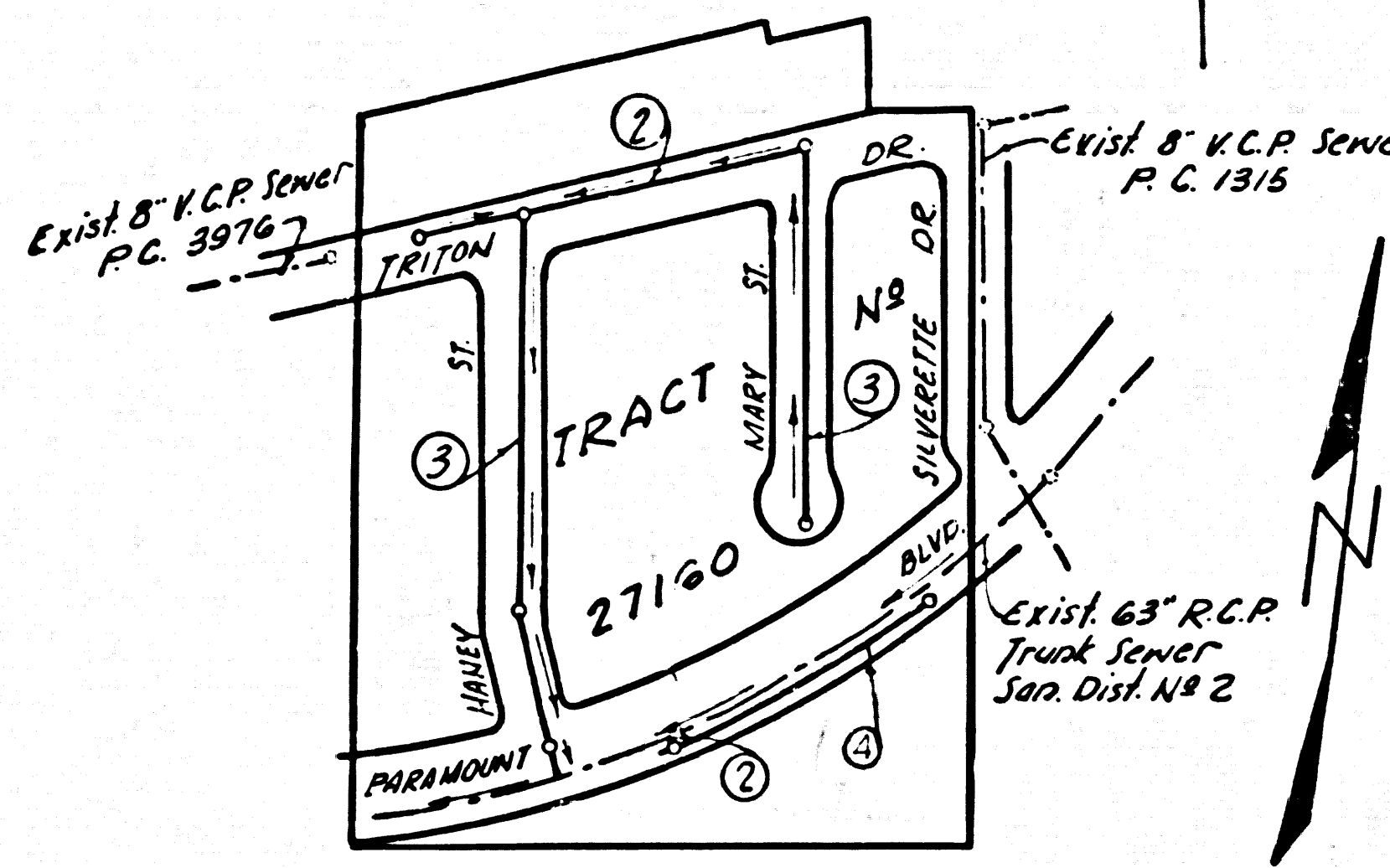
TRACT No 27160
PRIVATE CONTRACT NO. 6305

W.S. 36
 2 SHEETS; 4 PAGES
 SCALE: VERT. 1"=4' JULY, 1962
 HORIZ. 1"=40'
 PREPARED IN THE OFFICES OF
OLSON SURVEYING SERVICE, INC.

32877

Bench Mark:
 Lead and Tack N.E. cor. Unser St.
 and Paramount Blvd. 65' E. of E.
 Paramount Blvd. (per C.S.F.B. 956-165)
 El. 166.53

B.M. S.Y 1670 (RESET) ELEV 161.357
 L&BN IN N. CB. WASHINGTON BLVD E.O.7' W
 OF B.C.R. @ N.W. COR. OF WASHINGTON
 BLVD. & PARAMOUNT BLVD. (1955 RIVERA QUAD)
 (ADD 0.06' TO AGREE WITH B.M. USED)
 FOR THIS PROJECT.



INDEX MAP
P.C. 6305 TRACT No 27160
 Scale: 1" = 200'

REVISION:
 1. Move H.L.s on Lots 15, 19, & 25
 2. Extend Main line sewer from M.H. in
 Paramount Blvd. 250.00 feet North
 APPROVED BY *[Signature]*
 Office of the City Engineer, C.E. No. 12437

- NOTES:
1. PROVIDE STAKES ON THE PROPERTY LINE OR PROPERTY LINES PRODUCED AT RIGHT ANGLES TO THE SEWER LINE AT THE CENTER LINE OF EACH MANHOLE.
 2. NO REPRESENTATIVE OF THE CITY ENGINEER WILL SURVEY OR LAY OUT ANY PORTION OF THE WORK.
 3. THE PRIVATE ENGINEER SHALL FURNISH THE CITY ENGINEER WITH GRADE SHEETS AND STATIONING FOR ALL HOUSE LATERALS AND Y BRANCHES AND SHALL PROVIDE STAKES FOR THEM AT THEIR PROPER LOCATIONS WITH STATIONING PLAINLY MARKED. ALL HOUSE LATERALS SHALL BE CONSTRUCTED IN A STRAIGHT ALIGNMENT AT RIGHT ANGLES FROM THE MAIN LINE SEWER EXCEPT AS SHOWN ON PLANS. ANY CHANGE IN ALIGNMENT SHALL BE REQUESTED BY WRITING BY THE PRIVATE ENGINEER.
 4. THE PRIVATE ENGINEER SHALL FURNISH THE HOUSE LATERAL DEPTH AT THE PROPERTY LINE BELOW THE TOP OF CURB ELEVATION FOR EACH HOUSE LATERAL ON THE GRADE SHEET.
 5. NO REVISIONS SHALL BE MADE IN THESE PLANS WITHOUT THE APPROVAL OF THE CITY ENGINEER.
 6. USE STANDARD MANHOLE FRAMES AND COVERS, S-117.
 7. USE EXTRA STRENGTH PIPE. ALL PIPE IS STANDARD DEPTH, EXCEPT AS NOTED.
 8. USE CEMENT MORTAR OR MECHANICAL COMPRESSION JOINTS FOR ALL V.C.P. JOINTS IN MAIN LINE SEWERS PER SPECIFICATIONS SEC. 30 C. 43.
 9. RESURFACE ALL TRENCH WITHIN PAVED AREA TO MEET L.A. COUNTY ROAD DEPT. OR CALIF. STATE HIGHWAY REQUIREMENTS IN ACCORDANCE WITH PERMITS.
 10. ENCASE FOUR FEET OF SEWER AT POINTS OF INTERFERENCE WITH POLES, CASE III, S-172.
 11. HOUSE LATERALS TO BE CONSTRUCTED WITH INVERTS AT PROPERTY LINE 6 FEET BELOW CURB GRADE. PRECAST CONCRETE MANHOLES PER S-9 135.
 12. ALL STRUCTURES SHALL BE BRICK SEWER STRUCTURES, S-104, EXCEPT AS NOTED, OF S-9 175 MAY BE USED AS AN ALTERNATE BY THE CITY ENGINEER.
 13. FOR ALLOWABLE LEAKAGE TEST USE FORMULA NO. 1, SPECS. SEC. 44 IN LOCATIONS APPROVED BY THE CITY ENGINEER.
 14. MANHOLE TOPS IN UNIMPROVED RIGHTS-OF-WAY TO BE SIX INCHES ABOVE FINISHED GRADE.
 15. THE CONTRACTOR SHALL NOTIFY THE CONSTRUCTION DIVISION BY TELEPHONE, MADISON 9-4747, EXT. 8151 AT LEAST TWENTY-FOUR HOURS BEFORE STARTING ANY WORK UNDER THIS CONTRACT.
 16. STANDARD SPECIFICATIONS DATED MAY 25, 1962 ON FILE IN THE CITY APPLY IN THE CONSTRUCTION OF THIS PROJECT.
 17. USE MECHANICAL COMPRESSION JOINTS FOR ALL V.C.P. HOUSE LATERALS PER SPECIFICATIONS, SEC. 30 C. 43.
 18. WHERE EVER GROUND WATER IS ENCOUNTERED DURING THE CONSTRUCTION OF THE SEWERS, THE V.C.P. JOINTS SHALL BE OF JUMP COMPOUND PER SPECS. SEC. 31 AND 48, OR MECHANICAL COMPRESSION JOINTS PER SPECS. SEC. 31.
 19. ALL STATE & LOCAL TRENCH SAFETY ORDERS WILL BE RIGIDLY ENFORCED.

NO CONNECTIONS FOR THE DISPOSAL OF INDUSTRIAL WASTES SHALL BE MADE TO SEWERS SHOWN ON THESE DRAWINGS WITHOUT WRITTEN PERMISSION FROM THE CHIEF ENGINEER AND GENERAL MANAGER OF THE COUNTY SANITATION DISTRICTS.

BEFORE BREAKING INTO ANY EXISTING STRUCTURE AND BEFORE FINAL ACCEPTANCE OF THIS WORK, COUNTY SANITATION DISTRICT (DU 4-1281) SHALL BE NOTIFIED IN ORDER THAT REQUIRED INSPECTION CAN BE MADE.

NO CHARGE FOR CONNECTIONS
[Signature] 10-8-62

FOR LEGEND SEE PLAN NO. S-A-44

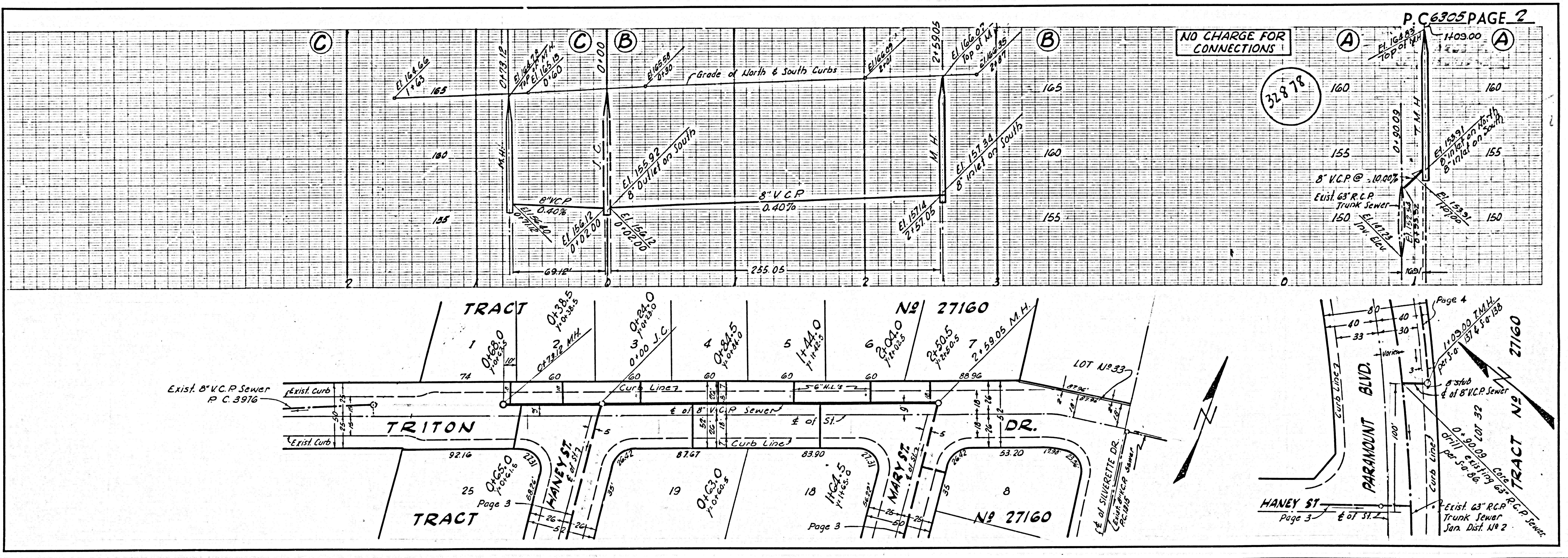
NOTE:
 GRADES TO WHICH THIS IMPROVEMENT IS TO BE CONSTRUCTED ARE SHOWN ON PLANS AND PROFILES. GRADE POINTS FOR TOP OF CURBS, CENTER LINE OF STREETS, OR CENTER LINE OF ALLEYS ARE SHOWN BY CIRCLES ON PROFILES. AT ALL POINTS BETWEEN DESIGNATED POINTS THE GRADE SHALL BE ESTABLISHED SO AS TO CONFORM TO A STRAIGHT LINE DRAWN BETWEEN SAID DESIGNATED POINTS.
 ELEVATIONS ARE IN FEET ABOVE U.S.C. & G.S. SEA LEVEL DATUM OF 1929.
 THIS DRAWING AND THE DATA HEREON ARE HEREBY MADE A PART OF THE SPECIFICATIONS.
 WORK SHALL BE CONSTRUCTED ACCORDING TO SPECIFICATIONS ON FILE IN THE OFFICE OF THE CITY ENGINEER AND SHALL BE PROSECUTED ONLY IN THE PRESENCE OF THE CITY ENGINEER.
 BEFORE WORK CAN BE STARTED, THE CONTRACTOR MUST OBTAIN A PERMIT TO EXCAVATE IN CITY STREETS FROM THE L.A. COUNTY ROAD DEPT., DISTRICT OFFICE NO. 4, AND MAKE A DEPOSIT WITH THE CITY OF PICO RIVERA 2625 PASCADILLA BOULEVARD SUFFICIENT TO COVER THE COST OF CONSTRUCTION INSPECTION AND RECORD PLANS.
 APPROVAL OF THIS PLAN BY THE CITY OF PICO RIVERA DOES NOT CONSTITUTE A REPRESENTATION AS TO THE ACCURACY OF THE LOCATION OF OR THE EXISTENCE OR NON-EXISTENCE OF ANY UNDERGROUND UTILITY PIPE, OR STRUCTURE WITHIN THE LIMITS OF THIS PROJECT. THIS NOTE APPLIES TO ALL PAGES.
 IF WORK IS TO BE DONE IN A STATE HIGHWAY, A PERMIT MUST BE OBTAINED FROM THE STATE OF CALIFORNIA, DIVISION OF HIGHWAYS, 128 SOUTH SPRING STREET.

CITY OF PICO RIVERA, CALIFORNIA

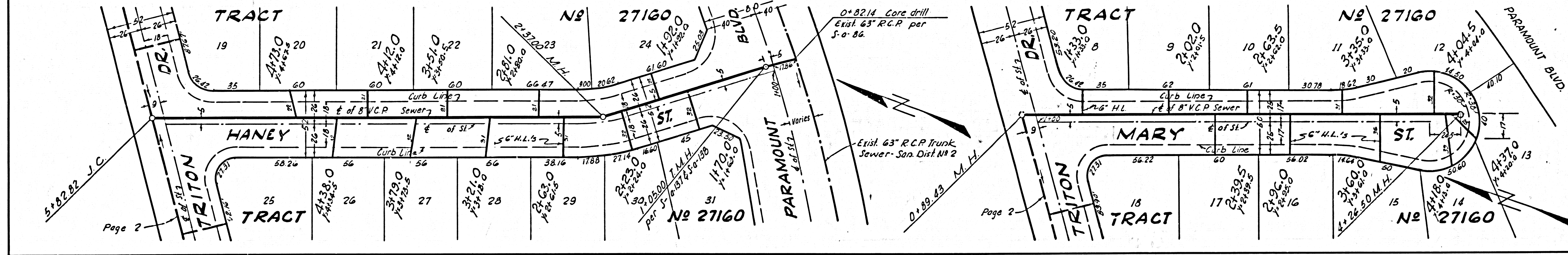
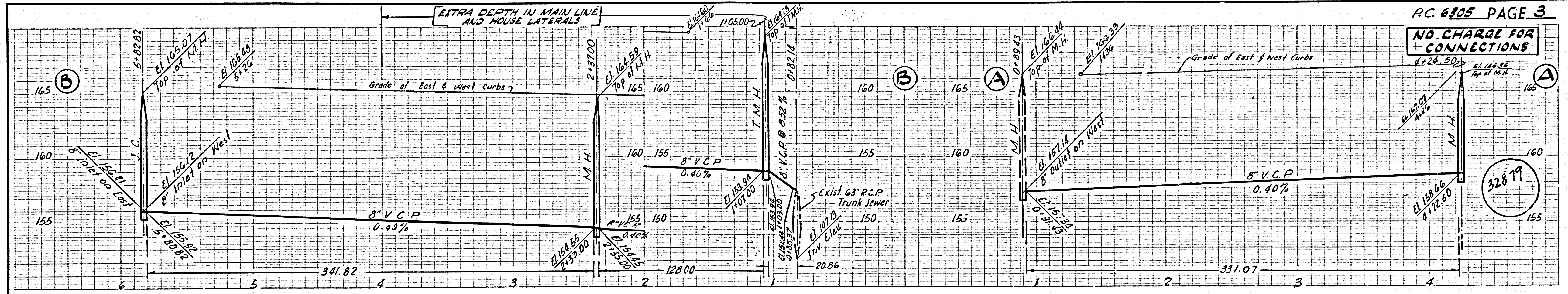
APPROVED, JOHN A. LAMBIE, CITY ENGINEER APPROVED, J.D. PARKHOUSE, CHIEF ENGINEER
 CO. SAN. DIST. NO. 2

BY *[Signature]* 4337 SANITATION ENGINEER BY *[Signature]* OFFICE ENGINEER
 CHECKED BY *[Signature]* 10-10-62
 OFFICE OF CITY ENGINEER, REG. C. E. NO. 3496

SUBMITTED BY *[Signature]* 10-8-62
 LOS CERRITOS REGIONAL ENGINEER REG. C.E. 3871



NO CHARGE FOR CONNECTIONS



NO CHARGE FOR CONNECTIONS

