

PRIVATE ENGINEER'S NOTICE TO CONTRACTOR

The existence and location of any underground utility pipes or structures shown on these plans were obtained by a search of the available records. To the best of our knowledge there are no existing utilities except as shown on these plans.
The Contractor is required to take due precautionary measures to protect the utility lines shown and any lines not of record or not shown on these plans.

E. Epperson
Registered Engineer No. 5828

LA PUENTE BLDG. DIST. NO. 2.03

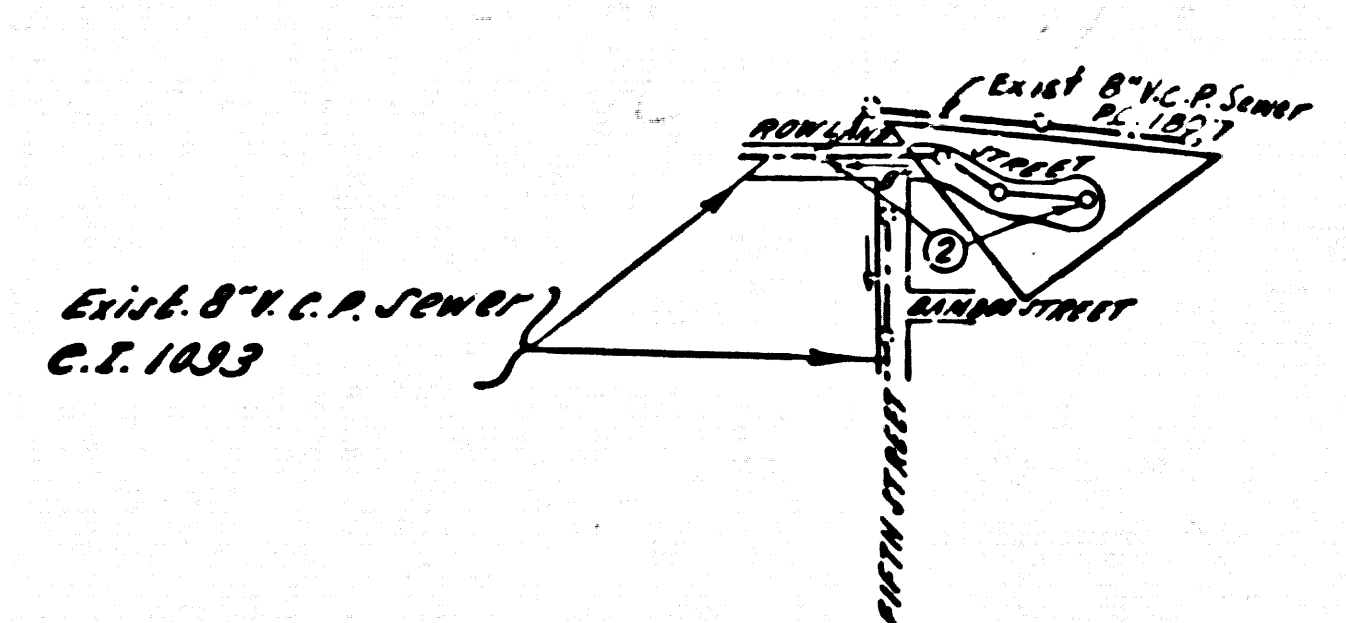
PROFILE ALIGNMENT AND GRADE OF P.C. 6306
SANITARY SEWERS PAGE 1
TO BE CONSTRUCTED IN

TRACT No. 27206
PRIVATE CONTRACT NO. 6306

W.S. 38
1 SHEET OF 2 PAGES
SCALE: VERT. 1"=4' HORIZ. 1"=40'
AUGUST, 1962
PREPARED IN THE OFFICES OF

NATIONAL ENGINEERING CO.
By: *E. Epperson*
REG. C. E. NO. 5828
FOR LEGEND SEE PLAN NO. S-A-64

- NOTES:
- PROVIDE STAKES ON THE PROPERTY LINE OR PROPERTY LINES PRODUCED AT RIGHT ANGLES TO THE SEWER LINE AT THE CENTER LINE OF EACH MANHOLE.
 - NO REPRESENTATIVE OF THE CITY ENGINEER WILL SURVEY OR LAY OUT ANY PORTION OF THE WORK.
 - THE OWNER OR HIS AUTHORIZED REPRESENTATIVE SHALL FURNISH THE CITY ENGINEER WITH GRADE SHEETS AND STATIONING FOR ALL HOUSE LATERALS AND Y BRANCHES AND SHALL PROVIDE STAKES FOR THEM AT THEIR PROPER LOCATIONS WITH STATIONING PLAINLY MARKED. ANY CHANGE IN LOCATION SHALL BE REQUESTED IN WRITING BY THE OWNER OR HIS REPRESENTATIVE.
 - THE PRIVATE ENGINEER SHALL FURNISH THE HOUSE LATERAL DEPTH AT THE PROPERTY LINE BELOW THE TOP OF CURB ELEVATION FOR EACH HOUSE LATERAL ON THE GRADE SHEET.
 - NO REVISIONS SHALL BE MADE IN THESE PLANS WITHOUT THE APPROVAL OF THE CITY ENGINEER.
 - USE STANDARD MANHOLE FRAMES AND COVERS, 5-117.
 - USE EXTRA STRENGTH PIPE ALL PIPE STANDARD DEPTH.
 - USE MECHANICAL COMPRESSION JOINTS FOR ALL H.C.P. PER SPECS. SECS. 36.40, AND 49.
 - RESURFACE ALL TRENCH 1" THIN RAYED AREA TO MEET L.A. COUNTY ROAD DEPT. OR CALIF. STATE HIGHWAY REQUIREMENTS IN ACCORDANCE WITH PERMITS.
 - ENCASE FOUR FEET OF SEWER AT POINTS OF INTERFERENCE WITH POLES, CASE III, 5-172.
 - HOUSE LATERALS TO BE CONSTRUCTED WITH INVERTS AT PROPERTY LINE 6" FEET BELOW CURB GRADE.
 - ALL STRUCTURES SHALL BE BRICK SEWER STRUCTURES, 5-104 PRECAST CONCRETE MANHOLES PER L.A. 135 OR S.C. 113 UNLESS OTHERWISE SPECIFIED.
 - FOR ALLOWABLE LEAKAGE TEST USE FORMULA NO. 1700 SPECS. SEC. 54.
 - MANHOLE TOPS IN UNIMPROVED RIGHTS-OF-WAY TO BE SIX INCHES ABOVE FINISHED GRADE.
 - THE CONTRACTOR SHALL NOTIFY THE CONSTRUCTION DIVISION BY TELEPHONE, MADISON 5-4747, AT LEAST TWENTY-FOUR HOURS BEFORE STARTING ANY WORK UNDER THIS CONTRACT.
 - STANDARD SPECIFICATION 3452MATS.102, APPLY IN CONSTRUCTION OF THIS PROJECT.



INDEX MAP
SCALE 1/2"=100'
TRACT No. 27206
P.C. 6306

BENCH MARK: 56 1035
Lgt in N. of Glendora Ave. 22' N of ch. rd.
@ N.W. cor. Glendora Ave. & Rowland St.
PROP. N.
E.L. = 333.039

REVISION.
REVISED CURB GRADE FROM STATION 1+63 TO 5+50 SEWER & GRADE REVISED FROM STATION 3+36 TO 5+42.72
OCTOBER 25 1962
Approved: *B. F. Haring* 11-7-62

CITY OF LA PUENTE
APPROVED: *Lester B. Kuehl*
DEPUTY CITY CLERK

NO CHARGE FOR CONNECTIONS
Donald R. Decker

NO CONNECTIONS FOR THE DISPOSAL OF INDUSTRIAL WASTES SHALL BE MADE TO SEWERS SHOWN ON THESE DRAWINGS WITHOUT WRITTEN PERMISSION FROM THE CHIEF ENGINEER AND GENERAL MANAGER OF THE COUNTY SANITATION DISTRICTS.

NOTES:
GRADES TO WHICH THIS IMPROVEMENT IS TO BE CONSTRUCTED ARE SHOWN ON PLANS AND PROFILES. GRADE POINTS FOR TOP OF CURBS, CENTER LINE OF STREETS, OR CENTER LINE OF ALLEYS ARE SHOWN BY CIRCLES ON PROFILES AT ALL POINTS BETWEEN DESIGNATED POINTS THE GRADE SHALL BE ESTABLISHED SO AS TO CONFORM TO A STRAIGHT LINE DRAWN BETWEEN SAID DESIGNATED POINTS.
ELEVATIONS ARE IN FEET ABOVE U.S.C. & G.S. SEA LEVEL DATUM OF 1929.
THIS DRAWING AND THE DATA HEREON ARE HEREBY MADE A PART OF THE SPECIFICATIONS.
WORK SHALL BE CONSTRUCTED ACCORDING TO SPECIFICATIONS ON FILE IN THE OFFICE OF THE CITY ENGINEER AND SHALL BE PROSECUTED ONLY IN THE PRESENCE OF THE CITY ENGINEER.
BEFORE WORK CAN BE STARTED, THE CONTRACTOR MUST OBTAIN A PERMIT TO EXCAVATE IN CITY STREETS FROM THE L.A. COUNTY ROAD DEPT., DISTRICT OFFICE NO. 1, AND PAY A FEE TO THE CITY OF LA PUENTE, 1501/2 MAIN STREET, LA PUENTE, SUFFICIENT TO COVER THE COST OF CONSTRUCTION INSPECTION AND RECORD PLANS.
APPROVAL OF THIS PLAN BY THE CITY OF LA PUENTE DOES NOT CONSTITUTE A REPRESENTATION AS TO THE ACCURACY OF THE LOCATION OR THE EXISTENCE OR NON-EXISTENCE OF ANY UNDERGROUND UTILITY PIPE, OR STRUCTURE WITHIN THE LIMITS OF THIS PROJECT. THIS NOTE APPLIES TO ALL PAGES.
IF WORK IS TO BE DONE IN A STATE HIGHWAY, A PERMIT MUST BE OBTAINED FROM THE STATE OF CALIFORNIA, DIVISION OF HIGHWAYS, 120 SOUTH SPRING STREET.

CITY OF LA PUENTE, CALIFORNIA
APPROVED, JOHN A. LAMBIE, CITY ENGINEER
APPROVED, J. R. KAPRICK, CHIEF ENGINEER
BY: *W. C. Decker* SANITATION ENGINEER
BY: *L. C. Decker* OFFICE ENGINEER
CHECKED BY: *W. C. Decker*
OFFICE OF CITY ENGINEER, REG. C. E. NO. 5466
SUBMITTED *W. C. Decker* 8-27-62
SAN JUAN REGIONAL ENGINEER

