

INDEX MAP
TRACT NO. 25814
P.C. 6307
SCALE: 1" = 300'

NOTE:
The Entrance And Approximate Location Of Underground Utilities Or Structures Shown On These Plans Were Determined By A Search Of The Available Public Records. To The Best Of Our Knowledge There Are No Existing Underground Utilities Or Structures Except As Shown On These Maps. The Contractor Is Required To Take Due Diligent Measures To Protect The Utilities Or Structures At The Site. It Shall Be The Contractor's Responsibility To Notify The Owners Of The Utilities Or Structures Concerned Before Starting Work.

BENCH MARK:
S.O. 1593
CO. SURVEYOR BRASS NAIL IN WELL
10' DN @ OR NEAR E. IN OF 123 ST.
& LOS ROOLES AVE.
ELEV. 443.194
WHITTIER QUAD 1535

PUENTE BLDG. DIST. NO. 2

- NOTES:**
1. PROVIDE STAKES ON THE PROPERTY LINE OR PROPERTY LINES PRODUCED AT RIGHT ANGLES TO THE SEWER LINE AT THE CENTER LINE OF EACH MANHOLE.
 2. NO REPRESENTATIVE OF THE COUNTY ENGINEER WILL SURVEY OR LAY OUT ANY PORTION OF THE WORK.
 3. THE OWNER OR HIS AUTHORIZED REPRESENTATIVE SHALL FURNISH THE COUNTY ENGINEER WITH GRADE SHEETS AND STATIONING FOR ALL HOUSE LATERALS AND Y BRANCHES AND SHALL PROVIDE STAKES FOR THEM AT THEIR PROPER LOCATIONS WITH STATIONING PLAINLY MARKED. ANY CHANGE IN LOCATION SHALL BE REQUESTED IN WRITING BY THE OWNER OR HIS REPRESENTATIVE.
 4. THE PRIVATE ENGINEER SHALL FURNISH THE HOUSE LATERAL DEPTH AT THE PROPERTY LINE BELOW THE TOP OF CURB ELEVATION FOR EACH HOUSE LATERAL ON THE GRADE SHEET.
 5. NO REVISIONS SHALL BE MADE IN THESE PLANS WITHOUT THE APPROVAL OF THE COUNTY ENGINEER.
 6. USE STANDARD MANHOLE FRAMES AND COVERS, S-117, EXCEPT AS NOTED.
 7. USE EXTRA STRENGTH PIPE ALL PIPE IS STANDARD DOWTY EXCEPT AS NOTED.
 8. USE CEMENT MORTAR OR MECHANICAL COMPRESSION JOINTS FOR ALL V.C.P. JOINTS IN MAIN LINE SEWERS, PER SPECS. SEC. 30.6.4.5 EXCEPT AS NOTED.
 9. RESURFACE ALL TRENCH WITHIN PAVED AREA TO MEET L.A. COUNTY ROAD DEPT. OR CALIF. STATE HIGHWAY REQUIREMENTS IN ACCORDANCE WITH PERMITS.
 10. ENCASE FOUR FEET OF SEWER AT POINTS OF INTERFERENCE WITH POLES, CASE III, S-172.
 11. HOUSE LATERALS TO BE CONSTRUCTED WITH INVERTS AT PROPERTY LINE @ 2 FEET BELOW CURB GRADE F.C.U.T.
 12. ALL STRUCTURES SHALL BE BRICK SEWER STRUCTURES 3'-0" DIA. PER CALIF. CONC. MANUALS FOR S-4-135.
 13. OR 5'-0" DIA. MAY BE USED AS AN ALTERNATE IN LOCATIONS APPROVED BY THE COUNTY ENGINEER.
 14. FOR ALLOWABLE LEAKAGE TEST USE FORMULA NO. 1, SPECS. SEC. 34.
 15. MANHOLE TOPS IN UNIMPROVED RIGHTS-OF-WAY TO BE SIX INCHES ABOVE FINISHED GRADE.
 16. THE CONTRACTOR SHALL NOTIFY THE CONSTRUCTION & OPERATIONS DIVISION BY TELEPHONE, MADISON 5-4171, 8:45 A.M. AT LEAST TWENTY-FOUR HOURS BEFORE STARTING ANY WORK UNDER THIS CONTRACT.
 17. STANDARD SPECIFICATIONS DATED MAY 25th 1962 APPLY IN THE CONSTRUCTION OF THIS PROJECT.
 18. USE MECHANICAL COMPRESSION JOINTS FOR ALL V.C.P. HOUSE LATERALS PER SPECS. SEC. 30.6.4.5.

NO CHARGE FOR CONNECTIONS

Howard S. Anderson 9-7-62

NO CONNECTIONS FOR THE DISPOSAL OF INDUSTRIAL WASTES SHALL BE MADE TO SEWERS SHOWN ON THESE DRAWINGS WITHOUT WRITTEN PERMISSION FROM THE CHIEF ENGINEER AND GENERAL MANAGER OF THE COUNTY SANITATION DISTRICTS.

PROFILE ALIGNMENT AND GRADE OF **P.C. 6307**
SANITARY SEWERS PAGE 1
TO BE CONSTRUCTED IN **J.N. 0358.71**
TRACT No 25814

PRIVATE CONTRACT NO. 6307

W.S. 37
4 SHEETS; 7 PAGES
SCALE: VERT. 1" = 4'
HORIZ. 1" = 40'
AUGUST, 1962

PREPARED IN THE OFFICES OF
KEMMERER ENGR. CO. INC.

By: *Robert R. Flores*
REG. C. E. NO. 11349

FOR LEGEND SEE PLAN NO. S-A-64

NOTE:
GRADES TO WHICH THIS IMPROVEMENT IS TO BE CONSTRUCTED ARE SHOWN ON PLANS AND PROFILES. GRADE POINTS FOR TOP OF CURB, CENTER LINE OF STREETS, OR CENTER LINE OF ALLEYS ARE SHOWN BY CIRCLES ON PROFILES. AT ALL POINTS BETWEEN DESIGNATED POINTS THE GRADE SHALL BE ESTABLISHED SO AS TO CONFORM TO A STRAIGHT LINE DRAWN BETWEEN SAID DESIGNATED POINTS.
ELEVATIONS ARE IN FEET ABOVE U.S.C. & G.S. SEA LEVEL DATUM OF 1929.
THIS DRAWING AND THE DATA HEREON ARE HEREBY MADE A PART OF THE SPECIFICATIONS.
WORK SHALL BE CONSTRUCTED ACCORDING TO SPECIFICATIONS ON FILE IN THE OFFICE OF THE COUNTY ENGINEER AND SHALL BE PROSECUTED ONLY IN THE PRESENCE OF THE COUNTY ENGINEER.
BEFORE WORK CAN BE STARTED, THE CONTRACTOR MUST OBTAIN A PERMIT TO EXCAVATE IN COUNTY STREETS FROM THE L.A. COUNTY ROAD DEPT., DISTRICT OFFICE NO. 1, AND PAY A FEE TO THE COUNTY ENGINEER ROOM 310 L.A. COUNTY ENGR. BLDG., 108 N.E. ST. SUFFICIENT TO COVER THE COST OF CONSTRUCTION INSPECTION AND RECORD PLANS.
APPROVAL OF THIS PLAN BY THE COUNTY OF LOS ANGELES DOES NOT CONSTITUTE A REPRESENTATION AS TO THE ACCURACY OF THE LOCATION OR OR THE EXISTENCE OR NON-EXISTENCE OF ANY UNDERGROUND UTILITY PIPE, OR STRUCTURE WITHIN THE LIMITS OF THIS PROJECT. THIS NOTE APPLIES TO ALL PAGES.
IF WORK IS TO BE DONE IN A STATE HIGHWAY, A PERMIT MUST BE OBTAINED FROM THE STATE OF CALIFORNIA, DIVISION OF HIGHWAYS, 120 SOUTH SPRING STREET.

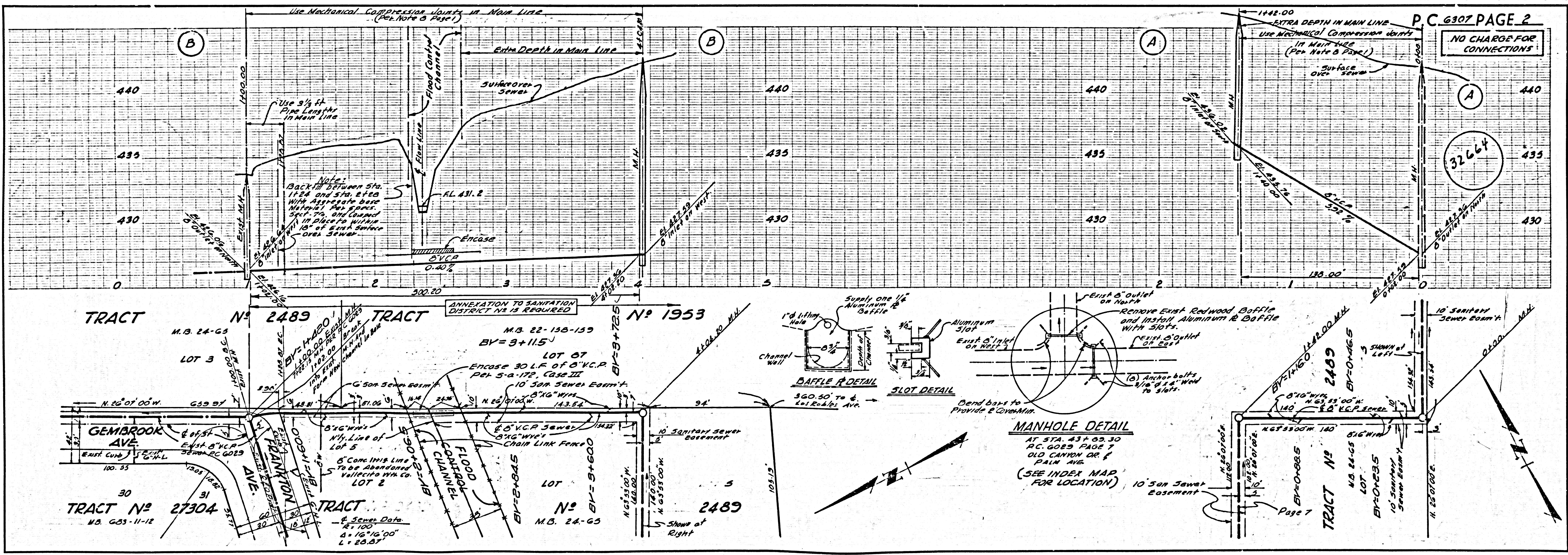
COUNTY OF LOS ANGELES, CALIFORNIA

APPROVED, JOHN A. LAMBIE, COUNTY ENGINEER APPROVED, J.R. PARNHART, CHIEF ENGINEER
S.A. DIST. NO. 13

By: *Russ E. Kelly* ASSIST. SANITATION ENGINEER By: *J.R. Parnhart* OFFICE ENGINEER

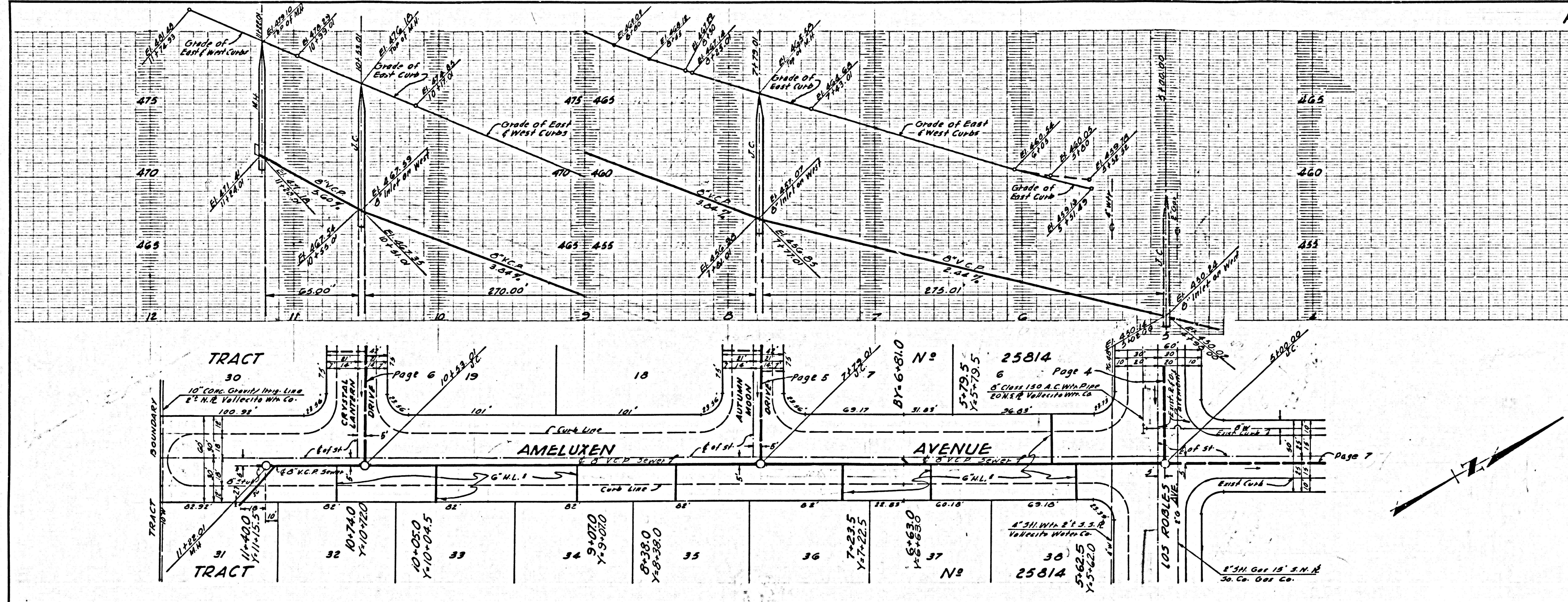
CHECKED BY: *R.V. Onda 9-11-62*
OFFICE OF COUNTY ENGINEER REG. C. E. NO. 2466

SUBMITTED: *W.C. Reinhardt 9-11-62*
SAN DIMAS REGIONAL ENGINEER



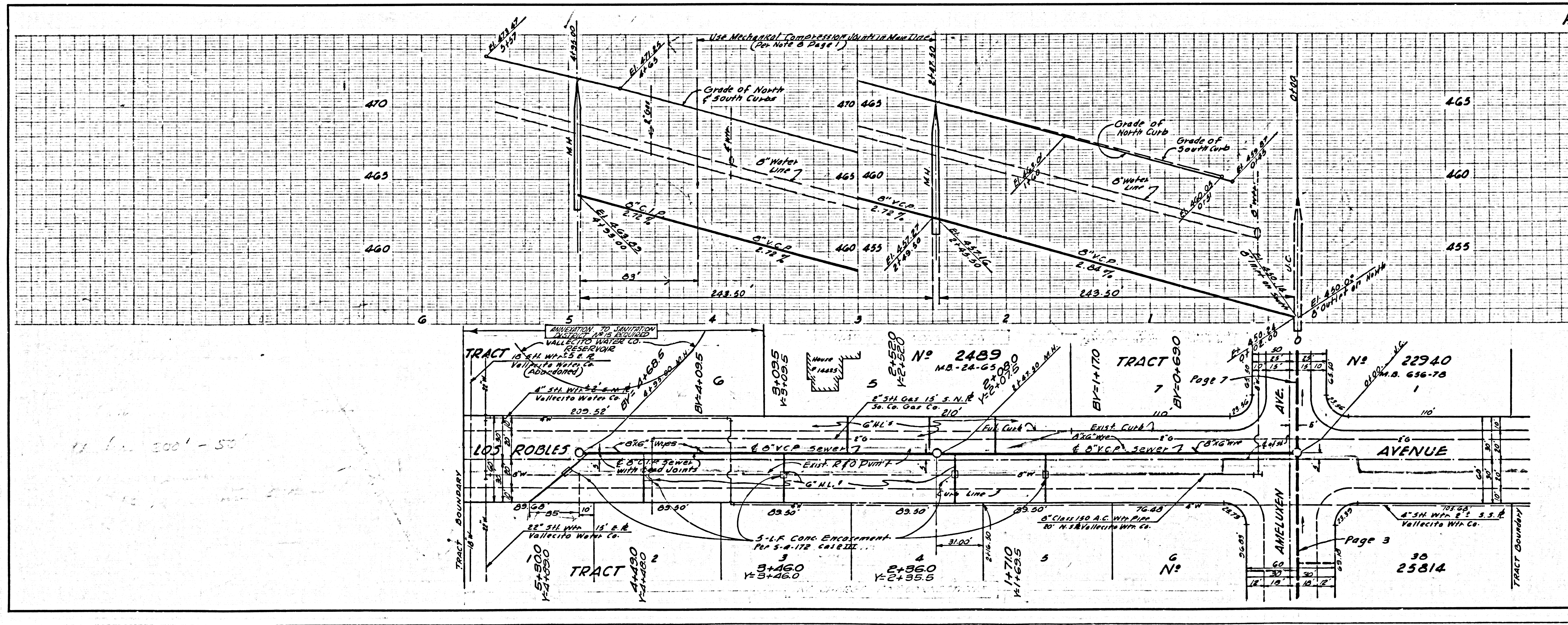
NO CHARGE FOR CONNECTIONS

32665



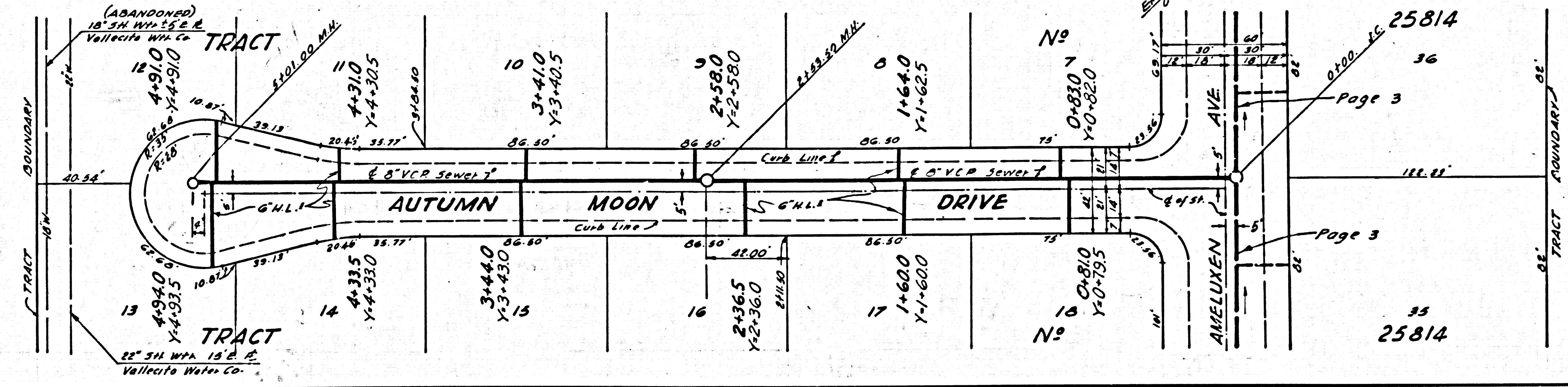
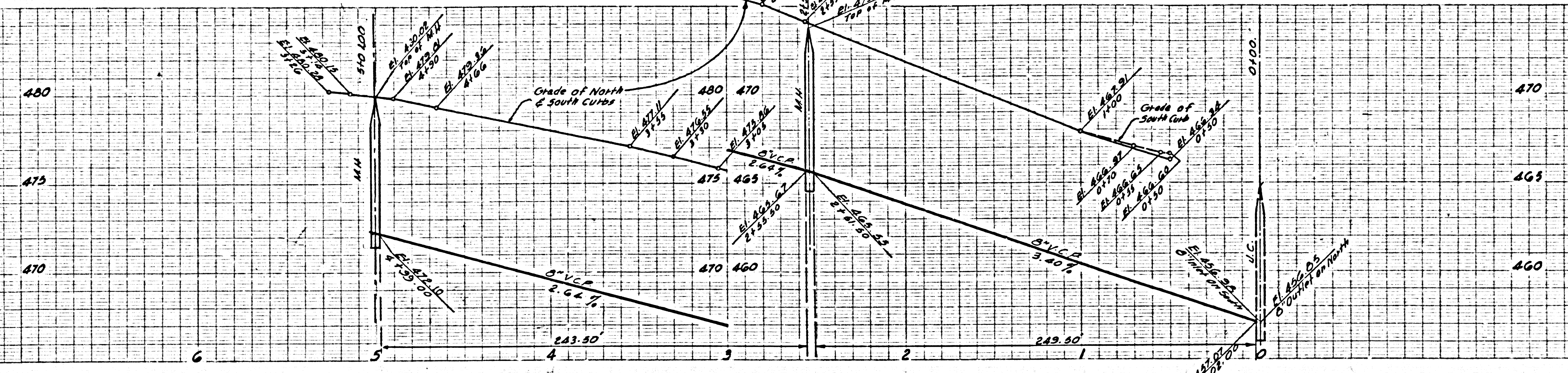
NO CHARGE FOR CONNECTIONS

32666



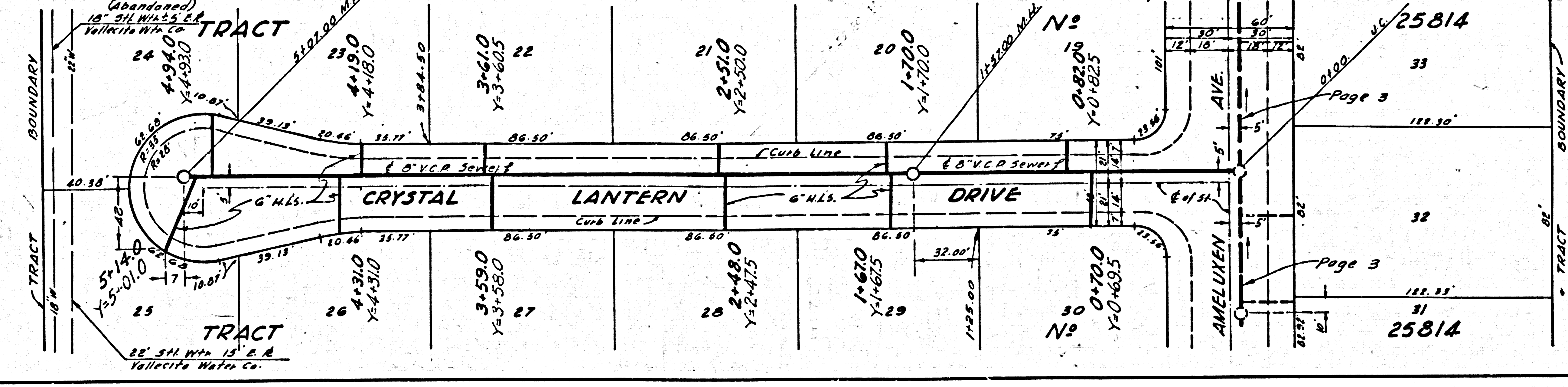
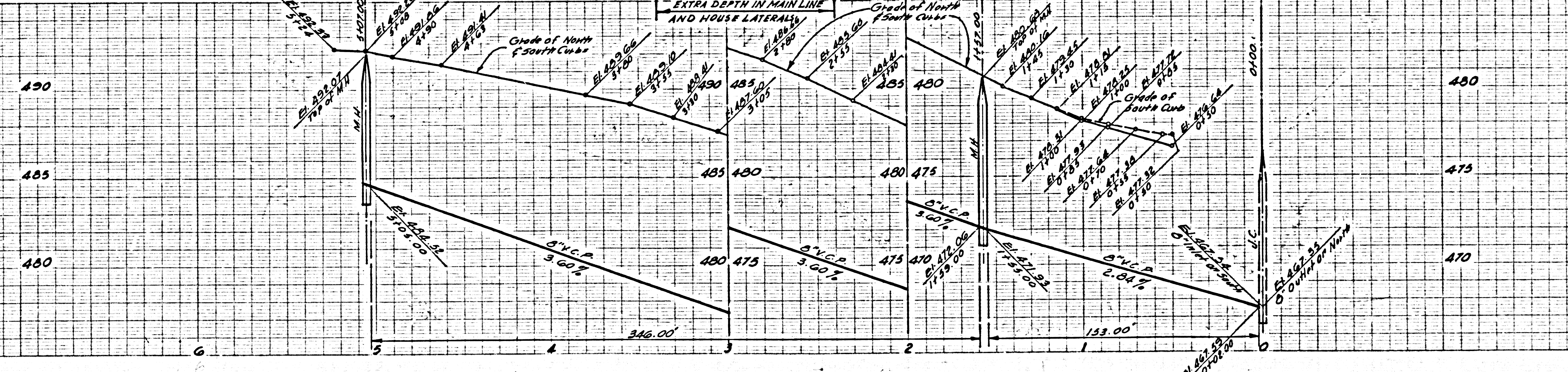
NO CHARGE FOR CONNECTIONS

32667



NO CHARGE FOR CONNECTIONS

32668



3267

