

NORWALK BLDG. DIST. NO. 4.2

PROFILE ALIGNMENT AND GRADE OF  
**SANITARY SEWERS** PAGE 1  
 P.C. 6308  
 J.N. 0358.72

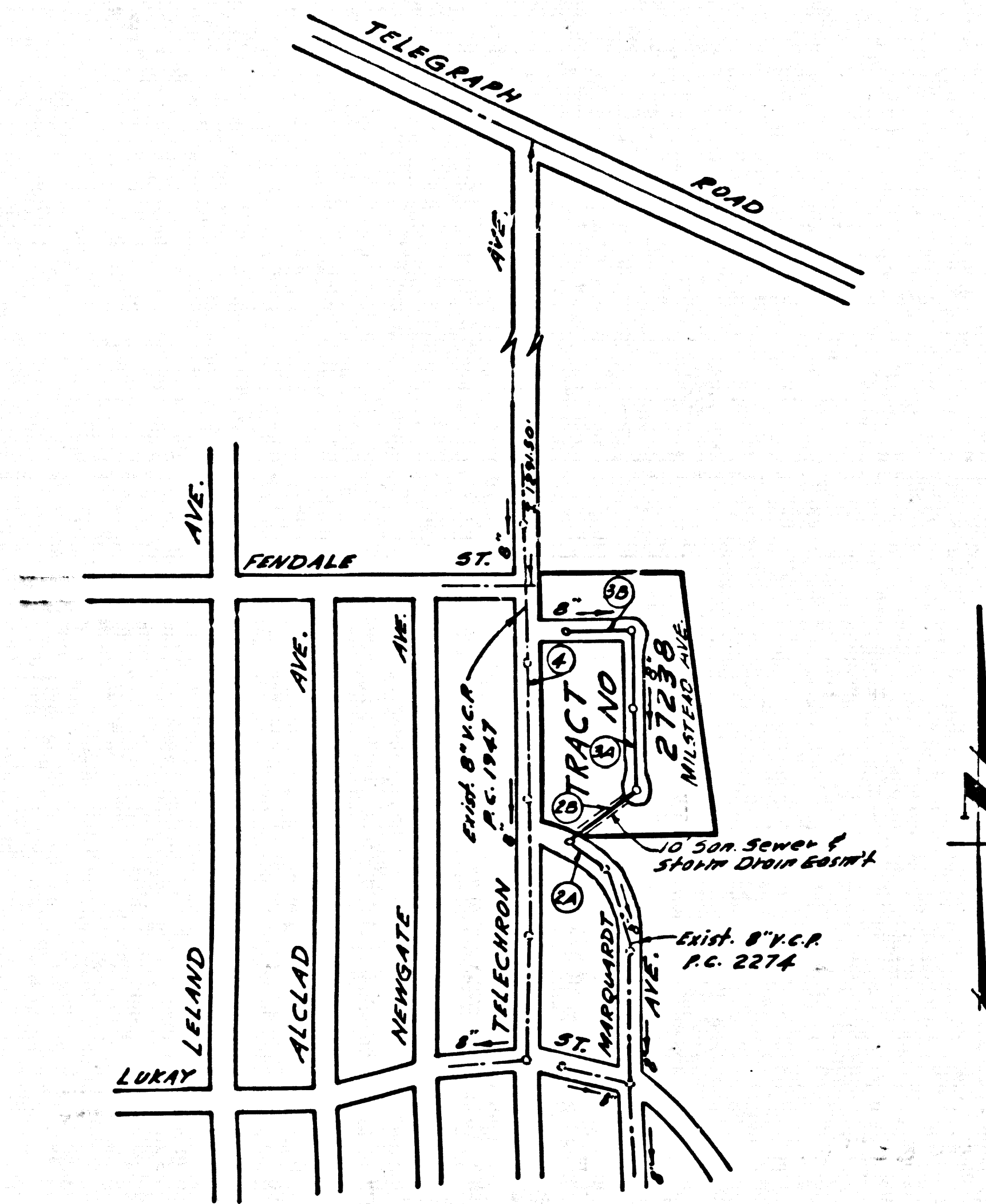
TRACT NO. 27238

PRIVATE CONTRACT NO. 6308

W.S. 34  
 2 SHEETS; 4 PAGES  
 SCALE: VERT. 1"=4'  
 HORIZ. 1"=40'  
 JULY, 1962  
 PREPARED IN THE OFFICES OF  
**KEMMERER ENGR. CO. INC.**

By Robert R. Flores  
 REG. C. E. NO. 1349

FOR LEGEND SEE PLAN NO. S-A-64



**INDEX MAP**  
 TRACT NO. 27238  
 P.C. 6308 SCALE: 1"=400'  
 J.N. 0358.72

NOTE: THE EXISTENCE AND APPROXIMATE LOCATION OF UNDERGROUND UTILITIES OR STRUCTURES SHOWN ON THESE PLANS WERE DETERMINED BY A SEARCH OF THE AVAILABLE PUBLIC RECORDS TO THE BEST OF OUR KNOWLEDGE THERE ARE NO EXISTING UNDERGROUND UTILITIES OR STRUCTURES EXCEPT AS SHOWN ON THIS MAP. THE CONTRACTOR IS REQUIRED TO TAKE DUE PRECAUTIONARY MEASURES TO PROTECT THE UTILITIES OR STRUCTURES SHOWN AND ANY OTHER UTILITIES OR STRUCTURES AT THE SITE. IT SHALL BE THE CONTRACTOR'S RESPONSIBILITY TO NOTIFY THE OWNERS OF THE UTILITIES OR STRUCTURES CONCERNED BEFORE STARTING WORK.

- NOTES:
1. PROVIDE STAKES ON THE PROPERTY LINE OR PROPERTY LINES PRODUCED AT RIGHT ANGLES TO THE SEWER LINE AT THE CENTER LINE OF EACH MANHOLE.
  2. NO REPRESENTATIVE OF THE COUNTY ENGINEER WILL SURVEY OR LAY OUT ANY PORTION OF THE WORK.
  3. THE OWNER OR HIS AUTHORIZED REPRESENTATIVE SHALL FURNISH THE COUNTY ENGINEER WITH GRADE SHEETS AND STATIONING FOR ALL HOUSE LATERALS AND Y BRANCHES AND SHALL PROVIDE STAKES FOR THEM AT THEIR PROPER LOCATIONS WITH STATIONING PLAINLY MARKED. ALL HOUSE LATERALS SHALL BE CONSTRUCTED IN A STRAIGHT ALIGNMENT AT RIGHT ANGLES FROM THE MAIN LINE SEWER EXCEPT AS SHOWN ON THE PLANS. ANY CHANGE IN ALIGNMENT SHALL BE REQUESTED IN WRITINGS BY THE PRIVATE ENGINEER.
  4. NO REVISIONS SHALL BE MADE IN THESE PLANS WITHOUT THE APPROVAL OF THE COUNTY ENGINEER.
  5. NO REVISIONS SHALL BE MADE IN THESE PLANS WITHOUT THE APPROVAL OF THE COUNTY ENGINEER.
  6. USE STANDARD MANHOLE FRAMES AND COVERS, S-117, EXCEPT AS NOTED.
  7. USE EXTRA STRENGTH PIPE - ALL PIPE IS STANDARD DEPTH, EXCEPT AS NOTED.
  8. USE CEMENT MORTAR OR MECHANICAL COMPRESSION JOINTS FOR ALL HOUSE LATERALS, SECS. 36 & 48, FOR MAIN LINE ONLY.
  9. RESURFACE ALL TRENCH WITHIN PAVED AREA TO MEET L.A. COUNTY ROAD DEPT. OR CALIF. STATE HIGHWAY REQUIREMENTS IN ACCORDANCE WITH PERMITS.
  10. ENCASE FOUR FEET OF SEWER AT POINTS OF INTERFERENCE WITH POLES, CASE III, S-172.
  11. HOUSE LATERALS TO BE CONSTRUCTED WITH INVERTS AT PROPERTY LINE 6 FEET BELOW CURB GRADE.
  12. ALL STRUCTURES SHALL BE BRICK SEWER STRUCTURES, S-104, PORTLAND CEMENT MANHOLES PER S-8, 131 OR S-8, 117 MAY BE USED AS AN ALTERNATE IN LOCATIONS APPROVED BY THE COUNTY ENGINEER.
  13. FOR ALLOWABLE LEAKAGE TEST USE FORMULA NO. 1, SPEC. SEC. 54.
  14. MANHOLE TOPS IN UNIMPROVED RIGHTS-OF-WAY TO BE SIX INCHES ABOVE FINISHED GRADE.
  15. THE CONTRACTOR SHALL NOTIFY THE CONSTRUCTION & PUBLIC SAFETY DIVISION BY TELEPHONE, MADISON 5-4771, EXT. 864, AT LEAST TWENTY-FOUR HOURS BEFORE STARTING ANY WORK UNDER THIS CONTRACT.
  16. STANDARD SPECIFICATIONS DATED MAY 25, 1958 APPLY IN THE CONSTRUCTION OF THIS PROJECT.
  17. USE MECHANICAL COMPRESSION JOINTS FOR ALL HOUSE LATERALS PER SPEC. SEC. 50.
  18. THE PRIVATE ENGINEER SHALL FURNISH THE HOUSE LATERAL DEPTH AT THE PROPERTY LINE, BELOW THE TOP OF THE CURB ELEVATION FOR EACH HOUSE LATERAL ON THE GRADE SHEET.
  19. WHERE EVER GROUND WATER IS ENCOUNTERED DURING THE CONSTRUCTION OF THE SEWERS, THE U.C.P. JOINTS SHALL BE OF JOINT COMPOUND PER SPEC. 3, SECS. 33 & 48, OR MECHANICAL COMPRESSION JOINTS PER SPEC. 3, SECS. 36.
  20. ALL STATE & LOCAL TRENCH SAFETY ORDERS WILL BE ENGLISH ENFORCED.

**BENCH MARK**  
 S.Y. 1165 - CH. 5th. Conc. Ck. ± 20' N. S.W.  
 Anaheim - Telegraph Rd. ± 28' E. Mills Ave.  
 ELEV. 155.262 Base Line 1955

**NO CHARGE FOR CONNECTIONS**  
 J. J. [Signature] 11-26-62

NO CONNECTIONS FOR THE DISPOSAL OF INDUSTRIAL WASTES SHALL BE MADE TO SEWERS SHOWN ON THESE DRAWINGS WITHOUT WRITTEN PERMISSION FROM THE CHIEF ENGINEER AND GENERAL MANAGER OF THE COUNTY SANITATION DISTRICTS.

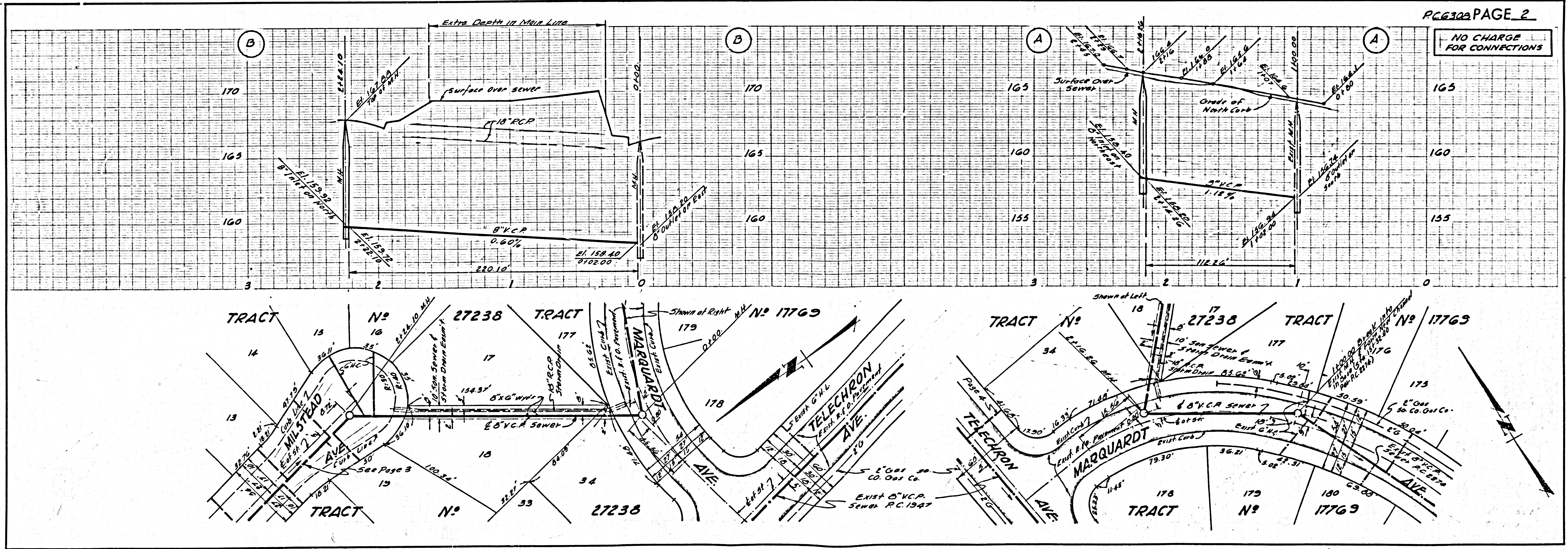
NOTE: GRADES TO WHICH THIS IMPROVEMENT IS TO BE CONSTRUCTED ARE SHOWN ON PLANS AND PROFILES. GRADE POINTS FOR TOP OF CURBS, CENTER LINE OF STREETS OR CENTER LINE OF ALLEYS ARE SHOWN BY CIRCLES ON PROFILES. AT ALL POINTS BETWEEN DESIGNATED POINTS THE GRADE SHALL BE ESTABLISHED SO AS TO CONFORM TO A STRAIGHT LINE DRAWN BETWEEN SAID DESIGNATED POINTS. ELEVATIONS ARE IN FEET ABOVE U.S.C. & G.S. SEA LEVEL DATUM OF 1929. THIS DRAWING AND THE DATA HEREON ARE HEREBY MADE A PART OF THE SPECIFICATIONS. BEFORE WORK CAN BE STARTED THE CONTRACTOR MUST OBTAIN A PERMIT TO EXCAVATE IN COUNTY STREETS FROM THE L. A. COUNTY ROAD DEPT. (DISTRICT OFFICE NO. 4) AND PAY A FEE TO THE COUNTY ENGINEER ROOM 300 COUNTY BLDG., BUILDING, 108 W. 2nd ST. SUFFICIENT TO COVER THE COST OF CONSTRUCTION INSPECTION AND RECORD PLANS. APPROVAL OF THIS PLAN BY THE COUNTY OF LOS ANGELES DOES NOT CONSTITUTE A REPRESENTATION AS TO THE ACCURACY OF THE LOCATION OR NON-EXISTENCE OF ANY UNDERGROUND UTILITY PIPE OR STRUCTURE WITHIN THE LIMITS OF THIS PROJECT. THIS NOTE APPLIES TO ALL PAGES. IF WORK IS TO BE DONE IN A STATE HIGHWAY, A PERMIT MUST BE OBTAINED FROM THE STATE OF CALIFORNIA, DIVISION OF HIGHWAYS, 128 SOUTH SPRING STREET.

COUNTY OF LOS ANGELES, CALIFORNIA

APPROVED, JOHN A. LAMBIE, COUNTY ENGINEER APPROVED, J.D. PARHURST, CHIEF ENGINEER  
 SAN. DIST. NO. 18

BY Robert R. Flores ASSISTANT SANITATION ENGINEER  
 CHECKED BY Al. White OFFICE ENGINEER  
 OFFICE OF COUNTY ENGINEER, REG. C. E. NO. 249 L

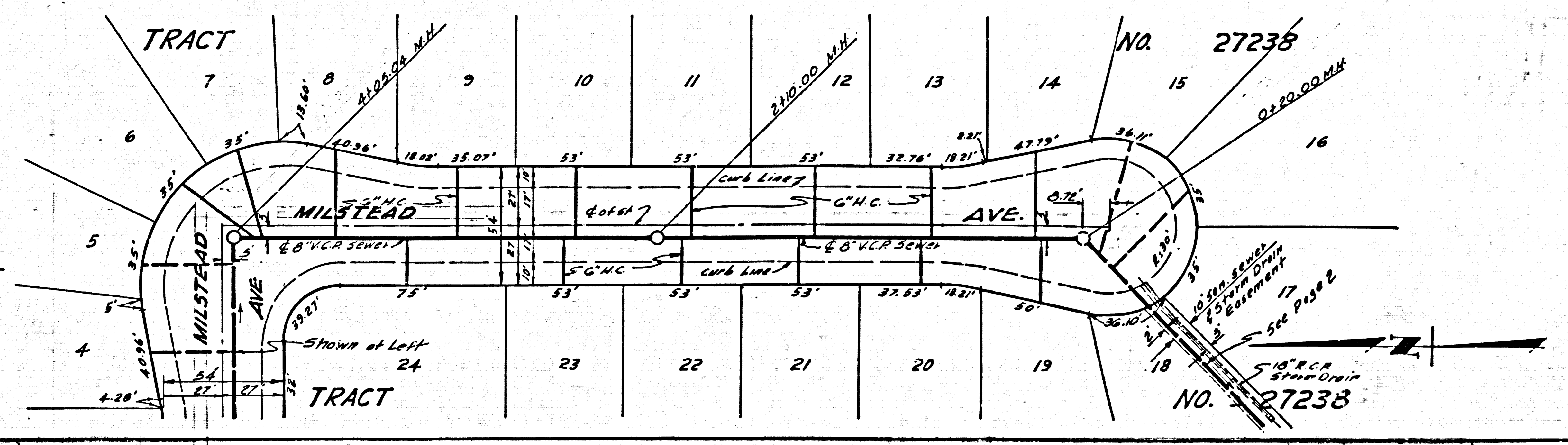
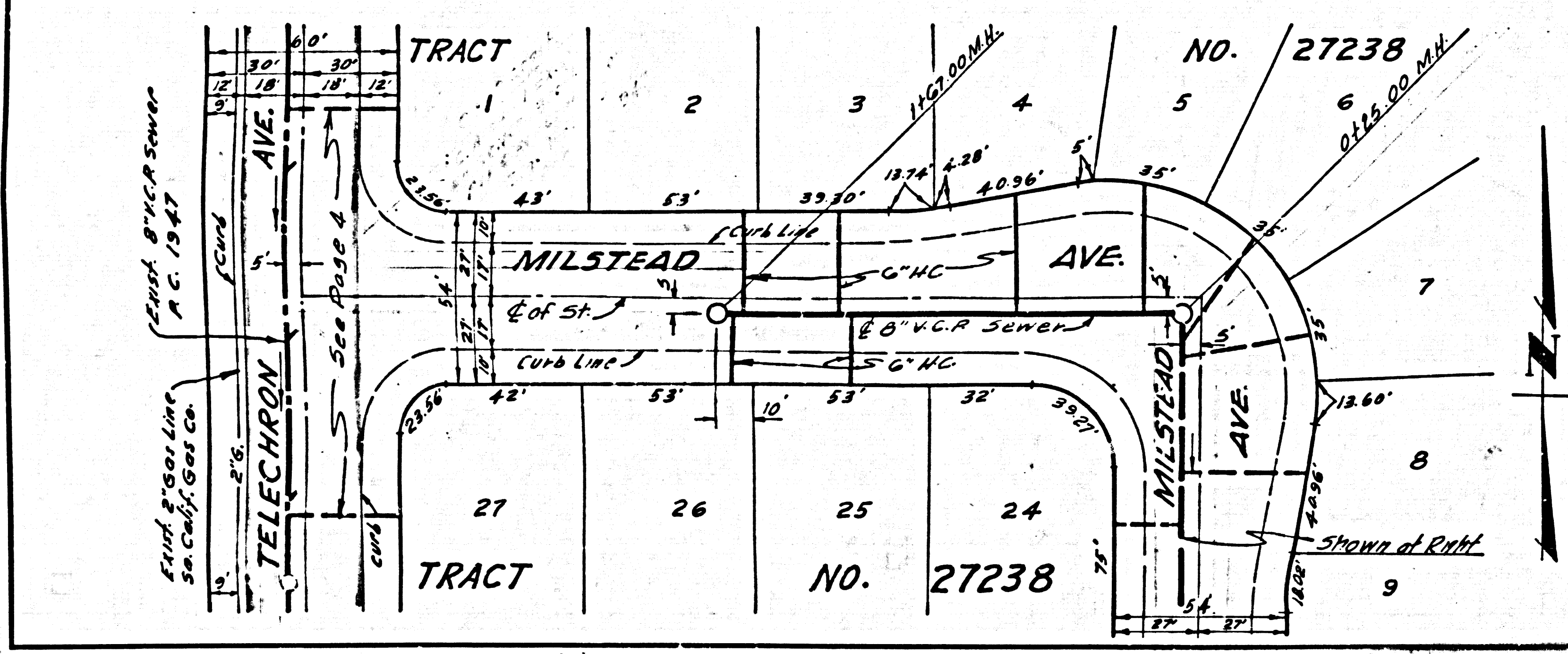
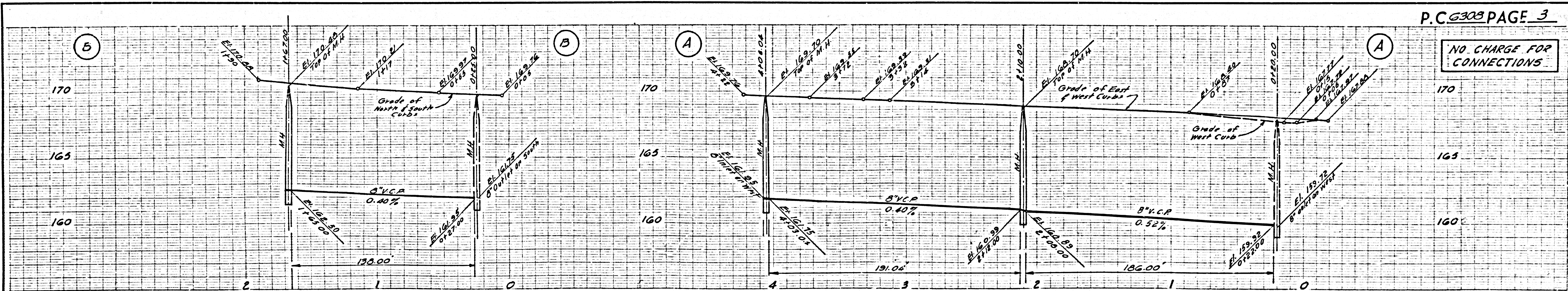
SUBMITTED: John L. [Signature] 11-27-62  
 LOS CERRITOS REGIONAL ENGINEER REG. C. E. NO. 3871



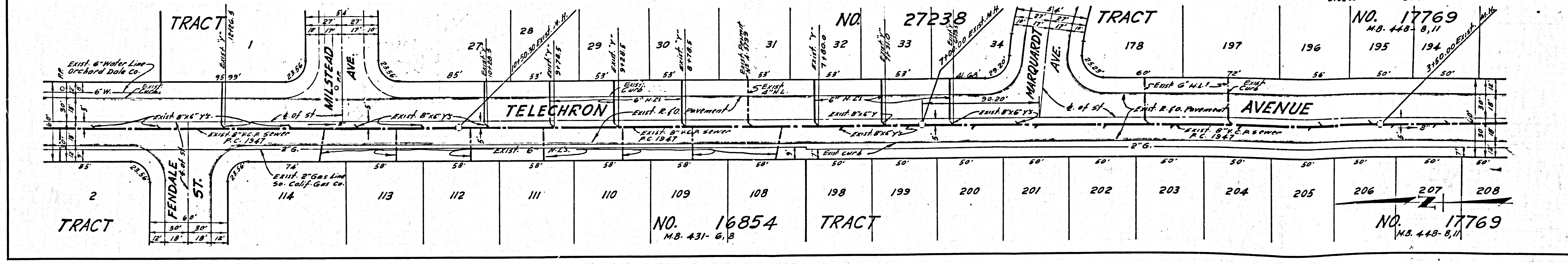
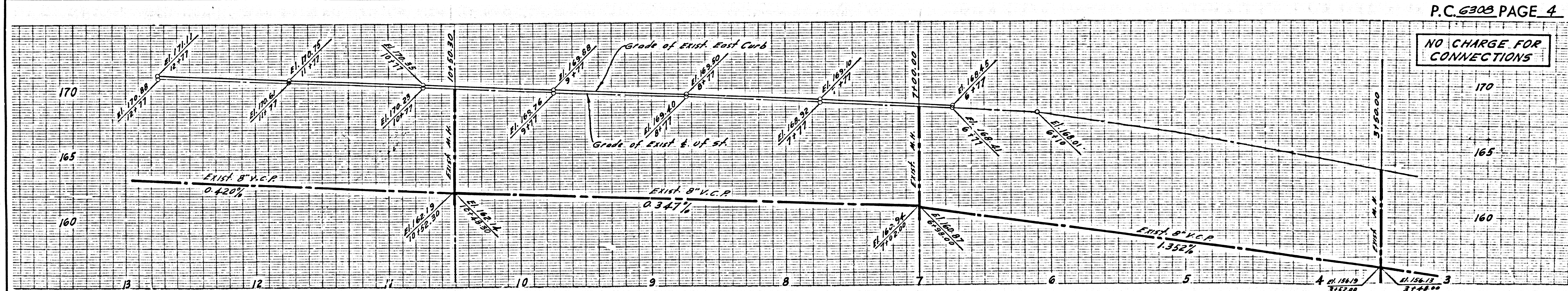
PC 6308 PAGE 2

NO CHARGE FOR CONNECTIONS

NO CHARGE FOR CONNECTIONS



NO CHARGE FOR CONNECTIONS



S 6023 00 8555 00 T 001