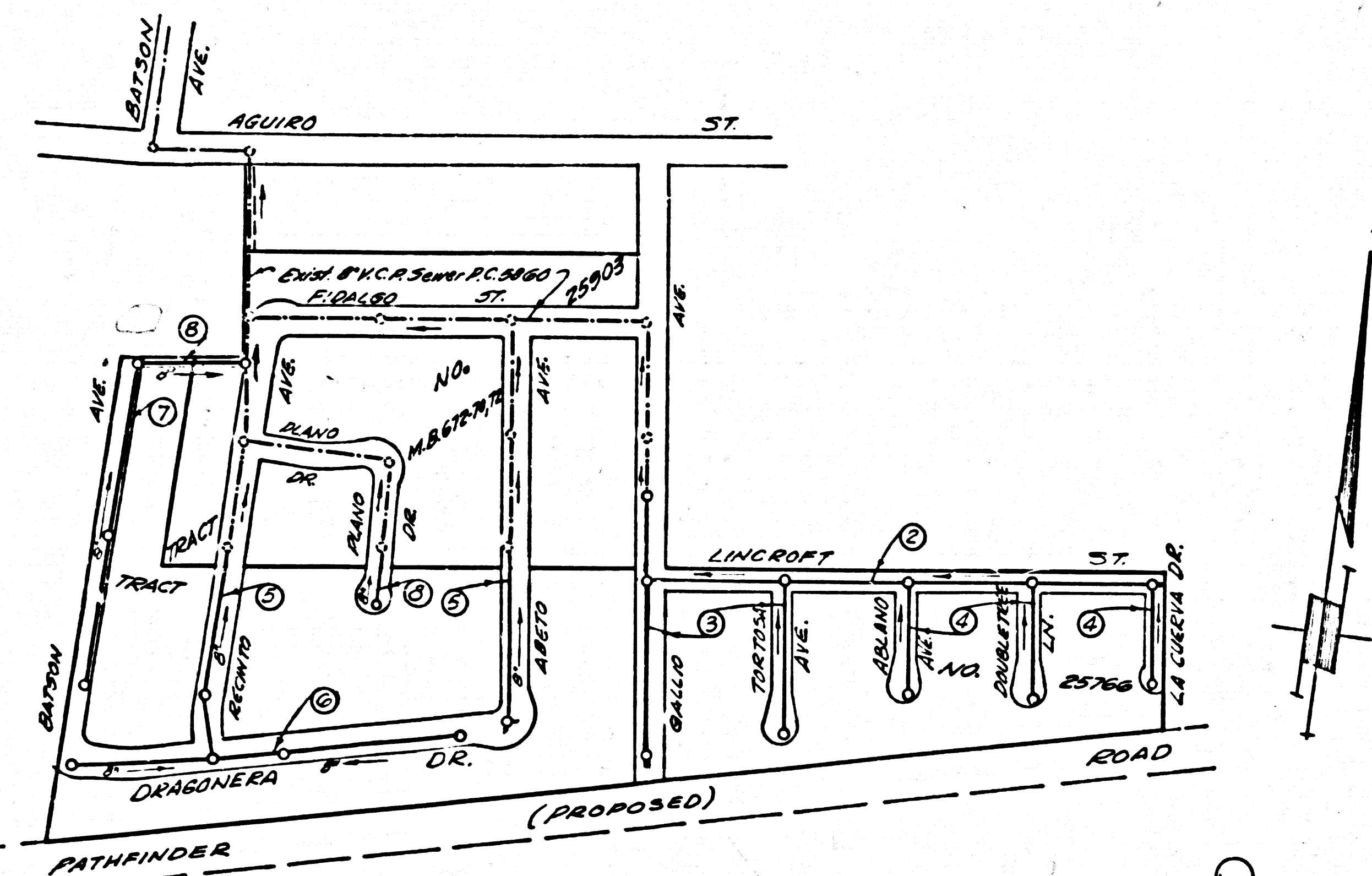


PUENTE BLDG. DIST. NO. 2

PROFILE ALIGNMENT AND GRADE OF
SANITARY SEWERS PAGE 1
 TO BE CONSTRUCTED IN
TRACT NO. 25766
PRIVATE CONTRACT NO. 6309



INDEX MAP
 TRACT NO. 25766
 P.C. 6309 Scale: 1"=300'

B.M. 56.1850 84°1' P. 2° D. 295' W. of
 Gallio Ave. 1.50' N. 1/4 E. Pathfinder
 (Offerbein Quad) Elev. 634.036 (1935)

- NOTES:**
1. PROVIDE STAKES ON THE PROPERTY LINE OR PROPERTY LINES PRODUCED AT RIGHT ANGLES TO THE SEWER LINE AT THE CENTER LINE OF EACH MANHOLE.
 2. NO REPRESENTATIVE OF THE COUNTY ENGINEER WILL SURVEY OR LAY OUT ANY PORTION OF THE WORK.
 3. THE OWNER OR HIS AUTHORIZED REPRESENTATIVE SHALL FURNISH THE COUNTY ENGINEER WITH GRADE SHEETS AND STATIONING FOR ALL HOUSE LATERALS AND Y BRANCHES AND SHALL PROVIDE STAKES FOR THEM AT THEIR PROPER LOCATIONS WITH STATIONING PLAINLY MARKED. ALL MANHOLES SHALL BE CONSTRUCTED IN A STRAIGHT ALIGNMENT AT RIGHT ANGLES TO THE MAIN LINE SEWER EXCEPT AS SHOWN BY THE PLANS.
 4. THE PRIVATE ENGINEER SHALL FURNISH THE HOUSE LATERAL DEPTH AT THE PROPERTY LINE BELOW THE TOP OF CURB ELEVATION FOR EACH HOUSE LATERAL ON THE GRADE SHEET.
 5. NO REVISIONS SHALL BE MADE IN THESE PLANS WITHOUT THE APPROVAL OF THE COUNTY ENGINEER.
 6. USE STANDARD MANHOLE FRAMES AND COVERS, 2-117, EXCEPT AS NOTED.
 7. USE EXTRA STRENGTH PIPE. ALL PIPES 15 STANDARD DEPTH, EXCEPT AS NOTED.
 8. USE CEMENT MORTAR FOR ALL V.C.P. JOINTS IN MAIN LINE PER 2-102, SECS. 34 & 40, EXCEPT AS NOTED.
 9. RESURFACE ALL TRENCH WITHIN PAVED AREA TO MEET L.A. COUNTY ROAD DEPT. OR CALIF. STATE HIGHWAY REQUIREMENTS IN ACCORDANCE WITH PERMITS.
 10. ENCASE FOUR FEET OF SEWER AT POINTS OF INTERFERENCE WITH POLES, CASE III, 5-117, CASE II, 2 FEET IN OTHER CASES WITHIN THE RIGHT OF WAY OF STATE HIGHWAYS AS NOTED.
 11. HOUSE LATERALS TO BE CONSTRUCTED WITH INVERTS AT PROPERTY LINE 6 FEET BELOW CURB GRADE EXCEPT AS NOTED.
 12. ALL STRUCTURES SHALL BE BRICK SEWER STRUCTURES, 3-104, PRECAST CONCRETE MANHOLES PER 5-4.125.
 13. FOR ALLOWABLE LEAKAGE TEST USE FORMULA NO. 1 PER 5-4.125, SECS. 34 & 40.
 14. MANHOLE TOPS IN UNIMPROVED RIGHTS-OF-WAY TO BE SIX INCHES ABOVE FINISHED GRADE.
 15. THE CONTRACTOR SHALL NOTIFY THE DIVISION BY TELEPHONE, MADISON 3-417, EXT. 355 AT LEAST TWENTY-FOUR HOURS BEFORE STARTING ANY WORK UNDER THIS CONTRACT.
 16. STANDARD SPECIFICATIONS DATED MAY 26, 1962 SHALL APPLY IN THE CONSTRUCTION OF THIS PROJECT.
 17. USE MECHANICAL COMPRESSION JOINTS FOR ALL V.C.P. HOUSE LATERALS PER 5-4.125, SEC. 36 & 42.
 18. ALL STATE AND LOCAL TRENCH SAFETY ORDERS WILL BE RIGIDLY ENFORCED.
 19. WHERE GROUND WATER IS ENCOUNTERED DURING THE CONSTRUCTION OF THE SEWERS, THE V.C.P. JOINTS SHALL BE OF JUMP CONSTRUCTION PER 5-4.125, SEC. 36 & 42, OR MECHANICAL COMPRESSION JOINTS PER 5-4.125, SEC. 36.
 20. IN THE COURSE OF CONSTRUCTION IF IT IS DETERMINED THAT THERE IS LESS THAN FOUR FEET OF COVER OVER THE TOP OF A MAIN LINE OR HOUSE LATERAL V.C.P. SEWER WHICH IS NOT SHOWN ON THE PLANS, THE PIPE SHALL BE ENCASED PER 5-4.125, CASE II, UNLESS OTHERWISE APPROVED BY THE COUNTY ENGINEER.

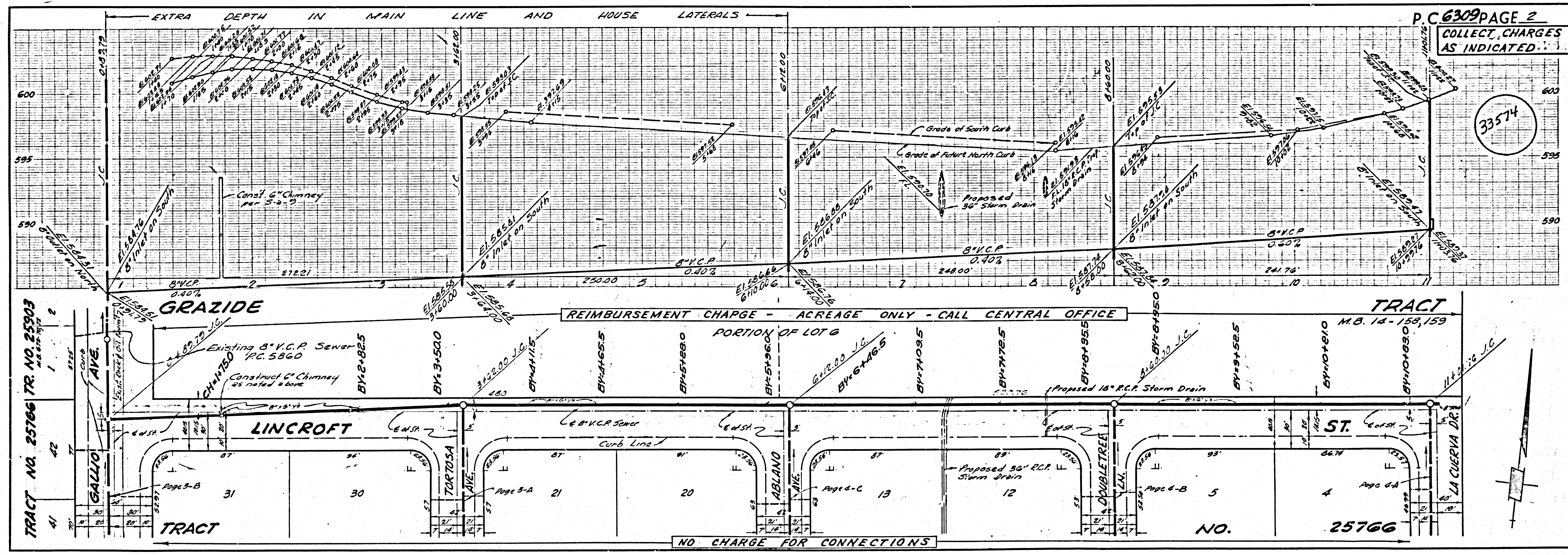
W.S. 38
 4 SHEETS; 8 PAGES
 SCALE: VERT. 1"=4'
 HORIZ. 1"=40'
 MARCH, 1962
 PREPARED IN THE OFFICES OF
HANS C. THOMSEN
 BY: Hans C. Thomsen
 REG. C. E. NO. 9244
 FOR LEGEND SEE PLAN NO. S-A-64

NOTE:
 GRADES TO WHICH THIS IMPROVEMENT IS TO BE CONSTRUCTED ARE SHOWN ON PLANS AND PROFILES. GRADE POINTS FOR TOP OF CURBS, CENTER LINE OF STREETS, OR CENTER LINE OF ALLEYS ARE SHOWN BY CIRCLES ON PROFILES. AT ALL POINTS BETWEEN DESIGNATED POINTS THE GRADE SHALL BE ESTABLISHED SO AS TO CONFORM TO A STRAIGHT LINE DRAWN BETWEEN SAID DESIGNATED POINTS.
 ELEVATIONS ARE IN FEET ABOVE U.S.C. & G.S. SEA LEVEL DATUM OF 1929.
 THIS DRAWING AND THE DATA HEREON ARE HEREBY MADE A PART OF THE SPECIFICATIONS.
 WORK SHALL BE CONSTRUCTED ACCORDING TO SPECIFICATIONS ON FILE IN THE OFFICE OF THE COUNTY ENGINEER AND SHALL BE PROSECUTED ONLY IN THE PRESENCE OF THE COUNTY ENGINEER.
 BEFORE WORK CAN BE STARTED, THE CONTRACTOR MUST OBTAIN A PERMIT TO EXCAVATE IN COUNTY STREETS FROM THE L. A. COUNTY ROAD DEPT., DISTRICT OFFICE NO. 10 AND PAY A FEE TO THE COUNTY ENGINEER ROOM 807 COUNTY ENGINEER'S BLDG. 100 N. 2ND ST., SUFFICIENT TO COVER THE COST OF CONSTRUCTION INSPECTION AND RECORD PLANS.
 APPROVAL OF THIS PLAN BY THE COUNTY OF LOS ANGELES DOES NOT CONSTITUTE A REPRESENTATION AS TO THE ACCURACY OF THE LOCATION OF OR THE EXISTENCE OR NON-EXISTENCE OF ANY UNDERGROUND UTILITY PIPE, OR STRUCTURE WITHIN THE LIMITS OF THIS PROJECT. THIS NOTE APPLIES TO ALL PAGES.
 IF WORK IS TO BE DONE IN A STATE HIGHWAY, A PERMIT MUST BE OBTAINED FROM THE STATE OF CALIFORNIA, DIVISION OF HIGHWAYS, 120 SOUTH SPRING STREET.

COUNTY OF LOS ANGELES, CALIFORNIA
 APPROVED, JOHN A. LAMBIE, COUNTY ENGINEER
 APPROVED, J. A. LAMBIE, CHIEF ENGINEER
 CO. SAN. DIST. NO. 21
 BY: *[Signature]* ASSISTANT SANITATION ENGINEER
 BY: *[Signature]* OFFICE ENGINEER
 CHECKED BY: *[Signature]*
 OFFICE OF COUNTY ENGINEER, REG. C. E. NO. 9436
 SUBMITTED BY: *[Signature]* 10-9-62
 SAN DIMAS REGIONAL ENGINEER

COLLECT CHARGES AS INDICATED
[Signature] 4/2/62

NO CONNECTIONS FOR THE DISPOSAL OF INDUSTRIAL WASTES SHALL BE MADE TO SEWERS SHOWN ON THESE DRAWINGS WITHOUT WRITTEN PERMISSION FROM THE CHIEF ENGINEER AND GENERAL MANAGER OF THE COUNTY SANITATION DISTRICTS.

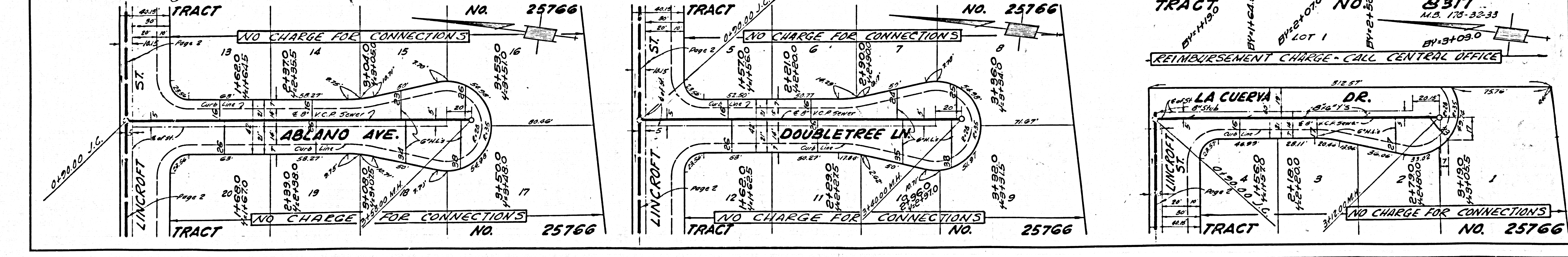
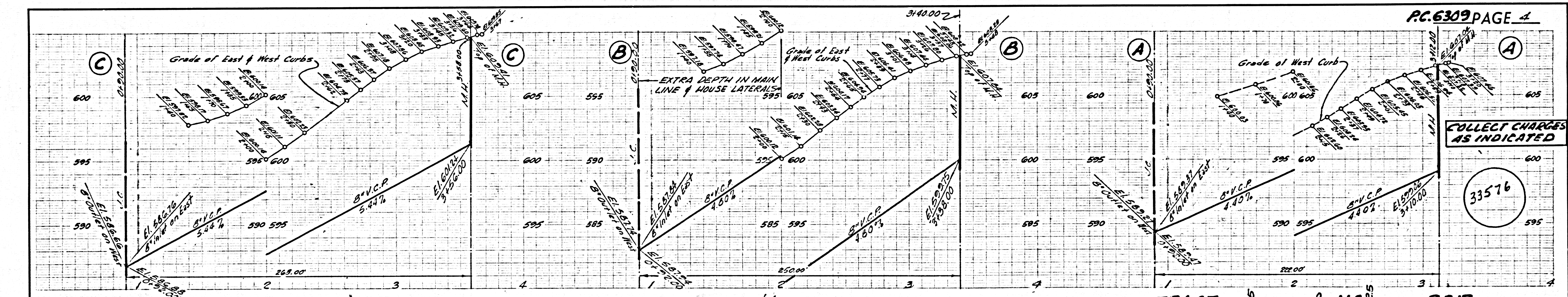
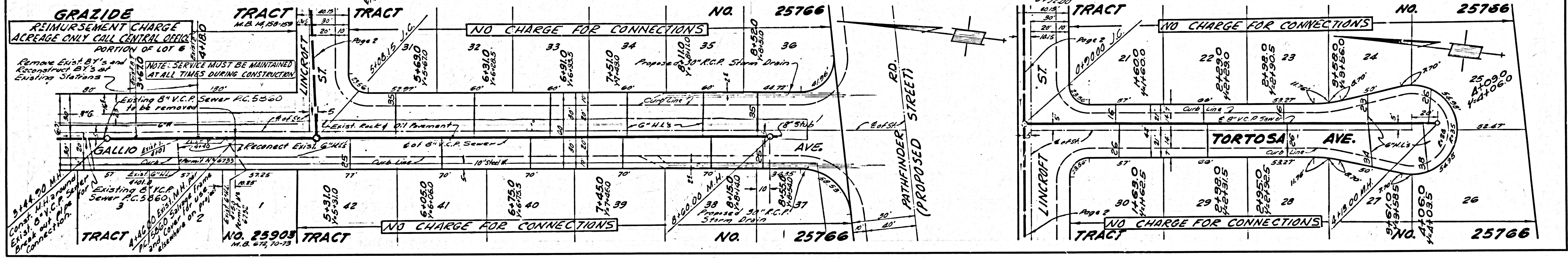
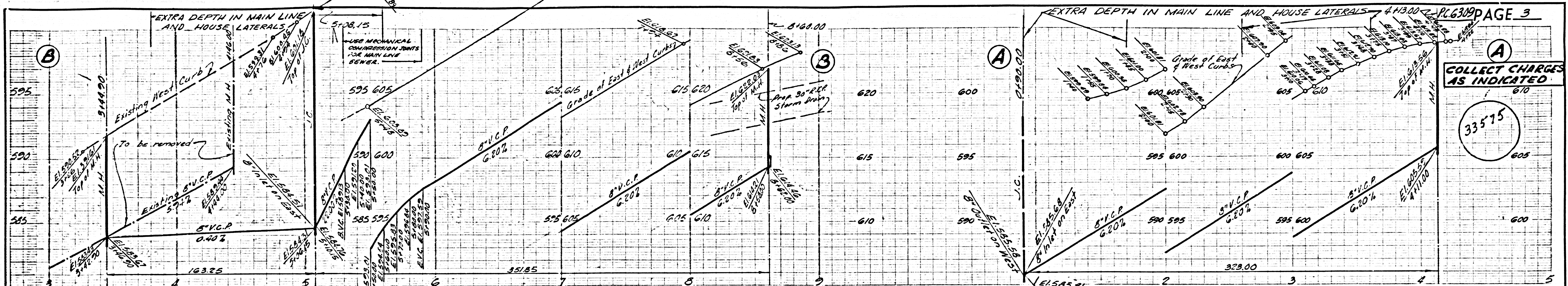


P.C. 6309 PAGE 2
COLLECT CHARGES AS INDICATED

TRACT NO. 25766 TR. NO. 25903
 M.B. 14-158,159

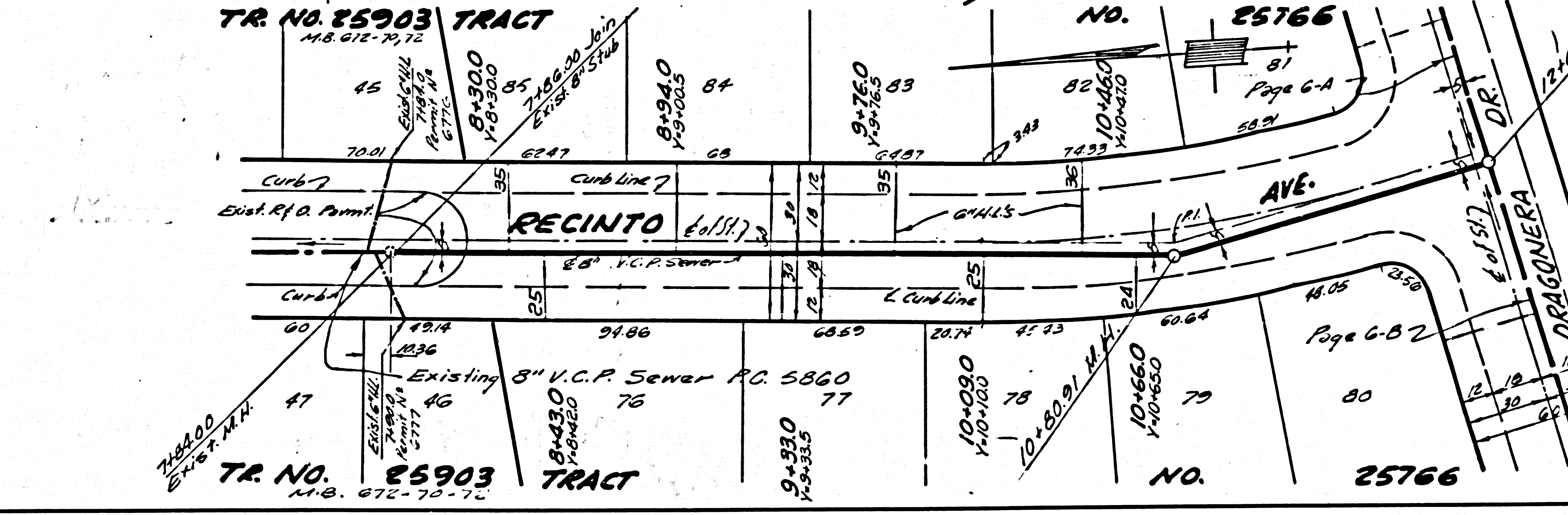
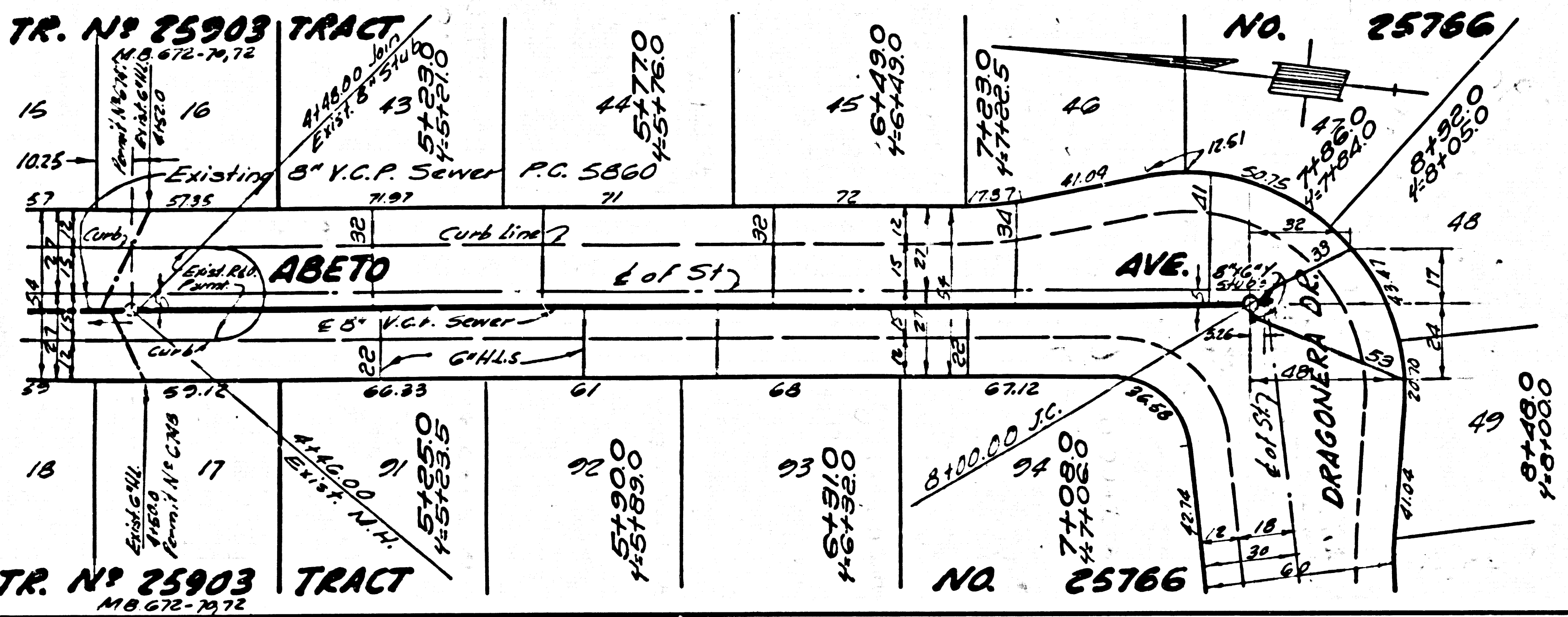
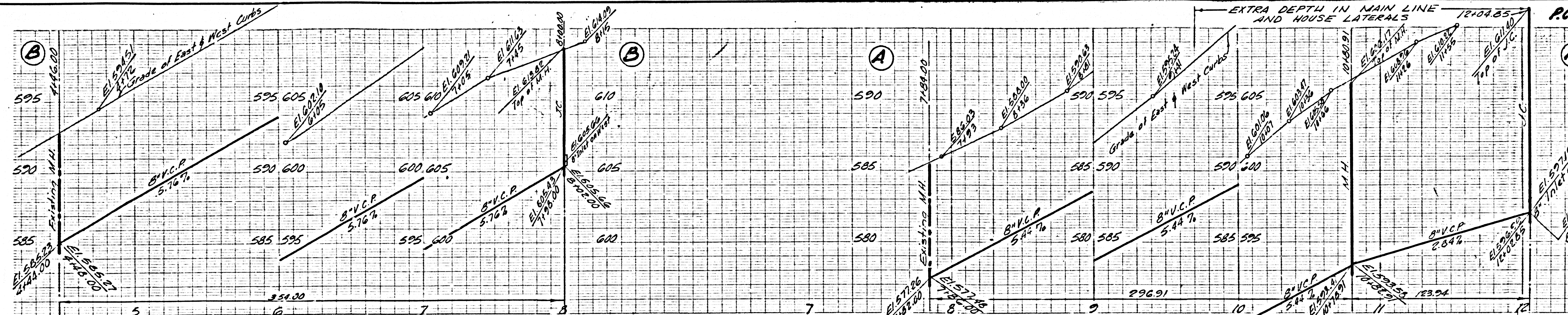
REIMBURSEMENT CHARGE - ACREAGE ONLY - CALL CENTRAL OFFICE

NO CHARGE FOR CONNECTIONS



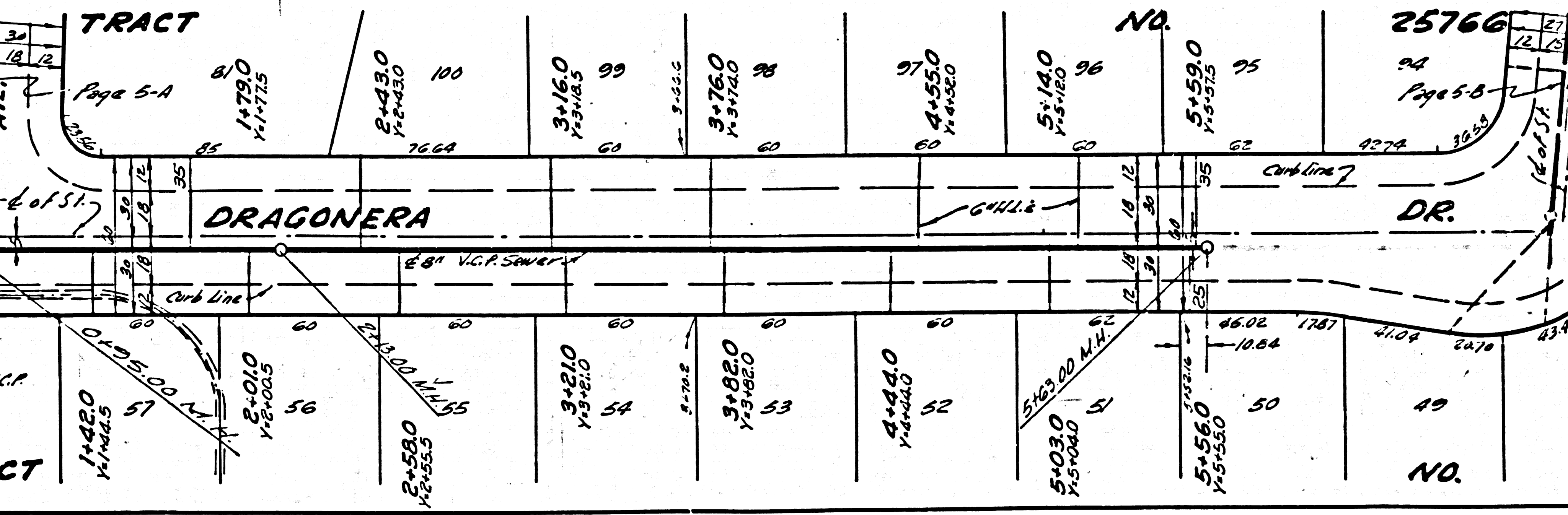
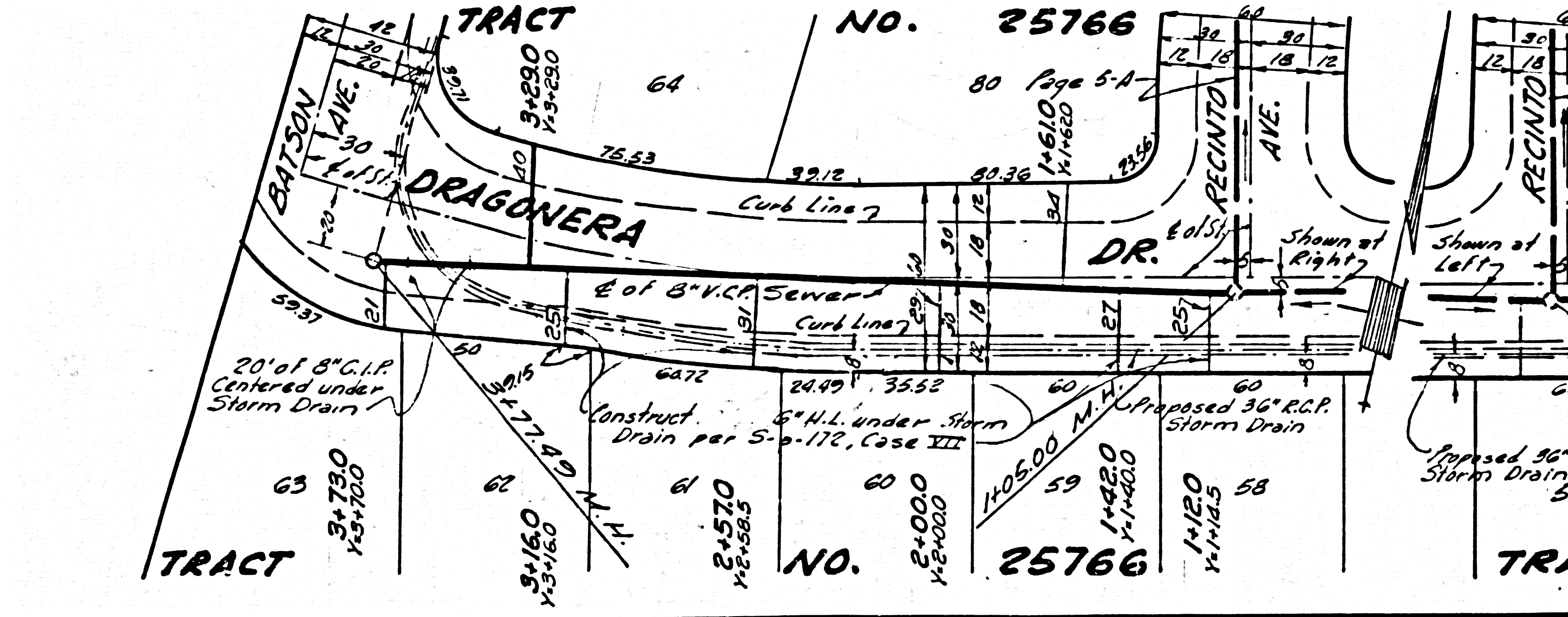
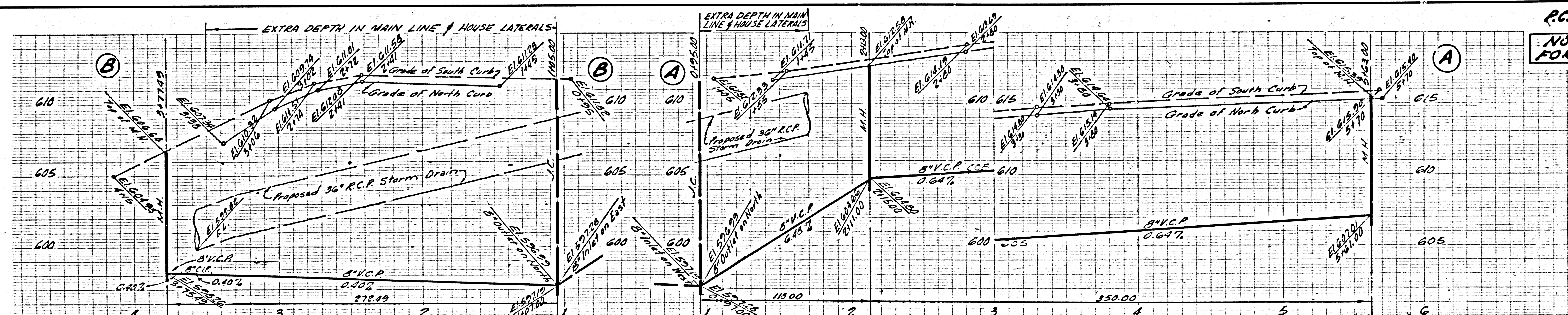
NO CHARGE FOR CONNECTIONS

33577



NO CHARGE FOR CONNECTIONS

33578

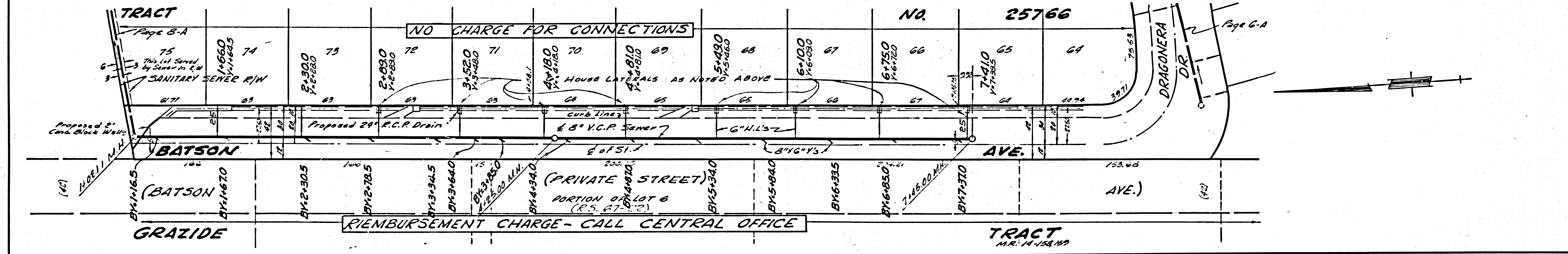
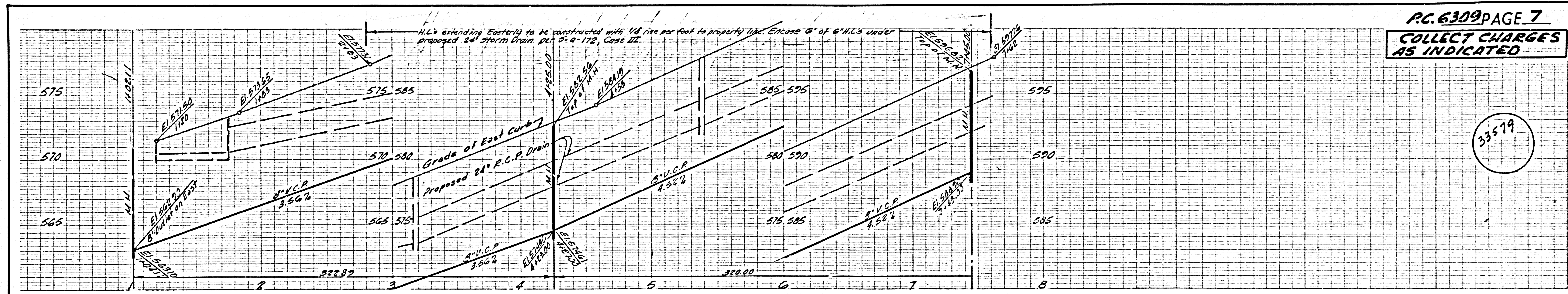


PC. 6309

TRACT NO. 52522

2

33579



33580

