

DOUBLE SCALE
SAN DIMAS BLDG. DIST. NO. 10

PROFILE ALIGNMENT AND GRADE OF P.C. 6311
SANITARY SEWERS PAGE 1
TO BE CONSTRUCTED IN JN 0358.74
TRACT N° 25987

PRIVATE CONTRACT NO. 6311

W.S. 39
5 SHEETS; 9 PAGES

SCALE: VERT. 1"=5' HORIZ. 1"=40'

JUNE, 1962

PREPARED IN THE OFFICES OF

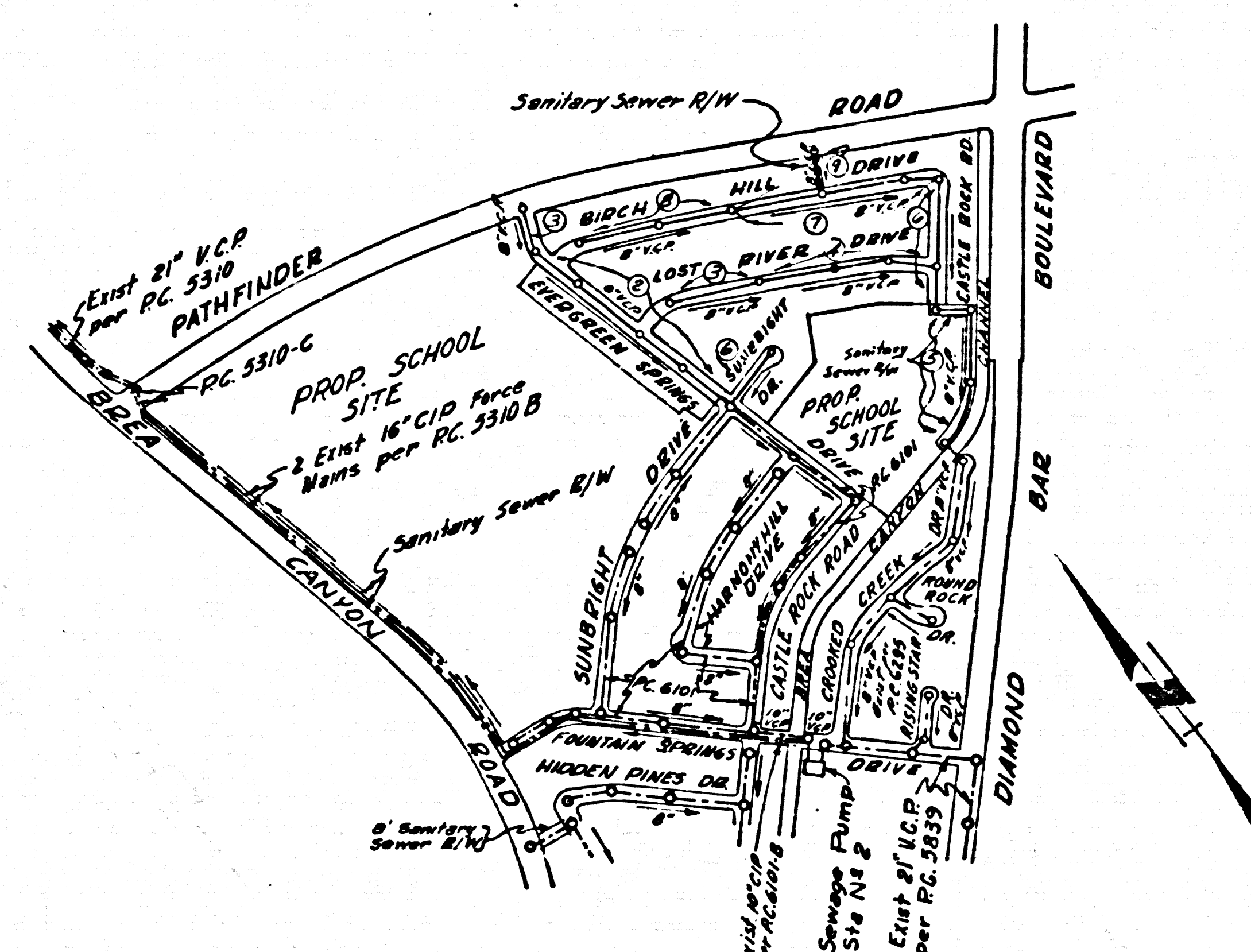
DUTCH HOLZHAUER AND ASSOCIATES

7 West Holliston Avenue
Alhambra, California, 91801

REG. C. E. NO. 10219

FOR LEGEND SEE PLAN NO. S-A-64

33047



INDEX MAP
TRACT N° 25987
Scale 1"=600'
P.C. 6311

REVISION:
Page 5-B Lowered Sewer Grade on
Evergreen Springs Drive from
Sta 11+25.09 to Sta. 13+02.17
APPROVED: *B.T. Norling* Date: 12-10-62
R.E. N° 11636

COLLECT CHARGE
AS INDICATED

NOTE: ISSUE PERMITS FOR LOTS 1-16
FROM P.C. 6101.

BENCH MARK:
56 1009 Road Dept BM T40 near 5a end
concrete headwall, N+140+91 ± 20' W of
Bree Canyon Road 0.65 miles North of
Bree Canyon City Rd.
QUAD. OTTERBEIN 1935 ELEV 727.345

UNDERGROUND STRUCTURES

All underground utilities or structures reported by the owner or others and those shown on the records examined are indicated with their approximate location and extent.

The owner by accepting these plans or proceeding with improvements pursuant thereto agrees to assume liability and to hold undersigned harmless for any damages resulting from the existence of underground utilities or structures not reported to the undersigned, not indicated on the public records examined, located at variance with that reported or shown on records examined.

The contractor is required to take due precautionary measures to protect the utilities or structures shown and any other utilities or structures found at the site. It shall be the Contractor's responsibility to notify the owners of the utilities or structures concerned before starting work.

W.C. Holzhauser
W.C. Holzhauser C.E. N° 10219

- NOTES:
- PROVIDE STAKES ON THE PROPERTY LINE OR PROPERTY LINES PRODUCED AT RIGHT ANGLES TO THE SEWER LINE AT THE CENTER LINE OF EACH MANHOLE.
 - NO REPRESENTATIVE OF THE COUNTY ENGINEER WILL SURVEY OR LAY OUT ANY PORTION OF THE WORK.
 - THE PRIVATE ENGINEER SHALL FURNISH THE COUNTY ENGINEER WITH GRADE SHEETS AND STATIONING FOR ALL HOUSE LATERALS AND Y BRANCHES AND SHALL PROVIDE STAKES FOR THEM AT THEIR PROPER LOCATIONS WITH STATIONING PLAINLY MARKED. ANY CHANGE IN LOCATION SHALL BE REQUESTED IN WRITING BY THE OWNER OR HIS REPRESENTATIVE.
 - THE PRIVATE ENGINEER SHALL FURNISH THE HOUSE LATERAL DEPTH AT THE PROPERTY LINE BELOW THE TOP OF CURB ELEVATION FOR EACH HOUSE LATERAL ON THE GRADE SHEET.
 - NO REVISIONS SHALL BE MADE IN THESE PLANS WITHOUT THE APPROVAL OF THE COUNTY ENGINEER.
 - USE STANDARD MANHOLE FRAMES AND COVERS, S-117.
 - USE 4" STRENGTH PIPE, ALL PIPE STANDARD DEPTH EXCEPT AS NOTED.
 - USE MECHANICAL COMPRESSION JOINTS FOR ALL V.C.P. JOINTS PER SPECS. SECS. 34 & 48 & 49.
 - RESURFACE ALL TRENCH WITHIN PAVED AREA TO MEET L.A. COUNTY ROAD DEPT. OR CALIF. STATE HIGHWAY REQUIREMENTS IN ACCORDANCE WITH PERMITS.
 - ENCASE FOUR FEET OF SEWER AT POINTS OF INTERFERENCE WITH POLES, CASE III, S-172.
 - HOUSE LATERALS TO BE CONSTRUCTED WITH INTENTS AT PROPERTY LINE 6 FEET BELOW CURB GRADE.
 - MANHOLES SHALL BE BRICK SEWER STRUCTURES PER S-A-104 PRECAST CONCRETE MANHOLES PER S-A-125 OR S-A-172 MAY BE USED AS AN ALTERNATE IN LOCATIONS APPROVED BY THE COUNTY ENGINEER.
 - FOR ALLOWABLE LEAKAGE TEST USE FORMULA NO. 2, SPECS. SEC. 84.
 - MANHOLE TOPS IN UNIMPROVED RIGHTS-OF-WAY TO BE SIX INCHES ABOVE FINISHED GRADE.
 - THE CONTRACTOR SHALL NOTIFY THE CONSTRUCTION DIVISION BY TELEPHONE, MADISON 9-4141, EXT 6254 AT LEAST TWENTY-FOUR HOURS BEFORE STARTING ANY WORK UNDER THIS CONTRACT.
 - STANDARD SPECIFICATIONS DATED MAY 25, 1962 APPLY IN CONSTRUCTION OF THIS PROJECT.
 - Soils in filled ground:
 - No construction will be permitted in filled areas unless acceptable certification is submitted to the satisfaction of the county engineer's Dept. that relative compaction is greater than 88%.
 - If compaction is less than 88%, the soils must be crushed as shown on plans per S-a-118, or have a special base course per S-a-173, Case III. Special manhole bases must be installed per S-a-183 as indicated on the plans.
 - If compaction is greater than 80% neither grading nor special manhole bases will be required.
 - If during the course of construction it is determined that there is less than 88% compaction of cover over the top of a main line or house lateral R.C.P. cover which is not indicated on the plans, the cover shall be encased per S-a-173, Case III, unless otherwise approved by the County Engineer.
 - All state and local trench safety orders will be rigidly enforced.

NO CONNECTIONS FOR THE DISPOSAL OF INDUSTRIAL WASTES SHALL BE MADE TO SEWERS SHOWN ON THESE DRAWINGS WITHOUT WRITTEN PERMISSION FROM THE CHIEF ENGINEER AND GENERAL MANAGER OF THE COUNTY SANITATION DISTRICTS.

ISSUE NO PERMITS UNTIL P.C. 6101 & P.C. 6295 ARE ACCEPTED.

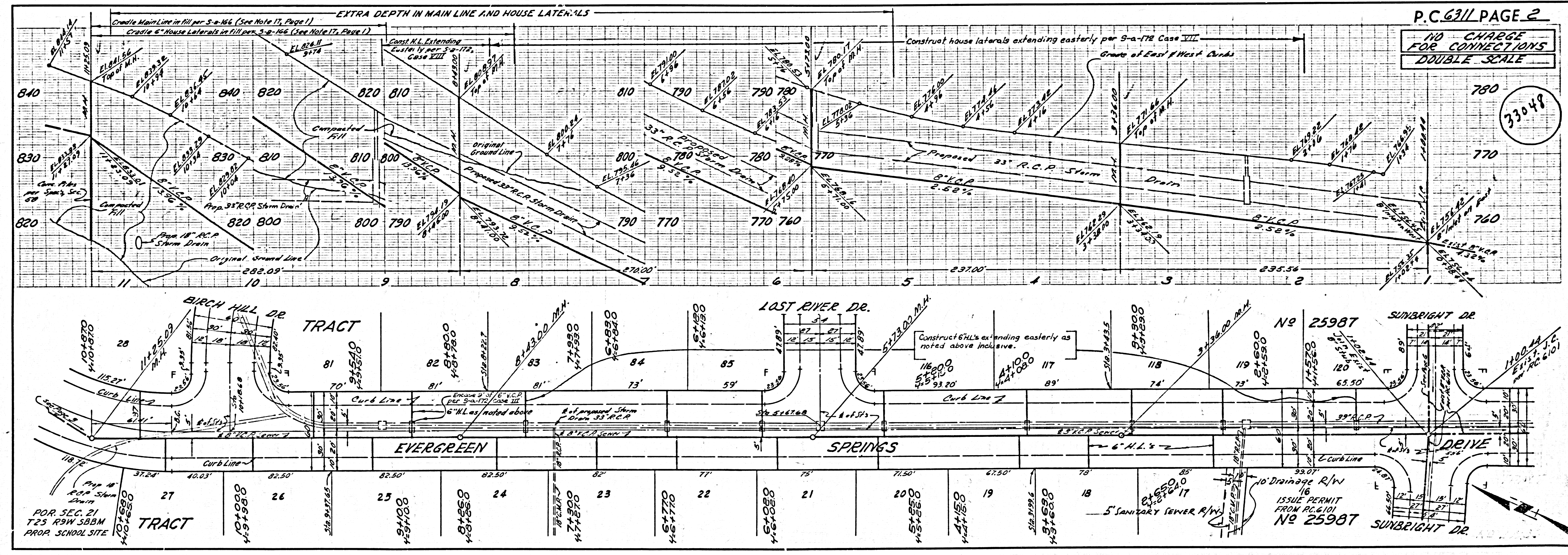
NOTE:
GRADES TO WHICH THIS IMPROVEMENT IS TO BE CONSTRUCTED ARE SHOWN ON PLANS AND PROFILES. GRADE POINTS FOR TOP OF CURBS, CENTER LINE OF STREETS, OR CENTER LINE OF ALLEYS ARE SHOWN BY CIRCLES ON PROFILES. AT ALL POINTS BETWEEN DESIGNATED POINTS THE GRADE SHALL BE ESTABLISHED SO AS TO CONFORM TO A STRAIGHT LINE DRAWN BETWEEN SAID DESIGNATED POINTS.
ELEVATIONS ARE IN FEET ABOVE U.S.C. & G.S. SEA LEVEL DATUM OF 1929.
THIS DRAWING AND THE DATA HEREON ARE HEREBY MADE A PART OF THE SPECIFICATIONS.
WORK SHALL BE CONSTRUCTED ACCORDING TO SPECIFICATIONS ON FILE IN THE OFFICE OF THE COUNTY ENGINEER AND SHALL BE PROSECUTED ONLY IN THE PRESENCE OF THE COUNTY ENGINEER.
BEFORE WORK CAN BE STARTED, THE CONTRACTOR MUST OBTAIN A PERMIT TO EXCAVATE IN COUNTY STREETS FROM THE L.A. COUNTY ROAD DEPT. DISTRICT OFFICE NO. 1 AND PAY A FEE TO THE COUNTY ENGINEER, ROOM 3104, COUNTY ENGR. BLDG., 108 N. 9th ST. SUFFICIENT TO COVER THE COST OF CONSTRUCTION INSPECTION AND RECORD PLANS.
APPROVAL OF THIS PLAN BY THE COUNTY OF LOS ANGELES DOES NOT CONSTITUTE A REPRESENTATION AS TO THE ACCURACY OF THE LOCATION OF OR THE EXISTENCE OR NON-EXISTENCE OF ANY UNDERGROUND UTILITY PIPE, OR STRUCTURE WITHIN THE LIMITS OF THIS PROJECT. THIS NOTE APPLIES TO ALL PAGES.
IF WORK IS TO BE DONE IN A STATE HIGHWAY, A PERMIT MUST BE OBTAINED FROM THE STATE OF CALIFORNIA, DIVISION OF HIGHWAYS, 120 SOUTH SPRING STREET.

COUNTY OF LOS ANGELES, CALIFORNIA

APPROVED, JOHN A. LAMMIE, COUNTY ENGINEER APPROVED, J.D. PARTHWARTSCHIEF, ENGINEER
D. SAN. DIST. NO. 21

BY *Robert E. Kline* ASST. SANITATION ENGINEER BY *J. D. Partwhartschief* OFFICE ENGINEER
CHECKED BY *Henry Lee* 10-22-62
OFFICE OF COUNTY ENGINEER, R.O. C. E. NO. 12,643

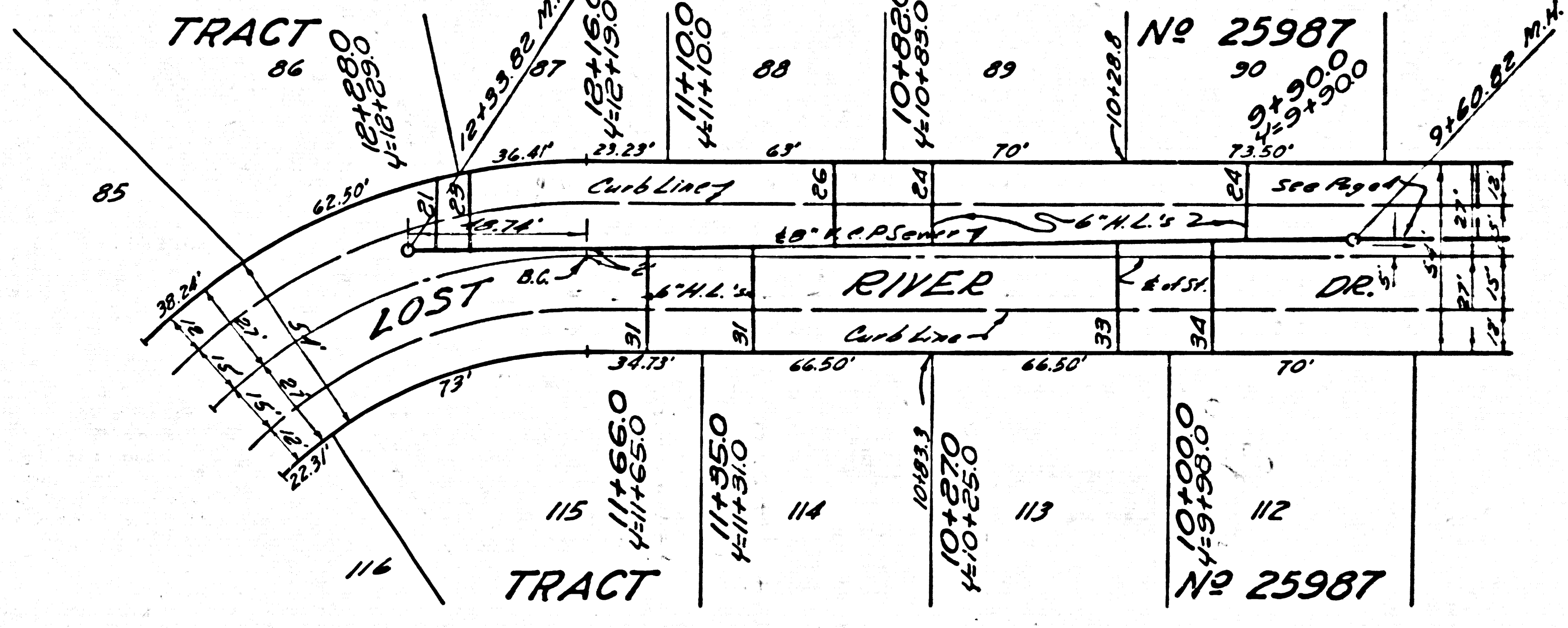
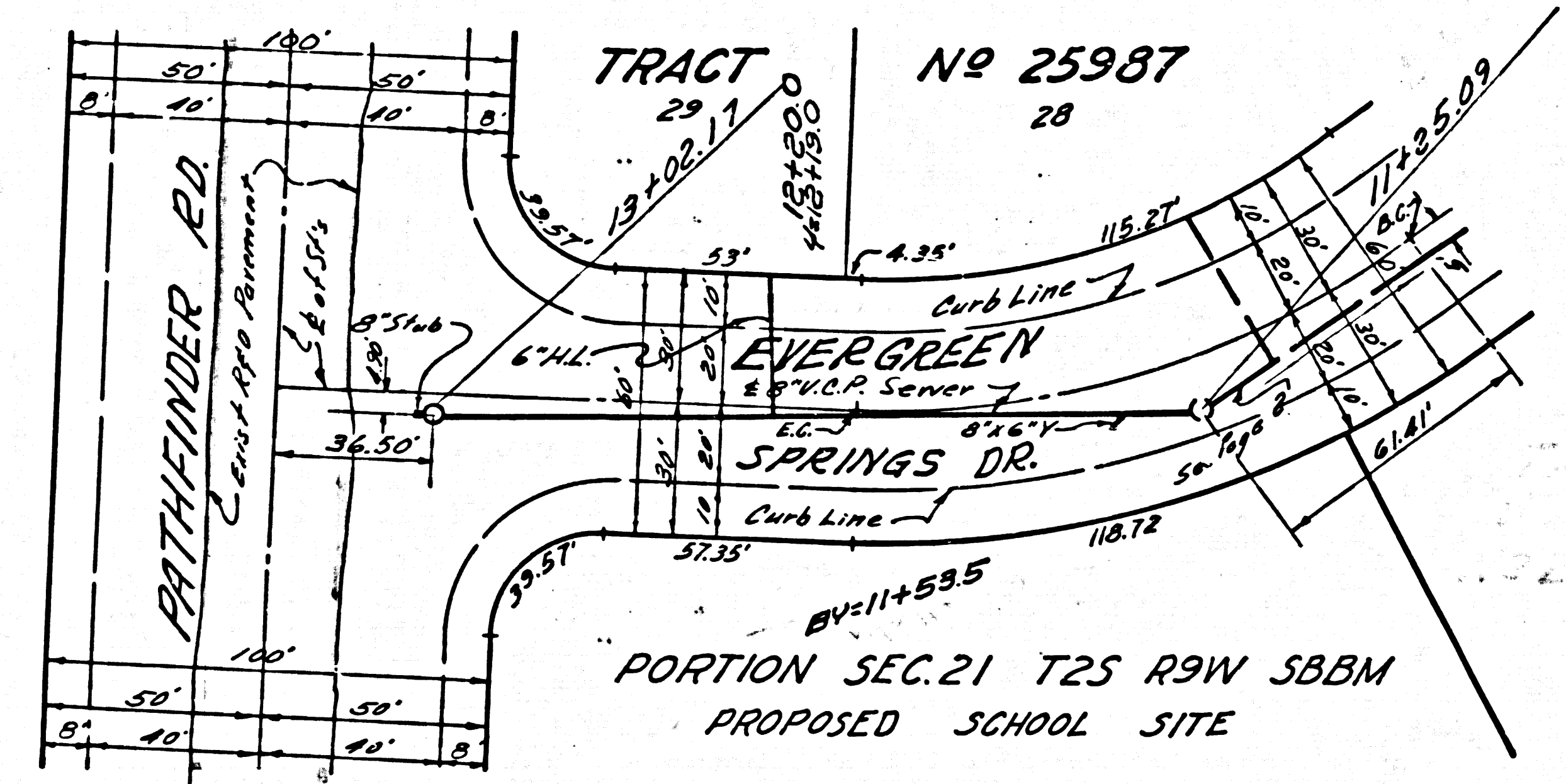
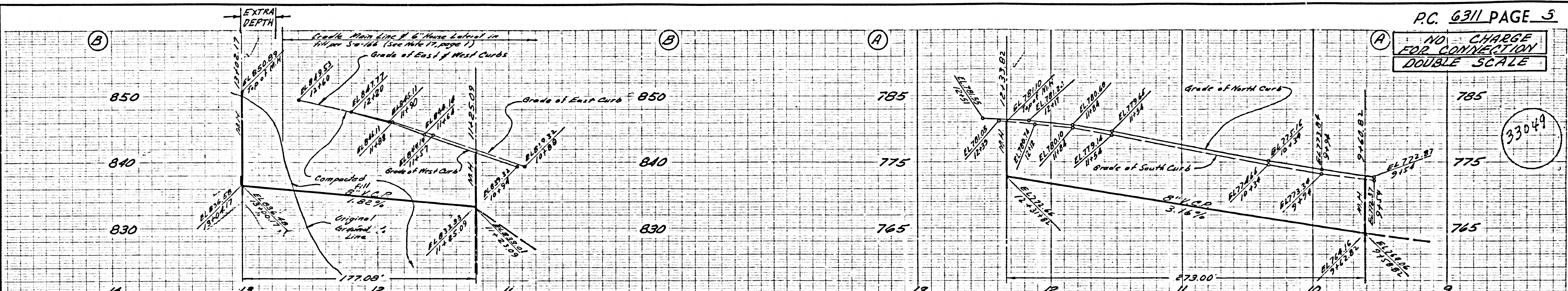
SUBMITTED: *B.T. Norling* R.E. N° 11636 10-18-62
SAN DIMAS REGIONAL OFFICE



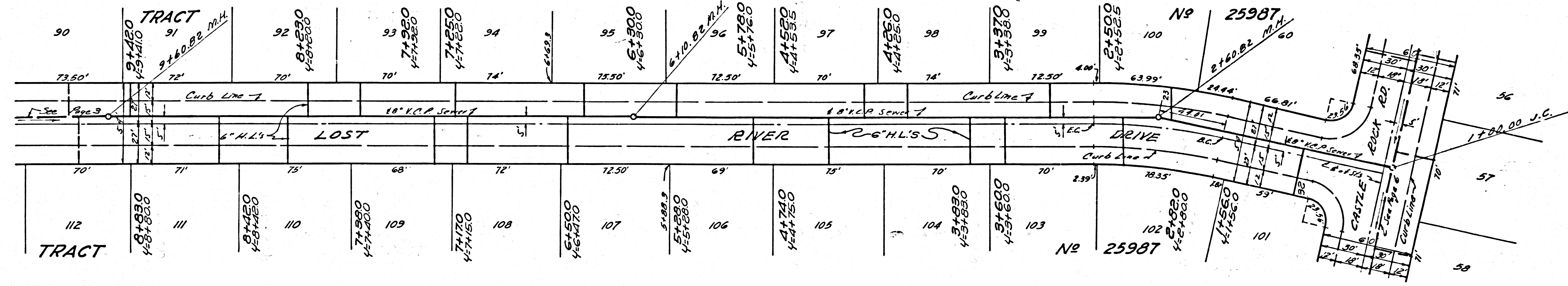
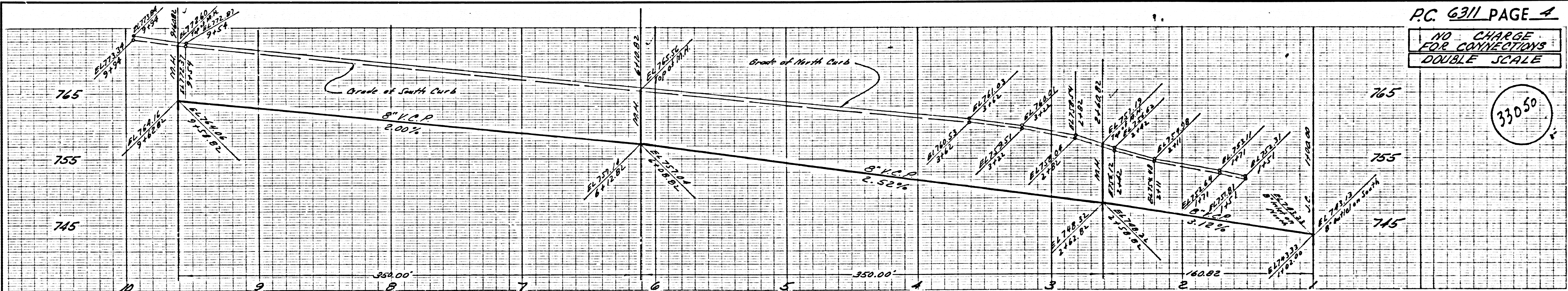
P.C. 6311 PAGE 2
NO CHARGE FOR CONNECTIONS
DOUBLE SCALE

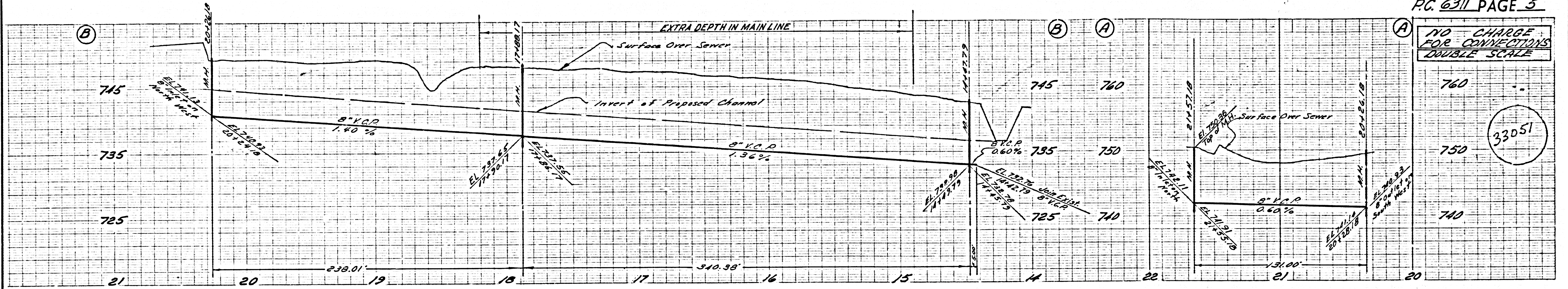
33048

NO CHARGE FOR CONNECTION DOUBLE SCALE



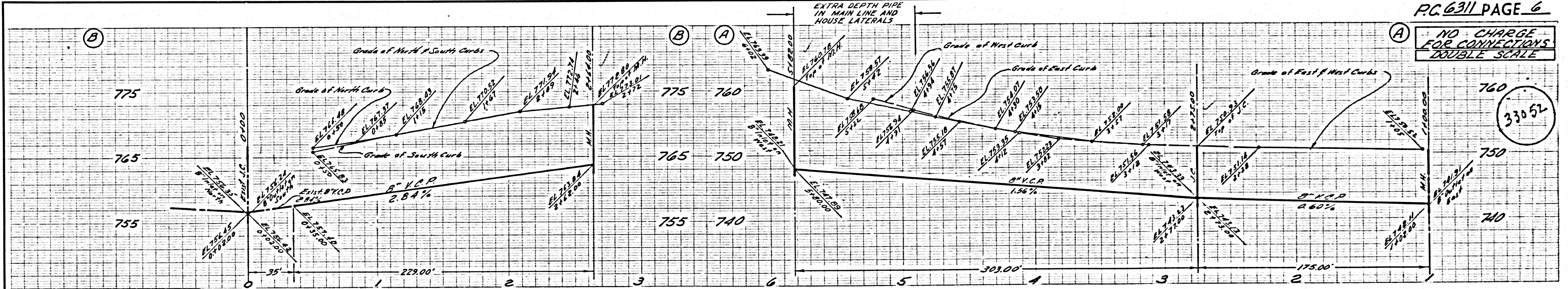
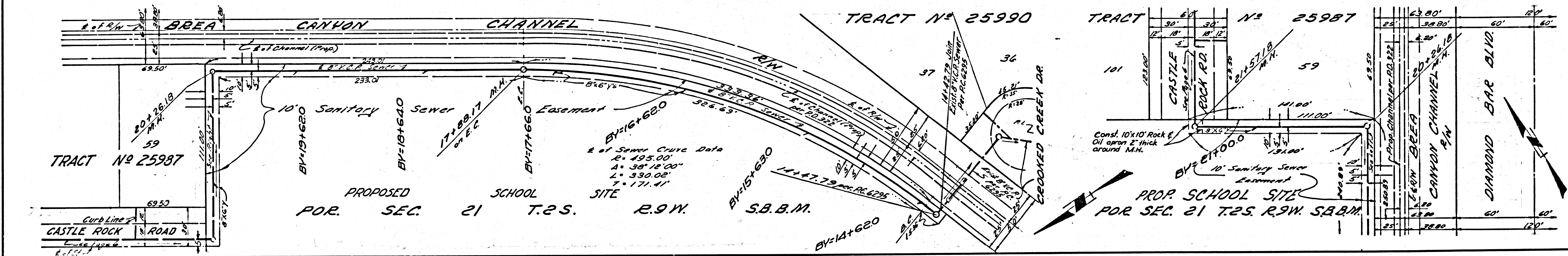
NO CHARGE FOR CONNECTIONS DOUBLE SCALE





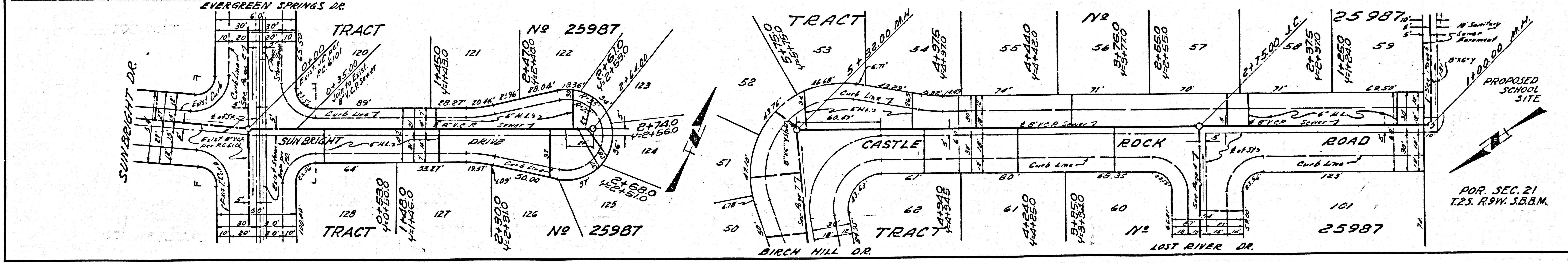
NO CHARGE FOR CONNECTIONS DOUBLE SCALE

33051



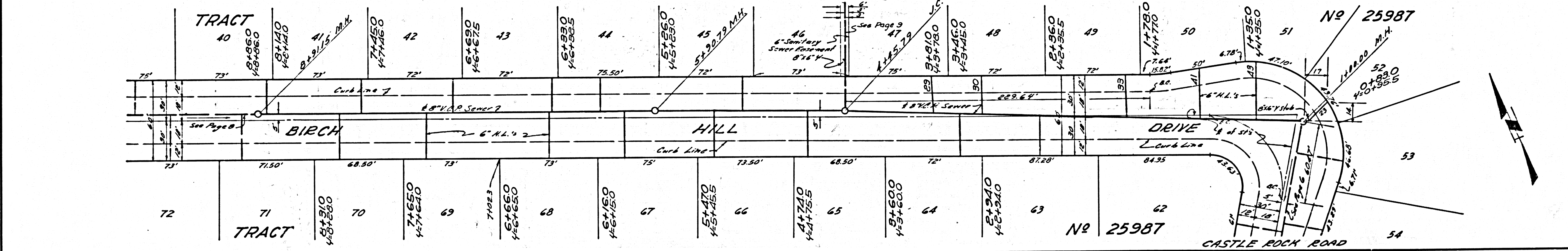
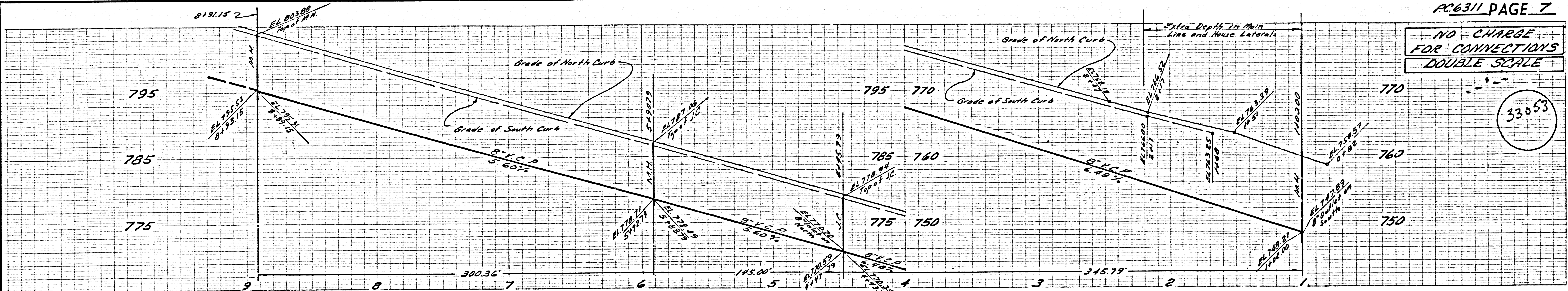
NO CHARGE FOR CONNECTIONS DOUBLE SCALE

33052



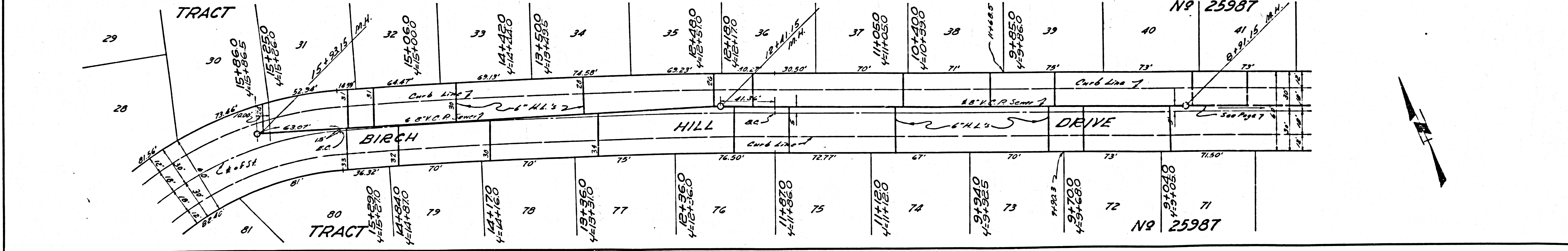
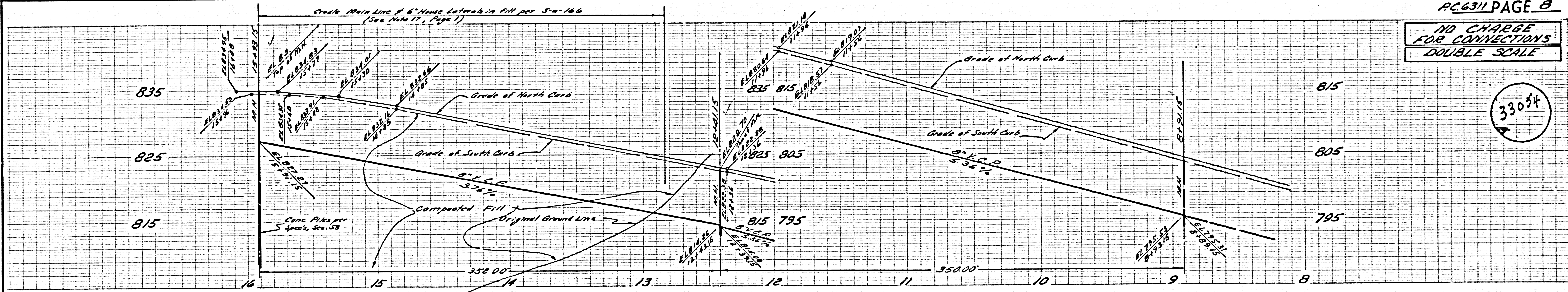
NO CHARGE FOR CONNECTIONS DOUBLE SCALE

33053



NO CHARGE FOR CONNECTIONS DOUBLE SCALE

33054



NO CHARGE
FOR CONNECTIONS
DOUBLE SCALE

38855

