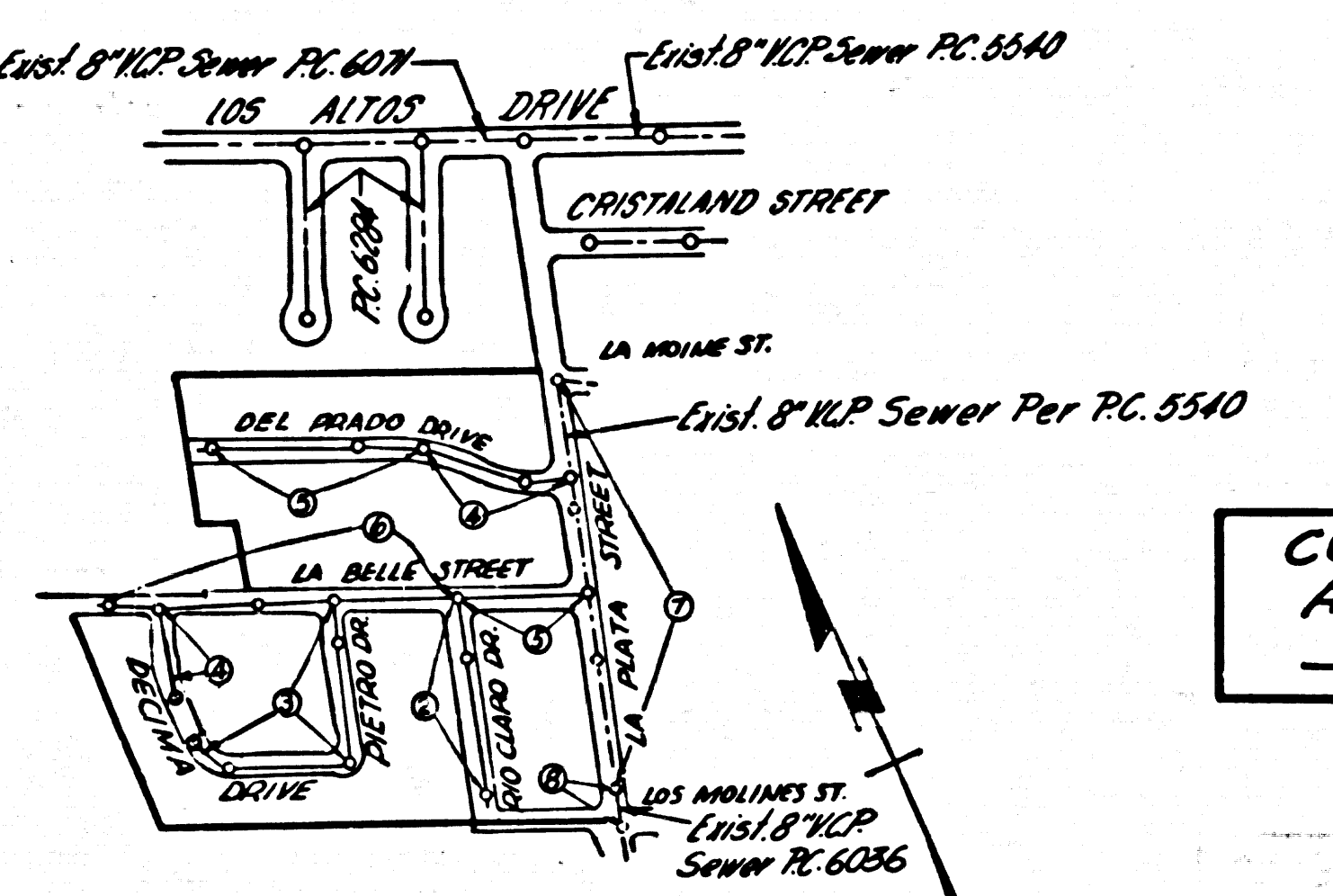


Bench Mark: 56-1611 ELEV 574.206
 Road Department B.M. tag 1' S. of end of conc.
 ret wall around house 13360 Los Altos Drive
 1.31' S & E of 600' E of La Cuesta Avenue
 WHITTIER QUAD. 1955 Datum

Add 0.17' to all elevation on this plan to equal
 56-1611-1955 Datum



INDEX MAP
 TRACT NO 26486
 SCALE: 1"=600'
 P.C. 6314

COLLECT CHARGES
 AS INDICATED
S. Reyes

ENGINEER'S
 NOTICE TO CONTRACTOR

THE EXISTENCE OR LOCATION OF ANY UNDERGROUND UTILITY PIPES OR LATERALS SHOWN ON THESE PLANS ARE OBTAINED BY A SEARCH OF THE RECORDS TO THE BEST OF OUR KNOWLEDGE. WHILE WE HAVE MADE SUCH SEARCHES TO THE BEST OF OUR KNOWLEDGE, THE CONTRACTOR IS REQUIRED TO TAKE PRECAUTIONARY MEASURES TO PROTECT THE UTILITY LINES SHOWN AND ANY OTHER LINES NOT OF RECORD OR NOT SHOWN ON THIS DRAWING.

NO CONNECTIONS FOR THE DISPOSAL OF INDUSTRIAL WASTES SHALL BE MADE TO SEWERS SHOWN ON THESE DRAWINGS WITHOUT WRITTEN PERMISSION FROM THE CHIEF ENGINEER AND GENERAL MANAGER OF THE COUNTY SANITATION DISTRICTS.

PUEENTE BLDG. DIST. NO. 2

- NOTES:
- PROVIDE STAKES ON THE PROPERTY LINE OR PROPERTY LINES PRODUCED AT RIGHT ANGLES TO THE SEWER LINE AT THE CENTER LINE OF EACH MANHOLE.
 - NO REPRESENTATIVE OF THE COUNTY ENGINEER WILL SURVEY OR LAYOUT ANY PORTION OF THE WORK.
 - THE OWNER OR HIS AUTHORIZED REPRESENTATIVE SHALL FURNISH THE COUNTY ENGINEER WITH GRADE SHEETS AND STATION FOR ALL HOUSE LATERALS AND Y BRANCHES AND SHALL PROVIDE STAKES FOR THEM AT THEIR PROPER LOCATIONS WITH STATIONING PLAINLY MARKED. ANY CHANGE IN LOCATION SHALL BE REQUESTED IN WRITING BY THE OWNER OR HIS REPRESENTATIVE.
 - NO REVISIONS SHALL BE MADE IN THESE PLANS WITHOUT THE APPROVAL OF THE COUNTY ENGINEER.
 - USE STANDARD MANHOLE FRAMES AND COVERS, S.A-117, EXCEPT AS NOTED.
 - USE EXTRA STRENGTH PIPE, ALL PIPE IS STANDARD DEPTH, EXCEPT AS NOTED.
 - USE CEMENT MORTAR OR MECHANICAL COMPRESSION JOINTS FOR ALL V.C.P. JOINTS IN HOUSE LATERALS PER SPECS. SEC. 36.14. USE MECHANICAL COMPRESSION JOINTS FOR ALL V.C.P. LATERALS PER SPECS. SEC. 36.24.
 - RESURFACE ALL TRENCH WITHIN PAVED AREA TO MEET L. A. COUNTY ROAD DEPT., OR CALIF. STATE HIGHWAY REQUIREMENTS IN ACCORDANCE WITH PERMITS.
 - ENCASE FOUR FEET OF SEWER AT POINTS OF INTERFERENCE WITH POLES, S.A-172 CASE III.
 - HOUSE LATERALS TO BE CONSTRUCTED WITH INVERTS AT PROPERTY LINE _____ FEET BELOW CURB GRADE EXCEPT AS NOTED.
 - ALL STRUCTURES SHALL BE BRICK SEWER STRUCTURES, S.A.104, PRECAST REINFORCED CONCRETE MANHOLES PER S.A. 125 OR S.A.123 MAY BE USED AS AN ALTERNATE TO LOCATIONS APPROVED BY THE COUNTY ENGINEER.
 - FOR ALLOWABLE LEAKAGE TEST USE FORMULA NO. _____ SPECS. SEC. _____.
 - MANHOLE TOPS IN UNIMPROVED RIGHTS-OF-WAY TO BE 6" ABOVE FINISHED GRADE.
 - STANDARD SPECIFICATIONS DATED MAY 25, 1962 APPLY IN THE CONSTRUCTION OF THIS PROJECT.
 - THE PRIVATE ENGINEER IS TO FURNISH THE HOUSE LATERAL DEPTH AT THE PROPERTY LINE BELOW THE TOP OF CURB ELEVATION FOR EACH HOUSE LATERAL ON THE GRADE SHEET.
 - THE CONTRACTOR SHALL NOTIFY THE CONSTRUCTION DIVISION BY TELEPHONE MADISON 9-4747 EXT. 8151 AT LEAST 24 HOURS BEFORE STARTING ANY WORK UNDER THIS CONTRACT.
 - USE MECHANICAL COMPRESSION JOINTS FOR ALL V.C.P. JOINTS IN HOUSE LATERALS PER SPECS. SEC. 36.14.
 - ALL STATE AND LOCAL TRENCH SAFETY ORDERS WILL BE RIGIDLY ENFORCED.

ENGINEERING SERVICE CORPORATION
 1127 W. WASHINGTON BLVD.
 LOS ANGELES 15, CALIF. RI. 9-7281

REVISIONS		TRACED BY: <i>E.S.</i>
		DES'G'D BY: <i>H.S.</i>
		CK'D BY: _____
		SUBMITTED: _____
SUB STRUCTURES OK'D		
W. O. NO.	DWG. NO.	DATE
6487-15		SEPT, 1962

TRACT NO. 26486
 PRIVATE CONTRACT NO. 6314
 W.S.37

4 SHEETS; 8 PAGES
 SCALE: VERT. 1"=4' HORIZ. 1"=40' SEPTEMBER, 1962

PREPARED IN THE OFFICES OF
 ENGINEERING SERVICE CORPORATION

By: *E.F. Young*
 REG. C. E. NO. 3692

FOR LEGEND SEE PLAN NO. S-A-64

NOTE:
 GRADES TO WHICH THIS IMPROVEMENT IS TO BE CONSTRUCTED ARE SHOWN ON PLANS AND PROFILES. GRADE POINTS FOR TOP OF CURBS, CENTER LINE OF STREETS, OR CENTER LINE OF ALLEYS ARE SHOWN BY CIRCLES ON PROFILES. AT ALL POINTS BETWEEN DESIGNATED POINTS THE GRADE SHALL BE ESTABLISHED SO AS TO CONFORM TO A STRAIGHT LINE DRAWN BETWEEN SAID DESIGNATED POINTS.
 ELEVATIONS ARE IN FEET ABOVE U.S.C. & G.S. SEA LEVEL DATUM OF 1929.
 THIS DRAWING AND THE DATA HEREON ARE HEREBY MADE A PART OF THE SPECIFICATIONS.
 WORK SHALL BE CONSTRUCTED ACCORDING TO SPECIFICATIONS ON FILE IN THE OFFICE OF THE COUNTY ENGINEER AND SHALL BE PROSECUTED ONLY IN THE PRESENCE OF THE COUNTY ENGINEER.
 BEFORE WORK CAN BE STARTED, THE CONTRACTOR MUST OBTAIN A PERMIT TO EXCAVATE IN COUNTY STREETS FROM THE L. A. COUNTY ROAD DEPT., DISTRICT OFFICE NO. 7 AND FROM A FEW FEET THE COUNTY ENGINEER, ROOM 330 COUNTY FARM BUILDING, 408 W. 24TH STREET, SUITE 100 TO COVER THE COSTS OF CONSTRUCTION INSPECTION AND RECORD PLANS.
 APPROVAL OF THIS PLAN BY THE COUNTY OF LOS ANGELES DOES NOT CONSTITUTE A REPRESENTATION AS TO THE ACCURACY OF THE LOCATION OF OR THE EXISTENCE OR NON-EXISTENCE OF ANY UNDERGROUND UTILITY PIPE, OR STRUCTURE WITHIN THE LIMITS OF THIS PROJECT. THIS NOTE APPLIES TO ALL PAGES.
 IF WORK IS TO BE DONE IN A STATE HIGHWAY, A PERMIT MUST BE OBTAINED FROM THE STATE OF CALIFORNIA, DIVISION OF HIGHWAYS, 126 SOUTH SPRING STREET.

COUNTY OF LOS ANGELES, CALIFORNIA

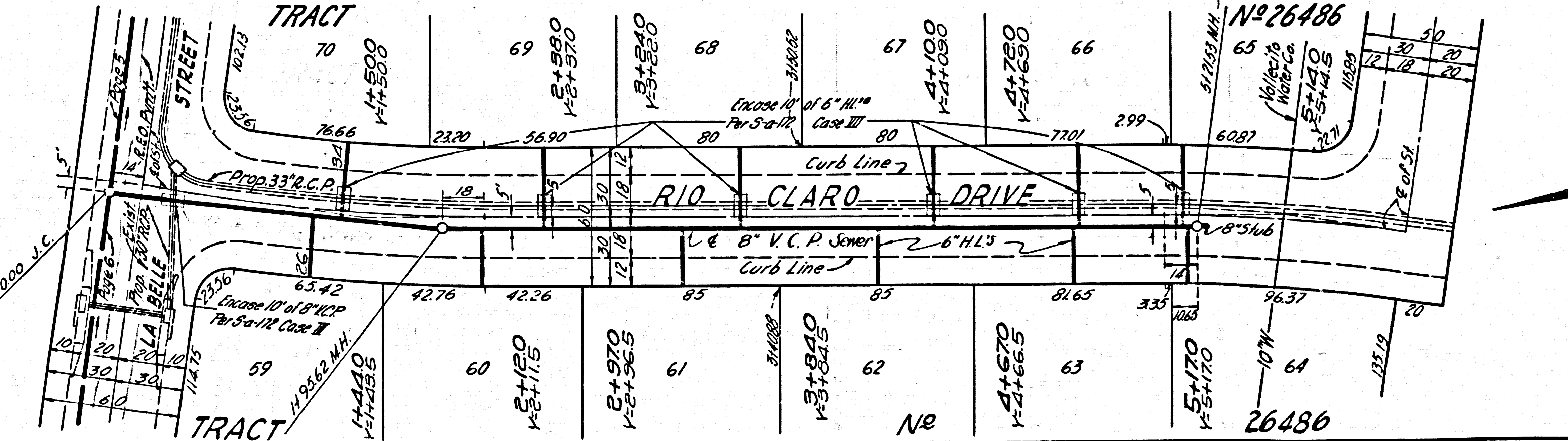
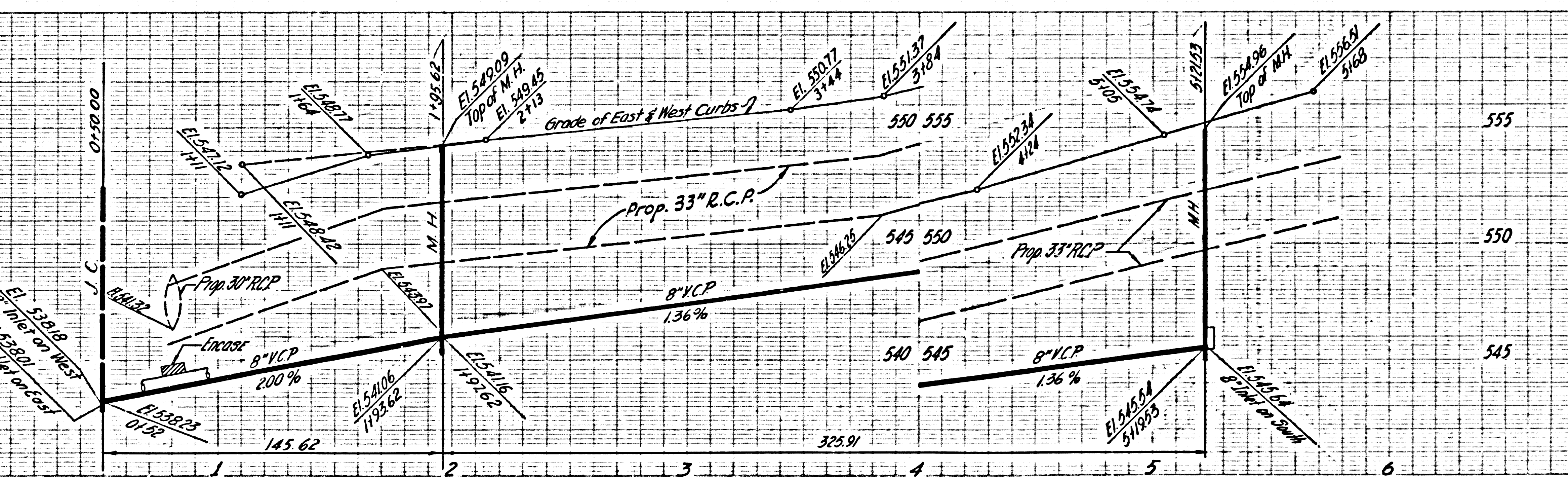
APPROVED, JOHN A. LAMMIE, COUNTY ENGINEER APPROVED, J. D. BARKHART, CHIEF ENGINEER

By: *Russell* ASST. SANITATION ENGINEER By: *J. Barkhart* OFFICE ENGINEER

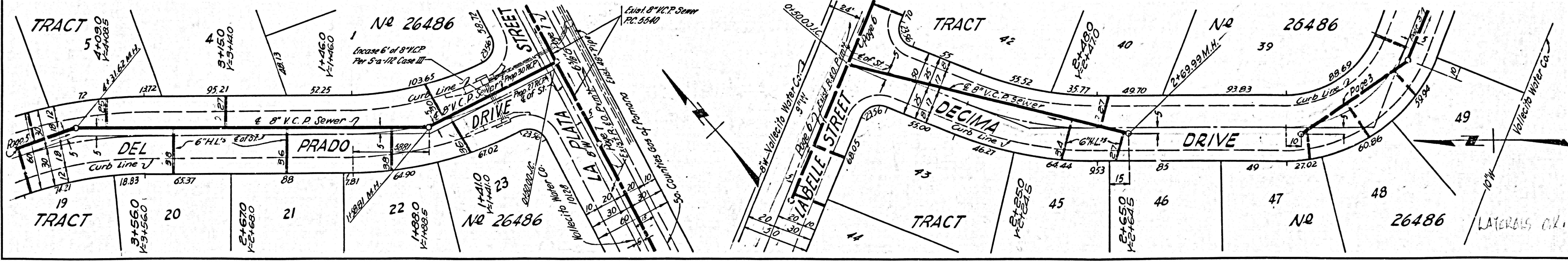
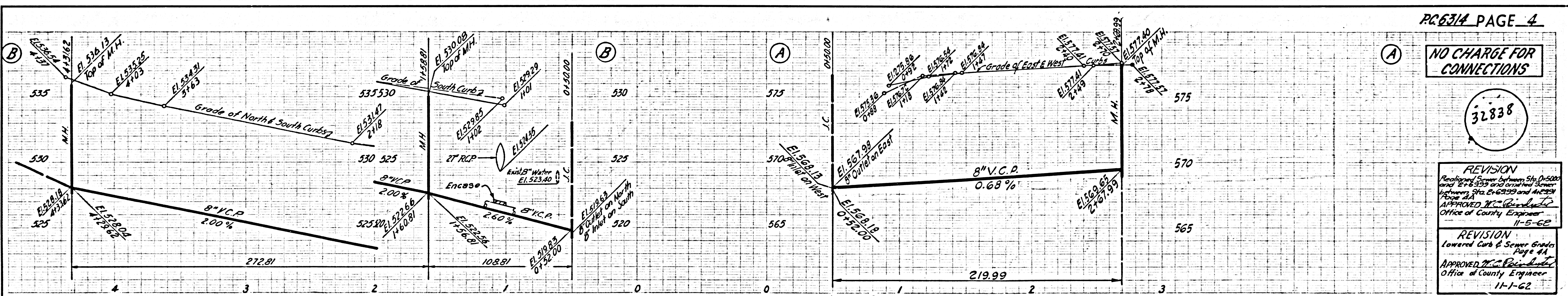
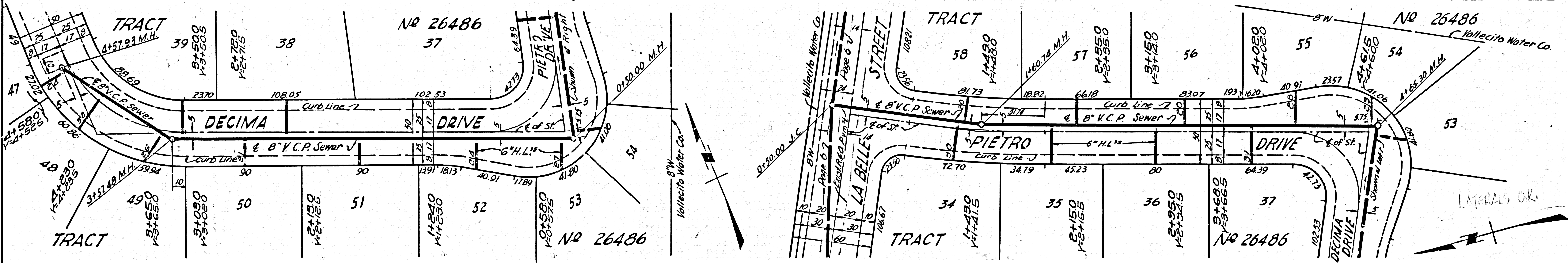
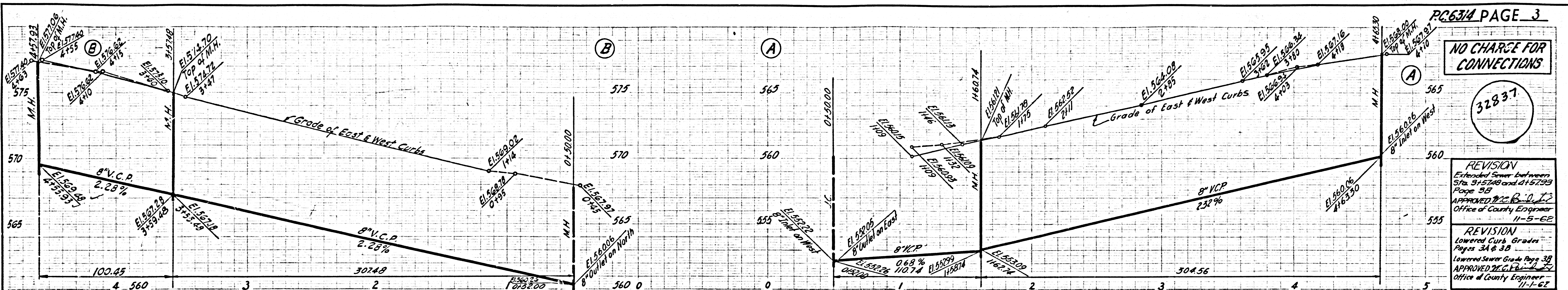
CHECKED BY: *Sk. Dudas* 10-1-62 OFFICE OF COUNTY ENGINEER, REG. C. E. NO. 2486

SUBMITTED *W.C. Prindler* 7-28-62 500 Dimes Regional Engineer

NO CHARGE FOR CONNECTIONS

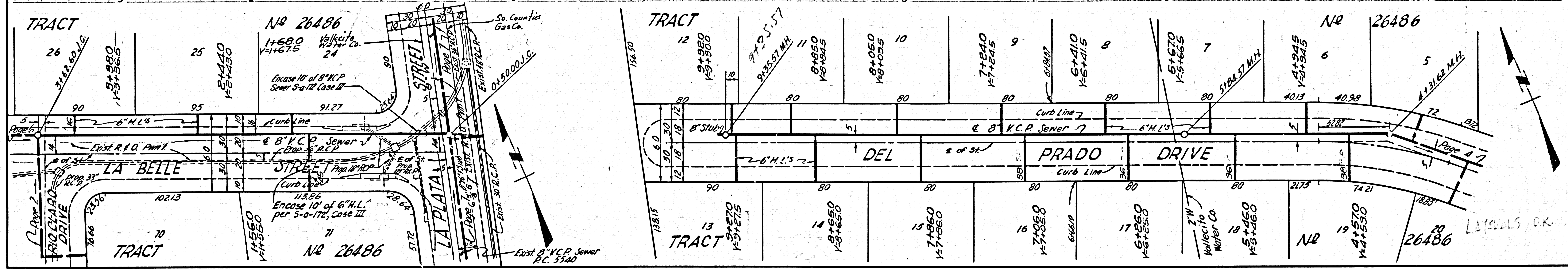
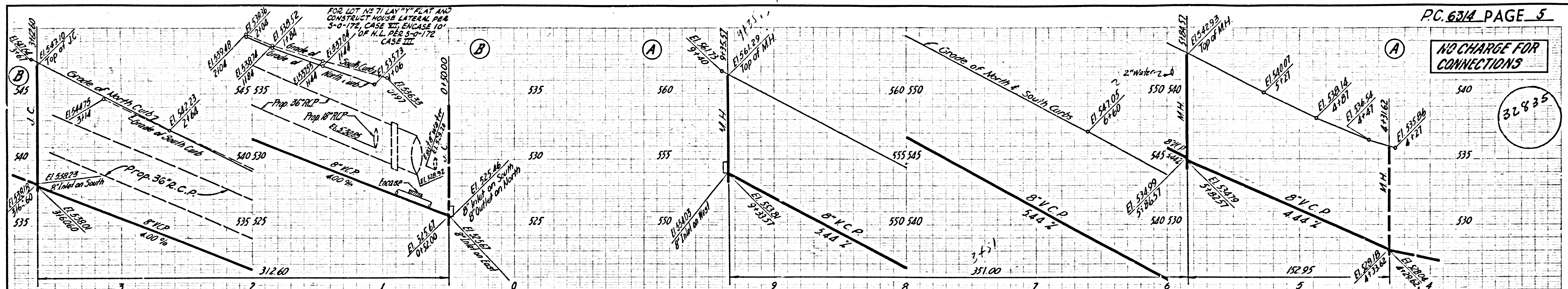


LATERALS O.K.



NO CHARGE FOR CONNECTIONS

32835

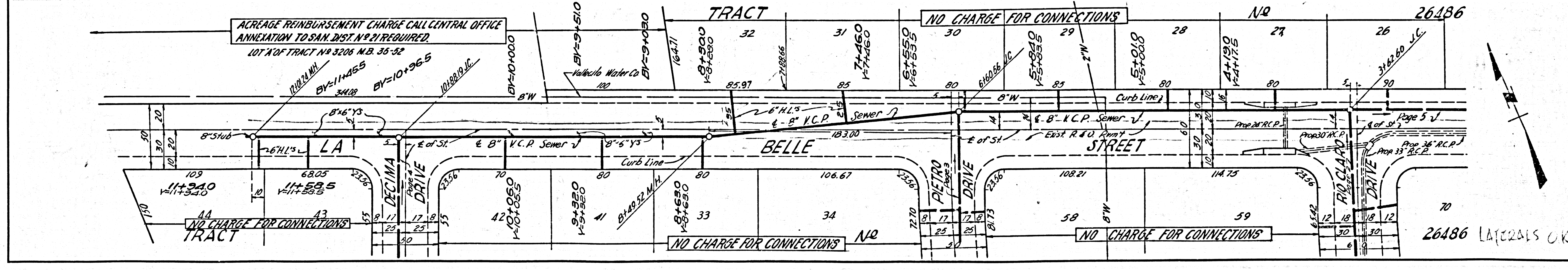
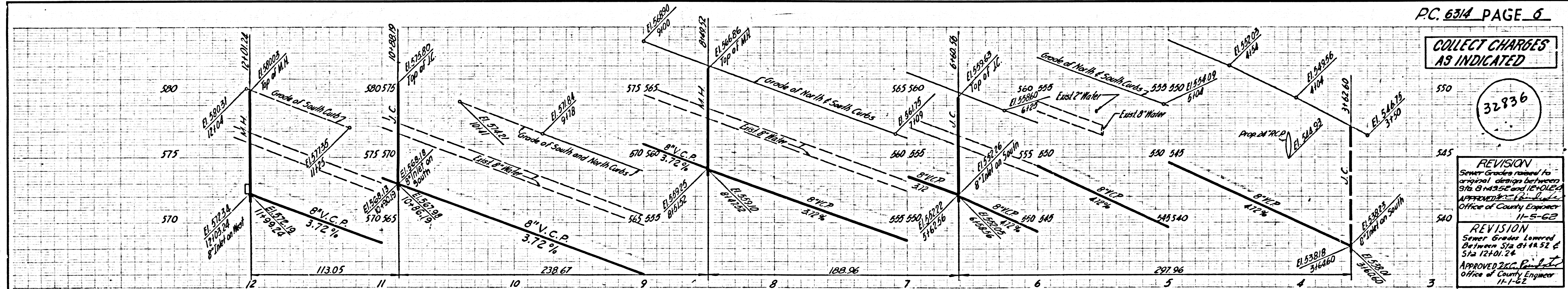


COLLECT CHARGES AS INDICATED

32836

REVISION
Sewer Grades revised to original design between 9th & 10th Sts. APPROVED: 11-5-62
Office of County Engineer

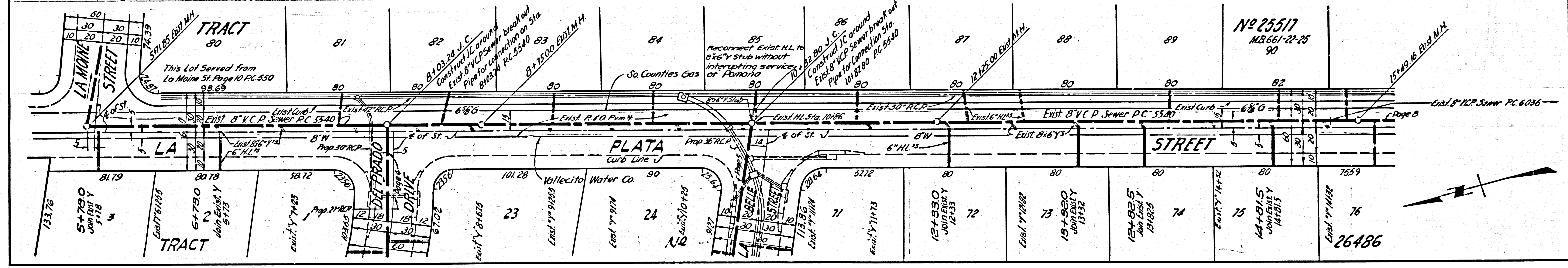
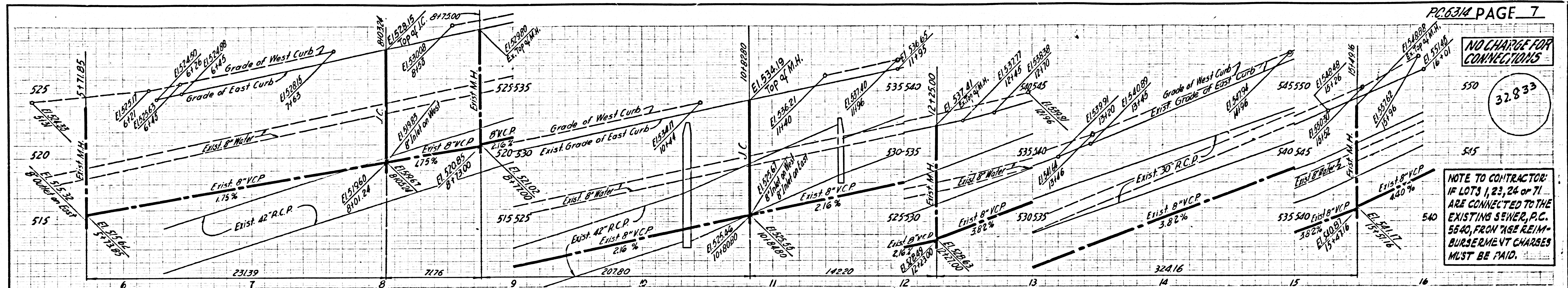
REVISION
Sewer Grades Lowered Between 5th & 11th Sts. APPROVED: 11-1-62
Office of County Engineer



NO CHARGE FOR CONNECTIONS

32833

NOTE TO CONTRACTOR:
IF LOTS 1, 2, 24 or 71 ARE CONNECTED TO THE EXISTING SEWER, P.C. 5540, FROM THE REIMBURSEMENT CHARGES MUST BE PAID.



NO CHARGE FOR CONNECTIONS

32834

