

LOMITA BLDG. DIST. NO. 12

PROFILE ALIGNMENT AND GRADE OF P.C. 6315

SANITARY SEWERS PAGE 1

TO BE CONSTRUCTED IN J.N. 0358.77

TRACT No 27164

PRIVATE CONTRACT NO. 6315

W.S. 23

2 SHEETS; 4 PAGES

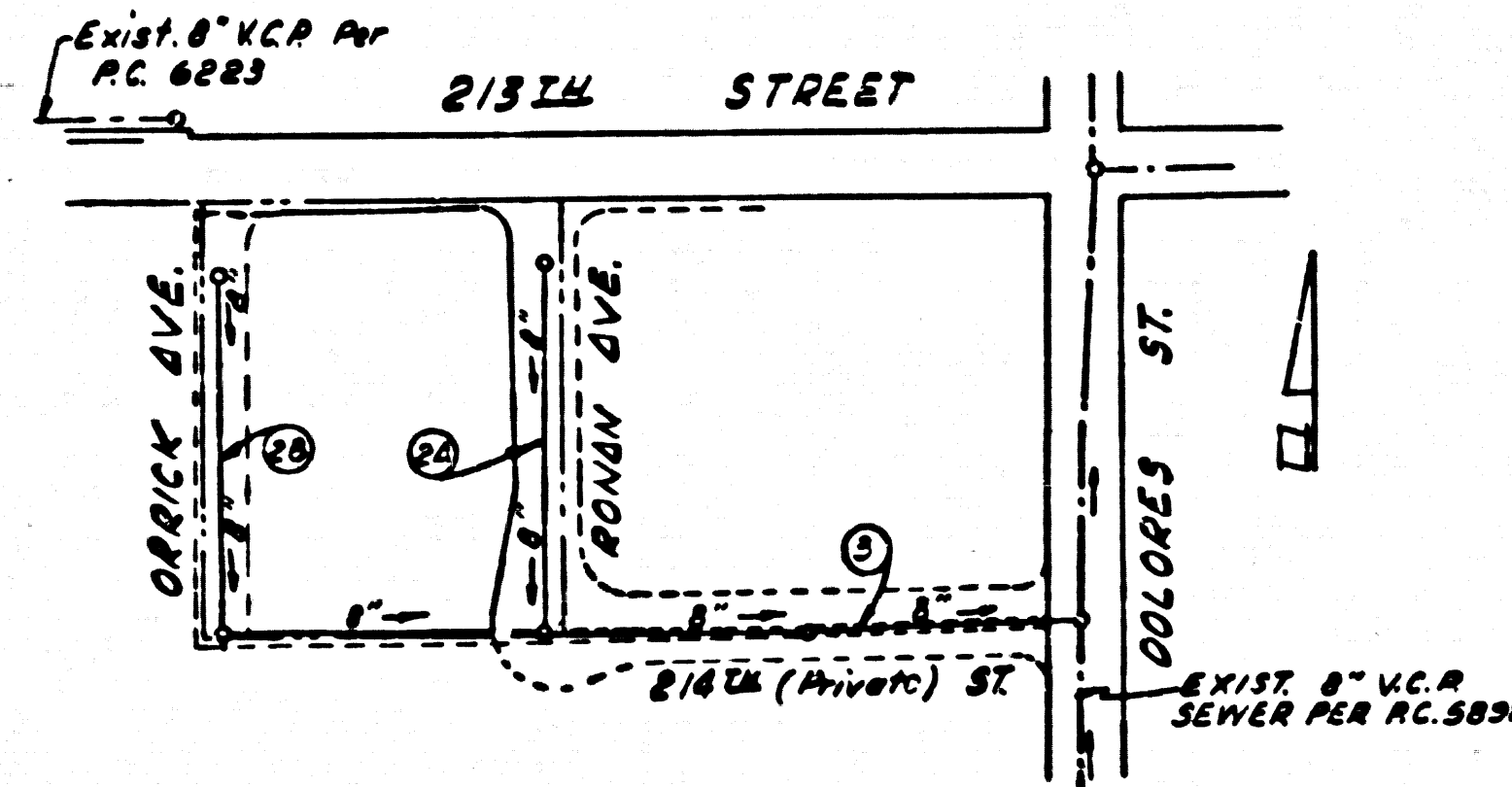
SCALE: VERT. 1"=4' AUGUST 1, 1962

PREPARED IN THE OFFICES OF LANCO ENGINEERING

By: Clark M. Leonard
CLARK M. LEONARD REG. C. E. NO. 12167

FOR LEGEND SEE PLAN NO. S-A-64

33360



INDEX MAP
TRACT No 27164
Scale: 1"=200'
P.C. 6315

BENCH MARK:
SY-3914
ELEV. = 88.079 1955 Adj.
GARDENA QUAD.
LEAD & TACK IN CONCRETE PAVEMENT
19' WEST OF & INTERSECTION EAST OF
213th STREET PRODUCED AND MAIN ST.

REVISIONS
Revised Lot Dimensions & Added
Vertical Curve Pages 3 & 4
Revised by Clark M. Leonard R.E. No. 12167
Approved by Ralph Schalk Date 4-20-62

COLLECT CHARGES
AS INDICATED

- NOTES:
- PROVIDE STAKES ON THE PROPERTY LINE OR PROPERTY LINES PRODUCED AT RIGHT ANGLES TO THE SEWER LINE AT THE CENTER LINE OF EACH MANHOLE.
 - NO REPRESENTATIVE OF THE COUNTY ENGINEER WILL SURVEY OR LAY OUT ANY PORTION OF THE WORK.
 - THE PRIVATE ENGINEER SHALL FURNISH THE COUNTY ENGINEER WITH GRADE SHEETS AND STATIONING FOR ALL HOUSE LATERALS AND Y BRANCHES FOR ALL PROVIDE STAKES FOR THEM AT THEIR PROPER LOCATIONS WITH STATIONING PLAINLY MARKED. ANY CHANGE IN ALIGNMENT SHALL BE REQUESTED IN WRITING BY THE PRIVATE ENGINEER. ALL HOUSE LATERALS SHALL BE CONSTRUCTED IN A STRAIGHT ALIGNMENT AT RIGHT ANGLES FROM THE MAIN LINE SEWER, EXCEPT AS SHOWN ON THE PLANS.
 - THE PRIVATE ENGINEER SHALL FURNISH THE HOUSE LATERAL DEPTH AT THE PROPERTY LINE BELOW THE TOP OF CURB ELEVATION FOR EACH HOUSE LATERAL ON THE GRADE SHEET.
 - NO REVISIONS SHALL BE MADE IN THESE PLANS WITHOUT THE APPROVAL OF THE COUNTY ENGINEER.
 - USE STANDARD MANHOLE FRAMES AND COVERS, S-112.
 - USE EXTRA STRENGTH PIPE. ALL PIPE IS STANDARD DEPTH EXCEPT AS NOTED.
 - USE MECHANICAL COMPRESSION JOINTS FOR ALL V.C.P. JOINTS PER SPEC'S, SECS. 34, 40 & 40.
 - RESURFACE ALL TRENCH WITHIN PAVED AREA TO MEET L.A. COUNTY ROAD DEPT. OR CALIF. STATE HIGHWAY REQUIREMENTS IN ACCORDANCE WITH PERMITS.
 - IF A POWER POLE WITHIN THREE FEET OF THE SEWER, THE SEWER SHALL BE ENCASED PER S-0-170, CASE III, TWO FEET ON EITHER SIDE FROM THE POLE'S CENTER LINE.
 - HOUSE LATERALS TO BE CONSTRUCTED WITH INVERTS AT PROPERTY LINE. 2' MIN. CURE GRADE.
 - MANHOLES SHALL BE BRICK SEWER STRUCTURES PER S-0-109. PRECAST CONCRETE MANHOLES PER S-0-135 OR S-0-173, MAY BE USED AS AN ALTERNATE IN LOCATIONS APPROVED BY THE COUNTY ENGINEER.
 - FOR ALLOWABLE LEAKAGE TEST USE FORMULA NO. 1 SPEC'S, SEC. 34.
 - MANHOLE TOPS IN UNIMPROVED RIGHTS-OF-WAY TO BE SIX INCHES ABOVE FINISHED GRADE.
 - THE CONTRACTOR SHALL NOTIFY THE CONSTRUCTION DIVISION BY TELEPHONE, MADISON 5-4747, EXT. 2853, AT LEAST TWENTY-FOUR HOURS BEFORE STARTING ANY WORK UNDER THIS CONTRACT.
 - SPECIFICATIONS DATED MAY 23, 1962, APPLY IN THE CONSTRUCTION OF THIS PROJECT.
 - ALL STATE AND LOCAL TRENCH SAFETY ORDERS WILL BE RIGIDLY ENFORCED.
 - WHENEVER DEPTH NOTED IS ENCOUNTERED DURING THE CONSTRUCTION OF THE SEWERS, THE V.C.P. JOINTS SHALL BE OF TIGHT COMPOUND PER SPEC'S, SEC. 33 & 40, OR MECHANICAL COMPRESSION JOINTS PER SPEC'S, SEC. 36.
 - IF DURING THE COURSE OF CONSTRUCTION IT IS DETERMINED THAT THERE IS LESS THAN FOUR FEET OF COVER OVER THE TOP OF A MAIN LINE OR HOUSE LATERAL V.C.P. SEWER WHICH IS NOT INDICATED ON THE PLANS, THE PIPE SHALL BE ENCASED PER S-0-170, CASE III, UNLESS OTHERWISE APPROVED BY THE COUNTY ENGINEER.

NOTICE TO CONTRACTOR
The existence and location of any underground utility pipes or structures shown on these plans are obtained by a search of the available records. To the best of my knowledge there are no existing utilities except as shown on these plans.
The contractor is required to take due precautionary measures to protect the utility lines shown and any other lines not of record or not shown on these plans.
Clark M. Leonard
Clark M. Leonard R.E. 12167

NO CONNECTIONS FOR THE DISPOSAL OF INDUSTRIAL WASTES SHALL BE MADE TO SEWERS SHOWN ON THESE DRAWINGS WITHOUT WRITTEN PERMISSION FROM THE CHIEF ENGINEER AND GENERAL MANAGER OF THE COUNTY SANITATION DISTRICTS.

NOTE:
GRADES TO WHICH THIS IMPROVEMENT IS TO BE CONSTRUCTED ARE SHOWN ON PLANS AND PROFILES. GRADE POINTS FOR TOP OF CURBS, CENTER LINE OF STREETS, OR CENTER LINE OF ALLEYS ARE SHOWN BY CIRCLES ON PROFILES. AT ALL POINTS BETWEEN DESIGNATED POINTS THE GRADE SHALL BE ESTABLISHED SO AS TO CONFORM TO A STRAIGHT LINE DRAWN BETWEEN SAID DESIGNATED POINTS.
ELEVATIONS ARE IN FEET ABOVE U.S.C. & G.S. SEA LEVEL DATUM OF 1929.
THIS DRAWING AND THE DATA HEREON ARE HEREBY MADE A PART OF THE SPECIFICATIONS.
WORK SHALL BE CONSTRUCTED ACCORDING TO SPECIFICATIONS ON FILE IN THE OFFICE OF THE COUNTY ENGINEER AND SHALL BE INSPECTED ONLY IN THE PRESENCE OF THE COUNTY ENGINEER.
BEFORE WORK CAN BE STARTED, THE CONTRACTOR MUST OBTAIN A PERMIT TO EXCAVATE IN COUNTY STREETS FROM THE L.A. COUNTY ROAD DEPT., DISTRICT OFFICE NO. 3, AND PAY A FEE TO THE COUNTY ENGINEER, ROOM 310 COUNTY ENGINEER BLDG. 400 W. 4th ST. SUFFICIENT TO COVER THE COST OF CONSTRUCTION INSPECTION AND RECORD PLANS.
APPROVAL OF THIS PLAN BY THE COUNTY OF LOS ANGELES DOES NOT CONSTITUTE A REPRESENTATION AS TO THE ACCURACY OF THE LOCATION OF OR THE EXISTENCE OR NON-EXISTENCE OF ANY UNDERGROUND UTILITY PIPE, OR STRUCTURE WITHIN THE LIMITS OF THIS PROJECT. THIS NOTE APPLIES TO ALL PAGES.
IF WORK IS TO BE DONE IN A STATE HIGHWAY, A PERMIT MUST BE OBTAINED FROM THE STATE OF CALIFORNIA, DIVISION OF HIGHWAYS, 120 SOUTH SPRING STREET.

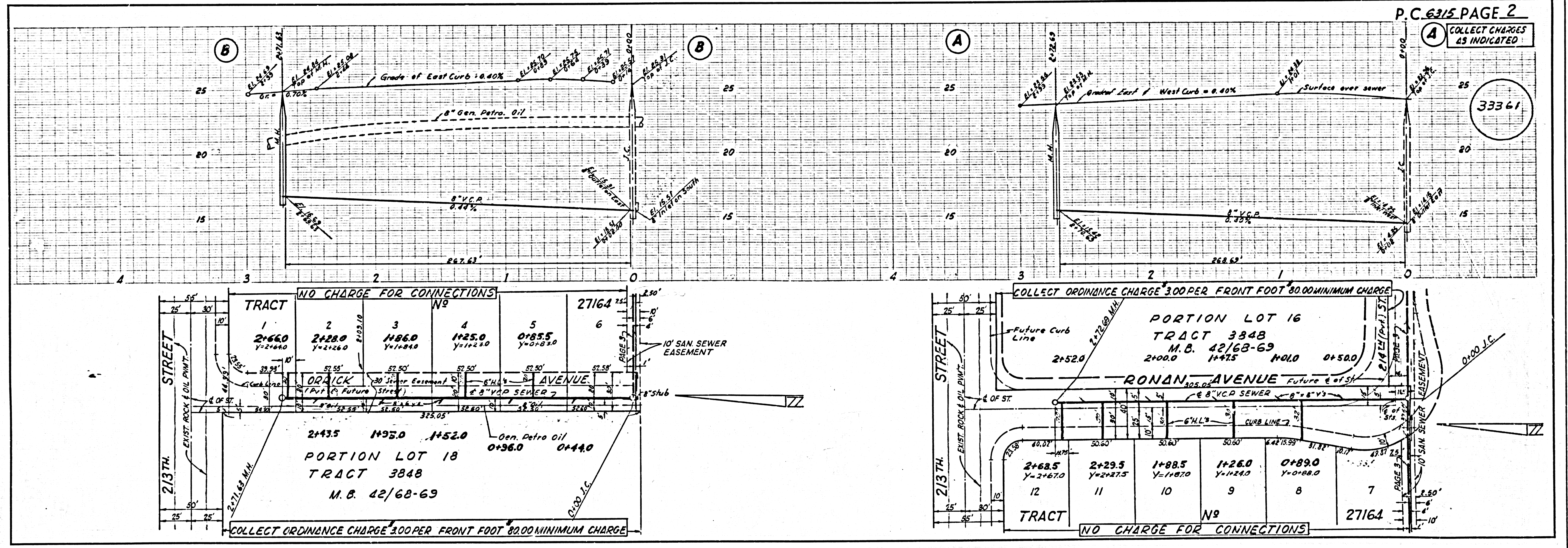
COUNTY OF LOS ANGELES, CALIFORNIA

APPROVED, JOHN A. LAMBIE, COUNTY ENGINEER APPROVED, J.D. PARKHURST, CHIEF ENGINEER

By: Ralph Schalk R.E. SANITATION ENGINEER By: Clark M. Leonard OFFICE ENGINEER

CHECKED BY: Clark M. Leonard 11-21-62
OFFICE OF COUNTY ENGINEER, REG. C. E. NO. 7496

SUBMITTED: Jack C. Lansing
PALOS VERDES-CENTINELA VALLEY REGIONAL ENGINEER

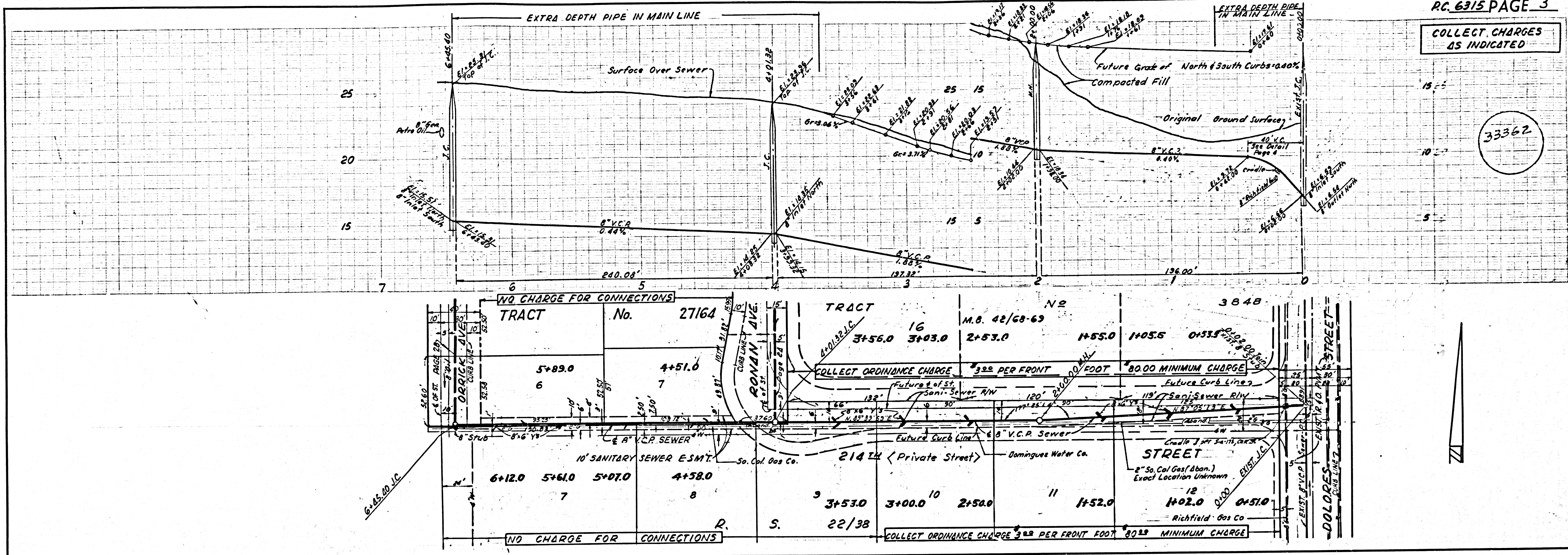


P.C. 6315 PAGE 2
COLLECT CHARGES AS INDICATED

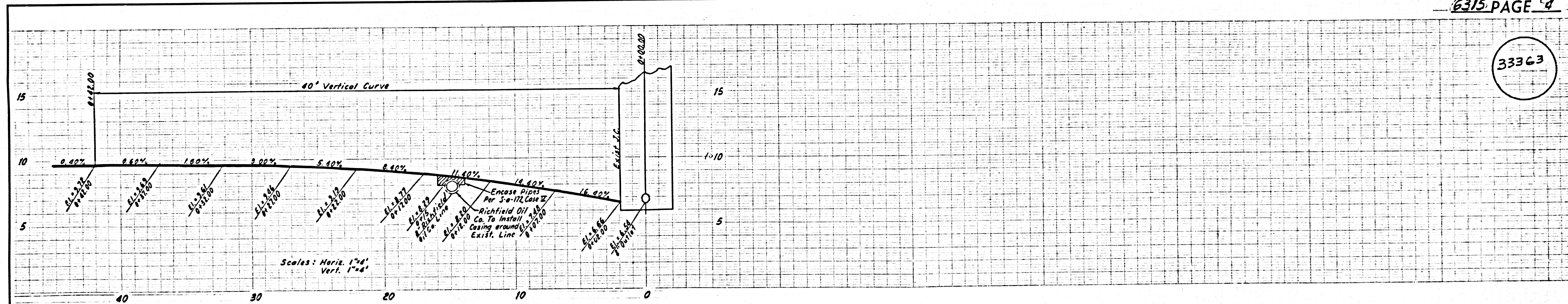
33361

COLLECT CHARGES AS INDICATED

33362



33363



DETAIL 214TH STREET
SEE PAGE N° 3