

TEMPLE CITY BLDG. DIST. NO. 5

PROFILE ALIGNMENT AND GRADE OF P.C. 6318

SANITARY SEWERS PAGE 1

TO BE CONSTRUCTED IN J.N. 0358.79

SANITARY SEWER R/W
NORTH OF WILDFLOWER ROAD
PRIVATE CONTRACT NO. 6318

W.S. 46 A-3

1 SHEETS; 2 PAGES

SCALE: VERT. 1"=6' HORIZ. 1"=40'

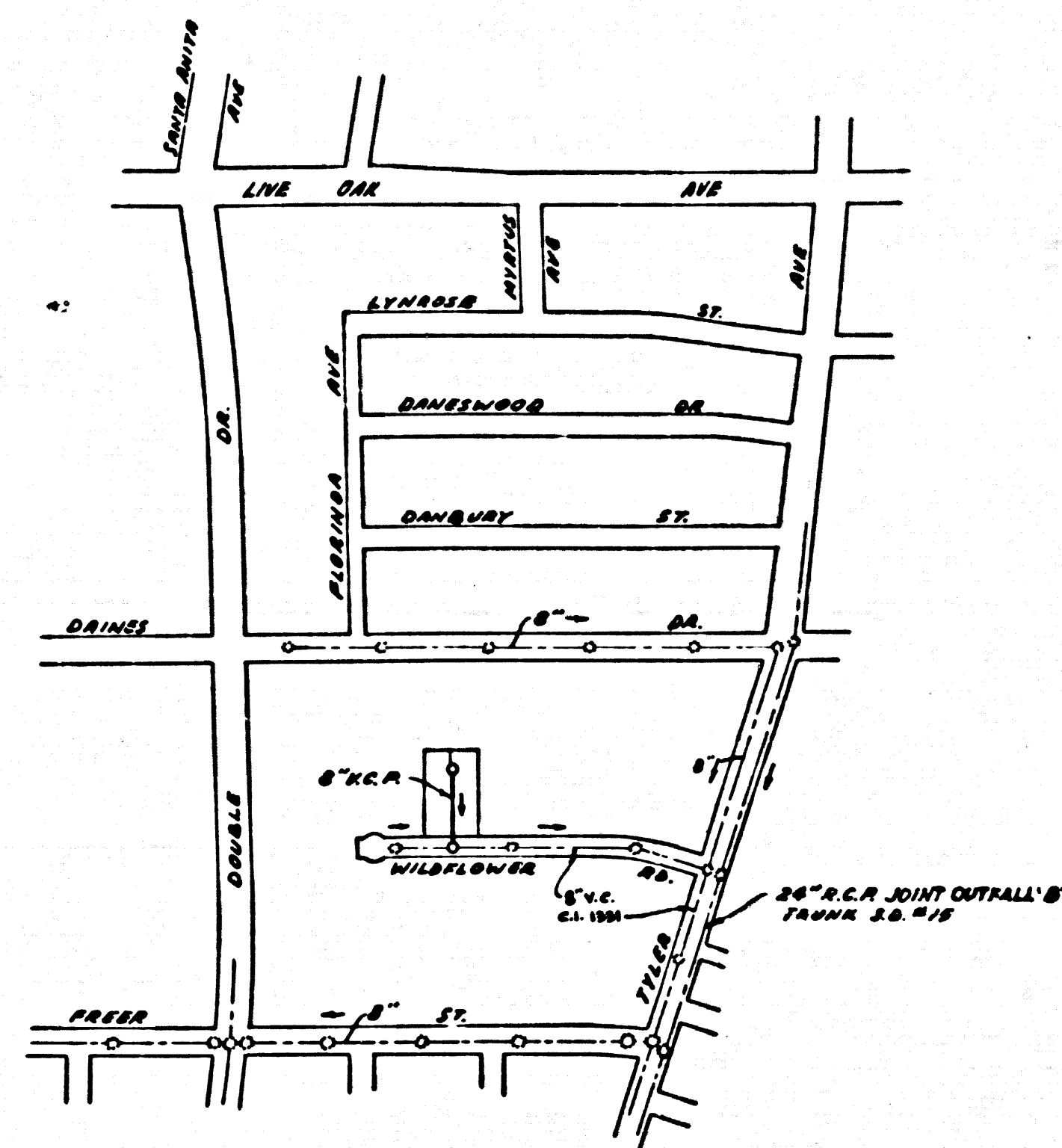
SEPT. 1962

PREPARED IN THE OFFICES OF
LEONARD H. GOWDY, INC.

By Leonard H. Gowdy
REG. C. E. NO. 2823

FOR LEGEND SEE PLAN NO. S-A-64

32635



P.C. 6318
INDEX MAP
SCALE: 1"=400'
SANITARY SEWER R/W
NORTH OF WILDFLOWER ROAD

NO CHARGE FOR CONNECTIONS
R. Pearce 10/23/62

- NOTES:
1. PROVIDE STAKES ON THE PROPERTY LINE OR PROPERTY LINES PRODUCED AT RIGHT ANGLES TO THE SEWER LINE AT THE CENTER LINE OF EACH MANHOLE.
 2. NO REPRESENTATIVE OF THE COUNTY ENGINEER WILL SURVEY OR LAY OUT ANY PORTION OF THE WORK.
 3. THE PRIVATE ENGINEER SHALL FURNISH THE COUNTY ENGINEER WITH GRADE SHEETS AND STATIONING FOR ALL HOUSE LATERALS AND "Y" BRANCHES AND SHALL PROVIDE STAKES FOR THEM AT THEIR PROPER LOCATIONS WITH STATIONING MARKED. ALL HOUSE LATERALS BE CONSTRUCTED IN A STRAIGHT ALIGNMENT AT RIGHT ANGLES FROM THE MAIN LINE EXCEPT AS SHOWN ON THE PLANS. HOUSE LATERALS FROM COUNTY'S SHALL NOT HAVE AN ANGLE OF LESS THAN 45° WITH THE MAIN LINE SEWER. ANY CHANGE IN ALIGNMENT SHALL BE REQUESTED IN WRITING BY THE PRIVATE ENGINEER.
 4. THE PRIVATE ENGINEER SHALL FURNISH THE HOUSE LATERAL DEPTH AT THE PROPERTY LINE BELOW THE TOP OF CURB ELEVATION FOR EACH HOUSE LATERAL ON THE GRADE SHEET.
 5. NO REVISIONS SHALL BE MADE IN THESE PLANS WITHOUT THE APPROVAL OF THE COUNTY ENGINEER.
 6. USE STANDARD MANHOLE FRAMES AND COVERS, S=117.
 7. USE EXTRA STRENGTH PIPE. ALL PIPE IS STANDARD DEPTH.
 8. USE CEMENT MORTAR JOINTS OR MECHANICAL COMPRESSION JOINTS FOR ALL V.C.P. IN MAIN LINE PER SPEC., SECT. 36A 48.
 9. RESURFACE ALL TRENCH WITHIN PAVED AREA TO MEET L.A. COUNTY ROAD DEPT. OR CALIF. STATE HIGHWAY REQUIREMENTS IN ACCORDANCE WITH PERMITS.
 10. IF A POWER POLE IS WITHIN THREE FEET OF THE SEWER, THE SEWER SHALL BE ENCASED PER S-4-172, CASE III TWO FEET ON EITHER SIDE FROM THE POINT OF INTERFERENCE. R/W LINE 8 FEET BELOW GROUND SURFACE.
 11. HOUSE LATERALS TO BE CONSTRUCTED WITH INVERTS AT 1' R/W LINE 8 FEET BELOW GROUND SURFACE.
 12. MANHOLES SHALL BE BRICK SEWER STRUCTURES PER S-4-104 EXCEPT AS NOTED. PRECAST CONCRETE MANHOLES PER S-4-115 OR S-4-172 MAY BE USED TO ENCASEMENT IN LOCATIONS APPROVED BY THE COUNTY ENGINEER.
 13. FOR ALLOWABLE LEAKAGE TEST USE FORMULA NO. 1 SPEC., SEC. 54.
 14. MANHOLE TOPS IN IMPROVED RIGHTS-OF-WAY TO BE LEVEL WITH FINISHED GRADE.
 15. THE CONTRACTOR SHALL NOTIFY THE CONSTRUCTION DIVISION BY TELEPHONE, MADISON 9-4717, EXT. 815 AT LEAST TWENTY-FOUR HOURS BEFORE STARTING ANY WORK UNDER THIS CONTRACT.
 16. STANDARD SPECIFICATIONS DATED MAY 25, 1962 SHALL BE USED IN THE CONSTRUCTION OF THIS PROJECT.
 17. USE MECHANICAL COMPRESSION JOINTS FOR ALL V.C.P. HOUSE LATERALS PER SPEC., SEC. 36.
 18. ALL STATE AND LOCAL TRENCH SAFETY ORDERS WILL BE RIGIDLY ENFORCED.
 19. WHENEVER GROUND WATER IS ENCOUNTERED DURING THE CONSTRUCTION OF THE SEWER, THE V.C.P. JOINTS SHALL BE OF JOINT COMPOUND PER SPEC., SECT. 33B 46, OR MECHANICAL JOINTS PER SPEC., SEC. 36.
 20. IF DURING THE COURSE OF CONSTRUCTION IT IS DETERMINED THAT THERE IS LESS THAN FOUR FEET OF COVER OVER THE TOP OF A MAIN LINE OR A HOUSE LATERAL V.C.P. SEWER WHICH IS NOT INDICATED ON THE PLANS, THE PIPE SHALL BE ENCASED PER S-4-172, CASE III, UNLESS OTHERWISE APPROVED BY THE COUNTY ENGINEER.

NO CONNECTIONS FOR THE DISPOSAL OF INDUSTRIAL WASTES SHALL BE MADE TO SEWERS SHOWN ON THESE DRAWINGS WITHOUT WRITTEN PERMISSION FROM THE CHIEF ENGINEER AND GENERAL MANAGER OF THE COUNTY SANITATION DISTRICT

BENCH MARK: 55 855
S.P.K. & L.D. W. CURB OF TYLER & S. O.P.C.E.
S.W. COR. WILDFLOWER RD. & TYLER AVE. T.R. 8335
1955 ARCADIA QUAD. BLDG. 327.681

NOTE:
GRADES TO WHICH THIS IMPROVEMENT IS TO BE CONSTRUCTED ARE SHOWN ON PLANS AND PROFILES. GRADE POINTS FOR TOP OF CURB, CENTER LINE OF STREETS, OR CENTER LINE OF ALLEYS ARE SHOWN BY CIRCLES ON PROFILES. AT ALL POINTS BETWEEN DESIGNATED POINTS THE GRADE SHALL BE ESTABLISHED SO AS TO CONFORM TO A STRAIGHT LINE DRAWN BETWEEN SAID DESIGNATED POINTS.
ELEVATIONS ARE IN FEET ABOVE U.S.C. & G.S. SEA LEVEL DATUM OF 1929.
THIS DRAWING AND THE DATA HEREON ARE HEREBY MADE A PART OF THE SPECIFICATIONS. NO FILE IN THE OFFICE OF THE COUNTY ENGINEER WORK SHALL BE CONSIDERED ACCORDING TO SPECIFICATIONS. NO FILE IN THE OFFICE OF THE COUNTY ENGINEER AND SHALL BE PROSECUTED ONLY IN THE PRESENCE OF THE COUNTY ENGINEER.
BEFORE WORK CAN BE STARTED THE CONTRACTOR MUST OBTAIN A PERMIT TO EXCAVATE IN COUNTY STREETS FROM THE L.A. COUNTY ROAD DEPT., DISTRICT OFFICE NO. _____ AND PAY A FEE TO THE COUNTY ENGINEER, ROOM 310 L.A. COUNTY ENGINEER'S BLDG. 108 N. SECOND ST SUFFICIENT TO COVER THE COST OF CONSTRUCTION INSPECTION AND RECORD PLANS.
APPROVAL OF THIS PLAN BY THE COUNTY OF LOS ANGELES DOES NOT CONSTITUTE A REPRESENTATION AS TO THE ACCURACY OF THE LOCATION OR THE EXISTENCE OR NON-EXISTENCE OF ANY UNDERGROUND UTILITY PIPE, OR STRUCTURE WITHIN THE LIMITS OF THIS PROJECT. THIS NOTE APPLIES TO ALL PAGES.
IF WORK IS TO BE DONE IN A STATE HIGHWAY, A PERMIT MUST BE OBTAINED FROM THE STATE OF CALIFORNIA, DIVISION OF HIGHWAYS, 125 SOUTH SPRING STREET.

COUNTY OF LOS ANGELES, CALIFORNIA

APPROVED, JOHN A. LAMBIE, COUNTY ENGINEER APPROVED, JOHN D. PARKINSON, CHIEF ENGINEER

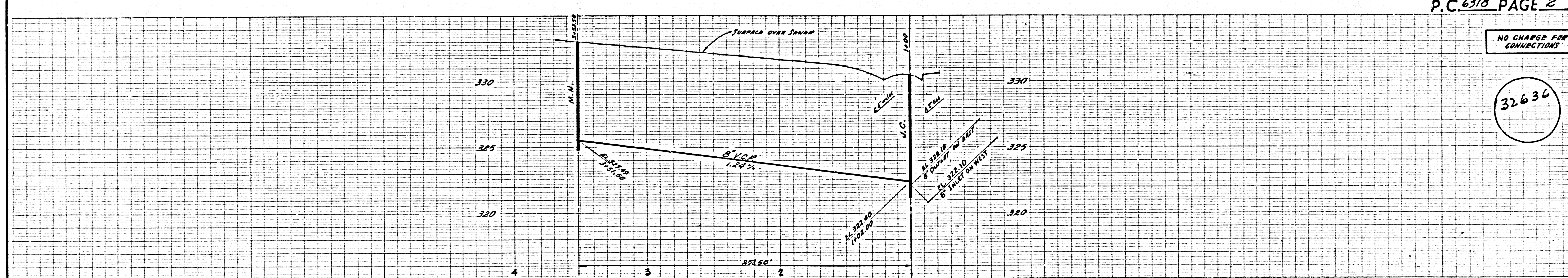
BY *[Signature]* BY *[Signature]*
SANITATION ENGINEER OFFICE ENGINEER

CHECKED BY *[Signature]* 10-26-62

OFFICE OF COUNTY ENGINEER, REG. C. E. NO. 3466

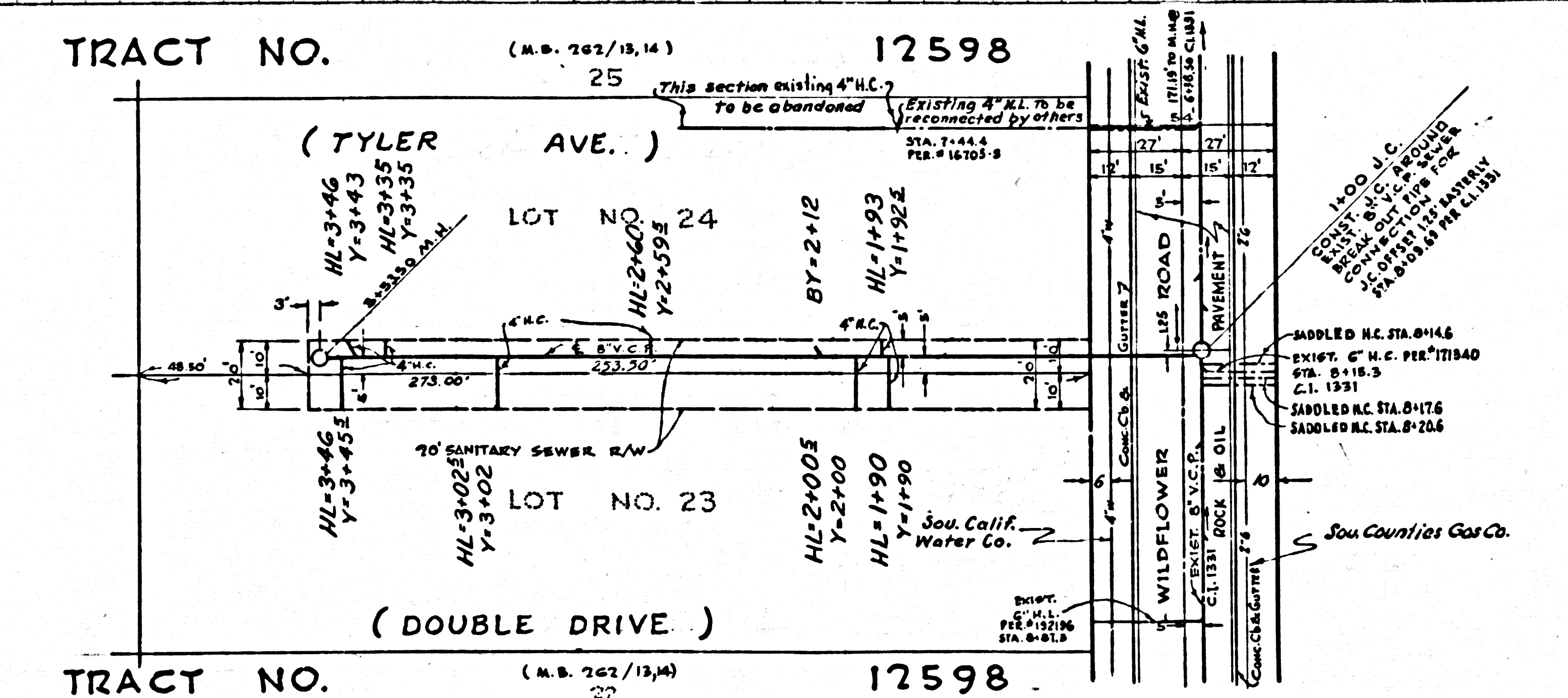
SUBMITTED BY *[Signature]*
JOHN GARDNER VILEY REGIONAL ENGINEER

P.C. 6318 PAGE 2



NO CHARGE FOR CONNECTIONS

32636



SANITARY SEWER R/W NORTH OF WILDFLOWER RD
P.C. 6318
1