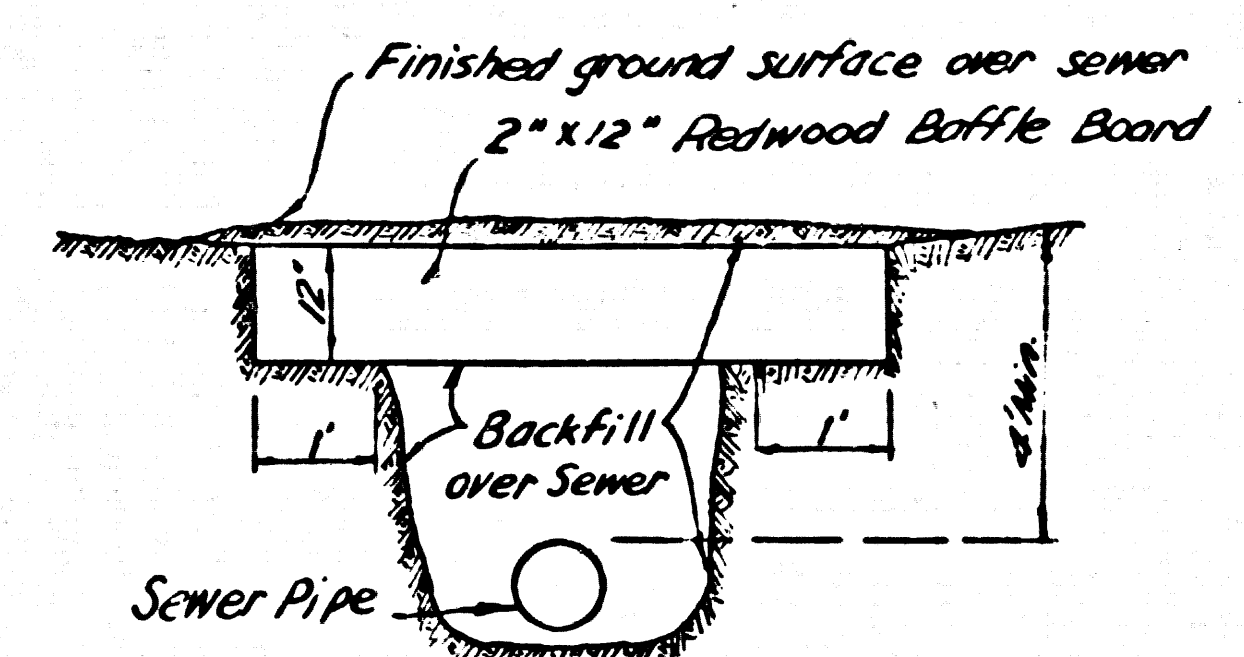


BENCH MARK: S.Y. 4391-A. Elev. 933.340  
 R.D. B.M. top in N. Curb Crest Road ± 2'  
 W. Curb opening 40' N. of Crest Road ± 78' E.  
 & Hawthorne Boulevard. P.V. Quad. 1935

2" x 12" REDWOOD Baffle Board Detail  
 No Scale



- NOTE:
- Each end of baffle board will extend one foot into undisturbed ground.
  - Baffles will be so spaced that the top of the lower baffle shall be level with the bottom of the upper baffle board.
  - The upper layer of backfill to be 1 foot min. of top soil. The soil shall be tamped in place and planted with mustard until growth is restored.

DOUBLE SCALE  
 LOMITA BLDG. DIST. NO. 12

PROFILE ALIGNMENT AND GRADE OF P.C. 6323  
 SANITARY SEWERS PAGE 1  
 J.N. 0358.84  
 TO BE CONSTRUCTED IN

RIGHT OF WAY NORTHERLY OF TRACT N27113  
 PRIVATE CONTRACT NO. 6323

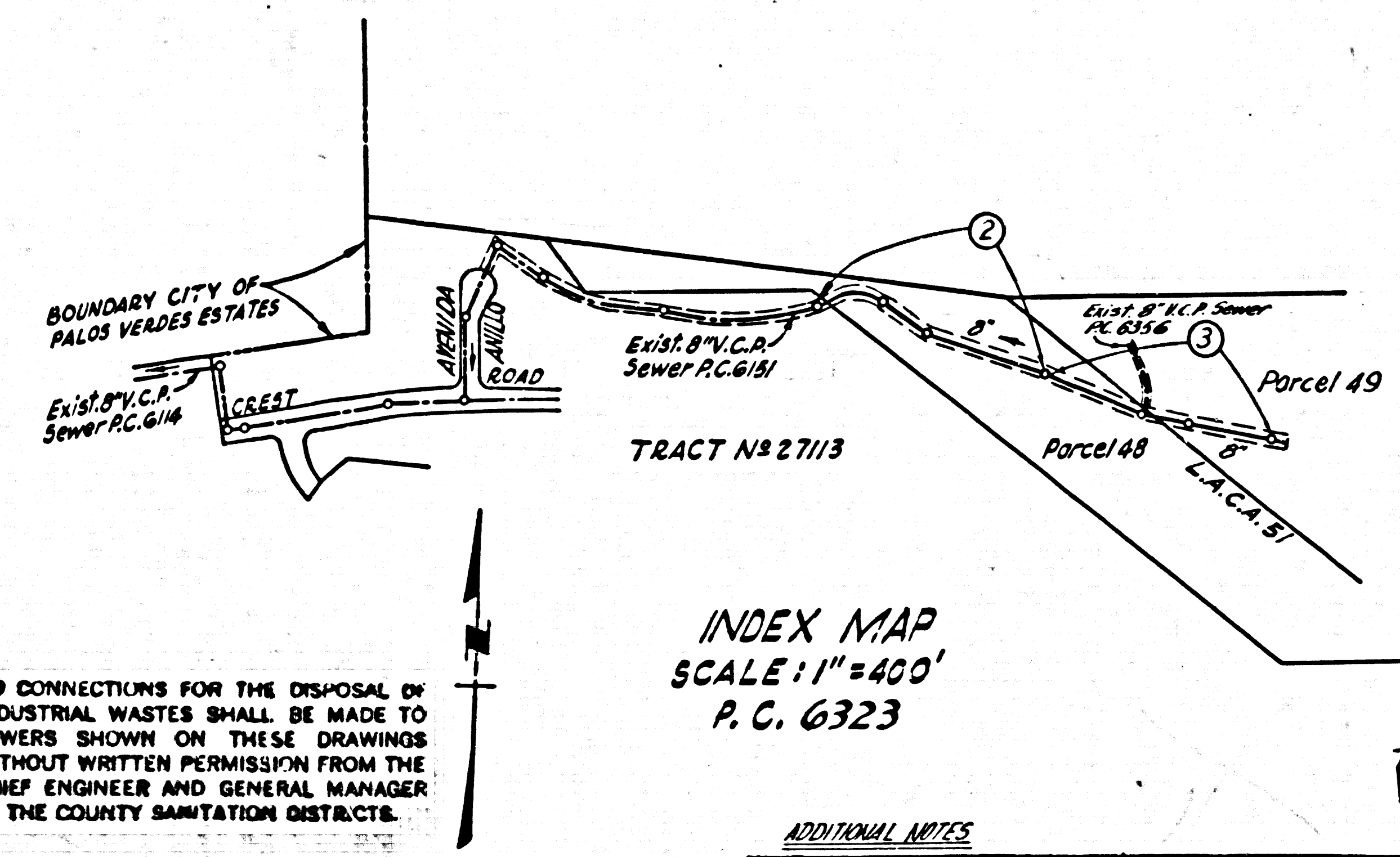
W.S. 27  
 2 SHEETS; 3 PAGES  
 SCALE: VERT. 1" = 8'  
 HORIZ. 1" = 40' MAY, 1962

33920

PREPARED IN THE OFFICES OF  
 ENGINEERING SERVICE CORPORATION

BY: *P.J. Lewis*  
 REG. C. E. NO. 3672

FOR LEGEND SEE PLAN NO. S-A-64



INDEX MAP  
 SCALE: 1" = 400'  
 P.C. 6323

NO CONNECTIONS FOR THE DISPOSAL OF INDUSTRIAL WASTES SHALL BE MADE TO SEWERS SHOWN ON THESE DRAWINGS WITHOUT WRITTEN PERMISSION FROM THE CHIEF ENGINEER AND GENERAL MANAGER OF THE COUNTY SANITATION DISTRICTS.

PRIVATE ENGINEER'S  
 NOTICE TO CONTRACTOR

THE EXISTENCE AND LOCATION OF ANY UNDERGROUND UTILITY PIPES OR STRUCTURES SHOWN ON THESE PLANS ARE OBTAINED BY A SEARCH OF THE AVAILABLE RECORDS TO THE BEST OF OUR KNOWLEDGE. THERE ARE NO EXISTING UTILITIES EXCEPT AS SHOWN ON THIS MAP. THE CONTRACTOR IS REQUIRED TO TAKE PRECAUTIONARY MEASURES TO PROTECT THE UTILITY LINES SHOWN AND ANY OTHER LINES NOT OF RECORD OR NOT SHOWN ON THIS DRAWING.

ADDITIONAL NOTES

- Sewer branch must be graded according to approved Grading Plan # 8445 before sewer construction is begun.
- After sewer construction is completed trench is to be finish graded.
- All recommendations made in the geological report of April 24, 1963 from Converse Foundation Engineers & Palos Verdes Properties must be followed.
- The number and location of lateral trenches referred to in the above letter shall be determined by the geological consultant in the field.
- Specific approval by the geological consultant of the completed installation will be required.

BASIS OF BEARINGS

That certain course in the E. of Ocean Crest Rd. shown on map of Tract N27113, MB. 689-11, 12, as having a bearing and length of N. 89° 41' 48" W. 151.00 feet.

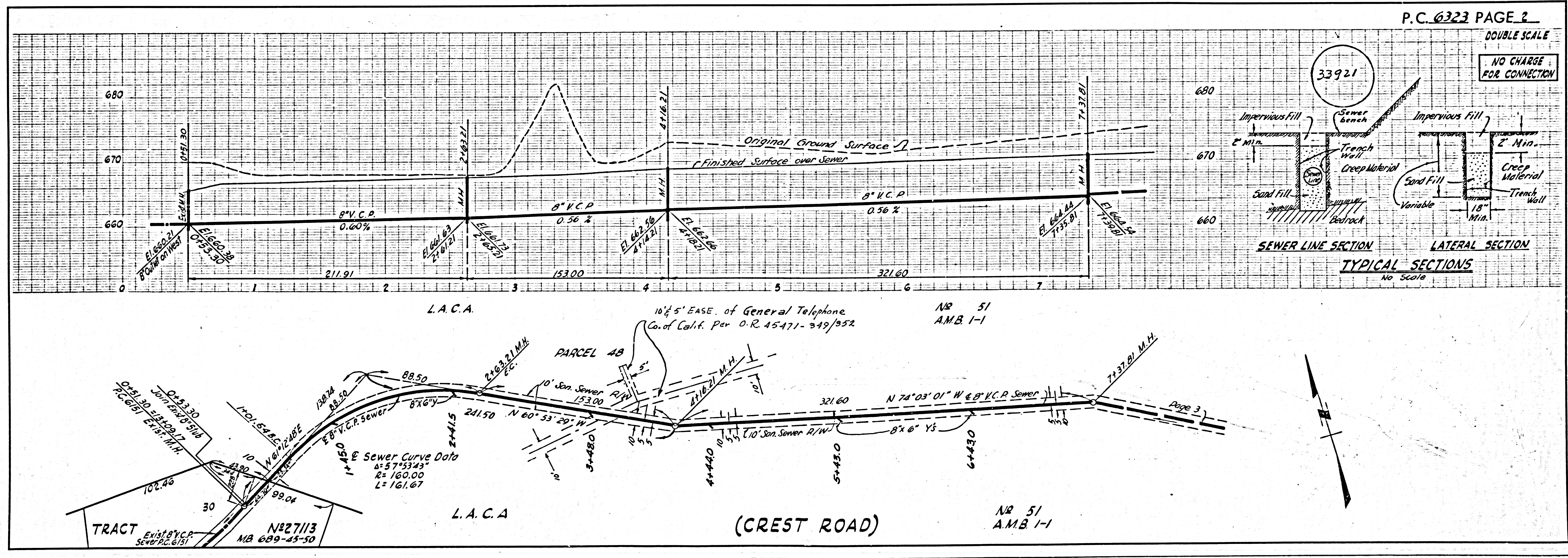
REVISION - PAGE 2  
 MOVED SEWER LINE 3' NLY BETWEEN ST. 11+18.00 TO ST. 12+67.43  
*Kalish Schaefer 5/20/62*

NO CHARGE FOR CONNECTIONS  
*L. Curtis 1-25-63*

- NOTES:
- PROVIDE STAKES ON THE PROPERTY LINE OR PROPERTY LINES PRODUCED AT RIGHT ANGLES TO THE SEWER LINE AT THE CENTER LINE OF EACH MANHOLE.
  - NO REPRESENTATIVE OF THE COUNTY ENGINEER WILL SURVEY OR LAYOUT ANY PORTION OF THE WORK.
  - THE OWNER OR HIS AUTHORIZED REPRESENTATIVE SHALL FURNISH THE COUNTY ENGINEER WITH GRADE SHEETS AND STATION FOR ALL HOUSE LATERALS AND Y BRANCHES AND SHALL PROVIDE STAKES FOR THEM AT THEIR PROPER LOCATIONS WITH STATIONING PLAINLY MARKED. ANY CHANGE IN LOCATION SHALL BE REQUESTED IN WRITING BY THE OWNER OR HIS REPRESENTATIVE.
  - NO REVISIONS SHALL BE MADE IN THESE PLANS WITHOUT THE APPROVAL OF THE COUNTY ENGINEER.
  - USE STANDARD MANHOLE FRAMES AND COVERS, S-A-117.
  - USE EXTRA STRENGTH M.C.P. EXCEPT AS NOTED ALL PIPE STANDARD GRADE.
  - USE MECHANICAL COMPRESSION JOINTS FOR ALL VITRIFIED CLAY PIPE PER SPECS. SEC. 36.48 & 41.
  - RESURFACE ALL TRENCH WITHIN PAVED AREA TO MEET L.A. COUNTY ROAD DEPT., OR CALIF. STATE HIGHWAY DEPT. REQUIREMENTS IN ACCORDANCE WITH PERMITS.
  - ENCASE FOUR FEET OF SEWER AT POINTS OF INTERFERENCE WITH POLES, S-A-119.
  - ALL STRUCTURES SHALL BE BRICK SEWER STRUCTURES, S-A-104.
  - FOR ALLOWABLE LEAKAGE TEST USE FORMULA NO. \_\_\_\_\_ PER SPECS. SEC. 54.
  - MANHOLE TOPS IN UNIMPROVED RIGHTS-OF-WAY TO BE 4" ABOVE FINISHED GRADE.
  - THE PRIVATE ENGINEER SHALL FURNISH THE HOUSE LATERAL DEPTH AT THE PROPERTY LINE BELOW THE TOP OF CURVE ELEVATION FOR EACH HOUSE LATERAL ON THE GRADE SHEET.
  - THE CONTRACTOR SHALL NOTIFY THE CONSTRUCTION DIVISION BY TELEPHONE, MADISON 9-4747, EXT. 81851 AT LEAST 24 HOURS BEFORE STARTING ANY WORK UNDER THIS CONTRACT.
  - SPECIFICATIONS DATED MAY 25, 1962 APPLY IN THE CONSTRUCTION OF THIS PROJECT.
  - FILLED AREAS AND ALL BACKFILL FOR THE TRENCH MUST BE COMPACTED TO A MINIMUM OF 90% RELATIVE DENSITY AS DETERMINED BY ASTM D 1557. ACCEPTABLE CERTIFICATION SHALL BE SUBMITTED TO THE CONSTRUCTION DIVISION OF THE COUNTY ENGINEER OF SUCH COMPACTION.
  - ALL STATE AND LOCAL TRENCH SAFETY ORDERS WILL BE RIGIDLY ENFORCED.

ENGINEERING SERVICE CORPORATION 1127 W. WASHINGTON BLVD. LOS ANGELES 15, CALIF. RI. 9-7281	
REVISIONS	TRACED BY <i>G. Falgout</i>
	DES'G'D BY <i>L.E.J. &amp; F.K.K.</i>
	C.K'D BY <i>C.M.R.</i>
	SUBMITTED
SUB STRUCTURES OK'D	
W. O. NO.	DWG. NO.
7303-20	May 1962 As Noted
DATE	SCALE
	1" = 8'
L.B.	F.B.
4255	600

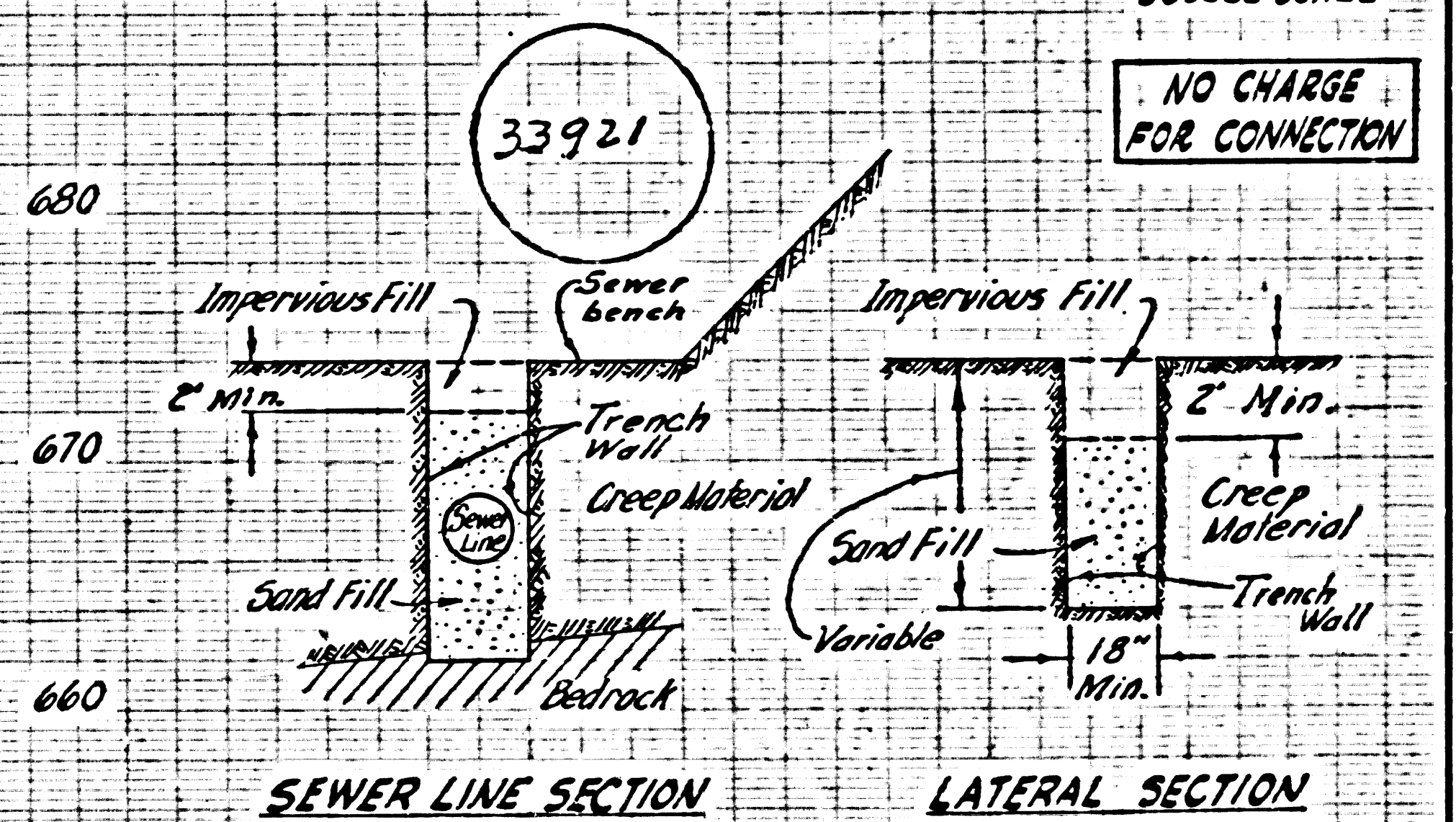
NOTE:  
 GRADES TO WHICH THIS IMPROVEMENT IS TO BE CONSTRUCTED ARE SHOWN ON PLANS AND PROFILES. GRADE POINTS FOR TOP OF CURB, CENTER LINE OF STREETS, OR CENTER LINE OF ALLEYS ARE SHOWN BY CIRCLES ON PROFILES. AT ALL POINTS BETWEEN DESIGNATED POINTS THE GRADE SHALL BE ESTABLISHED SO AS TO CONFORM TO A STRAIGHT LINE DRAWN BETWEEN SAID DESIGNATED POINTS.  
 ELEVATIONS ARE IN FEET ABOVE U.S.C. & G.S. SEA LEVEL DATUM OF 1929.  
 THIS DRAWING AND THE DATA HEREON ARE HEREBY MADE A PART OF THE SPECIFICATIONS.  
 WORK SHALL BE CONSTRUCTED ACCORDING TO SPECIFICATIONS ON FILE IN THE OFFICE OF THE COUNTY ENGINEER AND SHALL BE PROSECUTED ONLY IN THE PRESENCE OF THE COUNTY ENGINEER.  
 BEFORE WORK CAN BE STARTED, THE CONTRACTOR MUST OBTAIN A PERMIT TO EXCAVATE IN COUNTY STREETS FROM THE L.A. COUNTY ROAD DEPT., DISTRICT 12, AND PAY A FEE TO THE COUNTY ENGINEER, ROOM 340, COUNTY ENGINEER BLDG., 127 W. 2<sup>ND</sup> ST., SUFFICIENT TO COVER THE COST OF CONSTRUCTION INSPECTION AND RECORD PLANS.  
 APPROVAL OF THIS PLAN BY THE COUNTY OF LOS ANGELES DOES NOT CONSTITUTE A REPRESENTATION AS TO THE ACCURACY OF THE LOCATION OF OR THE EXISTENCE OR NON-EXISTENCE OF ANY UNDERGROUND UTILITY PIPE, OR STRUCTURE WITHIN THE LIMITS OF THIS PROJECT. THIS NOTE APPLIES TO ALL PAGES.  
 IF WORK IS TO BE DONE IN A STATE HIGHWAY, A PERMIT MUST BE OBTAINED FROM THE STATE OF CALIFORNIA, DIVISION OF HIGHWAYS, 126 SOUTH SPRING STREET.  
 COUNTY OF LOS ANGELES, CALIFORNIA  
 APPROVED, JOHN A. LAMBIE, COUNTY ENGINEER  
 APPROVED, *J.D. [Signature]* CHIEF ENGINEER  
 TO SAN. DIST. NO. 5  
 BY: *[Signature]* SANITATION ENGINEER  
 BY: *[Signature]* OFFICE ENGINEER  
 CHECKED BY *[Signature]* 5-21-62  
 OFFICE OF COUNTY ENGINEER, REG. C. E. NO. 3166  
 SUBMITTED BY: *Jack C. [Signature]*  
 Palos Verdes-Centignola Valley Regional Engineer R.C.E. 5631



P.C. 6323 PAGE 2

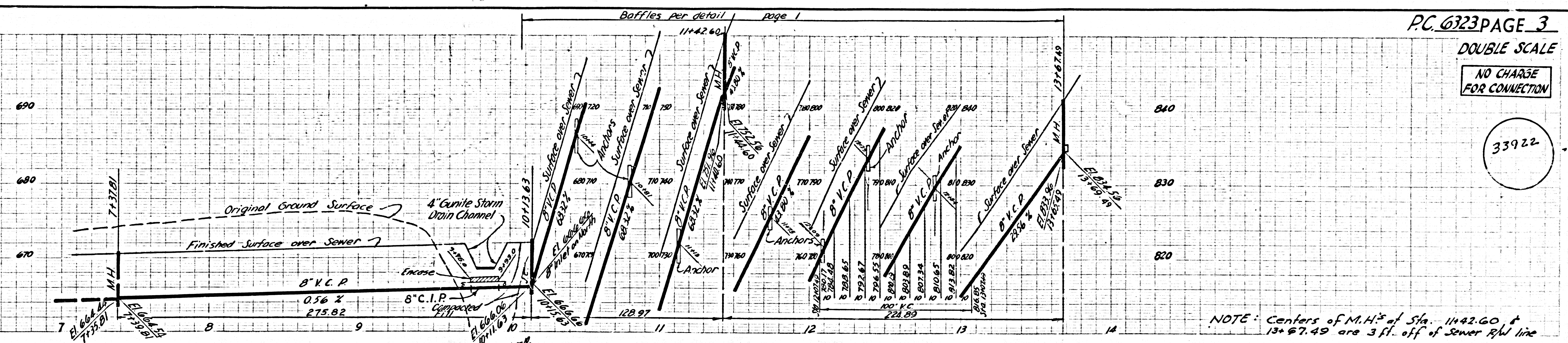
DOUBLE SCALE

NO CHARGE FOR CONNECTION

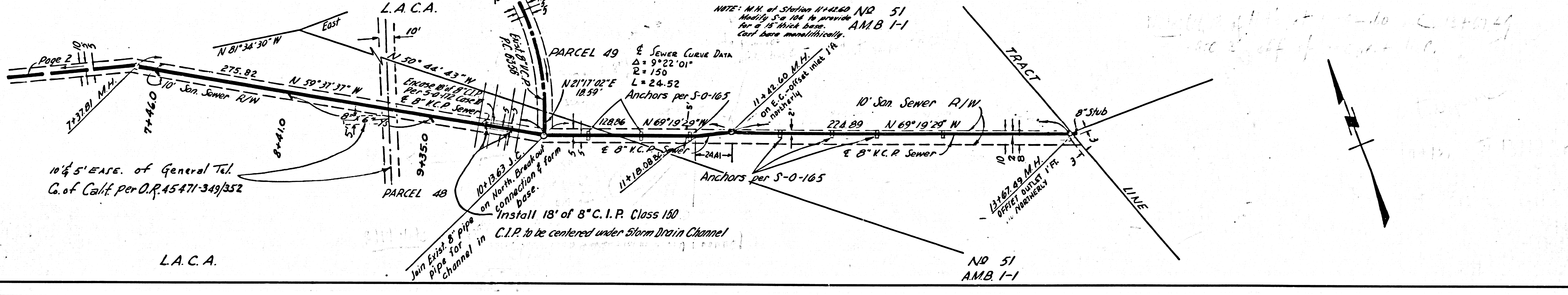


TYPICAL SECTIONS  
 No Scale

33922



NOTE: Centers of M.H.'s of Sta. 11+42.60 & 13+67.49 are 3 ft. off of Sewer R/W line



NOTE: M.H. of Station 11+42.60 NO 51 Modify S.O. 104 to provide for a 15' thick base. AMB 1-1 Call base manhole.

10' EASE. of General Tel. Co. of Calif. per O.P. 45471-349/352

L.A.C.A.

NO 51 AMB 1-1