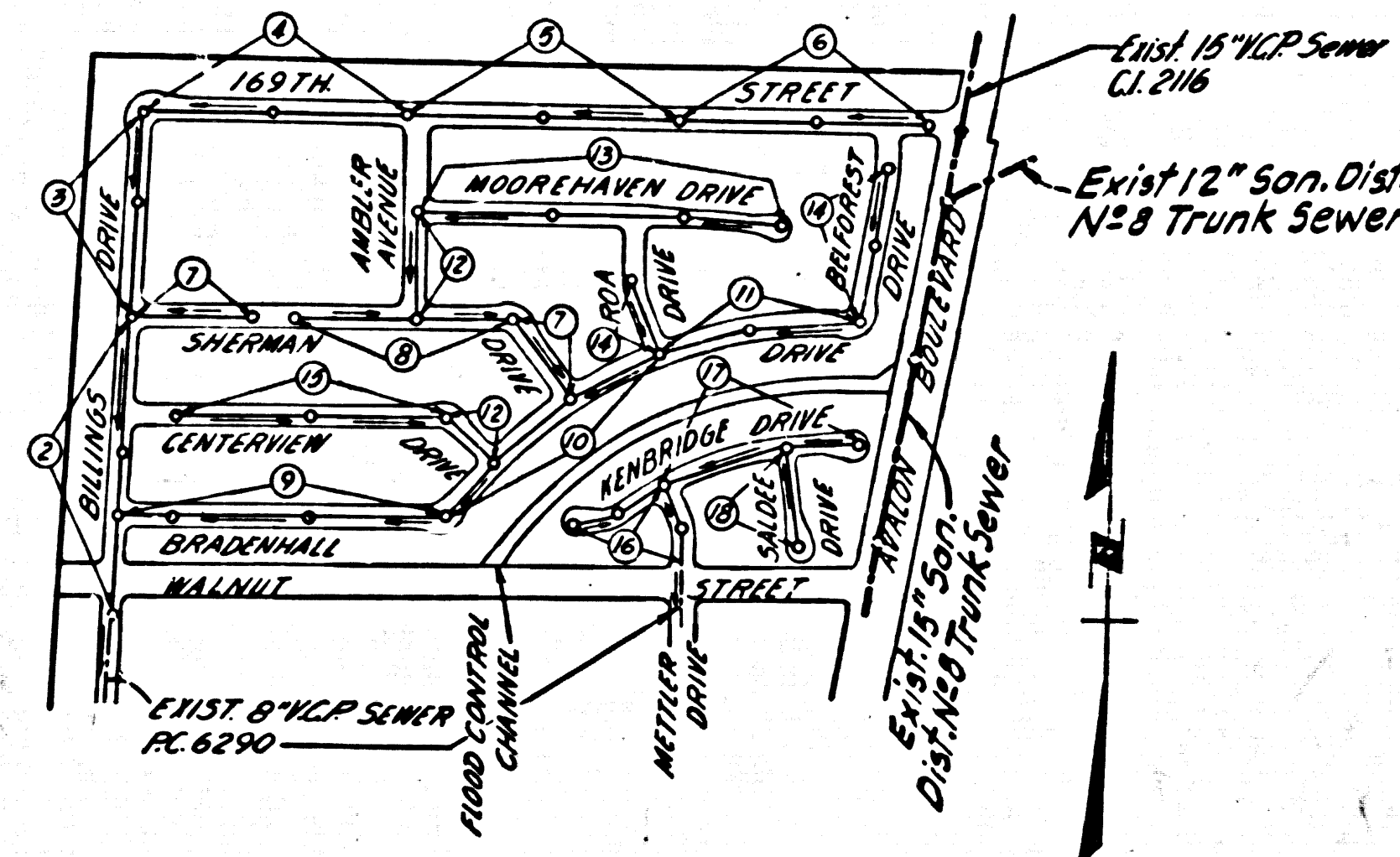


BENCH MARK.
51 3128 Fd. L. & Sp. Conc. Base of NE. leg of Power
Transmission tower N40° E AVENUE BLVD. 1st Tower
N. of ARTESIA STREET.
ELEV. 42665 GARDENA-1955

15. HOUSE LATERALS FROM CHIMNEYS SHALL NOT HAVE AN ANGLE OF LESS
THAN 45° WITH THE MAIN LINE SEWER.



INDEX MAP
TRACT NO. 27056
SCALE 1"=600
P.C. 6324

NO CONNECTIONS FOR THE DISPOSAL OF
INDUSTRIAL WASTES SHALL BE MADE TO
SEWERS SHOWN ON THESE DRAWINGS
WITHOUT WRITTEN PERMISSION FROM THE
ENGINEER AND GENERAL MANAGER
OF THE COUNTY SANITATION DISTRICTS.

ISSUE NO HOUSE
CONNECTION PERMITS
UNTIL P.C. 6290 IS
ACCEPTED

NO CHARGE FOR
CONNECTIONS
L. Austin 11-15-62

LENNOX BLDG. DIST. NO. 7

- NOTES:
- PROVIDE STAKES ON THE PROPERTY LINE OR PROPERTY LINES PRODUCED AT RIGHT ANGLES TO THE SEWER LINE AT THE CENTER LINE OF EACH MANHOLE.
 - NO REPRESENTATIVE OF THE COUNTY ENGINEER WILL SURVEY OR LAYOUT ANY PORTION OF THE WORK.
 - THE PRIVATE ENGINEER SHALL FURNISH THE COUNTY ENGINEER WITH GRADE SHEETS AND STATION FOR ALL HOUSE LATERALS AND Y BRANCHES AND SHALL PROVIDE STAKES FOR THEM AT THEIR PROPER LOCATIONS WITH STATIONING PLAINLY MARKED. ALL HOUSE LATERALS SHALL BE CONSTRUCTED IN A STRAIGHT ALIGNMENT AT RIGHT ANGLES FROM THE MAIN LINE SEWER. EXCEPT AS SHOWN ON THESE PLANS, ALL CONNECTIONS SHALL BE MADE AT RIGHT ANGLES. NO REVISIONS SHALL BE MADE IN THESE PLANS WITHOUT THE APPROVAL OF THE COUNTY ENGINEER.
 - USE STANDARD MANHOLE FRAMES AND COVERS, S.A-117, EXCEPT AS NOTED.
 - USE EXTRA STRENGTH PIPE, ALL PIPE IS STANDARD DEPTH, EXCEPT AS NOTED.
 - USE MECHANICAL COMPRESSION JOINTS FOR 8" V.C.P. PER SPEC. SECS. 36, 40 & 45 USE RESISTANCE ALL TRENCH WITHIN PAVED AREA TO MEET L.A. COUNTY DIST. OR CALIF. STATE HIGHWAY REQUIREMENTS IN ACCORDANCE WITH PERMITS.
 - ENCASE FOUR FEET OF SEWER AT POINTS OF INTERFERENCE WITH POLES, S.A-172 CASE III.
 - HOUSE LATERALS TO BE CONSTRUCTED WITH INVERTS AT PROPERTY LINE. 6" FEET BELOW CURB GRADE EXCEPT AS NOTED.
 - ALL STRUCTURES SHALL BE BRICK SEWER STRUCTURES, S.A-101, PRECAST REINFORCED CONCRETE MANHOLES PER S-A-85 OR S-A-173 MAY BE USED AS AN ALTERNATE IN CONNECTIONS APPROVED BY THE COUNTY ENGINEER.
 - FOR ALLOWABLE LEAKAGE TEST USE FORMULA NO. 1, SPEC. SEC. 54.
 - MANHOLE TOPS IN UNIMPROVED RIGHTS-OF-WAY TO BE 8" ABOVE FINISHED GRADE EXCEPT AS NOTED.
 - THE PRIVATE ENGINEER IS TO FURNISH THE HOUSE LATERAL DEPTH AT PROPERTY LINE BELOW THE TOP OF CURB ELEVATION FOR EACH HOUSE LATERAL ON THE GRADE SHEET.
 - THE CONTRACTOR SHALL NOTIFY THE CONSTRUCTION DIVISION BY TELEPHONE, MADISON 9-4147, EXT. 8155, AT LEAST 24 HOURS BEFORE STARTING ANY WORK UNDER THIS CONTRACT.
 - SPECIFICATIONS DATED MAY 25, 1962 APPLY IN THE CONSTRUCTION OF THIS PROJECT.
 - (a) NO CONSTRUCTION SHALL BE PERMITTED UNLESS ACCEPTABLE CERTIFICATION IS SUBMITTED TO THE CONSTRUCTION DIVISION OF THE COUNTY ENGINEER'S DEPT. THAT RELATIVE CONSTRUCTION IS GREATER THAN 80%.
 - (b) IF CONSTRUCTION IS LESS THAN 80% THE SEWER MUST BE CROWNED AS SHOWN ON THE PLANS PER S-A-104 OR USE A SPECIAL COURSE PER S-A-117, CASE III, SPECIAL MANHOLE BASES MUST BE INSTALLED PER S-A-123 AS INDICATED ON THESE PLANS.
 - (c) IF CONSTRUCTION IS 80% OR GREATER, CRADLING AND SPECIAL MANHOLE BASES ARE NOT REQUIRED.
 - ALL STATE & LOCAL TRENCH SAFETY ORDERS WILL BE RIGIDLY ENFORCED.

PROFILE ALIGNMENT AND GRADE OF P.C. 6324
SANITARY SEWERS PAGE 1
TO BE CONSTRUCTED IN J.N. 0358.85

TRACT NO. 27056
PRIVATE CONTRACT NO. 6324

W.S. 26
9 SHEETS, 18 PAGES
SCALE: VERT. 1"=4' AUGUST, 1962
PREPARED IN THE OFFICES OF
ENGINEERING SERVICE CORPORATION
By: *C. J. Davis*
REG. C. E. NO. 7692
FOR LEGEND SEE PLAN NO. S-A-64

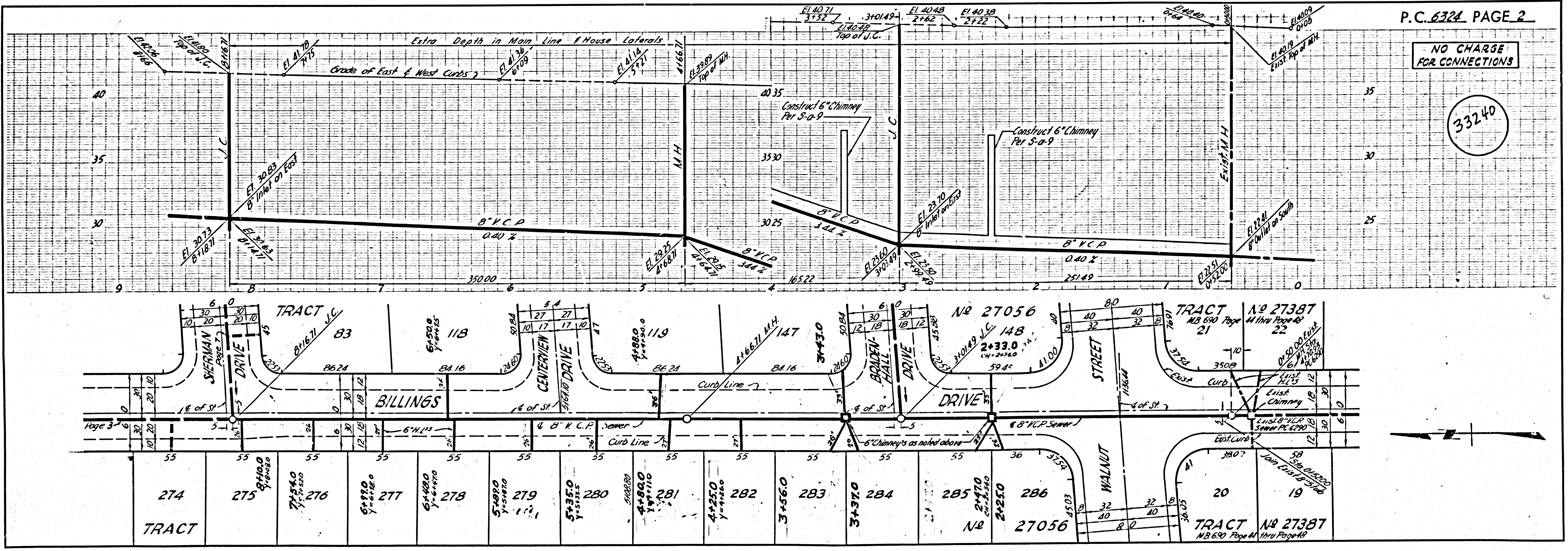
33239

NOTE:
GRADES TO WHICH THIS IMPROVEMENT IS TO BE CONSTRUCTED ARE SHOWN ON PLANS AND PROFILES. GRADE POINTS FOR TOP OF CURBS, CENTER LINE OF STREETS, OR CENTER LINE OF ALLEYS ARE SHOWN BY CIRCLES ON PROFILES. AT ALL POINTS BETWEEN DESIGNATED POINTS THE GRADE SHALL BE ESTABLISHED SO AS TO CONFORM TO A STRAIGHT LINE DRAWN BETWEEN SAID DESIGNATED POINTS.
ELEVATIONS ARE IN FEET ABOVE U.S.C. & G.S. SEA LEVEL DATUM OF 1929.
THIS DRAWING AND THE DATA HEREON ARE HEREBY MADE A PART OF THE SPECIFICATIONS.
WORK SHALL BE CONSTRUCTED ACCORDING TO SPECIFICATIONS ON FILE IN THE OFFICE OF THE COUNTY ENGINEER AND SHALL BE PROSECUTED ONLY IN THE PRESENCE OF THE COUNTY ENGINEER.
BEFORE WORK CAN BE STARTED, THE CONTRACTOR MUST OBTAIN A PERMIT TO EXCAVATE IN COUNTY STREETS FROM THE L.A. COUNTY ROAD DIST. DISTRICT OFFICE AND LAND AND FEET TO THE COUNTY ENGINEER, ROOM 310 COUNTY ENGINEER'S BUILDING, 400 W. 4TH STREET, SUFFICIENT TO COVER THE COST OF CONSTRUCTION INSPECTION AND RECORD PLANS.
APPROVAL OF THIS PLAN BY THE COUNTY OF LOS ANGELES DOES NOT CONSTITUTE A REPRESENTATION AS TO THE ACCURACY OF THE LOCATION OF OR THE EXISTENCE OR NON-EXISTENCE OF ANY UNDERGROUND UTILITY PIPE, OR STRUCTURE WITHIN THE LIMITS OF THIS PROJECT. THIS NOTE APPLIES TO ALL PAGES.
IF WORK IS TO BE DONE IN A STATE HIGHWAY, A PERMIT MUST BE OBTAINED FROM THE STATE OF CALIFORNIA, DIVISION OF HIGHWAYS, 120 SOUTH SPRING STREET.

ENGINEERING SERVICE CORPORATION
1127 W. WASHINGTON BLVD.
LOS ANGELES 15, CALIF. RI. 9-7281

REVISIONS		TRACED BY
		ES.F.G.
		DES'G'D BY H.T.C.F.
		CK'D BY C.M.R.
		SUBMITTED
SUB STRUCTURES OK'D		
W. O. NO.	DWG. NO.	DATE
5950-145		AUG. 1962
		SCALE
		L. B.
		P. B.
		LL

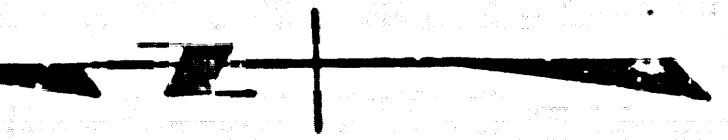
COUNTY OF LOS ANGELES, CALIFORNIA
APPROVED, JOHN A. LAMBE, COUNTY ENGINEER
APPROVED, J.D. PARKHURST, CHIEF ENGINEER
BY: *James E. ...* OFFICE ENGINEER
CHECKED BY: *W. Duda 11-11-62*
OFFICE OF COUNTY ENGINEER, REG. C. E. NO. 7446
SUBMITTED *Jack C. Lansing*
PALOS VERDES-CENTINELA VALLEY REGIONAL ENGINEER



P.C. 6324 PAGE 2

NO CHARGE FOR CONNECTIONS

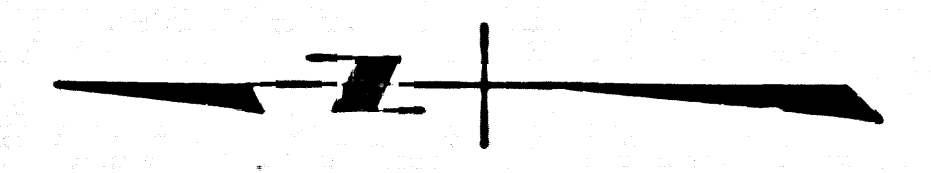
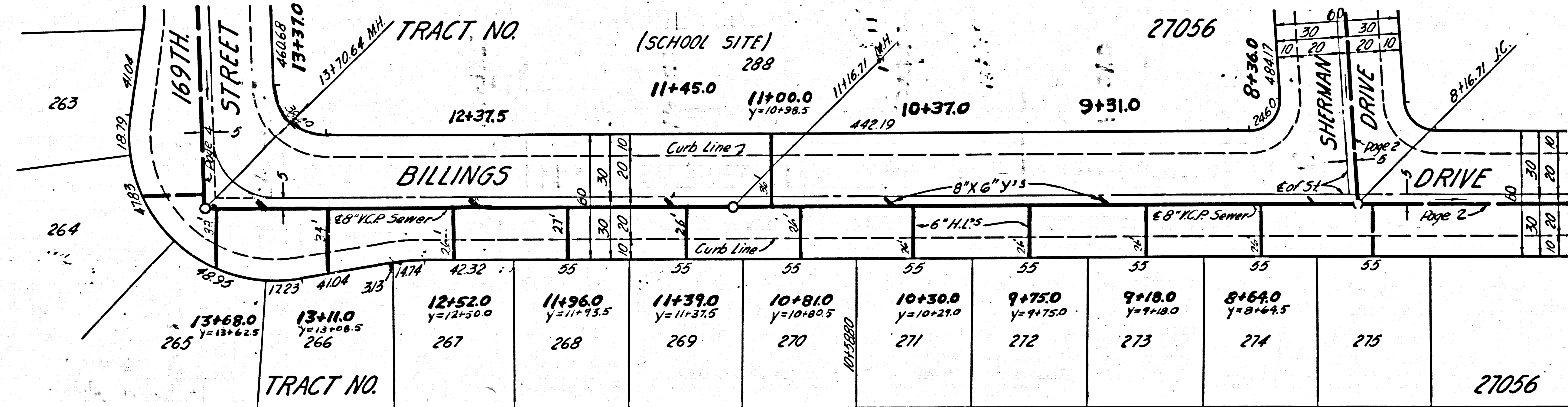
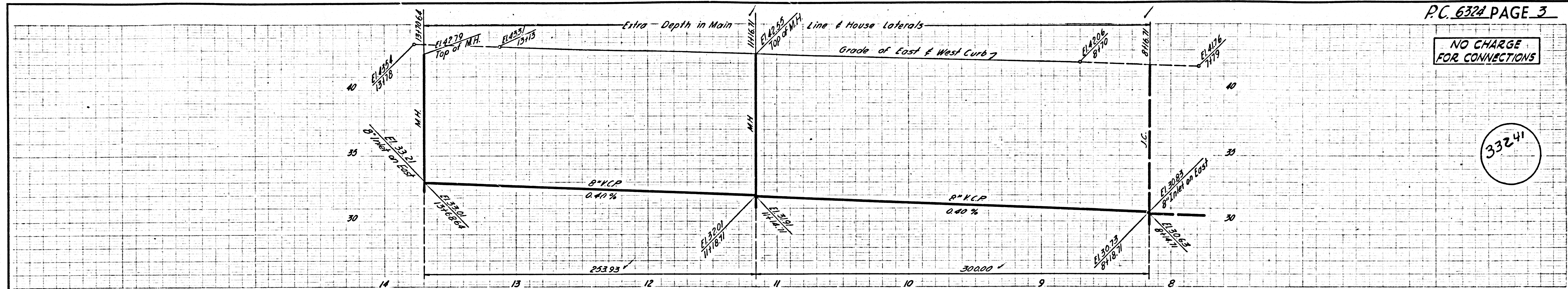
33240



NO CHARGE FOR CONNECTIONS

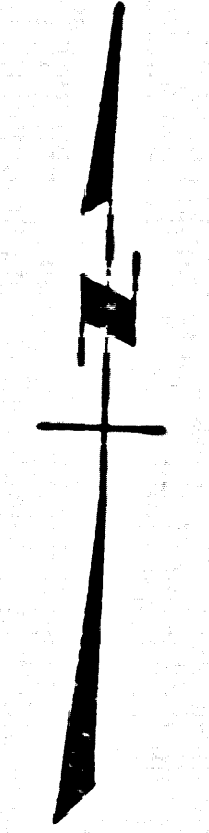
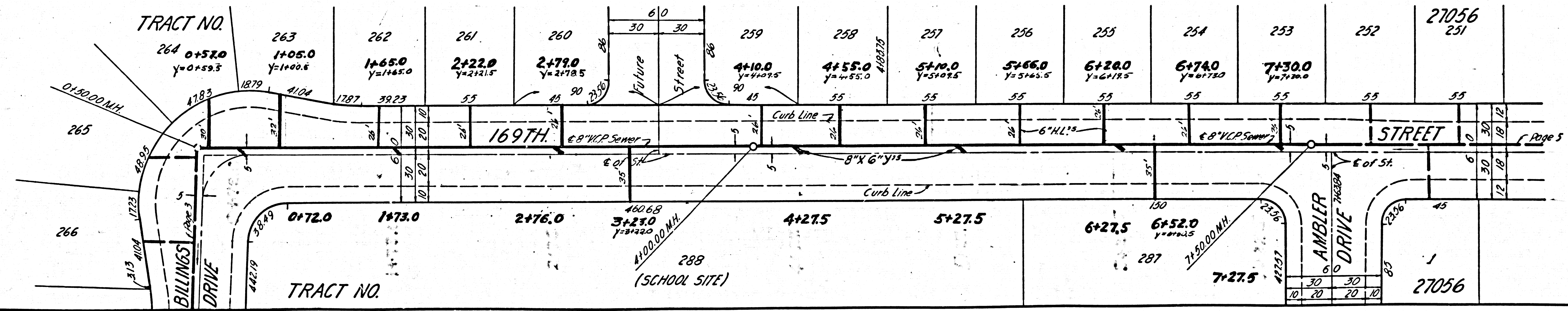
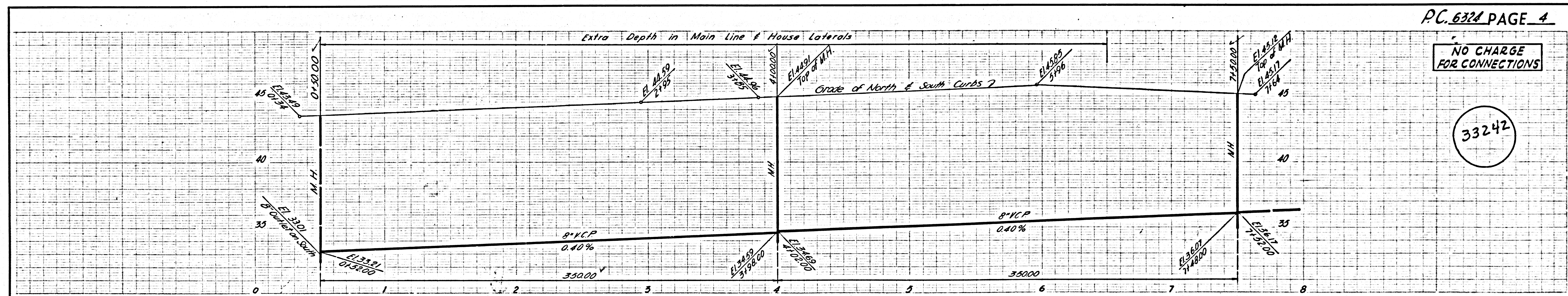
33241

5-13971-16-51029-6-CE-335



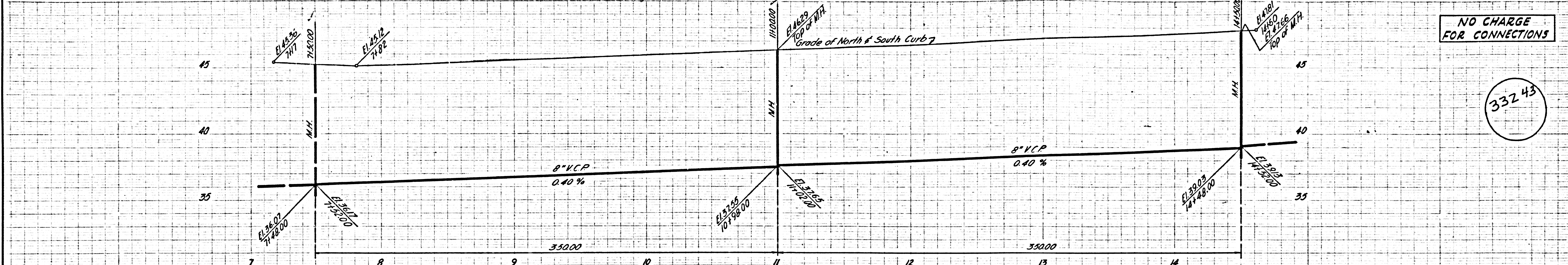
NO CHARGE FOR CONNECTIONS

33242

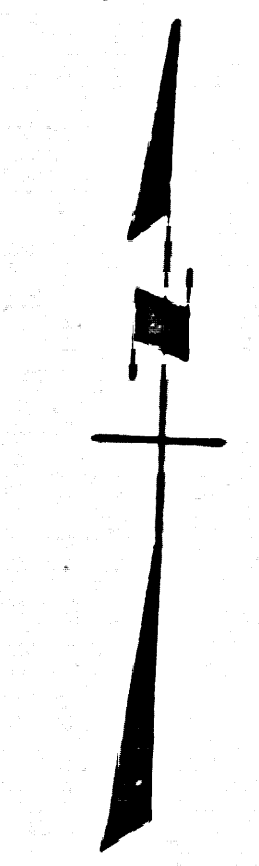


NO CHARGE FOR CONNECTIONS

33243

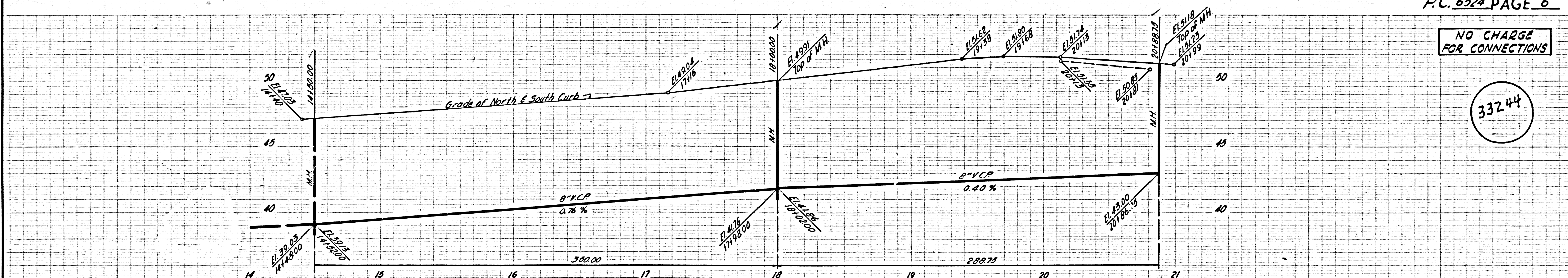


TRACT NO. 253	252	251	250	249	248	247	246	245	244	243	242	241	240	27056
	7+86.5 y=7845	8+42.0 y=8142.0	8+94.0 y=8230	9+50.0 y=8410	10+06.0 y=8500	10+61.0 y=8590	11+17.0 y=8680	11+70.0 y=8770	12+25.0 y=8860	12+80.0 y=8950	13+35.0 y=9040	13+90.0 y=9130	14+41.0 y=9220	
	55	55	55	55	55	55	55	55	55	55	55	55	55	55
	169TH STREET													
	Curb Line													
	6" H.L.													
	8" V.C.P. Sewer													
	Grade of North & South Curb													
	M.H.													
	Elevations and Y-coordinates													
	8+19.0 y=8180	8+81.0 y=8000	9+33.0 y=8315	9+90.0 y=8480	10+45.0 y=8640	11+09.0 y=8805	11+55.0 y=8970	12+08.0 y=9140	12+64.0 y=9305	13+20.0 y=9470	13+75.0 y=9635	14+30.0 y=9800	14+85.0 y=9965	
	1	2	3	4	5	6	7	8	9	10	11	12	13	
TRACT NO.														

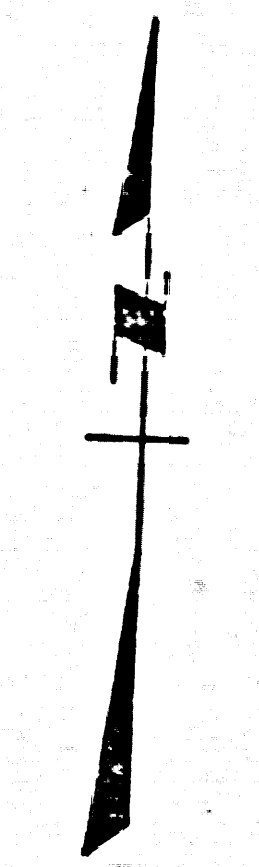


NO CHARGE FOR CONNECTIONS

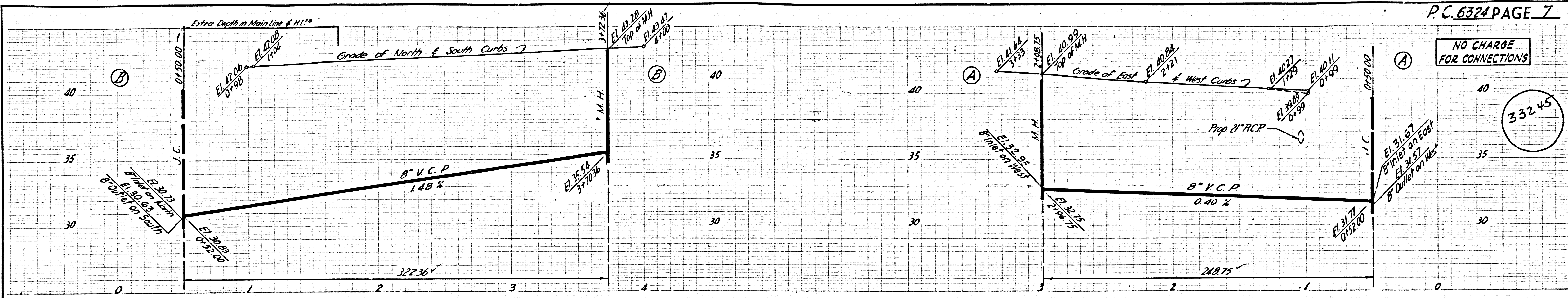
33244



TRACT NO. 240	239	238	237	236	235	234	233	232	231	230	229	228	227	27056
	15+00.0 y=14780	15+54.0 y=15380	16+10.0 y=16000	16+65.0 y=16620	17+19.0 y=17240	17+75.0 y=17860	18+30.0 y=18480	18+84.0 y=19100	19+40.0 y=19720	19+95.0 y=20340	20+51.0 y=20960	20+82.0 y=21580	20+92.0 y=22200	
	55	55	55	55	55	55	55	55	55	55	55	55	55	55
	169TH STREET													
	Curb Line													
	6" H.L.													
	8" V.C.P. Sewer													
	Grade of North & South Curb													
	M.H.													
	Elevations and Y-coordinates													
	14+31.0 y=14800	15+38.0 y=15365	15+94.0 y=15930	16+49.0 y=16495	17+05.0 y=17060	17+61.0 y=17625	18+14.0 y=18190	18+90.0 y=19100	19+90.0 y=20010	20+54.0 y=20920	20+54.0 y=20920	20+82.0 y=21580	20+92.0 y=22200	
	12	13	14	15	16	17	18	19	20	21	22	23	24	
TRACT NO.														

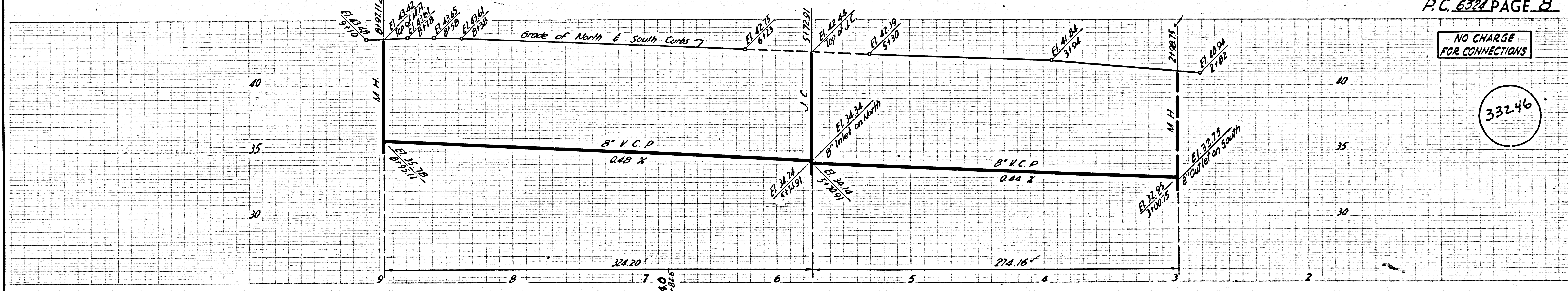
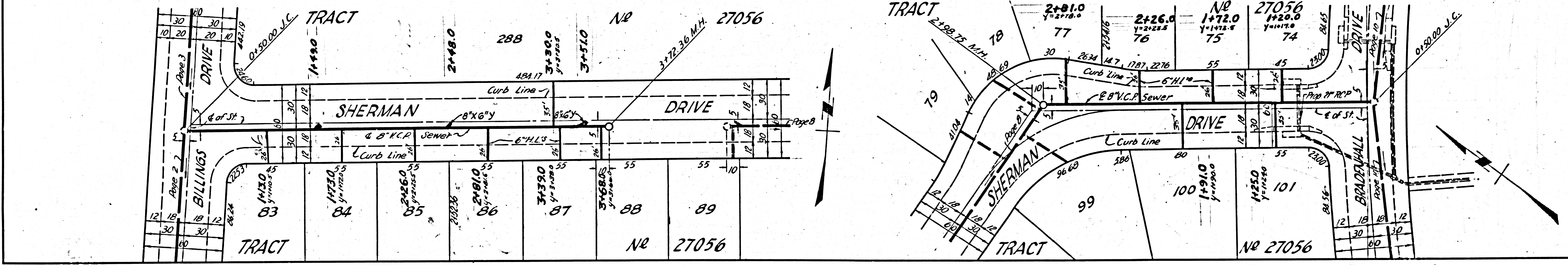


TRACT NO. 5102 & 5137



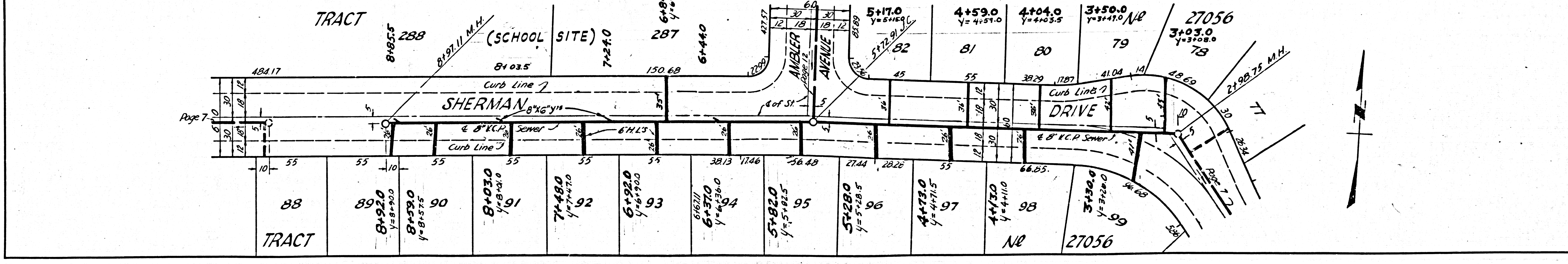
NO CHARGE FOR CONNECTIONS

33245



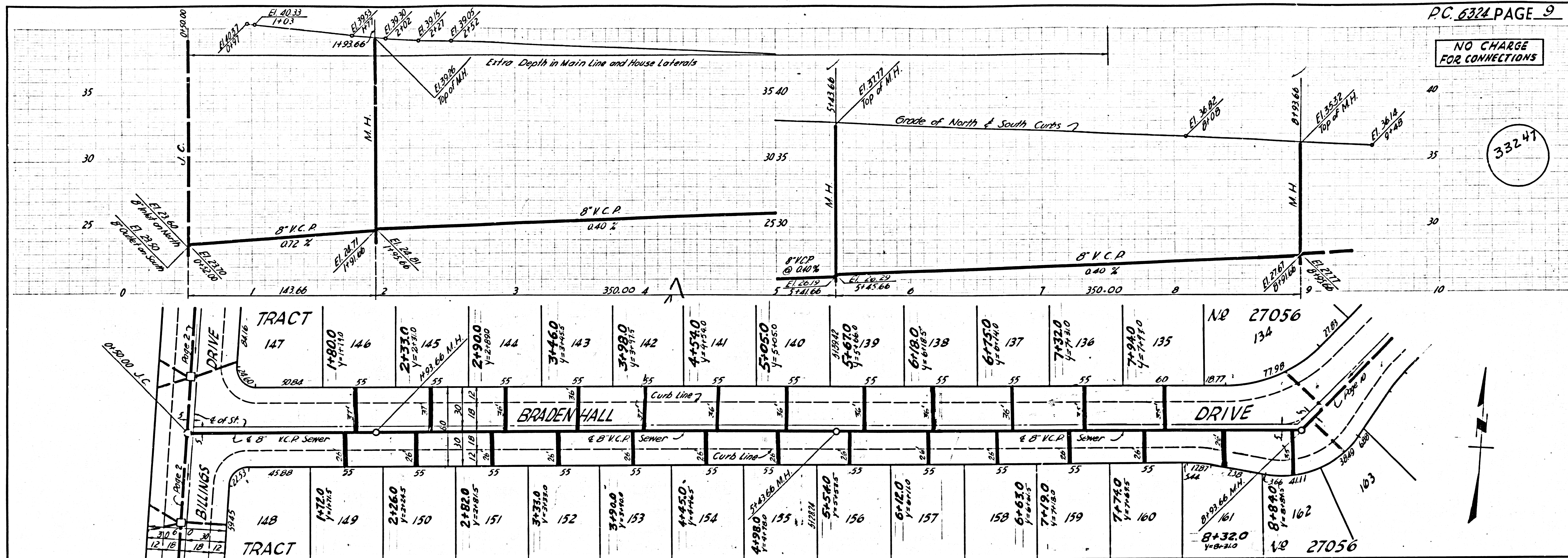
NO CHARGE FOR CONNECTIONS

33246



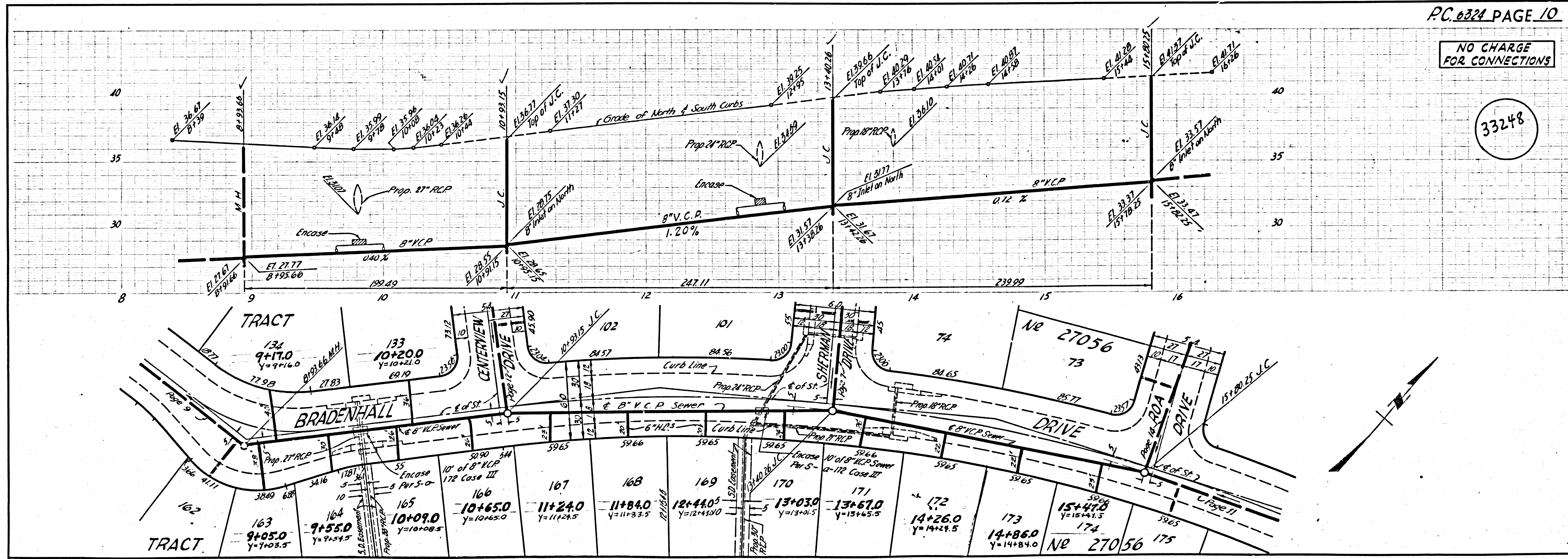
NO CHARGE FOR CONNECTIONS

33247



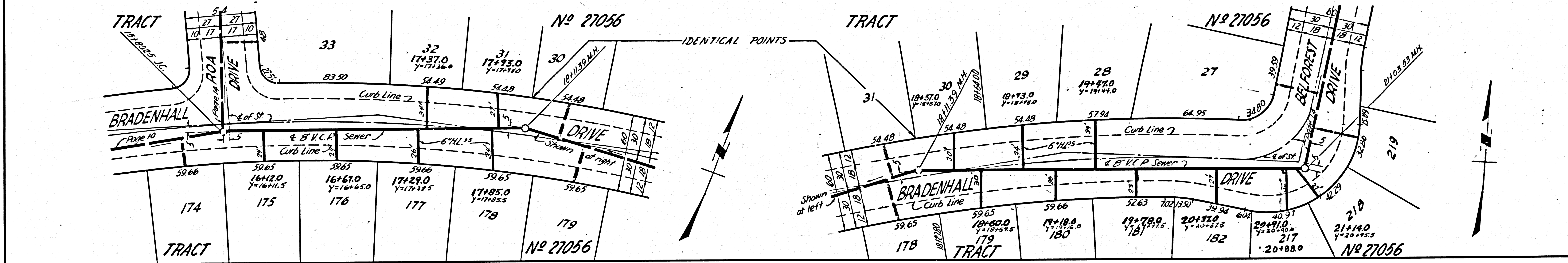
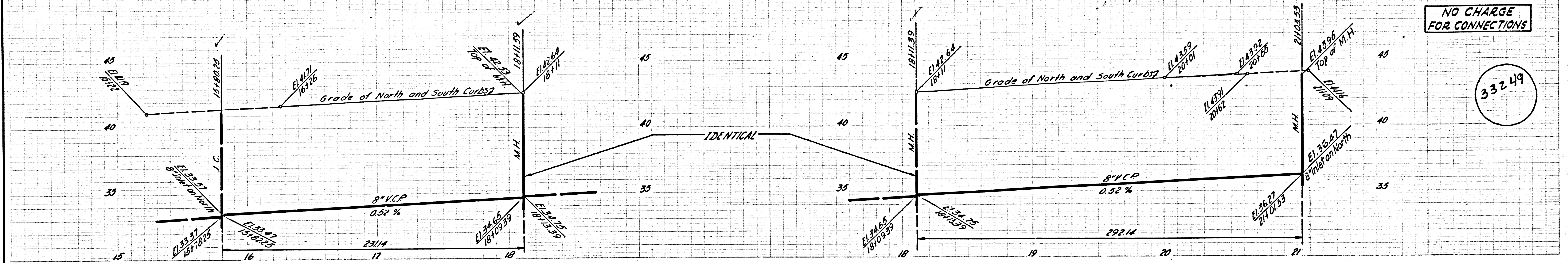
NO CHARGE FOR CONNECTIONS

33248



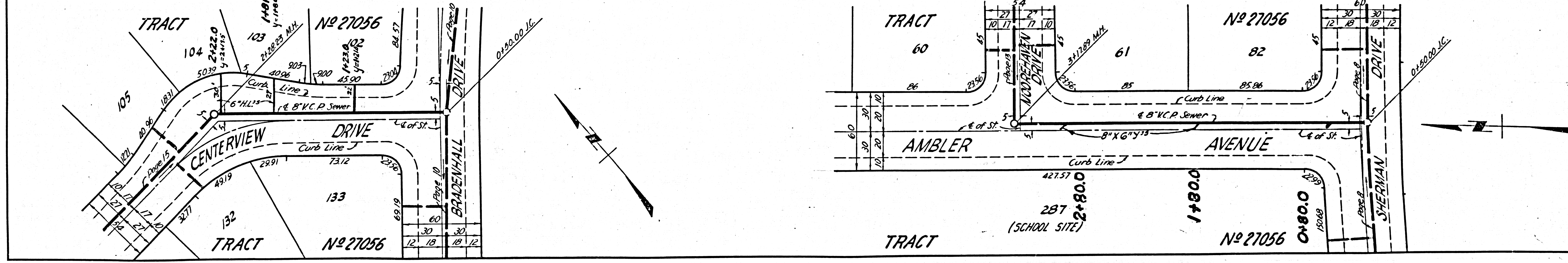
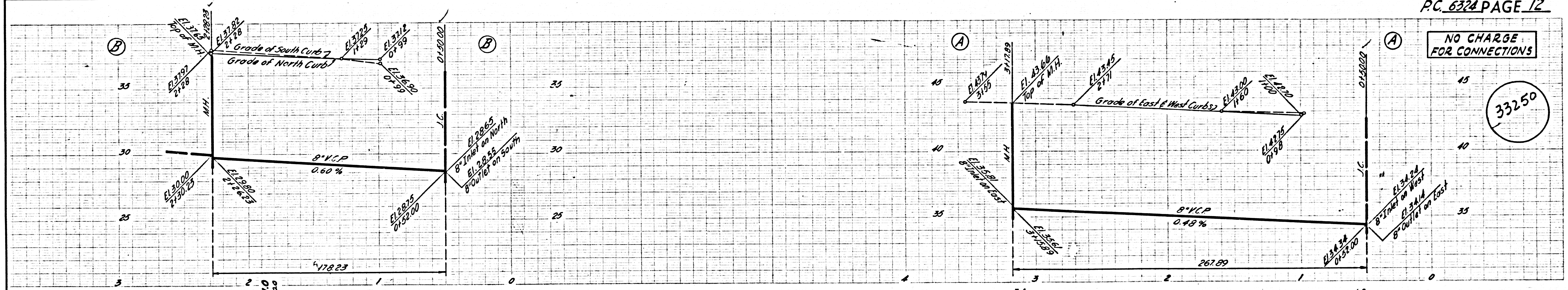
NO CHARGE FOR CONNECTIONS

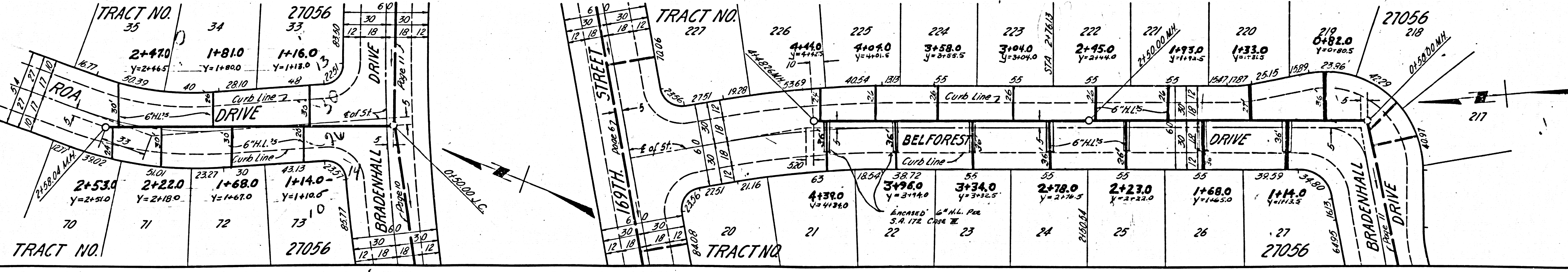
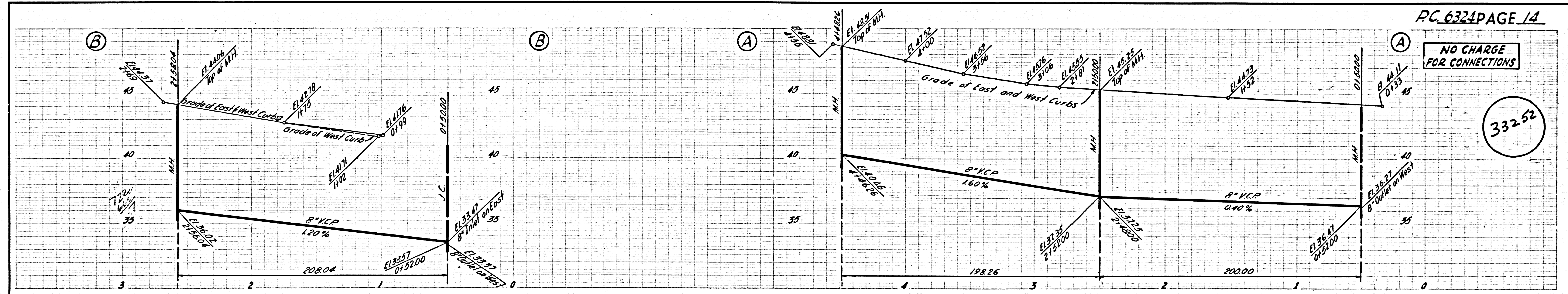
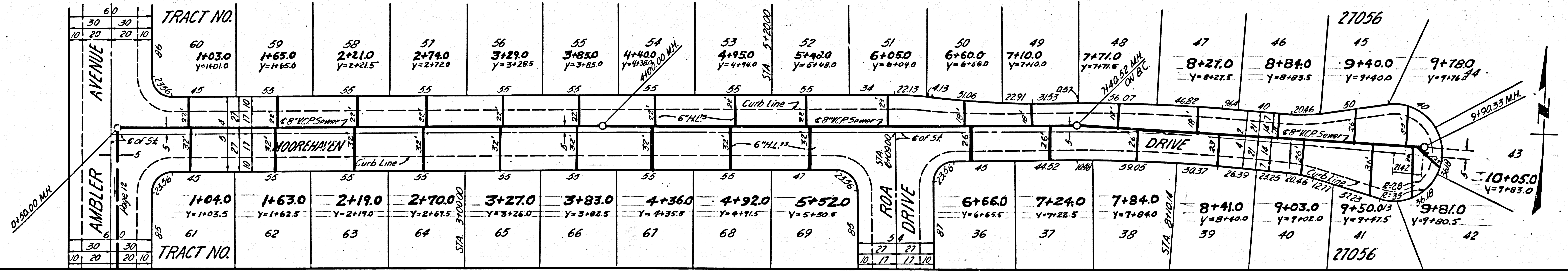
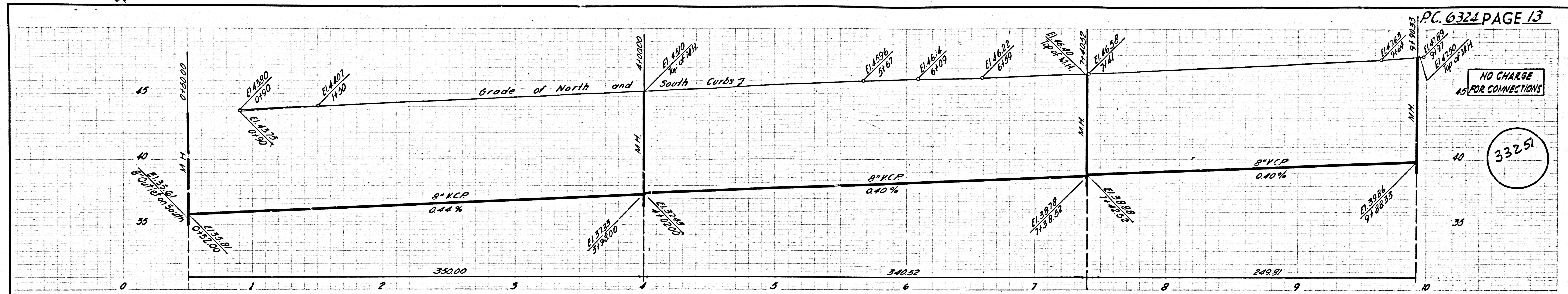
33249



NO CHARGE FOR CONNECTIONS

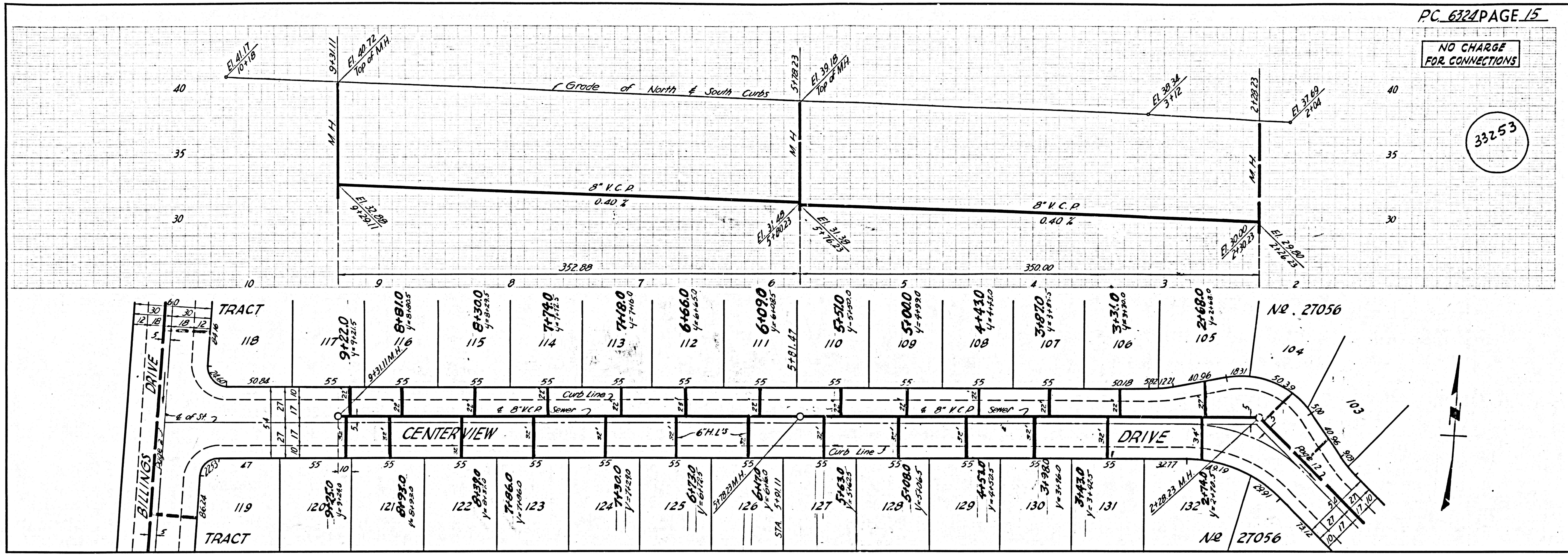
33250





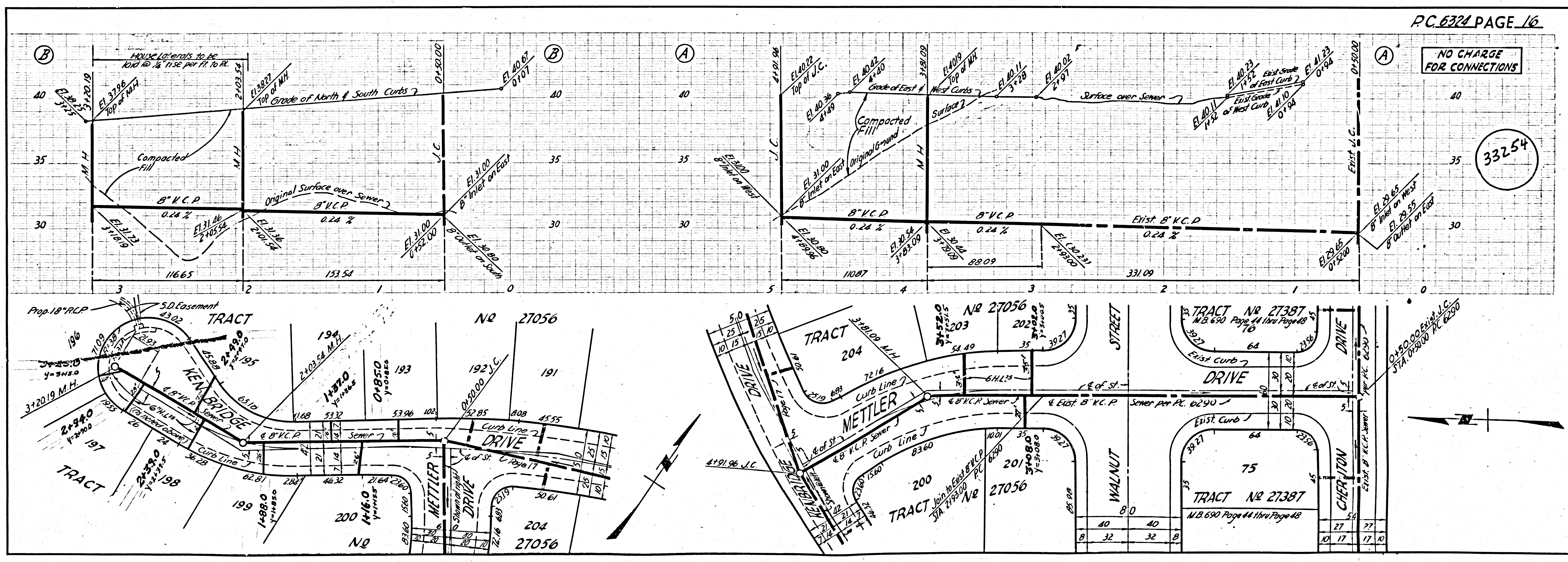
NO CHARGE FOR CONNECTIONS

33253



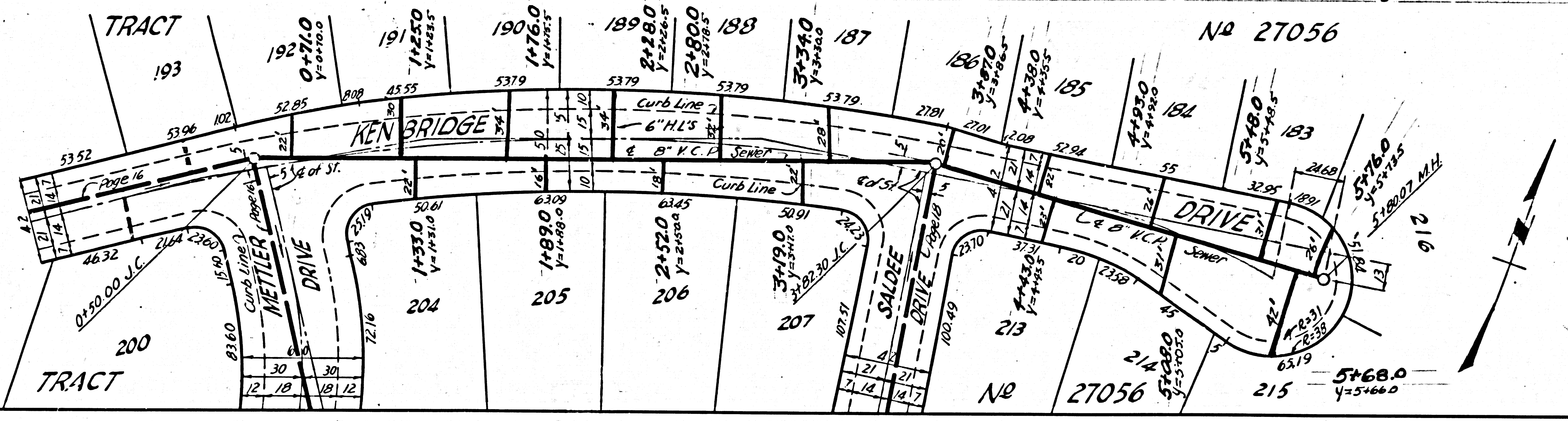
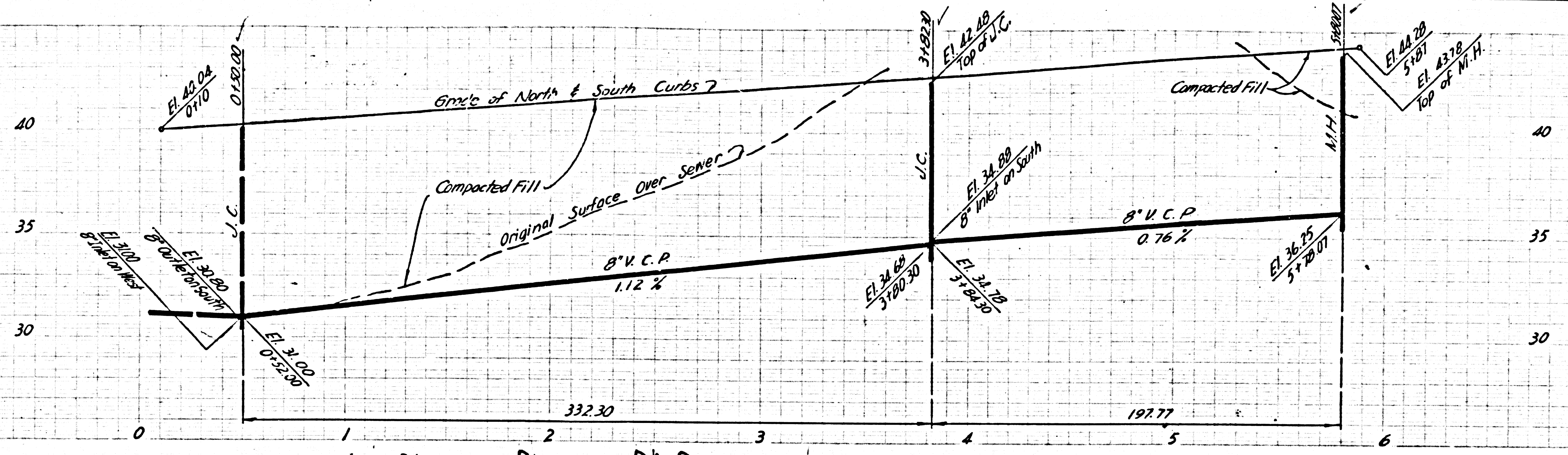
NO CHARGE FOR CONNECTIONS

33254



NO CHARGE FOR CONNECTIONS

33255



NO CHARGE FOR CONNECTIONS

33256

