

PUENTE BLDG. DIST. NO. 2

PROFILE ALIGNMENT AND GRADE OF P.C. 6326  
 SANITARY SEWERS PAGE 1  
 TO BE CONSTRUCTED IN U.M. 0358.07

TRACT N° 27345

PRIVATE CONTRACT NO. 6326

W.S. 37  
 1 SHEETS; 2 PAGES

SCALE: VERT. 1"=4' AUGUST, 1962  
 HORIZ. 1"=40'  
 PREPARED IN THE OFFICES OF

KEMMERER ENGR. CO. INC.  
 Robert R. Flores  
 REG. C. E. NO. 11342

FOR LEGEND SEE PLAN NO. S-A-64

- NOTES:
- PROVIDE STAKES ON THE PROPERTY LINE OR PROPERTY LINES PRODUCED AT RIGHT ANGLES TO THE SEWER LINE AT THE CENTER LINE OF EACH MANHOLE.
  - NO REPRESENTATIVE OF THE COUNTY ENGINEER WILL SURVEY OR LAY OUT ANY PORTION OF THE WORK.
  - THE OWNER OR HIS AUTHORIZED REPRESENTATIVE SHALL FURNISH THE COUNTY ENGINEER WITH GRADE SHEETS AND STATIONING FOR ALL HOUSE LATERALS AND Y BRANCHES AND SHALL PROVIDE STAKES FOR THEM AT THEIR PROPER LOCATIONS WITH STATIONING PLAINLY MARKED. ANY CHANGE IN LOCATION SHALL BE REQUESTED IN WRITING BY THE OWNER OR HIS REPRESENTATIVE.
  - THE PRIVATE ENGINEER SHALL FURNISH THE HOUSE LATERAL DEPTH AT THE PROPERTY LINE BELOW THE TOP OF CURB ELEVATION FOR EACH HOUSE LATERAL ON THE GRADE SHEET.
  - NO REVISIONS SHALL BE MADE IN THESE PLANS WITHOUT THE APPROVAL OF THE COUNTY ENGINEER.
  - USE STANDARD MANHOLE FRAMES AND COVERS, S=11T, HEIGHT AS NOTED.
  - USE EXTRA STRENGTH PIPE. ALL PIPE IS STANDARD DEPTH.
  - USE MECHANICAL COMPRESSION JOINTS FOR ALL V-CUR JOINTS AT MANHOLE PER SPCS. SEC. 36, 40 & 49.
  - RESURFACE ALL TRENCH WITHIN PAVED AREA TO MEET L.A. COUNTY ROAD DEPT. OR CALIF. STATE HIGHWAY REQUIREMENTS IN ACCORDANCE WITH PERMITS.
  - ENCASE FOUR FEET OF SEWER AT POINTS OF INTERFERENCE WITH POLES, CASE III, S=172.
  - HOUSE LATERALS TO BE CONSTRUCTED WITH INVERTS AT PROPERTY LINE 2 FEET BELOW CURB GRADE EXCEPT AS NOTED.
  - ALL STRUCTURES SHALL BE CONSTRUCTED PER THE PERMITS CONCERNING MANHOLES PER S-A-135 COUNTY ENGINEER.
  - FOR ALLOWABLE LEAKAGE TEST USE FORMULA NO. 1, SPCS. SEC. 84.
  - MANHOLE TOPS IN UNIMPROVED RIGHTS-OF-WAY TO BE SIX INCHES ABOVE FINISHED GRADE.
  - THE CONTRACTOR SHALL NOTIFY THE CONSTRUCTION DIVISION BY TELEPHONE, MADISON 9-474, EXT. 0-84 AT LEAST TWENTY-FOUR HOURS BEFORE STARTING ANY WORK UNDER THIS CONTRACT.
  - STANDARD SPECIFICATIONS DATED MAY 25, 1962 APPLY IN THE CONSTRUCTION OF THIS PROJECT.
  - ALL STATE AND LOCAL TRENCH SAFETY ORDERS WILL BE RIGIDLY ENFORCED.
  - ALL HOUSE LATERALS SHALL BE CONSTRUCTED IN A STRAIGHT ALIGNMENT AT RIGHT ANGLES FROM THE MAIN LINE SEWER EXCEPT AS SHOWN ON THE PLANS.

NO CONNECTIONS FOR THE DISPOSAL OF INDUSTRIAL WASTES SHALL BE MADE TO SEWERS SHOWN ON THESE DRAWINGS WITHOUT WRITTEN PERMISSION FROM THE CHIEF ENGINEER AND GENERAL MANAGER OF THE COUNTY SANITATION DISTRICTS.

NO CHARGE FOR CONNECTIONS

Robert V. Dimall

NOTE:  
 GRADES TO WHICH THIS IMPROVEMENT IS TO BE CONSTRUCTED ARE SHOWN ON PLANS AND PROFILE GRADE POINTS FOR TOP OF CURB, CENTER LINE OF STREETS OR CENTER LINE OF ALLEYS ARE SHOWN BY CIRCLES ON PROFILES. AT ALL POINTS BETWEEN DESIGNATED POINTS THE GRADE SHALL BE ESTABLISHED SO AS TO CONFORM TO A STRAIGHT LINE DRAWN BETWEEN SAID DESIGNATED POINTS.  
 ELEVATIONS ARE IN FEET ABOVE U.S.C. & G.S. SEA LEVEL DATUM OF 1929.  
 THIS DRAWING AND THE DATA HEREON ARE HEREBY MADE A PART OF THE SPECIFICATIONS.  
 BEFORE WORK CAN BE STARTED, THE CONTRACTOR MUST OBTAIN A PERMIT TO EXCAVATE IN COUNTY STREETS FROM THE L.A. COUNTY ROAD DEPT. DISTRICT OFFICE NO. 1 AND PAY A FEE OF \$50. THE COUNTY ENGINEER, ROOM 310 L.A. COUNTY BLDG. 2120 W. 12TH ST. SUFFICIENT TO COVER THE COST OF CONSTRUCTION INSPECTION AND RECORD PLANS.  
 APPROVAL OF THIS PLAN BY THE COUNTY OF LOS ANGELES DOES NOT CONSTITUTE A REPRESENTATION AS TO THE ACCURACY OF THE LOCATION OF OR THE EXISTENCE OR NON-EXISTENCE OF ANY UNDERGROUND UTILITY PIPE, OR STRUCTURE WITHIN THE LIMITS OF THIS PROJECT. THIS NOTE APPLIES TO ALL PAGES.  
 IF WORK IS TO BE DONE IN A STATE HIGHWAY, A PERMIT MUST BE OBTAINED FROM THE STATE OF CALIFORNIA, DIVISION OF HIGHWAYS, 120 SOUTH SPRING STREET.

COUNTY OF LOS ANGELES, CALIFORNIA

APPROVED, JOHN A. LAMBE, COUNTY ENGINEER APPROVED, J.D. BARNHURST, CHIEF ENGINEER

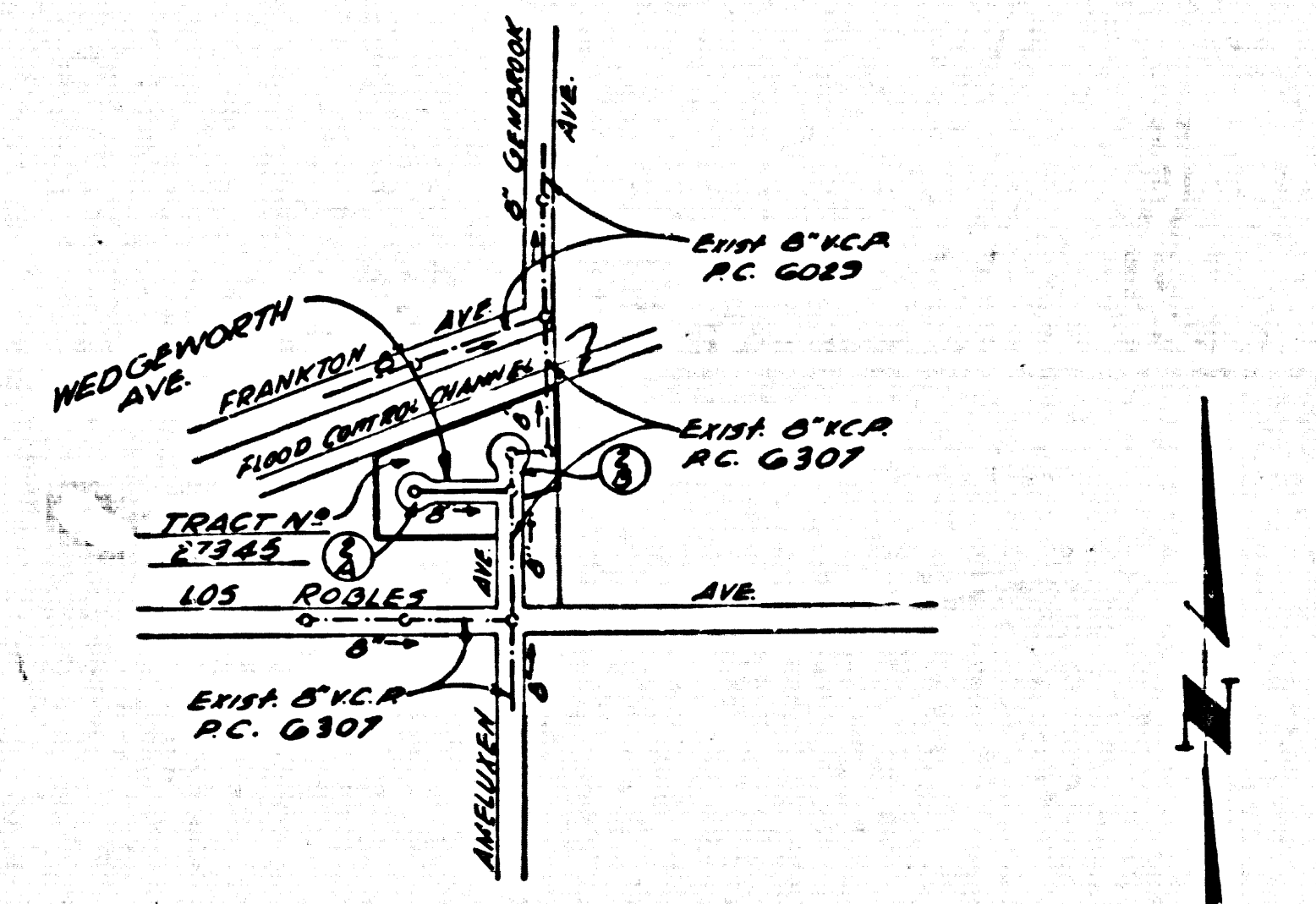
By Robert R. Flores, 1962, SANITATION ENGINEER By J.D. Barnhurst, 1962, CHIEF ENGINEER

CHECKED BY: R.K. Ouda 10-19-62 OFFICE ENGINEER

OFFICE OF COUNTY ENGINEER, REG. C. E. NO. 2406

SUBMITTED: W.C. Ponder, 10-18-62 SAN DIMAS REGIONAL ENGINEER

NOTE:  
 The Existence And Approximate Location of Underground Utilities or Structures Shown on These Plans Were Determined by a Search of The Available Public Records. To The Best of Our Knowledge There Are No Existing Underground Utilities or Structures Except as Shown on This Map.  
 The Contractor is Required to Take Due Precautionary Measures to Protect The Utilities or Structures Shown and Any Other Utilities or Structures of The Site. It Shall be The Contractor's Responsibility to Notify The Owners of The Utilities or Structures Concerned Before Starting Work.

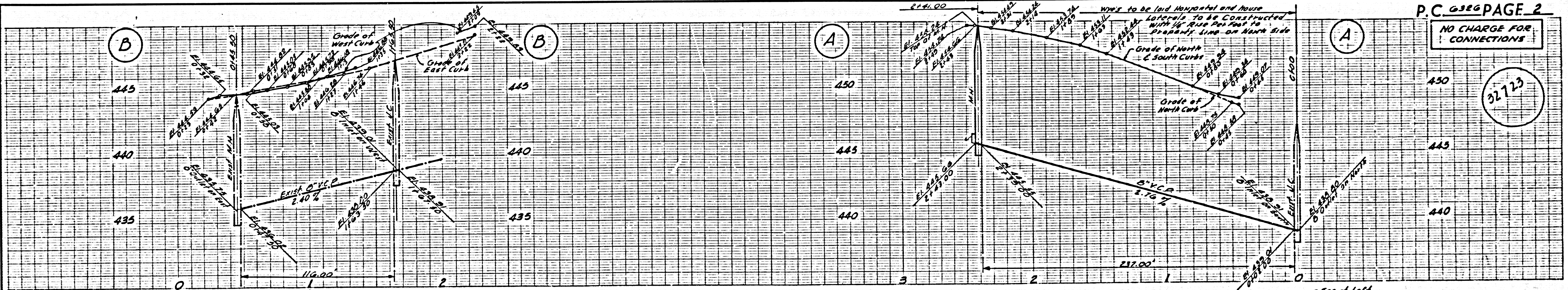


INDEX MAP  
 TRACT N° 27345  
 P.C. 6326  
 SCALE: 1"=600'

BENCH MARK:  
 -5.0, 1335-  
 CO. SURVEYOR BRASS MON.  
 IN WELL 10" DIA. @ OR NEAR E.  
 INT. OF 7th ST. & LOS ROBLES AVE.  
 ELEV. 443.194  
 WHITTIER QUAD 1333

NOTE:  
 LOTS 1, 2 & 4 AS SHOWN ON P.C. 6307, PAGE E-A.

DO NOT ISSUE HOUSE LATERAL PERMITS UNTIL P. C. 6307 IS ACCEPTED.



P.C. 6326 PAGE 2  
 NO CHARGE FOR CONNECTIONS

