

BENCH MARK
 37 3998-A P.D. L.A. CO. RD. DEPT. MONU @ 54 INT. IMPERIAL HWY.
 1 FIRST AVE. 10' D.P. IN CAST IRON WELL ELEV. = 300.087
 (LA MIRADA QUAD. 1955)

NORWALK BLDG. DIST. NO. 4.2

PROFILE ALIGNMENT AND GRADE OF **P.C. 6329**

SANITARY SEWERS PAGE 1

TO BE CONSTRUCTED IN **JN. 0358-90**

TRACT NO. 26859

PRIVATE CONTRACT NO. 6329

W.S. 34

1 SHEETS; 2 PAGES

SCALE: VERT. 1" = 4' AUGUST 9, 1962
 HORIZ. 1" = 40' PREPARED IN THE OFFICES OF

MCINTIRE & QUIROS INC.

By: *Alan Murray* REG. C. E. NO. 9548

FOR LEGEND SEE PLAN NO. S-A-64

NOTE:
 GRADES TO WHICH THIS IMPROVEMENT IS TO BE CONSTRUCTED ARE SHOWN ON PLANS AND PROFILES. GRADE POINTS FOR TOP OF CURBS, CENTER LINE OF STREETS OR CENTER LINE OF ALLEYS ARE SHOWN BY CIRCLES ON PROFILES. AT ALL POINTS BETWEEN DESIGNATED POINTS THE GRADE SHALL BE ESTABLISHED SO AS TO CONFORM TO A STRAIGHT LINE DRAWN BETWEEN SAID DESIGNATED POINTS.
 ELEVATIONS ARE IN FEET ABOVE U.S.C. & G.S. SEA LEVEL DATUM OF 1929.
 THIS DRAWING AND THE DATA HEREON ARE HEREBY MADE A PART OF THE SPECIFICATIONS.
 WORK SHALL BE CONSTRUCTED ACCORDING TO SPECIFICATIONS ON FILE IN THE OFFICE OF THE COUNTY ENGINEER AND SHALL BE PROSECUTED ONLY IN THE PRESENCE OF THE COUNTY ENGINEER.
 BEFORE WORK CAN BE STARTED, THE CONTRACTOR MUST OBTAIN A PERMIT TO EXCAVATE IN COUNTY STREETS FROM THE L.A. COUNTY ROAD DEPT., DISTRICT OFFICE NO. 4, AND PAY A FEE TO THE COUNTY ENGINEER, ROOM 310 COUNTY ENGINEER BLDG., JOB IN SECOND ST. SUBSEQUENT TO COVER THE COST OF CONSTRUCTION INSPECTION AND RECORD PLANS.
 APPROVAL OF THIS PLAN BY THE COUNTY OF LOS ANGELES DOES NOT CONSTITUTE A REPRESENTATION AS TO THE ACCURACY OF THE LOCATION OF OR THE EXISTENCE OR NON-EXISTENCE OF ANY UNDERGROUND UTILITY PIPE, OR STRUCTURE WITHIN THE LIMITS OF THIS PROJECT. THIS NOTE APPLIES TO ALL PAGES.
 IF WORK IS TO BE DONE IN A STATE HIGHWAY, A PERMIT MUST BE OBTAINED FROM THE STATE OF CALIFORNIA, DIVISION OF HIGHWAYS, 120 SOUTH SPRING STREET.

COUNTY OF LOS ANGELES, CALIFORNIA

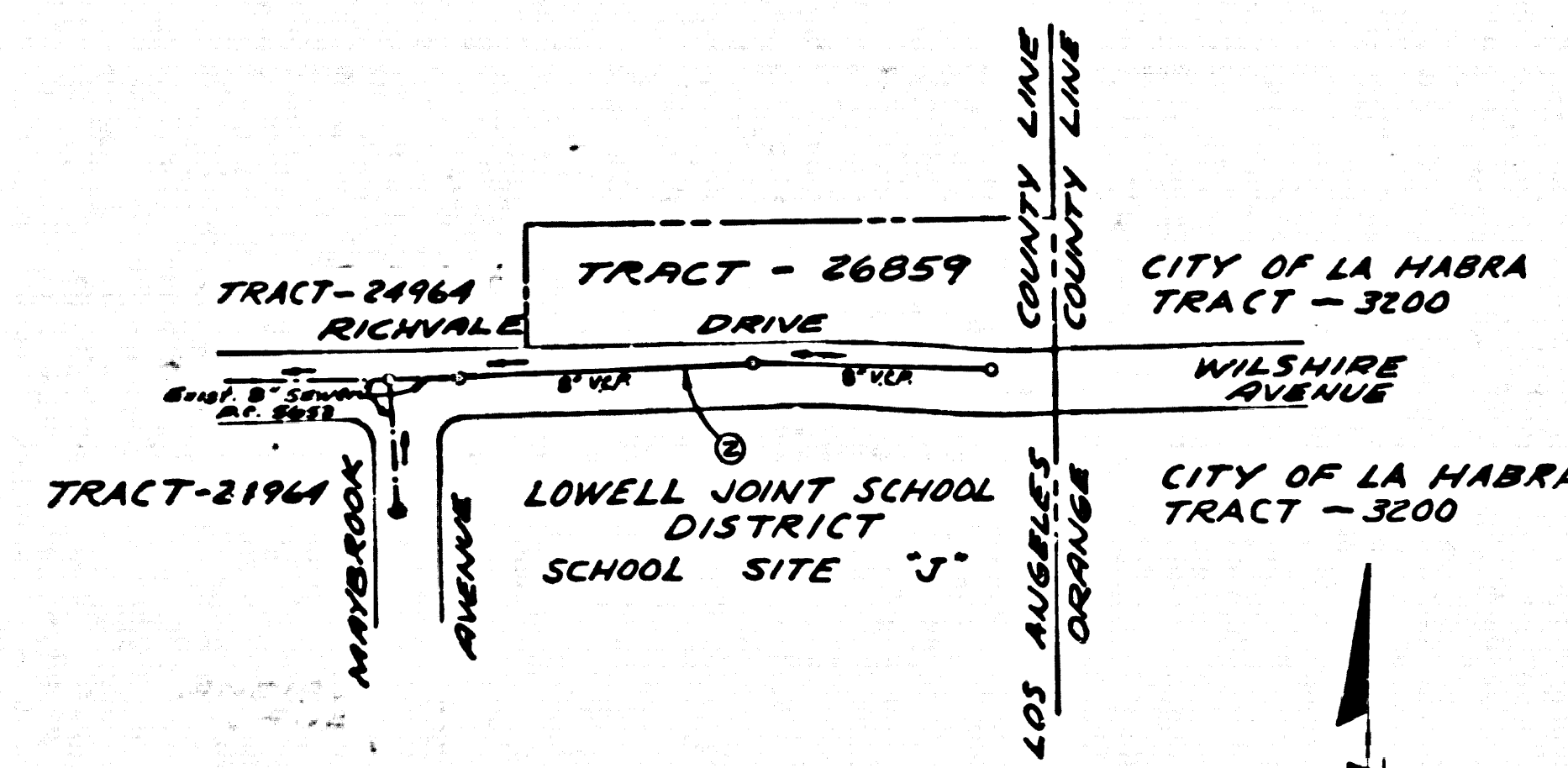
APPROVED, JOHN A. LAMBIE, COUNTY ENGINEER APPROVED, J.D. PARK WILSON, CHIEF ENGINEER

By: *John A. Lambie* ASST. SANITATION ENGINEER By: *J.D. Park Wilson* CHIEF ENGINEER

CHECKED BY: *St. Quid* 10-16-62

OFFICE OF COUNTY ENGINEER, REG. C. E. NO. 9496

SUBMITTED BY: *John J. Ester* 10-15-62
 LOS ANGELES REGIONAL ENGINEER, REG. C. E. NO. 3871



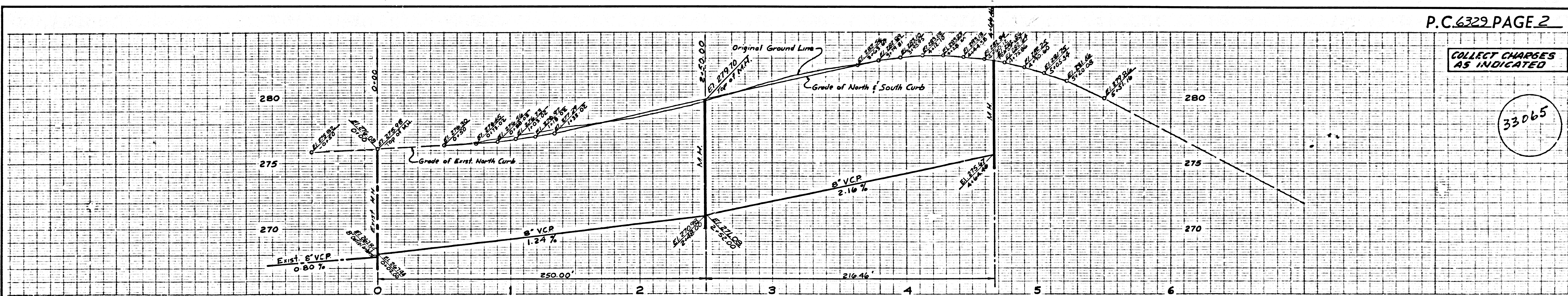
INDEX MAP
TRACT No. 26859
 SCALE: 1" = 200'
 P.C. 6329
 J.A. 0358.90

NOTE:
 NUMBERS IN CIRCLES INDICATE PAGE NUMBERS

- NOTES:**
1. PROVIDE STAKES ON THE PROPERTY LINE OR PROPERTY LINES PRODUCED AT RIGHT ANGLES TO THE SEWER LINE AT THE CENTER LINE OF EACH MANHOLE.
 2. NO REPRESENTATIVE OF THE COUNTY ENGINEER WILL SURVEY OR LAY OUT ANY PORTION OF THE WORK.
 3. THE OWNER OR HIS AUTHORIZED REPRESENTATIVE SHALL FURNISH THE COUNTY ENGINEER WITH GRADE SHEETS AND STATIONING FOR ALL HOUSE LATERALS AND Y BRANCHES AND SHALL PROVIDE STAKES FOR THEM AT THEIR PROPER LOCATIONS WITH STATIONING PLAINLY MARKED. ALL HOUSE LATERALS SHALL BE CONSTRUCTED IN A STRAIGHT ALIGNMENT AT RIGHT ANGLES FROM THE MAIN LINE SEWER. ANY CHANGE IN ALIGNMENT SHALL BE REQUESTED IN WRITING BY THE PRIVATE ENGINEER.
 4. NO REVISIONS SHALL BE MADE IN THESE PLANS WITHOUT THE APPROVAL OF THE COUNTY ENGINEER.
 5. USE STANDARD MANHOLE FRAMES AND COVERS, S-117.
 6. USE EXTRA STRENGTH PIPE. ALL PIPE IS STANDARD DEPTH.
 7. USE CEMENT MORTAR OR MECHANICAL COMPRESSION JOINTS FOR ALL V.C.P. PER SPECS, SECS. 36 & 48, FOR MAIN LINE ONLY.
 8. RESURFACE ALL TRENCH WITHIN PAVED AREA TO MEET L.A. COUNTY ROAD DEPT. OR CALIF. STATE HIGHWAY REQUIREMENTS IN ACCORDANCE WITH PERMITS.
 9. ENCASE FOUR FEET OF SEWER AT POINTS OF INTERFERENCE WITH POLES, CASE III, S-117.
 10. HOUSE LATERALS TO BE CONSTRUCTED WITH INVERTS AT PROPERTY LINE 6 FEET BELOW CURB GRADE EXCEPT AS NOTED.
 11. ALL STRUCTURES SHALL BE BRICK SEWER STRUCTURES, S-104. PRECAST CONCRETE MANHOLES PER S.O. 135 OR S.O. 173 MAY BE USED AS AN ALTERNATE TO LOCATIONS APPROVED BY THE COUNTY ENGINEER.
 12. FOR ALLOWABLE LEAKAGE TEST USE FORMULA NO. 1, SPECS, SEC. 40.
 13. MANHOLE TOPS IN UNIMPROVED RIGHTS-OF-WAY TO BE SIX INCHES ABOVE FINISHED GRADE.
 14. THE CONTRACTOR SHALL NOTIFY THE CONSTRUCTION DIVISION BY TELEPHONE, MADISON 3-477, EXT. B-551, AT LEAST TWENTY-FOUR HOURS BEFORE STARTING ANY WORK UNDER THIS CONTRACT.
 15. STANDARD SPECIFICATIONS DATED MAY 25, 1962, APPLY IN THE CONSTRUCTION OF THIS PROJECT.
 16. USE MECHANICAL COMPRESSION JOINTS FOR ALL HOUSE LATERALS PER SPECS SEC. 36 & 48.
 17. THE PRIVATE ENGINEER SHALL FURNISH THE HOUSE LATERAL DEPTH AT THE PROPERTY LINE BELOW THE TOP OF THE CURB ELEVATION FOR EACH HOUSE LATERAL ON THE GRADE SHEET.
 18. WHERE EVER GROUND WATER IS ENCOUNTERED DURING CONSTRUCTION OF THE SEWERS, THE V.C.P. JOINTS SHALL BE OF JOINT COMPOUND PER SPECS SEC. 33 & 48 OR MECHANICAL COMPRESSION JOINTS PER SPECS SEC. 36 & 48.
 19. ALL STATE & LOCAL TRENCH SAFETY ORDERS WILL BE RIGIDLY ENFORCED.

COLLECT CHARGES AS INDICATED
John J. Ester 10-9-62

NO CONNECTIONS FOR THE DISPOSAL OF INDUSTRIAL WASTES SHALL BE MADE TO SEWERS SHOWN ON THESE DRAWINGS WITHOUT WRITTEN PERMISSION FROM THE CHIEF ENGINEER AND GENERAL MANAGER OF THE COUNTY SANITATION DISTRICTS.



COLLECT CHARGES AS INDICATED

33065

