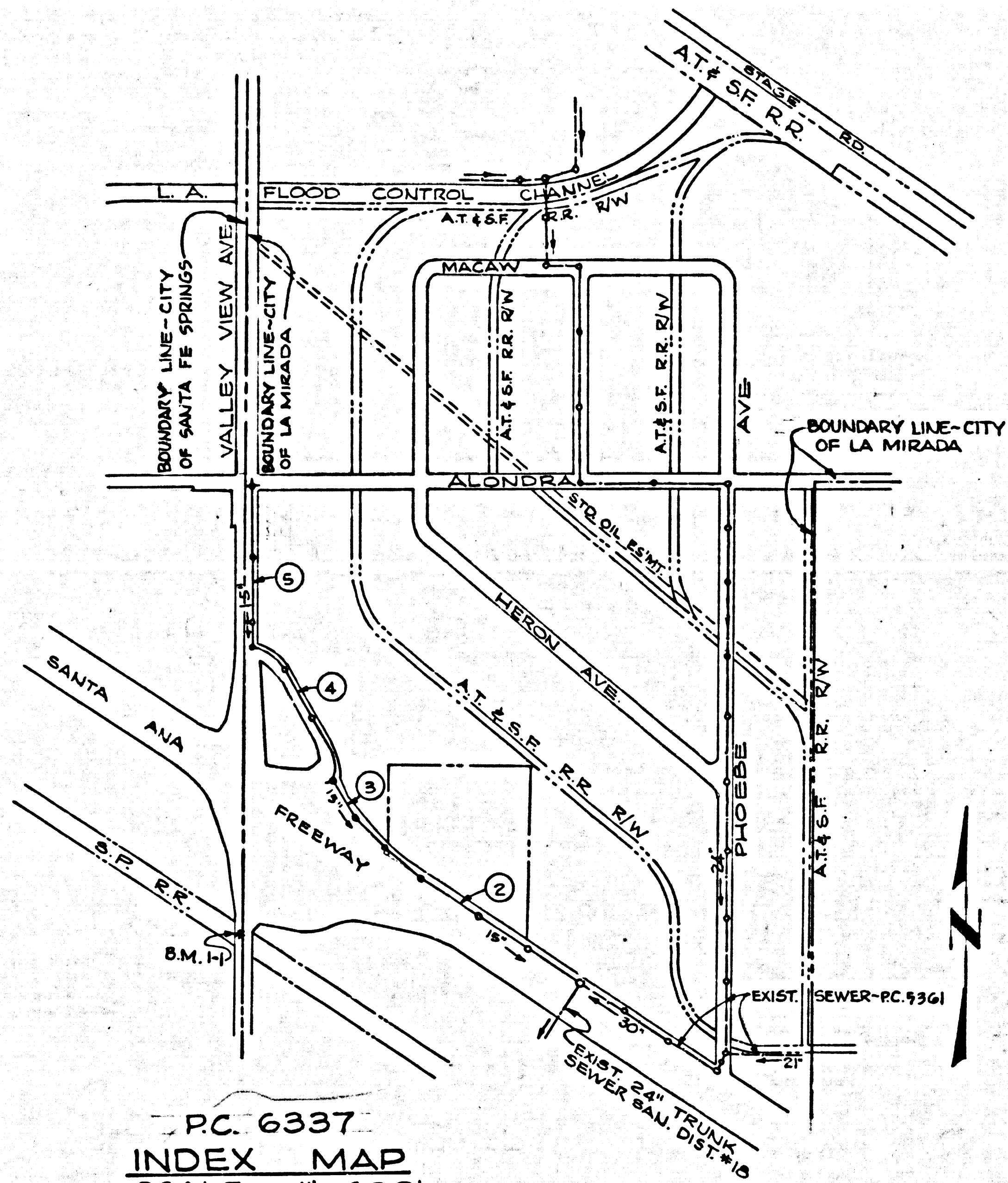


**BENCH MARK: 1-1**  
 STANDARD U.S.G.S DISK STAMPED "62-1914 63T33"  
 LOCATED ON WEST SIDE OF NORTH  
 CONCRETE HEADWALL ON NORTH SIDE  
 SOUTHERN PACIFIC RR. R/W 20' EAST OF E  
 OF VALLEY VIEW AVENUE  
 1952 ADJ.—ELEV. 66.431'  
 SUBTRACT 0.325' FROM ALL ELEVATIONS  
 TO AGREE WITH 1962 ADJ. ELEV. 60.106

**REVISION**  
 RELOCATE MANHOLE FROM 5+69.60 TO 5+80.00  
 RELOCATE MANHOLE ONE FOOT SOUTHERLY  
 FROM 5+80.00 TO 5+81.16 AND AN ADDITIONAL  
 FOOT SOUTHERLY FROM 5+81.16 TO 5+82.20  
 15+72.20 MANHOLE WESTERLY TO THE  
 EXISTING LOCATION AT 17+04.31  
 APPROVED BY *John D. Estlin* 1-29-63  
 OFFICE OF CITY ENGINEER



PC. 6337  
**INDEX MAP**  
 SCALE 1" = 600'

**LA MIRADA BLDG. DIST. NO. 4.08**

- NOTES:**
1. PROVIDE STAKES ON THE PROPERTY LINE OR PROPERTY LINES PRODUCED AT RIGHT ANGLES TO THE SEWER LINE AT THE CENTER LINE OF EACH MANHOLE.
  2. NO REPRESENTATIVE OF THE CITY ENGINEER WILL SURVEY OR LAY OUT ANY PORTION OF THE WORK.
  3. THE OWNER OR HIS AUTHORIZED REPRESENTATIVE SHALL FURNISH THE CITY ENGINEER WITH GRADE SHEETS AND STATIONING FOR ALL HOUSE LATERALS AND Y BRANCHES AND SHALL PROVIDE STAKES FOR THEM AT THEIR PROPER LOCATIONS WITH STATIONING PLAINLY MARKED. ANY CHANGE IN LOCATION SHALL BE REQUESTED IN WRITING BY THE OWNER OR HIS REPRESENTATIVE.
  4. THE PRIVATE ENGINEER SHALL FURNISH THE HOUSE LATERAL DEPTH AT THE PROPERTY LINE BELOW THE TOP OF CURB ELEVATION FOR EACH HOUSE LATERAL ON THE GRADE SHEET.
  5. NO REVISIONS SHALL BE MADE IN THESE PLANS WITHOUT THE APPROVAL OF THE CITY ENGINEER.
  6. USE STANDARD MANHOLE FRAMES AND COVERS, S-117, 12" OR AS NOTED.
  7. USE EXTRA STRENGTH PIPE, ALL PIPE IS STANDARD DEPTH EXCEPT AS NOTED.
  8. USE MECHANICAL COMPRESSION JOINTS FOR ALL V.C.P. JOINTS PER SPECS, SEC. 364 & 40.
  9. RESURFACE ALL TRENCH WITHIN PAVED AREA TO MEET L.A. COUNTY ROAD DEPT. OR CALIF. STATE HIGHWAY REQUIREMENTS IN ACCORDANCE WITH PERMITS.
  10. ENCASE FOUR FEET OF SEWER AT POINTS OF INTERFERENCE WITH POLES, CASE III, S-172.
  11. ALL STRUCTURES SHALL BE BRICK SEWER STRUCTURES, S-104, EXCEPT AS NOTED.
  12. FOR ALLOWABLE LEAKAGE TEST USE FORMULA NO. 1, SPECS, SEC. 54.
  13. MANHOLE TOPS IN UNIMPROVED RIGHTS-OF-WAY TO BE SIX INCHES ABOVE FINISHED GRADE.
  14. THE CONTRACTOR SHALL NOTIFY THE CONSTRUCTION DIVISION BY TELEPHONE, MADISON 9-4141, EXT. 251 AT LEAST TWENTY-FOUR HOURS BEFORE STARTING ANY WORK UNDER THIS CONTRACT.
  15. STANDARD SPECIFICATIONS DATED MAY 25, 1962 SHALL APPLY IN THE CONSTRUCTION OF THIS PROJECT.

16. ALL STATE AND LOCAL TRENCH SAFETY ORDERS WILL BE RIGIDLY ENFORCED.

NO CONNECTIONS FOR THE DISPOSAL OF INDUSTRIAL WASTES SHALL BE MADE TO SEWERS SHOWN ON THESE DRAWINGS AND BEFORE FINAL ACCEPTANCE OF THIS WORK, WITHOUT WRITTEN PERMISSION FROM THE CHIEF ENGINEER AND GENERAL MANAGER OF THE COUNTY SANITATION DISTRICT (DU 4-1281) SHALL BE NOTIFIED IN ORDER THAT REQUIRED INSPECTION CAN BE MADE.

**COLLECT CHARGES AS INDICATED**  
*M. W. W. 10-22-62*

**CENTRAL MANUFACTURING DISTRICT**  
**PRIVATE CONTRACT NO. 6337**

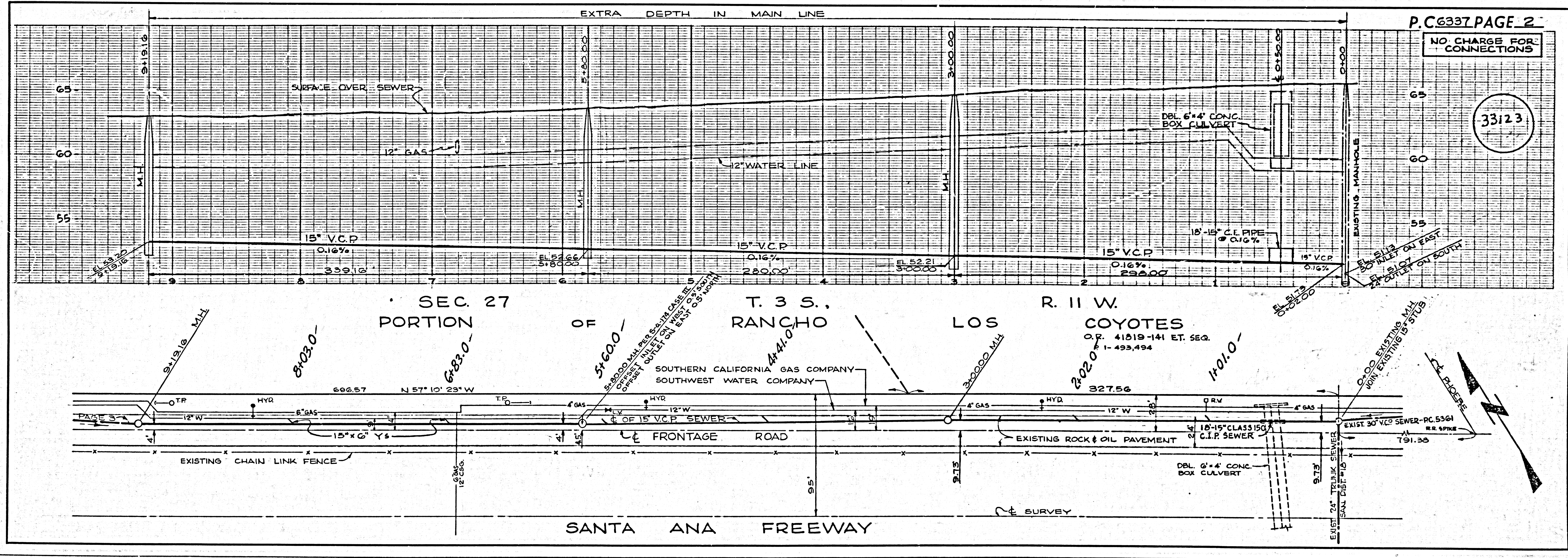
W.S. 34  
 3 SHEETS, 5 PAGES  
 SCALE: VERT. 1" = 4' AUGUST, 1962  
 HORIZ. 1" = 40'  
 PREPARED IN THE OFFICES OF  
**CENTRAL MANUFACTURING DISTRICT INC.**

BY *Arthur R. Cooke*  
 REG. C. E. NO. C.E. 7709  
 FOR LEGEND SEE PLAN NO. S-A-64

**NOTE:**  
 GRADES TO WHICH THIS IMPROVEMENT IS TO BE CONSTRUCTED ARE SHOWN ON PLANS AND PROFILES. GRADE POINTS FOR TOP OF CURBS, CENTER LINE OF STREETS, OR CENTER LINE OF ALLEYS ARE SHOWN BY CIRCLES ON PROFILES. AT ALL POINTS BETWEEN DESIGNATED POINTS THE GRADE SHALL BE ESTABLISHED SO AS TO CONFORM TO A STRAIGHT LINE DRAWN BETWEEN SAID DESIGNATED POINTS.  
 ELEVATIONS ARE IN FEET ABOVE U.S.C. & G.S. SEA LEVEL DATUM OF 1929.  
 THIS DRAWING AND THE DATA HEREON ARE HEREBY MADE A PART OF THE SPECIFICATIONS.  
 WORK SHALL BE CONSTRUCTED ACCORDING TO SPECIFICATIONS ON FILE IN THE OFFICE OF THE CITY ENGINEER AND SHALL BE PROSECUTED ONLY IN THE PRESENCE OF THE CITY ENGINEER.  
 BEFORE WORK CAN BE STARTED, THE CONTRACTOR MUST OBTAIN A PERMIT TO EXCAVATE IN CITY STREETS FROM THE L.A. COUNTY ROAD DEPT., DISTRICT OFFICE NO. 4, AND MAKE A DEPOSIT WITH THE CITY OF LA MIRADA, 1500 1/2 LUITWILER, SUFFICIENT TO COVER THE COST OF CONSTRUCTION INSPECTION AND RECORD PLANS.  
 APPROVAL OF THIS PLAN BY THE CITY OF LA MIRADA DOES NOT CONSTITUTE A REPRESENTATION AS TO THE ACCURACY OF THE LOCATION OF OR THE EXISTENCE OR NON-EXISTENCE OF ANY UNDERGROUND UTILITY PIPE, OR STRUCTURE WITHIN THE LIMITS OF THIS PROJECT. THIS NOTE APPLIES TO ALL PAGES.  
 IF WORK IS TO BE DONE IN A STATE HIGHWAY, A PERMIT MUST BE OBTAINED FROM THE STATE OF CALIFORNIA, DIVISION OF HIGHWAYS, 120 SOUTH BRING STREET.

**CITY OF LA MIRADA, CALIFORNIA**  
 APPROVED, JOHN A. LAMBIE, CITY ENGINEER APPROVED, J.D. PARKHURST, CHIEF ENGINEER  
 CO. SAN. DIST. NO. 12  
 BY *Robert E. Kulas* ASSISTANT SANITATION ENGINEER BY *W. J. Southworth* OFFICE ENGINEER  
 CHECKED BY *M. W. W.* 10-29-62  
 OFFICE OF CITY ENGINEER, REG. C. E. NO. 3405

SUBMITTED BY: *John D. Estlin* 10-22-62  
 LOS CERRITOS REGIONAL ENGINEER, REG. C. E. NO. 3871



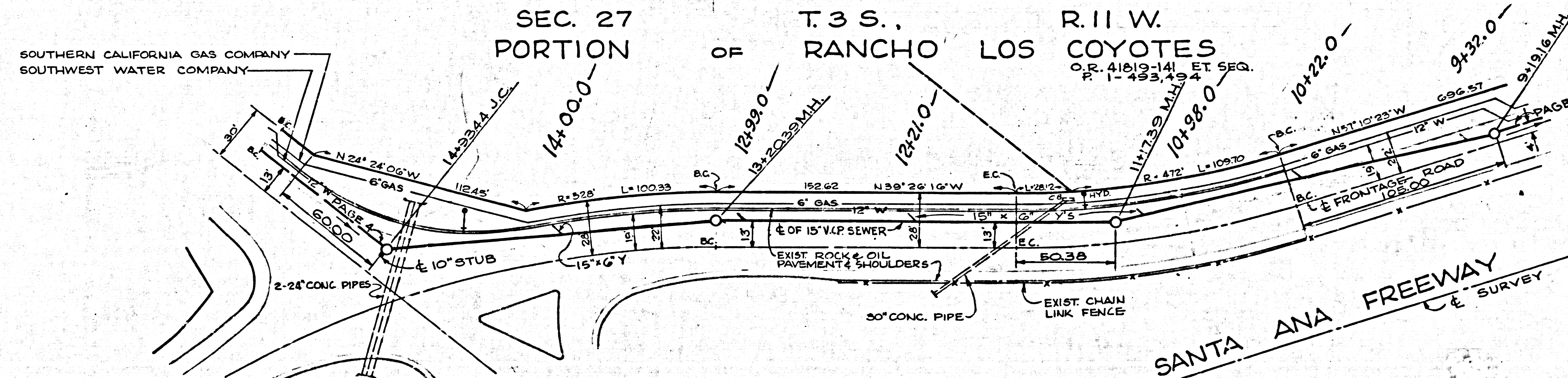
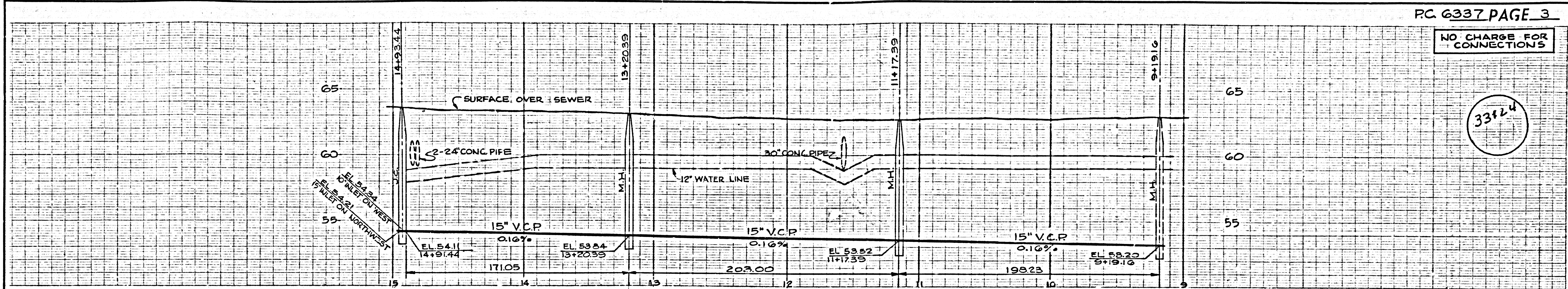
P.C. 6337 PAGE 2  
 NO CHARGE FOR CONNECTIONS

33123



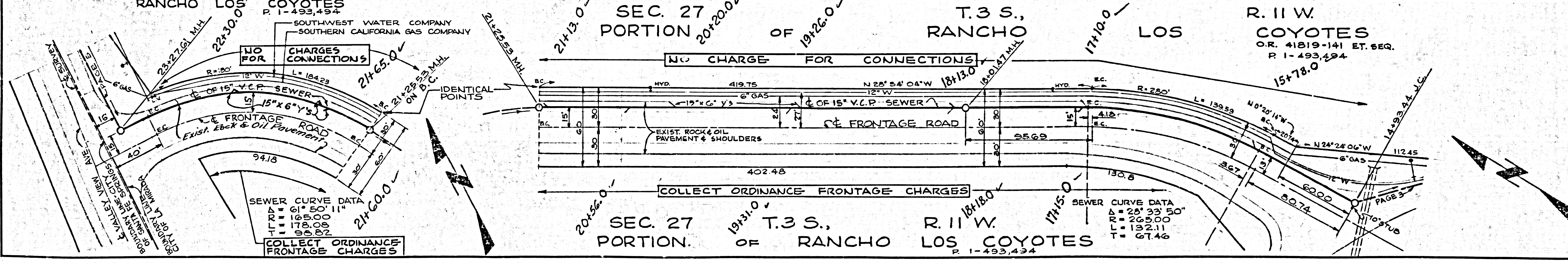
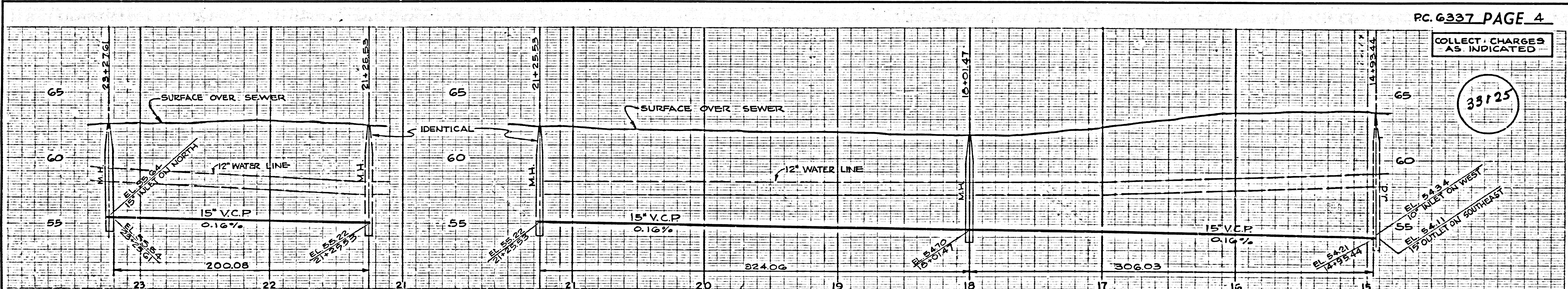
NO CHARGE FOR CONNECTIONS

33124



COLLECT CHARGES AS INDICATED

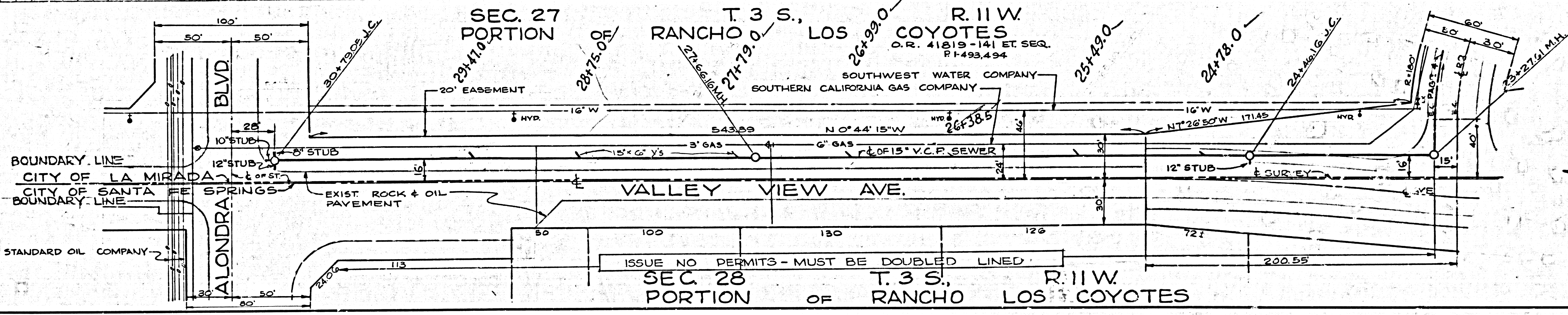
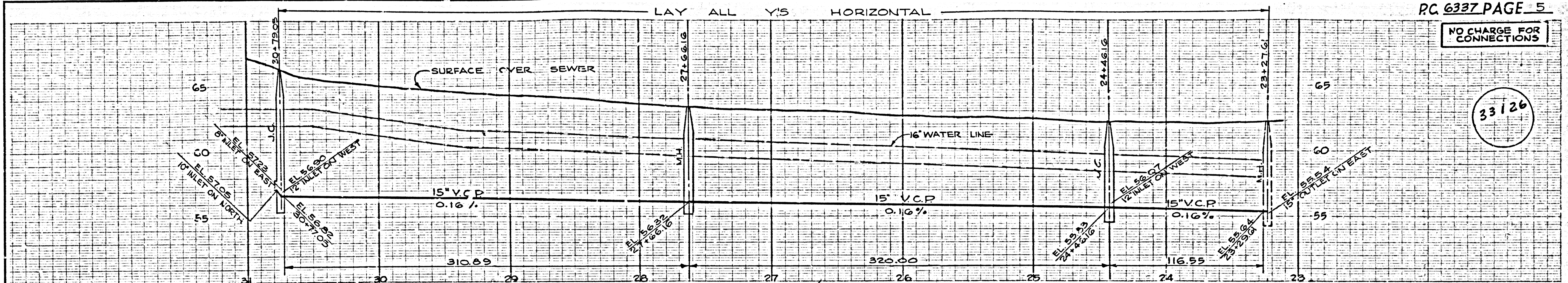
33125





NO CHARGE FOR CONNECTIONS

33126



S. & S. 198 L.A. COUNTY SEWER SHEET NO. 2 60. CAL. 84/1970 60

PC 6337 CENTRAL MFG DISTRICT