

P.C. 6338 W/4 W/4 LONGDEN AVENUE

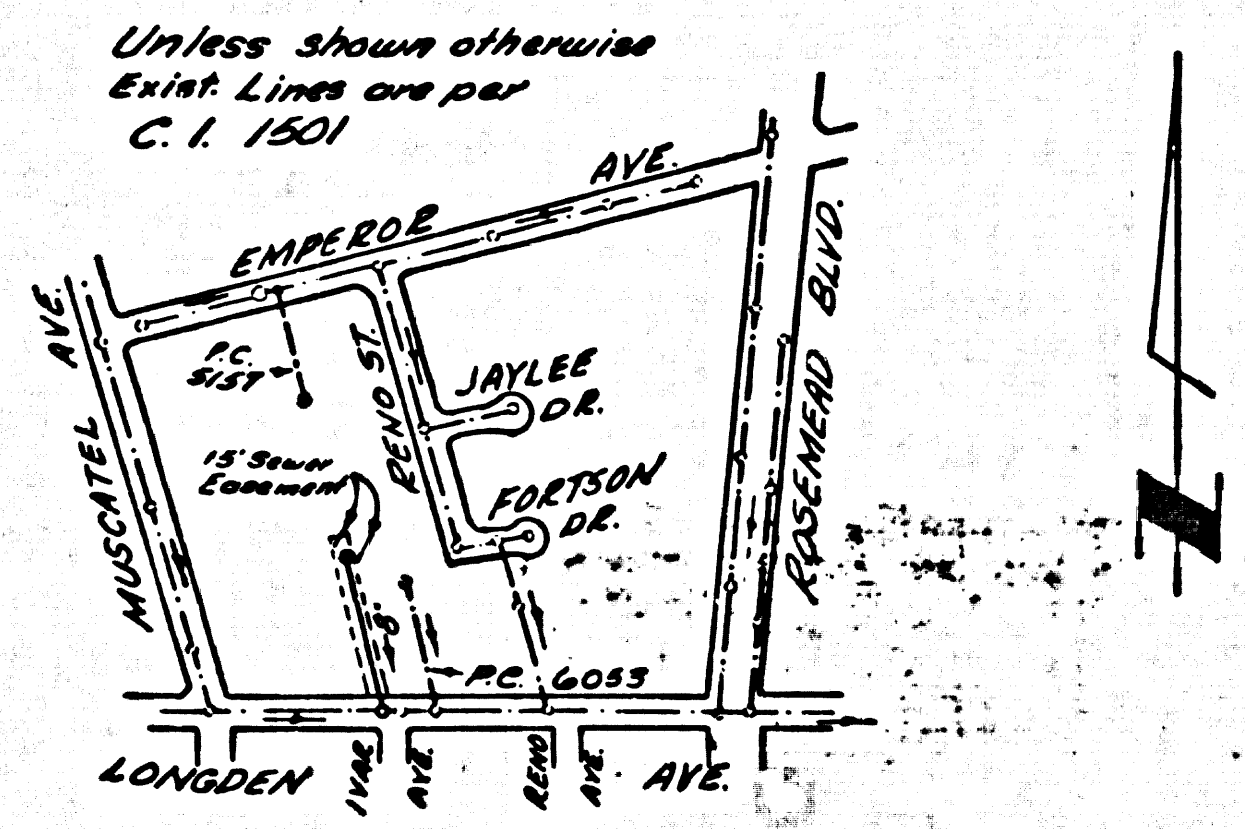
PRIVATE CONTRACT NO. 6338

W.S. 44, C-4  
1 SHEET 2 PAGES  
SCALE: VERT. 1"=4'  
HORIZ. 1"=40'  
SEPTEMBER, 1962.  
PREPARED IN THE OFFICES OF  
L. FREDERICK PACK & ASSOCIATES  
By: *L. Frederick Pack*  
REG. C. E. NO. 7448  
FOR LEGEND SEE PLAN NO. S-A-64

B.M. T.E. 945 Elev. 479.606  
F.B. 1588 - 243 Muscatel Ave.  
(West Side) at Emperor Ave.  
Bl. Spike in Concrete Driveway  
to House No. 6379

COLLECT CHARGES  
AS INDICATED  
*R. Pearce 10/29/62*

- NOTES:
1. PROVIDE STAKES ON THE PROPERTY LINE OR PROPERTY LINES PRODUCED AT RIGHT ANGLES TO THE SEWER LINE AT THE CENTER LINE OF EACH MANHOLE.
  2. NO REPRESENTATIVE OF THE COUNTY ENGINEER WILL SURVEY OR LAY OUT ANY PORTION OF THE WORK.
  3. THE PRIVATE ENGINEER SHALL FURNISH THE COUNTY ENGINEER WITH GRADE SHEETS AND STATIONING FOR ALL HOUSE LATERALS AND Y BRANCHES AND SHALL PROVIDE STAKES FOR THEM AT THEIR PROPER LOCATIONS WITH STATIONING PLAINLY MARKED. ALL HOUSE LATERALS SHALL BE CONSTRUCTED IN A STRAIGHT ALIGNMENT AT RIGHT ANGLES FROM THE MAIN LINE SEWER EXCEPT AS SHOWN ON THE PLANS; ANY CHANGE IN ALIGNMENT SHALL BE REQUESTED IN WRITING BY THE PRIVATE ENGINEER.
  4. THE PRIVATE ENGINEER SHALL FURNISH THE HOUSE LATERAL DEPTH AT THE PROPERTY LINE BELOW THE GROUND ELEVATION FOR EACH HOUSE LATERAL ON THE GRADE SHEET.
  5. NO REVISIONS SHALL BE MADE IN THESE PLANS WITHOUT THE APPROVAL OF THE COUNTY ENGINEER.
  6. USE STANDARD MANHOLE FRAMES AND COVERS, S-117, EXCEPT AS NOTED.
  7. USE EXTRA STRENGTH PIPE EXCEPT AS NOTED, ALL PIPE IS STANDARD DEPTH.
  8. USE CEMENT MORTAR OR MECHANICAL COMPRESSION JOINTS FOR ALL V.C.P. PER SPECS. SECS. 34 & 36.
  9. RESURFACE ALL TRENCH WITHIN PAVED AREA TO MEET L.A. COUNTY ROAD DEPT. OR CALIF. STATE HIGHWAY REQUIREMENTS IN ACCORDANCE WITH PERMITS.
  10. IF A POWER POLE IS WITHIN THREE FEET OF THE SEWER, THE SEWER SHALL BE ENCASED, PER S-117-172 L.A.C.D. TWO FEET ON EITHER SIDE FROM THE POINT OF INTERFERENCE.
  11. HOUSE LATERALS TO BE CONSTRUCTED WITH INVERTS AT PROPERTY LINE 6" FEET BELOW EXISTING GROUND SURFACE EXCEPT AS NOTED.
  12. USE MECHANICAL COMPRESSION JOINTS FOR ALL V.C.P. HOUSE LATERALS PER SPECS. SEC. 36.
  13. FOR ALLOWABLE LEAKAGE TEST USE FORMULA NO. 1, SPECS. SEC. 34.
  14. MANHOLE TOPS IN IMPROVED RIGHTS-OF-WAY TO BE LEVEL WITH FINISHED GRADE.
  15. THE CONTRACTOR SHALL NOTIFY THE CONSTRUCTION DIVISION BY TELEPHONE, MADISON 5-1414, EXT. 3581 AT LEAST TWENTY-FOUR HOURS BEFORE STARTING ANY WORK UNDER THIS CONTRACT.
  16. MANHOLES SHALL BE BRICK SEWER STRUCTURES PER S-117-164, DECAST CONCRETE MANHOLES PER S-117-135 OR S-117-173 MAY BE USED AS AN ALTERNATIVE IN LOCATIONS APPROVED BY THE COUNTY ENGINEER.
  17. WHENEVER GROUND WATER IS ENCOUNTERED DURING THE CONSTRUCTION OF THE SEWERS, THE V.C.P. JOINTS SHALL BE OF JOINT COMPOUND PER SPECS. SECS. 33 AND 40, OR MECHANICAL COMPRESSION JOINTS PER SPECS. SEC. 36.
  18. IF DURING THE COURSE OF CONSTRUCTION IT IS DETERMINED THAT THERE IS LESS THAN FOUR FEET OF COVER OVER THE TOP OF A MAIN LINE OR HOUSE LATERAL V.C.P. SEWER WHICH IS NOT INDICATED ON THE PLANS, THE PIPE SHALL BE ENCASED PER S-117-172, CASE III, UNLESS OTHERWISE APPROVED BY THE COUNTY ENGINEER.
  19. ALL STATE AND LOCAL TRENCH SAFETY ORDINANCES WILL BE RIGIDLY ENFORCED.



NO CONNECTIONS FOR THE DISPOSAL OF INDUSTRIAL WASTES SHALL BE MADE TO SEWERS SHOWN ON THESE DRAWINGS WITHOUT WRITTEN PERMISSION FROM THE CHIEF ENGINEER AND GENERAL MANAGER OF THE COUNTY SANITATION DISTRICTS.

NOTE:  
GRADES TO WHICH THIS IMPROVEMENT IS TO BE CONSTRUCTED ARE SHOWN ON PLANS AND PROFILES. GRADE POINTS FOR TOP OF CURBS, CENTER LINE OF STREETS OR CENTER LINE OF ALLEYS ARE SHOWN BY CIRCLES ON PROFILES. AT ALL POINTS BETWEEN DESIGNATED POINTS THE GRADE SHALL BE ESTABLISHED SO AS TO CONFORM TO A STRAIGHT LINE DRAWN BETWEEN SAID DESIGNATED POINTS.  
ELEVATIONS ARE IN FEET ABOVE U.S.C. & G.S. SEA LEVEL DATUM OF 1929.  
THIS DRAWING AND THE DATA HEREON ARE HEREBY MADE A PART OF THE SPECIFICATIONS.  
WORK SHALL BE CONSTRUCTED ACCORDING TO SPECIFICATIONS ON FILE IN THE OFFICE OF THE COUNTY ENGINEER AND SHALL BE PROSECUTED ONLY IN THE PRESENCE OF THE COUNTY ENGINEER.  
BEFORE WORK CAN BE STARTED THE CONTRACTOR MUST OBTAIN A PERMIT TO EXCAVATE IN COUNTY STREETS FROM THE L.A. COUNTY ROAD DEPT., DISTRICT OFFICE NO. 2, AND PAY A FEE TO THE COUNTY ENGINEER ROOM 310 COUNTY ENGINEER'S BUILDING, 148 W. 2<sup>ND</sup> ST. SUFFICIENT TO COVER THE COST OF CONSTRUCTION INSPECTION AND RECORD PLANS.  
APPROVAL OF THIS PLAN BY THE COUNTY OF LOS ANGELES DOES NOT CONSTITUTE A REPRESENTATION AS TO THE ACCURACY OF THE LOCATION OF OR THE EXISTENCE OR NON-EXISTENCE OF ANY UNDERGROUND UTILITY PIPE, OR STRUCTURE WITHIN THE LIMITS OF THIS PROJECT. THIS NOTE APPLIES TO ALL PAGES.  
IF WORK IS TO BE DONE IN A STATE HIGHWAY, A PERMIT MUST BE OBTAINED FROM THE STATE OF CALIFORNIA, DIVISION OF HIGHWAYS, 130 SOUTH SPRING STREET, STANFORD SPECIFICATIONS DATED MAY 25, 1962 APPLY IN THE CONSTRUCTION OF THIS PROJECT.  
COUNTY OF LOS ANGELES, CALIFORNIA

APPROVED, JOHN A. LAMNIE, COUNTY ENGINEER APPROVED, J.D. PARKHURST, CHIEF ENGINEER  
ASST. SANITATION ENGINEER OFFICE ENGINEER  
CHECKED BY: *J. K. Williams* 11-1-62  
OFFICE OF COUNTY ENGINEER, REG. C. E. NO. 9466  
SUBMITTED BY: *N. F. Brannan*  
SAN GABRIEL VALLEY REGIONAL ENGINEER

COLLECT CHARGES  
AS INDICATED

32882

