

PUENTE BLDG. DIST. NO. 2

PROFILE ALIGNMENT AND GRADE OF P.C. 6340
SANITARY SEWERS PAGE 1
TO BE CONSTRUCTED IN

TRACT NO. 27394
PRIVATE CONTRACT NO. 6340

W.S. 39
9 SHEETS; 8 PAGES

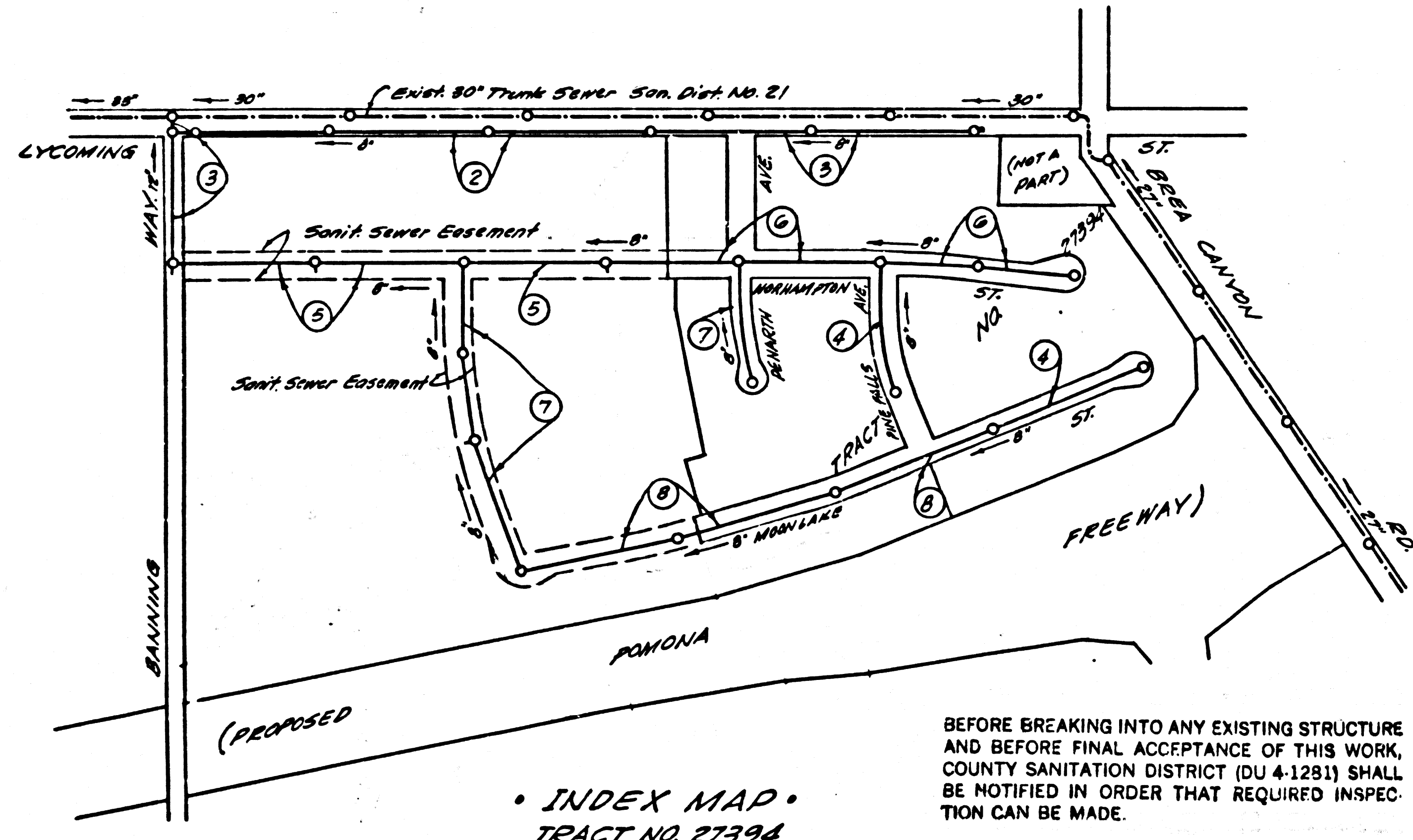
SCALE: VERT. 1"=4'
HORIZ. 1"=40'
MAR. 1963
PREPARED IN THE OFFICES OF

THOMSEN ENGINEERING INC.

By: Hans C. Thomsen
REG. C. E. NO. 8244

FOR LEGEND SEE PLAN NO. S.A. 44

33695



INDEX MAP
TRACT NO. 27394
Scale: 1" = 300' P.C. 6340

BEFORE BREAKING INTO ANY EXISTING STRUCTURE AND BEFORE FINAL ACCEPTANCE OF THIS WORK, COUNTY SANITATION DISTRICT (DU 4-1281) SHALL BE NOTIFIED IN ORDER THAT REQUIRED INSPECTION CAN BE MADE.

B.M. 5.9 1797 Fd. C.S. Mon. in Well 8" dia. on N.W. 1/4 cor. Brae Canyon Rd. & Lycoming St. 211.5' N 1/4 E 210' N 1/4 E Intersection Nhd. B.M. 44-3' (Baseline 1955) El. 559.623.

COLLECT CHARGES AS INDICATED
H. Scott

NO CONNECTIONS FOR THE DISPOSAL OF INDUSTRIAL WASTES SHALL BE MADE TO SEWERS SHOWN ON THESE DRAWINGS WITHOUT WRITTEN PERMISSION FROM THE CHIEF ENGINEER AND GENERAL MANAGER OF THE COUNTY SANITATION DISTRICTS.

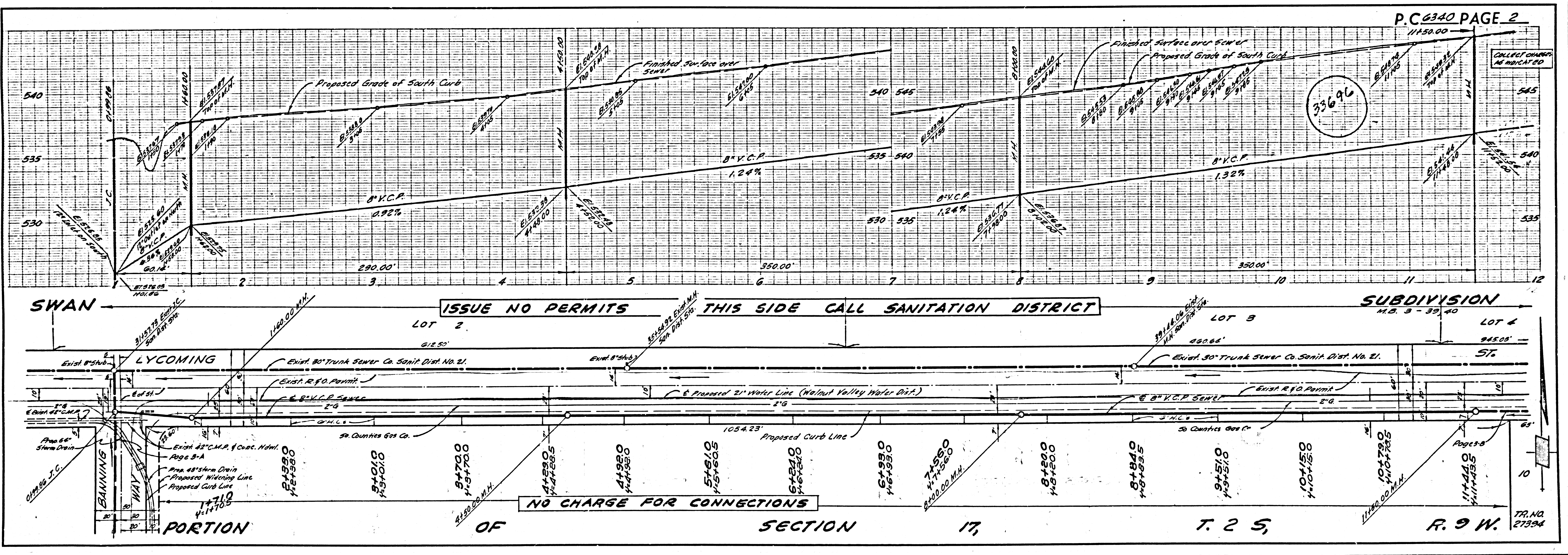
NOTE: GRADING TO ELEVATION OF PROPOSED SOUTH CURBS ON LYCOMING ST. MUST BE COMPLETED PRIOR TO CONSTRUCTION OF SEWER.

NOTE: Thomsen Engr. Inc. has shown underground structures and utilities on this project from the best available records and does not accept any responsibility for the location of structures shown nor for the existence of any structure not shown. It shall be the contractor's responsibility to verify the locations of structures shown and the existence of any structures not shown.

REVISION:
Revised Page 7-B and Page 8, Labeled 8" V.C.P. Sewer on Page 7-B from 30" DIA to 36" DIA. Labeled 8" V.C.P. Sewer on Page 8 from 36" DIA to 30" DIA. DATE 4-4-63 APPROVED: J.E. Tolson, R.C.E.N. 11676

NOTE: GRADES TO WHICH THIS IMPROVEMENT IS TO BE CONSTRUCTED ARE SHOWN ON PLANS AND PROFILES. GRADE POINTS FOR TOP OF CURBS, CENTER LINE OF STREETS, OR CENTER LINE OF ALLEYS ARE SHOWN BY CIRCLES ON PROFILE. AT ALL POINTS BETWEEN DESIGNATED POINTS THE GRADE SHALL BE ESTABLISHED SO AS TO CONFORM TO A STRAIGHT LINE DRAWN BETWEEN SAID DESIGNATED POINTS. ELEVATIONS ARE IN FEET ABOVE U.S.C. & G.S. SEA LEVEL DATUM OF 1929. THIS DRAWING AND THE DATA HEREON ARE HEREBY MADE A PART OF THE SPECIFICATIONS. WORK SHALL BE CONSTRUCTED ACCORDING TO SPECIFICATIONS ON FILE IN THE OFFICE OF THE COUNTY ENGINEER AND SHALL BE PROSECUTED ONLY IN THE PRESENCE OF THE COUNTY ENGINEER. BEFORE WORK CAN BE STARTED, THE CONTRACTOR MUST OBTAIN A PERMIT TO EXCAVATE IN COUNTY STREETS FROM THE L.A. COUNTY ROAD DIST. DISTRICT OFFICE NO. 1 AND PAY A FEE TO THE COUNTY ENGINEER ROOM 330 CO. ENGR'S BLDG. 108 W. 2ND ST. L.A. C. SUFFICIENT TO COVER THE COST OF CONSTRUCTION INSPECTION AND RECORD PLANS. APPROVAL OF THIS PLAN BY THE COUNTY OF LOS ANGELES DOES NOT CONSTITUTE A REPRESENTATION AS TO THE ACCURACY OF THE LOCATION OF OR THE EXISTENCE OR NON-EXISTENCE OF ANY UNDERGROUND UTILITY PIPE, OR STRUCTURE WITHIN THE LIMITS OF THIS PROJECT. THIS NOTE APPLIES TO ALL PAGES. IF WORK IS TO BE DONE IN A STATE HIGHWAY, A PERMIT MUST BE OBTAINED FROM THE STATE OF CALIFORNIA, DIVISION OF HIGHWAYS, 120 SOUTH SPRING STREET.

COUNTY OF LOS ANGELES, CALIFORNIA
JOHN A. LAMBIE, COUNTY ENGINEER
APPROVED: J.D. PARKHURST CHIEF ENGINEER
CO. SAN. DIST. NO. 21
APPROVED BY: [Signature] SANITATION ENGINEER
SUBMITTED BY: [Signature] REGIONAL ENGINEER
CHECKED BY: [Signature] 5-7-63
R.P. C.E. NO. 3406 J.N. 0358-96



ISSUE NO PERMITS THIS SIDE CALL SANITATION DISTRICT

NO CHARGE FOR CONNECTIONS

P.C. 6340 PAGE 2

33696

COLLECT CHARGES AS INDICATED

