

SAN DIMAS BLDG. DIST. NO. 10

PROFILE ALIGNMENT AND GRADE OF P.C. 6343

SANITARY SEWERS PAGE 1

TO BE CONSTRUCTED IN J.N. 0358.98

TRACT No 27421

PRIVATE CONTRACT NO. 6343

W.S. 48

2 SHEETS; 4 PAGES

SCALE: HORIZ. 1"=40' VERT. 1"=4' SEPTEMBER, 1962

PREPARED IN THE OFFICES OF

BROWN ENGINEERING

7638 COMMONWEALTH AVE., BUREAU PARK, CALIF.

PHONE: LAWRENCE 1-6633

REG. C. E. NO. 2645

FOR LEGEND SEE PLAN NO. S-A-44

NOTE: GRADES TO WHICH THIS IMPROVEMENT IS TO BE CONSTRUCTED ARE SHOWN ON PLANS AND PROFILES. GRADE POINTS FOR TOP OF CURBS, CENTER LINE OF STREETS, OR CENTER LINE OF ALLEYS ARE SHOWN BY CIRCLES ON PROFILES. AT ALL POINTS BETWEEN DESIGNATED POINTS THE GRADE SHALL BE ESTABLISHED SO AS TO CONFORM TO A STRAIGHT LINE DRAWN BETWEEN SAID DESIGNATED POINTS. ELEVATIONS ARE IN FEET ABOVE U.S.C. & G.S. SEA LEVEL DATUM OF 1929. THIS DRAWING AND THE DATA HEREON ARE HEREBY MADE A PART OF THE SPECIFICATIONS. WORK SHALL BE CONSTRUCTED ACCORDING TO SPECIFICATIONS ON FILE IN THE OFFICE OF THE COUNTY ENGINEER AND SHALL BE PROSECUTED ONLY IN THE PRESENCE OF THE COUNTY ENGINEER. BEFORE WORK CAN BE STARTED THE CONTRACTOR MUST OBTAIN A PERMIT TO EXCAVATE IN COUNTY STREETS FROM THE L. A. COUNTY ROAD DEPT., DISTRICT OFFICE NO. 10, AND PAY A FEE TO THE COUNTY ENGINEER, ROOM 330 L. A. COUNTY BLDG. 108 N. 2ND ST., OR THE SAN DIMAS REGIONAL OFFICE, SUFFICIENT TO COVER THE COST OF CONSTRUCTION INSPECTION AND RECORD DRAWINGS. APPROVAL OF THIS PLAN BY THE COUNTY OF LOS ANGELES DOES NOT CONSTITUTE A REPRESENTATION AS TO THE ACCURACY OF THE LOCATION OR OF THE EXISTENCE OR NON-EXISTENCE OF ANY UNDERGROUND UTILITY PIPE, OR STRUCTURE WITHIN THE LIMITS OF THIS PROJECT. THIS NOTE APPLIES TO ALL PAGES. IF WORK IS TO BE DONE IN A STATE HIGHWAY, A PERMIT MUST BE OBTAINED FROM THE STATE OF CALIFORNIA, DIVISION OF HIGHWAYS, 128 SOUTH SPRING STREET.

COUNTY OF LOS ANGELES, CALIFORNIA

APPROVED JOHN A. LAMBIE, COUNTY ENGINEER

APPROVED J.D. PARKHURST, CHIEF ENGINEER

BY *John A. Lambie* ASST. SANITATION ENGINEER

BY *J.D. Parkhurst* OFFICE ENGINEER

CHECKED BY *S.K. Dider* 10-11-62

OFFICE OF COUNTY ENGINEER, REG. C. E. NO. 3492

SUBMITTED: *W.C. Peirce* 10-8-62
SAN DIMAS REGIONAL ENGINEER

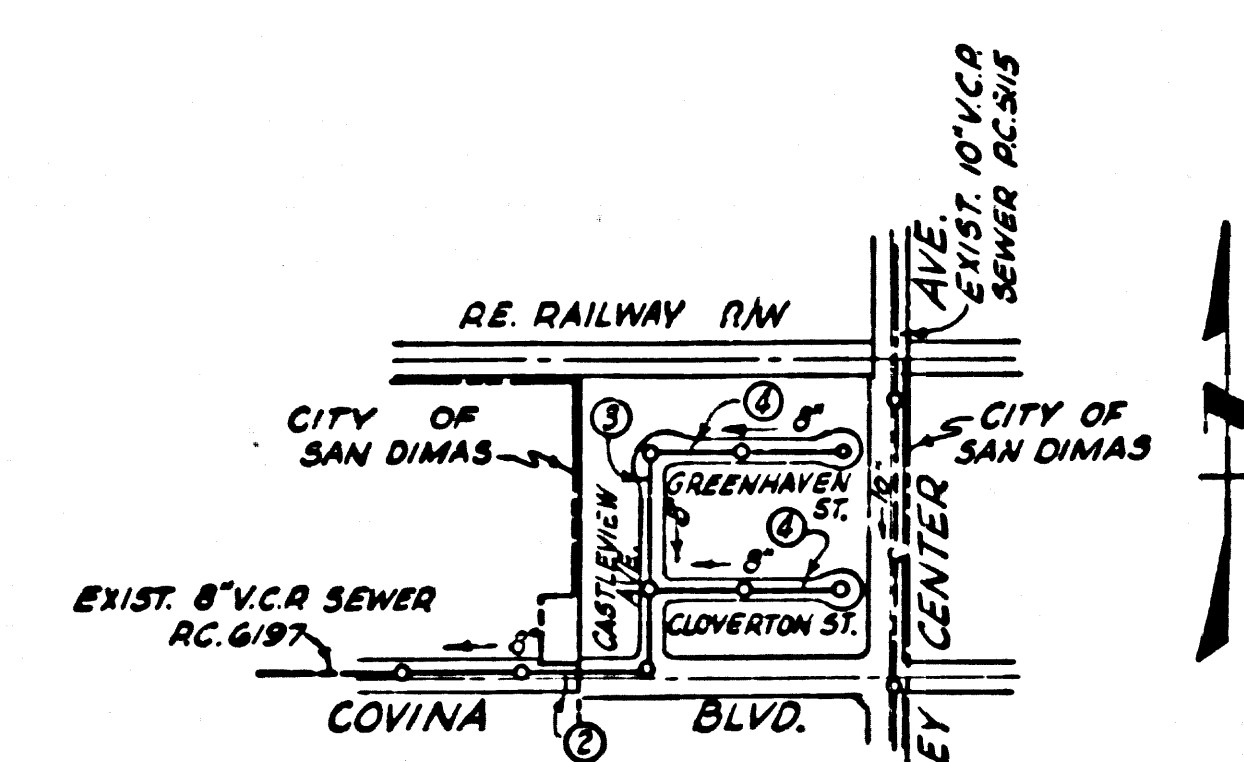
- NOTES:
1. PROVIDE STAKES ON THE PROPERTY LINE OR PROPERTY LINES PRODUCED AT RIGHT ANGLES TO THE SEWER LINE AT THE CENTER LINE OF EACH MANHOLE.
 2. NO REPRESENTATIVE OF THE COUNTY ENGINEER WILL SURVEY OR LAY OUT ANY PORTION OF THE WORK.
 3. THE OWNER OR HIS AUTHORIZED REPRESENTATIVE SHALL FURNISH THE COUNTY ENGINEER WITH GRADE SHEETS AND STATIONING FOR ALL HOUSE LATERALS AND Y BRANCHES AND SHALL PROVIDE STAKES FOR THEM AT THEIR PROPER LOCATIONS WITH STATIONING PLAINLY MARKED. ALL HOUSE LATERALS SHALL BE CONSTRUCTED IN A STRAIGHT ALIGNMENT AT RIGHT ANGLES FROM THE MAIN LINE SEWER EXCEPT AS SHOWN ON PLANS. ANY CHANGE IN LOCATION SHALL BE REQUESTED IN WRITING BY THE OWNER OR HIS REPRESENTATIVE.
 4. THE PRIVATE ENGINEER SHALL FURNISH THE HOUSE LATERAL DEPTH AT THE PROPERTY LINE BELOW THE TOP OF CURB ELEVATION FOR EACH HOUSE LATERAL ON THE GRADE SHEET.
 5. NO REVISIONS SHALL BE MADE IN THESE PLANS WITHOUT THE APPROVAL OF THE COUNTY ENGINEER.
 6. USE STANDARD MANHOLE FRAMES AND COVERS, S-117, EXCEPT AS NOTED.
 7. USE EXTRA STRENGTH PIPE, ALL PIPE STANDARD DEPTH.
 8. USE CEMENT MORTAR OR MECHANICAL COMPRESSION JOINTS FOR ALL V.C.R. JOINTS IN MAIN LINE PER SPEC'S. SECS. 36148
 9. RESURFACE ALL TRENCH WITHIN PAVED AREA TO MEET L.A. COUNTY ROAD DEPT. OR CALIF. STATE HIGHWAY REQUIREMENTS IN ACCORDANCE WITH PERMITS.
 10. ENCASE FOUR FEET OF SEWER AT POINTS OF INTERFERENCE WITH POLES, CASE III, S-4172.
 11. HOUSE LATERALS TO BE CONSTRUCTED WITH INVERTS AT PROPERTY LINE 6 FEET BELOW CURB GRADE EXCEPT AS NOTED.
 12. MANHOLES SHALL BE BRICK SEWER STRUCTURES 3'-0" PRECAST CONCRETE MANHOLES PER S-0-135 OF S-0-173 MAY BE USED AS AN ALTERNATE IN LOCATIONS APPROVED BY THE COUNTY ENGINEER.
 13. FOR ALLOWABLE LEAKAGE TEST USE FORMULA NO. 1, SPEC'S. SEC. 34.
 14. MANHOLE TOPS IN UNIMPROVED RIGHTS-OF-WAY TO BE SIX INCHES ABOVE FINISHED GRADE.
 15. THE CONTRACTOR SHALL NOTIFY THE CONSTRUCTION DIVISION BY TELEPHONE, MADISON 9-4747, EXT. 8861 AT LEAST TWENTY-FOUR HOURS BEFORE STARTING ANY WORK UNDER THIS CONTRACT.
 16. STANDARD SPECIFICATIONS DATED MAY 25, 1962 APPLY IN THE CONSTRUCTION OF THIS PROJECT.
 17. USE MECHANICAL COMPRESSION JOINTS FOR ALL V.C.R. HOUSE LATERALS PER SPEC'S. SEC. 36149
 18. ALL STATE AND LOCAL TRENCH SAFETY ORDERS WILL BE RIGIDLY ENFORCED.
 19. WHEREVER GROUND WATER IS ENCOUNTERED DURING THE CONSTRUCTION OF THE SEWERS, THE V.C.R. JOINTS SHALL BE OF JOINT COMPOUND PER SPEC'S., SEC. 35148, OR MECHANICAL COMPRESSION JOINTS PER SPEC'S., SEC. 36.
 20. IF DURING THE COURSE OF CONSTRUCTION IT IS DETERMINED THAT THERE IS LESS THAN FOUR FEET OF COVER OVER THE TOP OF A MAIN LINE OR HOUSE LATERAL V.C.R. SEWER, WHICH IS NOT INDICATED ON THE PLANS, THE PIPE SHALL BE ENCASED PER S-0-172, CASE II, UNLESS OTHERWISE APPROVED BY THE COUNTY ENGINEER.

NO CONNECTIONS FOR THE DISPOSAL OF INDUSTRIAL WASTES SHALL BE MADE TO SEWERS SHOWN ON THESE DRAWINGS WITHOUT WRITTEN PERMISSION FROM THE CHIEF ENGINEER AND GENERAL MANAGER OF THE COUNTY SANITATION DISTRICTS.

Noted: *[Signature]*
CITY OF SAN DIMAS

BENCH MARK S.G. 1521
L.A. COUNTY SURVEY MON. @ INTERSECTION OF COVINA BLVD. & VALLEY CENTER AVE. MARKED "R.E. 63" (USE NORTH EDGE) 7' BELOW SURFACE (SAN DIMAS 1960.)
ELEV. 782.646

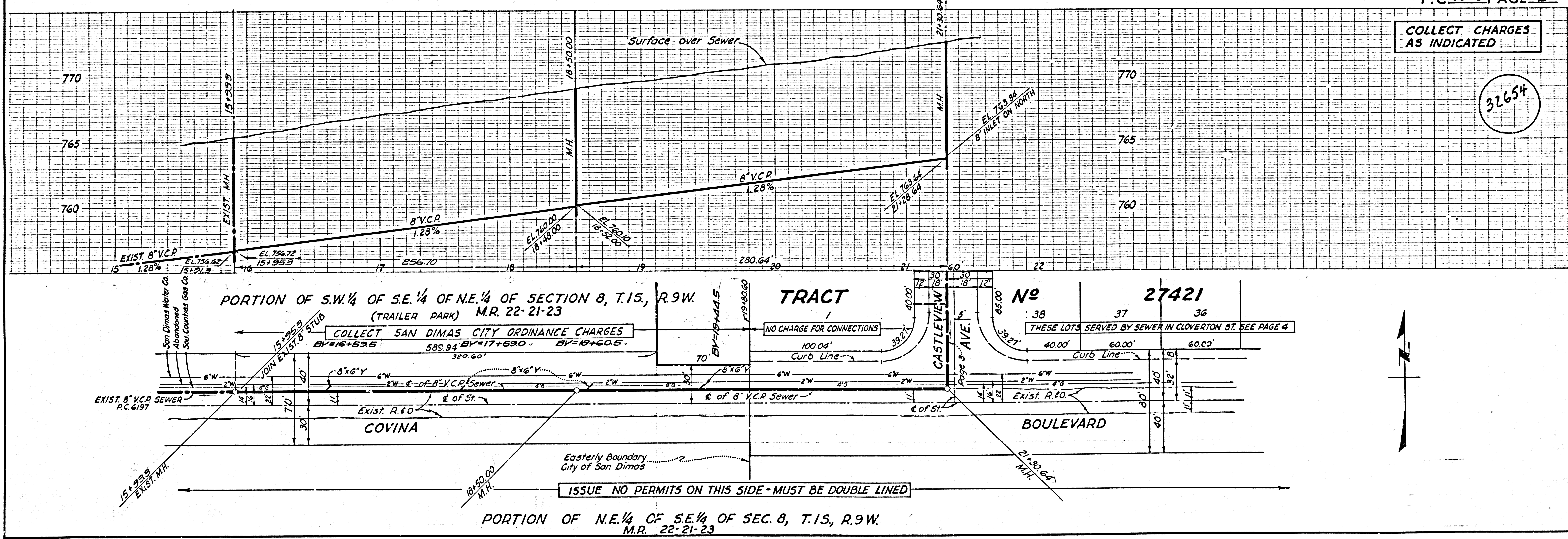
COLLECT CHARGES AS INDICATED
Edward J. Beckman 10-9-62



INDEX MAP
SCALE: 1"=600'
TRACT NO. 27421
P.C. 6343

P.C. 6343 PAGE 2

COLLECT CHARGES AS INDICATED



PORTION OF S.W. 1/4 OF S.E. 1/4 OF N.E. 1/4 OF SECTION 8, T.15, R.9.W. (TRAILER PARK) M.R. 22-21-23

TRACT No 27421

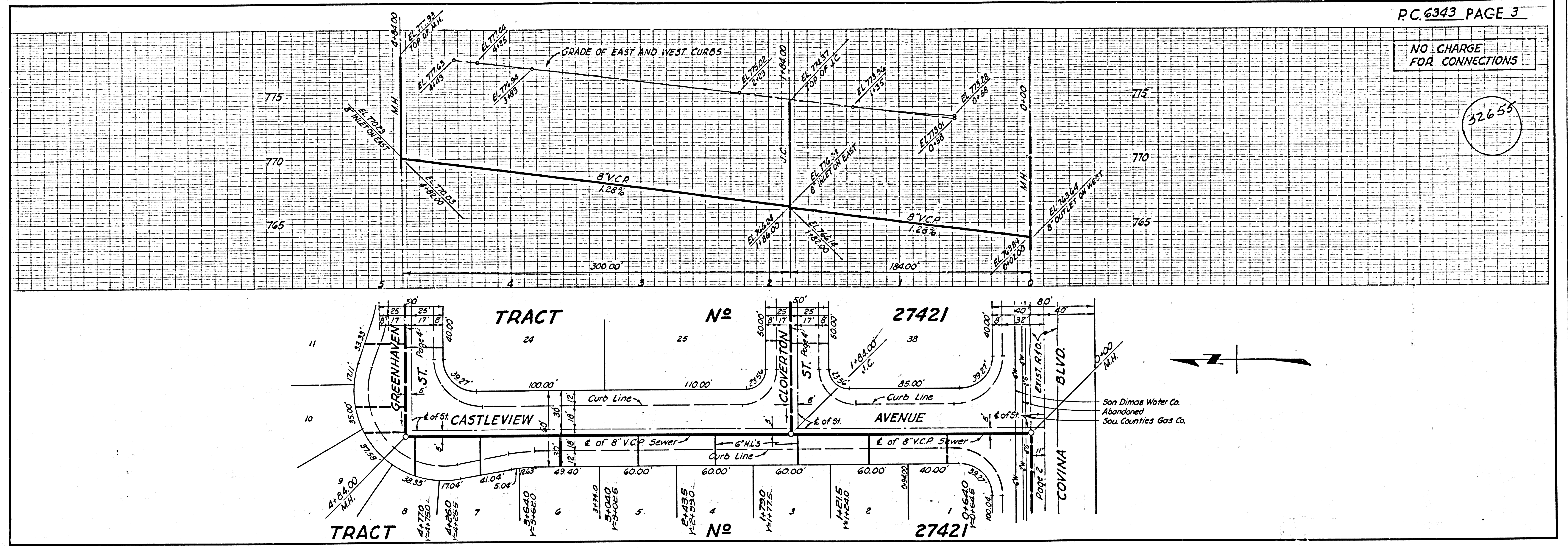
THESE LOTS SERVED BY SEWER IN CLOVERTON ST. SEE PAGE 4

PORTION OF N.E. 1/4 OF S.E. 1/4 OF SEC. 8, T.15, R.9.W. M.R. 22-21-23

ISSUE NO PERMITS ON THIS SIDE - MUST BE DOUBLE LINED

NO CHARGE FOR CONNECTIONS

32655



NO CHARGE FOR CONNECTIONS

32656

