

BRADBURY BLDG. DIST. NO. 5.01

PROFILE ALIGNMENT AND GRADE OF P.C. 6344

SANITARY SEWERS PAGE 1

TO BE CONSTRUCTED IN

TRACT No 24735

PRIVATE CONTRACT NO. 6344

W.S. 46

2 SHEETS; 3 PAGES

SCALE: VERT. 1"=4' HORIZ. 1"=40'

AUGUST, 1962

PREPARED IN THE OFFICES OF

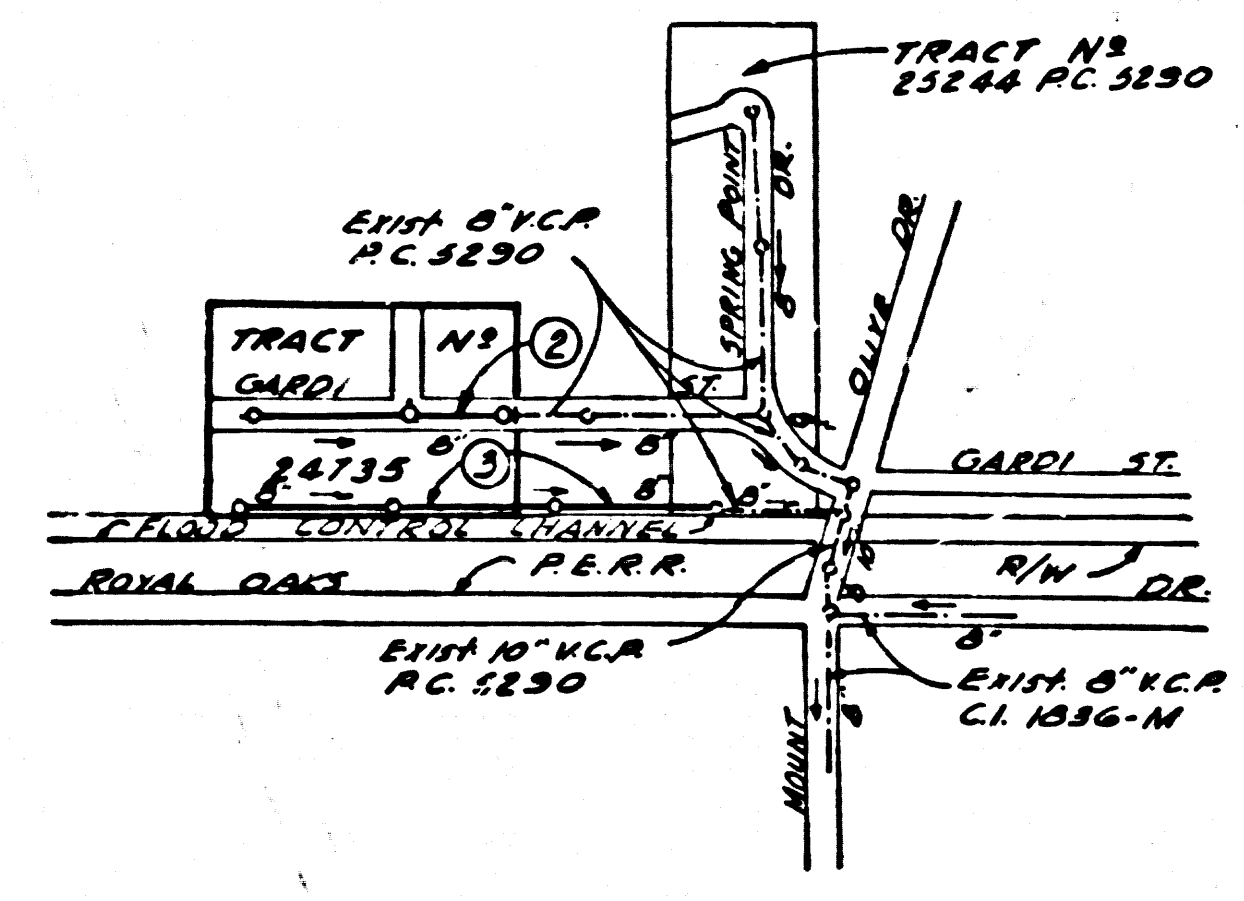
KEMMERER ENGR. CO. INC.

By: Robert R. Filmer

REG. C. E. NO. 11349

FOR LEGEND SEE PLAN NO. S-A-64

33234



INDEX MAP  
TRACT No 24735  
P.C. 6344  
SCALE: 1"=600'

NOTE:  
THE EXISTENCE AND APPROXIMATE LOCATION OF UNDERGROUND UTILITIES OR STRUCTURES SHOWN ON THESE PLANS WERE DETERMINED BY A SEARCH OF THE AVAILABLE PUBLIC RECORDS. TO THE BEST OF OUR KNOWLEDGE THERE ARE NO EXISTING UNDERGROUND UTILITIES OR STRUCTURES EXCEPT AS SHOWN ON THIS MAP. THE CONTRACTOR IS REQUIRED TO TAKE OUR PRECAUTIONARY MEASURES TO PROTECT THE UTILITIES OR STRUCTURES AT THE SITE. IT SHALL BE THE CONTRACTOR'S RESPONSIBILITY TO NOTIFY THE OWNERS OF THE UTILITIES OR STRUCTURES CONCERNED, BEFORE STARTING WORK.

- NOTES:
1. PROVIDE STAKES ON THE PROPERTY LINE OR PROPERTY LINES PRODUCED AT RIGHT ANGLES TO THE SEWER LINE AT THE CENTER LINE OF EACH MANHOLE.
  2. NO REPRESENTATIVE OF THE CITY ENGINEER WILL SURVEY OR LAY OUT ANY PORTION OF THE WORK.
  3. THE CONTRACTOR SHALL FURNISH THE CITY ENGINEER WITH GRADE SHEETS AND STATIONING FOR ALL HOUSE LATERALS AND Y BRANCHES AND SHALL PROVIDE STAKES FOR THEM AT THEIR PROPER LOCATIONS WITH STATIONING PLAINLY MARKED. ALL HOUSE LATERALS SHALL BE CONSTRUCTED IN A STRAIGHT LINE UNLESS OTHERWISE INDICATED BY THE ENGINEER OR APPROVED BY THE COUNTY ENGINEER.
  4. THE PRIVATE ENGINEER SHALL FURNISH THE HOUSE LATERAL DEPTH AT THE PROPERTY LINE BELOW THE TOP OF CURB ELEVATION FOR EACH HOUSE LATERAL ON THE GRADE SHEET.
  5. NO REVISIONS SHALL BE MADE IN THESE PLANS WITHOUT THE APPROVAL OF THE CITY ENGINEER.
  6. USE STANDARD MANHOLE FRAMES AND COVERS, 2'-11", SPEC. 22.
  7. USE EXTRA STRENGTH PIPE: ALL PIPE IS STANDARD DEPTH.
  8. USE CEMENT MORTAR OR MECHANICAL COMPRESSION JOINT FOR ALL V.C.P. JOINTS IN MAIN LINE PER SPEC'S. SECS. 301-48 MINUS IN ACCORDANCE WITH PERMITS.
  9. RESURFACE ALL TRENCH WITHIN PAVED AREA TO MEET L.A. COUNTY ROAD DEPT. OR CALIF. STATE HIGHWAY REQUIREMENTS IN ACCORDANCE WITH PERMITS.
  10. IF A POWER POLE IS WITHIN 5 FEET OF THE SEWER THE SEWER SHALL BE ENCASED PER 5'-4" CASE III, 2 FEET ON EITHER SIDE, FROM THE POINT OF INTERFERENCE TO THE END OF THE ENCASEMENT.
  11. HOUSE LATERALS TO BE CONSTRUCTED WITH INVERTS AT PROPERTY LINE 1'-0" JUST BELOW CURB GRADE.
  12. ALL STRUCTURES SHALL BE CONCRETE STRUCTURES, S.B. 104. DEEpest CONCRETE MANHOLES PER S.B. 135 OR S.B. 173 MAY BE USED AS AN ALTERNATE IN LOCATIONS APPROVED BY THE COUNTY ENGINEER.
  13. FOR ALLOWABLE LEAKAGE TEST USE FORMULA NO. 1, SPEC'S. SEC. 54.
  14. MANHOLE TOPS IN UNIMPROVED RIGHTS-OF-WAY TO BE SIX INCHES ABOVE FINISHED GRADE.
  15. THE CONTRACTOR SHALL NOTIFY THE CONSTRUCTION & PERMITS DIVISION BY TELEPHONE, MADISON 9-4141, BY MAIL AT LEAST TWENTY-FOUR HOURS BEFORE STARTING ANY WORK UNDER THIS CONTRACT.
  16. STANDARD SPECIFICATIONS DATED MAY 1, 1959 1962 APPLY IN THE CONSTRUCTION OF THIS PROJECT.
  17. USE MECHANICAL COMPRESSION JOINTS FOR ALL V.C.P. JOINTS IN HOUSE LATERALS PER SPEC'S. SEC. 36.
  18. WHEREVER GROUND WATER IS ENCOUNTERED DURING THE CONSTRUCTION OF THE SEWERS, THE V.C.P. JOINTS SHALL BE OF JOINT COMPOUND PER SPEC'S. SECS. 38 AND 43 OR MECHANICAL COMPRESSION JOINTS PER SPEC'S. SEC. 36.
  19. IF DURING THE COURSE OF CONSTRUCTION IT IS DETERMINED THAT THERE IS LESS THAN FOUR FEET OF COVER OVER THE TOP OF A MAIN LINE OR HOUSE LATERAL V.C.P. SEWER WHICH IS NOT INDICATED ON THE PLANS, THE PIPE SHALL BE ENCASED PER 5'-4" CASE III, UNLESS OTHERWISE APPROVED BY THE COUNTY ENGINEER.
  20. ALL STATE AND LOCAL TRENCH SAFETY ORDERS WILL BE RIGIDLY ENFORCED.

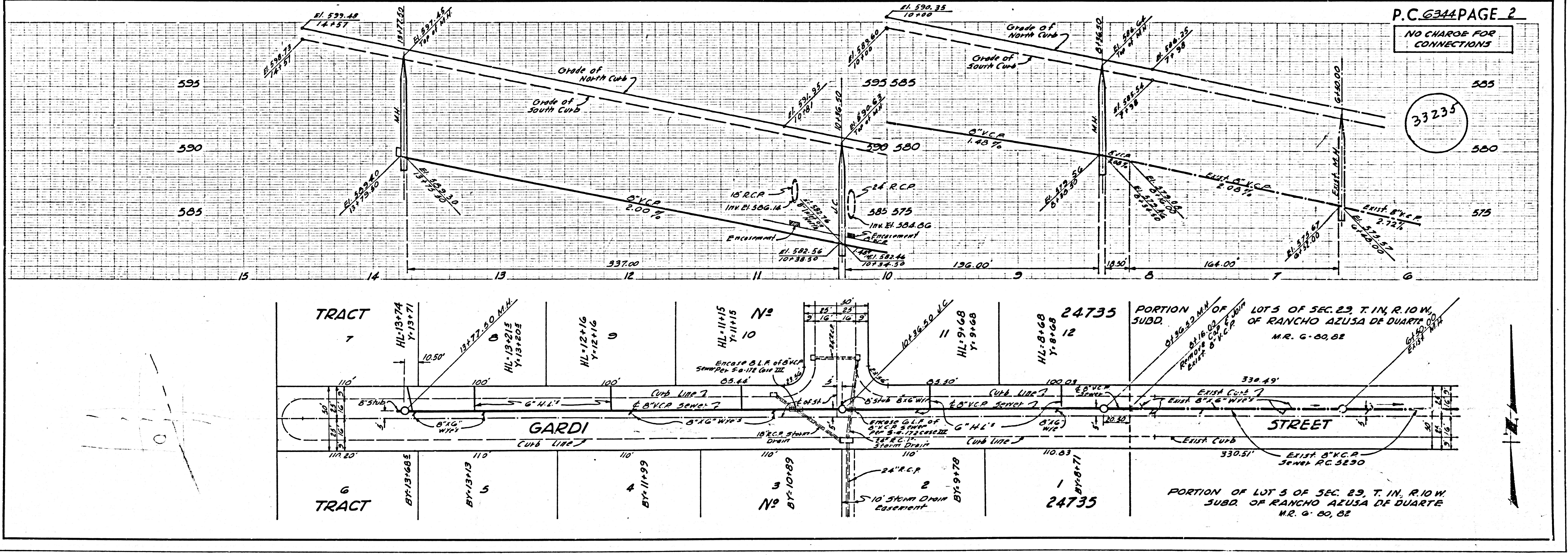
BENCH MARK:  
S.G. 2224- LEAD NAIL 1' FROM E.C.R.  
@ S.E. COR. OF ELMHURST AVE. &  
FOOTHILL BLVD. (COWNA 60)  
ELEV. 532.587

NO CONNECTIONS FOR THE DISPOSAL OF INDUSTRIAL WASTES SHALL BE MADE TO SEWERS SHOWN ON THESE DRAWINGS WITHOUT WRITTEN PERMISSION FROM THE CHIEF ENGINEER AND GENERAL MANAGER OF THE COUNTY SANITATION DISTRICTS.

NO CHARGE FOR CONNECTIONS  
R. Pearce 12/14/62

NOTE:  
GRADE TO WHICH THIS IMPROVEMENT IS TO BE CONSTRUCTED ARE SHOWN ON PLANS AND PROFILES. GRADE POINTS FOR TOP OF CURB, CENTER LINE OF STREETS, OR CENTER LINE OF ALLEYS ARE SHOWN BY CIRCLES ON PROFILES. AT ALL POINTS BETWEEN DESIGNATED POINTS THE GRADE SHALL BE ESTABLISHED SO AS TO CONFORM TO A STRAIGHT LINE DRAWN BETWEEN SAID DESIGNATED POINTS.  
ELEVATIONS ARE IN FEET ABOVE U.S.C. & G.S. SEA LEVEL DATUM OF 1929.  
THIS DRAWING AND THE DATA HEREON ARE HEREBY MADE A PART OF THE SPECIFICATIONS ON FILE IN THE OFFICE OF THE CITY ENGINEER AND SHALL BE PROSECUTED ONLY IN THE PRESENCE OF THE CITY ENGINEER.  
BEFORE WORK CAN BE STARTED, THE CONTRACTOR MUST OBTAIN A PERMIT TO EXCAVATE IN THE CITY STREETS FROM L.A. CO. ROAD DEPT. DIST. OFFICE NO. 1, AND MAKE A DEPOSIT WITH THE CITY OF BRADBURY, 500 WASHINGTON AVE. BRADBURY, CALIF. SUFFICIENT TO COVER THE COST OF CONSTRUCTION INSPECTION AND RECORD PLANS.  
APPROVAL OF THIS PLAN BY THE CITY OF BRADBURY DOES NOT CONSTITUTE A REPRESENTATION AS TO THE ACCURACY OF THE LOCATION OR OF THE EXISTENCE OR NON-EXISTENCE OF ANY UNDERGROUND UTILITY PIPE, OR STRUCTURE WITHIN THE LIMITS OF THIS PROJECT. THIS NOTE APPLIES TO ALL PAGES.  
IF WORK IS TO BE DONE IN A STATE HIGHWAY, A PERMIT MUST BE OBTAINED FROM THE STATE OF CALIFORNIA, DIVISION OF HIGHWAYS, 128 SOUTH SPRING STREET.

CITY OF BRADBURY, CALIFORNIA  
APPROVED, JOHN A. LAMBIE, CITY ENGINEER  
APPROVED, J.D. AMERHURST, CHIEF ENGINEER  
CO. SAN. DIST. NO. 22  
BY: [Signature] ASST. SANITATION ENGINEER  
BY: [Signature] OFFICE ENGINEER  
CHECKED BY: [Signature] 1-2-63  
OFFICE OF CITY ENGINEER, REG. C. E. NO. 3406  
APPROVED: N.F. Braunder  
SAN GABRIEL VALLEY REGIONAL ENGINEER



P.C. 6344 PAGE 2  
NO CHARGE FOR CONNECTIONS

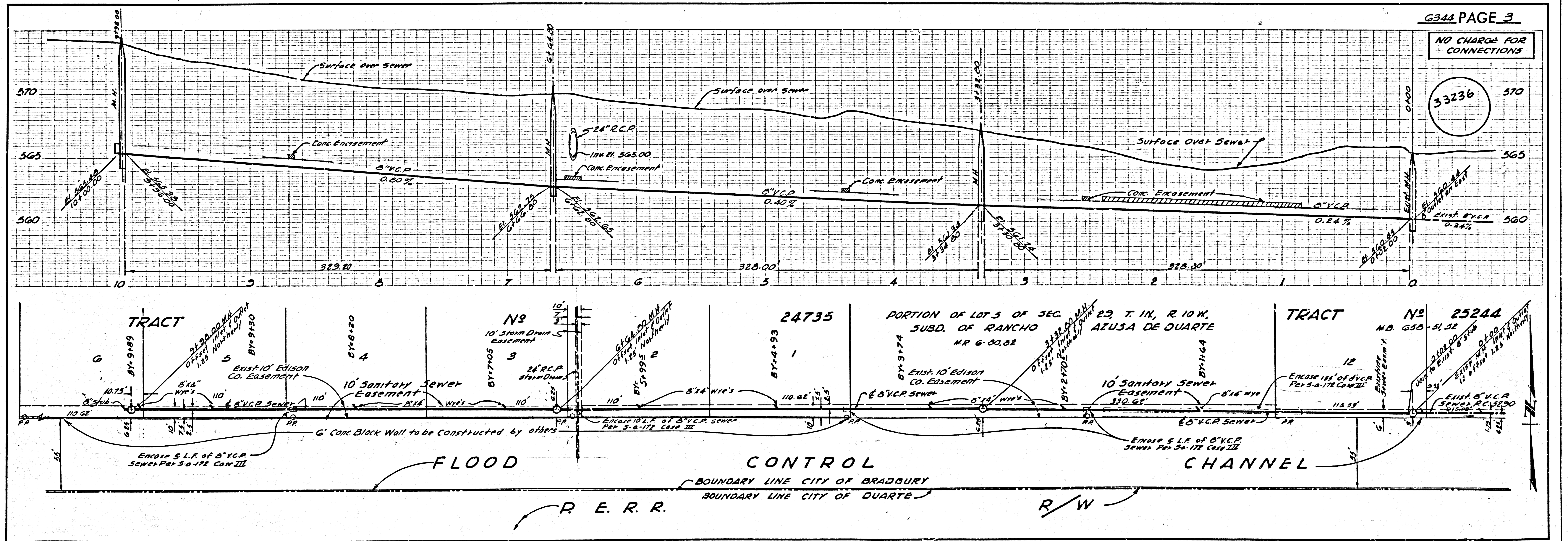
33235

TRACT 7A 5A 5B 5C 5D 5E 5F 5G 5H 5I 5J 5K 5L 5M 5N 5O 5P 5Q 5R 5S 5T 5U 5V 5W 5X 5Y 5Z

5

AREA DA

TRACT N° 5432



6344 PAGE 3

NO CHARGE FOR CONNECTIONS

33236

TRACT N° 5432

5