

B.M. SY 3902 ELEV. 22.01
 Spike in Conc. pavement ± 18' West of
 & intersection of Griffith St. &
 Broadway.
 GARDENA QUAD. 1925

LEARNOX BLDG. DIST. NO. 7

PROFILE ALIGNMENT AND GRADE OF P.C. 6347
 SANITARY SEWERS PAGE 1
 TO BE CONSTRUCTED IN J.M. 0359.01
 GRIFFITH ST.

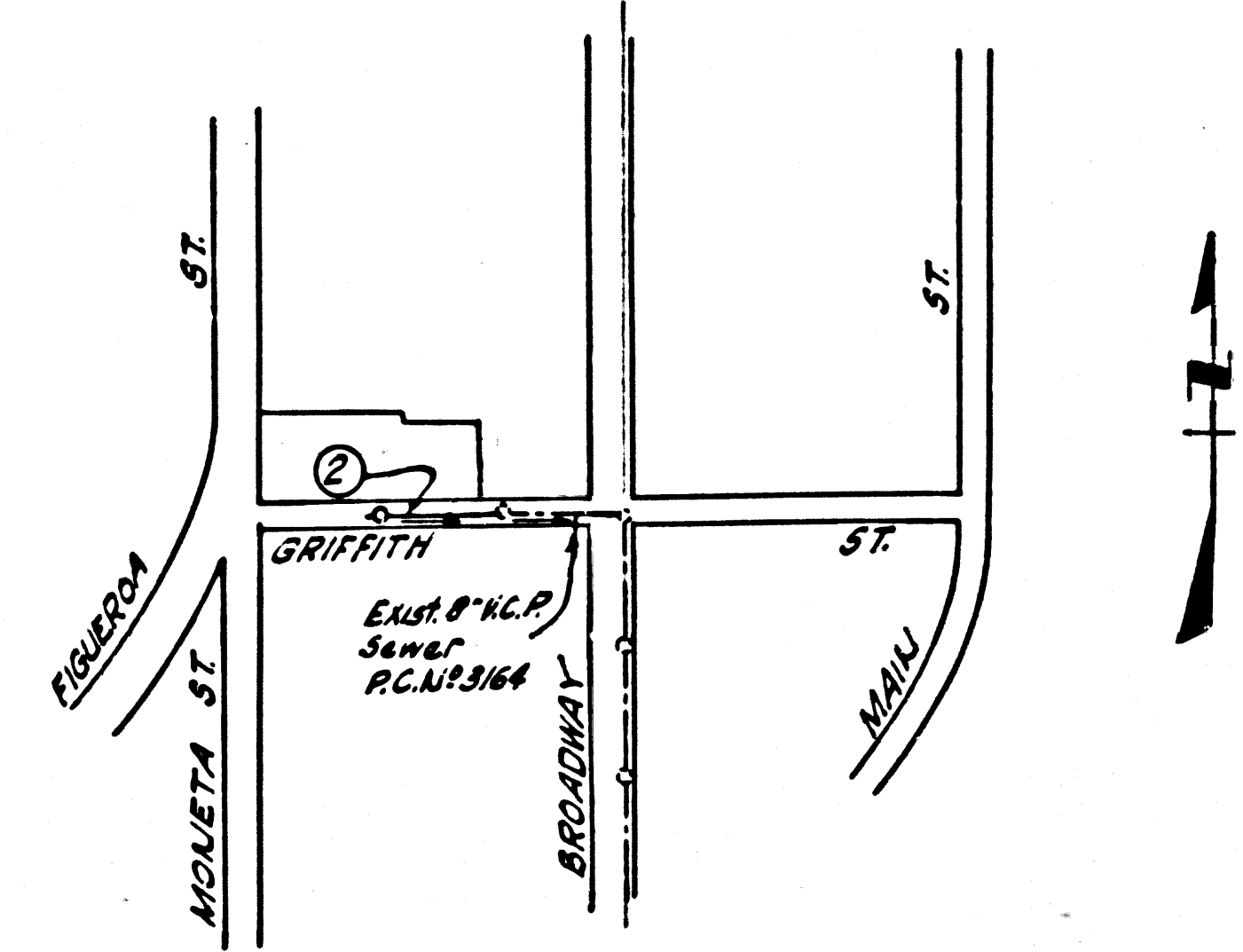
PRIVATE CONTRACT NO. 6347

W.S. 266
 1 SHEET : 2 PAGES
 SCALE: VERT. 1"=4' HORIZ. 1"=40' SEPT., 1962
 PREPARED IN THE OFFICES OF
 OLSON SURVEYING SERVICE

32942

By: *James H. Olson*
 REG. C. E. NO. 7820

FOR LEGEND SEE PLAN NO. S-A-64



INDEX MAP
 SCALE: 1"=600'
 P.C. NO. 6347

PRIVATE ENGINEER'S
 NOTICE TO CONTRACTOR

The address and location of any underground utility pipes or structures shown on these plans are obtained by a search of the available records. To the best of our knowledge there are no existing utilities except as shown on this map.
 The Contractor is required to take the precautionary measures to protect the utility lines shown and any other lines not shown or not shown on this drawing.

NO CHARGE FOR CONNECTIONS
Joe R. Elchright 12-21-62

NO CONNECTIONS FOR THE DISPOSAL OF INDUSTRIAL WASTES SHALL BE MADE TO SEWERS SHOWN ON THESE DRAWINGS WITHOUT WRITTEN PERMISSION FROM THE CHIEF ENGINEER AND GENERAL MANAGER OF THE COUNTY SANITATION DISTRICTS.

APPROVED: *Joe R. Elchright 10-2-62*
 INDUSTRIAL WASTE DIVISION

NOTE:
 GRADES TO WHICH THIS IMPROVEMENT IS TO BE CONSTRUCTED ARE SHOWN ON PLANS AND PROFILES. GRADE POINTS FOR TOP OF CURBS, CENTER LINE OF STREETS, OR CENTER LINE OF ALLEYS ARE SHOWN BY CIRCLES ON PROFILES. AT ALL POINTS BETWEEN DESIGNATED POINTS THE GRADE SHALL BE ESTABLISHED SO AS TO CONFORM TO A STRAIGHT LINE DRAWN BETWEEN SAID DESIGNATED POINTS.
 ELEVATIONS ARE IN FEET ABOVE U.S.C. & G.S. SEA LEVEL DATUM OF 1929.
 THIS DRAWING AND THE DATA HEREON ARE HEREBY MADE A PART OF THE SPECIFICATIONS.
 BEFORE WORK CAN BE STARTED, THE CONTRACTOR MUST OBTAIN A PERMIT TO EXCAVATE IN COUNTY STREETS FROM THE L.A. COUNTY ROAD DEPT., DISTRICT OFFICE NO. 11, AND PAY A FEE TO THE COUNTY ENGINEER, ROOM 310, COUNTY ENGINEER, 120 S. GRADY ST., LOS ANGELES, CALIF. SUFFICIENT TO COVER THE COST OF CONSTRUCTION INSPECTION AND RECORD PLANS.
 APPROVAL OF THIS PLAN BY THE COUNTY OF LOS ANGELES DOES NOT CONSTITUTE A REPRESENTATION AS TO THE ACCURACY OF THE LOCATION OR THE EXISTENCE OR NON-EXISTENCE OF ANY UNDERGROUND UTILITY PIPE, OR STRUCTURE WITHIN THE LIMITS OF THIS PROJECT. THIS NOTE APPLIES TO ALL PAGES.
 IF WORK IS TO BE DONE IN A STATE HIGHWAY, A PERMIT MUST BE OBTAINED FROM THE STATE OF CALIFORNIA, DIVISION OF HIGHWAYS, 120 SOUTH SPRING STREET.

COUNTY OF LOS ANGELES, CALIFORNIA
 APPROVED, JOHN A. LAMBIE, COUNTY ENGINEER APPROVED, *CO. ENGINEER* CHIEF ENGINEER
 CO. SAN. DIST. NO. 8
 BY: *James H. Olson* ASST. SANITATION ENGINEER BY: *John A. Lambie* CHIEF ENGINEER
 CHECKED BY: *John A. Lambie*
 OFFICE OF COUNTY ENGINEER, REG. C. E. NO. 2436
 SUBMITTED BY: *Jack C. Sandoval* PALMS GROVE/VENTNILLA VALLEY REGIONAL ENGINEER R.C.E. NO.

P.C. 6347 PAGE 2

NO CHARGE FOR CONNECTION

32943

