

B.M. SY 3901 ELEV. 22.029
 SPK. IN CONC. PAVEM'T ± 14' EAST
 OF C INT. OF BROADWAY & GRIFFITH
 STREET.
 GARDENA QUAD. 19 60 Adj.

LENNOX BLDG. DIST. NO. 7

PROFILE ALIGNMENT AND GRADE OF P.C. 6351
 SANITARY SEWERS PAGE 1
 TO BE CONSTRUCTED IN

BROADWAY - SOUTH OF 190TH ST.

PRIVATE CONTRACT NO. 6351

W.S. 26

1 SHEET, 2 PAGES

32680

SCALE: VERT. 1" = 4' HORIZ. 1" = 40'

SEPT., 1962

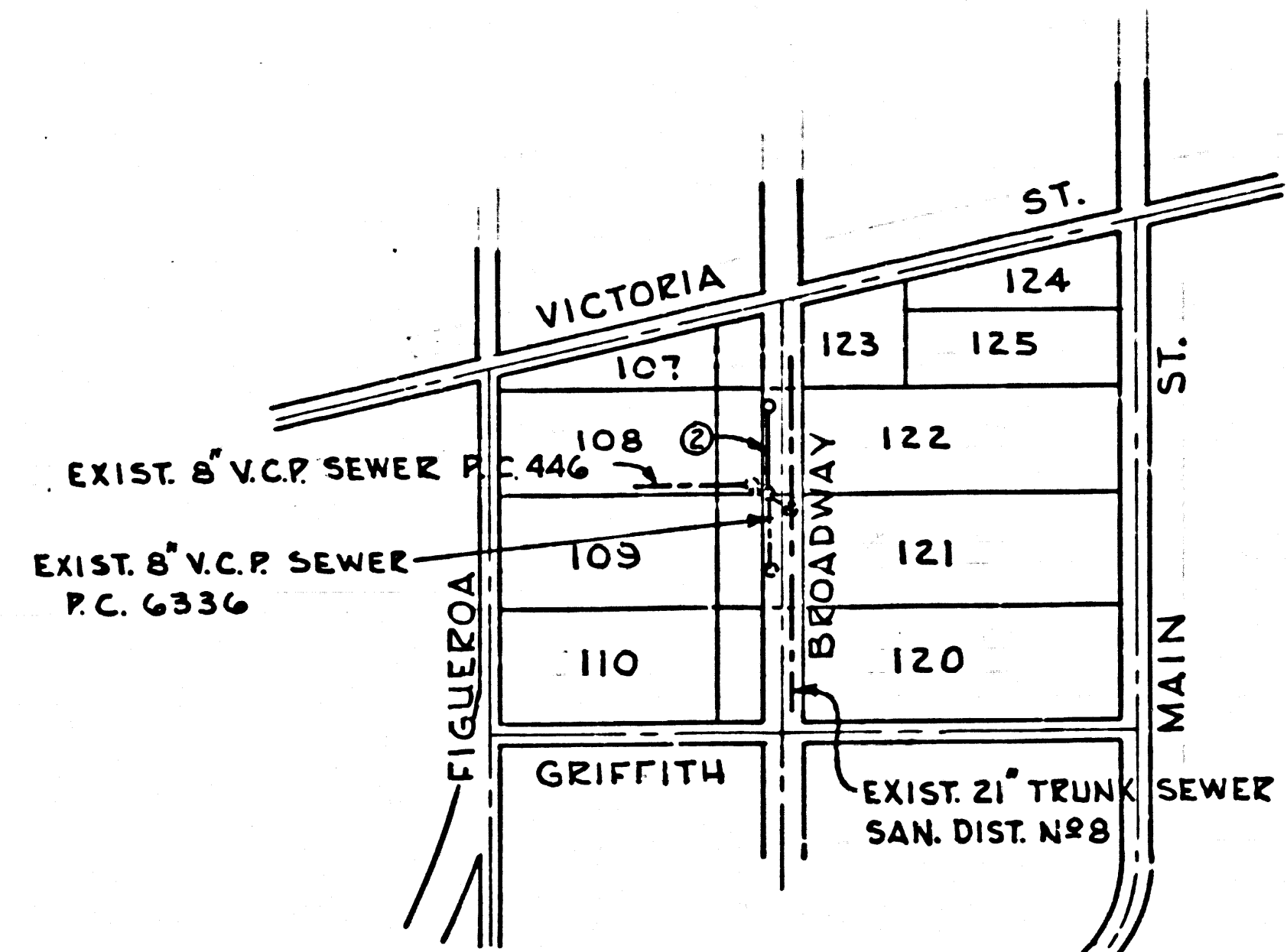
PREPARED IN THE OFFICES OF
 F.C. NYBYE CIVIL ENGR.
 524 ESPLANADE, REDONDO BEACH
 By: *F.C. Nybye*
 REG. C.E. NO. 370

FOR LEGEND SEE PLAN NO. S-664

NOTE:
 GRADES TO WHICH THIS IMPROVEMENT IS TO BE CONSTRUCTED ARE SHOWN ON PLANS AND PROFILES. GRADE POINTS FOR TOP OF CURBS, CENTER LINE OF STREETS, OR CENTER LINE OF ALLEYS ARE SHOWN BY CIRCLES ON PROFILES. AT ALL POINTS BETWEEN DESIGNATED POINTS THE GRADE SHALL BE ESTABLISHED SO AS TO CONFORM TO A STRAIGHT LINE DRAWN BETWEEN SAID DESIGNATED POINTS. ELEVATIONS ARE IN FEET ABOVE U.S.C. & G.S. SEA LEVEL DATUM OF 1929.
 THIS DRAWING AND THE DATA HEREON ARE HEREBY MADE A PART OF THE SPECIFICATIONS.
 BEFORE WORK CAN BE STARTED, THE CONTRACTOR MUST OBTAIN A PERMIT TO OCCUPY COUNTY STREETS FROM THE L.A. COUNTY ROAD DEPT., DISTRICT OFFICE NO. 3 AND PAY A FEE TO THE COUNTY ENGINEER, ROOM 330, COUNTY ENGINEERING BUILDING, 108 WEST SECOND STREET OR PALMS VILLAGES-CENTINELA VALLEY, REGIONAL OFFICE, SUFFICIENT TO COVER THE COST OF CONSTRUCTION INSPECTION AND RECORD PLANS.
 APPROVAL OF THIS PLAN BY THE COUNTY OF LOS ANGELES DOES NOT CONSTITUTE A REPRESENTATION AS TO THE ACCURACY OF THE LOCATION OR THE EXISTENCE OR NON-EXISTENCE OF ANY UNDERGROUND UTILITY PIPE, OR STRUCTURE WITHIN THE LIMITS OF THIS PROJECT. THIS NOTE APPLIES TO ALL PAGES.
 IF WORK IS TO BE DONE IN A STATE HIGHWAY, A PERMIT MUST BE OBTAINED FROM THE STATE OF CALIFORNIA, DIVISION OF HIGHWAYS, 120 SOUTH SPRING STREET, LOS ANGELES, CALIFORNIA.

COUNTY OF LOS ANGELES, CALIFORNIA
 JOHN A. LAMBIE, COUNTY ENGINEER J. D. PARKHURST, CHIEF ENGINEER
 CO. SAN. DIST. NO. 8
 APPROVED BY: *F.C. Nybye* APPROVED BY: *J.D. Parkhurst*
 REGIONAL SANITATION ENGINEER OFFICE ENGINEER
 SUBMITTED BY: *Arch C. Daney*
 REGIONAL ENGINEER
 CHECKED BY: *W.C. Under* 10-27-62
 REG. C.E. NO. 9406

J.N. 0359.02



INDEX MAP
 SCALE: 1" = 600'
 P.C. 6351

INDUSTRIAL WASTE
 APPROVED
Joe R. Knight 10/10/62

COLLECT CHARGES
 AS INDICATED
Joe R. Knight

NO CONNECTIONS FOR THE DISPOSAL OF INDUSTRIAL WASTES SHALL BE MADE TO SEWERS SHOWN ON THESE DRAWINGS WITHOUT WRITTEN PERMISSION FROM THE CHIEF ENGINEER AND GENERAL MANAGER OF THE COUNTY SANITATION DISTRICTS.

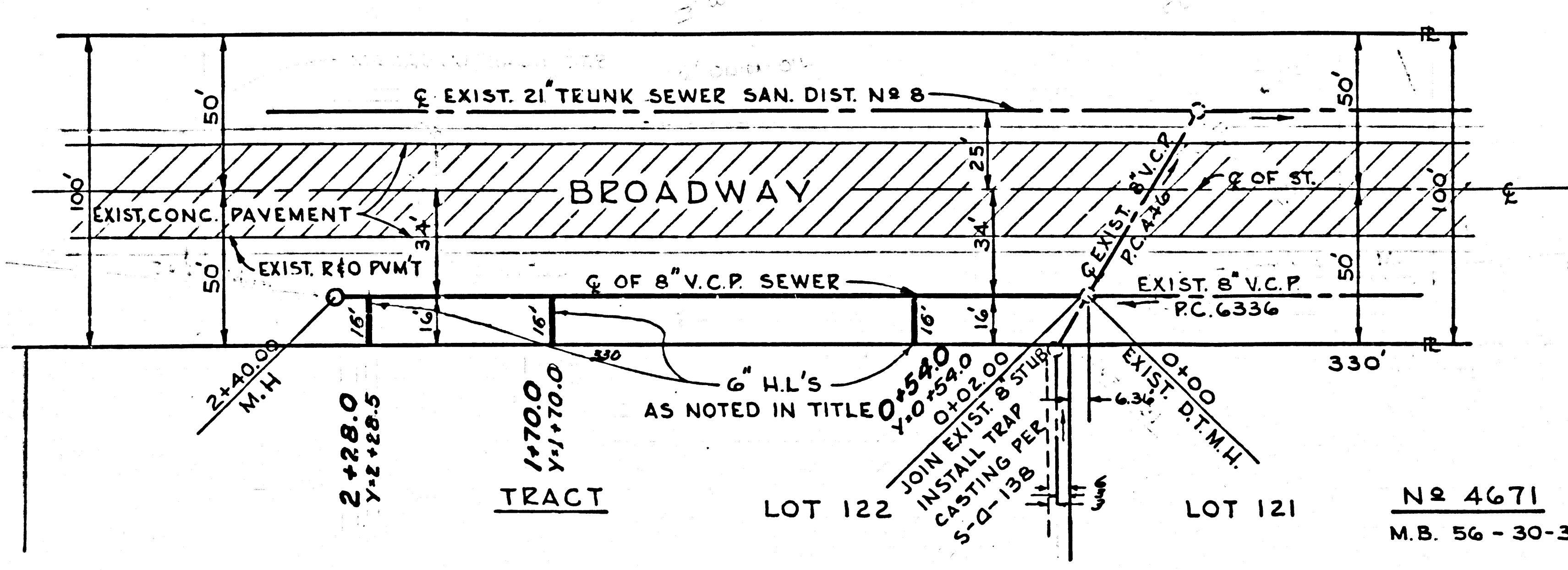
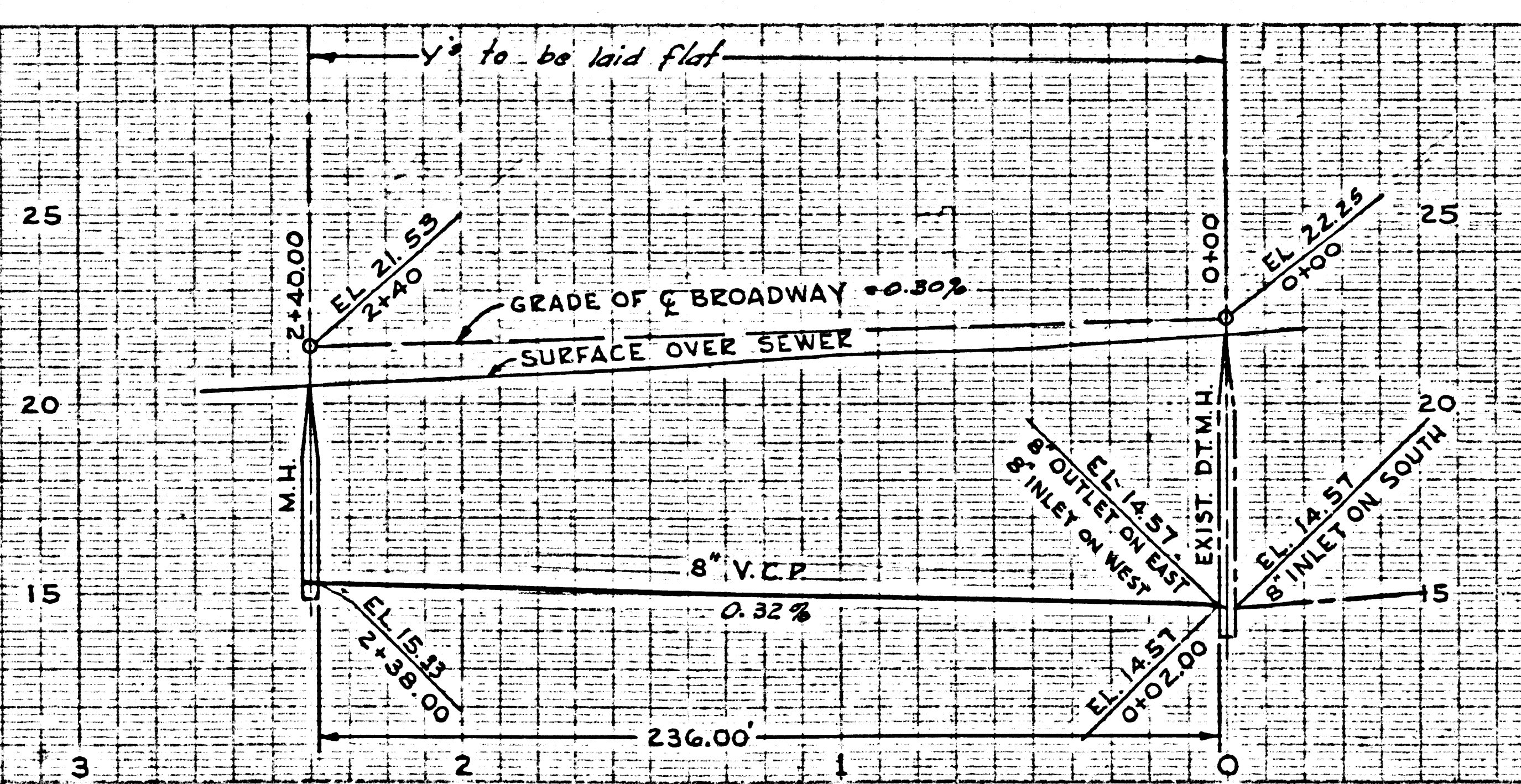
BROADWAY # 2

BROADWAY # 2

P. C. 6351 PAGE 2

NO CHARGE FOR CONNECTIONS

32680



NORTH

No 4671
 M.B. 56 - 30-31