

TO BE CONSTRUCTED IN
TRACT No 26759
AND IN OTTERBEIN AVENUE
AND IN VALENCIA STREET
PRIVATE CONTRACT NO. 6355

W.S. 38

5 SHEETS; 10 PAGES

SCALE: VERT. 1" = 4' HORIZ. 1" = 40'

PREPARED IN THE OFFICES OF
ADAMS & ELLS
CIVIL ENGINEERS

REG. C. E. NO. 10880

FOR LEGEND SEE PLAN NO. S-A-64

NOTE:
GRADES TO WHICH THIS IMPROVEMENT IS TO BE CONSTRUCTED ARE SHOWN ON PLANS AND PROFILES. GRADE POINTS FOR TOP OF CURBS, CENTER LINE OF STREETS, OR CENTER LINE OF ALLEYS ARE SHOWN BY CIRCLES ON PROFILES. AT ALL POINTS BETWEEN DESIGNATED POINTS THE GRADE SHALL BE ESTABLISHED SO AS TO CONFORM TO A STRAIGHT LINE DRAWN BETWEEN SAID DESIGNATED POINTS.
ELEVATIONS ARE IN FEET ABOVE U.S.C. & G.S. SEA LEVEL DATUM OF 1929.
THIS DRAWING AND THE DATA HEREON ARE HEREBY MADE A PART OF THE SPECIFICATIONS.
WORK SHALL BE CONSTRUCTED ACCORDING TO SPECIFICATIONS DATED MAY 25, 1928 ON FILE IN THE OFFICE OF THE COUNTY ENGINEER AND SHALL BE PREPARED AND IN THE PRESENCE OF THE COUNTY ENGINEER BEFORE WORK CAN BE STARTED. THE CONTRACTOR MUST OBTAIN A PERMIT TO OCCUPY IN COUNTY STREETS FROM THE L. A. COUNTY ROAD DEPT. DISTRICT OFFICE NO. 1 AND PAY A FEE TO THE COUNTY ENGINEER, ROOM 330 COUNTY ENGINEER BLDG. NO. 100 WEST OF SAN DIMAS AVENUE, OFFICE, SUFFICIENT TO COVER THE COST OF CONSTRUCTION INSPECTION AND RECORD PLANS.
APPROVAL OF THIS PLAN BY THE COUNTY OF LOS ANGELES DOES NOT CONSTITUTE A REPRESENTATION AS TO THE ACCURACY OF THE LOCATION OF OR THE EXISTENCE OR NON-EXISTENCE OF ANY UNDERGROUND UTILITY PIPE OR STRUCTURE WITHIN THE LIMITS OF THIS PROJECT. THIS NOTE APPLIES TO ALL PAGES.
IF WORK IS TO BE DONE IN A STATE HIGHWAY, A PERMIT MUST BE OBTAINED FROM THE STATE OF CALIFORNIA, DIVISION OF HIGHWAYS, 120 SOUTH SPRING STREET.

COUNTY OF LOS ANGELES, CALIFORNIA

JOHN A. LAMBIE, COUNTY ENGINEER

JOHN D. FARMER, CHIEF ENGINEER

APPROVED BY [Signature]

APPROVED BY [Signature]

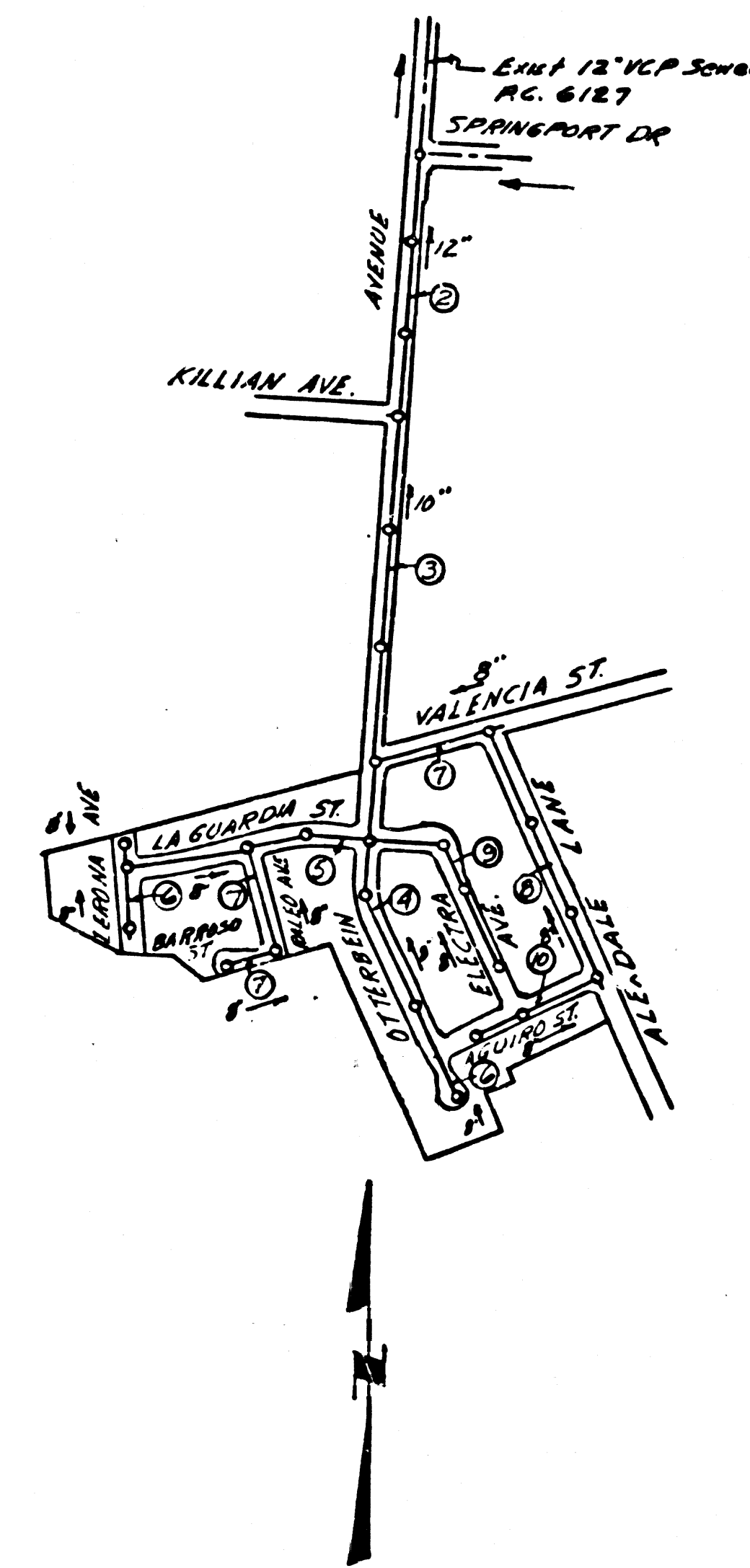
CHECKED BY [Signature]

CHECKED BY [Signature]

SUBMITTED BY W.C. Brindley RE 3419
SAN DIMAS RESIDENTAL ENGINEER
JN 0359.04

PUEENTE BLDG. DIST. NO. 2

BENCH MARK SG 1847
LET in Conc. Step Walk to House No 2149
Otterbein Ave 10' W/O & Otterbein Ave 150'
South of Valencia St. Elev. 548.44



INDEX MAP
TRACT No 26759
P.C. 6355
SCALE 1:600

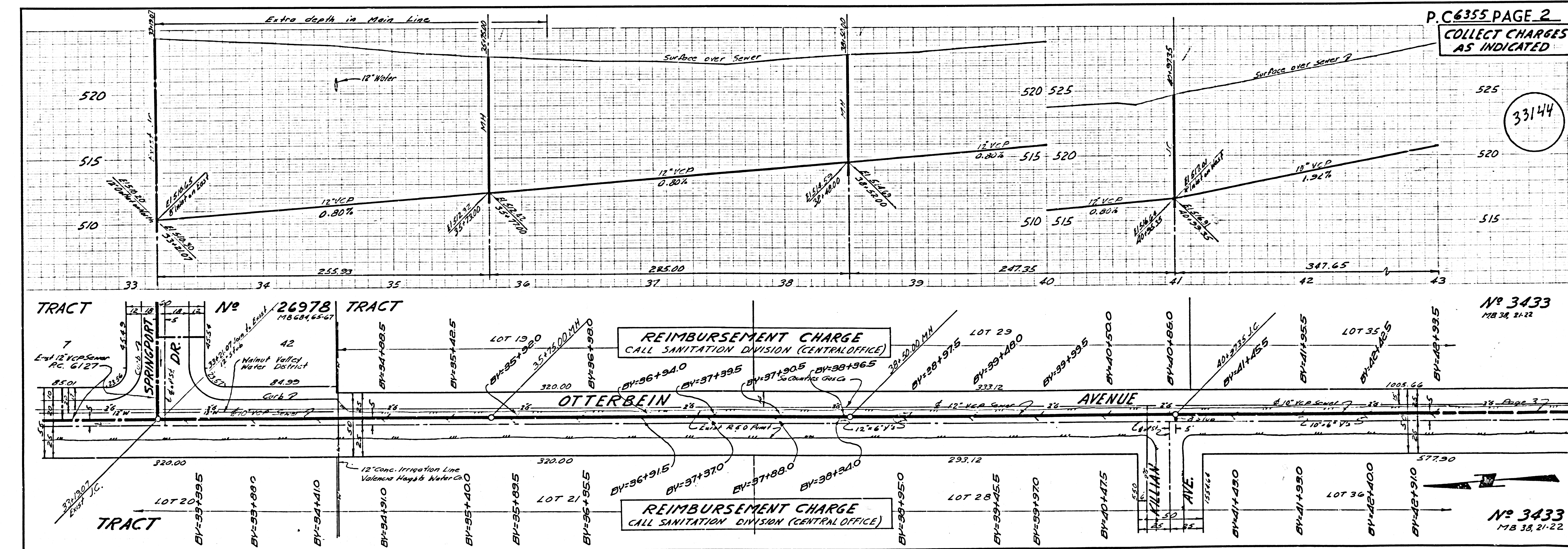
- 1. PROVIDE STAKES ON THE PROPERTY LINE OR PROPERTY LINES PRODUCED AT RIGHT ANGLES TO THE SEWER LINE AT THE CENTER LINE OF EACH MANHOLE.
- 2. NO REPRESENTATIVE OF THE COUNTY ENGINEER WILL SURVEY OR LAY OUT ANY PORTION OF THE WORK.
- 3. THE PRIVATE ENGINEER SHALL FURNISH THE COUNTY ENGINEER WITH SPADER SHEETS AND STAKING FOR ALL HOUSE LATERALS AND Y-DRAWINGS AND SHALL PROVIDE STAKES FOR THEM AT THEIR PROPER LOCATIONS WITH STAKING PLAINS MARKED. ALL HOUSE LATERALS SHALL BE CONSTRUCTED WITH STRAIGHT ALIGNMENT AT RIGHT ANGLES FROM THE MAIN LINE SEWER EXCEPT AS SHOWN ON THE PLANS. ANY CHANGE IN ALIGNMENT SHALL BE REQUESTED IN WRITING BY THE PRIVATE ENGINEER.
- 4. THE PRIVATE ENGINEER SHALL FURNISH THE HOUSE LATERAL DEPTH AT THE PROPERTY LINE BELOW THE TOP OF CURB ELEVATION FOR EACH HOUSE LATERAL ON THE GRADE SHEET.
- 5. NO REVISIONS SHALL BE MADE IN THESE PLANS WITHOUT THE APPROVAL OF THE COUNTY ENGINEER.
- 6. USE STANDARD MANHOLE FRAMES AND COVERS, 3-117.
- 7. USE EXTRA STRENGTH PIPE, ALL PIPE STANDARD DEPTH EXCEPT AS NOTED.
- 8. USE MECHANICAL COMPRESSION JOINTS FOR ALL V.C.P. JOINTS PER SPECS, SECS. M, 4.5 & 4.9.
- 9. RESURFACE ALL TRENCH WITHIN PAVED AREA TO MEET L.A. COUNTY ROAD DEPT. OR CALIF. STATE HIGHWAY REQUIREMENTS IN ACCORDANCE WITH PERMITS.
- 10. IF A POWER POLE IS WITHIN THREE FEET OF THE SEWER, THE SEWER SHALL BE ENCASED PER S-1-122 LINES IN TOP SECTION ON OTHER SIDE FROM THE POINT OF INTERFERENCE.
- 11. HOUSE LATERALS TO BE CONSTRUCTED WITH INVERTS AT PROPERTY LINE 6 FEET BELOW CURB OR DE EXCEPT AS NOTED.
- 12. MANHOLES SHALL BE BRICK SEWER STRUCTURES 5-0-104. PRECAST CONCRETE MANHOLES 5-0-135 OR 5-0-173 MAY BE USED AS AN ALTERNATE IN LOCATIONS APPROVED BY THE COUNTY ENGINEER.
- 13. FOR ALLOWABLE LEAKAGE TEST USE FORMULA NO. 1 SPECS, SEC. 14.
- 14. MANHOLE SLOPE IN SHADY PROFILES SUBJECT TO WHAT TO BE THREE INCHES ABOVE FINISHED GRADE.
- 15. THE CONTRACTOR SHALL NOTIFY THE CONSTRUCTION DIVISION BY TELEPHONE, MADISON 9-471, AT LEAST TWENTY-FOUR HOURS BEFORE STARTING ANY WORK UNDER THIS CONTRACT.
- 16. IF DURING THE COURSE OF CONSTRUCTION IT IS DETERMINED THAT THERE IS LESS THAN FOUR FEET COVER OVER THE TOP OF A MAIN LINE OR MANHOLE LATERAL V.C.P. SEWER MANHOLE AS INDICATED ON THE PLANS THE PIPE SHALL BE ENCASED PER S-1-122, CARE OF MANHOLES OTHERWISE INDICATED BY THE COUNTY ENGINEER.
- 17. ALL STATE AND LOCAL TRENCH SAFETY RULES WILL BE STRICTLY ENFORCED.

COLLECT CHARGES AS INDICATED
PR Smith

NO CONNECTIONS FOR THE DISPOSAL OF INDUSTRIAL WASTES SHALL BE MADE TO SEWERS SHOWN ON THESE DRAWINGS WITHOUT WRITTEN PERMISSION FROM THE CHIEF ENGINEER AND GENERAL MANAGER OF THE COUNTY SANITATION DISTRICTS.

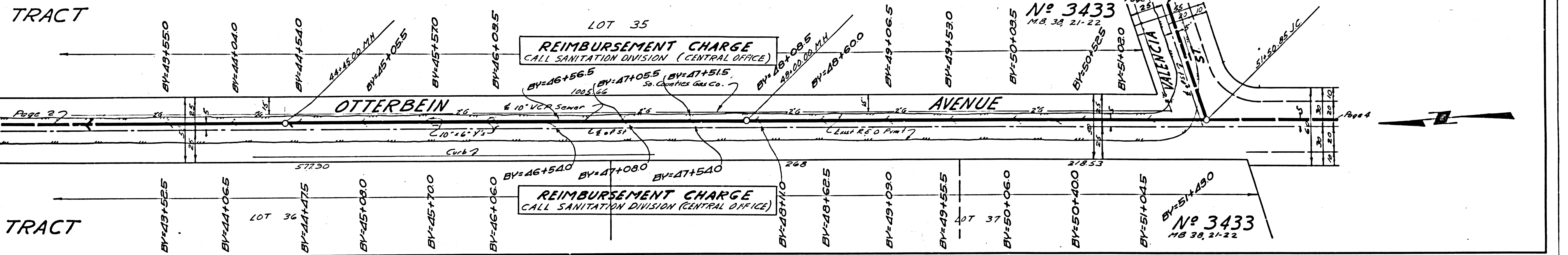
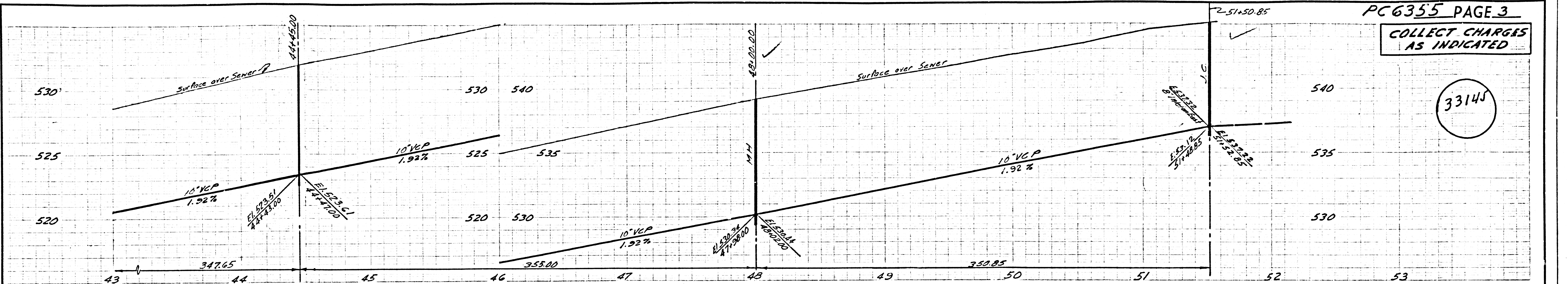
P.C. 6355 PAGE 2
COLLECT CHARGES AS INDICATED

33144



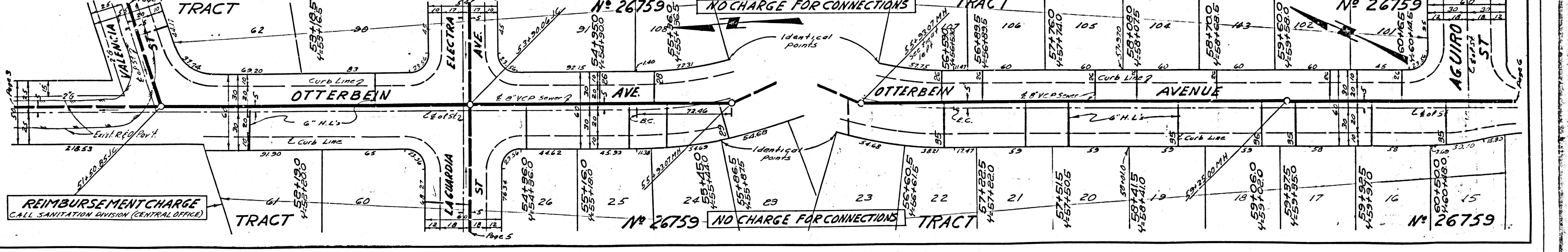
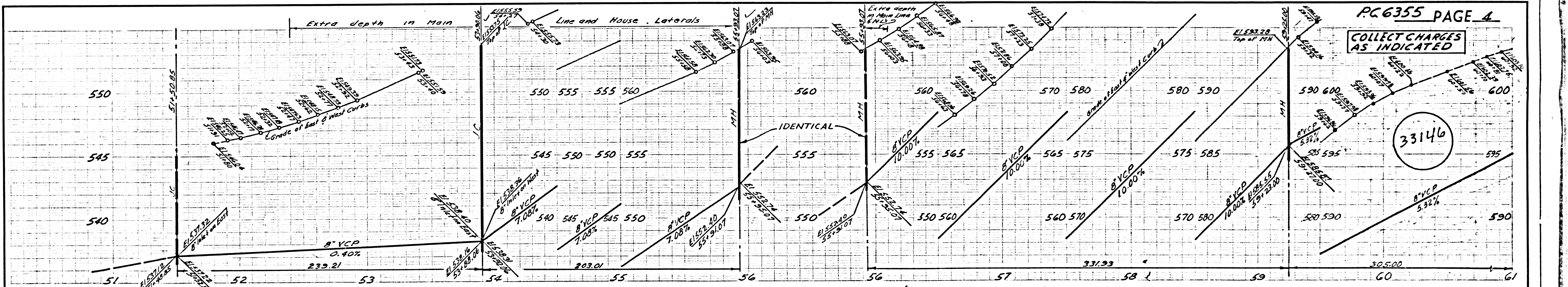
COLLECT CHARGES AS INDICATED

33145



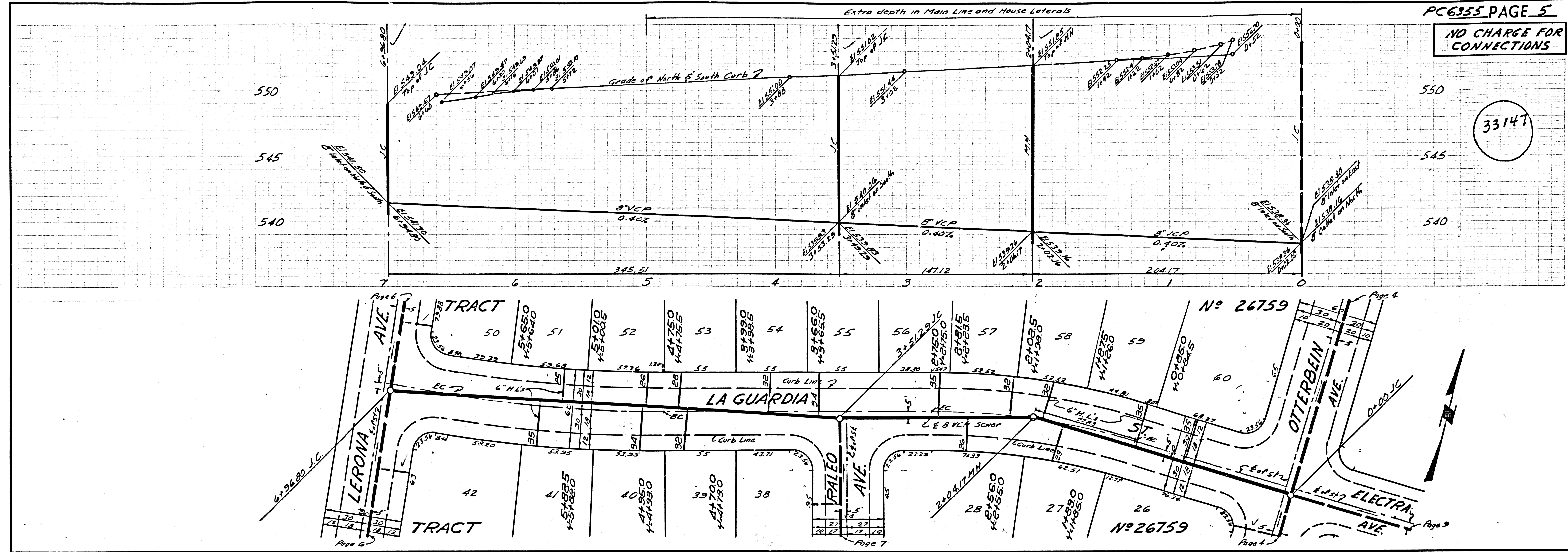
COLLECT CHARGES AS INDICATED

33146



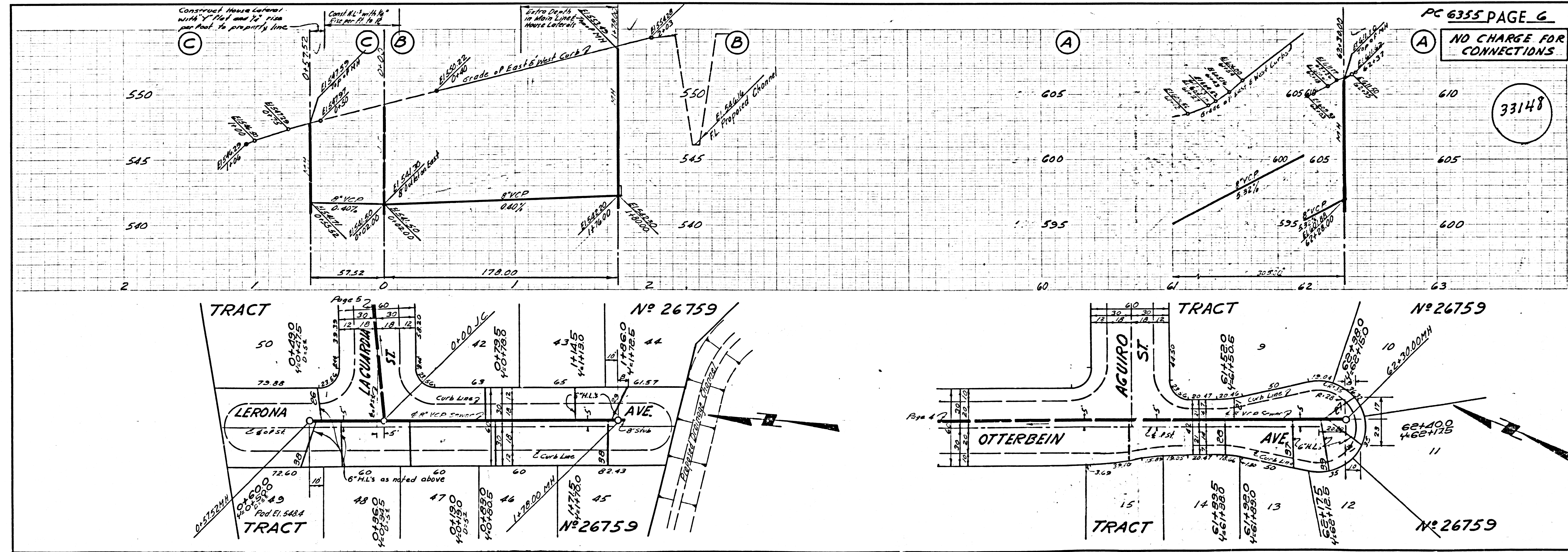
NO CHARGE FOR CONNECTIONS

33147

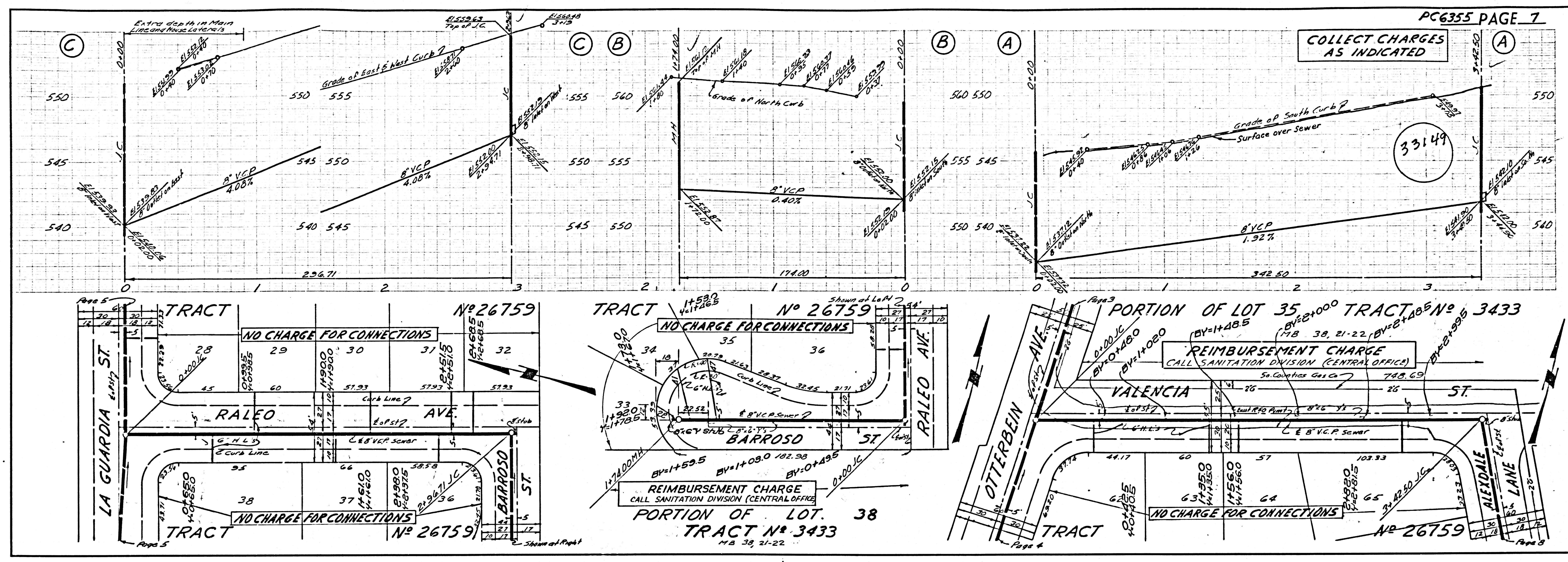


NO CHARGE FOR CONNECTIONS

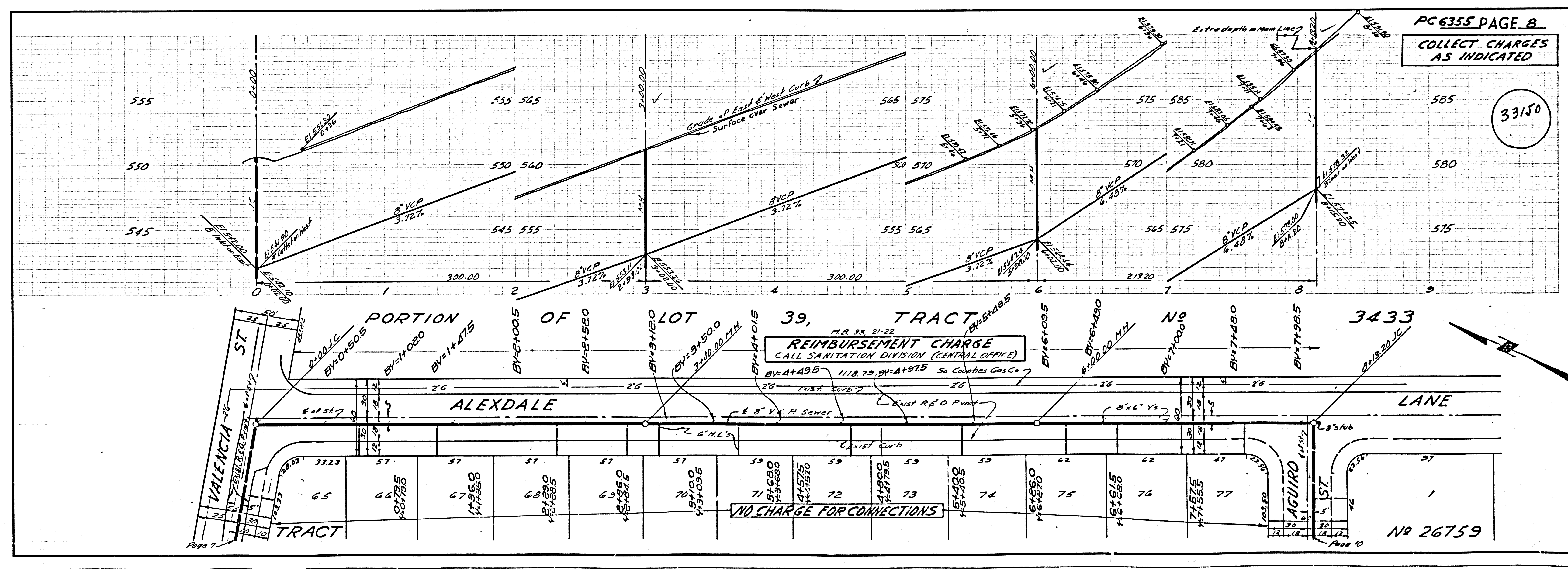
33148



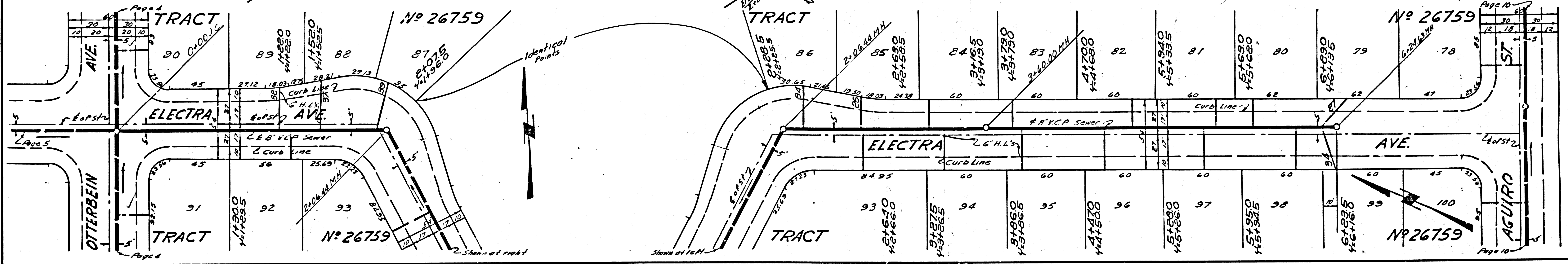
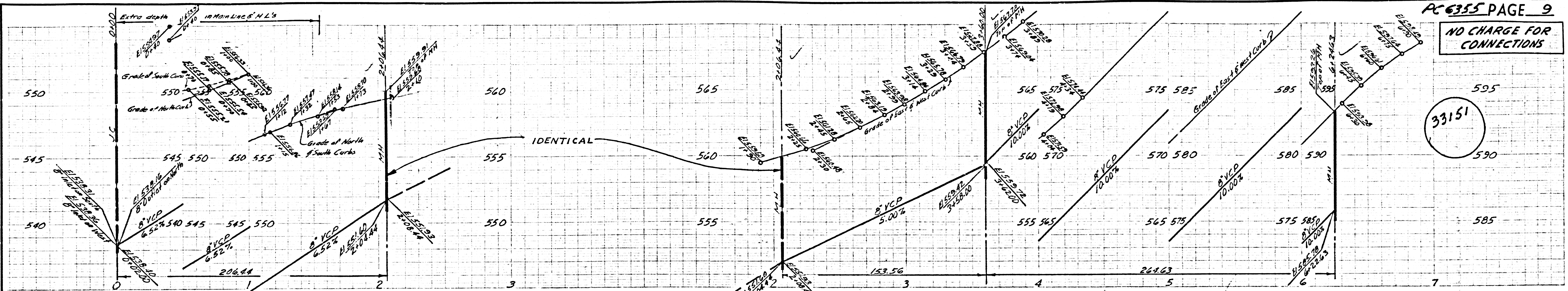
COLLECT CHARGES AS INDICATED



COLLECT CHARGES AS INDICATED



NO CHARGE FOR CONNECTIONS



NO CHARGE FOR CONNECTIONS

