

TO BE CONSTRUCTED IN DEL AMO BLVD.

PRIVATE CONTRACT NO. 6357

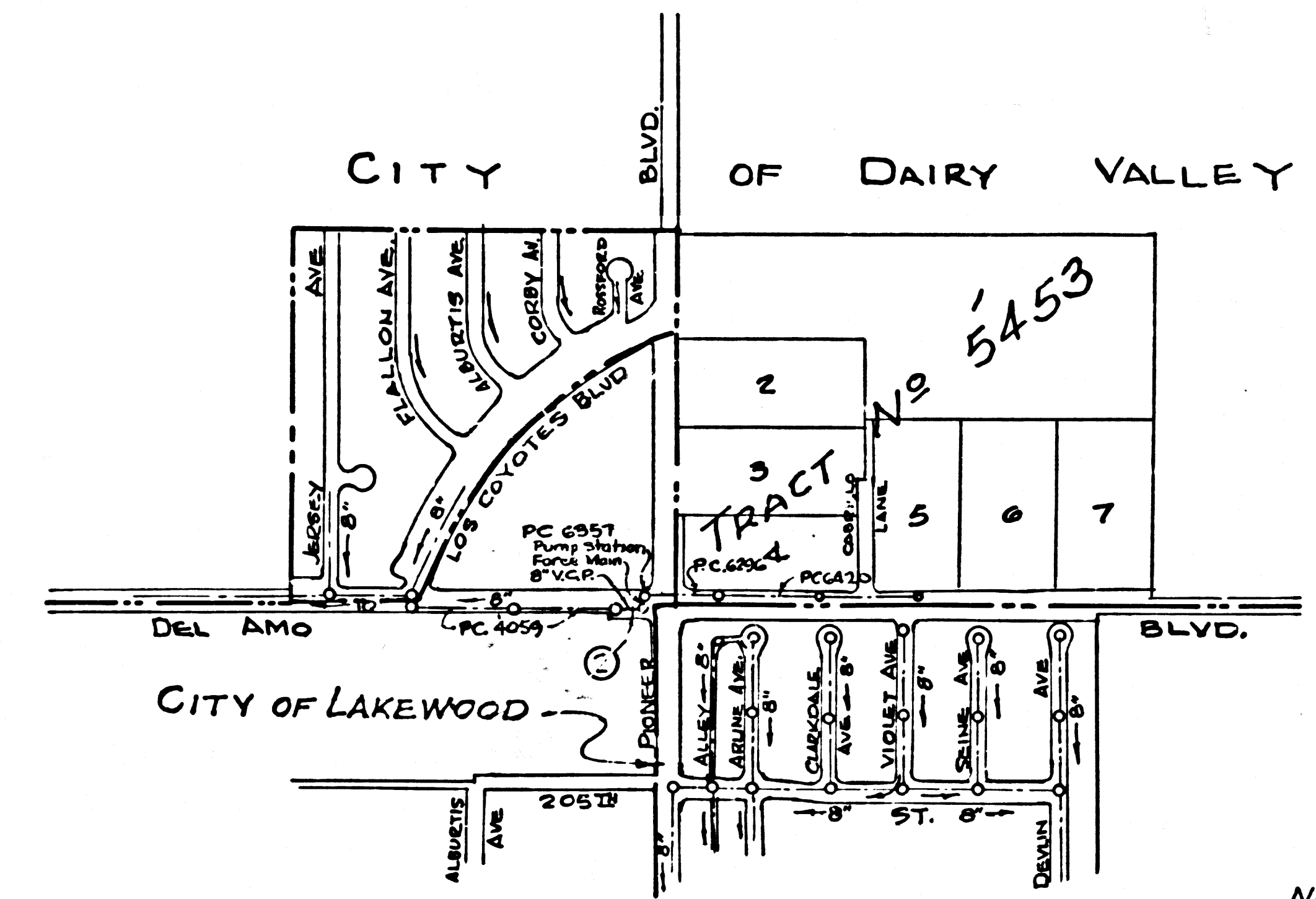
W.S. 31

3 SHEETS; 4 PAGES

SCALE: AS SHOWN
FEB. 1962
PREPARED IN THE OFFICES OF TECHNOLOGICAL ENGINEERING CORP.

By: J.G. Montgomery
REG. C.E. NO. 9152

FOR LEGEND SEE PLAN NO. S-A-44



INDEX MAP
SCALE: 1"=600'
P.C. NO. 6357

NOTIFY THE FOLLOWING UTILITIES PRIOR TO BEGINNING WORK:
1. FOUR CORNERS PIPE LINE COMPANY, MR. N. G. WILSON, NEWMARK 8-0301
2. S.D. CO. GAS COMPANY, JASPER 9-3889
3. GENERAL TELEPHONE COMPANY, MR. C. R. DONLEY, 933-4217
4. SOUTHERN CALIFORNIA EDISON CO., MR. W. J. MAGILL, HE 7-4141
5. SOUTHERN CALIFORNIA WATERS CO., MR. S. McCUFFIN, UN 4-8514

- NOTES:
1. PROVIDE STAKES ON THE PROPERTY LINE OR PROPERTY LINES PRODUCED AT RIGHT ANGLES TO THE SEWER LINE AT THE CENTER LINE OF EACH MANHOLE.
 2. NO REPRESENTATIVE OF THE CITY ENGINEER WILL SURVEY OR LAY OUT ANY PORTION OF THE WORK.
 3. THE PRIVATE ENGINEER SHALL FURNISH THE CITY ENGINEER WITH GRADE SHEETS AND STATIONING FOR ALL HOUSE LATERALS AND TRENCHES AND SHALL PROVIDE STAKES FOR THEM AT THEIR PROPER LOCATIONS WITH STATIONING PLAINLY MARKED. ANY CHANGE IN LOCATION SHALL BE REQUESTED IN WRITING BY THE PRIVATE ENGINEER.
 4. THE PRIVATE ENGINEER SHALL FURNISH THE HOUSE LATERAL DEPTH AT THE PROPERTY LINE BELOW THE TOP OF CURB ELEVATION FOR EACH HOUSE LATERAL ON THE GRADE SHEET.
 5. NO REVISIONS SHALL BE MADE IN THESE PLANS WITHOUT THE APPROVAL OF THE CITY ENGINEER.
 6. USE STANDARD MANHOLE FRAMES AND COVERS, 30" DIA., EXCEPT AS NOTED.
 7. USE EXTRA STRENGTH V.C.P. ALL PIPE IS STANDARD DEPTH.
 8. USE MECHANICAL COMPRESSION JOINTS FOR ALL V.C.P. JOINTS IN MAIN LINE SEWERS AND OVERFLOW LINE PER SPEC'S SEC. 64-14.
 9. RESURFACE ALL TRENCH WITHIN PAVED AREA TO MEET L.A. COUNTY ROAD DEPT. OR CALIF. STATE HIGHWAY REQUIREMENTS IN ACCORDANCE WITH PERMITS.
 10. ENCASE FOUR FEET OF SEWER AT POINTS OF INTERFERENCE WITH POLES, CASE III, S-112.
 11. HOUSE LATERALS TO BE CONSTRUCTED WITH 1/4" RISE PER FOOT TO PROPERTY LINE.
 12. THE S.M.H. SHALL BE BRICK SEWER STRUCTURE. PER S-G-150, S-G-151, PUMP STATION SHALL BE CONSTRUCTED AS SHOWN ON THE PLANS.
 13. FOR ALLOWABLE LEAKAGE TEST IN V.C.P. USE FORMULA: $W = 2.47 \times 10^{-5} \times L \times D^3 \times P$. SEE PUMP STA. SPEC'S FOR LEAKAGE TEST OTHER THAN V.C.P.
 14. MANHOLE TOPS IN UNIMPROVED RIGHTS-OF-WAY TO BE SIX INCHES ABOVE FINISHED GRADE.
 15. THE CONTRACTOR SHALL NOTIFY THE CONSTRUCTION DIVISION BY TELEPHONE, MADRON 5-4141, EXT. 8191 AT LEAST TWENTY-FOUR HOURS BEFORE STARTING ANY WORK UNDER THIS CONTRACT.
 16. STANDARD SPECIFICATIONS DATED MAY 28, 1962, ON FILE IN THE CITY HALL, APPLY IN THE CONSTRUCTION OF THIS PROJECT.
 17. USE MECHANICAL COMPRESSION JOINTS FOR ALL V.C.P. HOUSE LATERALS PER SPEC'S SEC. 38 AND 49.
 18. ALL STATE AND LOCAL TRENCH SAFETY ORDERS WILL BE RIGIDLY ENFORCED.
 19. CONTRACTOR MUST OBTAIN PERMIT TO EXCAVATE IN CITY OF LAKEWOOD STREETS FROM CITY OF LAKEWOOD.
 20. SPECIFICATIONS FOR CONSTRUCTION OF SEWAGE PUMPING STATION & APPURTENANCES THEREOF SHALL APPLY IN THIS CONSTRUCTION IN ADDITION TO STANDARD SPECIFICATIONS NOTED ABOVE.

NO CONNECTIONS FOR THE DISPOSAL OF INDUSTRIAL WASTES SHALL BE MADE TO SEWERS SHOWN ON THESE DRAWINGS WITHOUT WRITTEN PERMISSION FROM THE CHIEF ENGINEER AND GENERAL MANAGER OF THE COUNTY SANITATION DISTRICTS.

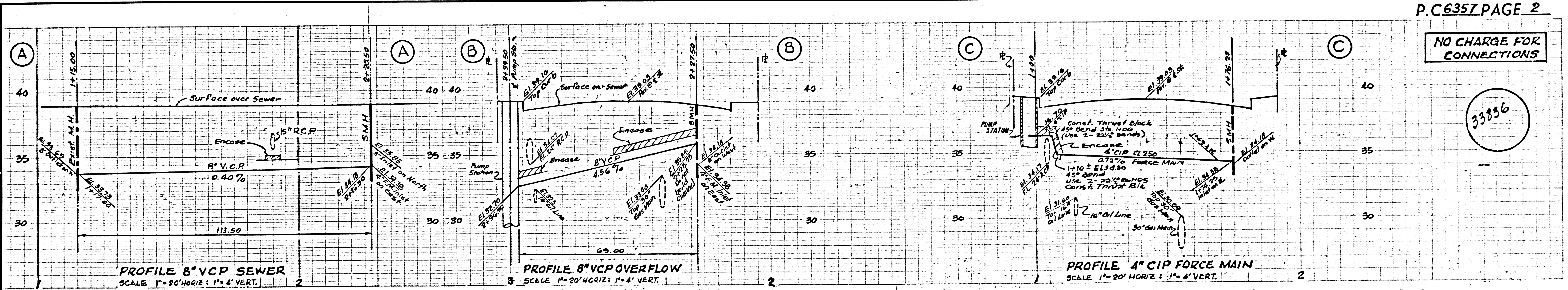
CONNECTION CHARGES AS INDICATED
Ralph Schepa

APPROVED BY Robert A. Moore 3-12-63
INDUSTRIAL WASTE DIVISION

NOTE: GRADES TO WHICH THIS IMPROVEMENT IS TO BE CONSTRUCTED ARE SHOWN ON PLANS AND PROFILES. GRADE POINTS FOR TOP OF CURBS, CENTER LINE OF STREETS OR CENTER LINE OF ALLEYS ARE SHOWN BY CIRCLES ON PROFILES. AT ALL POINTS BETWEEN DESIGNATED POINTS THE GRADE SHALL BE ESTABLISHED SO AS TO CONFORM TO A STRAIGHT LINE DRAWN BETWEEN SAID DESIGNATED POINTS. ELEVATIONS ARE IN FEET ABOVE U.S.C. & G.S. SEA LEVEL DATUM OF 1929. THIS DRAWING AND THE DATA HEREON ARE HEREBY MADE A PART OF THE SPECIFICATIONS. WORK SHALL BE CONSTRUCTED ACCORDING TO SPECIFICATIONS ON FILE IN THE OFFICE OF THE CITY ENGINEER AND SHALL BE PROSECUTED ONLY IN THE PRESENCE OF THE CITY ENGINEER. BEFORE WORK CAN BE STARTED, THE CONTRACTOR MUST OBTAIN A PERMIT TO EXCAVATE IN CITY STREETS FROM THE CITY OF LAKEWOOD AND MAKE A DEPOSIT WITH THE CITY OF DAIRY VALLEY THE CITY OF LAKEWOOD SUFFICIENT TO COVER THE COST OF CONSTRUCTION INSPECTION AND RECORD PLANS. APPROVAL OF THIS PLAN BY THE CITY OF DAIRY VALLEY DOES NOT CONSTITUTE A REPRESENTATION AS TO THE ACCURACY OF THE LOCATION OF OR THE EXISTENCE OR NON-EXISTENCE OF ANY UNDERGROUND UTILITY PIPE, OR STRUCTURE WITHIN THE LIMITS OF THIS PROJECT. THIS NOTE APPLIES TO ALL PAGES. IF WORK IS TO BE DONE IN A STATE HIGHWAY, A PERMIT MUST BE OBTAINED FROM THE STATE OF CALIFORNIA, DIVISION OF HIGHWAYS, 120 SOUTH SPRING STREET.

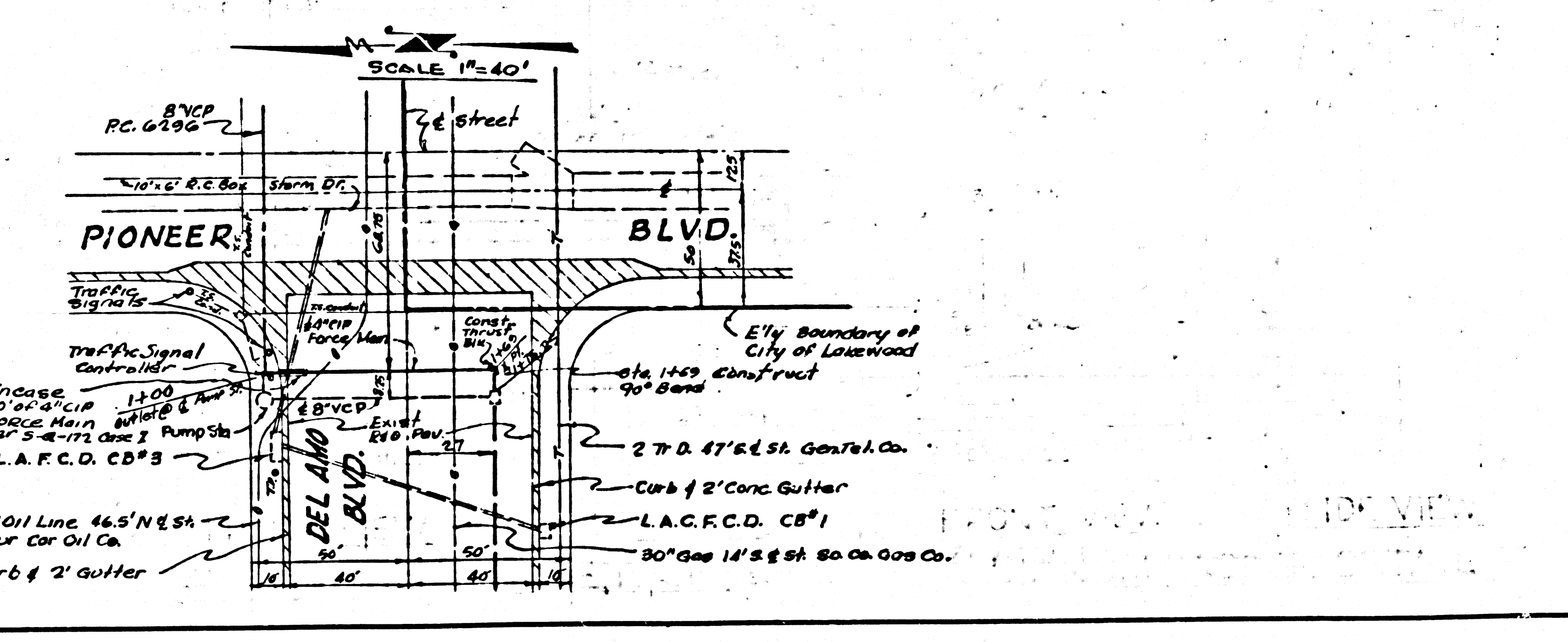
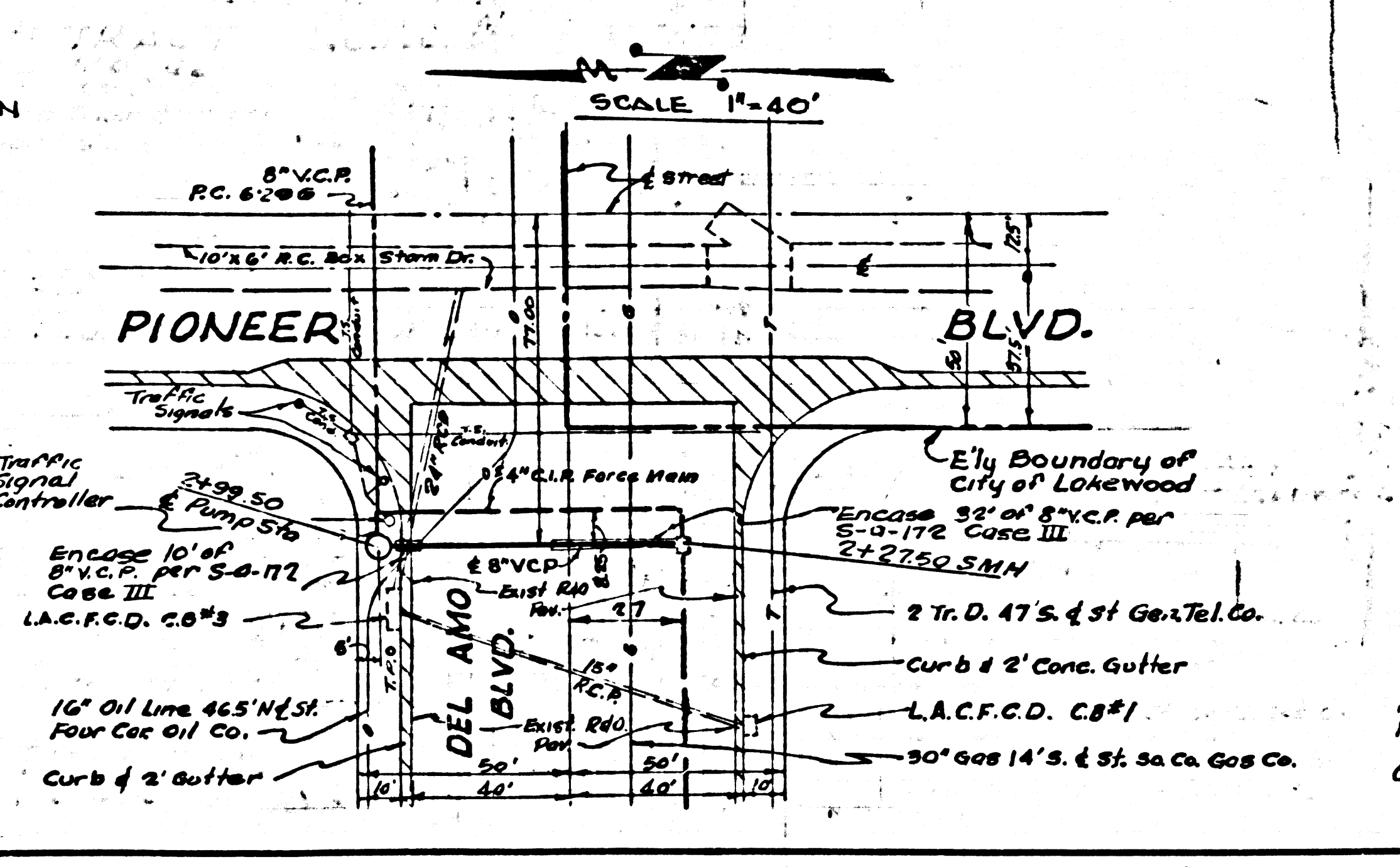
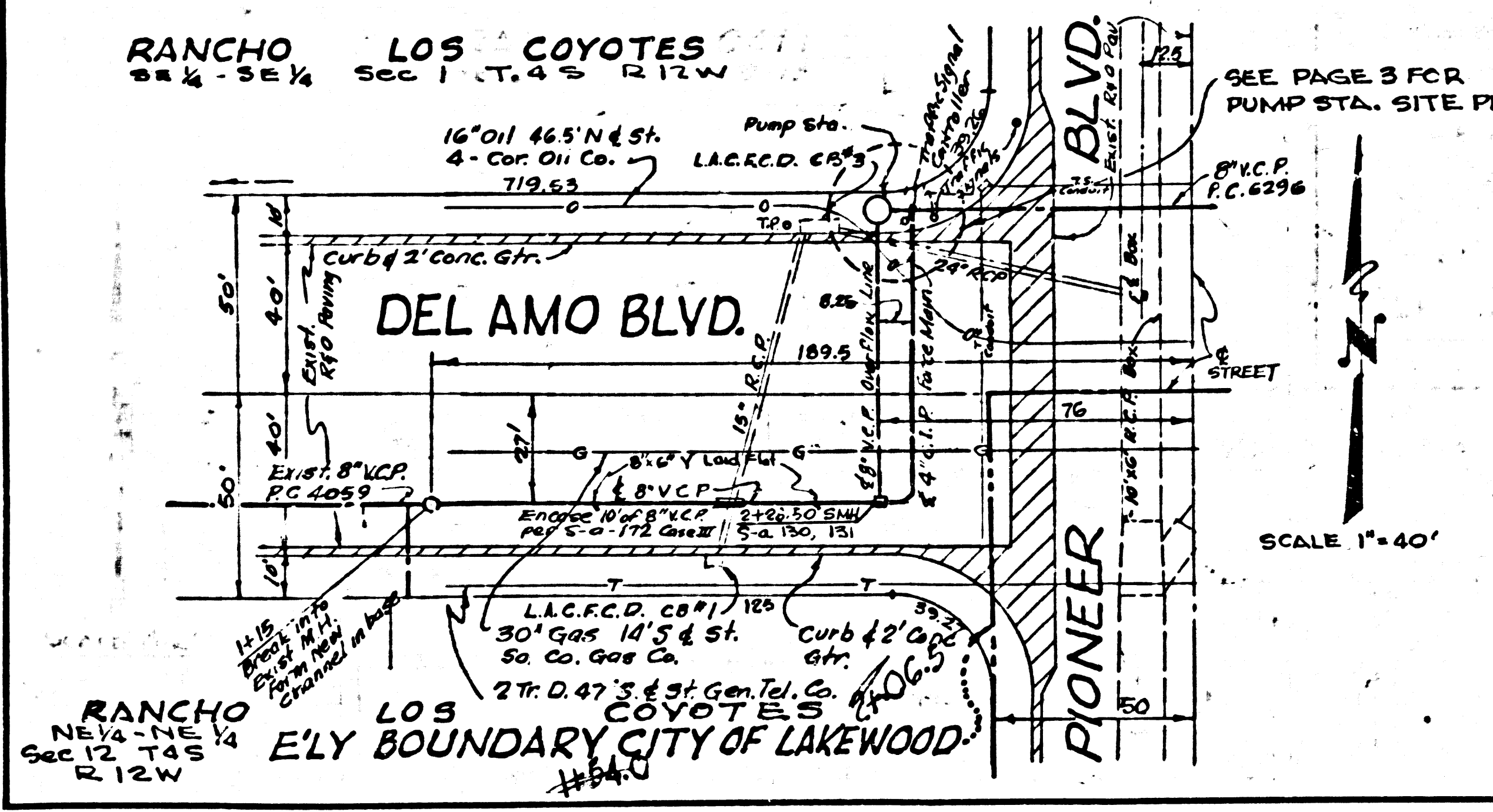
CITY OF DAIRY VALLEY, CALIFORNIA
APPROVED JOHN A. LAMBE CITY ENGINEER, CITY OF LAKEWOOD CO. SAN. DIST. NO. 19
APPROVED J.D. PARKER, CHIEF ENGINEER
BY: J.G. Montgomery ASST. SANITATION ENGINEER
CHECKED BY: Ralph Schepa OFFICE ENGINEER
OFFICE OF CITY ENGINEER, REG. C.E. NO. 13906

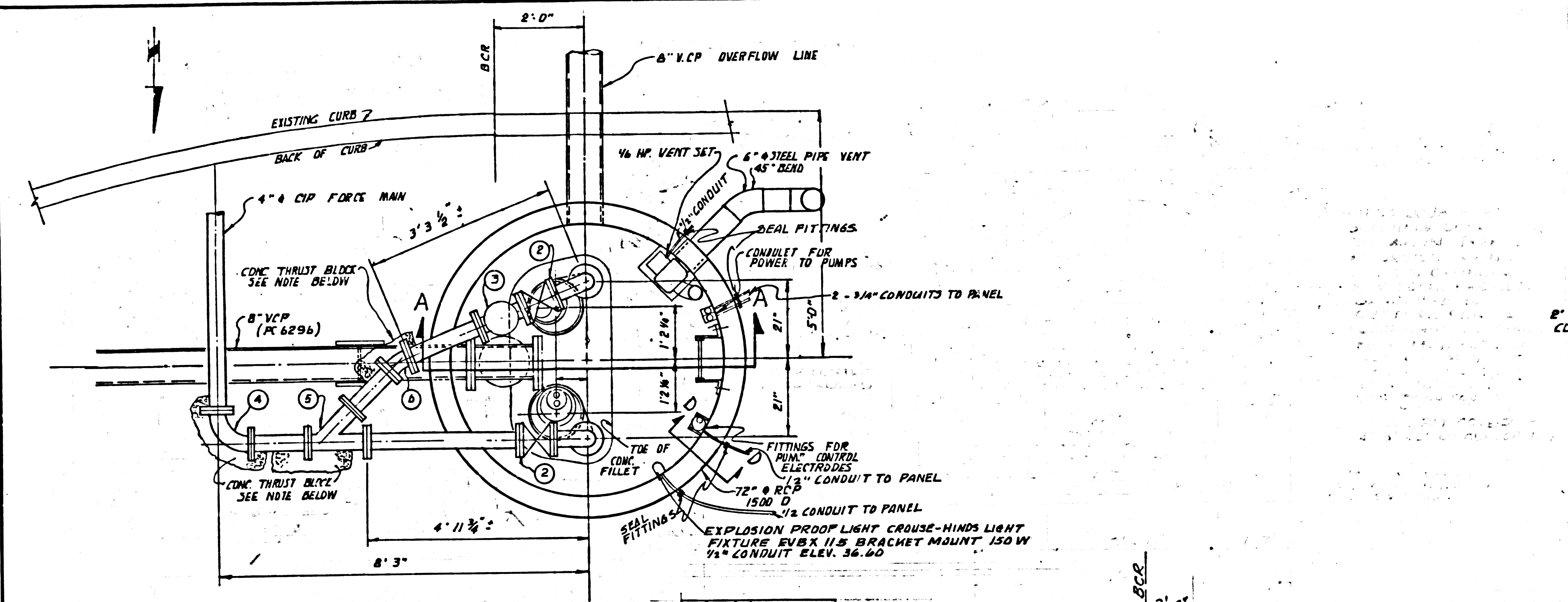
DATE	REVISIONS	BY	APPROVED BY
4-17-62	REVISIONS TO PUMP STA.	J.G.M.	J.D.P.
	REVISIONS	J.G.M.	J.D.P.



NO CHARGE FOR CONNECTIONS

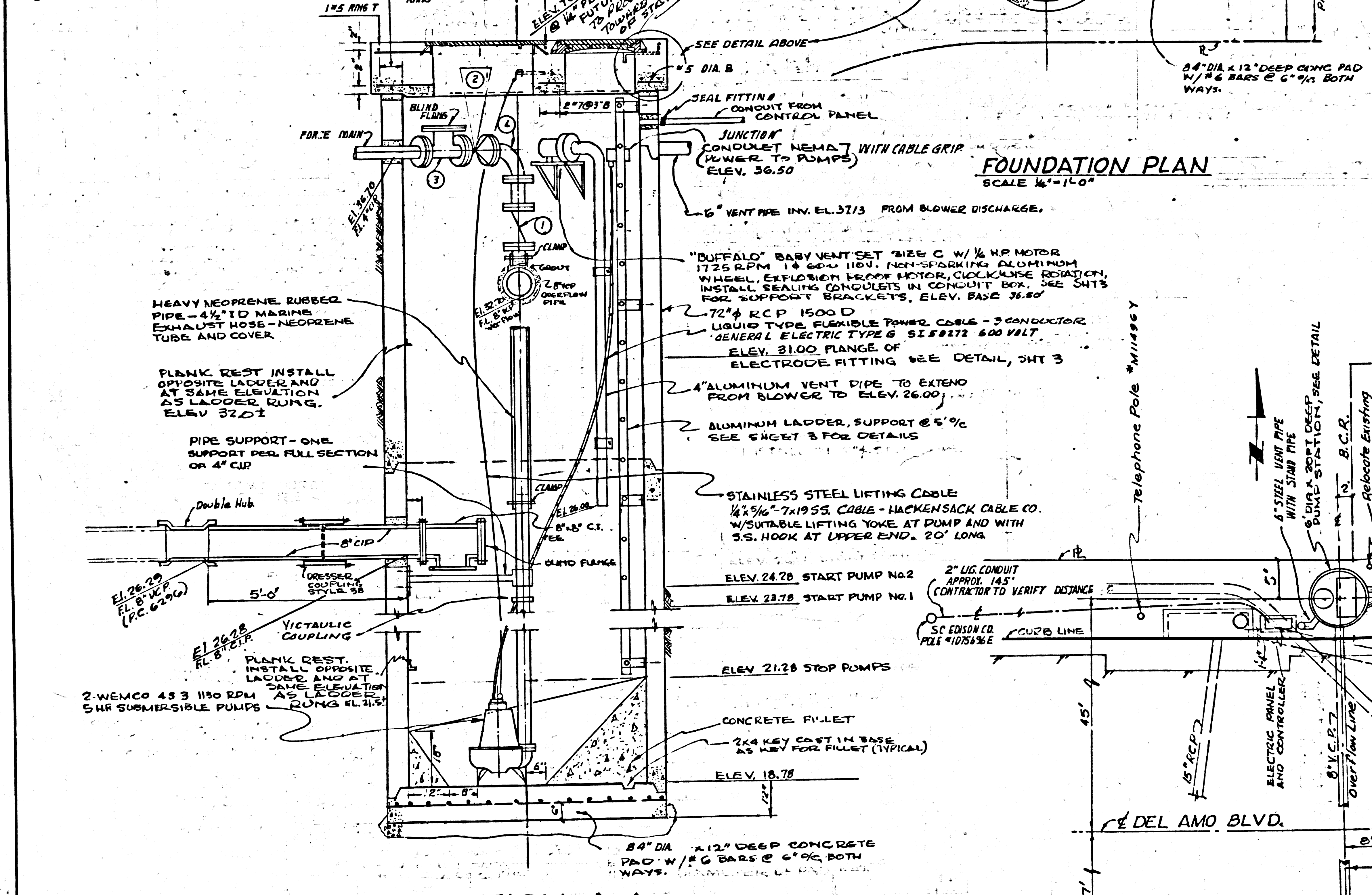
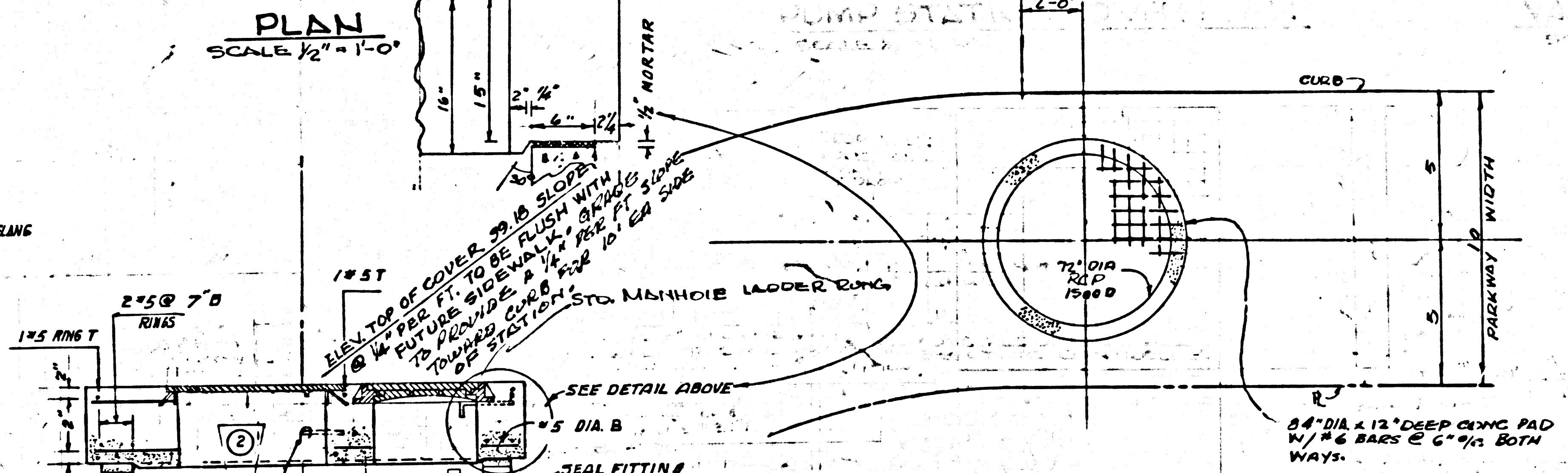
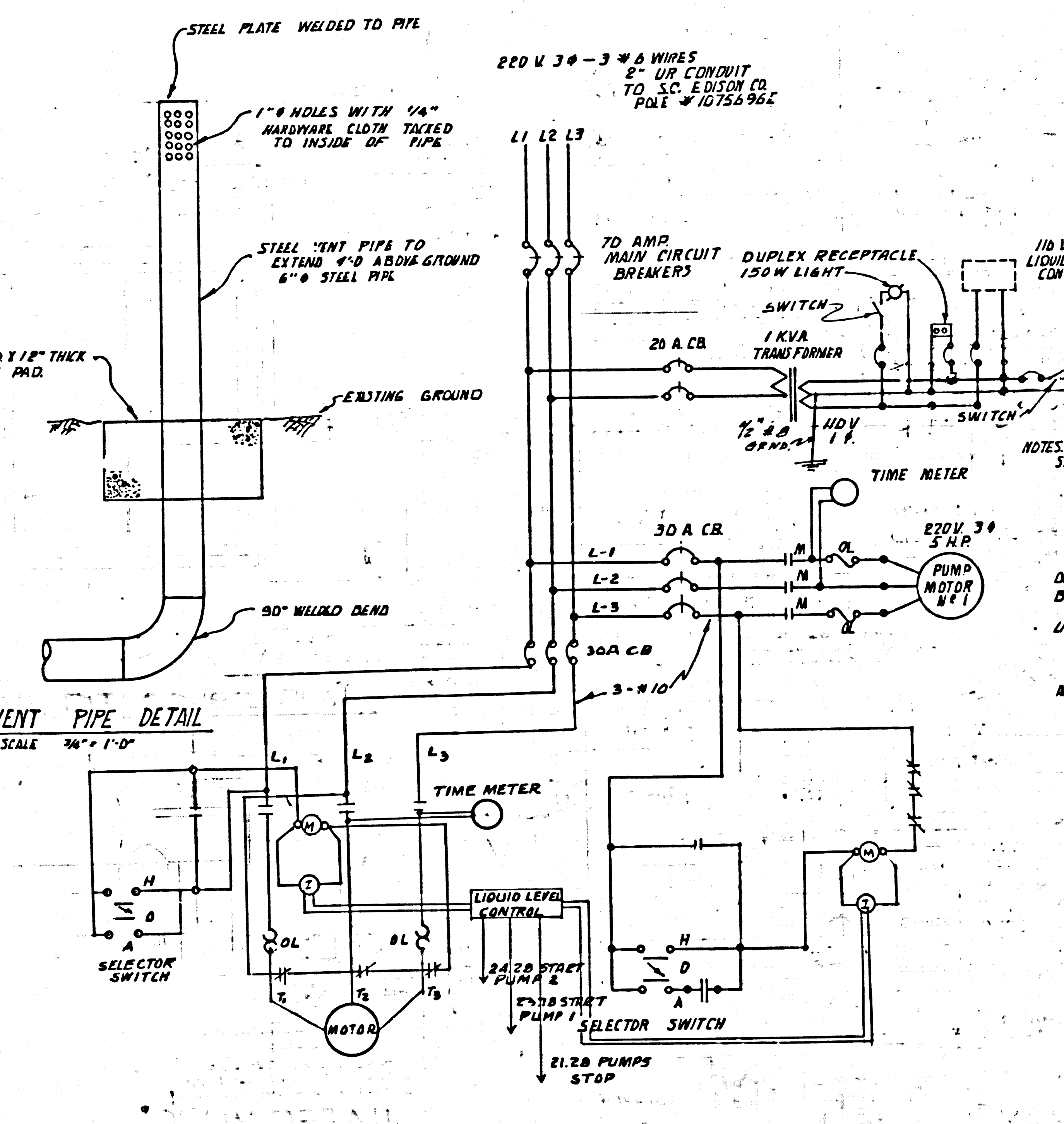
33836





NOTE: THE CONTRACTOR SHALL POUR CONCRETE THRUST BLOCKS AT ALL ANGULAR POINTS IN FORCE MAIN GREATER THAN 10" THROTT BLOCKS SHALL BE POURED BETWEEN PIPE AND OUTSIDE EDGE OF TRENCH WITH A THICKNESS OF NOT LESS THAN THE O.D. OF THE PIPE AND MIN LENGTH OF 2 FEET

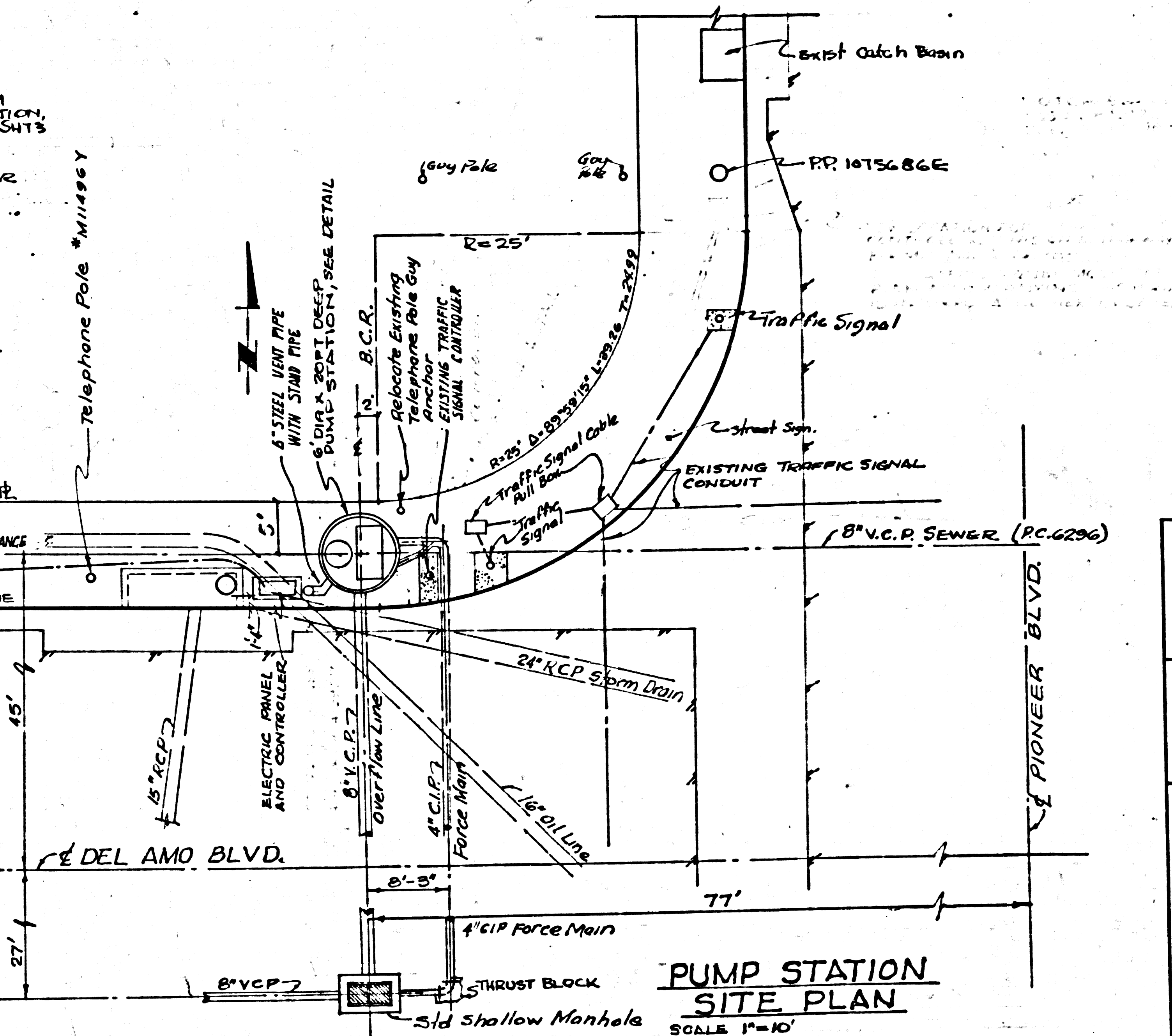
- 1 4" CHECK VALVE
- 2 4" GATE VALVE
- 3 4" V.C.P. TEE UP WITH BLIND FLANG
- 4 4" CIP 90° LONG RADIUS BEND
- 5 4" CIP LATERAL
- 6 4" CIP 22 1/2" BEND



FOUNDATION PLAN SCALE 1/4" = 1'-0"

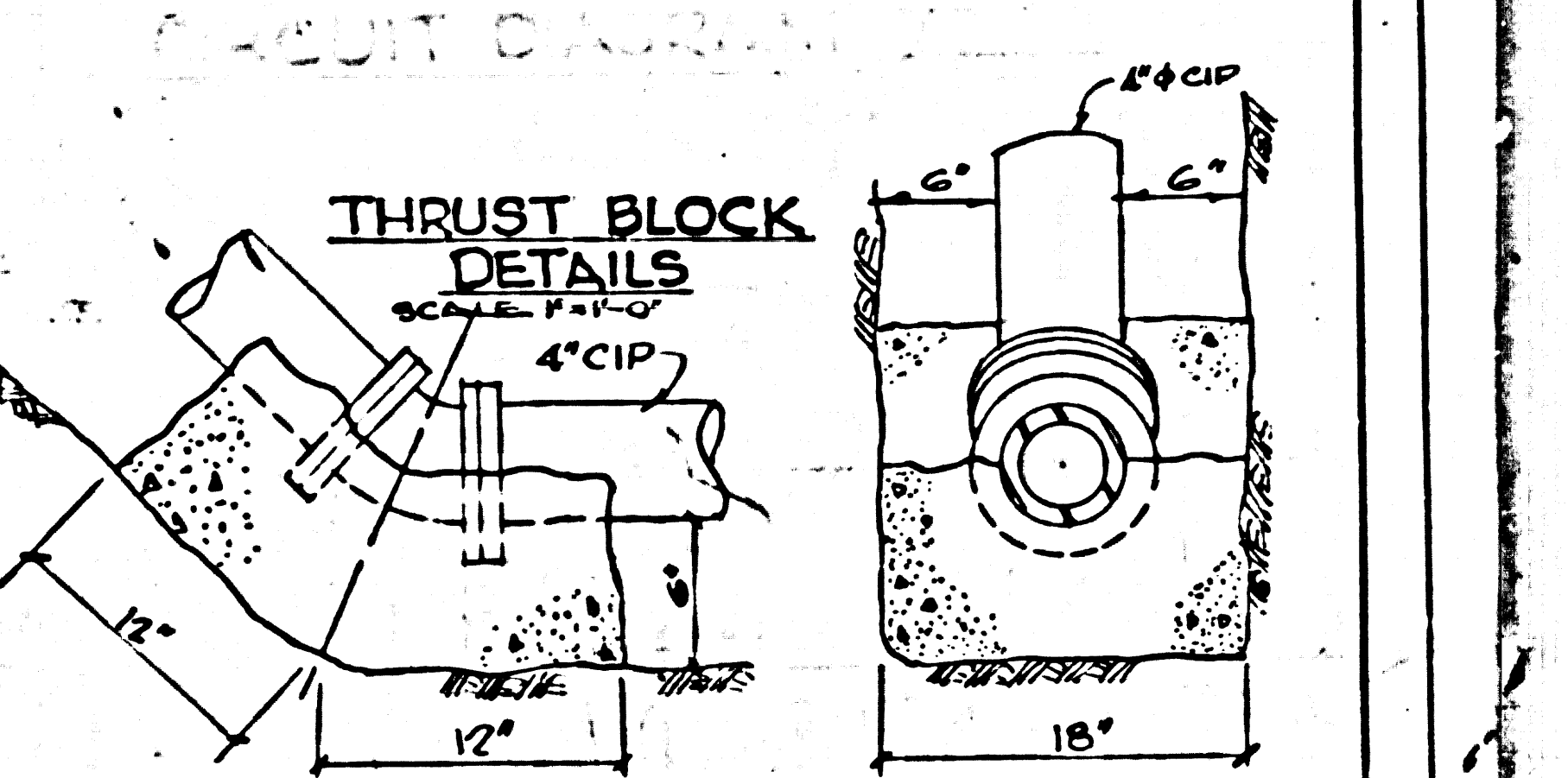
SECTION A-A SCALE 1/2" = 1'-0"

NO.	GENERAL REVISIONS	DATE	REVISION	BY	APPROV.
1	GENERAL REVISIONS			RRW	

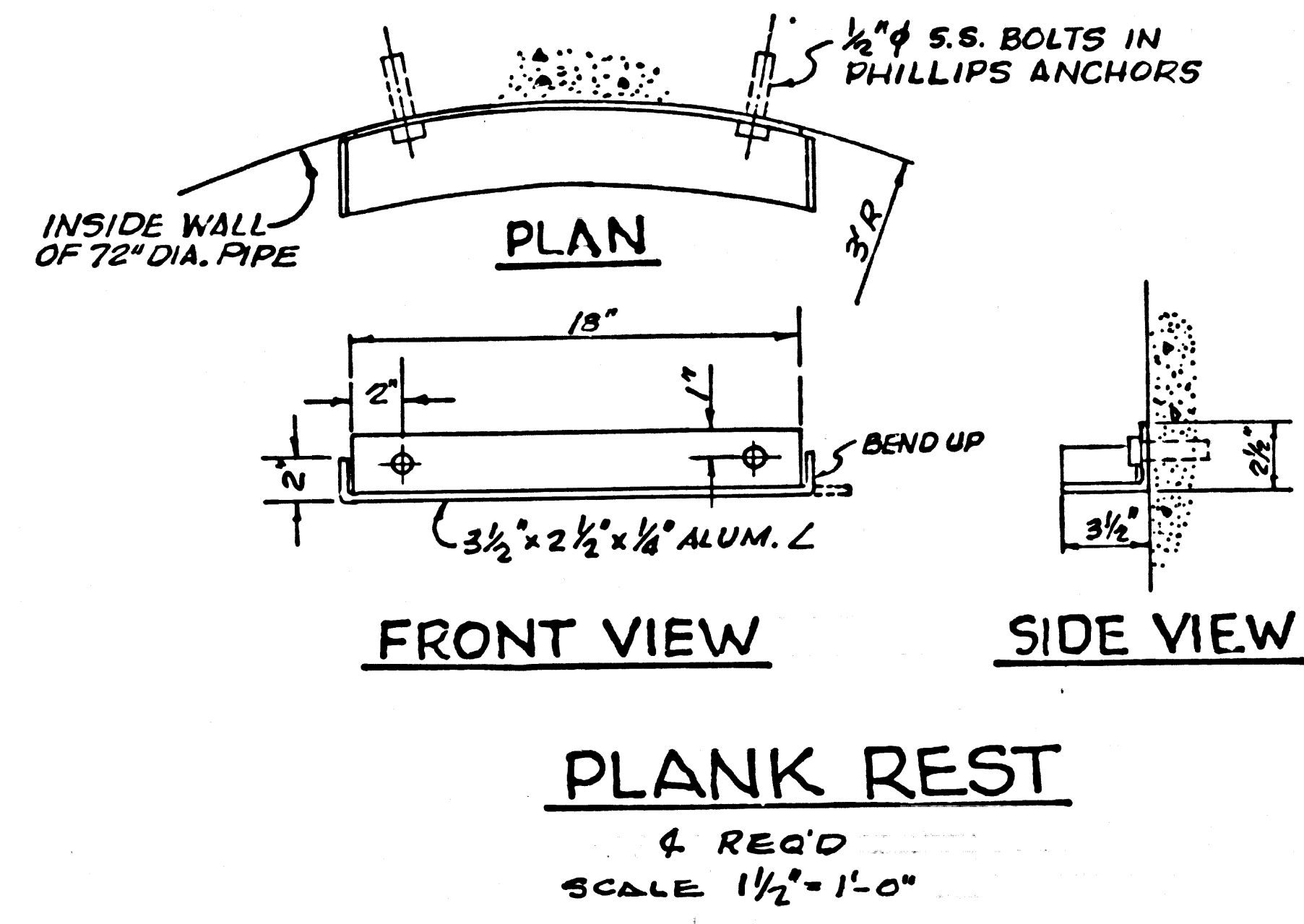
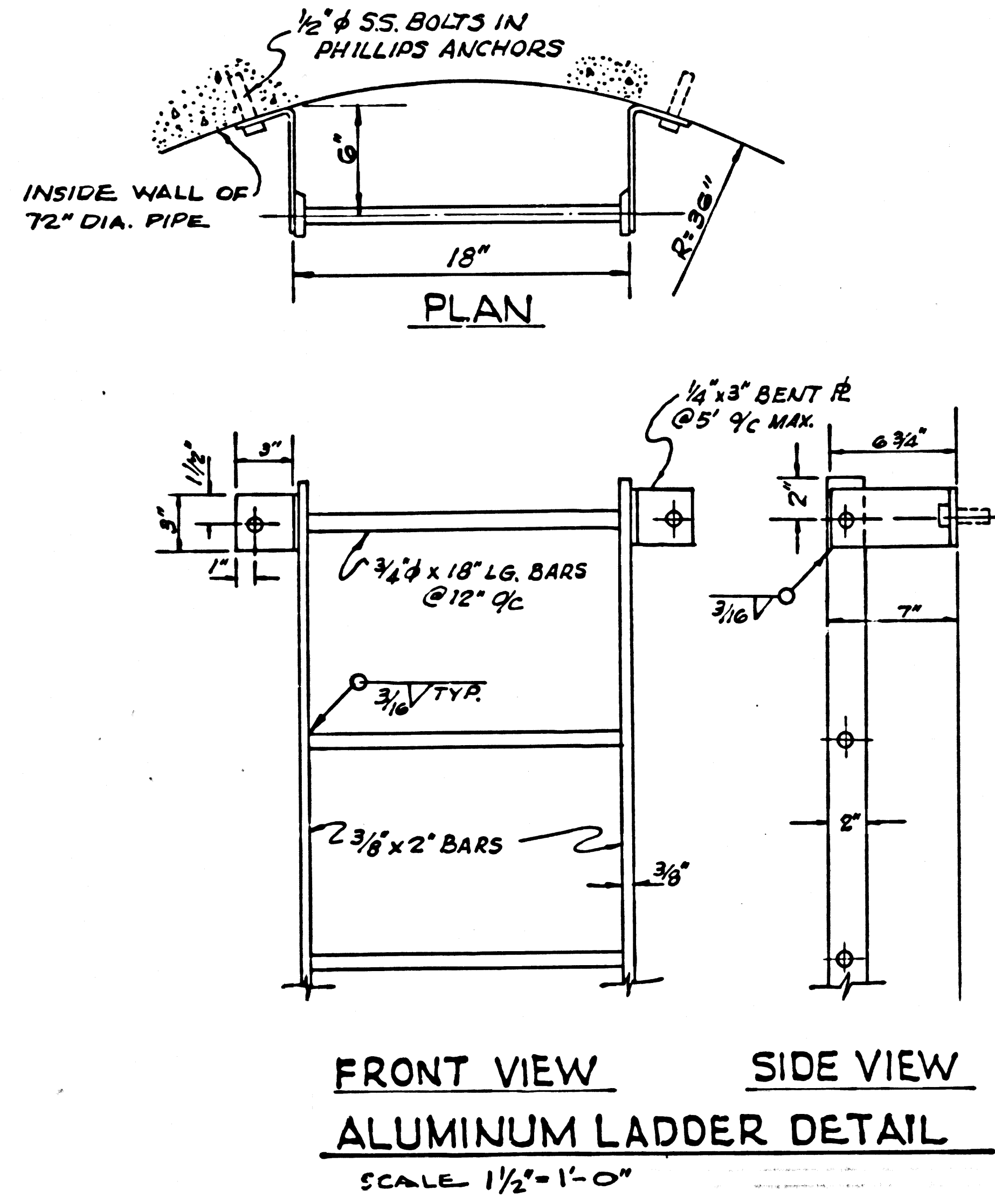


PUMP STATION SITE PLAN SCALE 1" = 10'

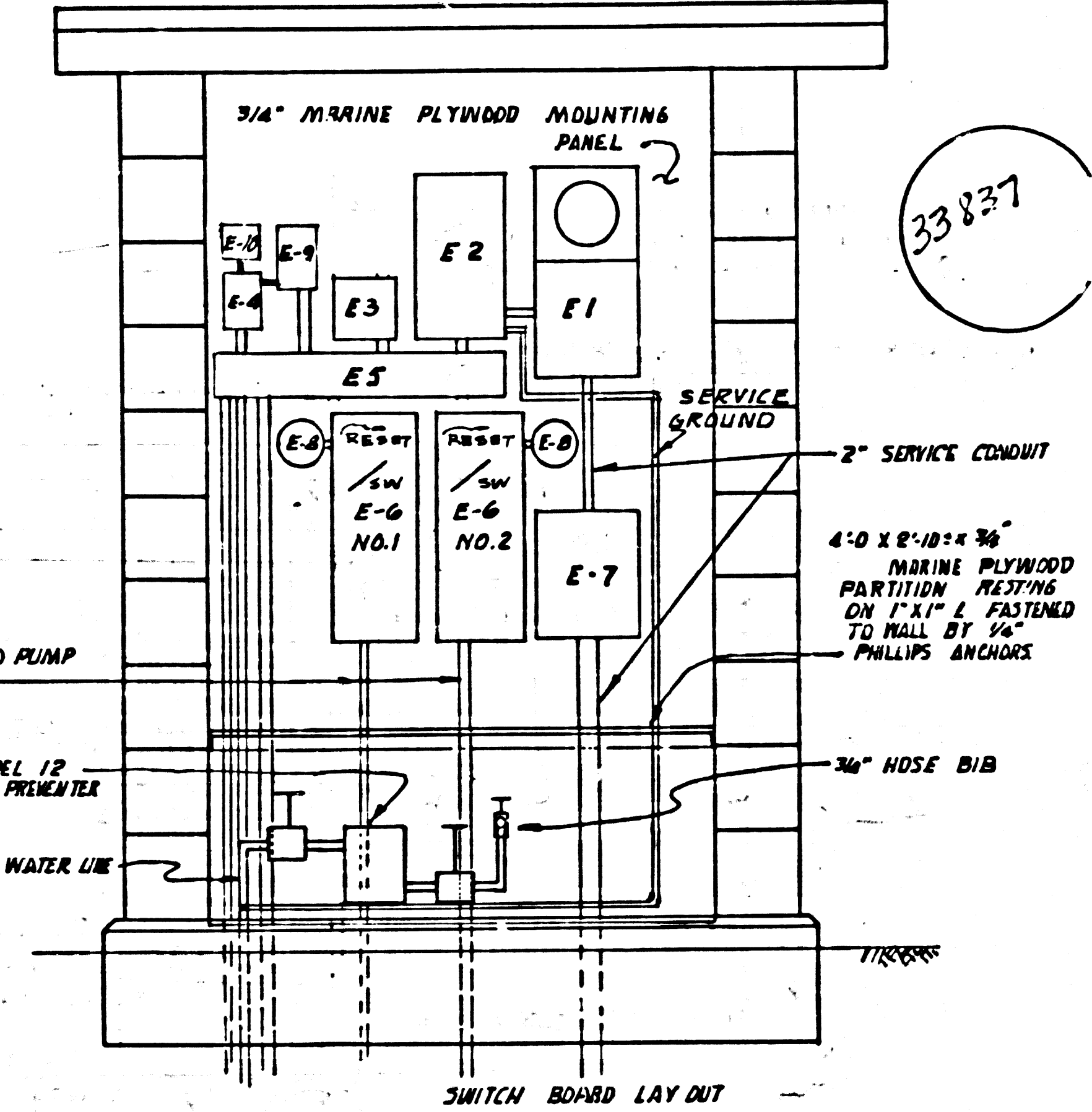
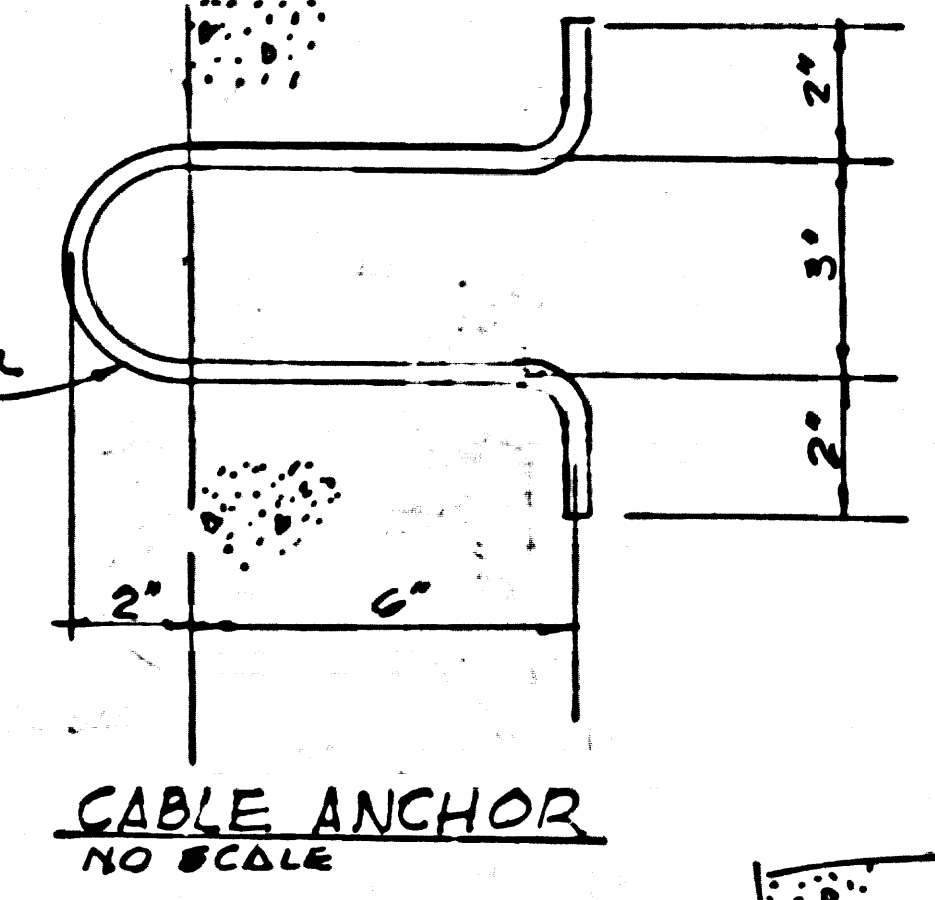
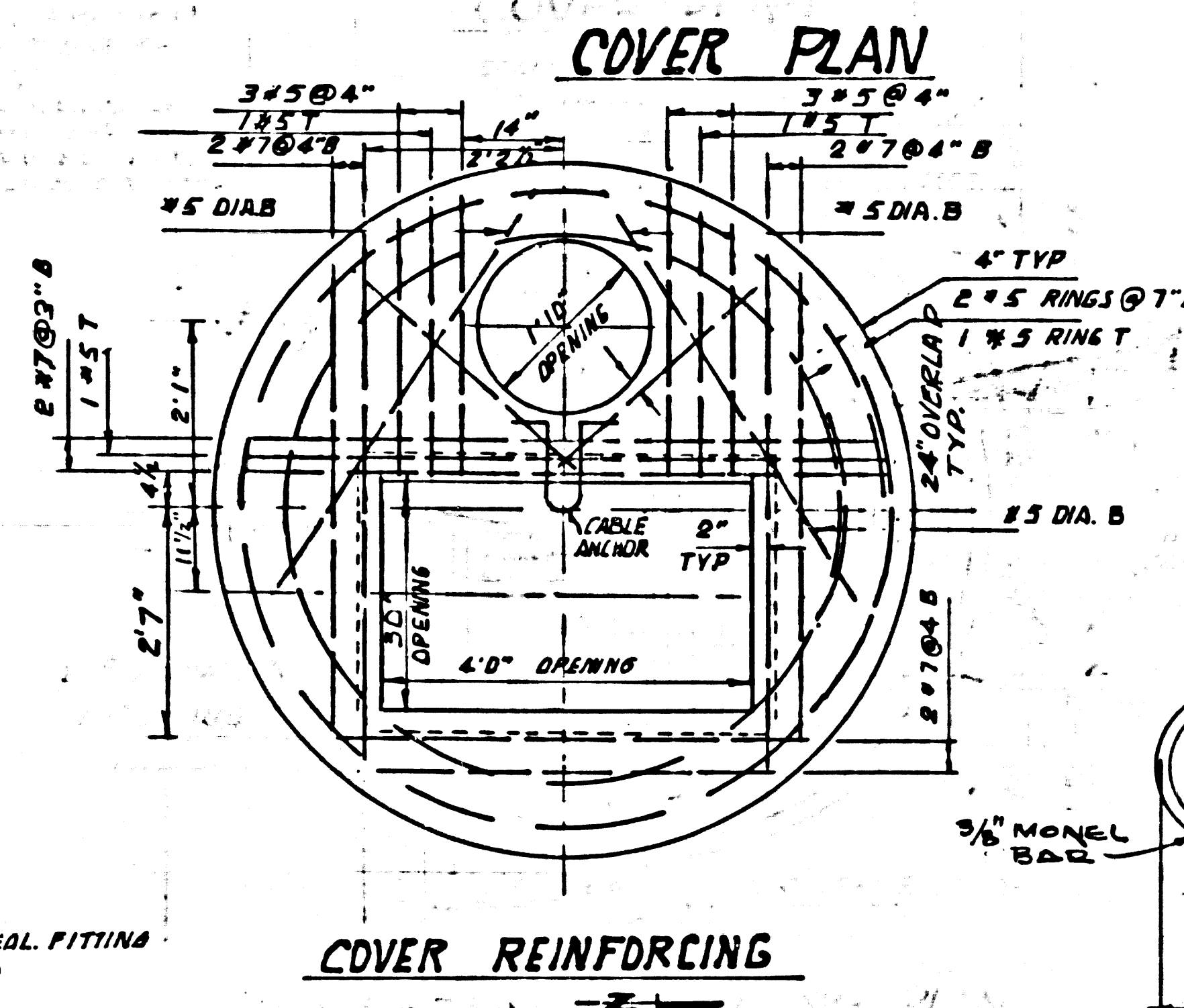
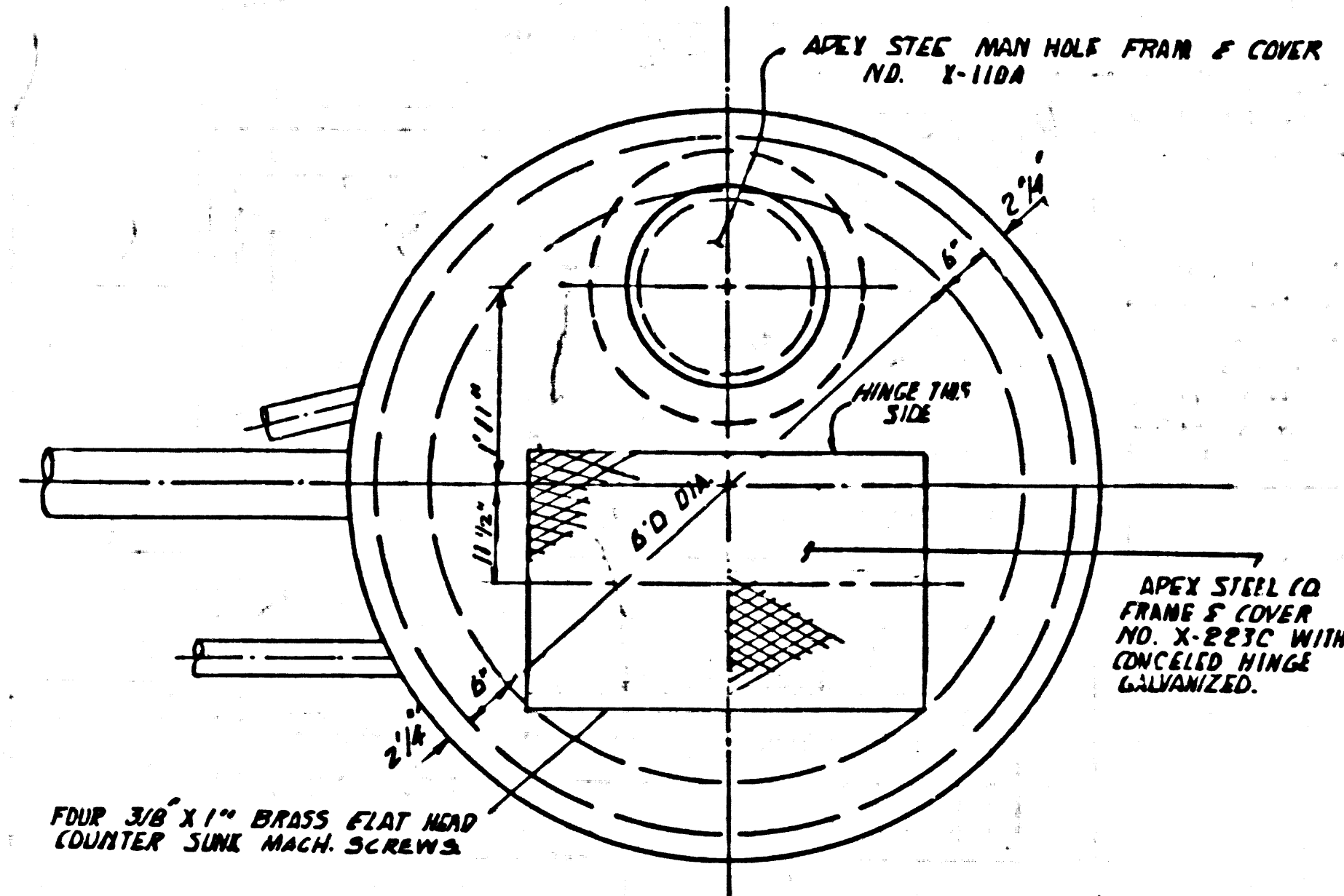
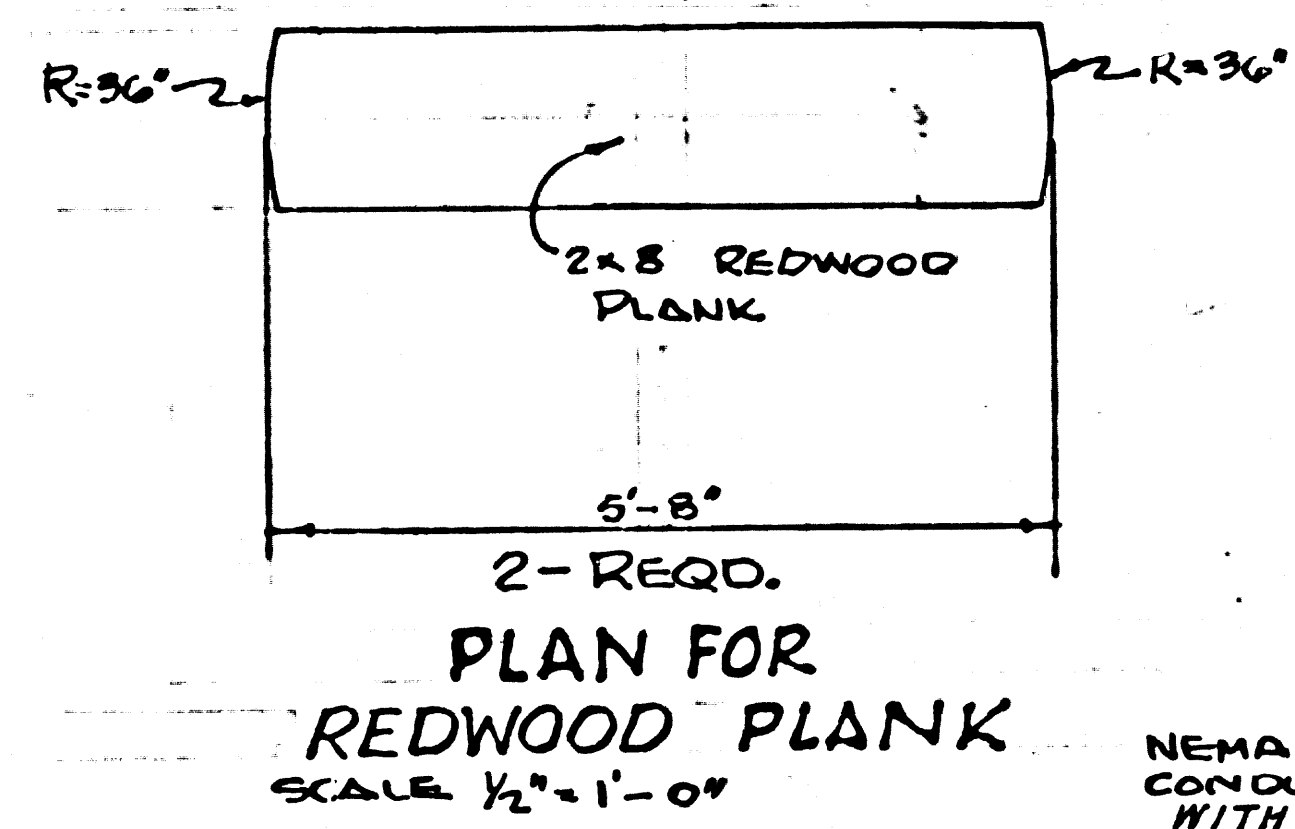
NOTES:
1. THE BLOWER AND LIGHT SHALL BE CONTROLLED BY A MANUAL SWITCH IN THE ELECTRICAL CONTROL CABINET.
2. A PHOTOSTAT OF THE WIRING DIAGRAM SHOWN ON THE APPROVED SHOP DRAWING SHALL BE MOUNTED UNDER A TRANSPARENT COVER BESIDE THE PANEL BOARD.



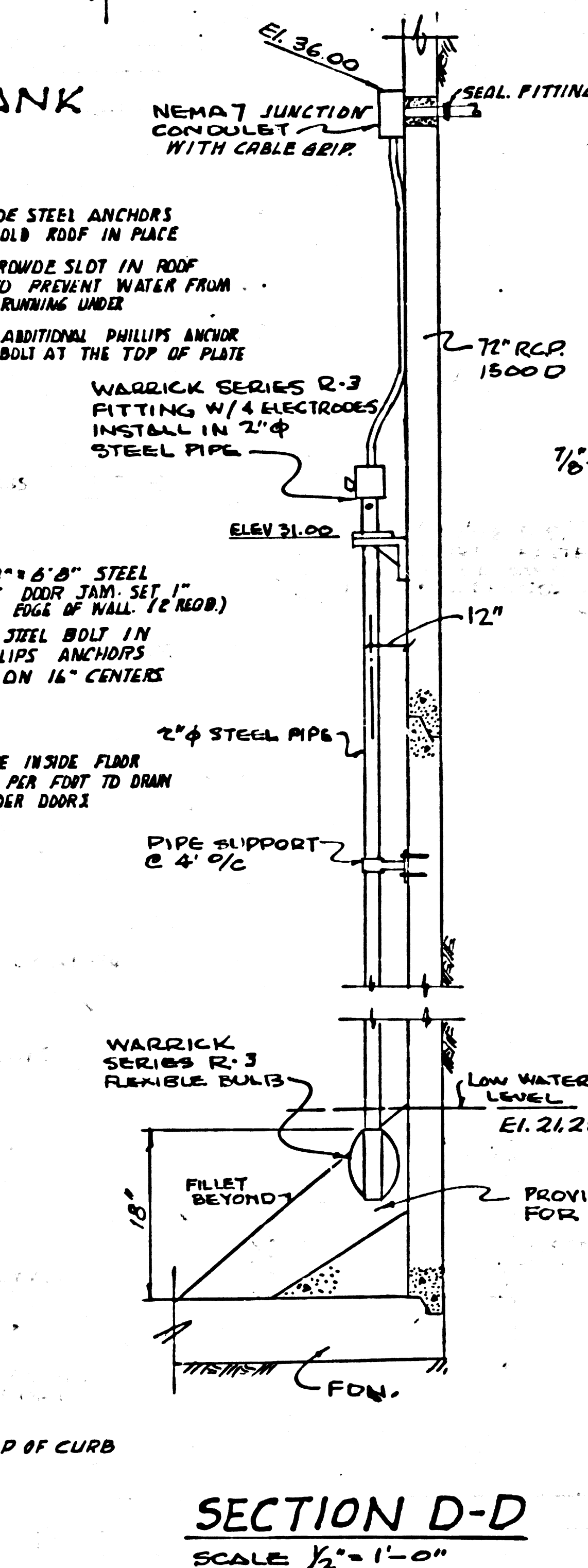
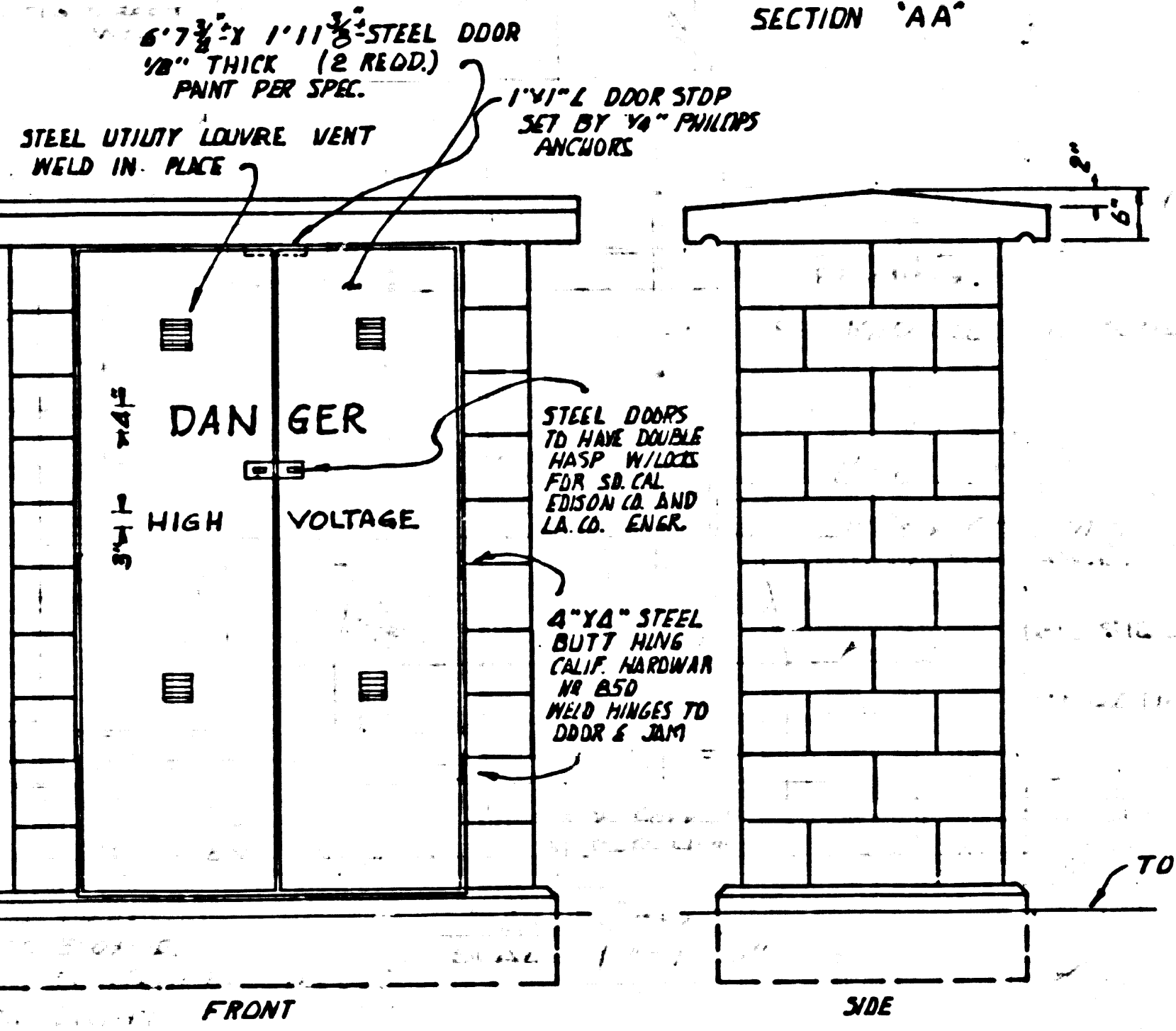
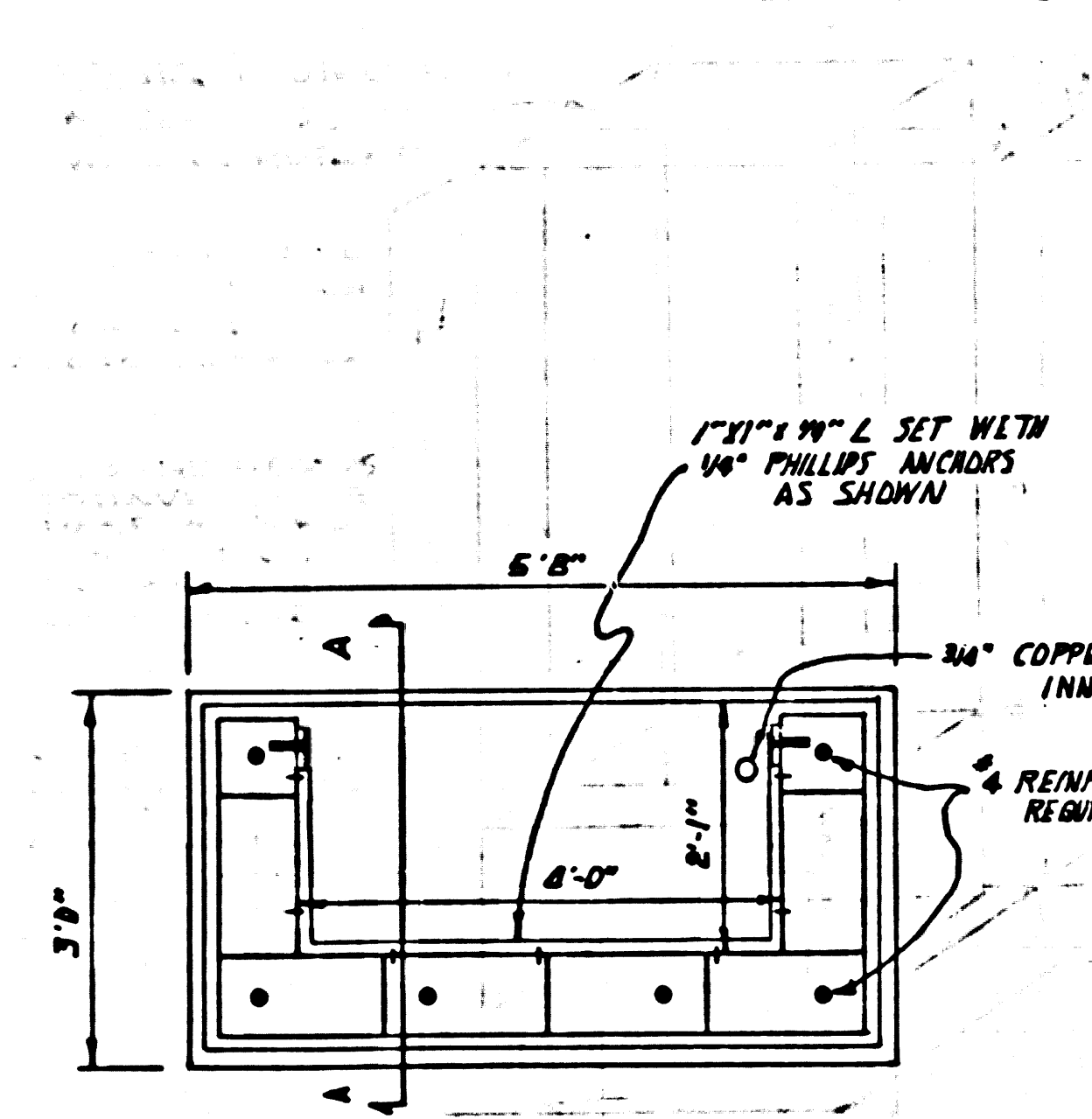
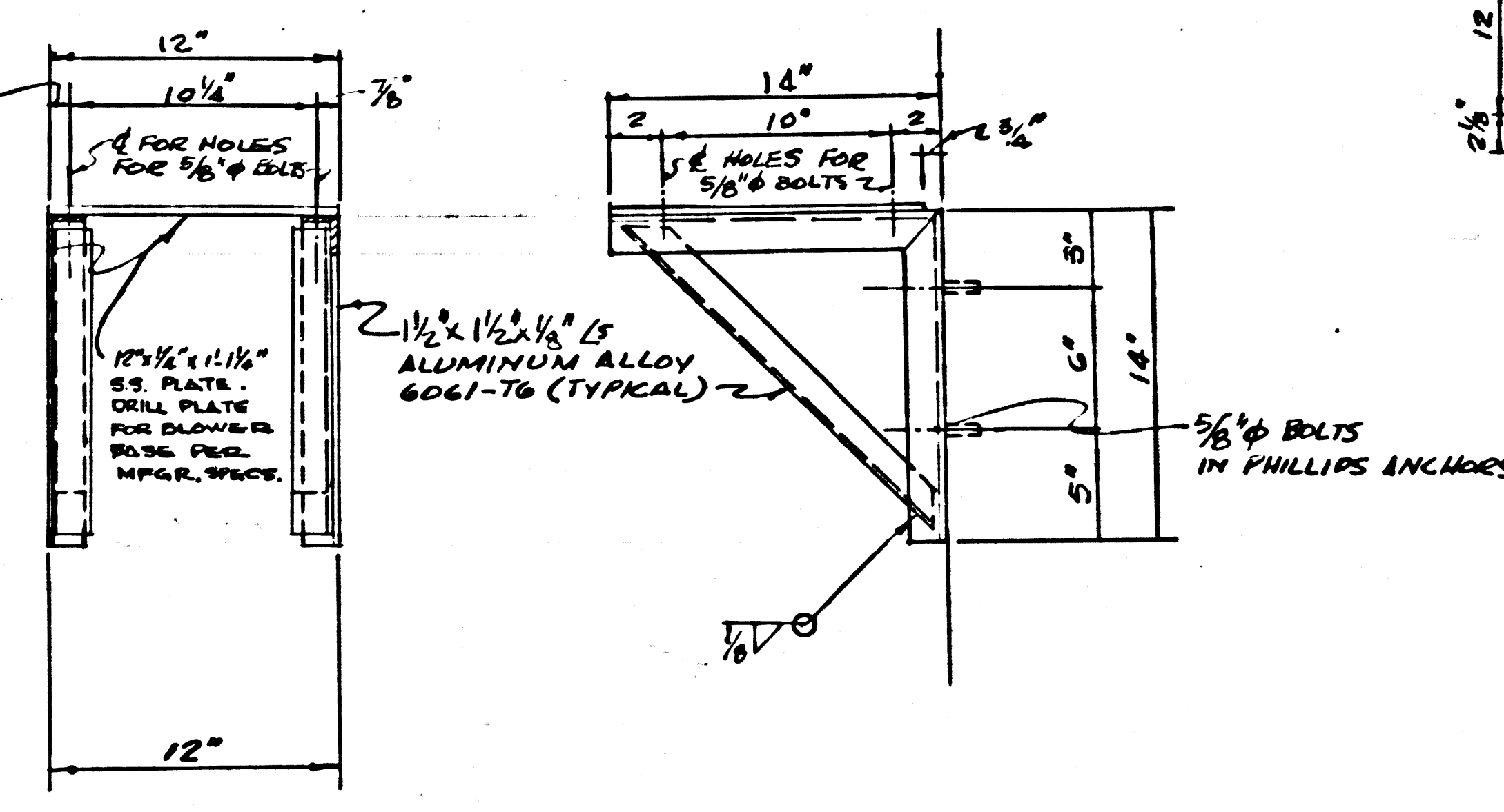
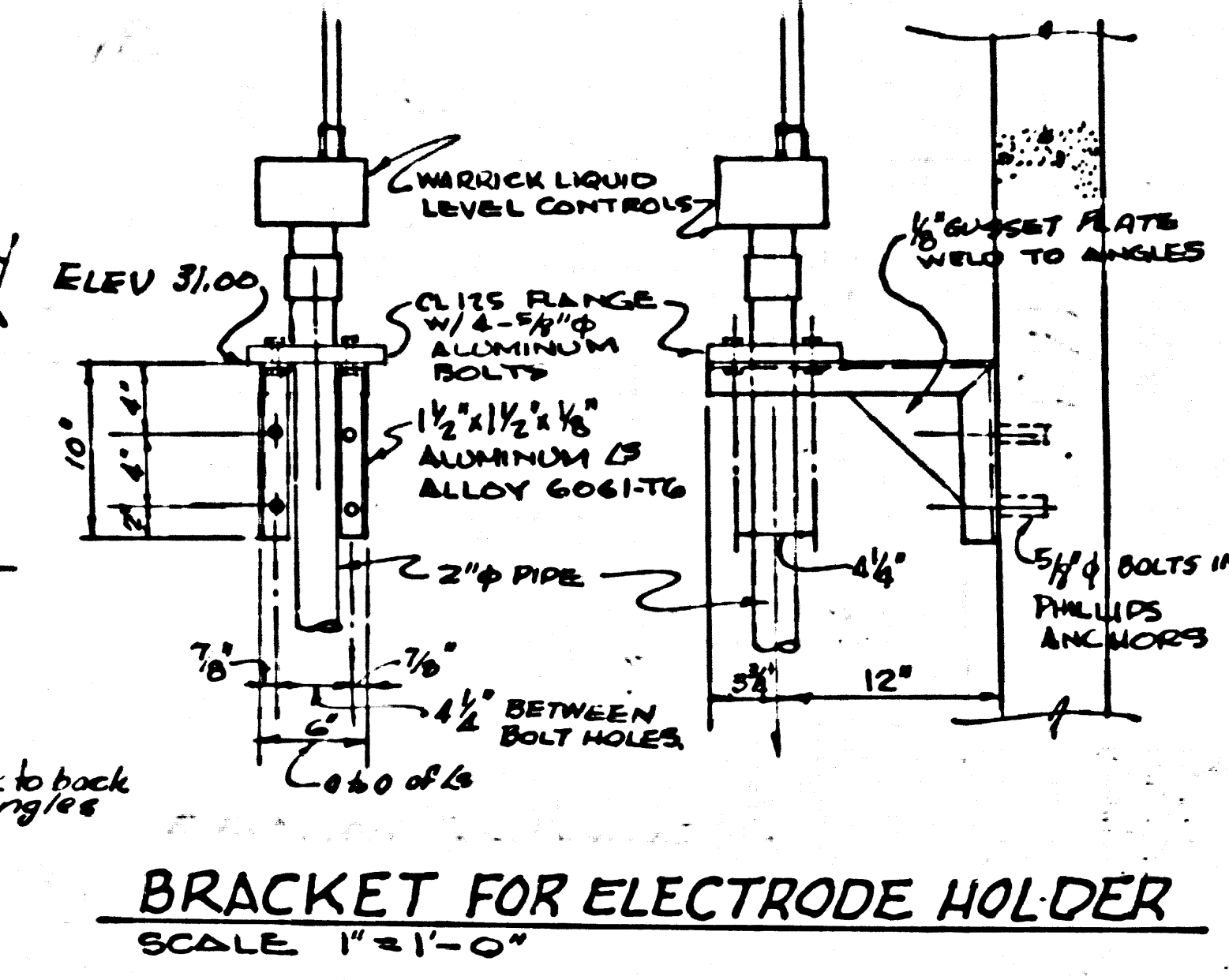
PRIVATE CONTRACT NO 6357
CONSTRUCTION PLAN FOR SEWAGE PUMP STATION TO SERVE TRACT NO. 5453
SCALE - AS NOTED DATE FEB. 1963
CITY OF DAIRY VALLEY
JOHN A. LAMBIE CITY ENGINEER
PREPARED IN THE OFFICES OF TECHNOLOGICAL ENGINEERING CORP.
J.A. Montgomery CE 9152
PAGE 3 OF 4 PAGES



NOTE: ALUMINUM BAR, PLATE, AND ANGLES SHALL BE ALUMINUM ALLOY 6061-T6. WELDING WIRE SHALL BE ALLOY 6061-T6.



ITEM	DESCRIPTION
E-1	METER BOX
E-2	70 AMP MAIN CIRCUIT BREAKER
E-3	LIQUID LEVEL CONTROL
E-4	4 CIRCUIT 3 WIRE PANEL
E-5	4" X 4" WIRING CUTTER
E-6	MOTOR STARTERS SQUARE CLASS 85906M13 1/2 HP C.
E-7	UNDERGROUND PULL BOX
E-8	TIME METER
E-9	1 KVA TRANS.
E-10	BUS W/ 2 SWITCHES & LIQUID RECEPTACLE



DATE	GENERAL	REVISION	BY	APPROV
8-17-63				

PRIVATE CONTRACT NO 6357
CONSTRUCTION PLAN FOR
SEWAGE PUMP STATION
TO SERVE
TRACT NO.5453

SCALE - AS NOTED DATE: FEB. 1963
CITY OF DAIRY VALLEY
JOHN A. LAMBIE CITY ENGINEER

PREPARED IN THE OFFICES
OF
TECHNOLOGICAL ENGINEERING CORP.

J.A. Montgomery
CE 1152