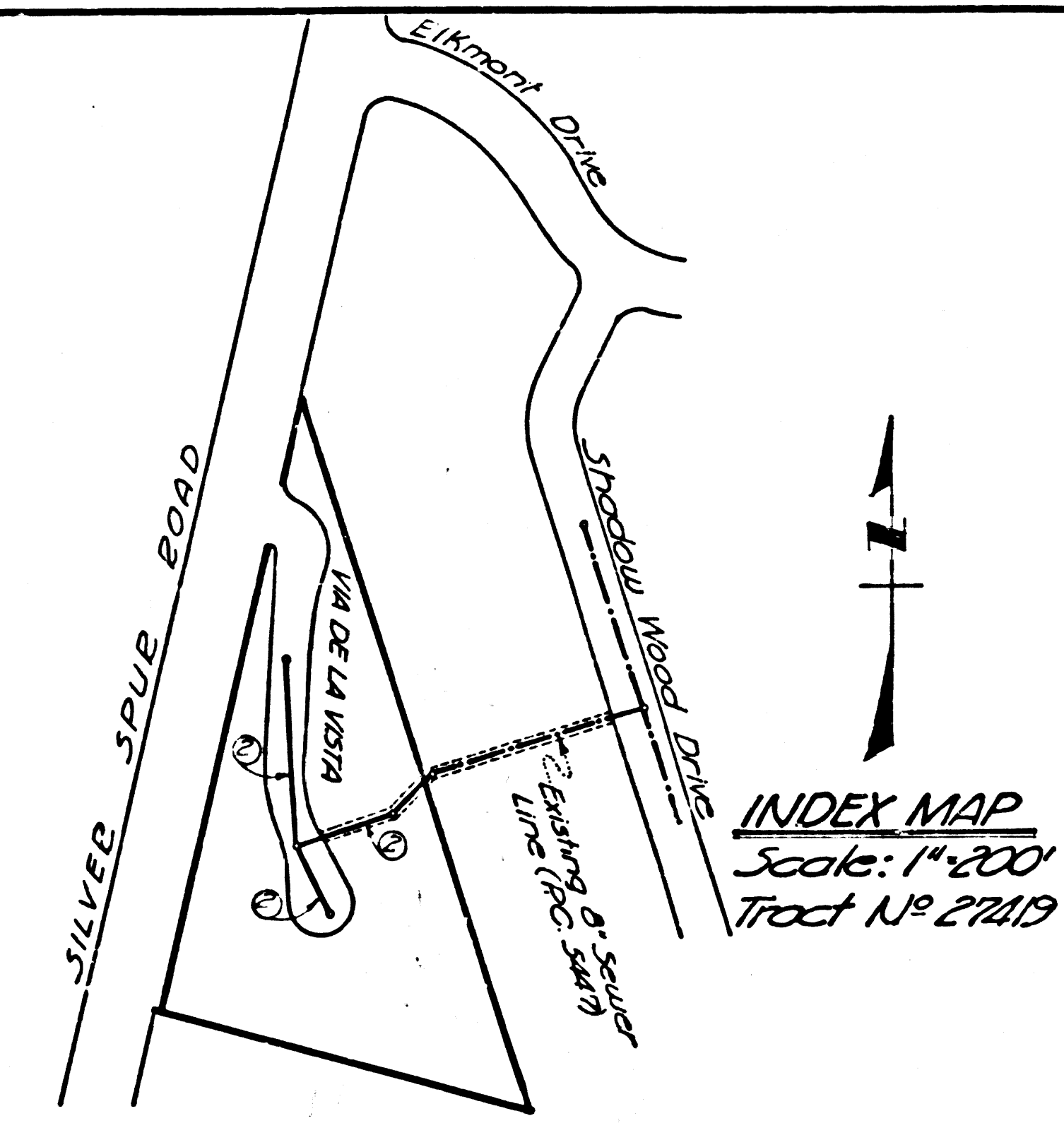


DOUBLE SCALE
LOMITA BLDG. DIST. NO. 12

PROFILE ALIGNMENT AND GRADE OF P.C. 6362
SANITARY SEWERS PAGE 1
TO BE CONSTRUCTED IN J.N. 0359.08
TRACT N° 27419

PRIVATE CONTRACT NO. 6362
W.S. 27
1 SHEET ; 2 PAGES
SCALE: VERT. 1"=6'
HORIZ. 1"=40'
October, 1962
PREPARED IN THE OFFICES OF
SOUTH BAY ENGINEERING CORPORATION

BENCH MARK:
SY 4420, Elev 751.932, Los Angeles
County Road Dept. BM tag on concrete
rim of South manhole, ±45' Westerly
of curb in island on approximate E
of Ironwood Street, ±45' Westerly of
E of Silver Spur Road. (4' below rim)



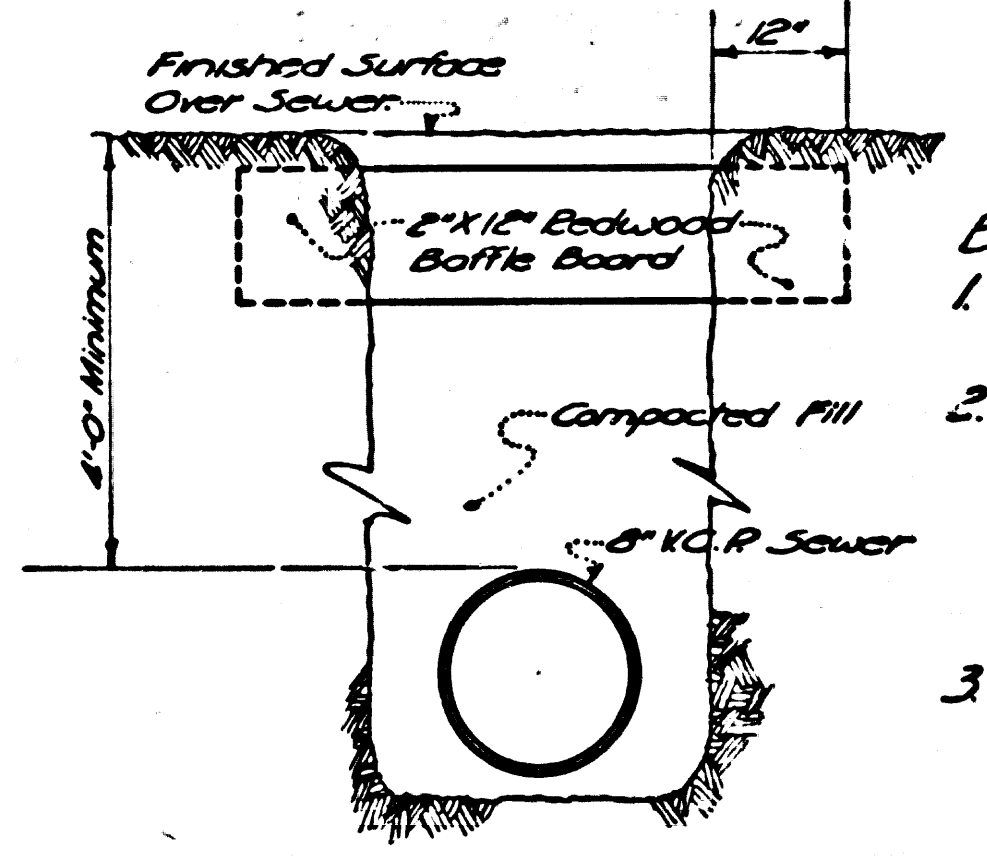
INDEX MAP
Scale: 1"=200'
Tract N° 27419

NO CHARGE FOR
CONNECTIONS
October 10, 1962

PRIVATE ENGINEERS NOTICE TO CONTRACTORS

The existence and location of any underground utility pipes or structures shown on these plans were obtained by a search of the available records. To the best of our knowledge there are no existing utility structures except as shown on this map.

The Contractor is required to take precautionary measures to protect the utility lines shown and any lines not of record or not shown on this drawing.



BAFFLE BOARD DETAIL
Not to Scale

Baffle Board Construction Notes:

- Each end of baffle board will extend 12" into undisturbed ground.
- The upper layer of backfill to be 12" min.; topsoil shall be tamped in place and planted with ice-plant and watered until growth is restored.
- Baffle boards shall be spaced so that the top of the lower board shall be level with the bottom of the next higher board.

- NOTES:
- PROVIDE STAKES ON THE PROPERTY LINE OR PROPERTY LINES PRODUCED AT RIGHT ANGLES TO THE SEWER LINE AT THE CENTER LINE OF EACH MANHOLE.
 - NO REPRESENTATIVE OF THE COUNTY ENGINEER WILL SURVEY OR LAY OUT ANY PORTION OF THE WORK.
 - THE PRIVATE ENGINEER SHALL FURNISH THE COUNTY ENGINEER WITH GRADE SHEETS AND STATIONING FOR ALL HOUSE LATERALS AND Y BRANCHES AND SHALL PROVIDE STAKES FOR THEM AT THEIR PROPER LOCATIONS WITH STATIONING PLAINLY MARKED. ANY CHANGE IN LOCATION SHALL BE REQUESTED IN WRITING BY THE PRIVATE ENGINEER. HOUSE LATERALS SHALL BE CONSTRUCTED IN A STEEPER ALIGNMENT AT THE PROPER DEPTH FROM THE MAIN LINE SEWER. THE MINIMUM DEPTH AT ANY POINT SHALL BE AS SHOWN ON THE GRADE SHEET FOR EACH HOUSE LATERAL 4' ON THE GRADE SHEET.
 - NO REVISIONS SHALL BE MADE IN THESE PLANS WITHOUT THE APPROVAL OF THE COUNTY ENGINEER.
 - USE STANDARD MANHOLE FRAMES AND COVERS, S-117
 - USE EXTRA STRENGTH PIPE 15.12.1. All pipe is standard depth.
 - USE MECHANICAL COMPRESSION JOINTS FOR ALL V.C.P. JOINTS PER SPEC'S, SECS. 34 & 40, 1-19
 - RESURFACE ALL TRENCH WITHIN PAVED AREA TO MEET L.A. COUNTY ROAD DEPT. OR CALIF. STATE HIGHWAY REQUIREMENTS IN ACCORDANCE WITH PERMITS.
 - ENCASE FOUR FEET OF SEWER AT POINTS OF INTERFERENCE WITHIN 3' OF POWER POLES PER S-172, Case III.
 - HOUSE LATERALS TO BE CONSTRUCTED WITH INVERTS AT PROPERTY LINE 6 FEET BELOW CURB GRADE
 - MANHOLES SHALL BE BRICK SEWER STRUCTURES, S-104. Precast concrete manholes per S-104, 1-19, 1-20, 1-21, 1-22, 1-23, 1-24, 1-25, 1-26, 1-27, 1-28, 1-29, 1-30, 1-31, 1-32, 1-33, 1-34, 1-35, 1-36, 1-37, 1-38, 1-39, 1-40, 1-41, 1-42, 1-43, 1-44, 1-45, 1-46, 1-47, 1-48, 1-49, 1-50, 1-51, 1-52, 1-53, 1-54, 1-55, 1-56, 1-57, 1-58, 1-59, 1-60, 1-61, 1-62, 1-63, 1-64, 1-65, 1-66, 1-67, 1-68, 1-69, 1-70, 1-71, 1-72, 1-73, 1-74, 1-75, 1-76, 1-77, 1-78, 1-79, 1-80, 1-81, 1-82, 1-83, 1-84, 1-85, 1-86, 1-87, 1-88, 1-89, 1-90, 1-91, 1-92, 1-93, 1-94, 1-95, 1-96, 1-97, 1-98, 1-99, 1-100.
 - MANHOLE TOPS IN UNIMPROVED RIGHTS-OF-WAY TO BE SIX INCHES ABOVE FINISHED GRADE.
 - THE CONTRACTOR SHALL NOTIFY THE CONSTRUCTION DIVISION BY TELEPHONE, MADISON 9-077, EX-6857, AT LEAST TWENTY-FOUR HOURS BEFORE STARTING ANY WORK UNDER THIS CONTRACT.
 - Specifications dated May 25, 1962 apply in the construction of this project.
 - If during the course of construction it is determined that there is less than four feet of cover over the top of a mainline or house lateral V.C.P. sewer which is not indicated on the plans, the pipe shall be encased per S-172, Case III unless otherwise approved by the County Engineer.
 - All state and local trench safety orders will be strictly enforced.

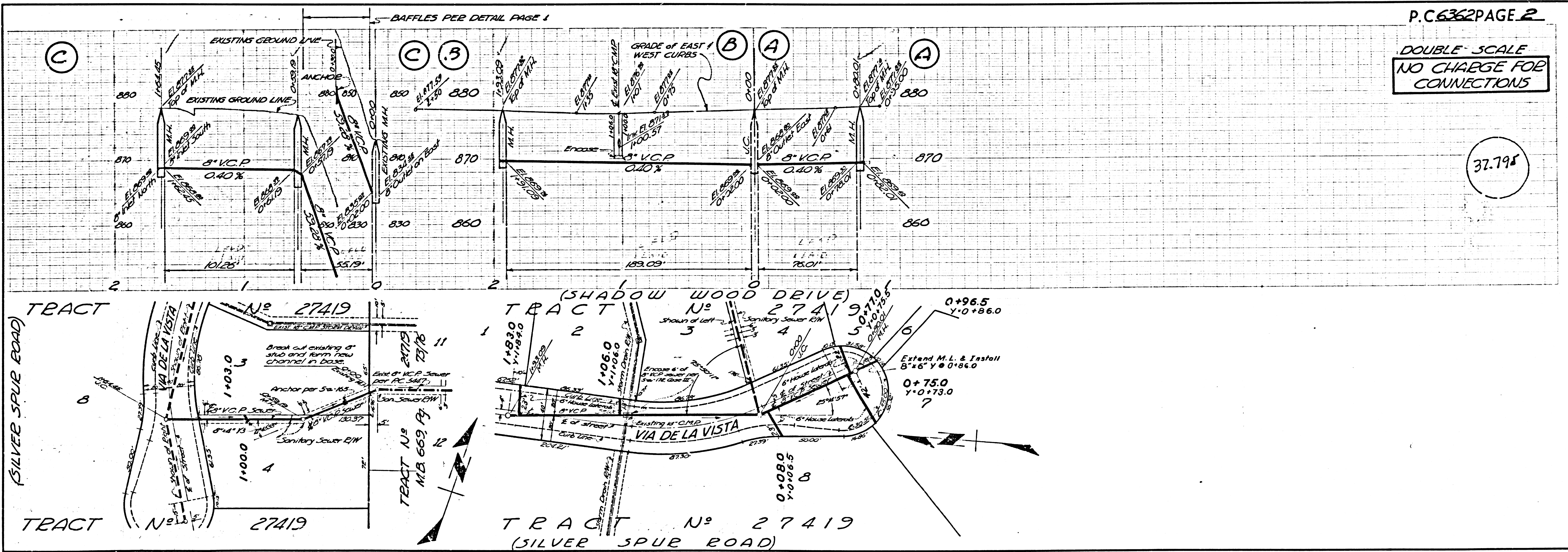
NO CONNECTIONS FOR THE DISPOSAL OF INDUSTRIAL WASTES SHALL BE MADE TO SEWERS SHOWN ON THESE DRAWINGS WITHOUT WRITTEN PERMISSION FROM THE CHIEF ENGINEER AND GENERAL MANAGER OF THE COUNTY SANITATION DISTRICTS.

NOTE:
GRADES TO WHICH THIS IMPROVEMENT IS TO BE CONSTRUCTED ARE SHOWN ON PLANS AND PROFILES. GRADE POINTS FOR TOP OF CURBS, CENTER LINE OF STREETS OR CENTER LINE OF ALLEYS ARE SHOWN BY CIRCLES ON PROFILES. AT ALL POINTS BETWEEN DESIGNATED POINTS THE GRADE SHALL BE ESTABLISHED SO AS TO CONFORM TO A STRAIGHT LINE DRAWN BETWEEN SAID DESIGNATED POINTS.
ELEVATIONS ARE IN FEET ABOVE U.S.C. & G.S. SEA LEVEL DATUM OF 1929.
THIS DRAWING AND THE DATA HEREON ARE HEREBY MADE A PART OF THE SPECIFICATIONS.
WORK SHALL BE CONSTRUCTED ACCORDING TO SPECIFICATIONS ON FILE IN THE OFFICE OF THE COUNTY ENGINEER AND SHALL BE PROSECUTED ONLY IN THE PRESENCE OF THE COUNTY ENGINEER.
BEFORE WORK CAN BE STARTED, THE CONTRACTOR MUST OBTAIN A PERMIT TO EXCAVATE IN COUNTY STREETS FROM THE L.A. COUNTY ROAD DEPT., DISTRICT OFFICE NO. 10-23-62, AND PAY A FEE WITH THE COUNTY ENGINEER, ROOM 350 COUNTY ENGINEERS BLDG., 125 N. 2ND ST., SUFFICIENT TO COVER THE COST OF CONSTRUCTION INSPECTION AND RECORD PLANS.
APPROVAL OF THIS PLAN BY THE COUNTY OF LOS ANGELES DOES NOT CONSTITUTE A REPRESENTATION AS TO THE ACCURACY OF THE LOCATION OF OR THE EXISTENCE OR NON-EXISTENCE OF ANY UNDERGROUND UTILITY PIPE OR STRUCTURE WITHIN THE LIMITS OF THIS PROJECT. THIS NOTE APPLIES TO ALL PAGES.
IF WORK IS TO BE DONE IN A STATE HIGHWAY, A PERMIT MUST BE OBTAINED FROM THE STATE OF CALIFORNIA, DIVISION OF HIGHWAYS, 120 SOUTH BRING STREET.

COUNTY OF LOS ANGELES, CALIFORNIA
Approved: John A. Lambie, County Engineer
Approved: W.D. Parkhurst, Chief Eng.
CD, SAN. DIST. NO. 5
BY: Paul S. Keim, ASST. SANITATION ENGINEER
BY: M. J. [Signature], OFFICE ENGINEER
CHECKED BY: [Signature] 10-23-62
OFFICE OF COUNTY ENGINEER, REG. C. E. NO. 2404

Submitted: Jack C. [Signature]
Polos Verdes - Centinella Valley Regional Engineer

P.C. 6362 PAGE 2
DOUBLE SCALE
NO CHARGE FOR
CONNECTIONS



37.795