

DOUBLE SCALE  
SANDIMAS BLDG. DIST. NO. 10

PROFILE ALIGNMENT AND GRADE OF P.C. 6363  
SANITARY SEWERS PAGE 1  
TO BE CONSTRUCTED IN

TRACT N<sup>o</sup> 25991

PRIVATE CONTRACT NO. 6363

W.S. 39

6 SHEETS; 12 PAGES

SCALE: VERT. 1" = 4'  
HORIZ. 1" = 40'

FEB, 1963  
PREPARED IN THE OFFICES OF  
DUTCH HOLZHAUER AND ASSOCIATES  
7 W. Hellman Avenue, Alhambra, California CU 3-9251

By: *D. L. Johnson*  
REG. C. E. NO. 10219

FOR LEGEND SEE PLAN NO. S-A-64

NOTE:  
GRADES TO WHICH THIS IMPROVEMENT IS TO BE CONSTRUCTED ARE SHOWN ON PLANS AND PROFILES. GRADE POINTS FOR TOP OF CURBS, CENTER LINE OF STREETS, OR CENTER LINE OF ALLEYS ARE SHOWN BY CIRCLES ON PROFILES. AT ALL POINTS BETWEEN DESIGNATED POINTS THE GRADE SHALL BE ESTABLISHED SO AS TO CONFORM TO A STRAIGHT LINE DRAWN BETWEEN SAID DESIGNATED POINTS.  
ELEVATIONS ARE IN FEET ABOVE U.S.C. & G.S. SEA LEVEL DATUM OF 1929.  
THIS DRAWING AND THE DATA HEREON ARE HEREBY MADE A PART OF THE SPECIFICATIONS.  
WORK SHALL BE CONSTRUCTED ACCORDING TO SPECIFICATIONS ON FILE IN THE OFFICE OF THE COUNTY ENGINEER AND SHALL BE PROSECUTED ONLY IN THE PRESENCE OF THE COUNTY ENGINEER.  
BEFORE WORK CAN BE STARTED, THE CONTRACTOR MUST OBTAIN A PERMIT TO EXCAVATE IN COUNTY STREETS OR ALLEYS FROM THE COUNTY ROAD DEPT., DISTRICT OFFICE NO. 10, AND PAY A FEE TO THE COUNTY ENGINEER ROOM 280 1/2 A COUNTY ENGINEER BLDG., 106 W. 2ND ST. SUFFICIENT TO COVER THE COST OF CONSTRUCTION INSPECTION AND RECORD PLANS.  
APPROVAL OF THIS PLAN BY THE COUNTY OF LOS ANGELES DOES NOT CONSTITUTE A REPRESENTATION AS TO THE ACCURACY OF THE LOCATION OR THE EXISTENCE OF NON-EXISTENCE OF ANY UNDERGROUND UTILITY PIPE, OR STRUCTURE WITHIN THE LIMITS OF THIS PROJECT. THIS NOTE APPLIES TO ALL PAGES.  
IF WORK IS TO BE DONE IN A STATE HIGHWAY, A PERMIT MUST BE OBTAINED FROM THE STATE OF CALIFORNIA, DIVISION OF HIGHWAYS, 120 SOUTH SPRING STREET.

COUNTY OF LOS ANGELES, CALIFORNIA

APPROVED, JOHN A. AMBIE, COUNTY ENGINEER APPROVED, J. D. PARKHURST, CHIEF ENGINEER

By: *J. S. K. K.* ASST. SANITATION ENGINEER By: *D. L. Johnson* OFFICE ENGINEER

CHECKED BY: *S. K. Wade* 4-15-63

OFFICE OF COUNTY ENGINEER, REG. C. E. NO. 3406

SUBMITTED: *B. F. Kurling* P.E. N<sup>o</sup> 11636 4-18-63

San Diego Regional Office

JN 0359.09

BENCH MARK:  
SG 1809 Road Dept. B.M. Tag Near So. End Concrete  
Headwall N<sup>o</sup> 140+93+20' W. & Brea Canyon Road  
0.65 Miles N. of Brea Canyon Cutoff Road.  
QUAD OTTERBEIN 1955 ELEV. 727.345

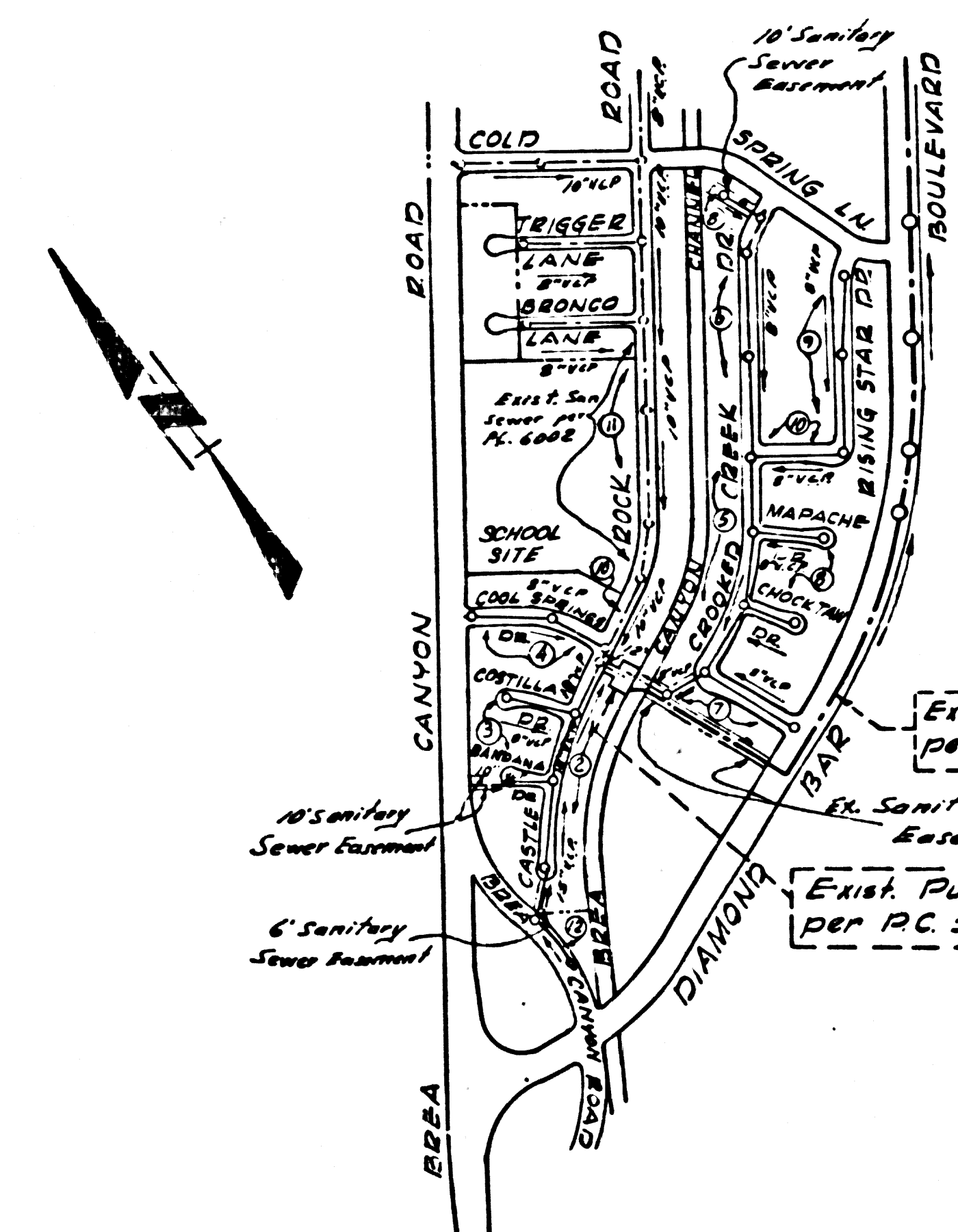
UNDERGROUND STRUCTURES  
All underground utilities or structures reported by the owner or others and those shown on the records examined are indicated with their approximate location and extent.  
The owner by accepting these plans or proceeding with improvements pursuant thereto agrees to assume liability and to hold undersigned harmless for any damages resulting from the existence of underground utilities or structures not reported to the undersigned; not indicated on the public records examined; located at variance with that reported or shown on records examined.  
The Contractor is required to take due precautionary measures to protect the utilities or structures shown and any other utilities or structures found at the site. It shall be the Contractor's responsibility to notify the owners of the utilities or structures concerned before starting work.

*D. L. Johnson*  
R.C.E. N<sup>o</sup> 10219

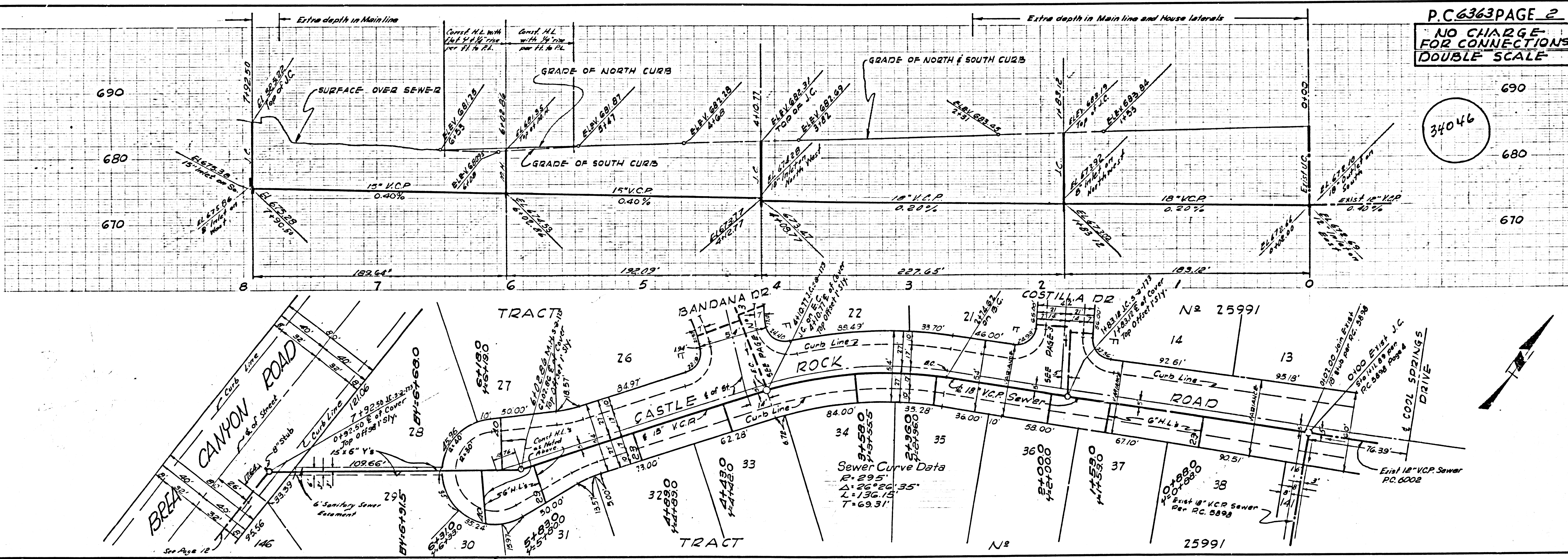
NO CHARGE  
FOR CONNECTIONS

*P. R. Smith*

NO CONNECTIONS FOR THE DISPOSAL OF INDUSTRIAL WASTES SHALL BE MADE TO SEWERS SHOWN ON THESE DRAWINGS WITHOUT WRITTEN PERMISSION FROM THE CHIEF ENGINEER AND GENERAL MANAGER OF THE COUNTY SANITATION DISTRICTS.



INDEX MAP  
TRACT N<sup>o</sup> 25991  
P.C. 6363  
Scale 1" = 400'

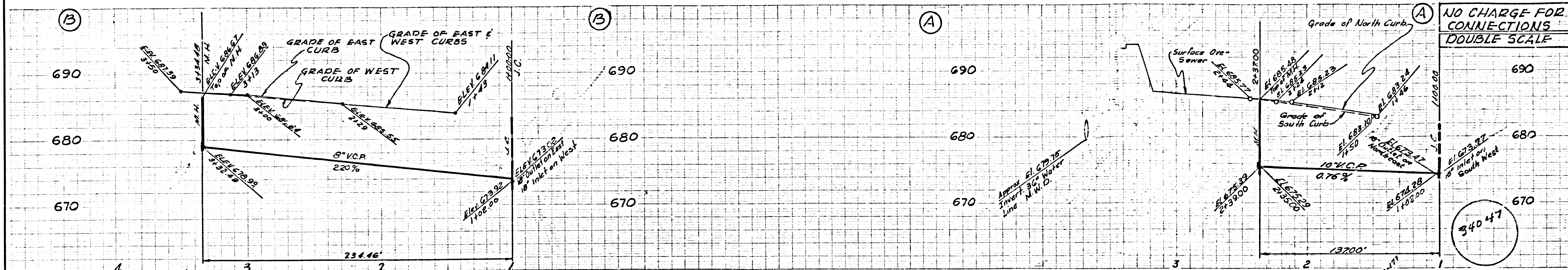


P.C. 6363 PAGE 2  
NO CHARGE  
FOR CONNECTIONS  
DOUBLE SCALE

34046

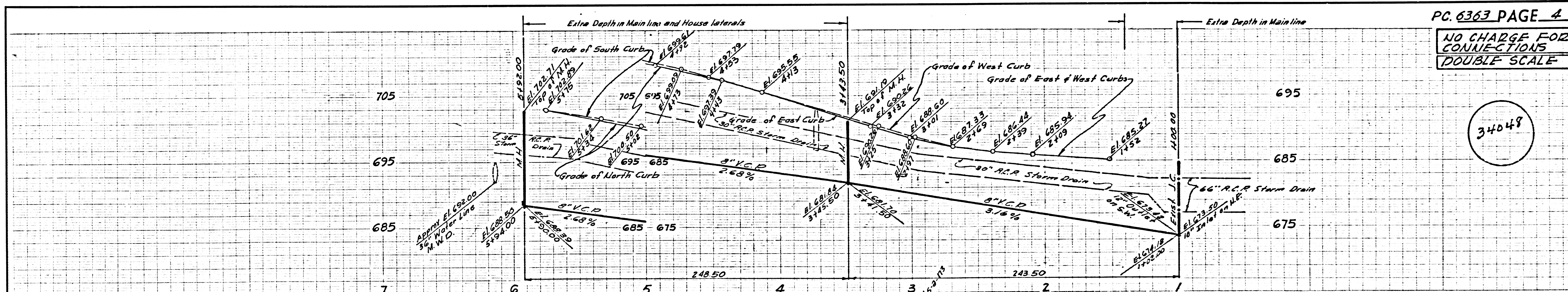
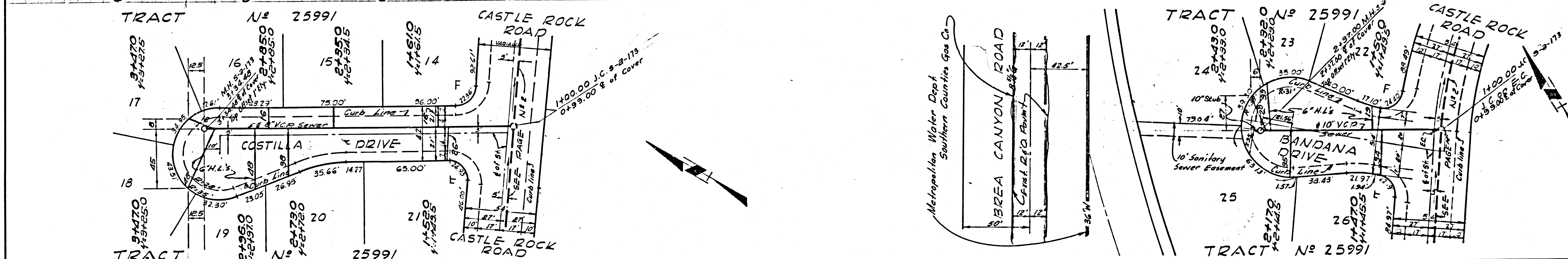
Sewer Curve Data  
R = 295'  
Δ = 26° 26' 35"  
L = 136.15'  
T = 69.31'





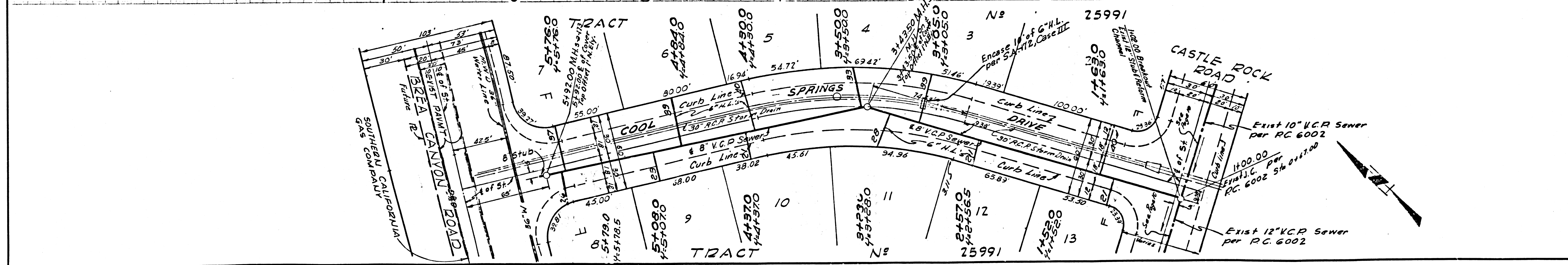
NO CHARGE FOR CONNECTIONS  
DOUBLE SCALE

34047



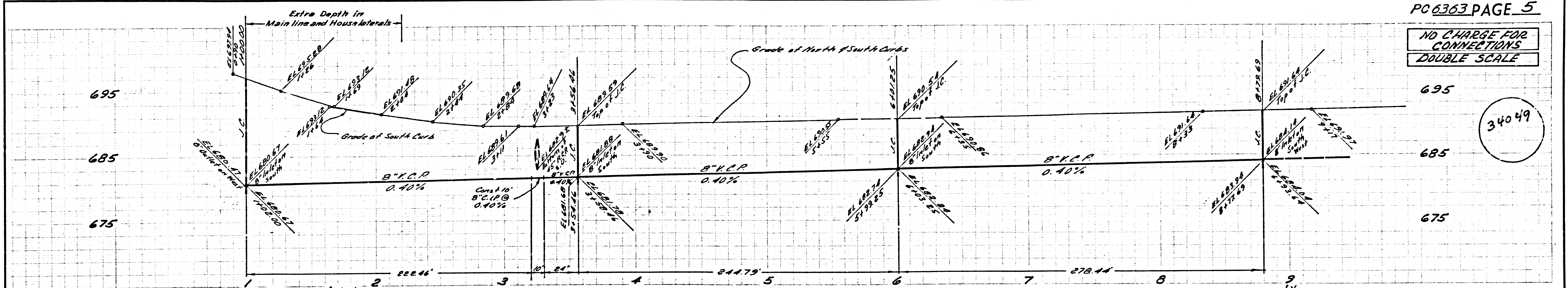
NO CHARGE FOR CONNECTIONS  
DOUBLE SCALE

34048

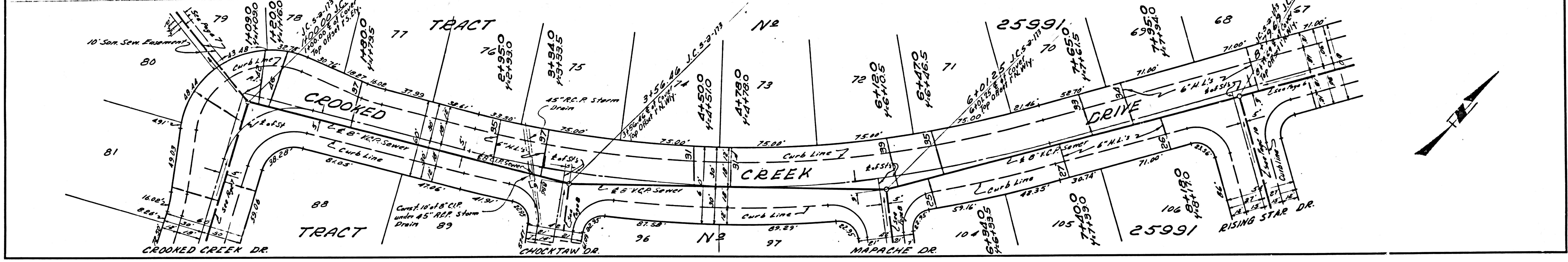




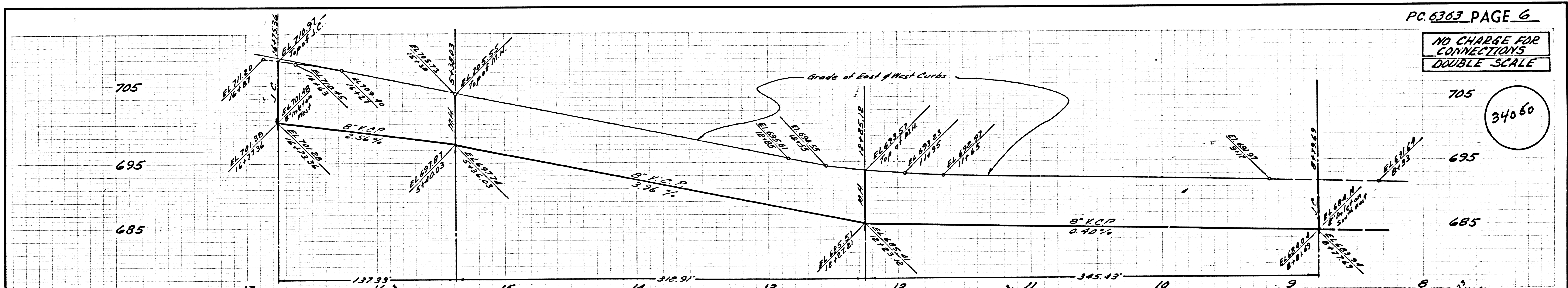
NO CHARGE FOR CONNECTIONS  
DOUBLE SCALE



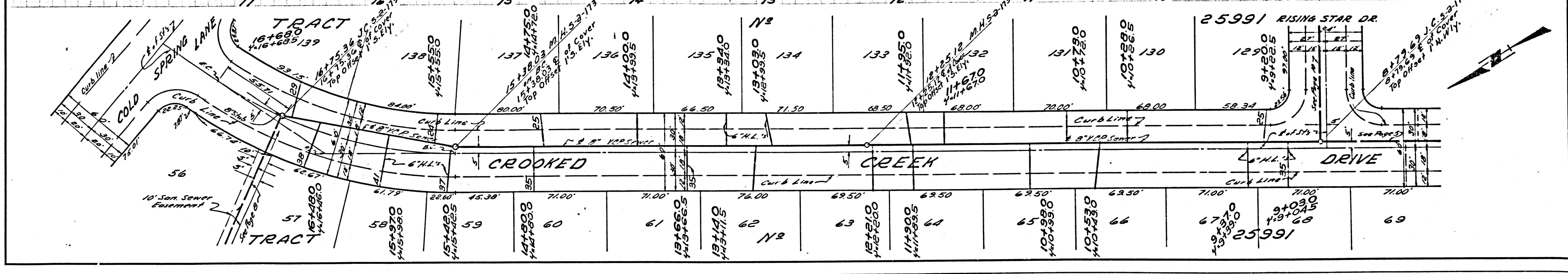
34049



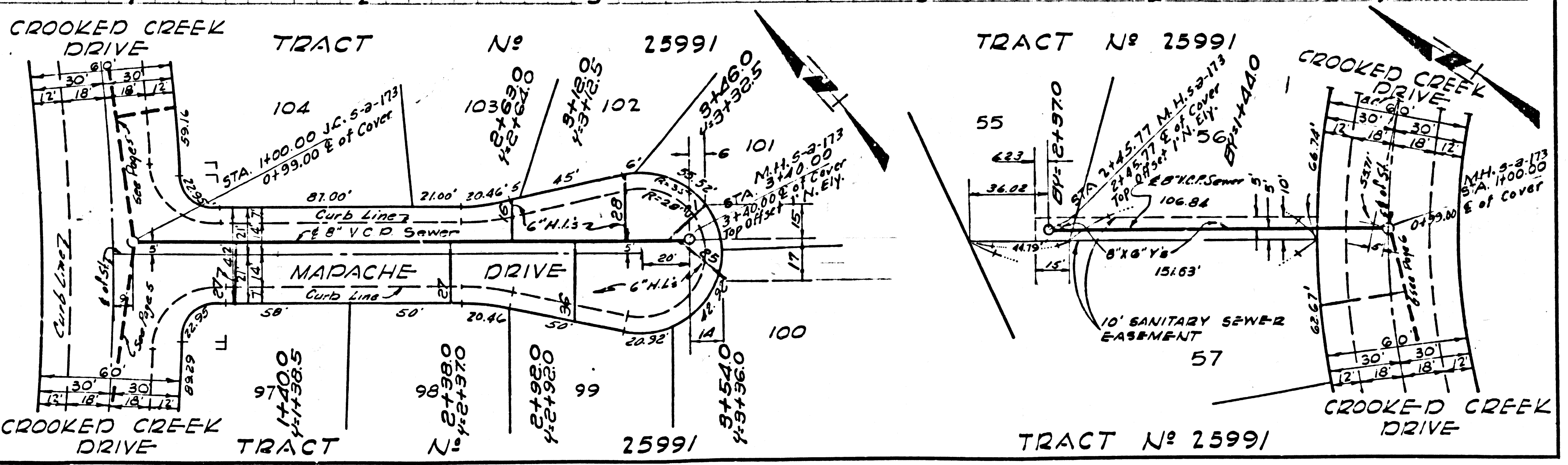
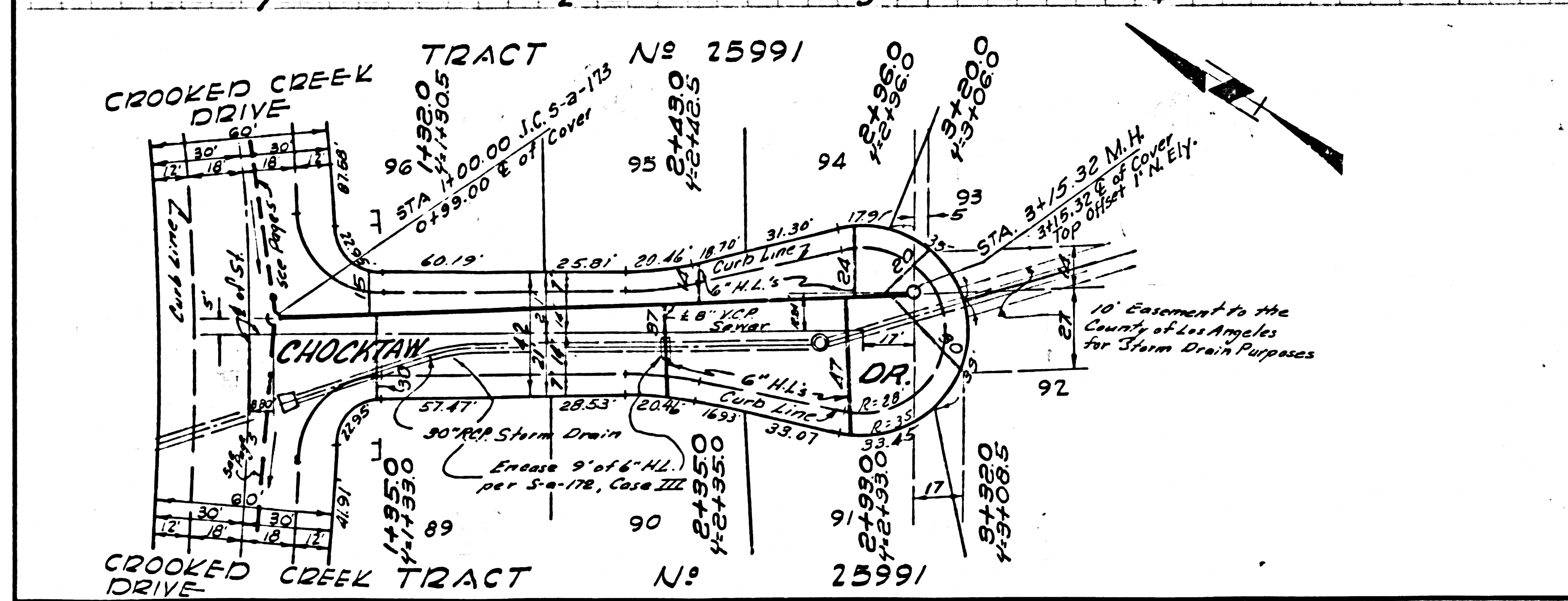
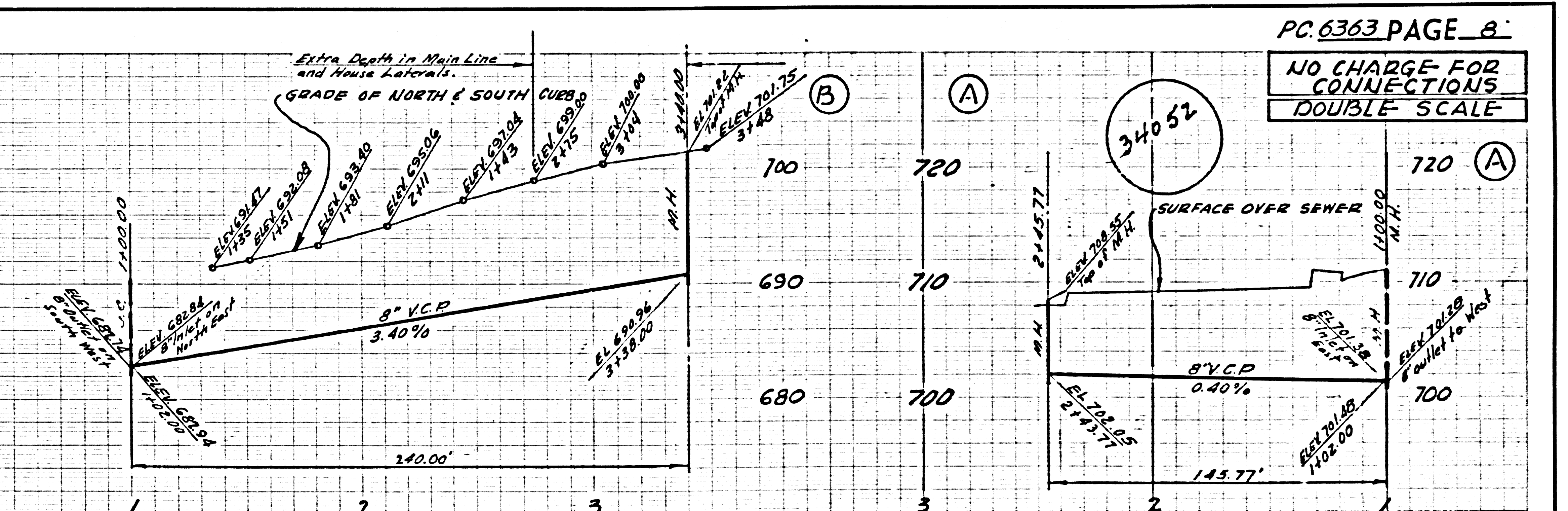
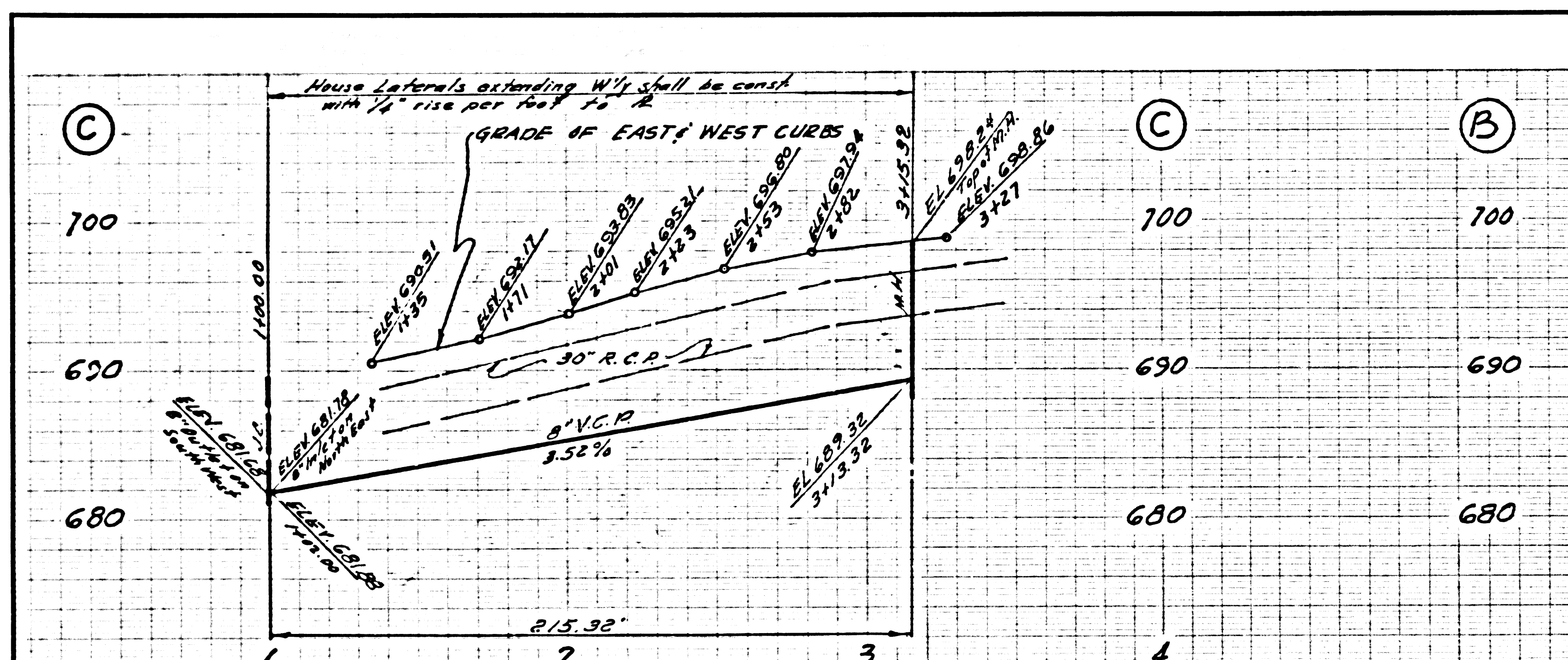
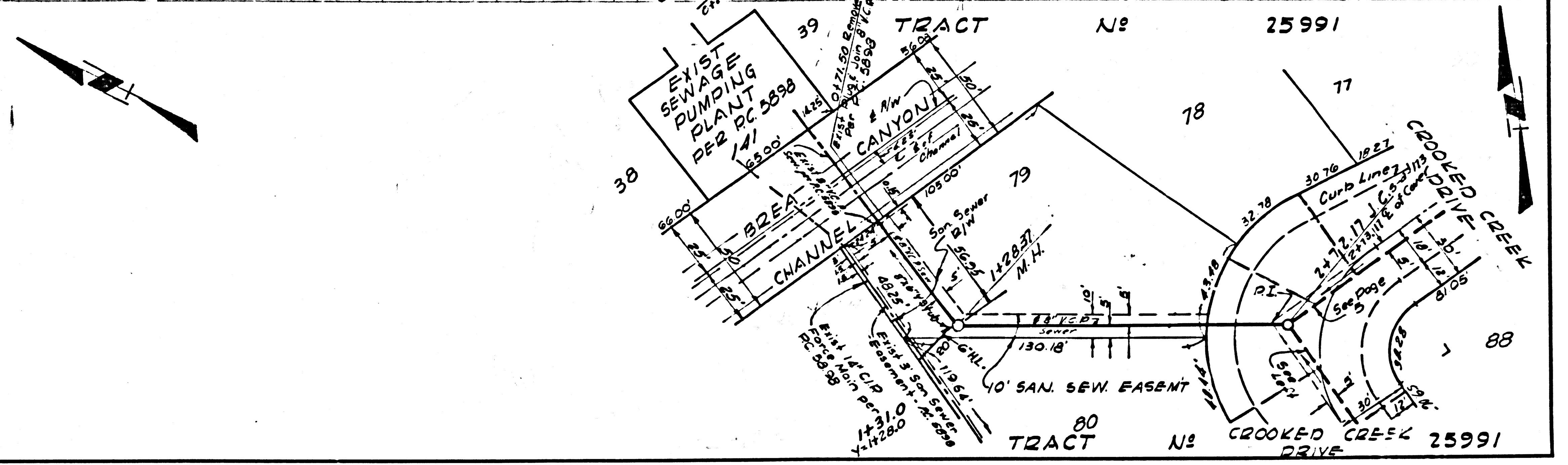
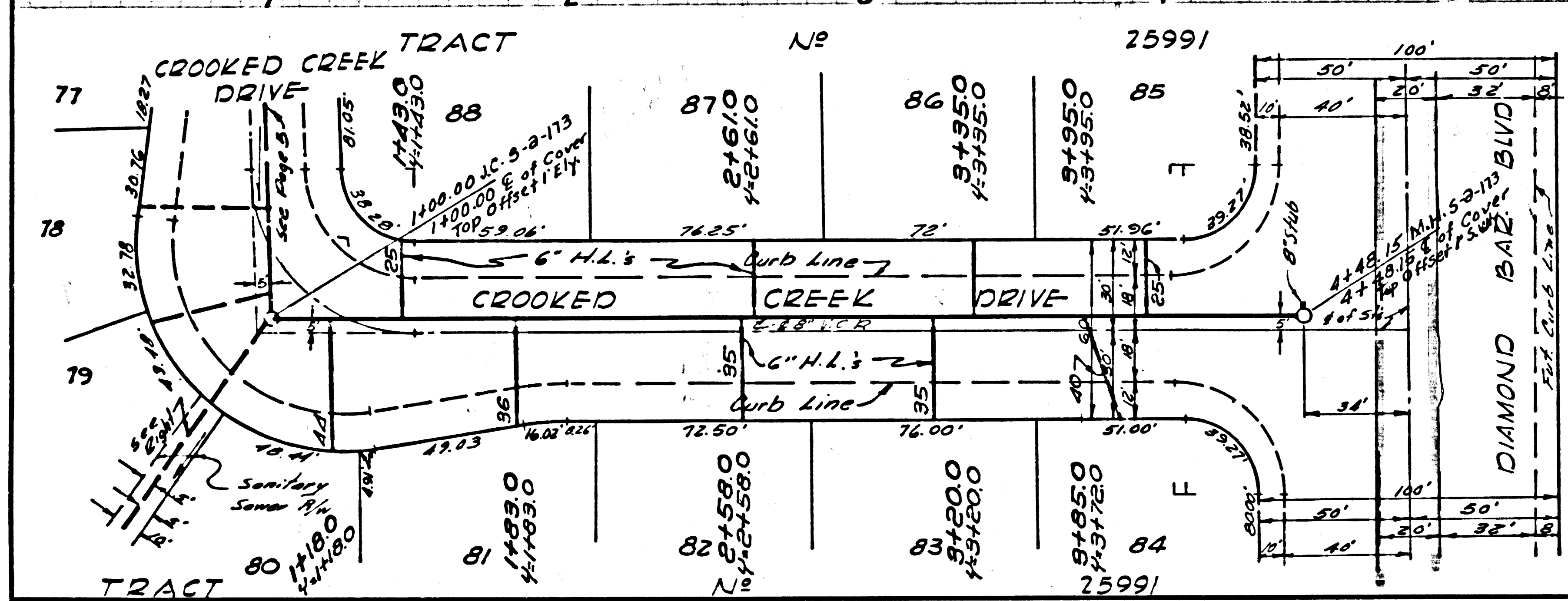
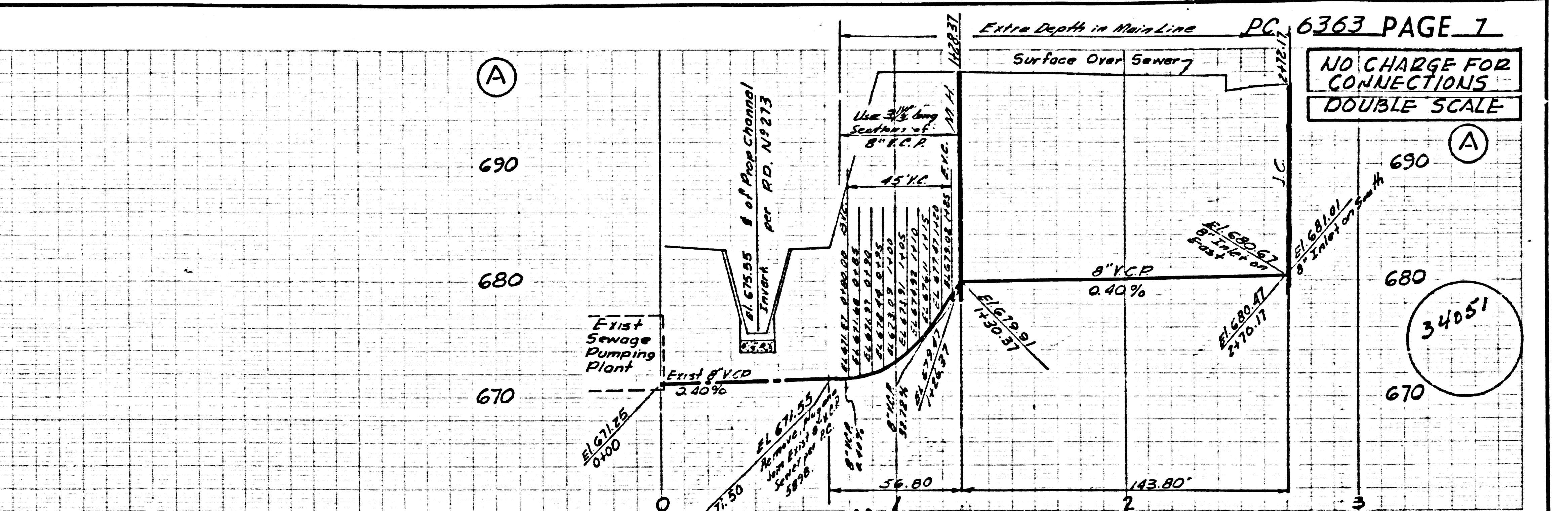
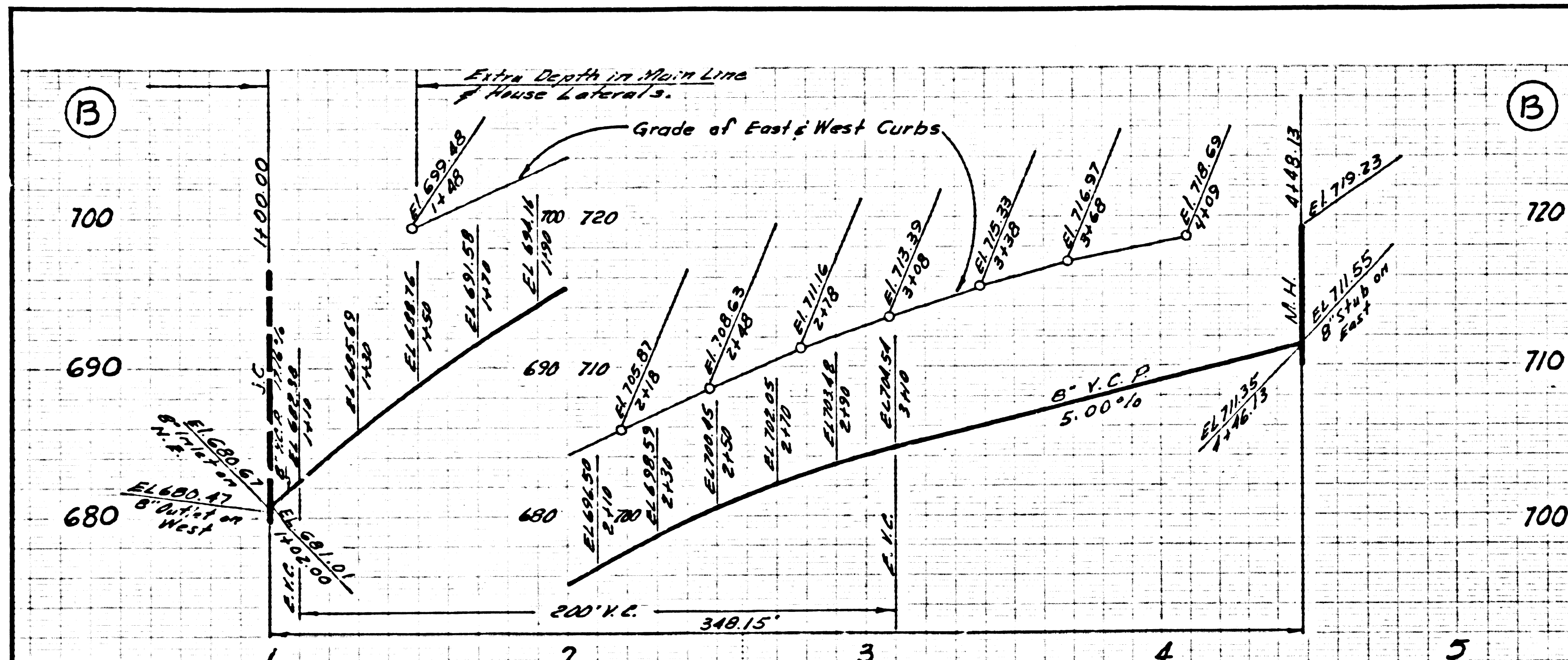
NO CHARGE FOR CONNECTIONS  
DOUBLE SCALE



34060







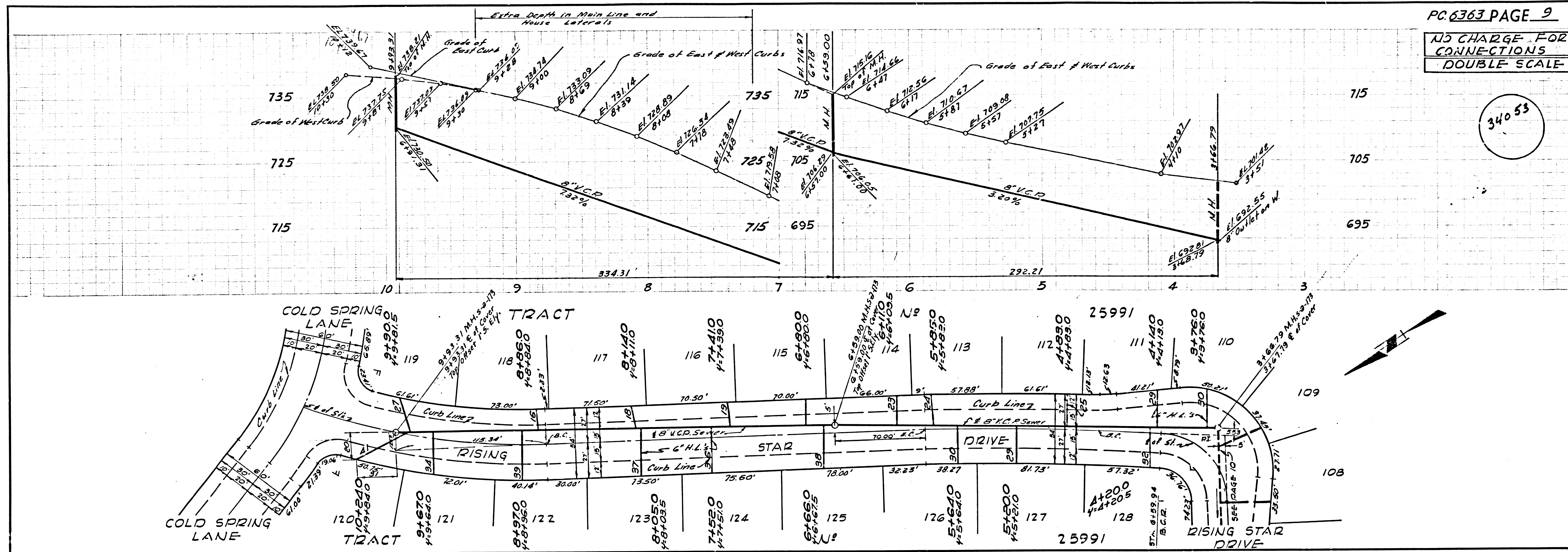
PC. 6363 PAGE 1  
NO CHARGE FOR CONNECTIONS  
DOUBLE SCALE

PC. 6363 PAGE 2  
NO CHARGE FOR CONNECTIONS  
DOUBLE SCALE



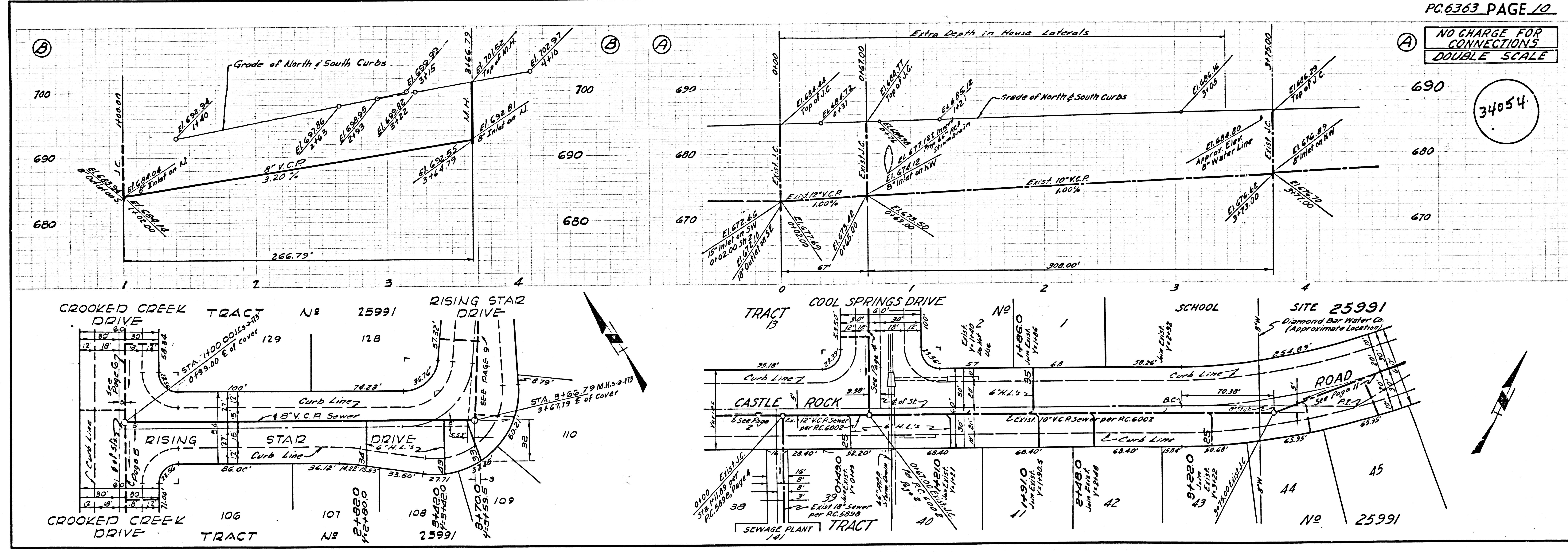
NO CHARGE FOR CONNECTIONS  
DOUBLE SCALE

34053



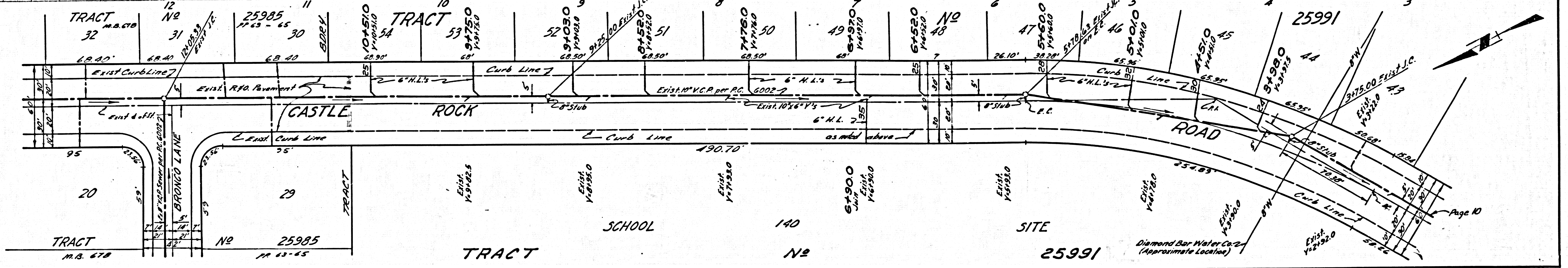
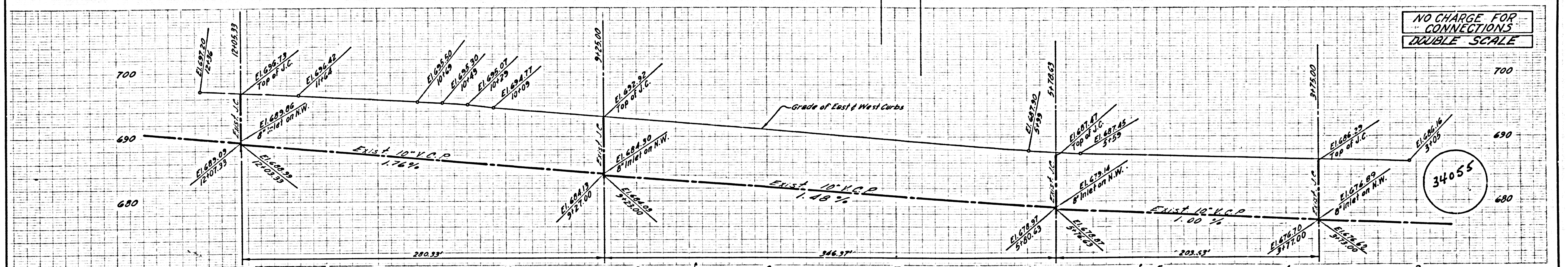
NO CHARGE FOR CONNECTIONS  
DOUBLE SCALE

34054

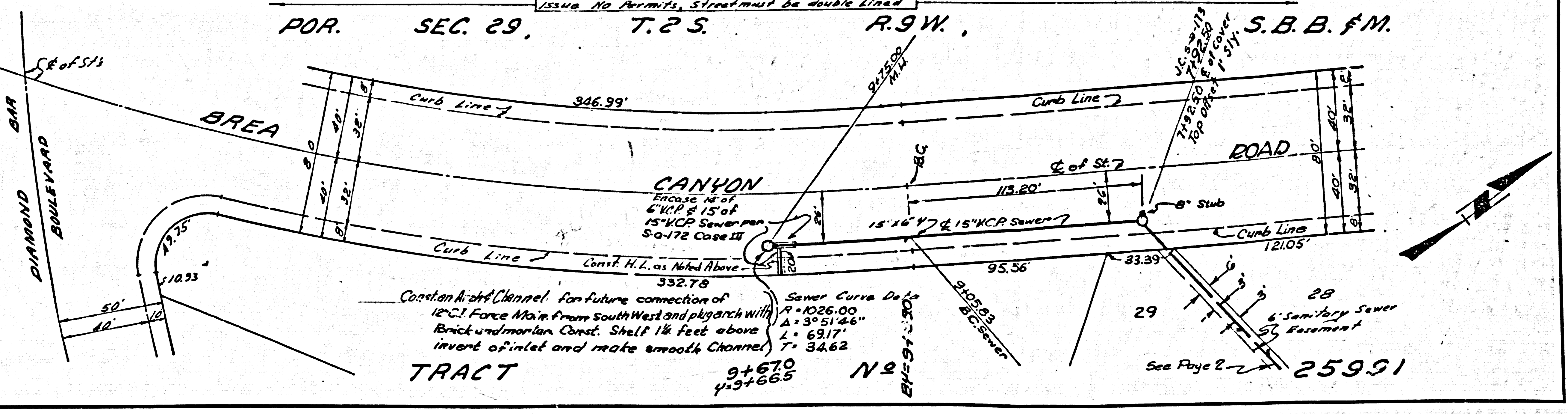
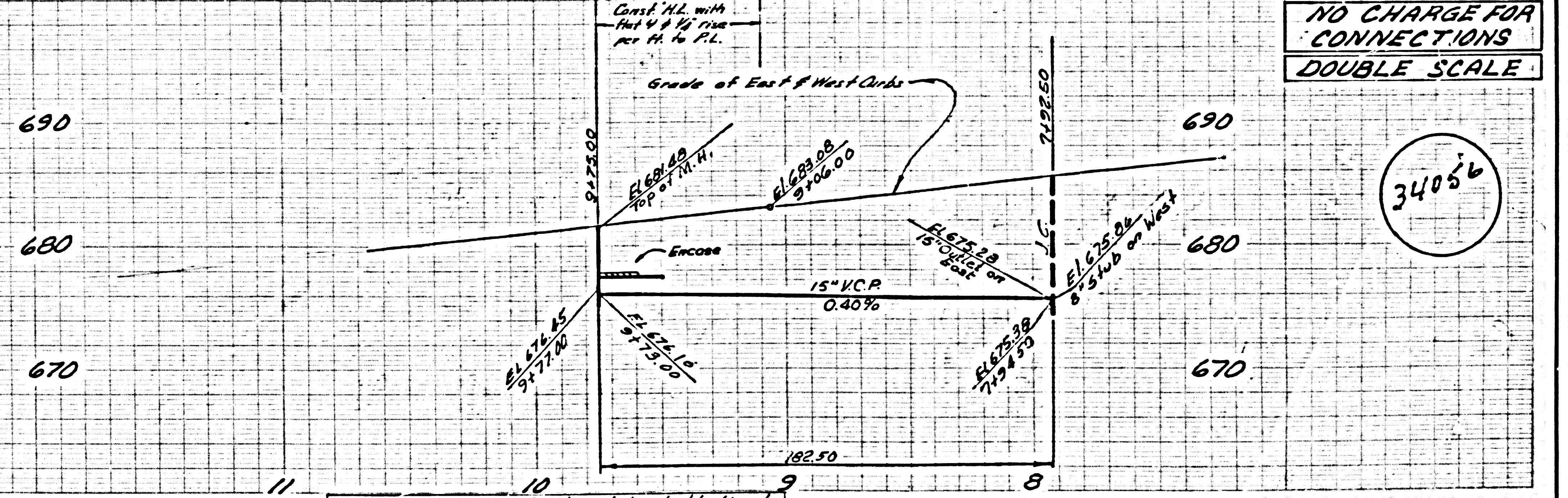




NO CHARGE FOR CONNECTIONS  
DOUBLE SCALE



NO CHARGE FOR CONNECTIONS  
DOUBLE SCALE



PC 6363