

BENCH MARK: GARDENA QUAD.
 S1 39° 5' Spk & L. in Port. ± 19' W. E. of WILMINGTON
 AVE. ± 2175' S. E. of VICTORIA ST. ± 75' S. of T.P.
 #342036-H. ELEV. 1889.49 1955

DOUBLE SCALE
 LENNOX BLDG. DIST. NO. 7

PROFILE ALIGNMENT AND GRADE OF P.C. 6375
 SANITARY SEWERS PAGE 1
 TO BE CONSTRUCTED IN J.N. 0359.16

TRACT NO. 27522

PRIVATE CONTRACT NO. 6375

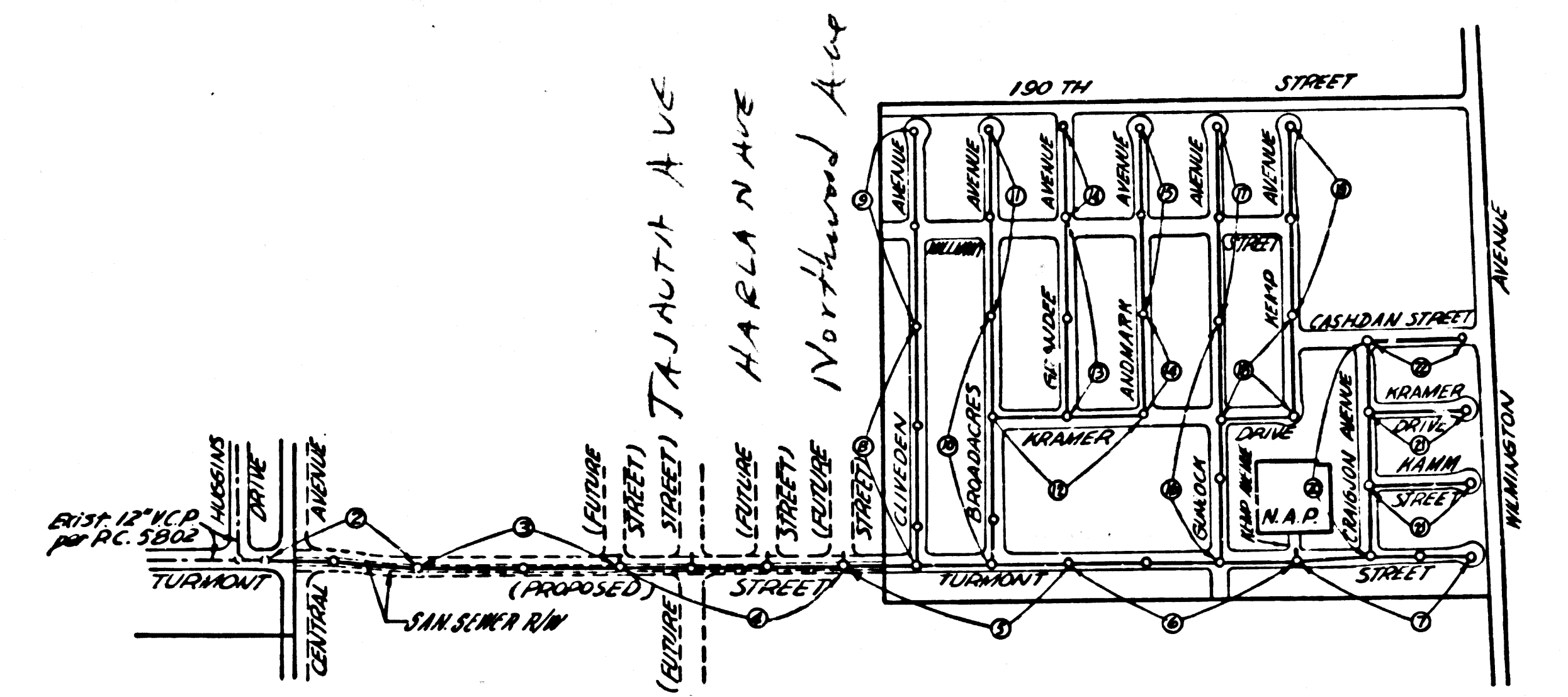
W.S. 26
 11 SHEETS, 22 PAGES

SCALE: VERT. 1" = 4' HORIZ. 1" = 40' SEPT., 1962 33851

PREPARED IN THE OFFICES OF
 ENGINEERING SERVICE CORPORATION

By: *R. E. Kuhn*
 REG. C. E. NO. 3682

FOR LEGEND SEE PLAN NO. S-A-64



INDEX MAP
 TRACT NO. 27522
 SCALE: 1" = 600'
 P.C. 6375

COLLECT CHARGES
 AS INDICATED
L. Curtis 1-15-63

- NOTES
- PROVIDE STAKES ON THE PROPERTY LINE OR PROPERTY LINES PRODUCED AT RIGHT ANGLES TO THE SEWER LINE AT THE CENTER LINE OF EACH MANHOLE.
 - NO REPRESENTATIVE OF THE COUNTY ENGINEER WILL SURVEY OR LAYOUT ANY PORTION OF THE WORK.
 - THE PRIVATE ENGINEER SHALL FURNISH THE COUNTY ENGINEER WITH GRADE SHEETS AND STATIONING FOR ALL HOUSE LATERALS AND Y BRANCHES AND SHALL PROVIDE STAKES FOR THEM AT THEIR PROPER LOCATIONS WITH STATIONING PLAINLY MARKED AND CHANGE SHALL BE REQUESTED IN WRITING BY THE PRIVATE ENGINEER. ALL HOUSE LATERALS SHALL BE CONSTRUCTED IN A STRAIGHT ALIGNMENT AT RIGHT ANGLES FROM THE MAIN LINE SEWER EXCEPT AS SHOWN ON THE PLANS. NO REVISIONS SHALL BE MADE IN THESE PLANS WITHOUT THE APPROVAL OF THE COUNTY ENGINEER.
 - USE STANDARD MANHOLE FRAMES AND COVERS, S.A.117, EXCEPT AS NOTED.
 - USE EXTRA STRENGTH PIPE, ALL PIPE STANDARD DEPTH EXCEPT AS NOTED.
 - USE MECHANICAL COMPRESSION JOINTS FOR V.C.P. AND SPECIAL SECS. 85, 48 & 49 USE MECHANICAL COMPRESSION JOINTS FOR ALL V.C.P. HOUSE LATERALS PER SPEC. SEC. 32 & 49.
 - RESURFACE ALL TRENCH WITH PAVED AREA TO MEET L.A. COUNTY ROAD DEPT. OR CALIF. STATE HIGHWAY DEPT. REQUIREMENTS IN ACCORDANCE WITH PERMITS.
 - ENCASE FOUR FEET OF SEWER AT POINTS OF INTERFERENCE WITH POLES, CASE III S-9-172, IF WITHIN 3 FEET OF POLES.
 - HOUSE LATERALS TO BE CONSTRUCTED WITH INVERTS AT PROPERTY LINE. 6 FEET BELOW CURB GRADE EXCEPT AS NOTED.
 - MANHOLES SHALL BE BRICK SEWER STRUCTURES, S.A.104, PRECAST CONCRETE MANHOLES PER S-A-135 OR S-9-172 MAY BE USED AS ALTERNATE IN LOCATIONS APPROVED BY THE COUNTY ENGINEER.
 - FOR ALLOWABLE LEAKAGE TEST USE FORMULA NO. 1000 PER SPEC. SEC. 54.
 - MANHOLE TOPS IN UNIMPROVED RIGHTS-OF-WAY TO BE 6" ABOVE FINISHED GRADE.
 - THE PRIVATE ENGINEER IS TO FURNISH THE HOUSE LATERAL DEPTH AT THE PROPERTY LINE BELOW THE TOP OF CURB ELEVATION FOR EACH HOUSE LATERAL ON THE GRADE SHEET.
 - THE CONTRACTOR SHALL NOTIFY THE CONSTRUCTION DIVISION BY TELEPHONE, MADISON 9-4741 EXT. 6381 AT LEAST 24 HOURS BEFORE STARTING ANY WORK UNDER THIS CONTRACT.
 - SPECIFICATIONS DATED MAY 25, 1962 APPLY IN THE CONSTRUCTION OF THIS PROJECT.
 - (a) NO CONSTRUCTION WILL BE PERMITTED IN SHED AREAS UNLESS ACCEPTABLE CERTIFICATION IS SUBMITTED TO THE CONSTRUCTION DIVISION OF THE COUNTY ENGINEER'S DEPARTMENT THAT COMPLETION IS GREATER THAN 80%. (b) IF COMPLETION IS LESS THAN 80% THE SEWER MUST BE CROWNED & SPECIAL M.H. BASES CONSTRUCTED AS SHOWN ON PLANS.
 - IF COMPLETION IS GREATER THAN 80% CHIMNEY AND SPECIAL M.H. BASES ARE NOT REQUIRED.
 - BEFORE THE COMMENCEMENT OF CONSTRUCTION IT IS DETERMINED THAT THERE IS LESS THAN FOUR FEET OF COVER OVER THE TOP OF A MANHOLE OR HOUSE LATERAL V.C.P. SEWER WHICH IS NOT INDICATED ON THE PLANS, THE PIPE SHALL BE ENCASED PER S-9-172, CASE II, UNLESS OTHERWISE APPROVED BY THE COUNTY ENGINEER. ALL SEWER AND SPECIAL TRENCH SAFETY DEVICES WILL BE THOROUGHLY ENFORCED.

ENGINEERING SERVICE CORPORATION
 1127 W. WASHINGTON BLVD.
 LOS ANGELES 15, CALIF. RI. 9-7281

| REVISIONS | | TRACED BY |
|-----------|--|-----------------------|
| | | CF-ES-JB |
| | | DES'G'D BY H.S.T.-CF |
| | | CK'D BY C.H. P. 10/20 |
| | | SUBMITTED |

SUB STRUCTURES OK'D

| W. O. NO. | DWG. NO. | DATE | SCALE | L.S. | P.B. |
|-----------|----------|-----------|----------|------|------|
| 7543-4 | | AUG. 1962 | AS NOTED | 1235 | |

NO CONNECTIONS FOR THE DISPOSAL OF INDUSTRIAL WASTES SHALL BE MADE TO SEWERS SHOWN ON THESE DRAWINGS WITHOUT WRITTEN PERMISSION FROM THE CHIEF ENGINEER AND GENERAL MANAGER OF THE COUNTY SANITATION DISTRICTS.

NOTE: GRADES TO WHICH THIS IMPROVEMENT IS TO BE CONSTRUCTED ARE SHOWN ON PLANS AND PROFILES. GRADE POINTS FOR TOP OF CURBS, CENTER LINE OF STREETS, OR CENTER LINE OF ALLEYS ARE SHOWN BY CIRCLES ON PROFILES AT ALL POINTS BETWEEN DESIGNATED POINTS THE GRADE SHALL BE ESTABLISHED SO AS TO CONFORM TO A STRAIGHT LINE DRAWN BETWEEN SAID DESIGNATED POINTS. ELEVATIONS ARE IN FEET ABOVE U.S.C. & G.S. SEA LEVEL DATUM OF 1929. THIS DRAWING AND THE DATA HEREON ARE HEREBY MADE A PART OF THE SPECIFICATIONS. WORK SHALL BE CONSTRUCTED ACCORDING TO SPECIFICATIONS ON FILE IN THE OFFICE OF THE COUNTY ENGINEER AND SHALL BE PROSECUTED ONLY IN THE PRESENCE OF THE COUNTY ENGINEER. BEFORE WORK CAN BE STARTED, THE CONTRACTOR MUST OBTAIN A PERMIT TO EXCAVATE IN COUNTY STREETS FROM THE L.A. COUNTY ROAD DEPT. DISTRICT OFFICE NO. 3 AND PAY A FEE TO THE COUNTY ENGINEER, ROOM 303 COUNTY ENGINEER'S BUILDING AND A FEE TO THE COUNTY ENGINEER SUFFICIENT TO COVER THE COST OF CONSTRUCTION INSPECTION AND RECORD PLANS. APPROVAL OF THIS PLAN BY THE COUNTY OF LOS ANGELES DOES NOT CONSTITUTE A REPRESENTATION AS TO THE ACCURACY OF THE LOCATION OF OR THE EXISTENCE OR NON-EXISTENCE OF ANY UNDERGROUND UTILITY PIPE, OR STRUCTURE WITHIN THE LIMITS OF THIS PROJECT. THIS NOTE APPLIES TO ALL PAGES. IF WORK IS TO BE DONE IN A STATE HIGHWAY, A PERMIT MUST BE OBTAINED FROM THE STATE OF CALIFORNIA, DIVISION OF HIGHWAYS, 126 SOUTH SPRING STREET.

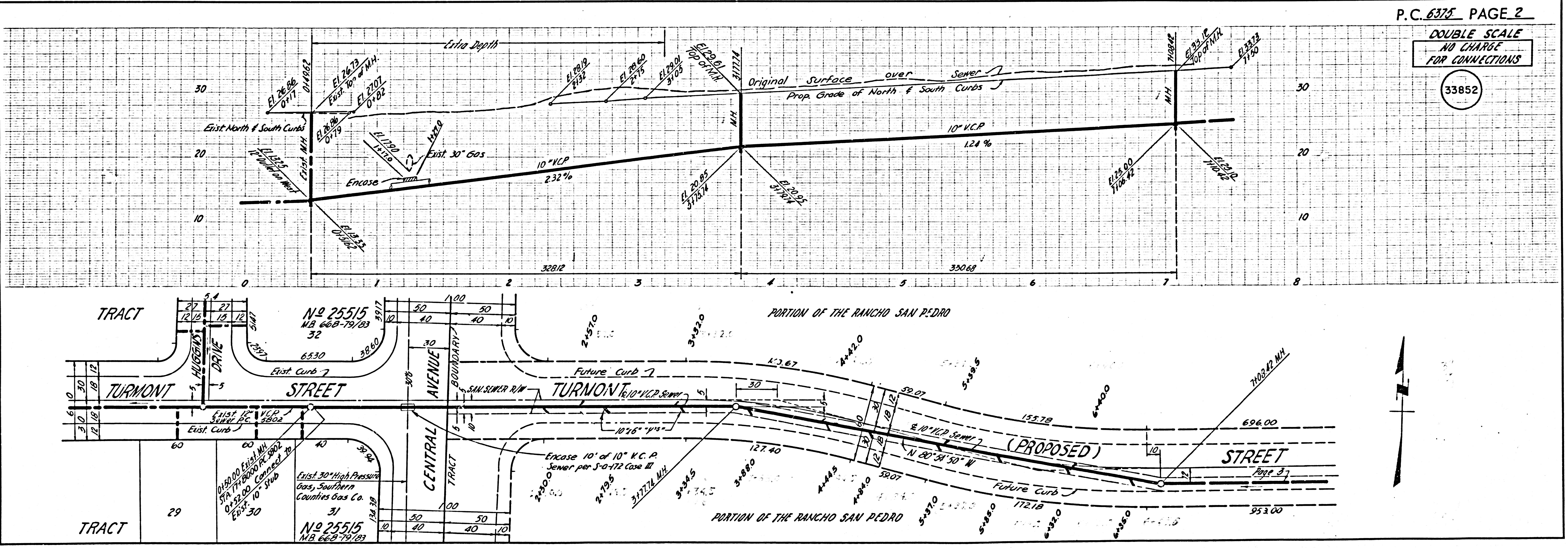
COUNTY OF LOS ANGELES, CALIFORNIA

APPROVED, JOHN A. LAMBIE, COUNTY ENGINEER
 APPROVED, J. J. PARRINELLO, CHIEF ENGINEER

By: *R. E. Kuhn* ASST. SANITATION ENGINEER
J. J. Parrinello OFFICE ENGINEER

CHECKED BY: *R. E. Kuhn* 1-21-63
 OFFICE OF COUNTY ENGINEER, REG. C. E. NO. 3486

SUBMITTED BY: *Jack C. Lansing*
 PALMS VERDES-CENTINELA VALLEY REGIONAL ENGINEER.



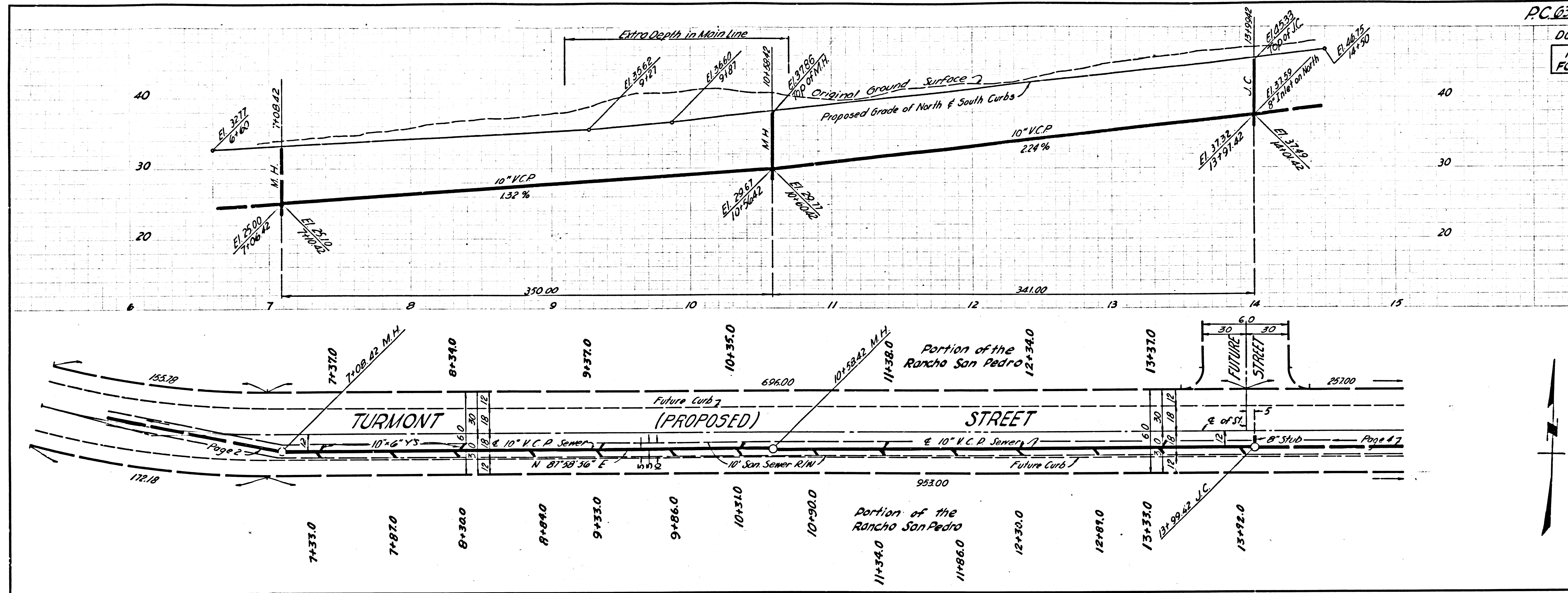
P.C. 6375 PAGE 2

DOUBLE SCALE
 NO CHARGE
 FOR CONNECTIONS

33852

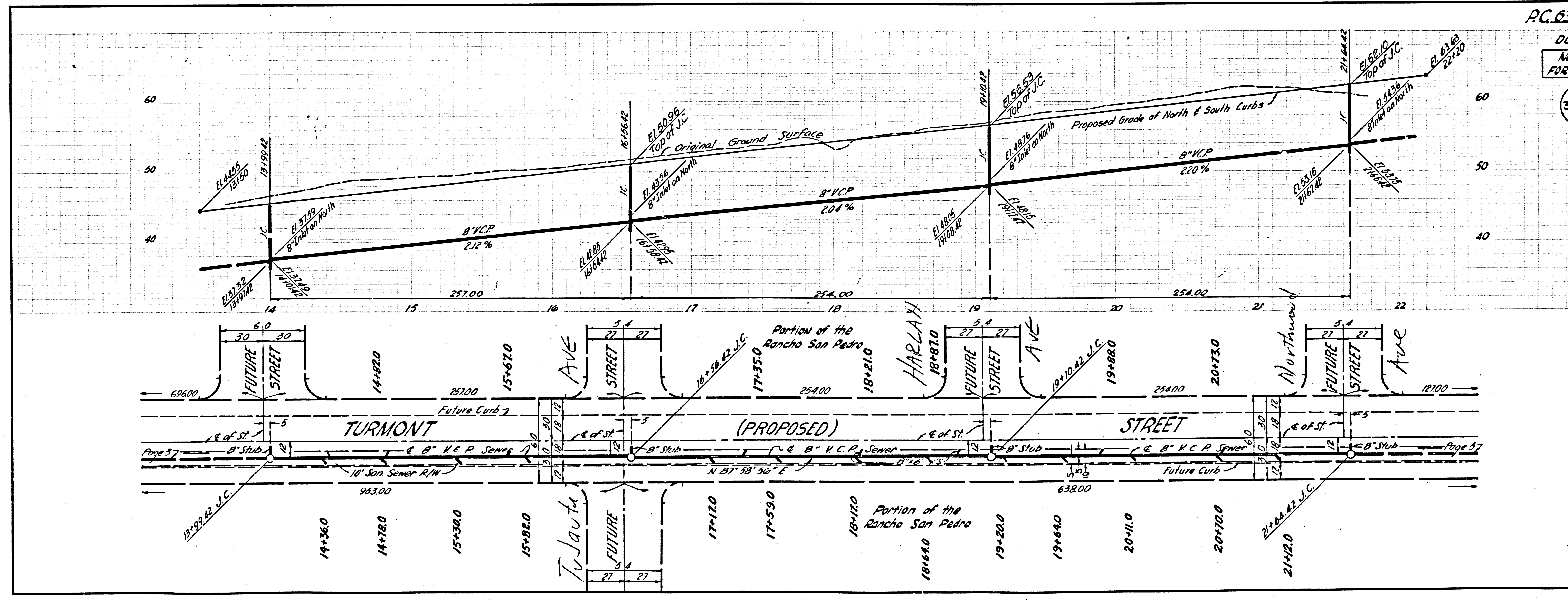
DOUBLE SCALE
NO CHARGE
FOR CONNECTION

33853



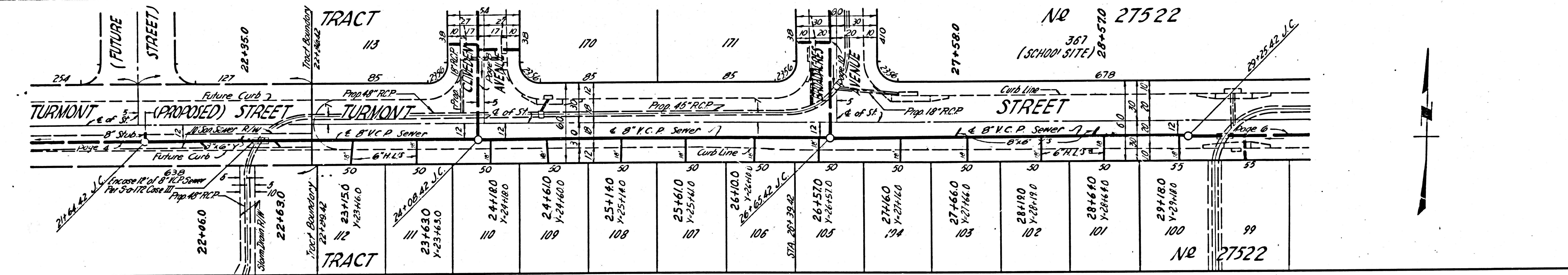
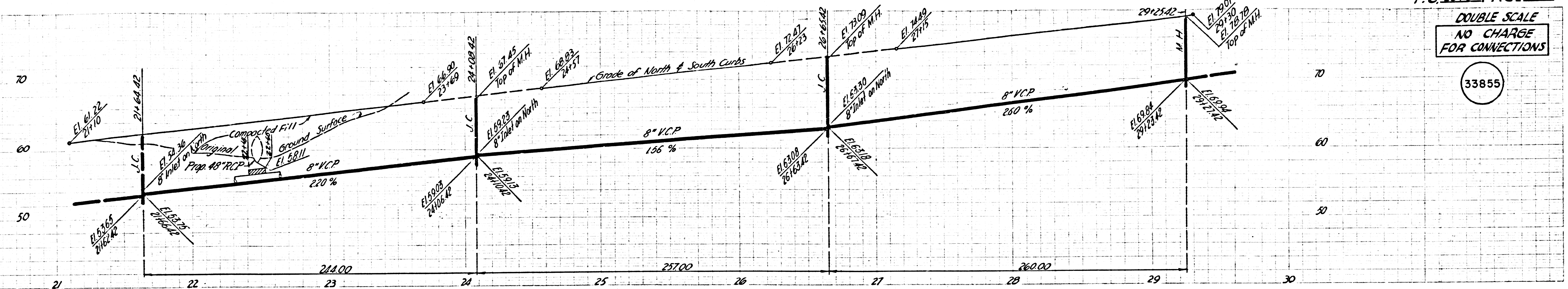
DOUBLE SCALE
NO CHARGE
FOR CONNECTION

33854



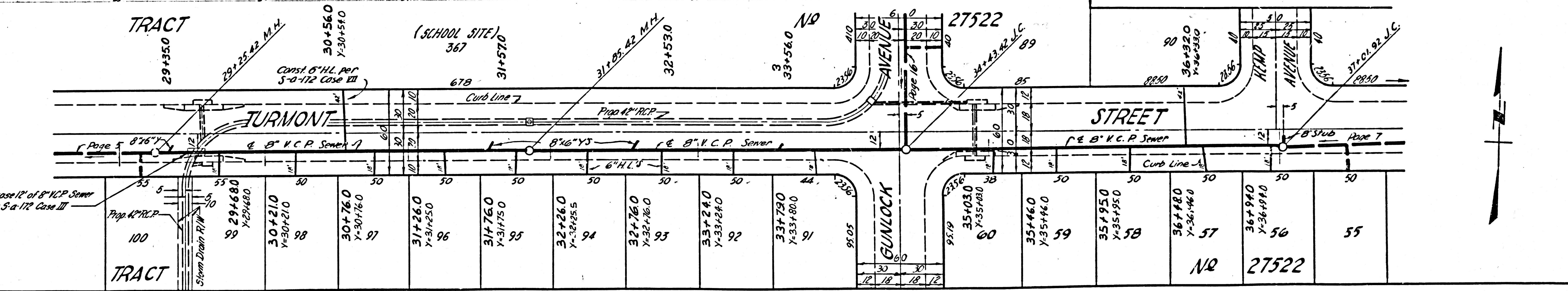
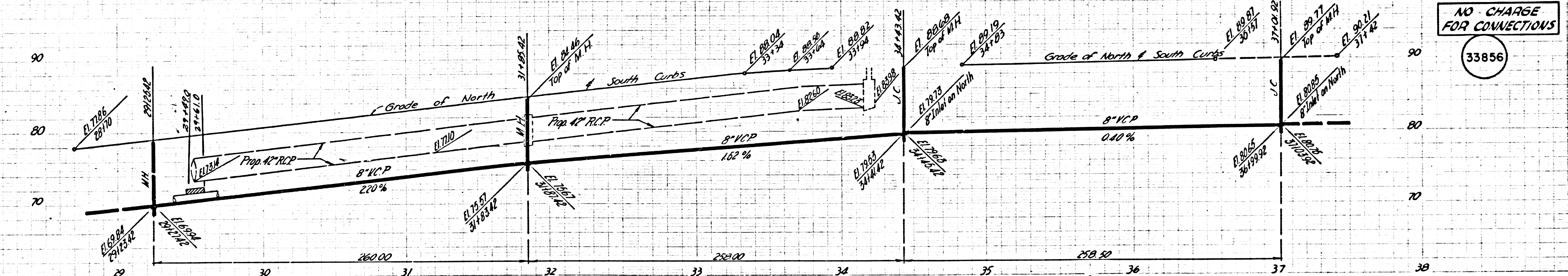
DOUBLE SCALE
NO CHARGE
FOR CONNECTIONS

33855



DOUBLE SCALE
NO CHARGE
FOR CONNECTIONS

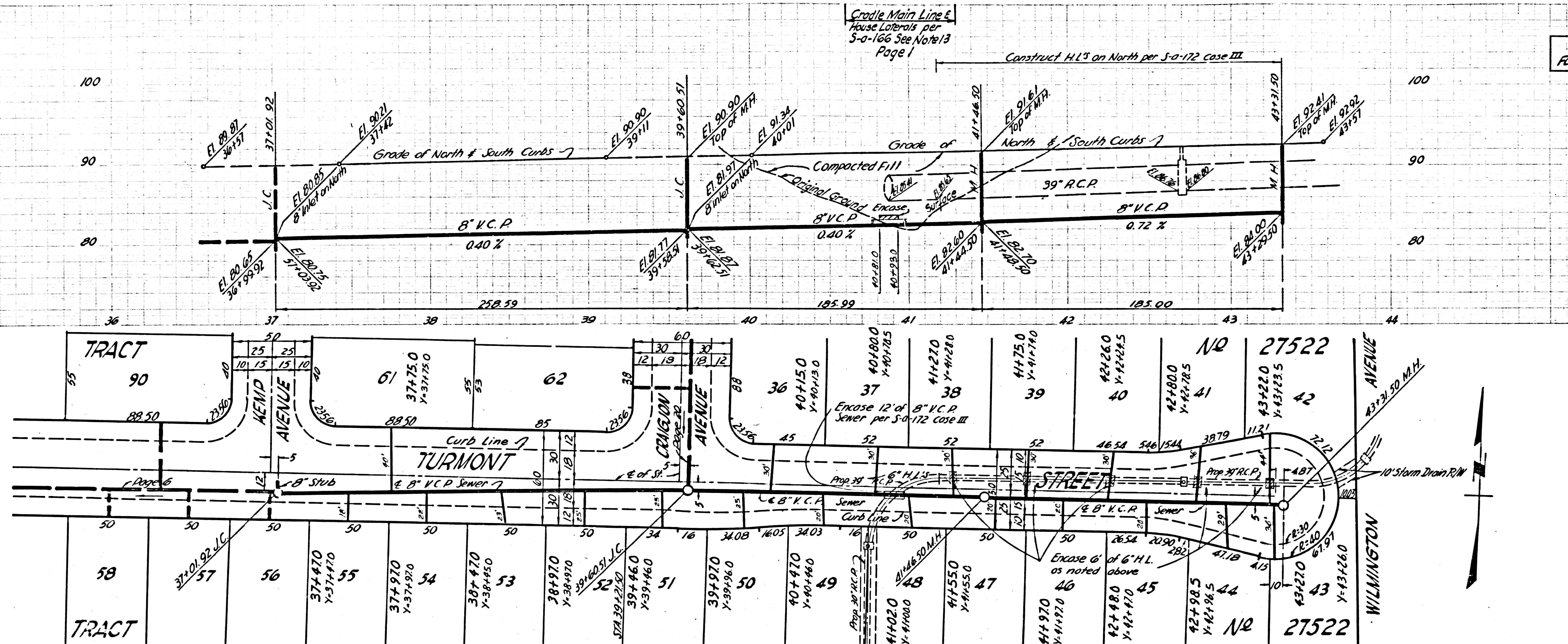
33856



DOUBLE SCALE

NO CHARGE FOR CONNECTIONS

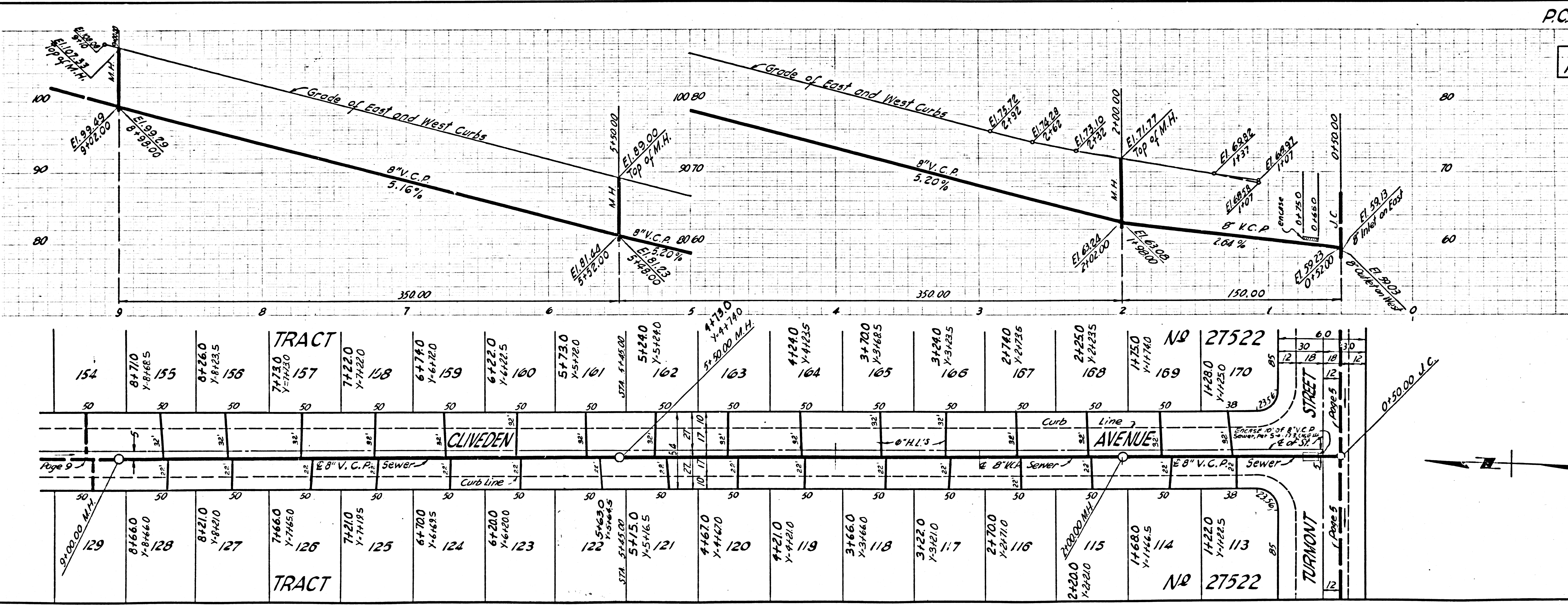
33857



DOUBLE SCALE

NO CHARGE FOR CONNECTIONS

33858

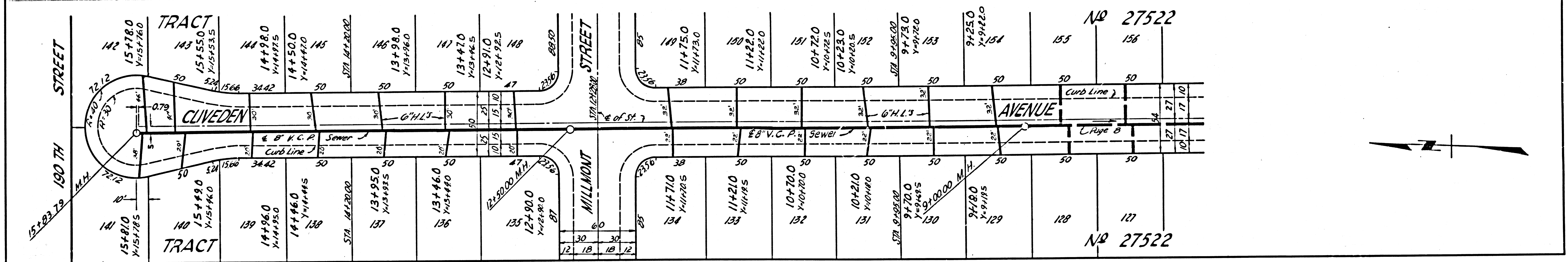
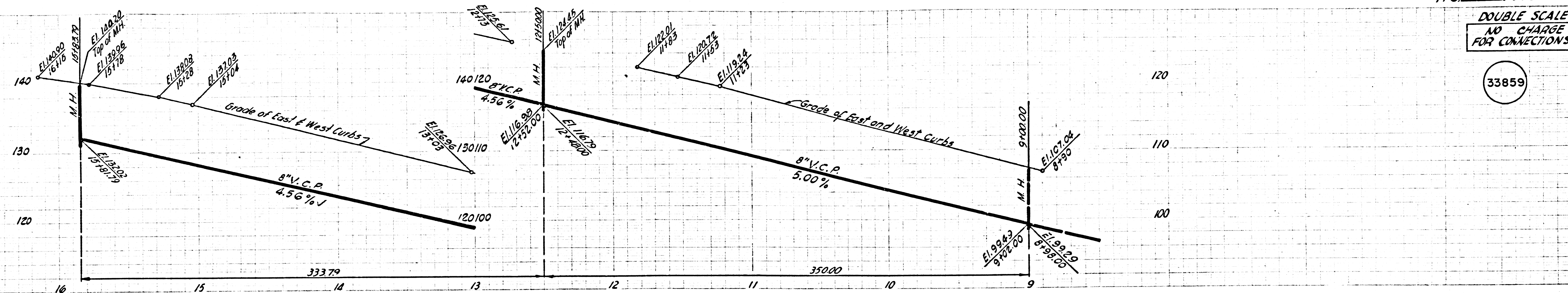


PC 6375 PAGE 7

PC 6375 PAGE 8

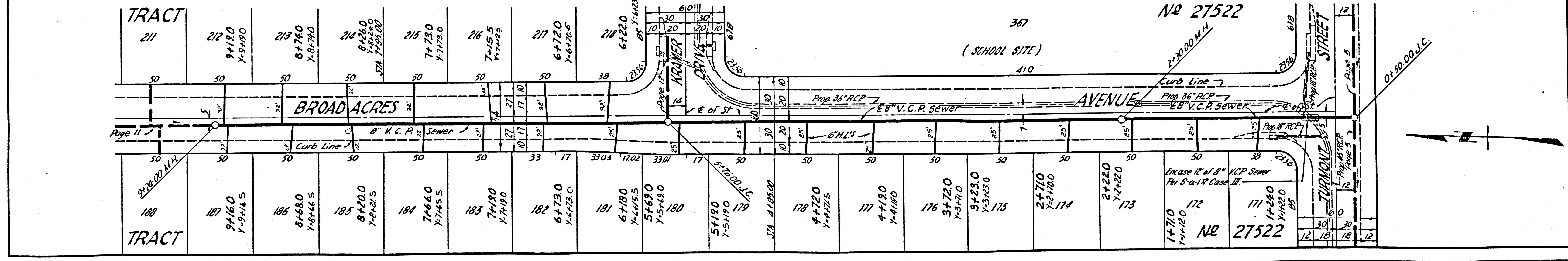
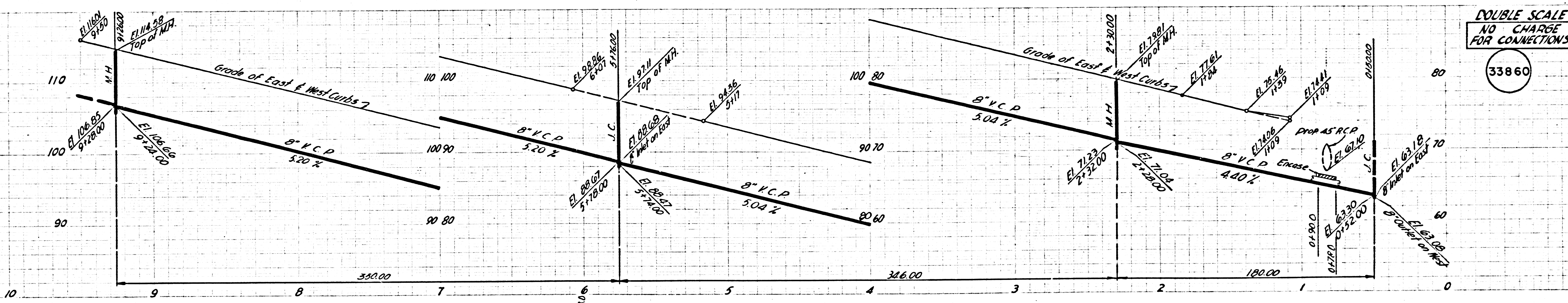
DOUBLE SCALE
NO CHARGE
FOR CONNECTIONS

33859



DOUBLE SCALE
NO CHARGE
FOR CONNECTIONS

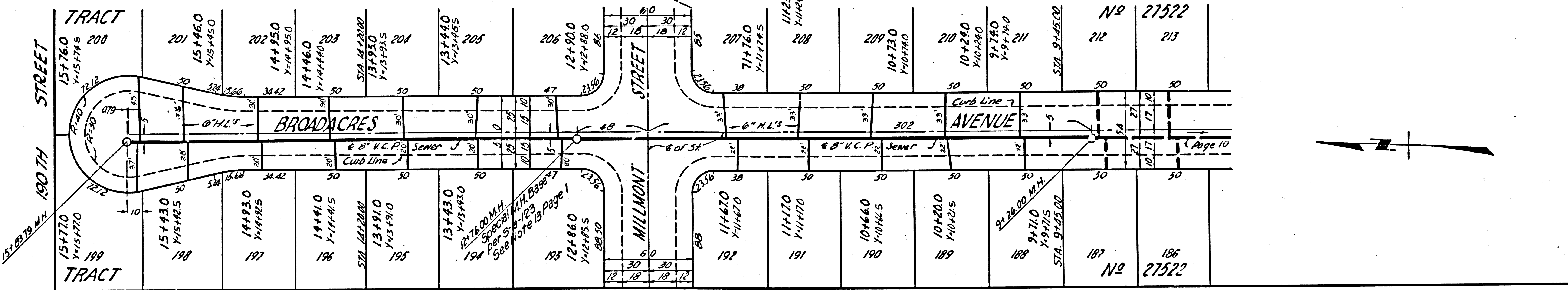
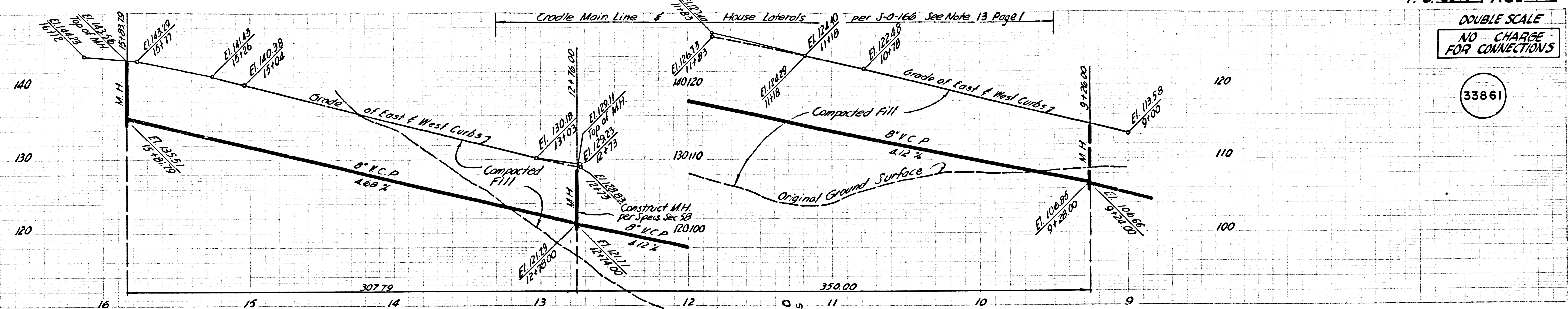
33860



S.E.E. 100 L.A. COUNTY SEWER SHEET NO. 6 80 CAL. BLUEPRINT CO.

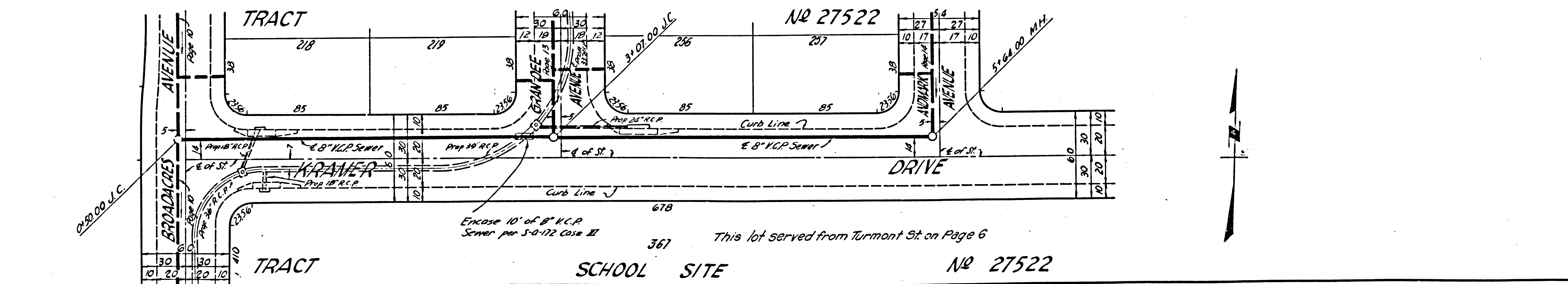
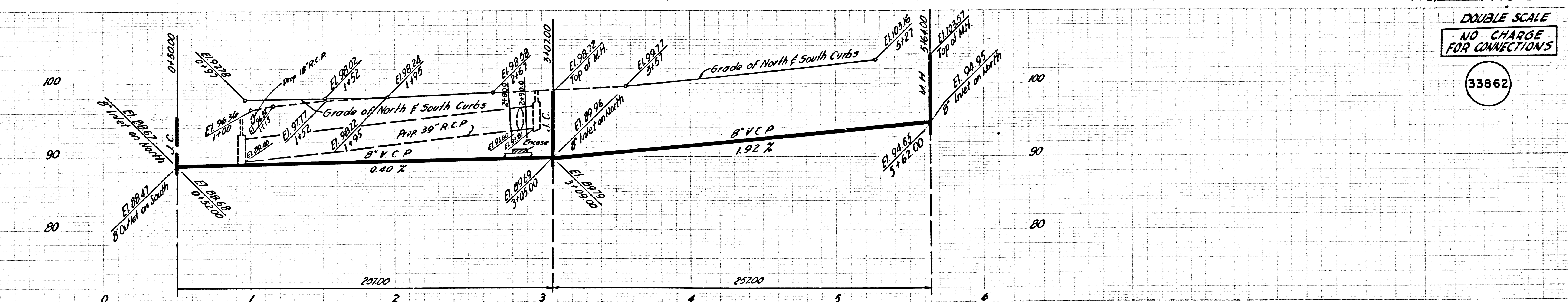
DOUBLE SCALE
NO CHARGE
FOR CONNECTIONS

33861



DOUBLE SCALE
NO CHARGE
FOR CONNECTIONS

33862

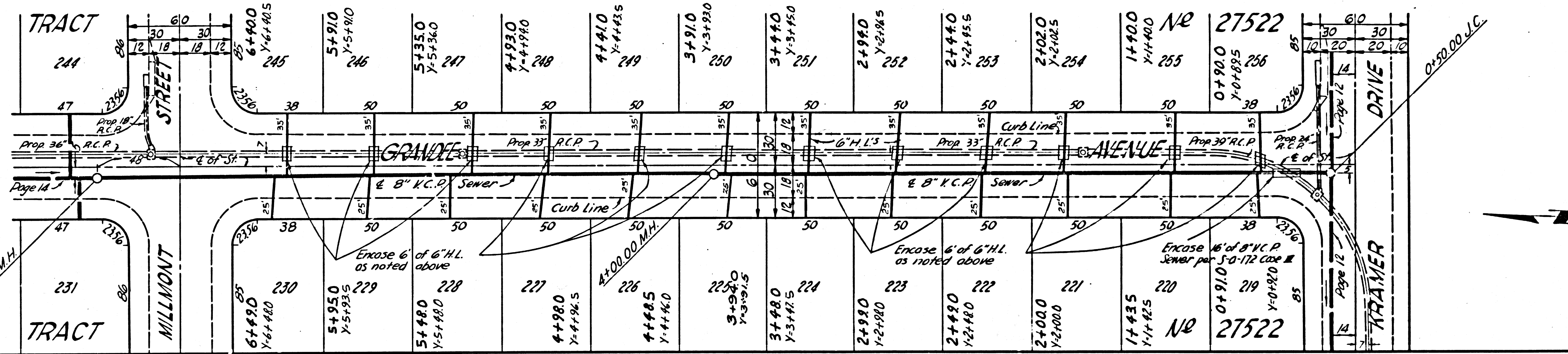
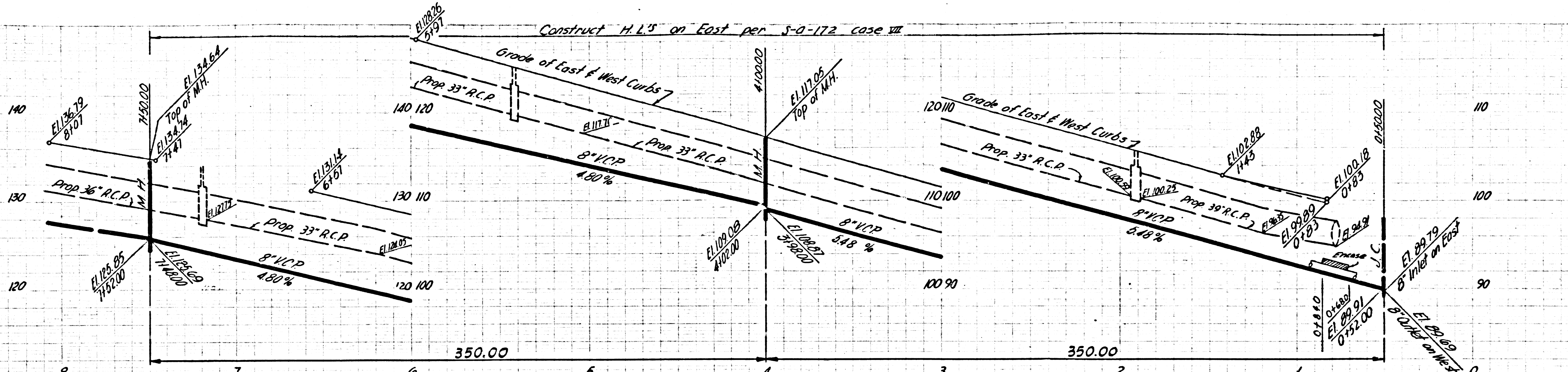


S.D.E. 124 L.A. COUNTY SEWER SHEET NO. 2 90 CAL. BLUEPRINT CO.

DOUBLE SCALE

NO CHARGE FOR CONNECTIONS

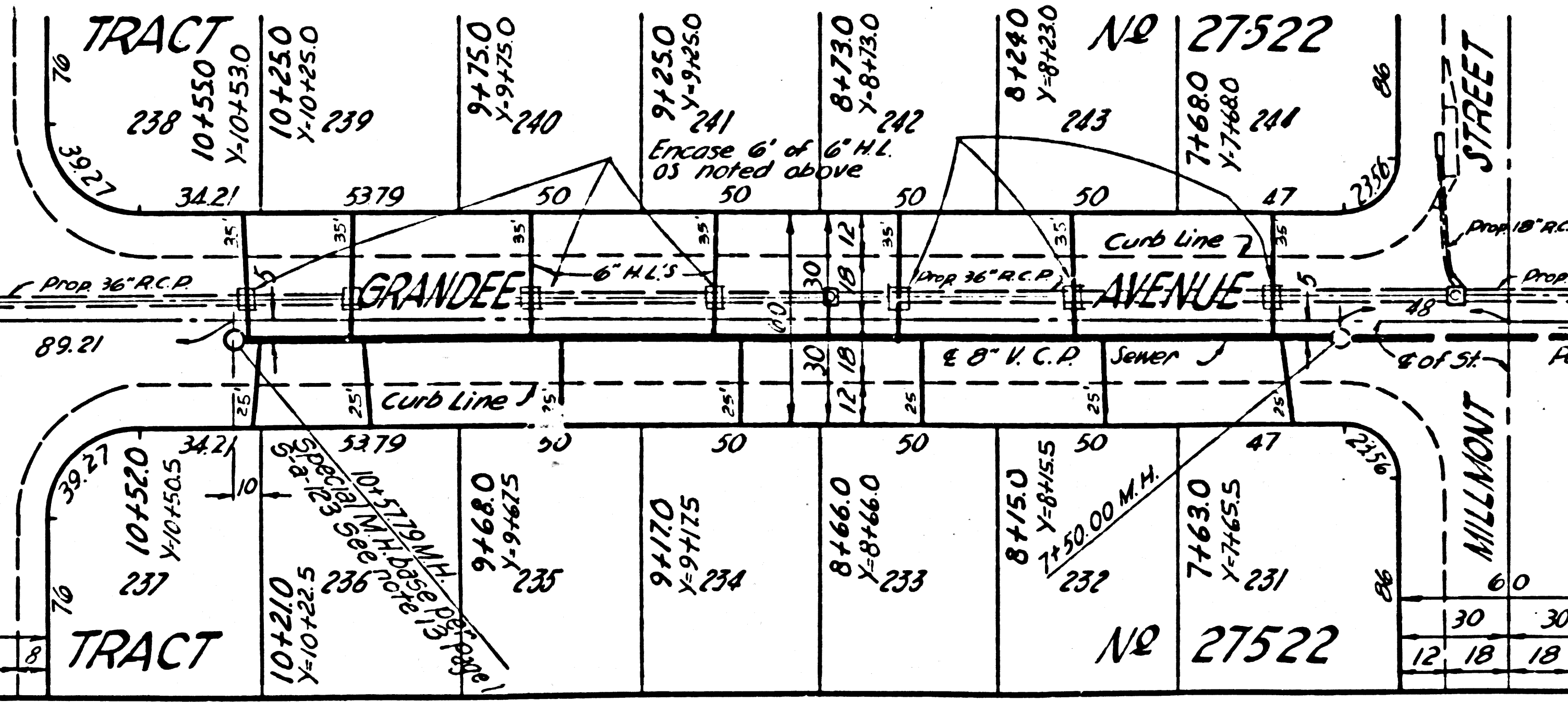
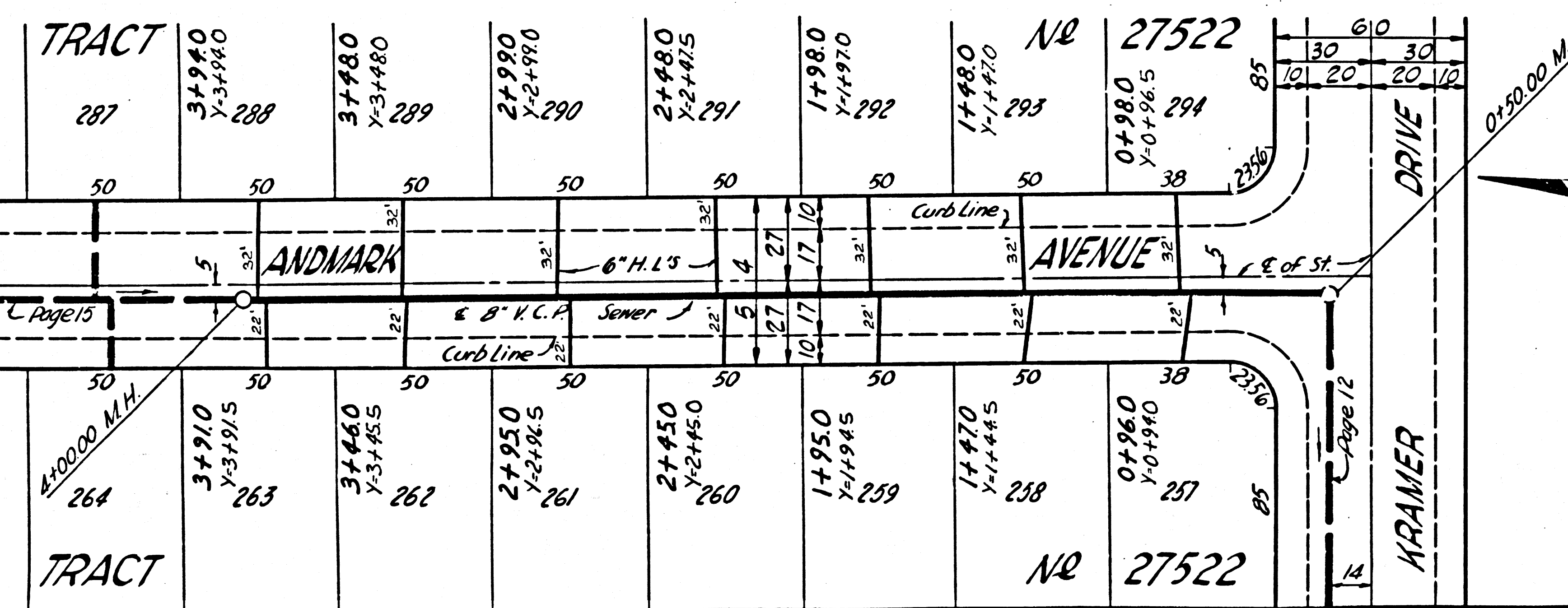
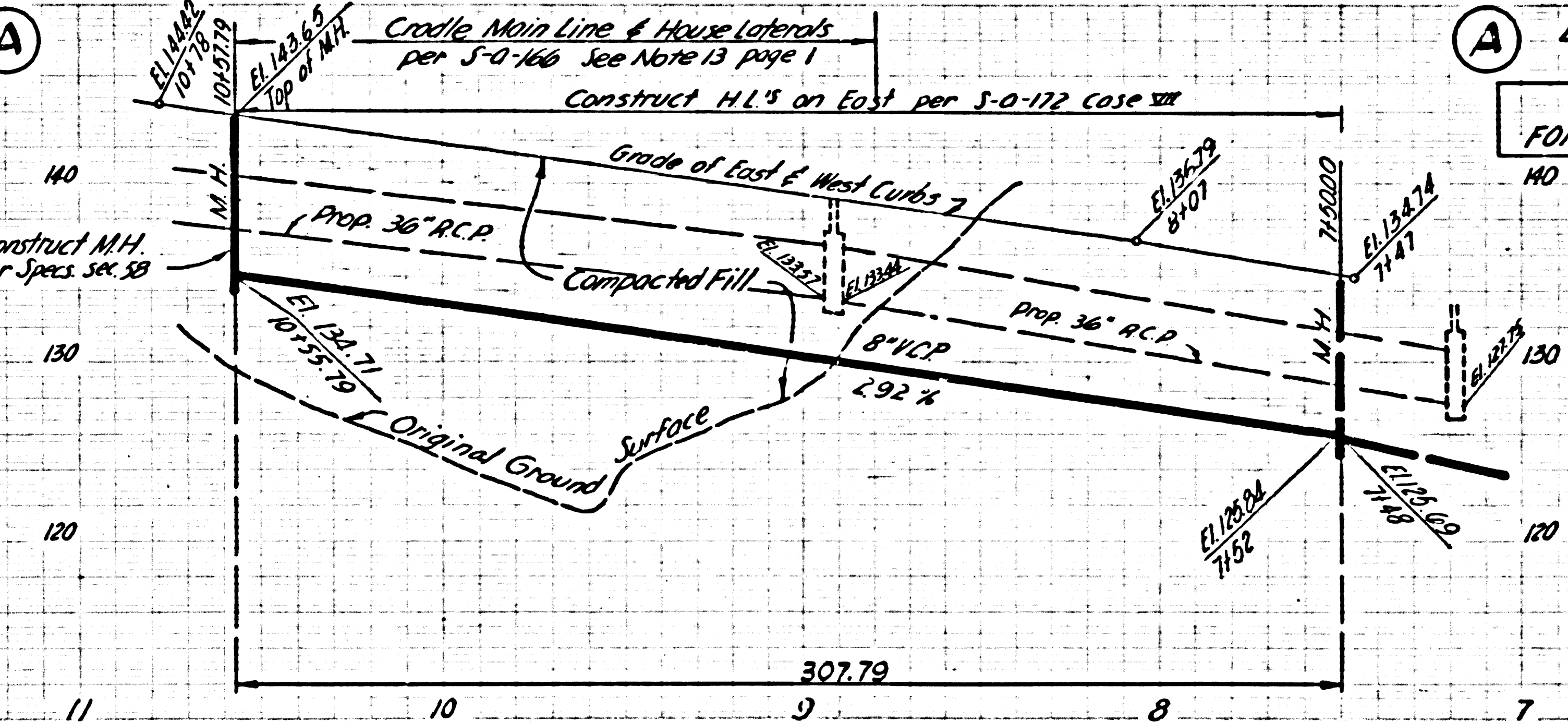
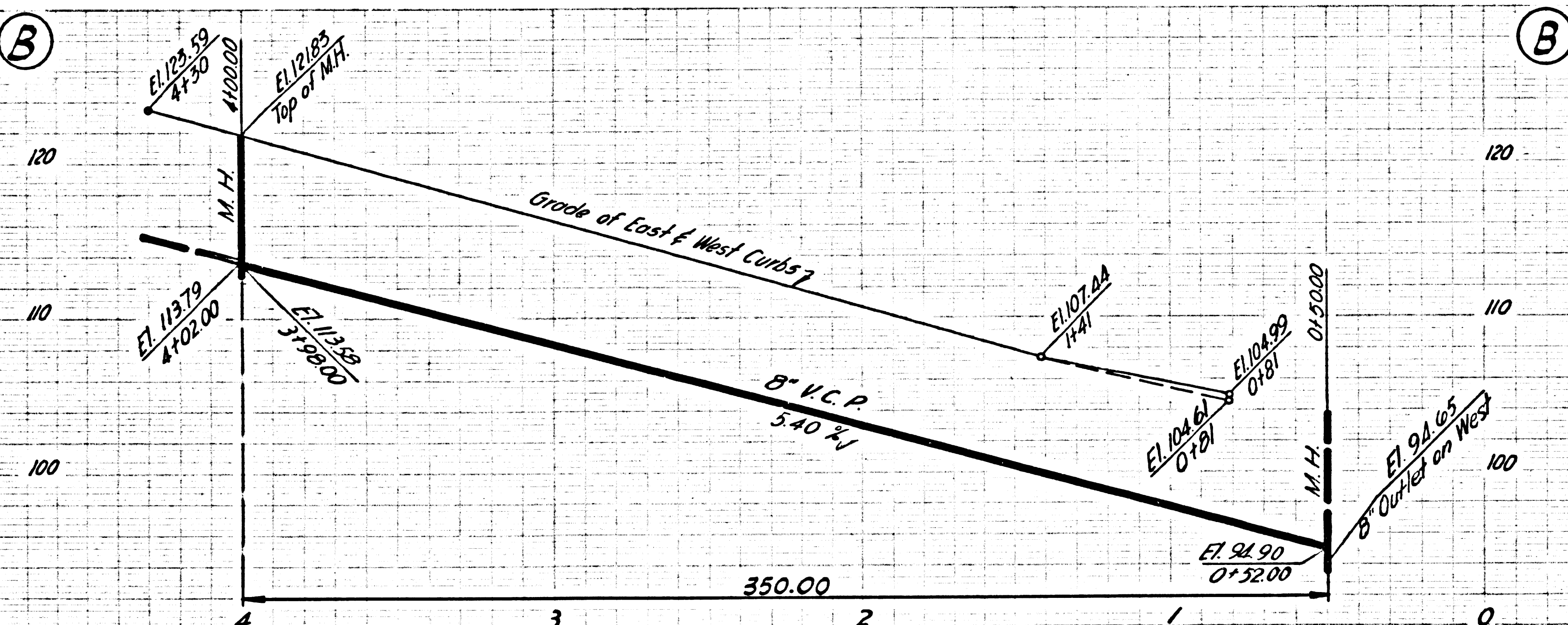
33863



DOUBLE SCALE

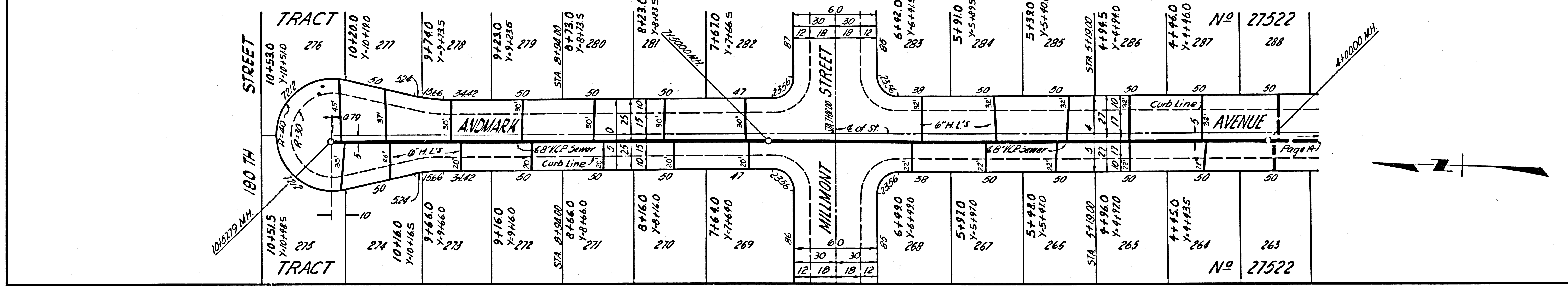
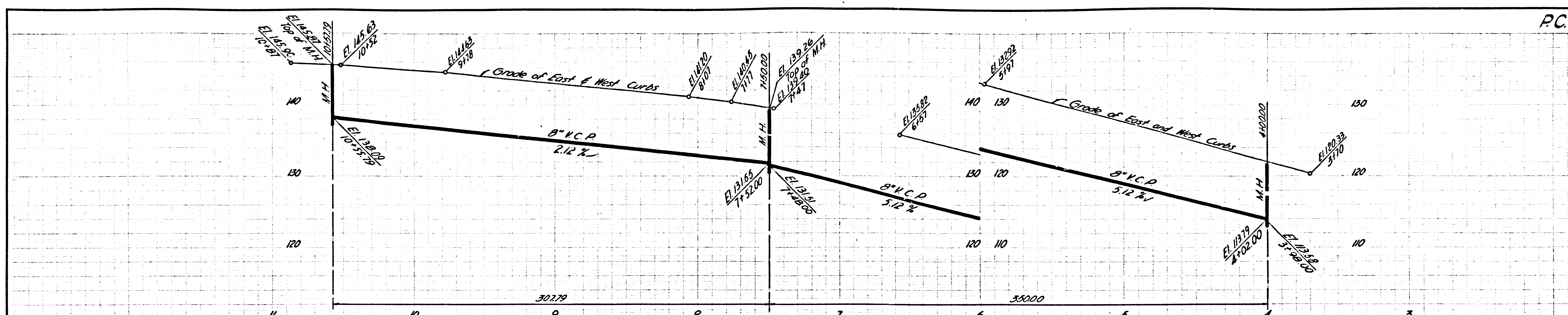
NO CHARGE FOR CONNECTIONS

33864



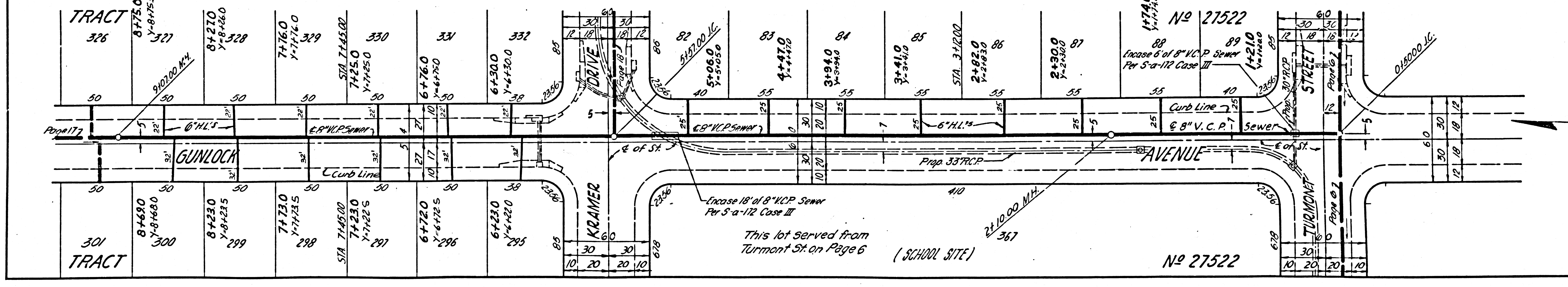
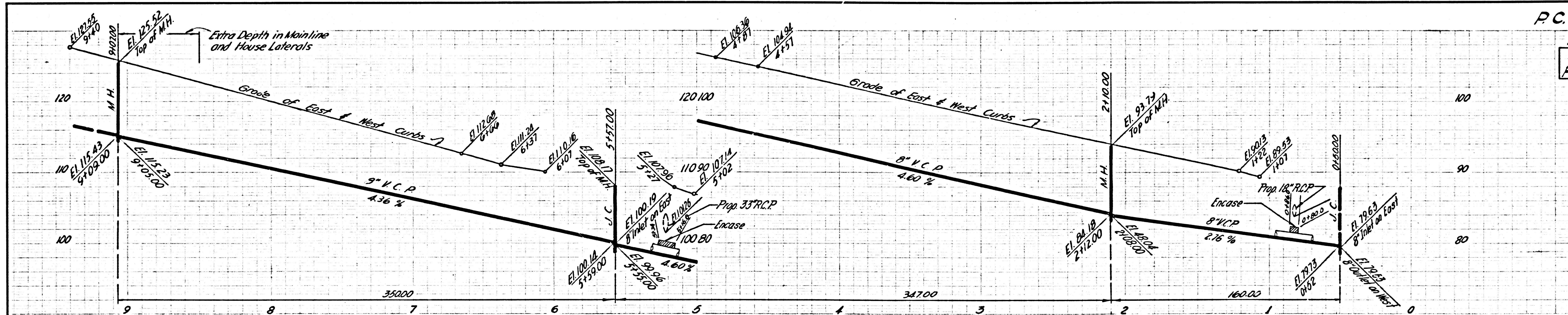
DOUBLE SCALE
NO CHARGE
FOR CONNECTIONS

33865



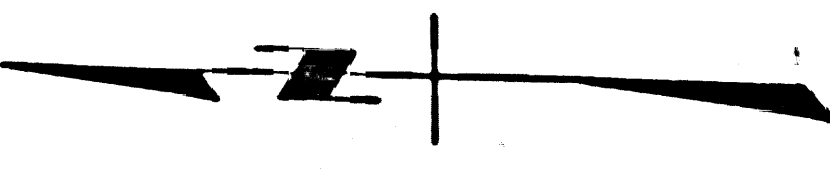
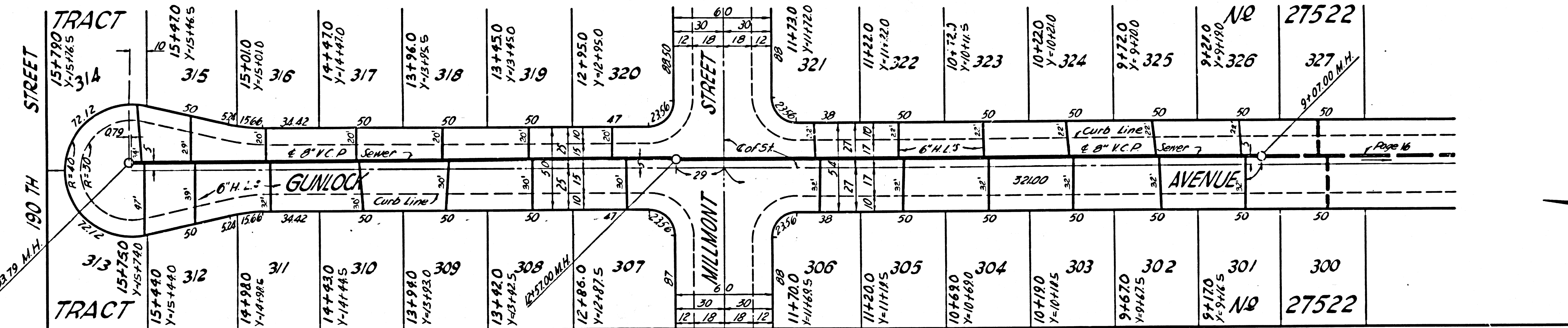
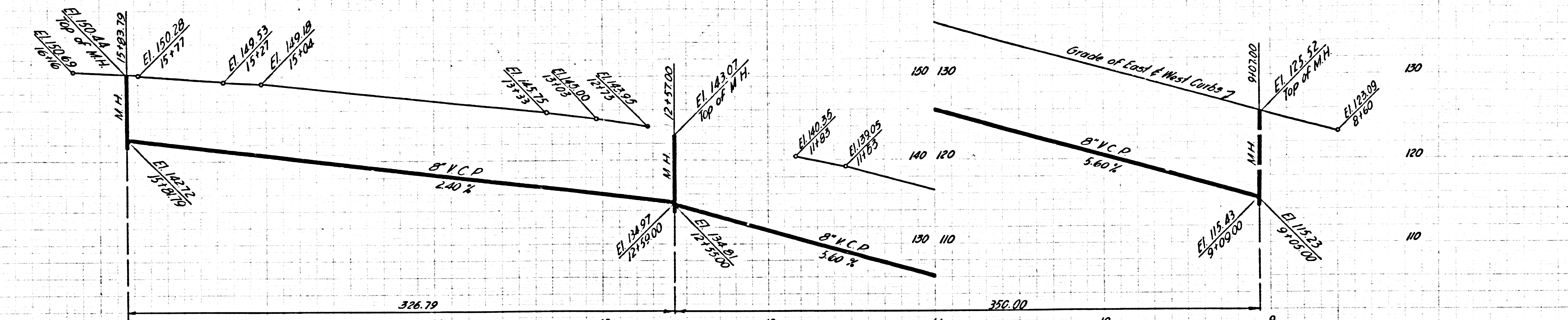
DOUBLE SCALE
NO CHARGE
FOR CONNECTIONS

33866



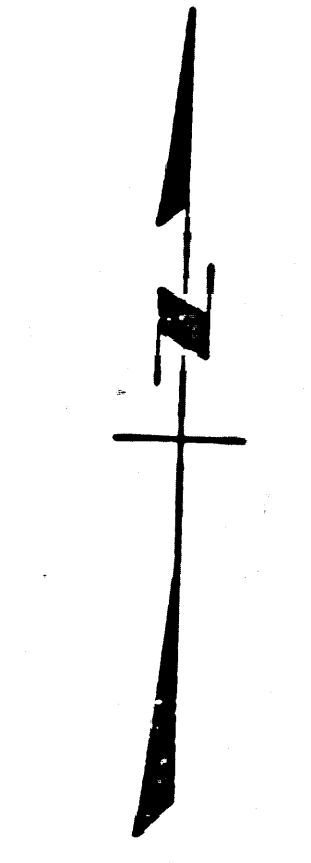
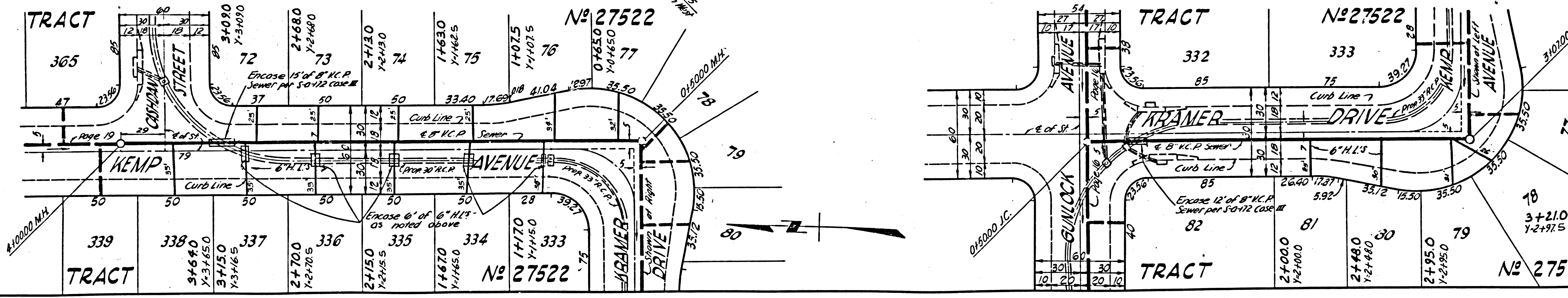
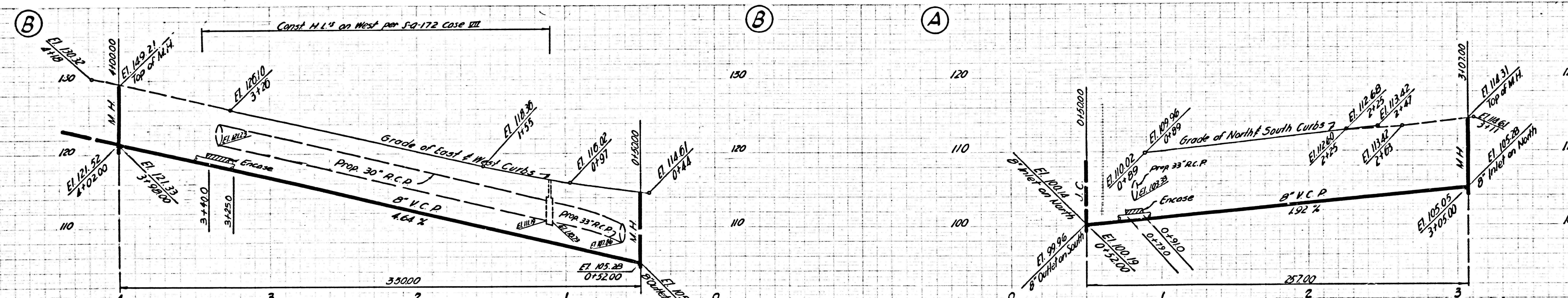
DOUBLE SCALE
NO CHARGE
FOR CONNECTIONS

33867



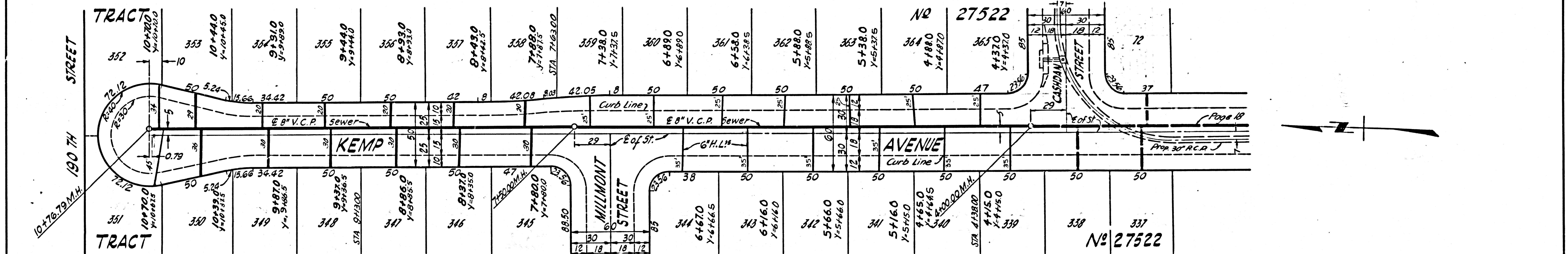
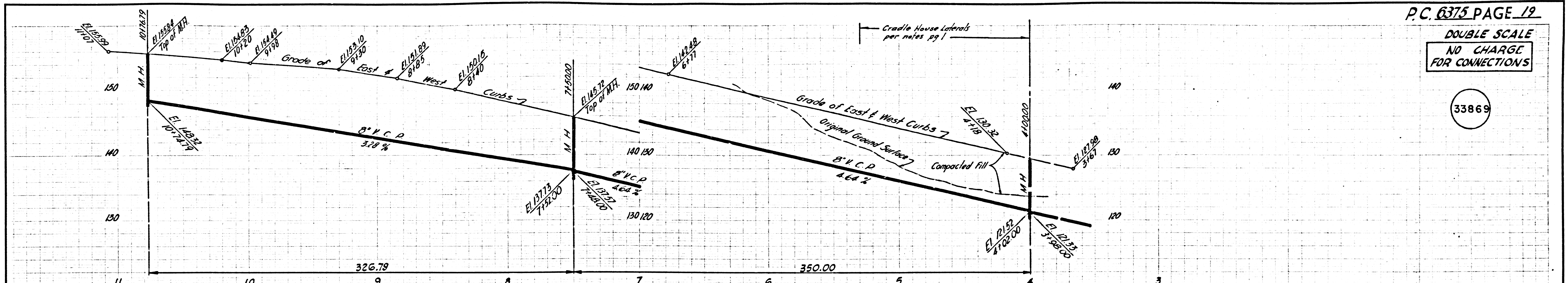
DOUBLE SCALE
NO CHARGE
FOR CONNECTIONS

33868



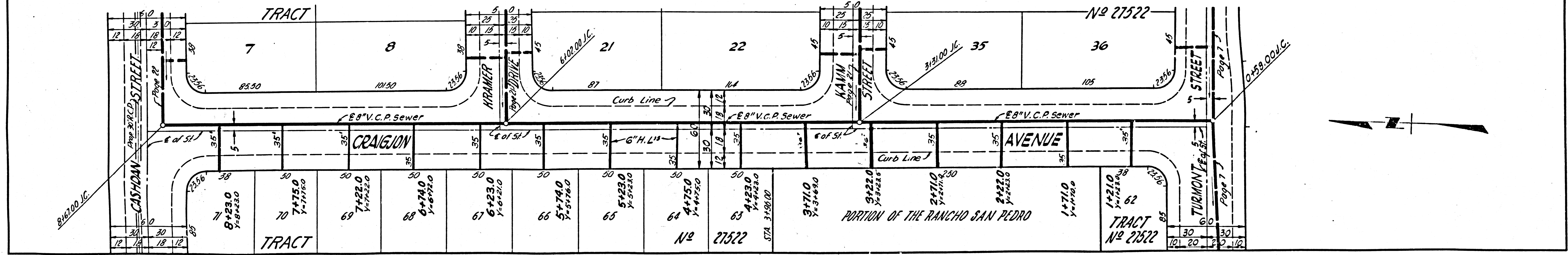
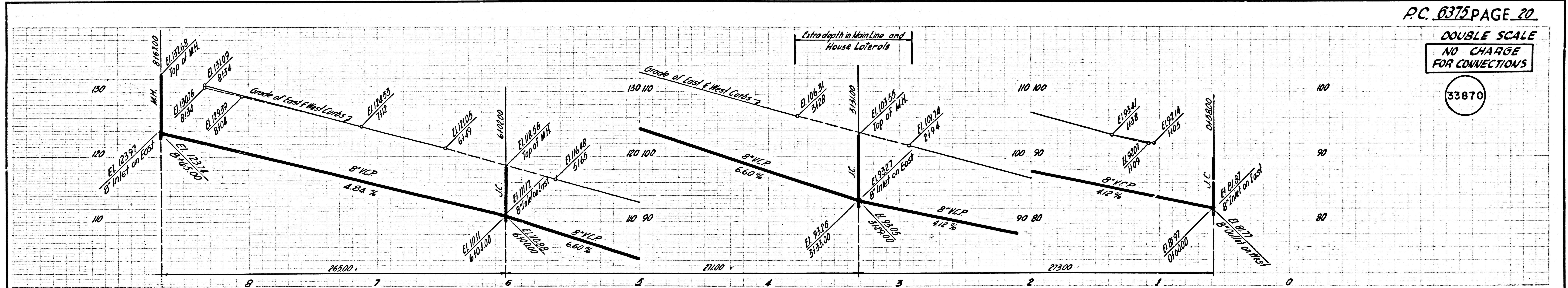
DOUBLE SCALE
NO CHARGE
FOR CONNECTIONS

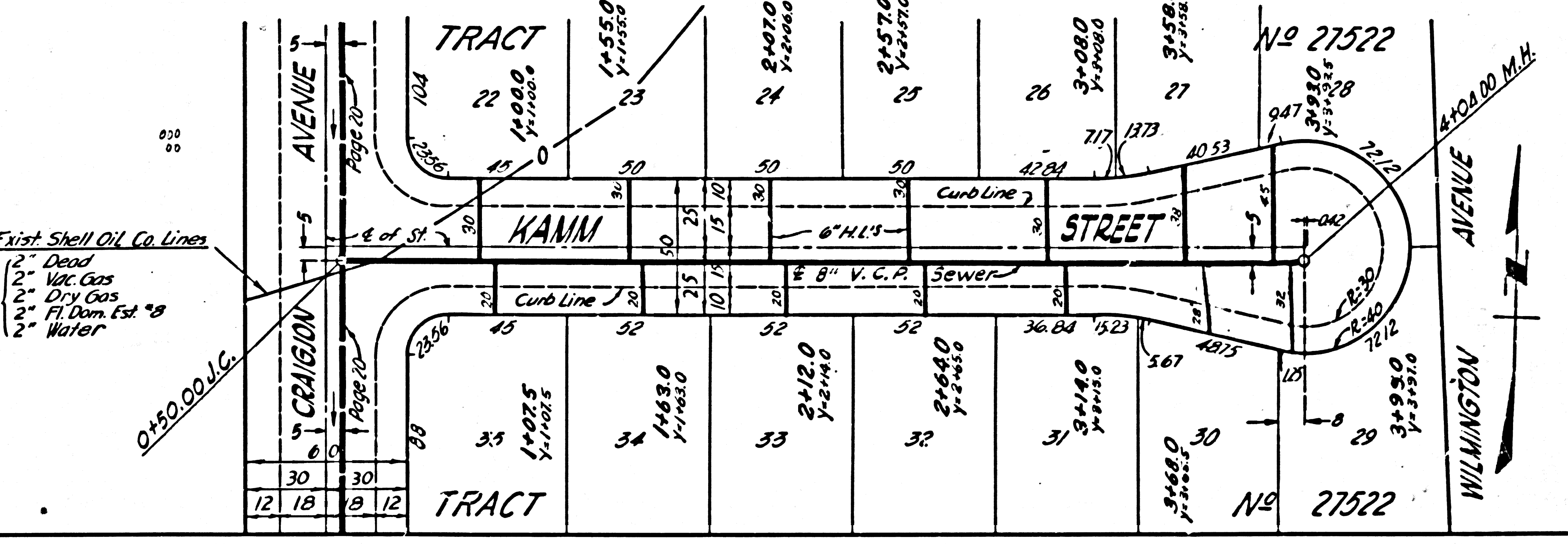
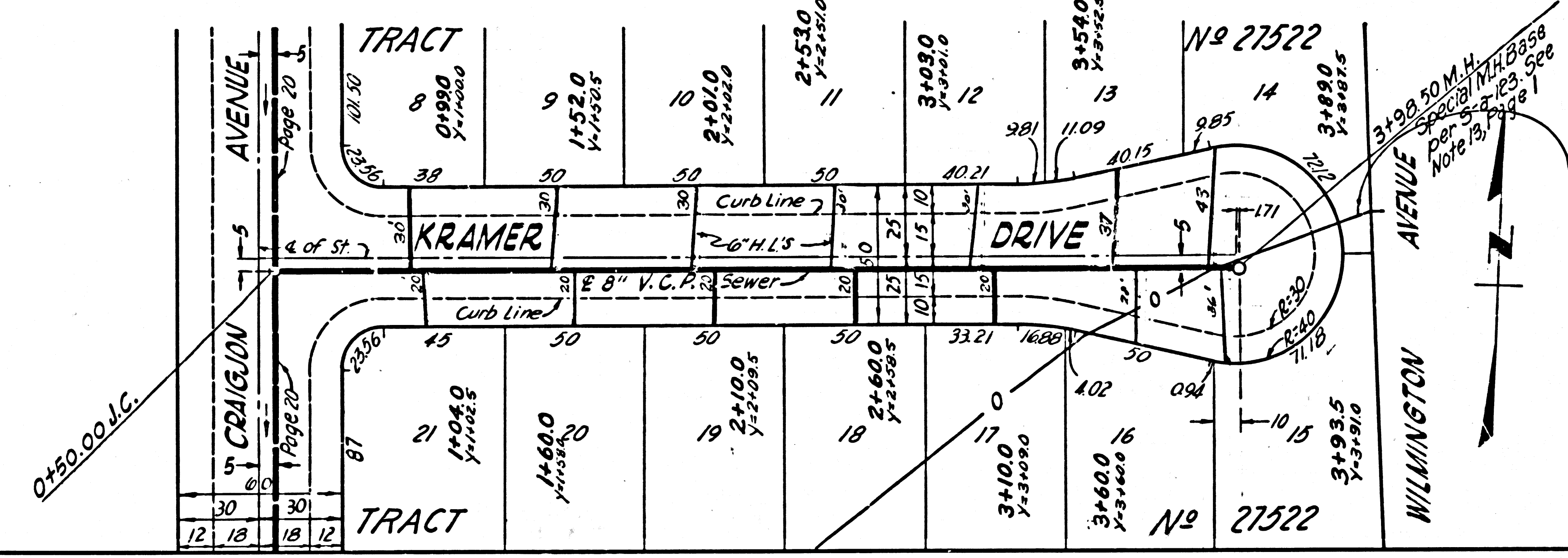
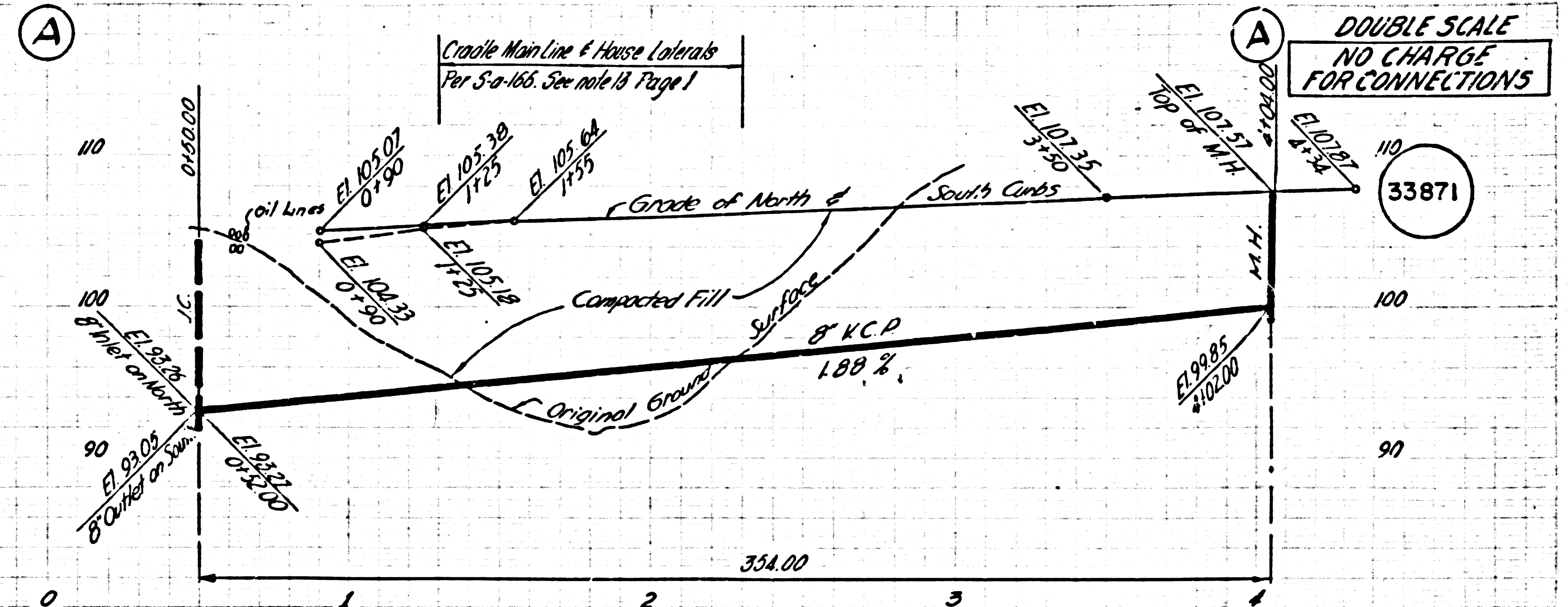
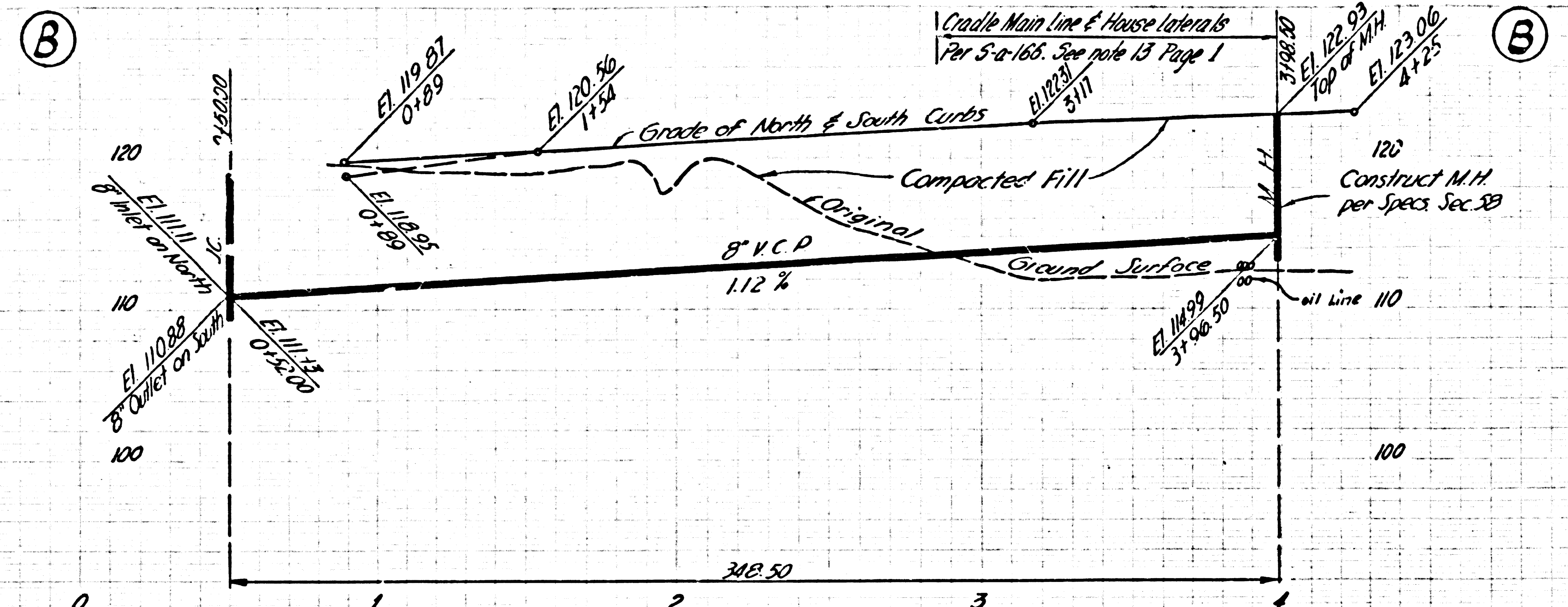
33869



DOUBLE SCALE
NO CHARGE
FOR CONNECTIONS

33870





DOUBLE SCALE
NO CHARGE
FOR CONNECTIONS

