

BM S.G. 612 EL. 334.825 S.R.L. in East curb of Baldwin Ave.
±3' N. of curb return of NE corner of Baldwin Ave. and
La Rosa Drive. MND TEL Arcadia Quad 1955.

TEMPLE CITY BLDG. DIST. NO. 508

PROFILE ALIGNMENT AND GRADE OF P.C. 6377
SANITARY SEWERS PAGE 1

TO BE CONSTRUCTED IN
SANITARY SEWER R/W WEST SIDE
OF BALDWIN AVE.

PRIVATE CONTRACT NO. 6377

W.S. 44
1 SHEETS; 2 PAGES

SCALE: VERT. 1"=4' HORIZ. 1"=40' NOV. 1962
PREPARED IN THE OFFICES OF

32965

By: Chas. N. Bell
REG. C. E. NO. 2839

FOR LEGEND SEE PLAN NO. S-A-64

NOTE:
GRADES TO WHICH THIS IMPROVEMENT IS TO BE CONSTRUCTED ARE SHOWN ON PLANS AND PROFILES. GRADE POINTS FOR TOP OF CURBS, CENTER LINE OF STREETS, OR CENTER LINE OF ALLEYS ARE SHOWN BY CIRCLES ON PROFILES. AT ALL POINTS BETWEEN DESIGNATED POINTS THE GRADE SHALL BE ESTABLISHED SO AS TO CONFORM TO A STRAIGHT LINE DRAWN BETWEEN SAID DESIGNATED POINTS.
ELEVATIONS ARE IN FEET ABOVE U.S.C. & G.S. SEA LEVEL DATUM OF 1929.
THIS DRAWING AND THE DATA HEREON ARE HEREBY MADE A PART OF THE SPECIFICATIONS.
WORK SHALL BE CONSTRUCTED ACCORDING TO SPECIFICATIONS ON FILE IN THE OFFICE OF THE CITY ENGINEER AND SHALL BE PROSECUTED ONLY IN THE PRESENCE OF THE CITY ENGINEER.
BEFORE WORK CAN BE STARTED, THE CONTRACTOR MUST OBTAIN A PERMIT TO EXCAVATE IN CITY STREETS FROM THE L.A. COUNTY ROAD DEPT., DISTRICT OFFICE NO. 2, AND MAKE A DEPOSIT WITH THE CITY OF TEMPLE CITY \$26.64 PER LINEAL FOOT, TEMPLE CITY, SUFFICIENT TO COVER THE COST OF CONSTRUCTION INSPECTION AND RECORD PLANS.
APPROVAL OF THIS PLAN BY THE CITY OF TEMPLE CITY DOES NOT CONSTITUTE A REPRESENTATION AS TO THE ACCURACY OF THE LOCATION OF OR THE EXISTENCE OR NON-EXISTENCE OF ANY UNDERGROUND UTILITY PIPE, OR STRUCTURE WITHIN THE LIMITS OF THIS PROJECT. THIS NOTE APPLIES TO ALL PAGES.
IF WORK IS TO BE DONE IN A STATE HIGHWAY, A PERMIT MUST BE OBTAINED FROM THE STATE OF CALIFORNIA, DIVISION OF HIGHWAYS, 120 SOUTH SPRING STREET.

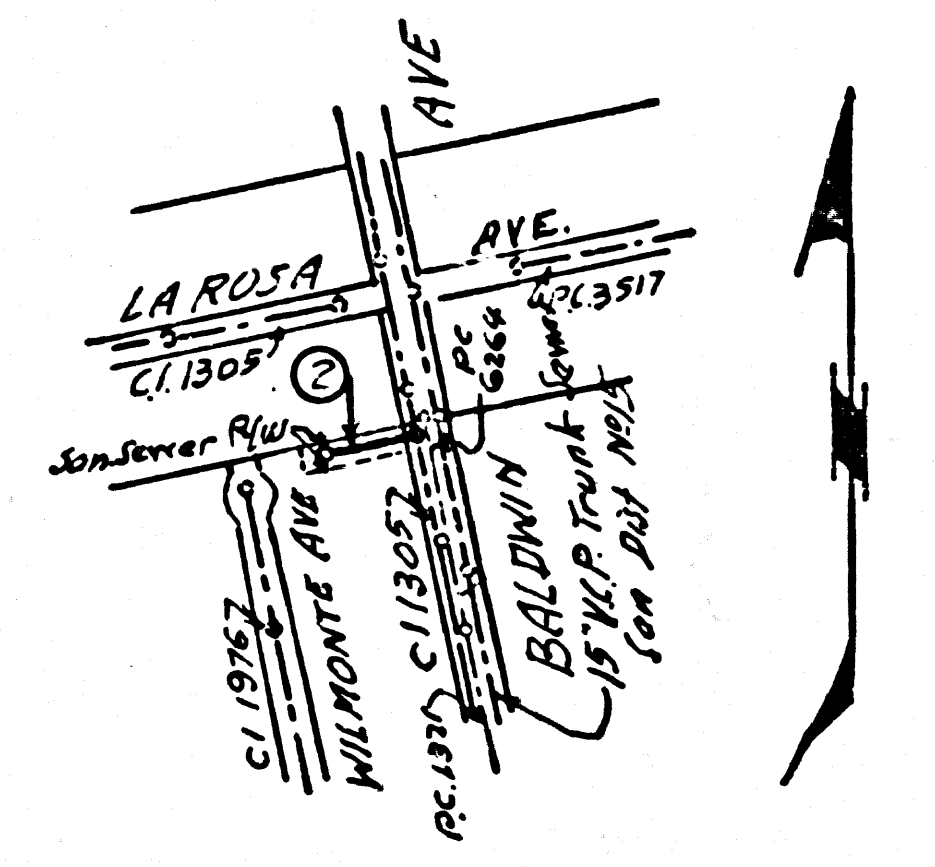
CITY OF TEMPLE CITY, CALIFORNIA

APPROVED, JOHN A. LAMBIE, CITY ENGINEER APPROVED, J. B. PHILLIPS, CHIEF ENGINEER
DIST. SAN. DIST. NO. 12

By: Chas. N. Bell ATTY. SANITATION ENGINEER By: J. B. Phillips OFFICE ENGINEER

CHECKED BY: St. W. Duda 1-12-63
OFFICE OF CITY ENGINEER, REG. C. E. NO. 3104

Submitted: N. F. Bravender
San Gabriel Valley Regional Engineer.

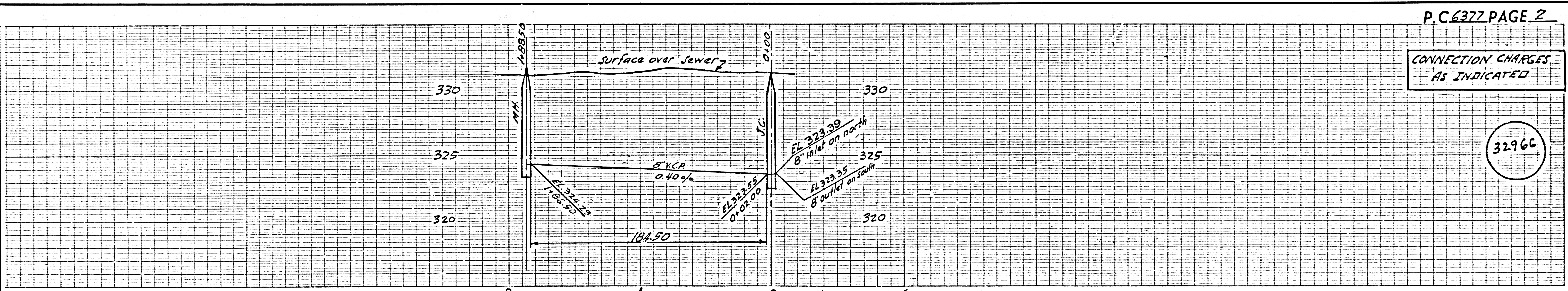


INDEX MAP
Scale 1"=600'
P.C. 6377
R/W West side of Baldwin Ave.
⊙ Indicates Page Numbers.

CONNECTION CHARGES
AS INDICATED
R. Pearce 12/14/62

- NOTES:
1. PROVIDE STAKES ON THE PROPERTY LINE OR PROPERTY LINES PRODUCED AT RIGHT ANGLES TO THE SEWER LINE AT THE CENTER LINE OF EACH MANHOLE.
 2. NO REPRESENTATIVE OF THE CITY ENGINEER WILL SURVEY OR LAY OUT ANY PORTION OF THE WORK.
 3. The private engineer shall furnish the City Engineer with grade sheets and stationing for all house laterals and S branches and shall provide stakes for them of their proper locations with staking plainly marked. All house laterals shall be constructed in a straight alignment at right angles from the main line sewer, except as shown on the plans. House laterals from chimneys shall not have an angle of less than 45° with the main line sewer. Any change in alignment shall be requested in writing by the private engineer.
 4. No revisions shall be made in these plans without the approval of the City Eng.
 5. The contractor shall notify the construction Division by telephone, Madison 9-4747, Ext. 81551, at least twenty-four hours before starting any work under this contract.
 6. Manholes shall be brick sewer structures per S-a-104. Pre cast concrete manholes per S-a-135 or S-a-173 may be used as an alternate in locations approved by the City Engineer.
 7. Use standard manhole frames and covers, S-a-117.
 8. Manhole tops in unimproved rights of way to be six inches above finished grade.
 9. Use extra strength pipe. All pipe is standard depth.
 10. Use cement mortar joints or mechanical compression joints for all V.C.P. in main lines, per specs. sec. 36, 48 and 49.
 11. Whenever ground water is encountered during the construction of the sewers, the V.C.P. joints shall be of joint compound per specs. sec. 33 and 48, or mechanical compression joints per spec. sec. 36.
 12. If a power pole is within three feet of the sewer, the sewer shall be encased per S-a-172, case III, two feet on either side from the point of intersection.
 13. If during the course of construction it is determined that there is less than four feet of cover over the top of a mainline or house lateral V.C.P. sewer which is not indicated on the plans, the pipe shall be encased per S-a-172, Case III, unless otherwise approved by the County Engineer.
 14. Resurface all trenches within paved areas to meet L.A. County Road Dept. or California State Highway requirements, in accordance with permits.
 15. For allowable leakage test use formula No. 1, spec. sec. 54.
 16. All stakes and local trench safety orders will be rigidly enforced.
 17. Standard specifications dated May 25 1962 apply in the construction of this project.

NO CONNECTIONS FOR THE DISPOSAL OF INDUSTRIAL WASTES SHALL BE MADE TO SEWERS SHOWN ON THESE DRAWINGS WITHOUT WRITTEN PERMISSION FROM THE CHIEF ENGINEER AND GENERAL MANAGER OF THE COUNTY SANITATION DISTRICTS.



P.C. 6377 PAGE 2
CONNECTION CHARGES
AS INDICATED

32966

