

B.M. 66.1309 ELEV. 528.571
 L & T. in westerly end of conc. headwall
 2' 10" southerly of Walnut Dr. & 1' 25"
 easterly of Water St. Prod.
 OTTERBEIN QUAD. 1955

PUEENTE BLDG. DIST. NO. 2

PROFILE ALIGNMENT AND GRADE OF
 SANITARY SEWERS PAGE 1

TO BE CONSTRUCTED IN
 TRACT NO. 26340

PRIVATE CONTRACT NO. 6381

W.S. 38
 3 SHEETS; 6 PAGES

SCALE: VERT. 1" = 4'
 HORIZ. 1" = 40' OCTOBER, 1962

PREPARED IN THE OFFICES OF
 ADAMS & ELLS
 CIVIL ENGINEERS
 BY: William C. Sullivan
 REG. C. E. NO. 10880

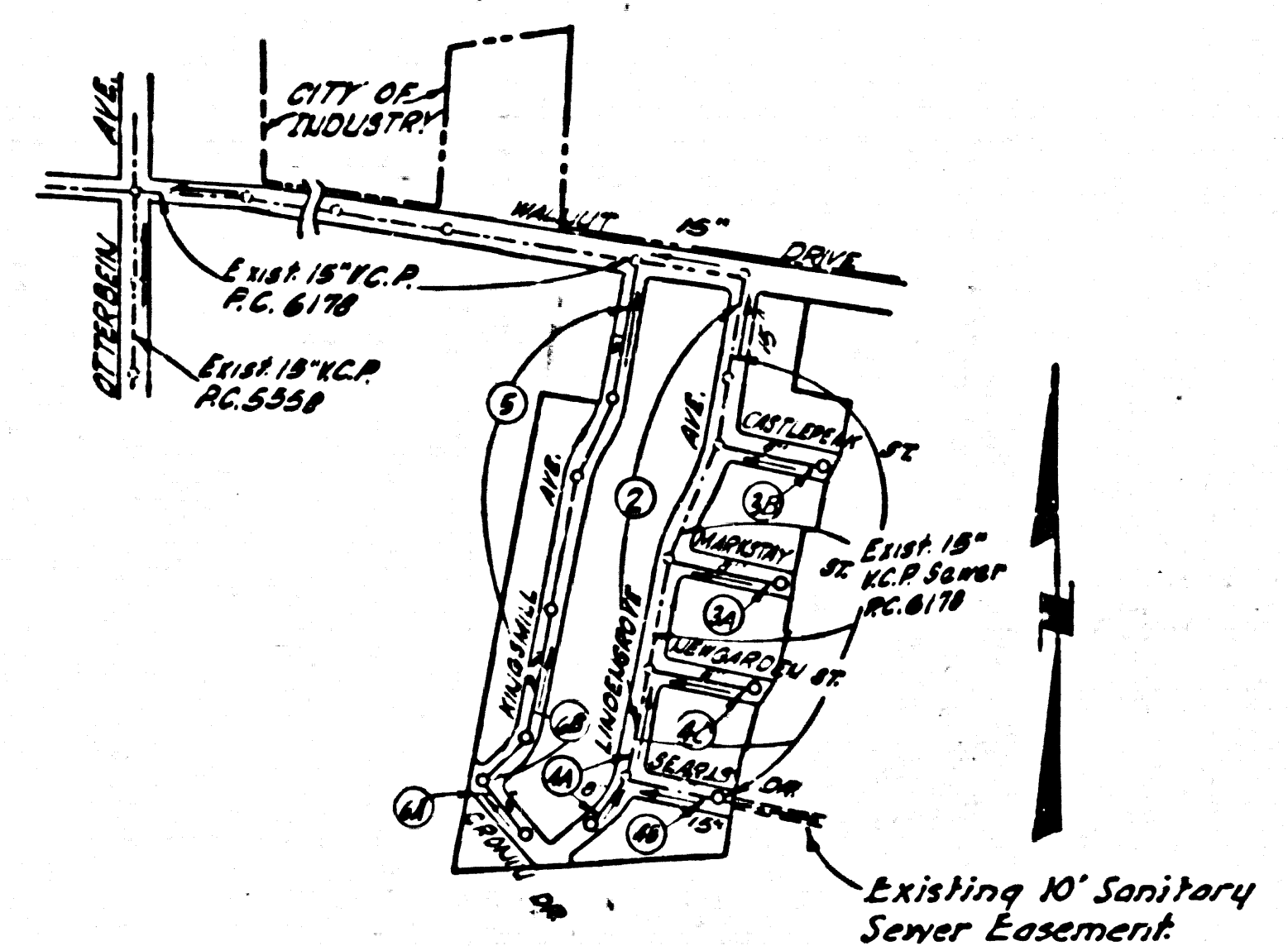
33595

FOR LEGEND SEE PLAN NO. S-6-64

NOTE:
 GRADES TO WHICH THIS IMPROVEMENT IS TO BE CONSTRUCTED ARE SHOWN ON PLANS AND PROFILES. GRADE POINTS FOR TOP OF CURBS, CENTER LINE OF STREETS, OR CENTER LINE OF ALLEYS ARE SHOWN BY CIRCLES ON PROFILES. AT ALL POINTS BETWEEN DESIGNATED POINTS THE GRADE SHALL BE ESTABLISHED SO AS TO CONFORM TO A STRAIGHT LINE DRAWN BETWEEN SAID DESIGNATED POINTS.
 ELEVATIONS ARE IN FEET ABOVE U.S.C. & G.S. SEA LEVEL DATUM OF 1929.
 THIS DRAWING AND THE DATA HEREON ARE HEREBY MADE A PART OF THE SPECIFICATIONS.
 WORK SHALL BE CONSTRUCTED ACCORDING TO STANDARD SPECIFICATIONS DATED ANY FEEL, 1958, ON FILE IN THE OFFICE OF THE COUNTY ENGINEER AND SHALL BE PROSECUTED ONLY IN THE PRESENCE OF THE COUNTY ENGINEER.
 BEFORE WORK CAN BE STARTED, THE CONTRACTOR MUST OBTAIN A PERMIT TO OCCUPY THE COUNTY STREETS FROM THE L.A. COUNTY ROAD DEPT., DISTRICT OFFICE NO. 1, AND PAY A FEE TO THE COUNTY ENGINEER, ROOM 380, COUNTY ENGINEERING BUILDING, 700 WEST SECOND STREET, LOS ANGELES, CALIFORNIA.
 APPROVAL OF THIS PLAN BY THE COUNTY OF LOS ANGELES DOES NOT CONSTITUTE A REPRESENTATION AS TO THE ACCURACY OF THE LOCATION OR OF THE EXISTENCE OR NON-EXISTENCE OF ANY UNDERGROUND UTILITY PIPES OR STRUCTURE WITHIN THE LIMITS OF THE PROJECT. THIS NOTE APPLIES TO ALL PAGES.
 IF WORK IS TO BE DONE IN A STATE HIGHWAY, A PERMIT MUST BE OBTAINED FROM THE STATE OF CALIFORNIA, DIVISION OF HIGHWAYS, 120 SOUTH SPRING STREET, LOS ANGELES, CALIFORNIA.

COUNTY OF LOS ANGELES, CALIFORNIA
 JOHN A. LAMBIE, COUNTY ENGINEER J. D. PARKHURST, CHIEF ENGINEER
 CO. SANITARY NO. 10880
 APPROVED BY: [Signature] ASSISTANT SANITARY ENGINEER APPROVED BY: [Signature] OFFICE ENGINEER
 SUBMITTED BY: [Signature] REGIONAL ENGINEER
 SAN DIMAS REGIONAL OFFICE
 CHECKED BY: [Signature] REG. C. E. NO. 2940

J.N. 0359.21



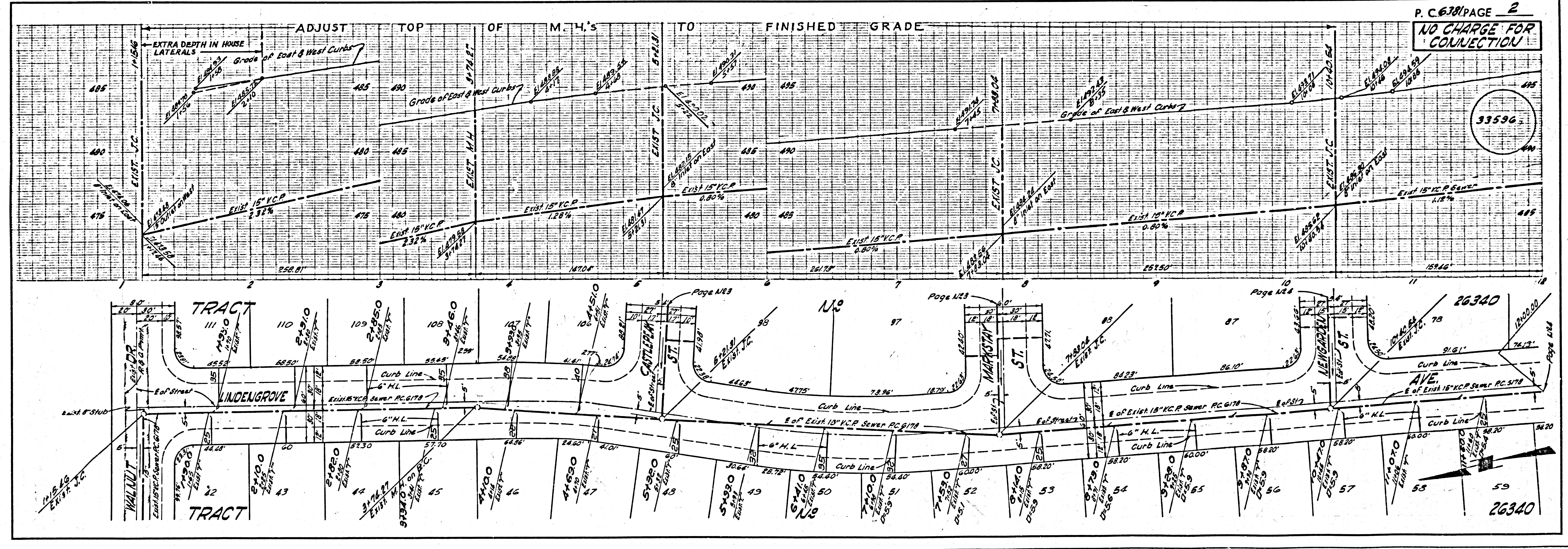
INDEX MAP
 TRACT NO. 26340
 P.C. 6381
 SCALE: 1" = 800'

REVISION
 1. Lowered curb & sewer grades pages 5 & 6 B.
 2. Raised sewer grade approx. 0.20 page 6A
 BY: [Signature] REN. 11636
 SAN DIMAS REGIONAL OFFICE 4-18-63

ISSUE NO HOUSE LATERAL PERMITS UNTIL P. C. 6178 IS ACCEPTED

COLLECT CHARGES AS INDICATED
 Club A Permit 12-21-62

NO CONNECTIONS FOR THE DISPOSAL OF INDUSTRIAL WASTES SHALL BE MADE TO SEWERS SHOWN ON THESE DRAWINGS WITHOUT WRITTEN PERMISSION FROM THE CHIEF ENGINEER AND GENERAL MANAGER OF THE COUNTY SANITATION DISTRICT.

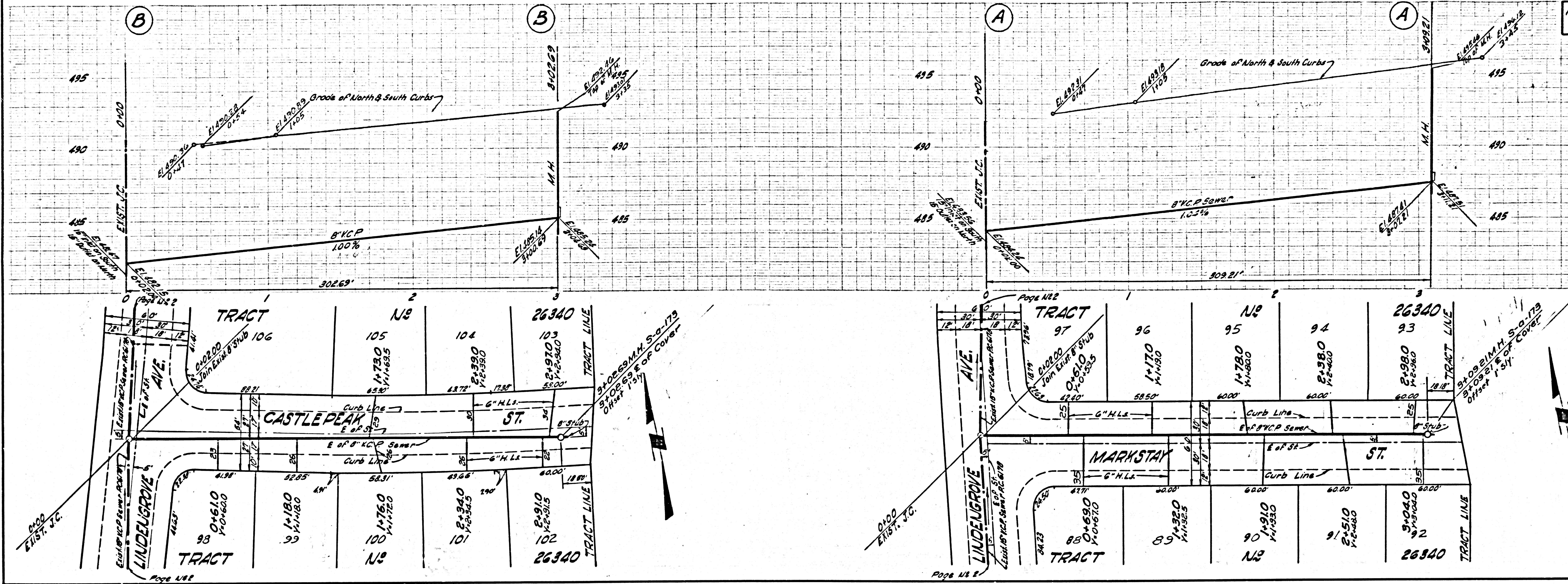


P. C. 6381 PAGE 2
 NO CHARGE FOR CONNECTION

33596

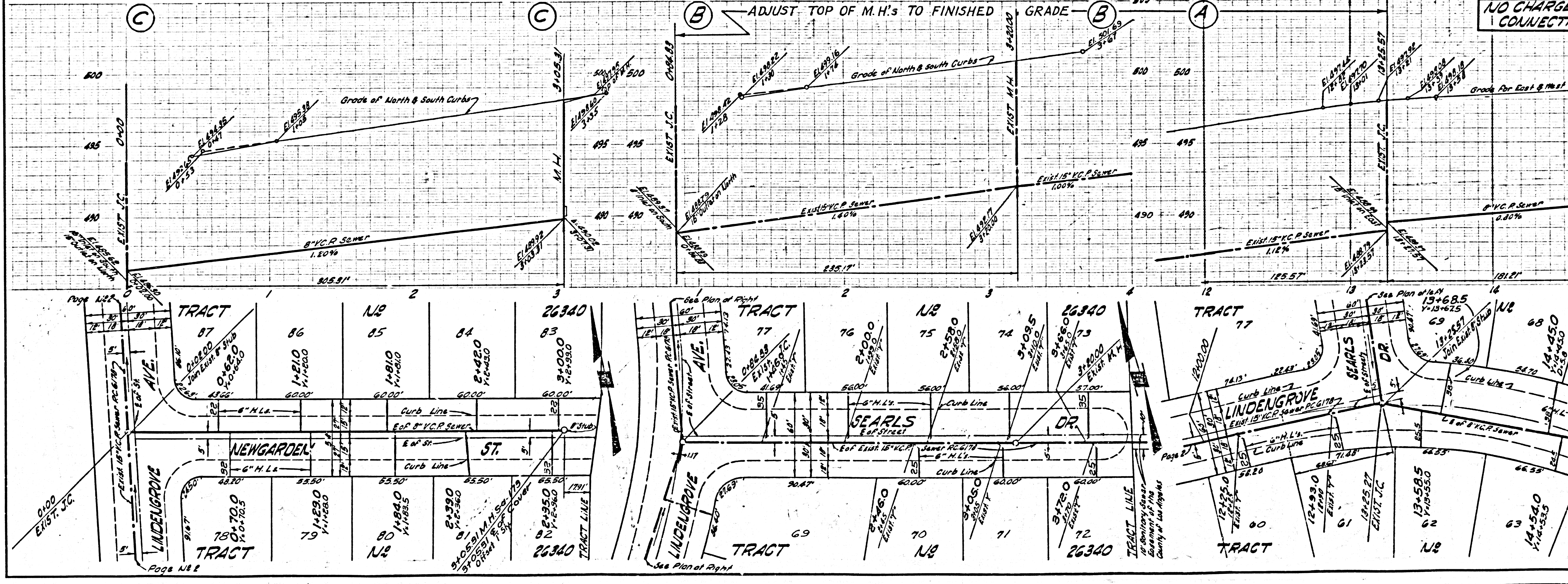
NO CHARGE FOR CONNECTION

33597

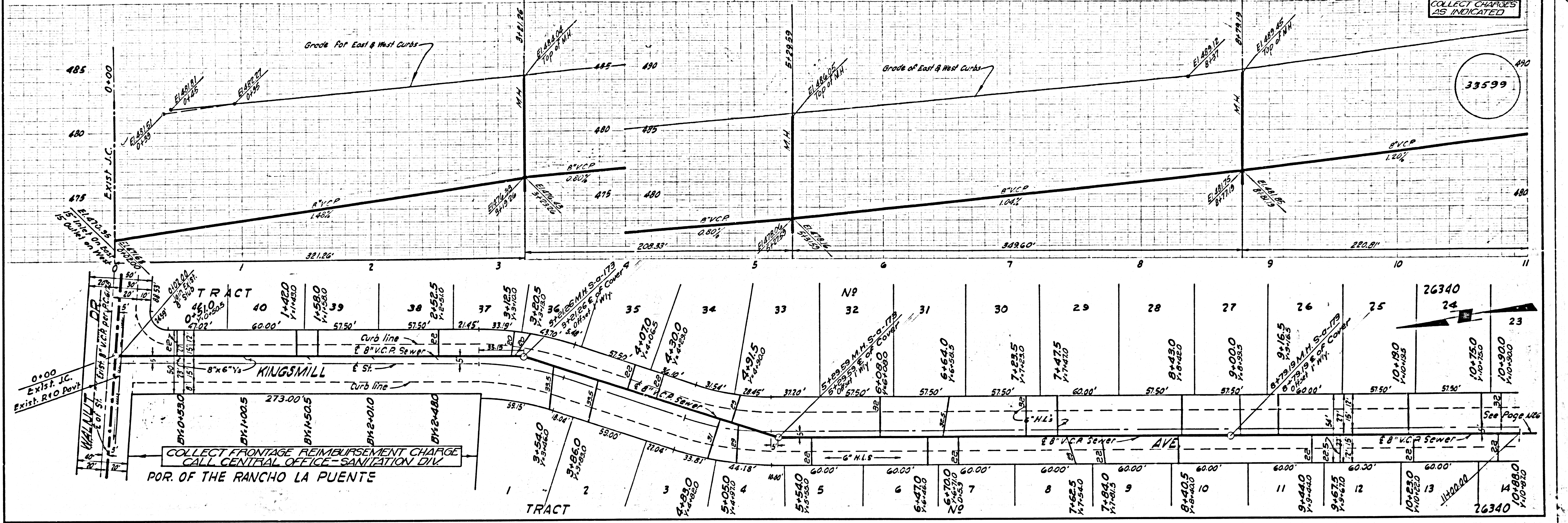


NO CHARGE FOR CONNECTION

33598



COLLECT CHARGES AS INDICATED



NO CHARGE FOR COLLECTION

