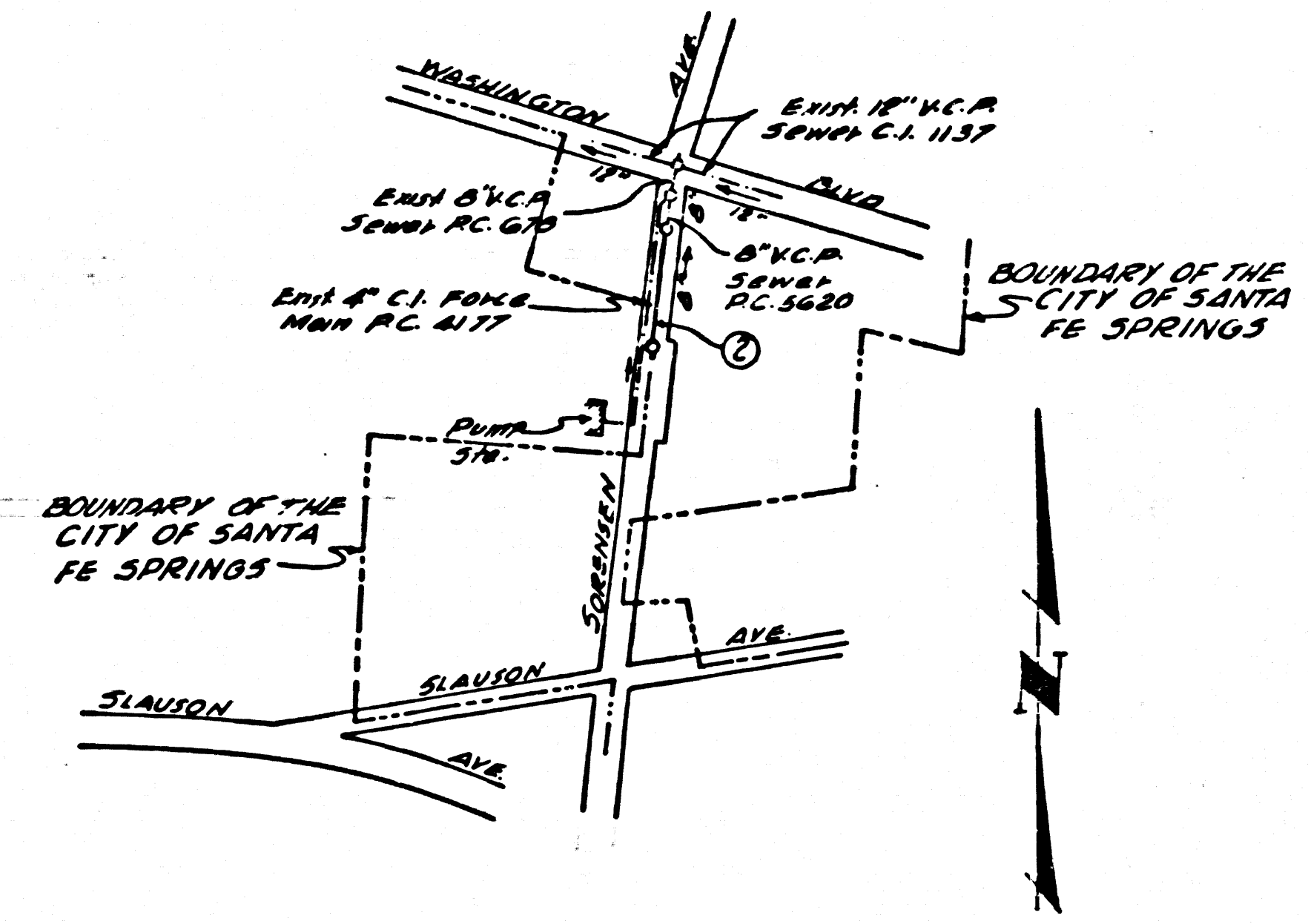


B.M. 5Y 3710 ELEV. 153.067  
 SET 4" B NAIL IN 3/16 CONC. VALVE  
 BOX NEAR E. 12' OF BUILDING  
 \*11655 E 40' N. Q. WASHINGTON BLDG.  
 SANTA FE QUAD. 19 55



**INDEX MAP**  
 P.C. 6382  
 SCALE: 1" = 600'  
 U.N. 0359.22

**WHITTIER BLDG. DIST. NO. 11**  
**SANTA FE SPRINGS BLDG. DIST. NO. 4.05**

PROFILE ALIGNMENT AND GRADE OF P.C. 6382  
**SANITARY SEWERS PAGE 1**  
 TO BE CONSTRUCTED IN

**SORENSEN AVENUE**  
**PRIVATE CONTRACT NO. 6382**

W.S. 37  
 1 SHEET, 2 PAGES  
 SCALE: VERT. 1" = 4' HORIZ. 1" = 40' **OCTOBER 1962**  
 PREPARED IN THE OFFICES OF  
**KEMMERER ENGR. CO. INC.**  
 WHITTIER, CALIF.  
 BY: **Robert R. Flores**  
 REG. C. E. NO. 11349

32918

**NOTE:**  
 The Existence and Approximate Location of Underground Utilities or Structures Shown on These Plans Were Determined By A Search of the Available Public Records. To The Best of Our Knowledge There Are No Existing Underground Utilities or Structures Except as Shown on This Map.  
 The Contractor is Required to Take Due Precautionary Measures to Protect the Utilities or Structures Shown and Any Other Utilities or Structures at the Site. It Shall Be the Contractor's Responsibility to Notify the Owners of the Utilities or Structures Concerned Before Starting Work.

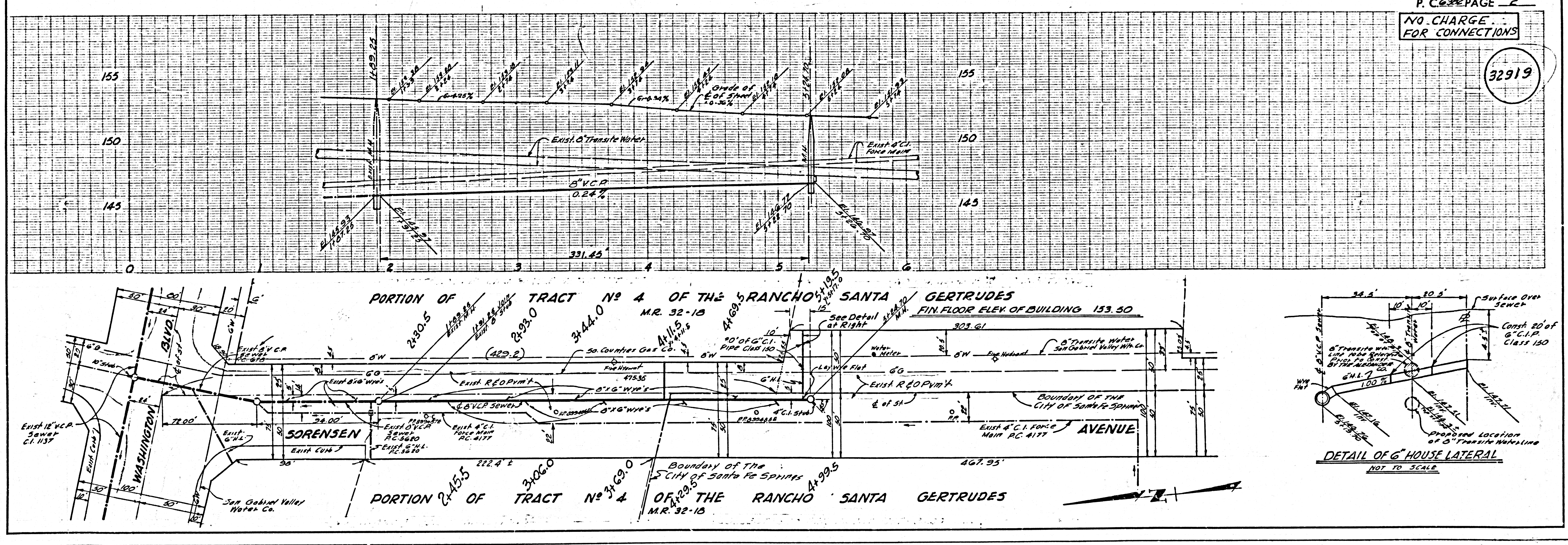
- NOTES:**
1. PROVIDE STAKES ON THE PROPERTY LINE OR PROPERTY LINES PRODUCED AT RIGHT ANGLES TO THE SEWER LINE AT THE CENTER LINE OF EACH MANHOLE.
  2. NO REPRESENTATIVE OF THE COUNTY ENGINEER WILL SURVEY OR LAY OUT ANY PORTION OF THE WORK.
  3. THE PRIVATE ENGINEER SHALL FURNISH THE COUNTY ENGINEER WITH GRADE SHEETS AND STATIONING FOR ALL HOUSE LATERALS AND Y BRANCHES AND SHALL PROVIDE STAKES FOR THEM AT THEIR PROPER LOCATIONS WITH STATIONING PLAINLY MARKED. ALL HOUSE LATERALS SHALL BE CONSTRUCTED IN A STRAIGHT ALIGNMENT AT RIGHT ANGLES TO THE MAIN LINE SEWER EXCEPT AS SHOWN ON THE PLANS. HOUSE LATERALS FROM CHIMNEYS SHALL NOT HAVE AN ANGLE OF LESS THAN 45° WITH THE MAIN LINE SEWER. ANY CHANGE IN ALIGNMENT SHALL BE REQUESTED IN WRITING BY THE PRIVATE ENGINEER.
  4. THE PRIVATE ENGINEER SHALL FURNISH THE HOUSE LATERAL DEPTH AT THE PROPERTY LINE BELOW THE TOP OF CURB ELEVATION FOR EACH HOUSE LATERAL ON THE GRADE SHEET.
  5. NO REVISIONS SHALL BE MADE IN THESE PLANS WITHOUT THE APPROVAL OF THE COUNTY ENGINEER.
  6. THE CONTRACTOR SHALL NOTIFY THE CONSTRUCTION DIVISION BY TELEPHONE, MADISON 9-4747, EXT. 81531, AT LEAST TWENTY-FOUR HOURS BEFORE STARTING ANY WORK UNDER THIS CONTRACT.
  7. MANHOLES SHALL BE BRICK SEWER STRUCTURES PER S-1-104. PRECAST CONCRETE MANHOLES PER S-1-135 OR S-1-173 MAY BE USED AS AN ALTERNATE IN LOCATIONS APPROVED BY THE COUNTY ENGINEER.
  8. USE STANDARD MANHOLE FRAMES AND COVERS, S-1-107.
  9. MANHOLE TOPS IN UNIMPROVED RIGHTS-OF-WAY TO BE SIX INCHES ABOVE FINISHED GRADE.
  10. USE EXTRA STRENGTH PIPE. ALL PIPE IS STANDARD DEPTH EXCEPT AS NOTED.
  11. USE CEMENT MORTAR OR MECHANICAL COMPRESSION JOINTS FOR ALL V.C.P. JOINTS PER SPECS. SECS. 36 & 48.
  12. WHERE EVER GROUND WATER IS ENCOUNTERED DURING THE CONSTRUCTION OF THE SEWERS, THE V.C.P. JOINTS SHALL BE OF JOINT COMPOUND PER SPECS. SECS. 33 & 48, OR MECHANICAL COMPRESSION JOINTS PER SPECS. SEC. 36.
  13. IF A POWER POLE IS WITHIN THREE FEET OF THE SEWER, THE SEWER SHALL BE ENCASED, PER S-1-173, CASE III, TWO FEET ON EITHER SIDE FROM THE POINT OF INTERFERENCE.
  14. IF DURING THE COURSE OF CONSTRUCTION IT IS DETERMINED THAT THERE IS LESS THAN FOUR FEET OF COVER OVER THE TOP OF A MAIN LINE OR HOUSE LATERAL V.C.P. SEWER WHICH IS NOT INDICATED ON THE PLANS, THE PIPE SHALL BE ENCASED PER S-1-173, CASE III, UNLESS OTHERWISE APPROVED BY THE COUNTY ENGINEER.
  15. RESURFACE ALL TRENCHES WITHIN PAVED AREAS TO MEET L.A. COUNTY ROAD DEPT. OR CALIFORNIA STATE HIGHWAY REQUIREMENTS IN ACCORDANCE WITH PERMITS.
  16. FOR ALLOWABLE LEAKAGE TEST USE FORMULA NO. 1, SPECS. SEC. 54.
  17. USE MECHANICAL COMPRESSION JOINTS FOR ALL KLR HOUSE LATERALS PER SPECS. SEC. 36 & 49.
  18. ALL STATE AND LOCAL TRENCH SAFETY ORDERS WILL BE RIGIDLY ENFORCED.
  19. ALL CONSTRUCTION WITHIN THE CITY OF SANTA FE SPRINGS SHALL CONFORM TO THE SPECS. & STANDARDS ON FILE IN THE OFFICE OF THE DIRECTOR OF PUBLIC WORKS OF THE CITY OF SANTA FE SPRINGS.

**NOTE:**  
 GRADES TO WHICH THIS IMPROVEMENT IS TO BE CONSTRUCTED ARE SHOWN ON PLANS AND PROFILES. GRADE POINTS FOR TOP OF CURBS, CENTER LINE OF STREETS, OR CENTER LINE OF ALLEYS ARE SHOWN BY CIRCLES ON PROFILES. AT ALL POINTS BETWEEN DESIGNATED POINTS THE GRADE SHALL BE ESTABLISHED SO AS TO CONFORM TO A STRAIGHT LINE DRAWN BETWEEN SAID DESIGNATED POINTS. ELEVATIONS ARE IN FEET ABOVE U.S.C. & G.S. SEA LEVEL DATUM OF 1929.  
 THIS DRAWING AND THE DATA HEREON ARE HEREBY MADE A PART OF THE SPECIFICATIONS.  
 WORK SHALL BE CONSTRUCTED ACCORDING TO STANDARD SPECIFICATIONS DATED MAY 22, 1962, ON FILE IN THE OFFICE OF THE COUNTY ENGINEER AND SHALL BE PROSECUTED ONLY IN THE PRESENCE OF THE COUNTY ENGINEER.  
 BEFORE WORK CAN BE STARTED, THE CONTRACTOR MUST OBTAIN A PERMIT TO EXCAVATE IN COUNTY STREETS FROM THE L.A. COUNTY ROAD DEPT., DISTRICT OFFICE NO. 4, AND PAY A FEE TO THE COUNTY ENGINEER, ROOM 330, COUNTY ENGINEERING BUILDING, 100 WEST SECOND STREET OR THE L.A. COUNTY REGIONAL OFFICE, SUFFICIENT TO COVER THE COST OF CONSTRUCTION INSPECTION AND RECORD PLANS.  
 APPROVAL OF THIS PLAN BY THE COUNTY OF LOS ANGELES DOES NOT CONSTITUTE A REPRESENTATION AS TO THE ACCURACY OF THE LOCATION OF OR THE EXISTENCE OR NON-EXISTENCE OF ANY UNDERGROUND UTILITY PIPE, OR STRUCTURE WITHIN THE LIMITS OF THIS PROJECT. THIS NOTE APPLIES TO ALL PAGES.  
 IF WORK IS TO BE DONE IN A STATE HIGHWAY, A PERMIT MUST BE OBTAINED FROM THE STATE OF CALIFORNIA, DIVISION OF HIGHWAY, 120 SOUTH SPRING STREET, LOS ANGELES, CALIFORNIA.

COUNTY OF LOS ANGELES, CALIFORNIA  
 JOHN A. LAMBIE, COUNTY ENGINEER J. D. PARKHURST, CHIEF ENGINEER  
 CO. SAN. DIST. NO. 18  
 APPROVED BY: **John A. Lambie** SANITATION ENGINEER APPROVED BY: **J. D. Parkhurst** OFFICE ENGINEER  
 SUBMITTED BY: **Robert R. Flores** 11-29-62  
 105 CANTON REGIONAL ENGINEER, R.E.O. C.E.N. 3887  
 CHECKED BY: **John A. Lambie** 12-5-62  
 REG. C.E. NO. 3484  
 APPROVED BY: **Ellen Edmundo** 12-3-62  
 CITY OF SANTA FE SPRINGS  
 City Engineer J.N. 0359.22

**COLLECT CHARGES AS INDICATED**  
 D.M. Hopkins 11-29-62

NO CONNECTIONS FOR THE DISPOSAL OF INDUSTRIAL WASTES SHALL BE MADE TO SEWERS SHOWN ON THESE DRAWINGS WITHOUT WRITTEN PERMISSION FROM THE CHIEF ENGINEER AND GENERAL MANAGER OF THE COUNTY SANITATION DISTRICTS.



P.C. 6382 PAGE 2  
**NO CHARGE FOR CONNECTIONS**

32919

