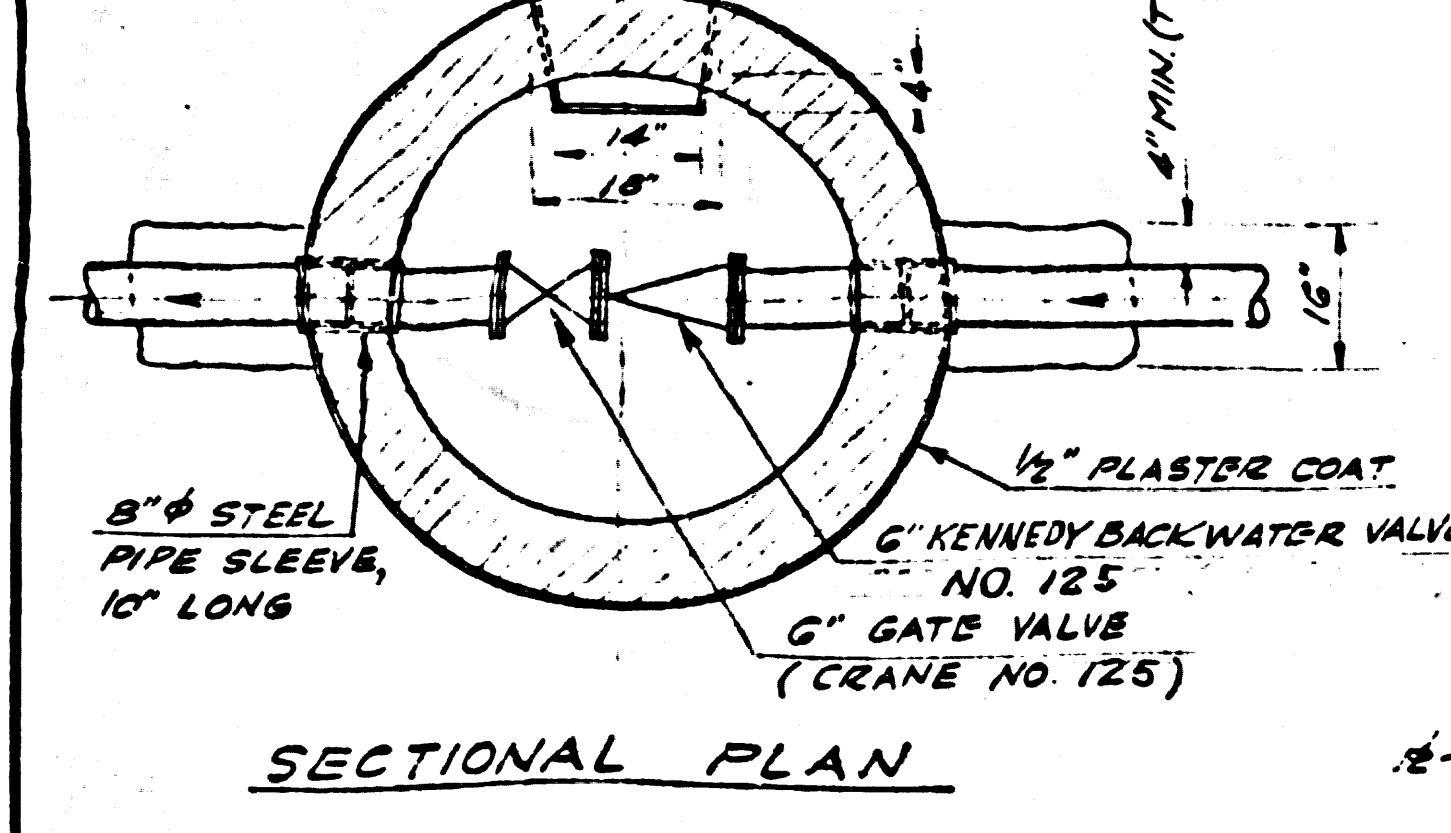
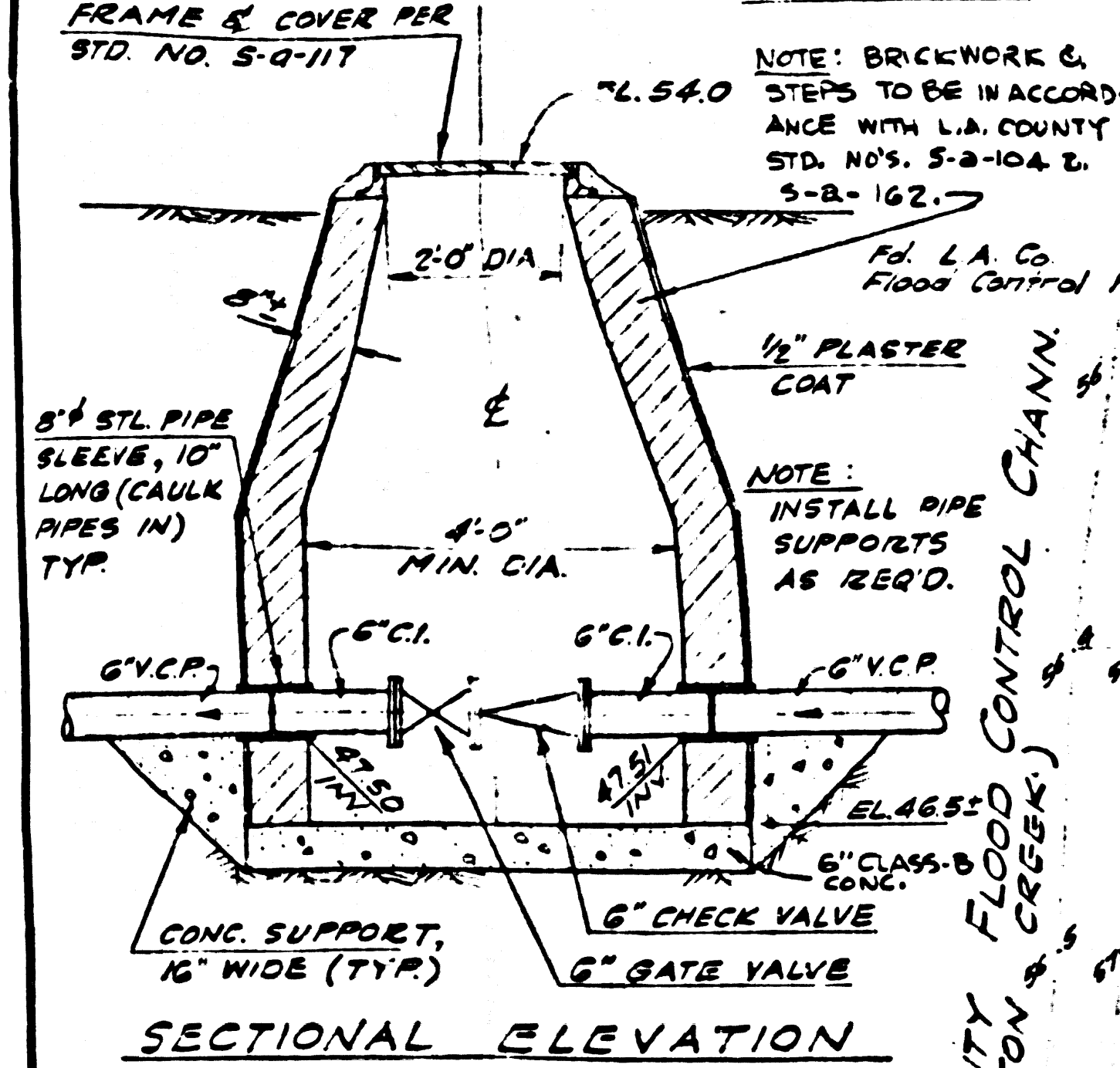


33172

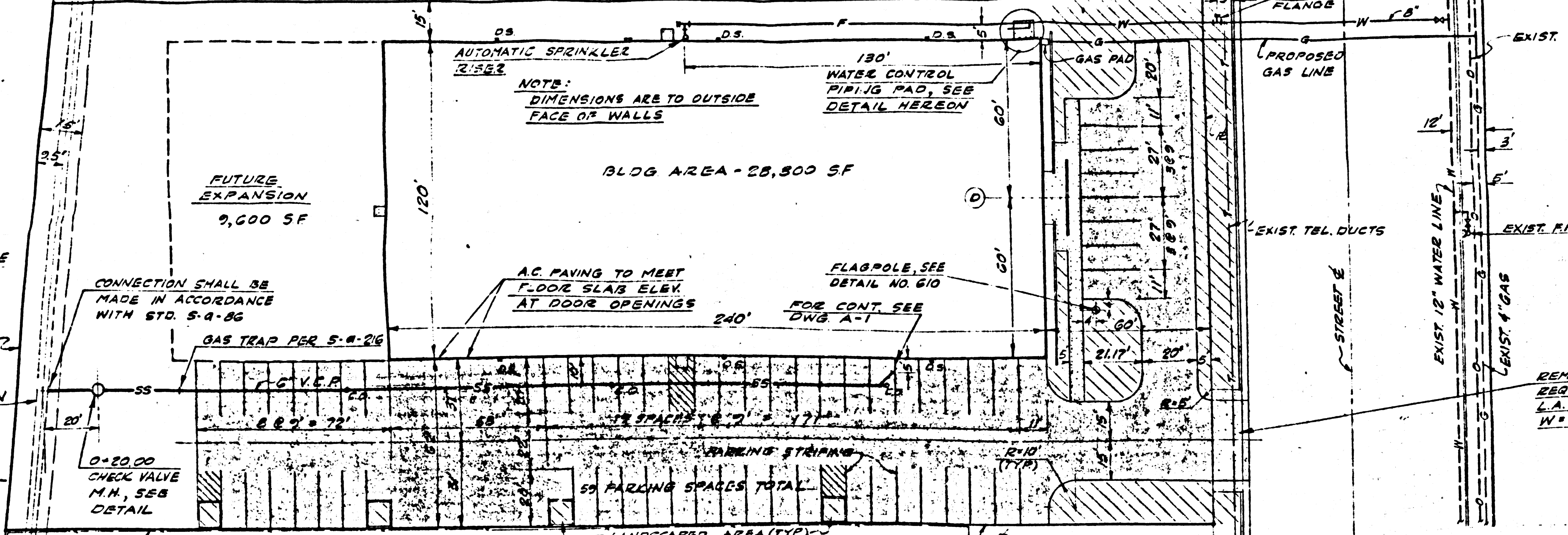
NOTE: BRICKWORK & STEPS TO BE IN ACCORDANCE WITH L.A. CO. STD. NOS. S-9-104 & S-9-102.



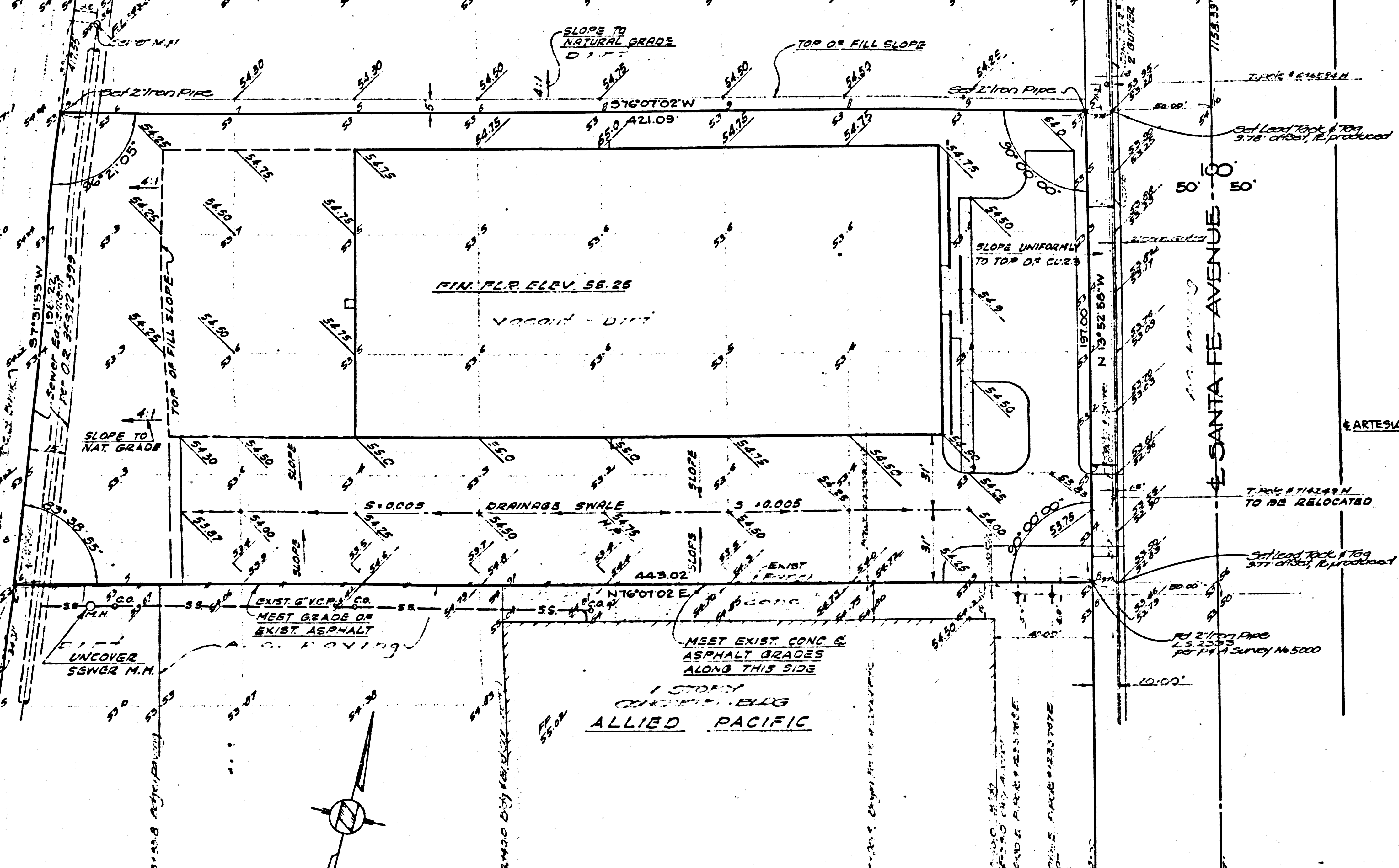
SECTIONAL PLAN



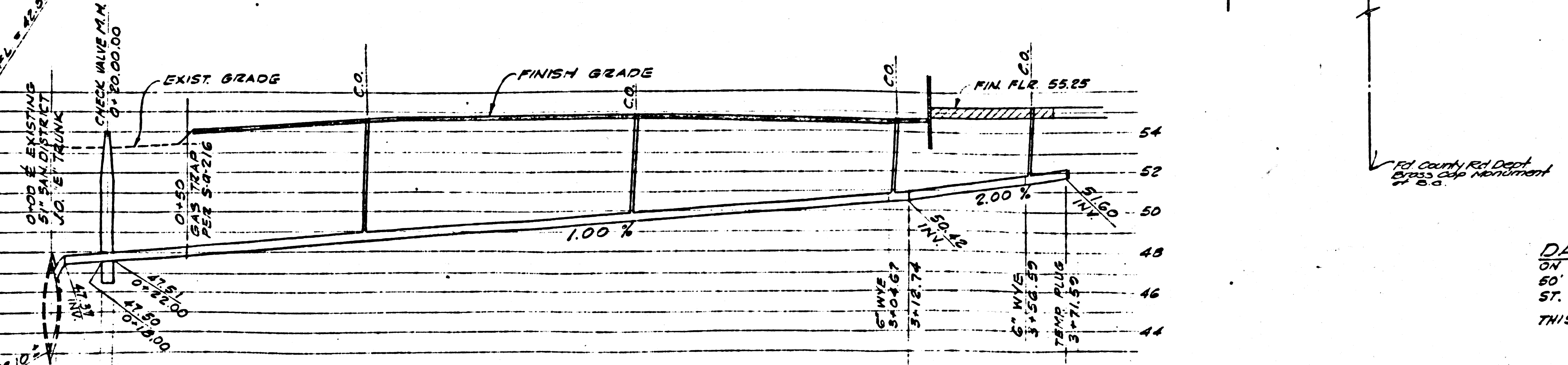
CHECK VALVE MANHOLE DETAILS  
SCALE: 1/2" = 1'-0"



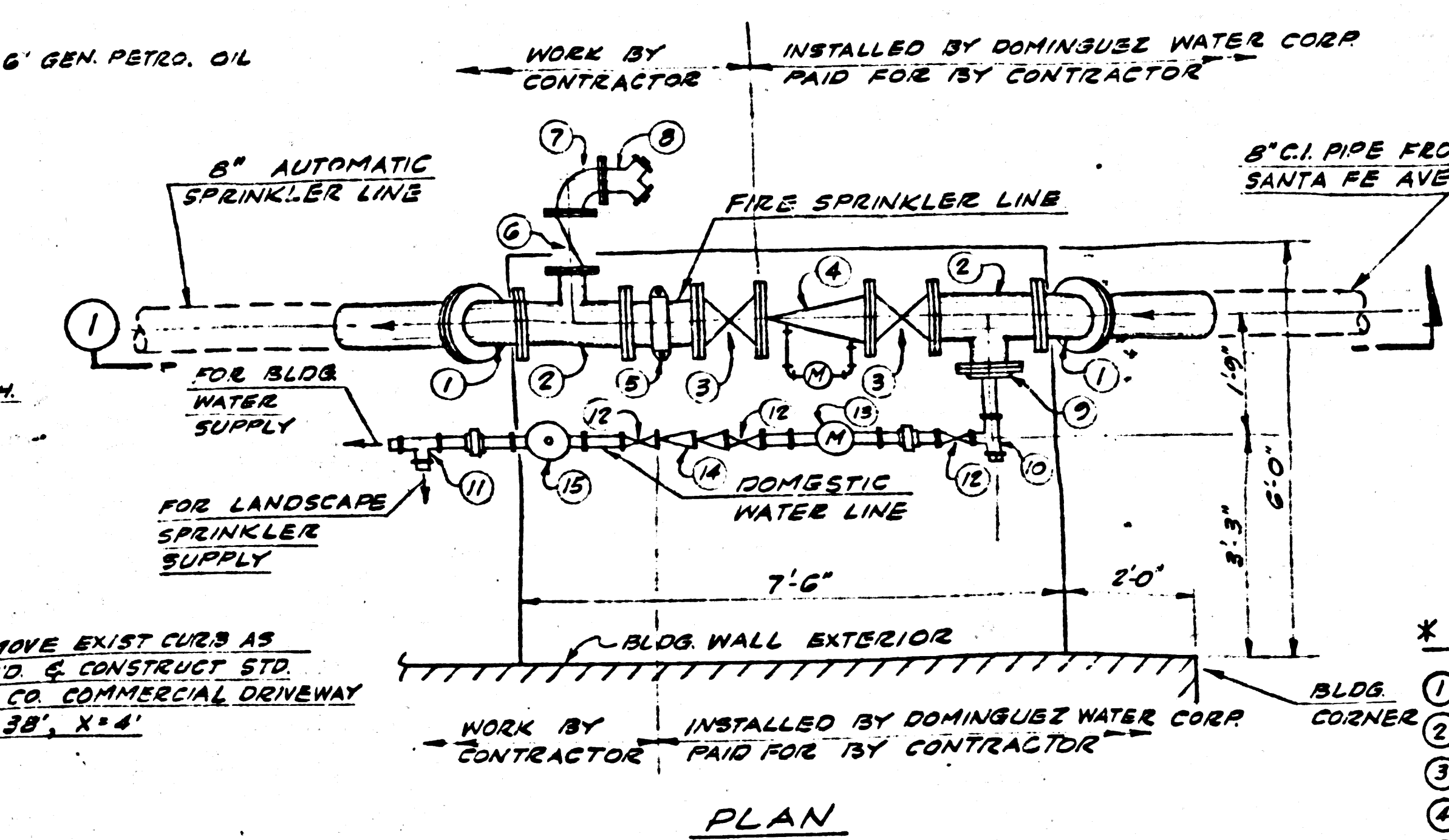
PAVING, LANDSCAPING & UTILITY PLAN



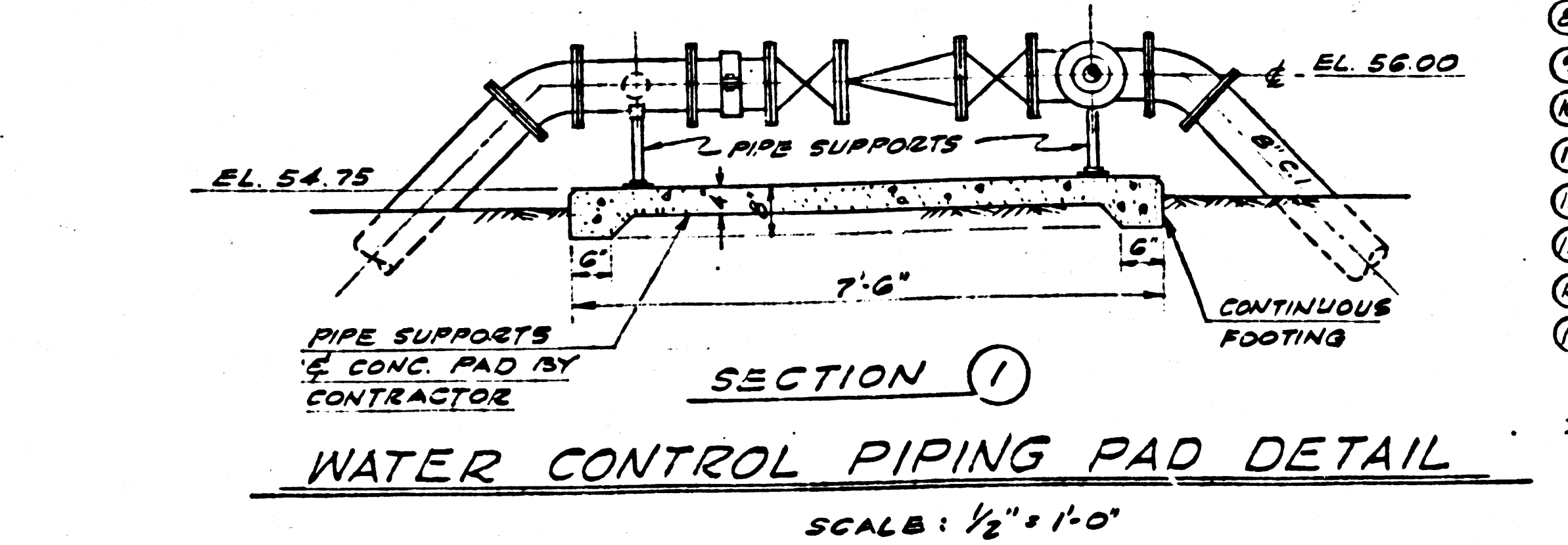
GRADING PLAN  
SCALE: 1" = 30'



SANITARY SEWER PROFILE  
SCALE: HORIZ. 1" = 30'  
SCALE: VERT. 1" = 4'



PLAN



SECTION 1  
WATER CONTROL PIPING PAD DETAIL  
SCALE: 1/2" = 1'-0"

- LEGEND**
- EXISTING GRADE ELEVATION
  - FINISH GRADE ELEVATION
  - PREMIUM PAVEMENT
  - AREA TO BE LANDSCAPED
  - CONCRETE WALK OR PAD
  - EXIST. WATER LINE
  - PROPOSED WATER LINE
  - EXIST. GAS LINE
  - PROPOSED GAS LINE
  - EXIST. SANITARY SEWER
  - PROPOSED SANITARY SEWER
  - EXIST. OIL LINE

PRIVATE CONTRACT No. 6384  
LENNOX BLDG. DIST. No. 7  
W. 32-A2  
SHEETS 1.....  
J.N. 0359.23

Notes:  
Elevations are in feet above U.S.C. & G.S. Sea Level Datum of 1929.  
This Drawing and the data hereon are hereby made a part of the specifications.  
Work shall be constructed according to specifications on file in the office of the County Engineer and shall be prosecuted only in the presence of the County Engineer.

Before work can be started, the contractor must obtain a permit to cover construction inspection and record plans from the County Engineer, Room 310, 105 West 2<sup>nd</sup> St.

Approval of this plan by the County of Los Angeles does not constitute a representation as to the Accuracy of the location of, or the existence or non-existence of, any underground utility, pipe, or structure within the limits of this project.

Notes:  
No representative of the County Engineer will survey or layout any portion of the work.  
No revisions shall be made in these plans without approval of the County Engineer.

1. Use standard strength pipe, except as noted.
2. Use cement mortar for all vitrified clay pipe joints.
3. Excavate all trench within paved area to meet Los Angeles County Standard Specifications for Trenching and Shoring.
4. Encase four feet of sewer at points of interference with poles as per S-119.
5. All structures shall be built in accordance with S-104, except as noted.

**DATUM** - ALL ELEVATIONS SHOWN HEREON ARE BASED ON LOS ANGELES COUNTY ROAD DEPT. B.M. (37365) LOCATED 60' WEST OF SANTA FE AVENUE, AT M.C. JUST SOUTH OF VICTORIA ST. B.M. ELEV. = 48.766  
THIS SURVEY COINCIDES WITH P.E.A. SURVEY NO. 5000

NOTE:  
THE CONTRACTOR SHALL NOTIFY THE CONSTRUCTION AND STORM DRAIN DIVISION BY TELEPHONE, AND MAIL, AT LEAST 24 HOURS BEFORE THE START OF ANY WORK UNDER THIS CONTRACT.

- \* EQUIPMENT IDENTITY**
- 1 8" - 45° ELBOW
  - 2 8" - 8" x 4" TEE
  - 3 8" GATE VALVE
  - 4 8" DETECTOR CHECK VALVE
  - 5 VICTAULIC COUPLING
  - 6 4" CHECK VALVE
  - 7 4" - 90° ELBOW
  - 8 4" SIAMMESH HOSE CONN.
  - 9 4" x 2" REDUCING FLANGE
  - 10 2" TEE (1 OUTLET PLUGGED)
  - 11 2" TEE (2 OUTLETS PLUGGED)
  - 12 2" GATE VALVE
  - 13 2" METER
  - 14 2" BACKFLOW PREVENTER
  - 15 2" PRESSURE REDUCING VALVE (CLAYVAL #90)
- \* PIPS & FITTINGS SHALL BE CLASS 150

- NOTES:**
1. GRADE UNIFORMLY BETWEEN CONTROL ELEVATIONS INDICATED.
  2. ALL PAVEMENT SHALL BE 3 INCHES OF PREMIX ON 6 INCHES OF COMPACTED SUBGRADE.
  3. PROVIDE MIN. COVER OF 30 INCHES OVER WATER LINES.
  4. PAVING SHALL BE BORDERED WITH A CONTINUOUS 1 1/2" REDWOOD BOARD AND 2" x 2" REDWOOD STAKES @ 4'-0" O.C. WHERE IT ADJ. TO EARTH.
  5. ENTIRE SITE TO BE CLEARED AND GRUBBED.
  6. ALL WORK IN SANTA FE AVENUE SHALL BE IN ACCORDANCE WITH L.A. COUNTY ROAD DEPT. REQUIREMENTS.
  7. BEFORE BREAKING INTO L.A. COUNTY SANITATION DISTRICT TRUNK SEWER, NOTIFY SANITATION DISTRICT WORK SHALL BE DONE ONLY IN THE PRESENCE OF THEIR REPRESENTATIVE.

**PRIVATE SEWER**  
COUNTY OF LOS ANGELES, CALIFORNIA  
APPROVED, JOHN A. LAMBE, County Engineer  
By *[Signature]*  
Chief Sanitation Engineer  
APPROVED, *[Signature]*  
Office Engineer  
Checked, *[Signature]*  
City of County Engineer Reg. C.E. No. 2400  
APPROVED, *[Signature]* 11/19/62  
INDUSTRIAL WASTE DIVISION  
THE ABOVE APPROVAL OF PRIVATE CONTRACT NO. 6384 PERTAINS ONLY TO THE 6" SEWER AND MANHOLE BETWEEN STATION 0+00 AND STATION 0+22.00.

NO CONNECTIONS FOR THE DISPOSAL OF INDUSTRIAL WASTES SHALL BE MADE TO SEWERS SHOWN ON THESE DRAWINGS WITHOUT WRITTEN PERMISSION FROM THE CHIEF ENGINEER AND GENERAL MANAGER OF THE COUNTY SANITATION DISTRICTS.

ALL STATE AND LOCAL TRENCH SAFETY ORDERS WILL BE RIGIDLY ENFORCED.

**QUINTON ENGINEERS, LTD.**  
planning • engineering • architecture  
Los Angeles, California

CARSON ESTATE COMPANY  
RANCHO SAN PEDRO

INDUSTRIAL BUILDING  
PLOT PLAN, GRADING PLAN  
& DETAILS

DESIGNED LONNER	APPROVED <i>[Signature]</i>	JOB NO. 62365
DRAWN LONNER	DATE 12/2/62	SHEET NO. C-1
CHECKED HUBB		REV. NO.