

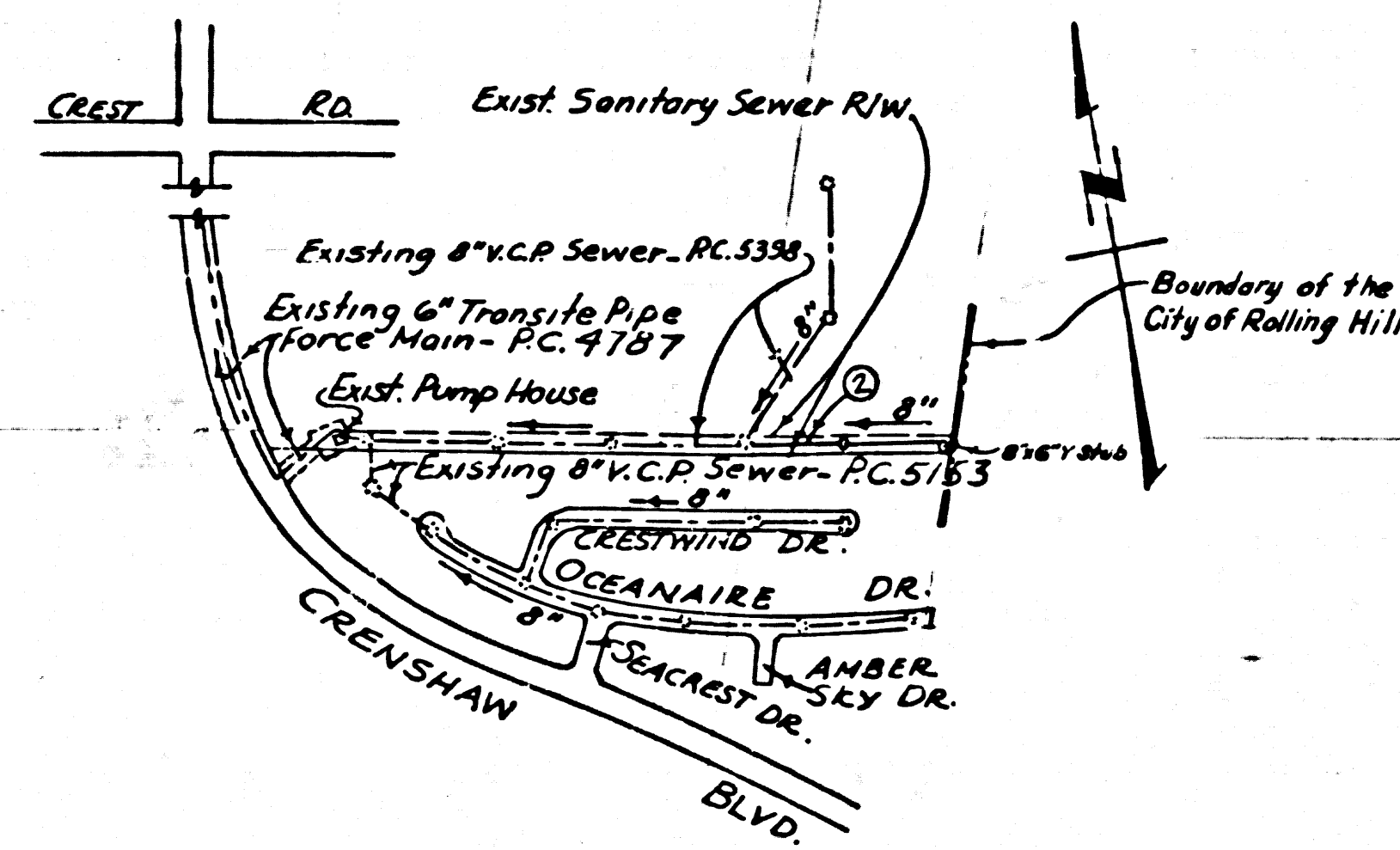
SANITARY SEWER R/W
 PRIVATE CONTRACT NO. 6389

W.S. 27
 1 SHEET, 2 PAGES
 SCALE: VERT. 1"=4'
 HORIZ. 1"=40' NOVEMBER 1962

33526

PREPARED IN THE OFFICES OF
 KISTNER, WRIGHT & WRIGHT
 1125 W. SIXTH STREET
 LOS ANGELES 17, CALIFORNIA
 BY *Henry Claude Kistner*
 REG. C. E. NO. 5517
 FOR LEGEND SEE PLAN NO. S-A-64

B. M. S.Y. 4402 Elev. 1201.398 - L.A. Co. Surveyor's Mon. Marked
 B.M. 50-7-1956 R.E. 5869 In 12" Conc. Post - 4" Above Ground N.E. Corner
 Crest Road And Crenshaw Blvd. 92.5' ELY Of Center Of Pavement
 4' 40" N. Of Center Of Pavement, 55.3' E. Of Pole 1036438 E Under Guy Cable.
 Baseline 1955



Note: Figure In Circle Indicates Page Number

INDEX MAP
 P.C. 6389
 SCALE: 1"=600'

- NOTES
1. PROVIDE STAKES ON THE PROPERTY LINE OR PROPERTY LINES PRODUCED AT RIGHT ANGLES TO THE SEWER LINE AT THE CENTER LINE OF EACH MANHOLE.
 2. NO REPRESENTATIVE OF THE COUNTY ENGINEER WILL SURVEY OR LAYOUT ANY PORTION OF THE WORK.
 3. THE PRIVATE ENGINEER SHALL FURNISH THE COUNTY ENGINEER WITH GRADE SHEETS AND STATIONING FOR ALL HOUSE LATERALS AND Y BRANCHES AND SHALL PROVIDE STAKES FOR THEM AT THEIR PROPER LOCATIONS WITH STATIONING PLAINLY MARKED. ANY CHANGE IN ALIGNMENT SHALL BE REQUESTED IN WRITING BY THE PRIVATE ENGINEER.
 4. NO REVISIONS SHALL BE MADE IN THESE PLANS WITHOUT THE APPROVAL OF THE COUNTY ENGINEER.
 5. USE STANDARD MANHOLE FRAMES AND COVERS, S-A-117, EXCEPT AS NOTED.
 6. USE EXTRA STRENGTH PIPE. ALL PIPE IS STANDARD DEPTH.
 7. USE MECHANICAL COMPRESSION JOINTS FOR ALL V.C.P. JOINTS PER SPEC SECS 34, 46, & 49.
 8. REPAIRS TO EXISTING SEWERS SHALL BE MADE TO THE SAME STANDARD AS THE NEW SEWER.
 9. IF A POWER POLE IS WITHIN THREE FEET OF THE SEWER, THE SEWER SHALL BE ENCASED PER S-A-172, CASE III, TWO FEET ON EITHER SIDE FROM THE POINT OF INTERFERENCE.
 10. MANHOLES SHALL BE BRICK SEWER STRUCTURES, S-A-109, PRECAST CONCRETE MANHOLES PER S-A-135 OR S-A-138 MAY BE USED AS AN ALTERNATE IN LOCATIONS APPROVED BY THE COUNTY ENGINEER.
 11. FOR ALLOWABLE LEAKAGE TEST USE FORMULA NO. 1 PER SPEC. SEC. 54.
 12. MANHOLE 1.5% IN UNIMPROVED RIGHTS-OF-WAY TO BE 6" ABOVE FINISH GRADE.
 13. THE PRIVATE ENGINEER SHALL FURNISH THE HOUSE LATERAL DEPTH AT THE PROPERTY LINE BELOW THE TOP OF CURB ELEVATION FOR EACH HOUSE LATERAL ON THE GRADE SHEET.
 14. STANDARD SPECIFICATIONS DATED MAY 25, 1962 APPLY IN THE CONSTRUCTION OF THIS PROJECT.
 15. THE CONTRACTOR SHALL NOTIFY THE CONSTRUCTION DIVISION BY TELEPHONE, MADISON 9-4747 EXT. 81551 AT LEAST TWENTY-FOUR HOURS BEFORE STARTING ANY WORK UNDER THIS CONTRACT.
 16. IF DURING THE COURSE OF CONSTRUCTION IT IS DETERMINED THAT THERE IS LESS THAN FOUR FEET OF COVER OVER THE TOP OF A MAINLINE OR HOUSE LATERAL V.C.P. SEWER WHICH IS NOT INDICATED ON THE PLANS, THE PIPE SHALL BE ENCASED PER S-A-172, CASE III, UNLESS OTHERWISE APPROVED BY THE COUNTY ENGINEER.
 17. ALL STATE AND LOCAL TRENCH SAFETY ORDERS WILL BE RIGIDLY ENFORCED.

NO CONNECTIONS FOR THE DISPOSAL OF INDUSTRIAL WASTES SHALL BE MADE TO SEWERS SHOWN ON THESE DRAWINGS WITHOUT WRITTEN PERMISSION FROM THE CHIEF ENGINEER AND GENERAL MANAGER OF THE COUNTY SANITATION DISTRICTS.

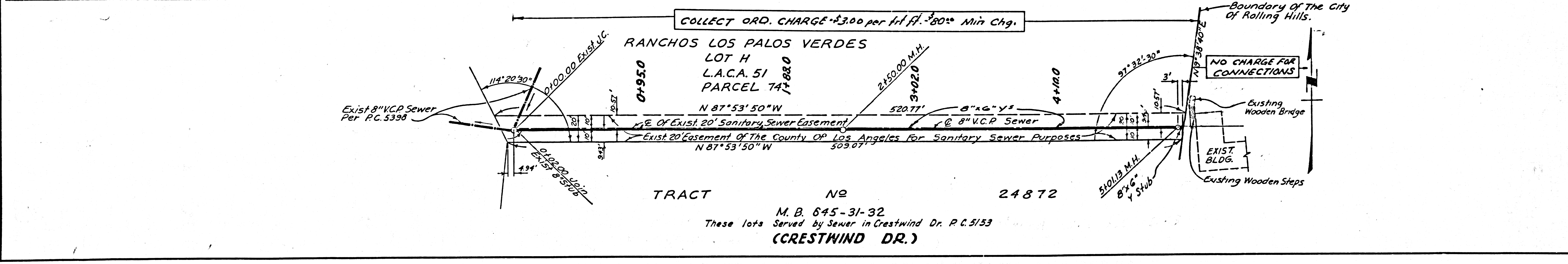
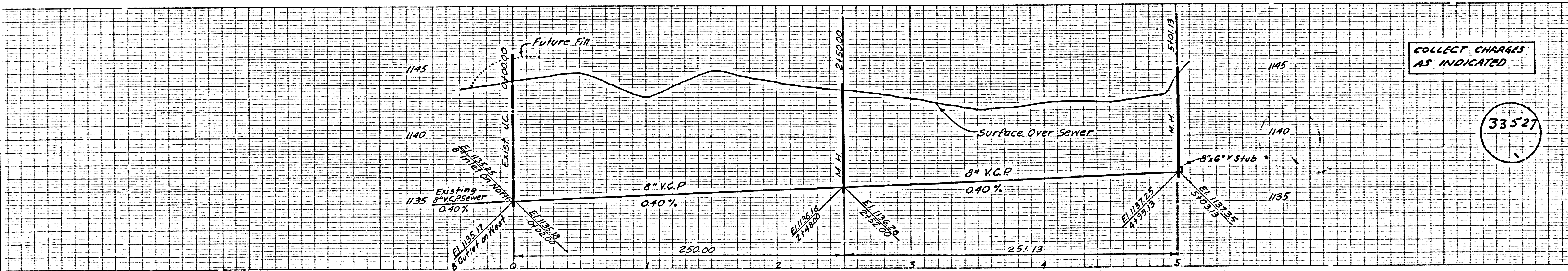
COLLECT CHARGES AS INDICATED:
[Signature]

NOTE: GRADES TO WHICH THIS IMPROVEMENT IS TO BE CONSTRUCTED ARE SHOWN ON PLANS AND PROFILES. GRADE POINTS FOR TOP OF CURBS, CENTER LINE OF STREETS, OR CENTER LINE OF ALLEYS ARE SHOWN BY CIRCLES ON PROFILES. AT ALL POINTS BETWEEN DESIGNATED POINTS THE GRADE SHALL BE ESTABLISHED SO AS TO CONFORM TO A STRAIGHT LINE DRAWN BETWEEN SAID DESIGNATED POINTS.
 ELEVATIONS ARE IN FEET ABOVE U.S.C. & G.S. SEA LEVEL DATUM OF 1929.
 THE DRAWING AND THE DATA HEREON ARE HEREBY MADE A PART OF THE SPECIFICATIONS.
 WORK SHALL BE CONSTRUCTED ACCORDING TO SPECIFICATIONS ON FILE IN THE OFFICE OF THE COUNTY ENGINEER AND SHALL BE PROSECUTED ONLY IN THE PRESENCE OF THE COUNTY ENGINEER.
 BEFORE WORK CAN BE STARTED, THE CONTRACTOR MUST OBTAIN A PERMIT TO EXCAVATE IN COUNTY STREETS FROM THE L.A. COUNTY ROAD DIST. DISTRICT OFFICE NO. 8 AND PAY A FEE TO THE COUNTY ENGINEER ROOM 500 CO. ENGINEER BLDG. ROOM 1125 SECOND ST. L.A. SUFFICIENT TO COVER THE COST OF CONSTRUCTION INSPECTION AND RECORD PLANS.
 APPROVAL OF THIS PLAN BY THE COUNTY OF LOS ANGELES DOES NOT CONSTITUTE A REPRESENTATION AS TO THE ACCURACY OF THE LOCATION OF OR THE EXISTENCE OR NON-EXISTENCE OF ANY UNDERGROUND UTILITY PIPE, OR STRUCTURE WITHIN THE LIMITS OF THE PROJECT. THIS NOTE APPLIES TO ALL PAGES.
 IF WORK IS TO BE DONE IN A STATE HIGHWAY, A PERMIT MUST BE OBTAINED FROM THE STATE OF CALIFORNIA, DIVISION OF HIGHWAYS, 120 SOUTH SPRING STREET.

COUNTY OF LOS ANGELES, CALIFORNIA
 APPROVED, JOHN A. LAMBIE, COUNTY ENGINEER
 APPROVED, J.D. PARKHURST, CHIEF ENGINEER
 CO. SAN. DIST. NO. 5
 BY *[Signature]* ASST. SANITATION ENGINEER
 BY *[Signature]* OFFICE ENGINEER
 CHECKED BY *[Signature]* 1-15-63
 OFFICE OF COUNTY ENGINEER, REG. C. E. NO. 3486
 SUBMITTED BY: *[Signature]*
 PALOS VERDES-CENTINELA VALLEY REGIONAL ENGINEER

COLLECT CHARGES AS INDICATED

33527



TRACT NO 24872
 M. B. 645-31-32
 These lots Served by Sewer in Crestwind Dr. P.C. 5153
 (CRESTWIND DR.)