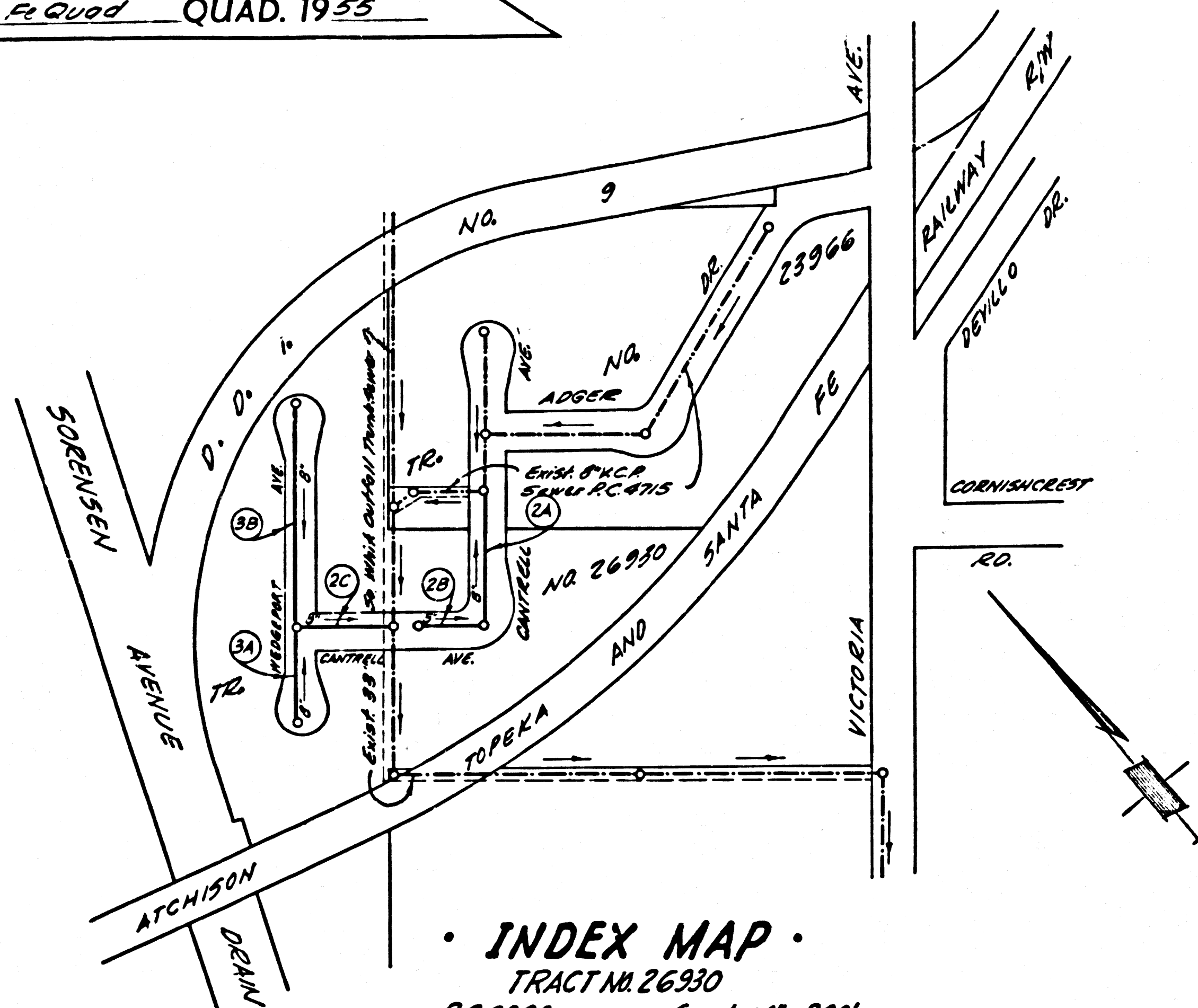


B.M. 51161 ELEV. 167.590

L.N. Ch. ref. of advy. to Highwood Meadows Inn & 45' S. & Telegraph Rd. (1944)

Santa Fe Quad QUAD. 1955



INDEX MAP TRACT NO. 26930 P.C. 6390 Scale: 1" = 200'

WHITTIER BLDG. DIST. NO. 11

PROFILE ALIGNMENT AND GRADE OF P.C. 6390

SANITARY SEWERS PAGE 1

TO BE CONSTRUCTED IN

TRACT NO. 26930

PRIVATE CONTRACT NO. 6390

W.S. 34

2 SHEETS, 3 PAGES

SCALE: VERT. 1" = 4' HORIZ. 1" = 40'

NOV. 1962

PREPARED IN THE OFFICES OF

THOMSEN ENGINEERING INC.

By: Hans C. Thomsen

REG. C. E. NO. 8244

FOR LEGEND SEE PLAN NO. S-6-64

NOTE: GRADES TO WHICH THIS IMPROVEMENT IS TO BE CONSTRUCTED ARE SHOWN ON PLANS AND PROFILE. GRADE POINTS FOR TOP OF CURBS, CENTER LINE OF STREETS, OR CENTER LINE OF ALLEYS ARE SHOWN BY CIRCLES ON PROFILES. AT ALL POINTS BETWEEN DESIGNATED POINTS THE GRADE SHALL BE ESTABLISHED SO AS TO CONFORM TO A STRAIGHT LINE DRAWN BETWEEN SAID DESIGNATED POINTS. ELEVATIONS ARE IN FEET ABOVE U.S.C. & G.S. SEA LEVEL DATUM OF 1929. THIS DRAWING AND THE DATA HEREON ARE HEREBY MADE A PART OF THE SPECIFICATIONS. WORK SHALL BE CONSTRUCTED ACCORDING TO STANDARD SPECIFICATIONS DATED MARCH 25, 1962, ON FILE IN THE OFFICE OF THE COUNTY ENGINEER AND SHALL BE PROSECUTED ONLY IN THE PRESENCE OF THE COUNTY ENGINEER. BEFORE WORK CAN BE STARTED, THE CONTRACTOR MUST OBTAIN A PERMIT TO OCCUPY STREETS FROM THE L.A. COUNTY ROAD DEPT., DISTRICT OFFICE NO. 428, 428 WEST SECOND STREET, LOS ANGELES, CALIFORNIA, AND PAY A FEE TO THE COUNTY ENGINEER, ROOM 300, COUNTY ENGINEERING BUILDING, 108 WEST SECOND STREET, LOS ANGELES, CALIFORNIA. APPROVAL OF THIS PLAN BY THE COUNTY OF LOS ANGELES DOES NOT CONSTITUTE A REPRESENTATION AS TO THE ACCURACY OF THE LOCATION OR OF THE EXISTENCE OR NON-EXISTENCE OF ANY UNDERGROUND UTILITY PIPE, OR STRUCTURE WITHIN THE LIMITS OF THIS PROJECT. THIS NOTE APPLIES TO ALL PAGES. IF WORK IS TO BE DONE IN A STATE HIGHWAY, A PERMIT MUST BE OBTAINED FROM THE STATE OF CALIFORNIA, DIVISION OF HIGHWAYS, 130 SOUTH SPRING STREET, LOS ANGELES, CALIFORNIA.

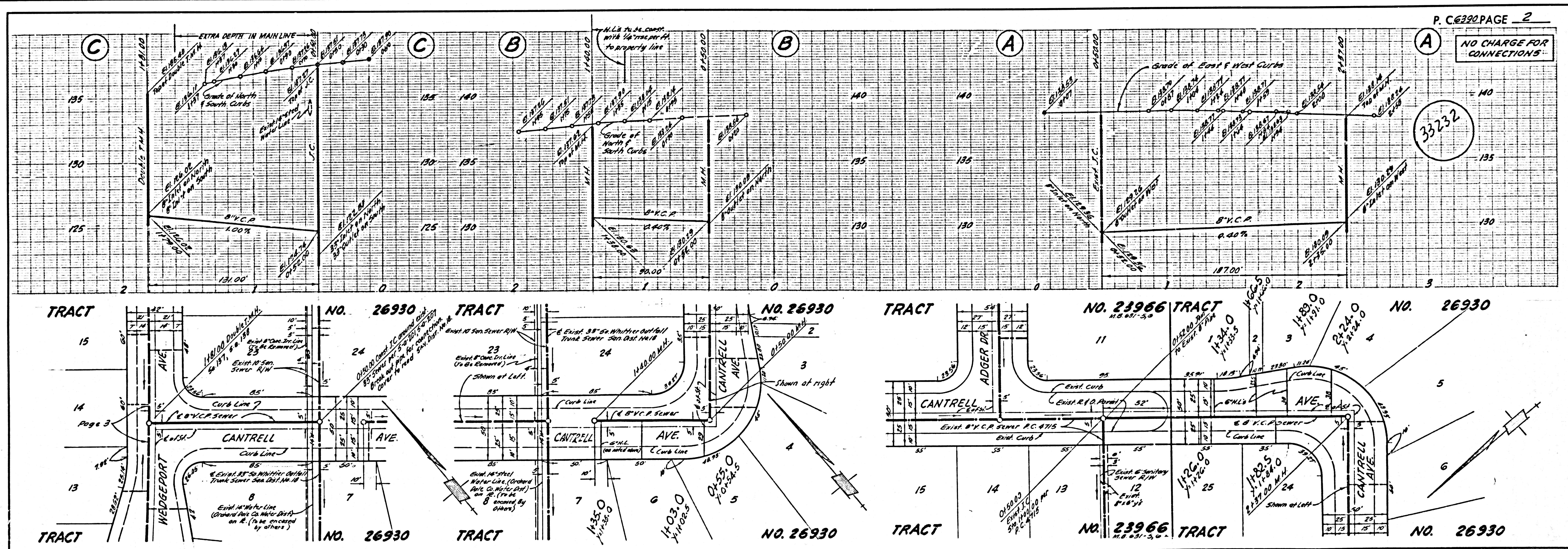
- 1. PROVIDE STAKES ON THE PROPERTY LINE OR PROPERTY LINES PRODUCED AT RIGHT ANGLES TO THE SEWER LINE AT THE CENTER LINE OF EACH MANHOLE.
2. NO REPRESENTATIVE OF THE COUNTY ENGINEER WILL SURVEY OR LAY OUT ANY PORTION OF THE WORK.
3. THE PRIVATE ENGINEER SHALL FURNISH THE COUNTY ENGINEER WITH GRADE SHEETS AND STATIONING FOR ALL HOUSE LATERALS AND Y BRANCHES AND SHALL PROVIDE STAKES FOR THEM AT THEIR PROPER LOCATIONS WITH STATIONING PLAINLY MARKED. ALL HOUSE LATERALS SHALL BE CONSTRUCTED IN A STRAIGHT ALIGNMENT AT RIGHT ANGLES FROM THE MAIN LINE SEWER EXCEPT AS SHOWN ON THE PLANS. HOUSE LATERALS FROM CHIMNEYS SHALL NOT HAVE AN ANGLE OF LESS THAN 45° WITH THE MAIN LINE SEWER. ANY CHANGE IN ALIGNMENT SHALL BE REQUESTED IN WRITING BY THE PRIVATE ENGINEER.
4. THE PRIVATE ENGINEER SHALL FURNISH THE HOUSE LATERAL DEPTH AT THE PROPERTY LINE BELOW THE 1.0% OF CURB ELEVATION FOR EACH HOUSE LATERAL ON THE GRADE SHEET.
5. NO REVISIONS SHALL BE MADE IN THESE PLANS WITHOUT THE APPROVAL OF THE COUNTY ENGINEER.
6. THE CONTRACTOR SHALL NOTIFY THE CONSTRUCTION DIVISION BY TELEPHONE, MADISON 9-4747, EXT. 8151, AT LEAST TWENTY-FOUR HOURS BEFORE STARTING ANY WORK UNDER THIS CONTRACT, EXCEPT AS NOTED.
7. MANHOLES SHALL BE BRICK SEWER STRUCTURES PER S-104. PRECAST CONCRETE MANHOLES PER S-135 OR S-173 MAY BE USED AS AN ALTERNATE IN LOCATIONS APPROVED BY THE COUNTY ENGINEER.
8. USE STANDARD MANHOLE FRAMES AND COVERS, S-117, EXCEPT AS NOTED.
9. MANHOLE TOPS IN UNIMPROVED RIGHTS-OF-WAY TO BE SIX INCHES ABOVE FINISHED GRADE.
10. USE EXTRA STRENGTH PIPE, ALL PIPE IS STANDARD DEPTH EXCEPT AS NOTED.
11. USE CEMENT MORTAR OR MECHANICAL COMPRESSION JOINTS FOR ALL V.C.P. JOINTS PER SPEC'S, SECS. 34 & 48, MAIN LINE ONLY.
12. WHERE EVER GROUND WATER IS ENCOUNTERED DURING THE CONSTRUCTION OF THE SEWERS, THE V.C.P. JOINTS SHALL BE OF JOINT COMPOUND PER SPEC'S, SECS. 33 & 48, OR MECHANICAL COMPRESSION JOINTS PER SPEC'S, SEC. 34.
13. IF A POWER POLE IS WITHIN THREE FEET OF THE SEWER, THE SEWER SHALL BE ENCASED, PER S-173, CASE II, TWO FEET ON EITHER SIDE FROM THE POINT OF INTERFERENCE.
14. IF DURING THE COURSE OF CONSTRUCTION IT IS DETERMINED THAT THERE IS LESS THAN FOUR FEET OF COVER OVER THE TOP OF A MAIN LINE OR HOUSE LATERAL V.C.P. SEWER WHICH IS NOT INDICATED ON THE PLANS, THE PIPE SHALL BE ENCASED PER S-173, CASE II, UNLESS OTHERWISE APPROVED BY THE COUNTY ENGINEER.
15. HOUSE LATERALS TO BE CONSTRUCTED WITH INVERTS AT PROPERTY LINE... FEET BELOW CURB GRADE EXCEPT AS NOTED.
16. RESURFACE ALL TRENCHES WITHIN PAVED AREAS TO MEET L.A. COUNTY ROAD DEPT. OR CALIFORNIA STATE HIGHWAY REQUIREMENTS IN ACCORDANCE WITH PERMITS.
17. FOR ALLOWABLE LEAKAGE TEST USE FORMULA NO. 100, SPEC'S, SEC. 54.
18. ALL STATE AND LOCAL TRENCH SAFETY ORDERS WILL BE RIGIDLY ENFORCED.
19. USE MECHANICAL COMPRESSION JOINTS FOR ALL HOUSE LATERALS PER SPEC'S, SEC. 36 & 49.

NO CONNECTIONS FOR THE DISPOSAL OF INDUSTRIAL WASTES SHALL BE MADE TO SEWERS SHOWN ON THESE DRAWINGS WITHOUT WRITTEN PERMISSION FROM THE CHIEF ENGINEER AND GENERAL MANAGER OF THE COUNTY SANITATION DISTRICTS BEFORE BREAKING INTO ANY EXISTING STRUCTURE AND BEFORE FINAL ACCEPTANCE OF THIS WORK, COUNTY SANITATION DISTRICT (DU 4-1281) SHALL BE NOTIFIED IN ORDER THAT THE REQUIRED INSPECTION CAN BE MADE.

NO CHARGE FOR CONNECTIONS

COUNTY OF LOS ANGELES, CALIFORNIA
JOHN A. LAMBIE, COUNTY ENGINEER
J. D. PARKHURST, CHIEF ENGINEER
APPROVED BY: [Signature] ASSISTANT SANITATION ENGINEER
APPROVED BY: [Signature] OFFICE ENGINEER
SUBMITTED BY: [Signature] REGIONAL ENGINEER
CHECKED BY: [Signature] REGIONAL ENGINEER

J.N. 0359.26



P.C. 6390 PAGE 2

NO CHARGE FOR CONNECTIONS

33232

NO CHARGE FOR CONNECTIONS

332.33

