

B.M. 544391 A.D. B.M. THE W.N. CURB
CREST RD 2' W. CURB OPENING 40' N.E.
CREST RD 1' 78' E. HAWTHORNE BLVD.
C.T. 933.340

DOUBLE SCALE
LOMITA BLDG. DIST. NO. 12

PROFILE ALIGNMENT AND GRADE OF P.C. 6392
SANITARY SEWERS PAGE 1
TO BE CONSTRUCTED IN J.A. 0359.28

TRACT N° 27832 F
TRACT N° 27677

PRIVATE CONTRACT NO. 6392

W.S. 27

4 SHEETS; 8 PAGES

SCALE: VERT. 1"=4'
HORIZ. 1"=40' NOV. 1962

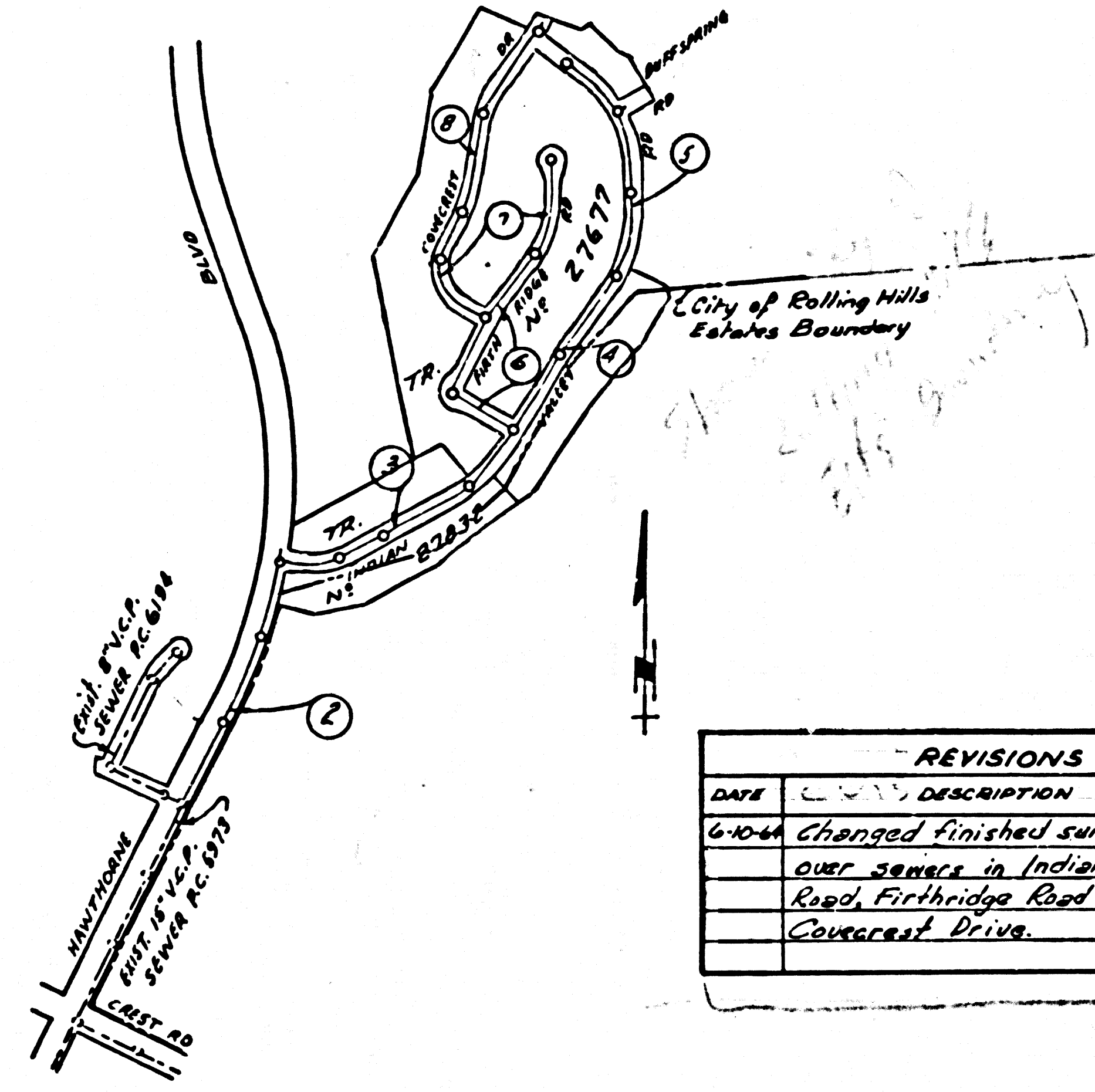
PREPARED IN THE OFFICES OF

BARCLAY PEARSON CO., INC.

By: Edward L. Pearson
REG. C. E. NO. 9283

FOR LEGEND SEE PLAN NO. S-A-64

34735



INDEX MAP
TRACT N° 27832, 27677
P.C. 6392 Scale 1"=600'

- NOTES:
- 1. PROVIDE STAKES ON THE PROPERTY LINE OR PROPERTY LINES PRODUCED AT RIGHT ANGLES TO THE SEWER LINE AT THE CENTER LINE OF EACH MANHOLE.
- 2. NO REPRESENTATIVE OF THE COUNTY ENGINEER WILL SURVEY OR LAY OUT ANY PORTION OF THE WORK.
- 3. THE CONTRACTOR SHALL FURNISH THE COUNTY ENGINEER WITH GRADE SHEETS AND STATIONING FOR ALL HOUSE LATERALS AND T BRANCHES AND SHALL PROVIDE STAKES FOR THEM AT THEIR PROPER LOCATIONS WITH STATIONING PLAINLY MARKED. ANY CHANGE IN LOCATION SHALL BE REQUESTED IN WRITING BY THE CONTRACTOR. ALL HOUSE LATERALS SHALL BE CONSTRUCTED IN A STRAIGHT ALIGNMENT AT RIGHT ANGLES FROM THE MAIN LINE SEWER EXCEPT AT CORNERS OF THE BLOCK.
- 4. THE PRIVATE ENGINEER SHALL FURNISH THE HOUSE LATERAL DEPTH AT THE PROPERTY LINE BELOW THE TOP OF CURB ELEVATION FOR EACH HOUSE LATERAL ON THE GRADE SHEET.
- 5. NO REVISIONS SHALL BE MADE IN THESE PLANS WITHOUT THE APPROVAL OF THE COUNTY ENGINEER.
- 6. USE STANDARD MANHOLE FRAMES AND COVERS, S-17, EXCEPT AS NOTED.
- 7. USE EXTRA STRENGTH PIPE. ALL PIPE IS STANDARD DEPTH.
- 8. USE MECHANICAL COMPRESSION JOINTS FOR ALL V.C.P. JOINTS PER SPEC. SECS. 34 & 40.148
- 9. RESURFACE ALL TRENCH WITHIN PAVED AREA TO MEET L.A. COUNTY ROAD DEPT. OR CALIF. STATE HIGHWAY REQUIREMENTS IN ACCORDANCE WITH PRINTS.
- 10. ENCASE FOUR FEET OF SEWER AT POINTS OF INTERFERENCE WITH POLES, CASE III, S-172.
- 11. HOUSE LATERALS TO BE CONSTRUCTED WITH INVERTS AT PROPERTY LINE 3 FEET BELOW CURB GRADE EXCEPT AS NOTED.
- 12. ALL STRUCTURES SHALL BE BRICK SEWER STRUCTURES, 5-104, PRECAST CONCRETE MANHOLES, PER S-A-128 OR PER S-172 MAY BE USED AT THE DISCRETION OF THE COUNTY ENGINEER.
- 13. FOR ALLOWABLE LEAKAGE TEST USE FORMULA NO. 100, SPEC. SEC. 34.
- 14. MANHOLE TOPS IN UNIMPROVED RIGHTS-OF-WAY TO BE SIX INCHES ABOVE FINISHED GRADE.
- 15. THE CONTRACTOR SHALL NOTIFY THE CONSTRUCTION DIVISION BY TELEPHONE, MADISON 9-4147, AT LEAST TWENTY-FOUR HOURS BEFORE STARTING ANY WORK UNDER THIS CONTRACT.
- 16. IF DURING THE COURSE OF CONSTRUCTION IT IS DETERMINED THAT THERE IS LESS THAN FOUR FEET OF COVER OVER THE TOP OF A MAIN LINE OR HOUSE LATERAL V.C.P. SEWER WHICH IS NOT INDICATED ON THE PLANS, THE PIPE SHALL BE ENCASED PER S-172, CASE III, UNLESS OTHERWISE APPROVED BY THE COUNTY ENGINEER.
- 17. ALL STATE AND LOCAL TRENCH JACKET ORDERS WILL BE RIGIDLY ENFORCED.
- 18. SPECIFICATIONS ENDED MAY BE APPLIED IN THE CONSTRUCTION OF THIS PROJECT.
- 19. (a) NO CONSTRUCTION WILL BE PERMITTED IN FALLEN AREAS UNLESS ACCEPTABLE CERTIFICATION IS SUBMITTED TO THE CONSTRUCTION DIVISION OF THE COUNTY ENGINEER'S DEPARTMENT THAT RELATIVE COMPACTION IS GREATER THAN 90%.
- (b) IF COMPACTION IS LESS THAN 90%, THE SEWER MUST BE COATED PER S-172, SPECIAL M.H. BASES MUST BE INSTALLED PER S-123 AS INDICATED ON THESE PLANS.
- (c) IF COMPACTION IS GREATER THAN 90%, CRACKING AND SPECIAL M.H. BASES ARE NOT REQUIRED.
- 20. THE EXISTENCE & LOCATION OF ANY UNDERGROUND UTILITY PIPES OR STRUCTURES SHOWN ON THESE PLANS ARE OBTAINED BY A SEARCH OF THE AVAILABLE RECORDS. TO THE BEST OF OUR KNOWLEDGE THERE ARE NO EXISTING UTILITIES EXCEPT AS SHOWN ON THESE PLANS. THE CONTRACTOR IS REQUIRED TO TAKE PRECAUTIONARY MEASURES TO PROTECT THE UTILITY LINES SHOWN AND ANY OTHER LINES NOT OF RECORD OR NOT SHOWN ON THESE PLANS.

NO CONNECTIONS FOR THE DISPOSAL OF INDUSTRIAL WASTES SHALL BE MADE TO SEWERS SHOWN ON THESE DRAWINGS WITHOUT WRITTEN PERMISSION FROM THE CHIEF ENGINEER AND GENERAL MANAGER OF THE COUNTY SANITATION DISTRICTS.

COLLECT CHARGES AS INDICATED
L. L. L. 12-11-62

NOTE:
GRADES TO WHICH THIS IMPROVEMENT IS TO BE CONSTRUCTED ARE SHOWN ON PLANS AND PROFILE. GRADE POINTS FOR TOP OF CURB, CENTER LINE OF STREETS, OR CENTER LINE OF ALLEYS ARE SHOWN BY CIRCLES ON PROFILES. AT ALL POINTS BETWEEN DESIGNATED POINTS THE GRADE SHALL BE ESTABLISHED SO AS TO CONFORM TO A STRAIGHT LINE DRAWN BETWEEN SAID DESIGNATED POINTS.
ELEVATIONS ARE IN FEET ABOVE U.S.C. & G.S. SEA LEVEL DATUM OF 1929.
THIS DRAWING AND THE DATA HEREON ARE HEREBY MADE A PART OF THE SPECIFICATIONS.
WORK SHALL BE CONSTRUCTED ACCORDING TO SPECIFICATIONS ON FILE IN THE OFFICE OF THE COUNTY ENGINEER AND SHALL BE PROSECUTED ONLY IN THE PRESENCE OF THE COUNTY ENGINEER.
BEFORE WORK CAN BE STARTED, THE CONTRACTOR MUST OBTAIN A PERMIT TO EXCAVATE IN COUNTY STREETS FROM THE L. A. COUNTY ROAD DEPT., DISTRICT OFFICE NO. 5.
THE COUNTY ENGINEER, ROOM 300 COUNTY ENGINEERING BLDG., 405 W. 4th ST., LOS ANGELES, CALIF. 90013, IS AUTHORIZED TO INSPECT AND RECORD PLANS.
APPROVAL OF THIS PLAN BY THE COUNTY OF LOS ANGELES DOES NOT CONSTITUTE A REPRESENTATION AS TO THE ACCURACY OF THE LOCATION OF OR THE EXISTENCE OR NON-EXISTENCE OF ANY UNDERGROUND UTILITY PIPE, OR STRUCTURE WITHIN THE LIMITS OF THIS PROJECT. THIS NOTE APPLIES TO ALL PAGES.
IF WORK IS TO BE DONE IN A STATE HIGHWAY, A PERMIT MUST BE OBTAINED FROM THE STATE OF CALIFORNIA, DIVISION OF HIGHWAYS, 120 SOUTH SPRING STREET.

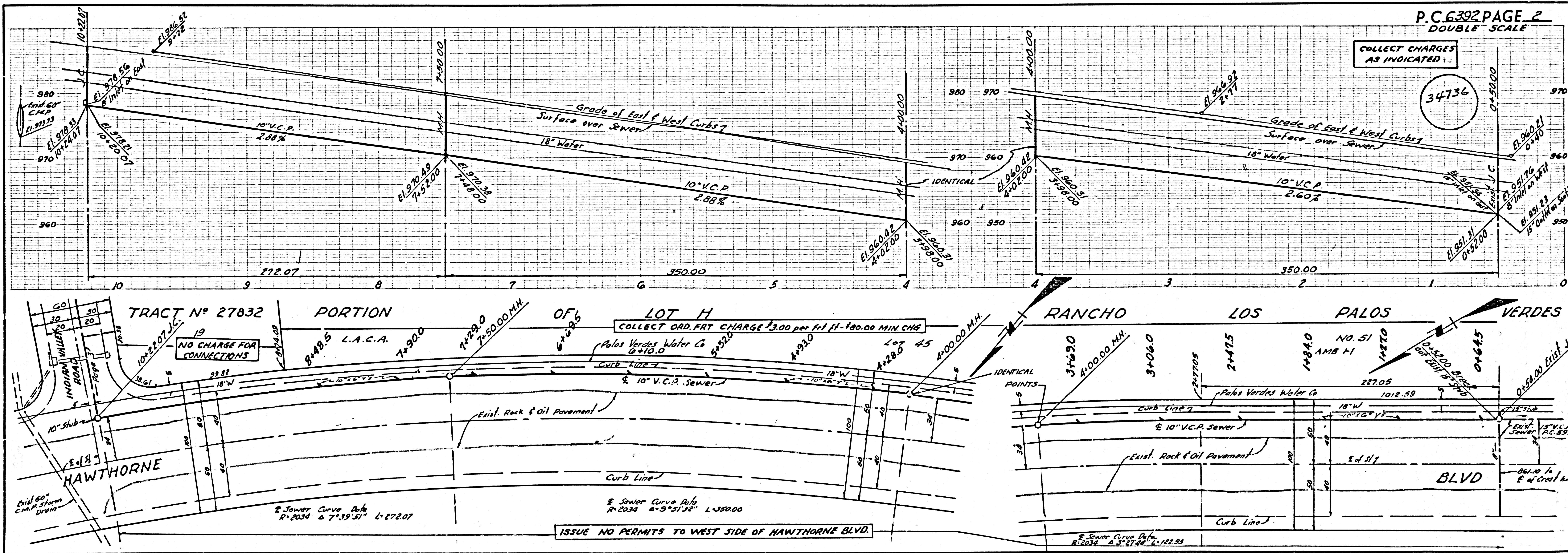
COUNTY OF LOS ANGELES, CALIFORNIA

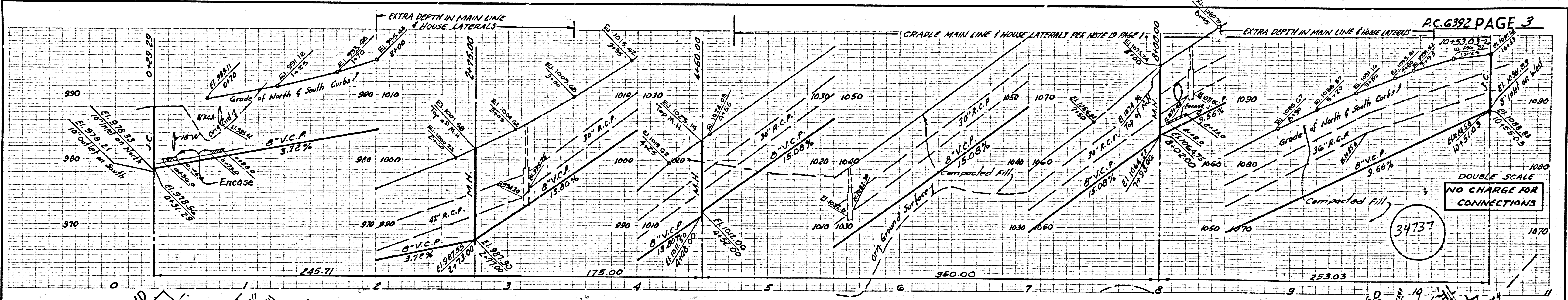
APPROVED, JOHN A. LAMBIE, COUNTY ENGINEER APPROVED, J. A. LAMBIE, CHIEF ENGINEER
C.O. SAN. DIST. NO. 5

BY: [Signatures] SANITATION ENGINEER OFFICE ENGINEER

CHECKED BY: [Signature] 12-13-62
OFFICE OF COUNTY ENGINEER, REG. C. E. NO. 3406

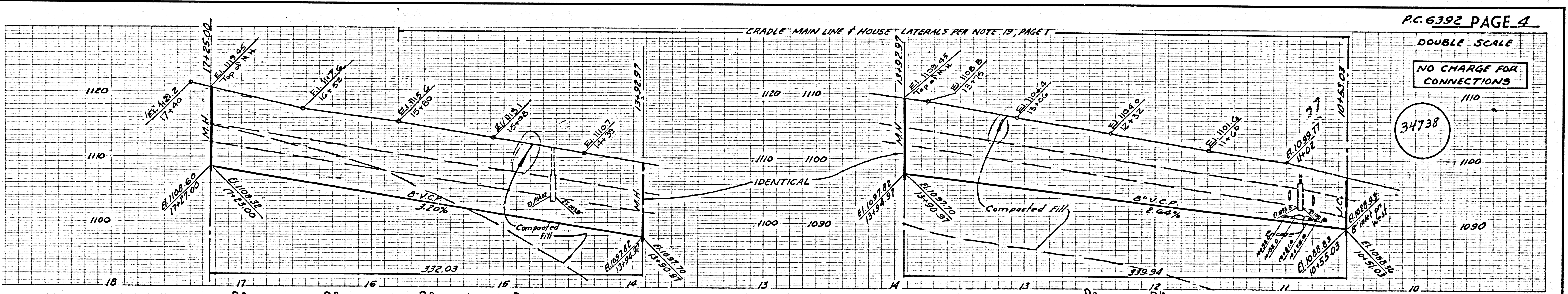
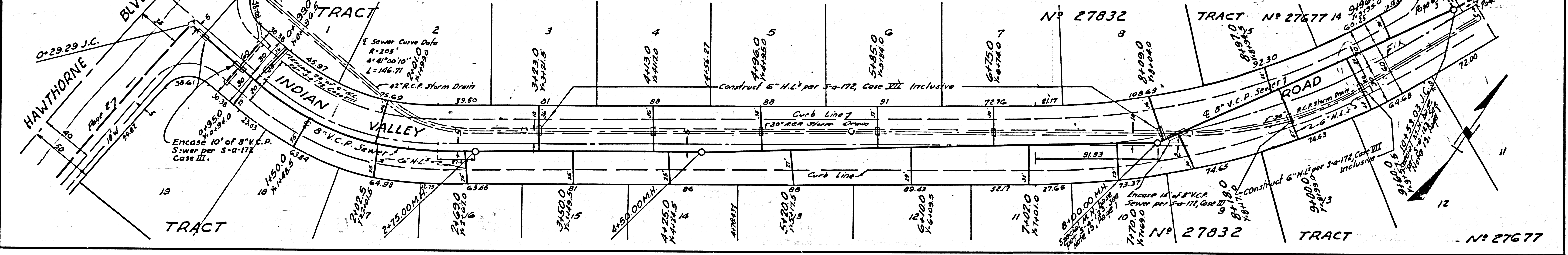
SUBMITTED [Signature] PALMS VERDES-CENTINELA VALLEY REGIONAL ENGINEER





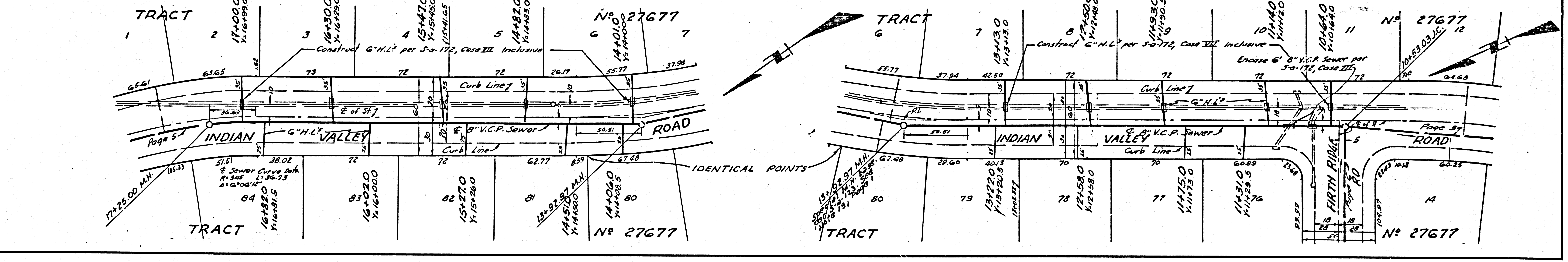
DOUBLE SCALE
NO CHARGE FOR CONNECTIONS

34737

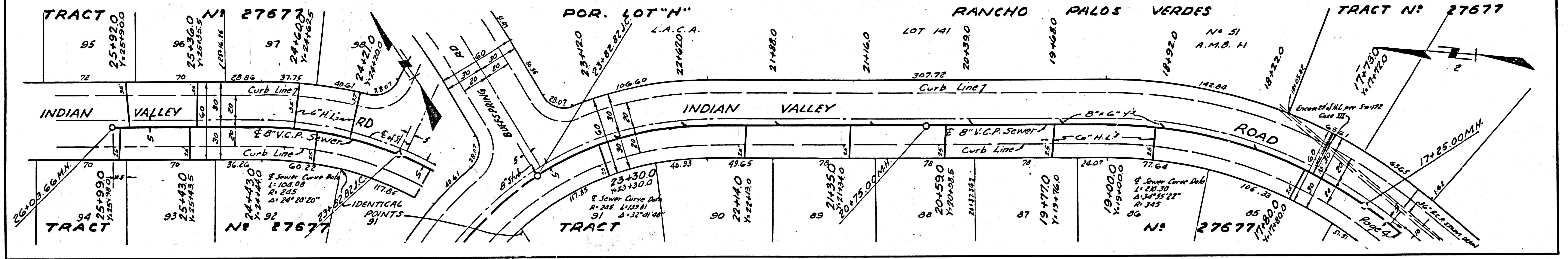
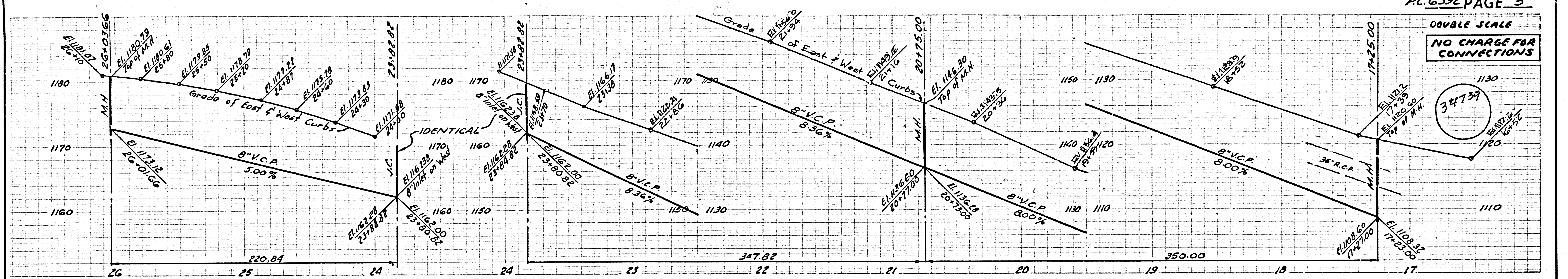


DOUBLE SCALE
NO CHARGE FOR CONNECTIONS

34738



DOUBLE SCALE
NO CHARGE FOR CONNECTIONS



DOUBLE SCALE
NO CHARGE FOR CONNECTIONS

