

TO BE CONSTRUCTED IN

LA PUENTE ROAD

PRIVATE CONTRACT NO. 6396

W.S. 38

1 SHEET ; 2 PAGES

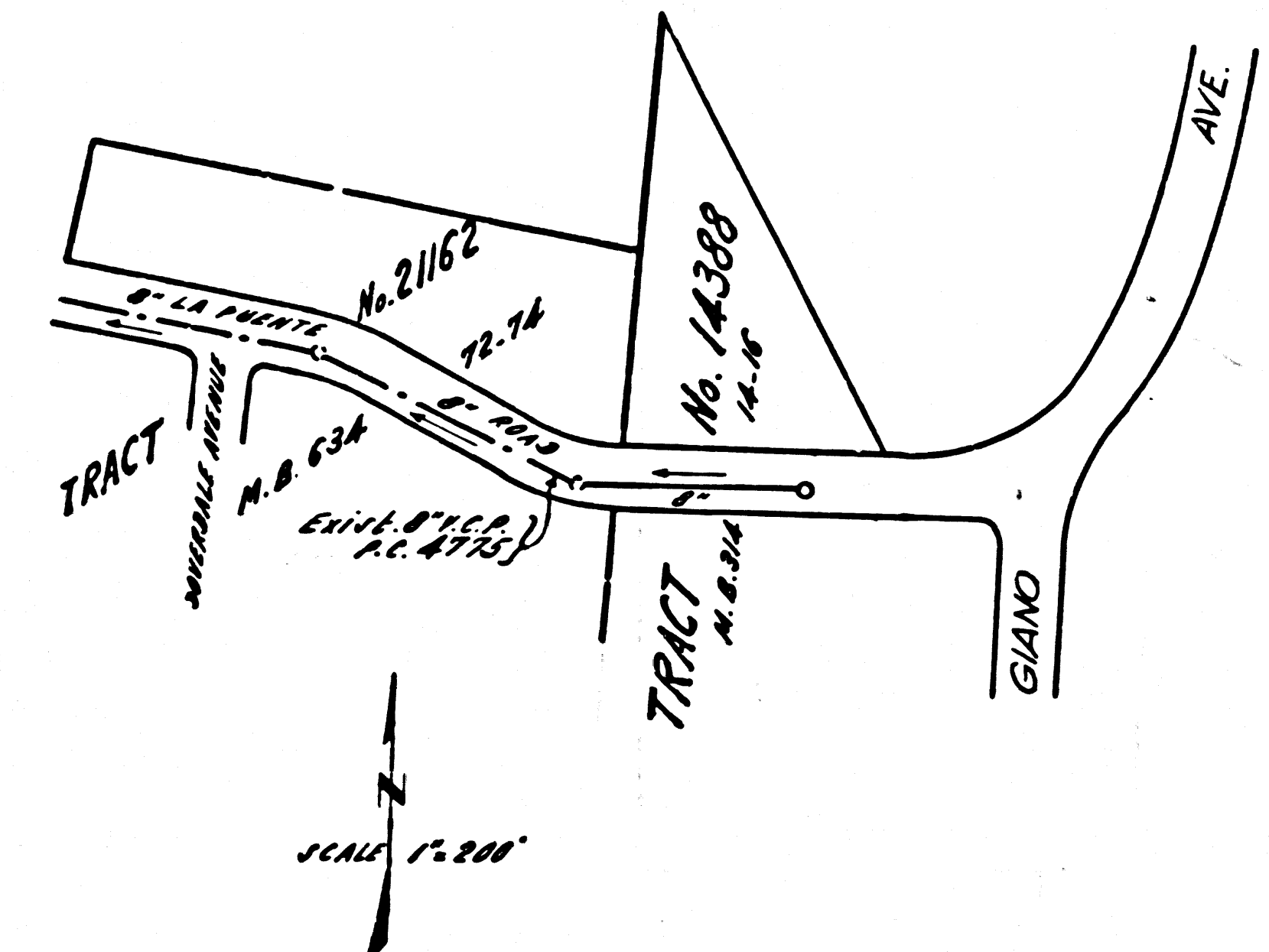
SCALE: VERT. 1"=4' HORIZ. 1"=40' November, 1962

PREPARED IN THE OFFICES OF NATIONAL ENGINEERING CO.

By: E. Epperson REG. C. E. NO. 5228

FOR LEGEND SEE PLAN NO. S-4-64

32922



INDEX MAP PORTION TRACT No. 14388 A.C. No. 6396

BENCH MARK: 561379.4 1/2" dia in ctr. of ch. ret. of Service Rd. island @ permit 58-245-E. of 1/2" dia of Conine Base line 1955 EL. 435.125

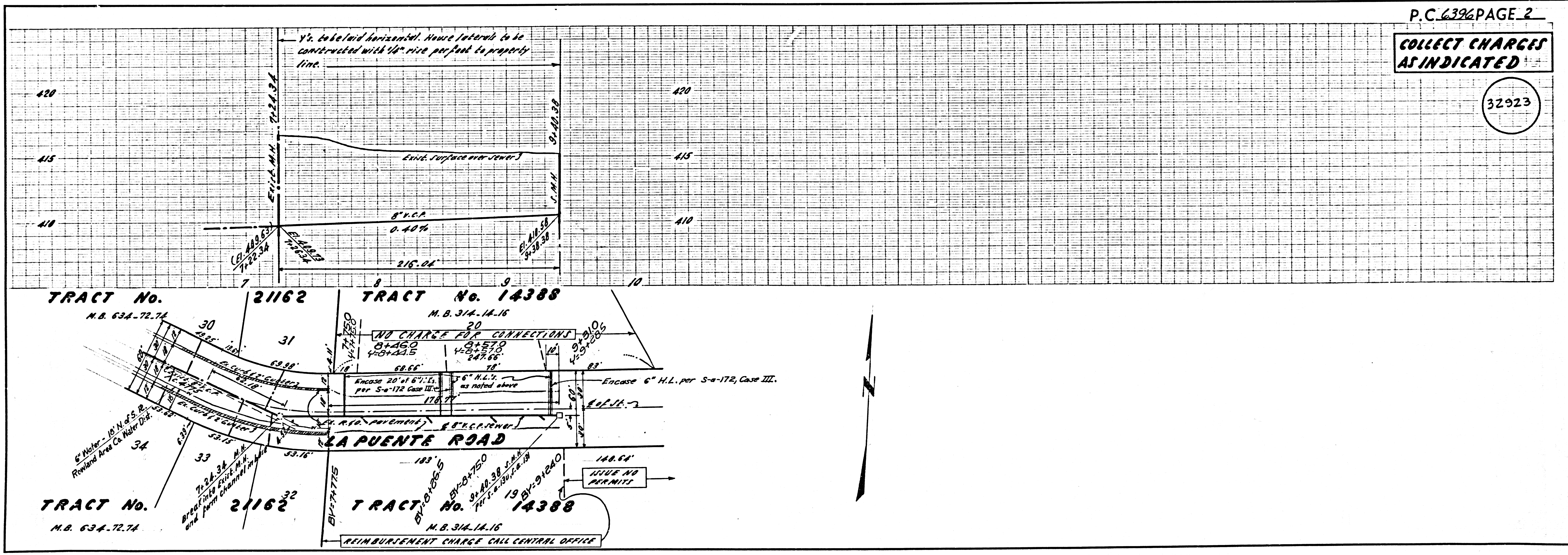
- NOTES: 1. PROVIDE STAKES ON THE PROPERTY LINE OR PROPERTY LINES PRODUCED AT RIGHT ANGLES TO THE SEWER LINE AT THE CENTER LINE OF EACH MANHOLE. 2. NO REPRESENTATIVE OF THE COUNTY ENGINEER WILL SURVEY OR LAY OUT ANY PORTION OF THE WORK. 3. THE CONTRACTOR SHALL FURNISH THE COUNTY ENGINEER WITH GRADE SHEETS AND STATEMENTS FOR ALL HOUSE LATERALS AND VENTPIPPERS AND SHALL PROVIDE STAKES FOR THEM AT THEIR PROPER LOCATIONS WITH IDENTIFYING PLAINLY MARKED ALL HOUSE LATERALS SHALL BE CONSTRUCTED IN A STRAIGHT ALIGNMENT AT RIGHT ANGLES TO THE MAINLINE SEWER... 15. HOUSE LATERALS TO BE CONSTRUCTED AS SHOWN ON PLANS.

NO CONNECTIONS FOR THE DISPOSAL OF INDUSTRIAL WASTES SHALL BE MADE TO SEWERS SHOWN ON THESE DRAWINGS WITHOUT WRITTEN PERMISSION FROM THE CHIEF ENGINEER AND GENERAL MANAGER OF THE COUNTY SANITATION DISTRICTS

NOTE: GRADES TO WHICH THIS IMPROVEMENT IS TO BE CONSTRUCTED ARE SHOWN ON PLANS AND PROFILES. GRADE POINTS AT TOP OF CURBS, CENTER LINE OF STREETS OR CENTER LINE OF ALLEYS ARE SHOWN BY CIRCLES ON PROFILES AT ALL POINTS BETWEEN DESIGNATED POINTS THE GRADE SHALL BE ESTABLISHED SO AS TO CONFORM TO A STRAIGHT LINE DRAWN BETWEEN SAID DESIGNATED POINTS. ELEVATIONS ARE IN FEET ABOVE U.S.C. & G.S. SEA LEVEL DATUM OF 1929. THIS DRAWING AND THE DATA HEREON ARE HEREBY MADE A PART OF THE SPECIFICATIONS. WORK SHALL BE CONSTRUCTED ACCORDING TO THE SPECIFICATIONS AND THE OFFICE OF THE COUNTY ENGINEER AND SHALL BE PROTECTED ONLY IN THE PRESENCE OF THE COUNTY ENGINEER. BEFORE WORK CAN BE STARTED, THE CONTRACTOR MUST OBTAIN A PERMIT TO EXCAVATE IN COUNTY STREETS FROM THE L. A. COUNTY ROAD DEPT., DISTRICT OFFICE NO. 1, AND PAY A FEE TO THE COUNTY ENGINEER, AND OBTAIN A PERMIT TO EXCAVATE IN A SIDEWALK FROM THE DISTRICT OFFICE NO. 1. THE CONTRACTOR SHALL BE RESPONSIBLE FOR THE PROTECTION OF ALL UTILITIES. THE CONTRACTOR SHALL BE RESPONSIBLE FOR THE PROTECTION OF ALL UTILITIES. THE CONTRACTOR SHALL BE RESPONSIBLE FOR THE PROTECTION OF ALL UTILITIES. IF WORK IS TO BE DONE IN A STATE HIGHWAY, A PERMIT MUST BE OBTAINED FROM THE STATE OF CALIFORNIA, DIVISION OF HIGHWAYS, 120 SOUTH SPRING STREET, LOS ANGELES, CALIFORNIA.

COUNTY OF LOS ANGELES, CALIFORNIA JOHN A. LAMBIE, COUNTY ENGINEER J. D. PARKHURST, CHIEF ENGINEER CO. SAN. DIST. NO. 21 APPROVED BY: [Signature] ASSISTANT SANITATION ENGINEER APPROVED BY: [Signature] OFFICE ENGINEER SUBMITTED BY: W. C. [Signature] 12-11-62 SAN DIMAS ORIGINAL EXHIBIT CHECKED BY: [Signature] 12-11-62 J.N. 6396-29

COLLECT CHARGES AS INDICATED



COLLECT CHARGES AS INDICATED

32923