

DOUBLE SCALE  
LOMITA BLDG. DIST. NO. 12

PROFILE ALIGNMENT AND GRADE OF P.C. 6405  
SANITARY SEWERS PAGE 1  
TO BE CONSTRUCTED IN J.N. 0359.35

TRACT N° 27681 34829

PRIVATE CONTRACT NO. 6405

W.S. 27

5 SHEETS; 9 PAGES

SCALE: VERT. 1"=8' DEC. 1962

HORIZ. 1"=40'

PREPARED IN THE OFFICES OF  
BARCLAY-PEARSON, INC.

By: *Edward L. Pearson*  
REG. C. E. NO. 8763

FOR LEGEND SEE PLAN NO. S-A-64

NOTE:  
GRADES TO WHICH THIS IMPROVEMENT IS TO BE CONSTRUCTED ARE SHOWN ON PLANS AND PROFILES. GRADE POINTS FOR TOP OF CURBS, CENTER LINE OF STREETS OR CENTER LINE OF ALLEYS ARE SHOWN BY CIRCLES ON PROFILES. AT ALL POINTS BETWEEN DESIGNATED POINTS THE GRADE SHALL BE ESTABLISHED SO AS TO CONFORM TO A STRAIGHT LINE DRAWN BETWEEN SAID DESIGNATED POINTS.  
ELEVATIONS ARE IN FEET ABOVE U.S.C. & G.S. SEA LEVEL DATUM OF 1929.  
THIS DRAWING AND THE DATA HEREON ARE HEREBY MADE A PART OF THE SPECIFICATIONS.  
WORK SHALL BE CONSTRUCTED ACCORDING TO SPECIFICATIONS ON FILE IN THE OFFICE OF THE COUNTY ENGINEER AND SHALL BE PROSECUTED ONLY IN THE PRESENCE OF THE COUNTY ENGINEER.  
BEFORE WORK CAN BE STARTED THE CONTRACTOR MUST OBTAIN A PERMIT TO EXCAVATE IN COUNTY STREETS FROM THE L.A. COUNTY ROAD DEPT. DISTRICT OFFICE NO. 3 AND PAY A FEE TO THE COUNTY ENGINEER ROOM FROM THE COUNTY ENGINEER, BLDG. DIST. NO. 12, SUFFICIENT TO COVER THE COST OF CONSTRUCTION INSPECTION AND RECORD PLANS.  
APPROVAL OF THIS PLAN BY THE COUNTY OF LOS ANGELES DOES NOT CONSTITUTE A REPRESENTATION AS TO THE ACCURACY OF THE LOCATION OF OR THE EXISTENCE OR NON-EXISTENCE OF ANY UNDERGROUND UTILITY PIPE, OR STRUCTURE WITHIN THE LIMITS OF THIS PROJECT. THIS NOTE APPLIES TO ALL PAGES.  
IF WORK IS TO BE DONE IN A STATE HIGHWAY, A PERMIT MUST BE OBTAINED FROM THE STATE OF CALIFORNIA, DIVISION OF HIGHWAYS, 120 SOUTH SPRING STREET.

COUNTY OF LOS ANGELES, CALIFORNIA

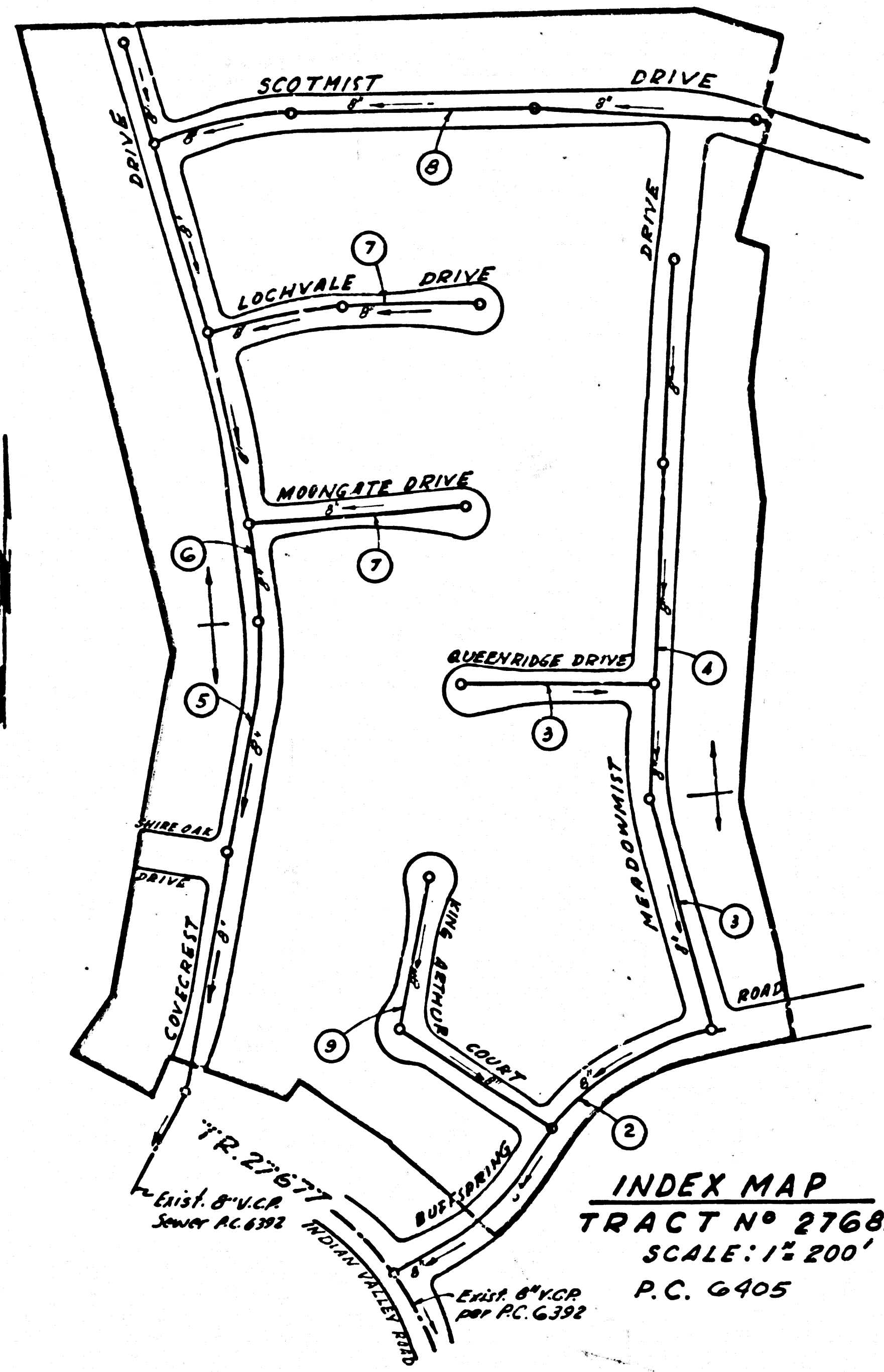
APPROVED, JOHN A. LAMBIE, COUNTY ENGINEER APPROVED, J. BARRETT, CHIEF ENGINEER

By: *S. H. Hughes* SANITATION ENGINEER By: *J. C. Williams* OFFICE ENGINEER

CHECKED BY: *W. S. Duda* 12-13-62

OFFICE OF COUNTY ENGINEER, REG. C. E. NO. 3406

SUBMITTED *Jack C. Reising*  
PALOS VERDES-CENTINELA VALLEY REGIONAL ENGINEER



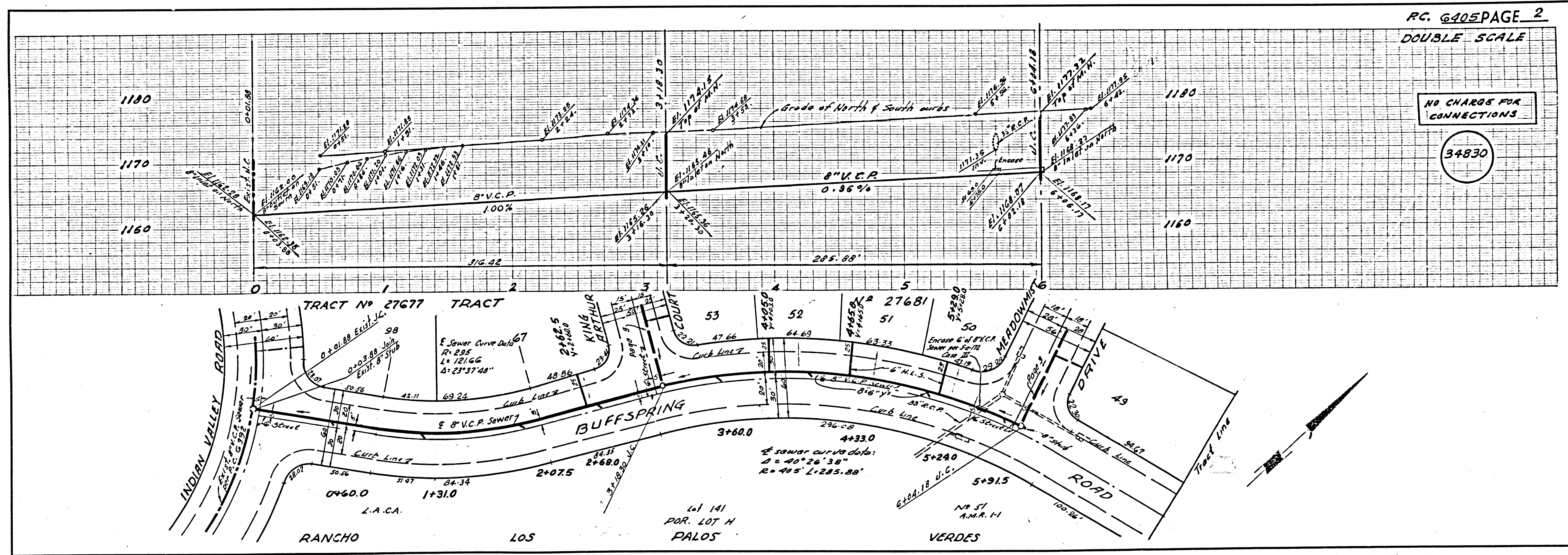
B.M. 374374 SPK. EL+40' N/O C/L  
HAWTHORNE BLVD.+4075' W/O C/L  
SILVER SPUR RD.+780' W/O G. CAYSLAKE RD.  
EL. 1093.022

ISSUE NO HOUSE  
CONNECTION PERMITS  
UNTIL P.C. 6392  
IS ACCEPTED

INDEX MAP  
TRACT N° 27681  
SCALE: 1"=200'  
P.C. 6405

NO CONNECTIONS FOR THE DISPOSAL OF INDUSTRIAL WASTES SHALL BE MADE TO SEWERS SHOWN ON THESE DRAWINGS WITHOUT WRITTEN PERMISSION FROM THE CHIEF ENGINEER AND GENERAL MANAGER OF THE COUNTY SANITATION DISTRICTS.

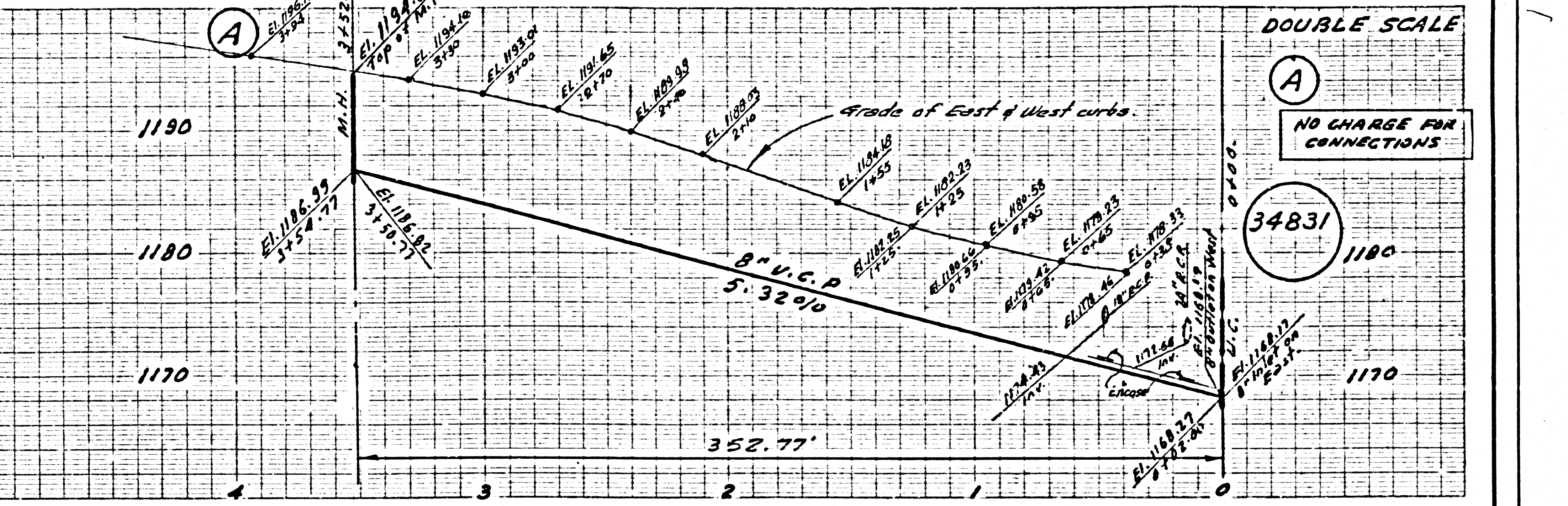
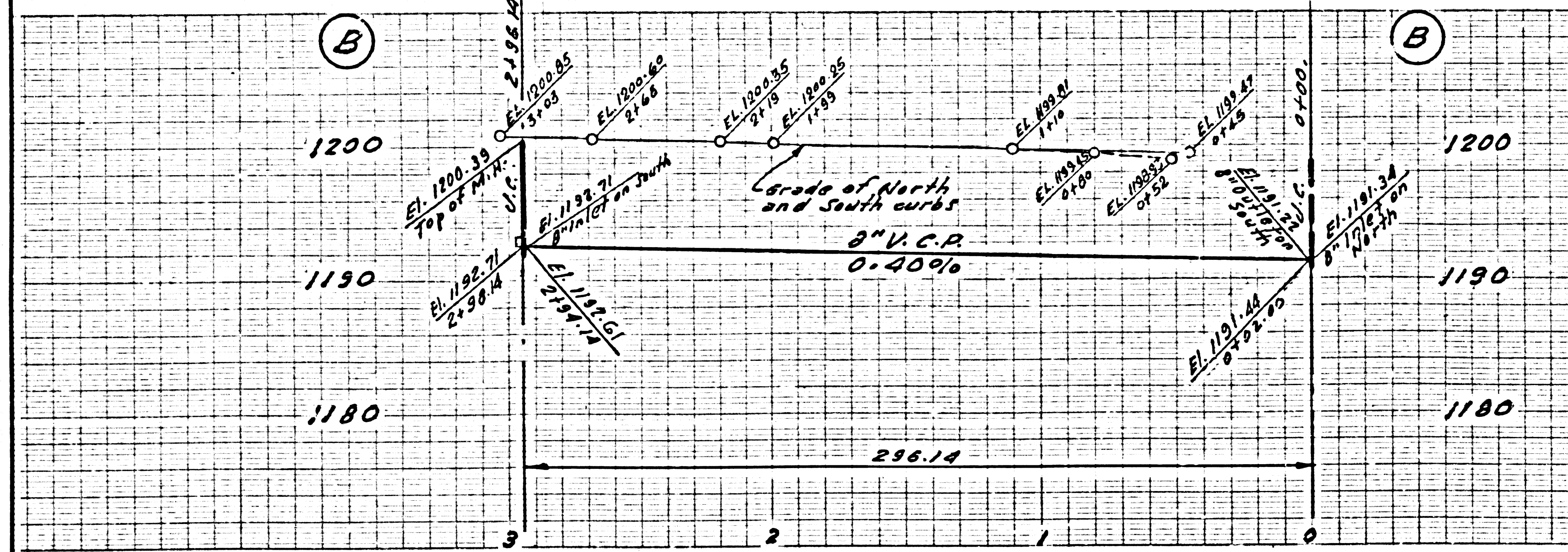
NO CHARGE FOR CONNECTIONS  
*of Curtis* 12-11-62



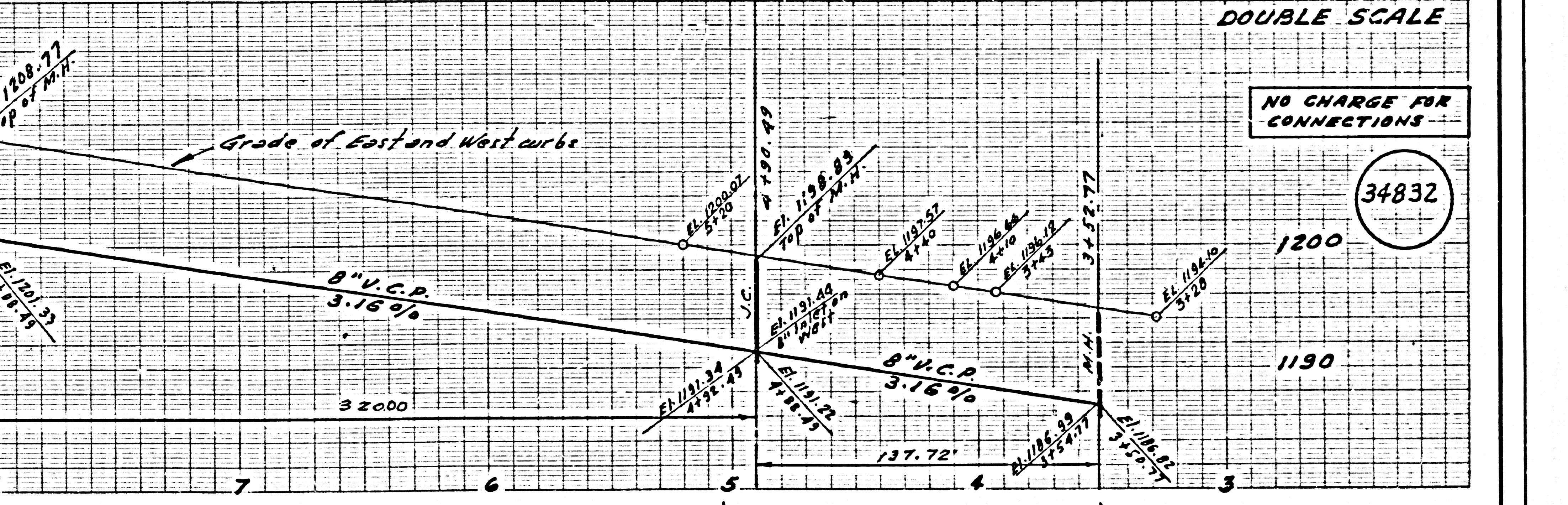
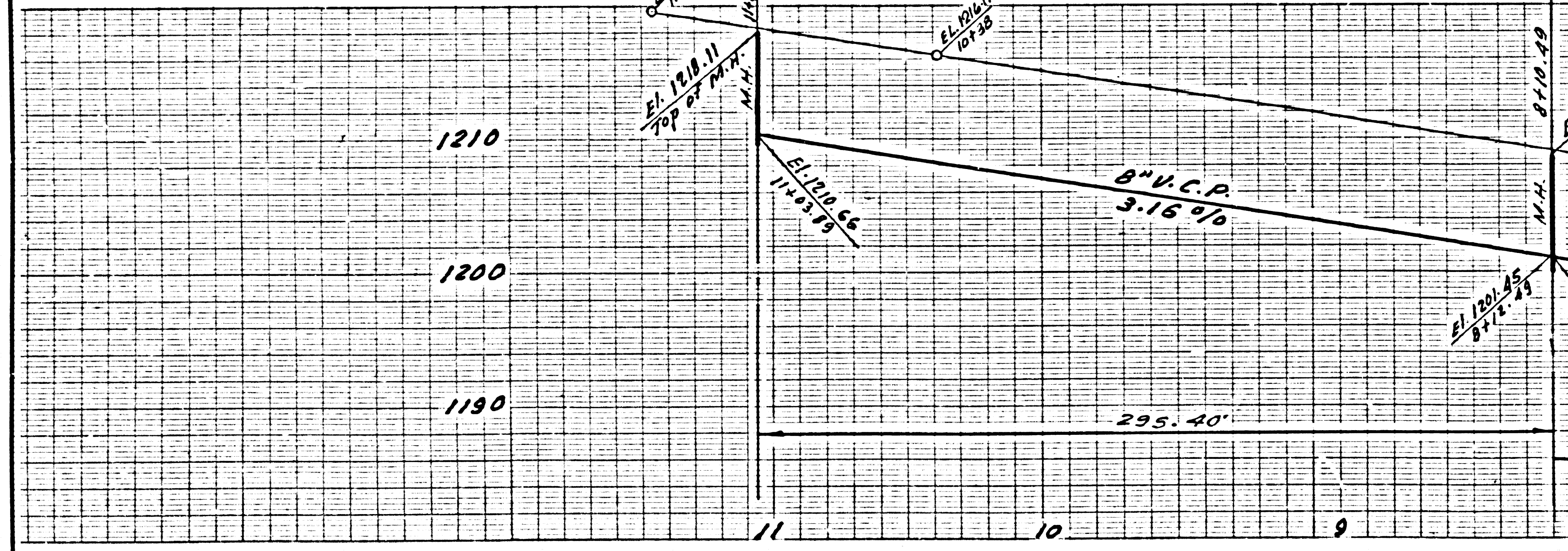
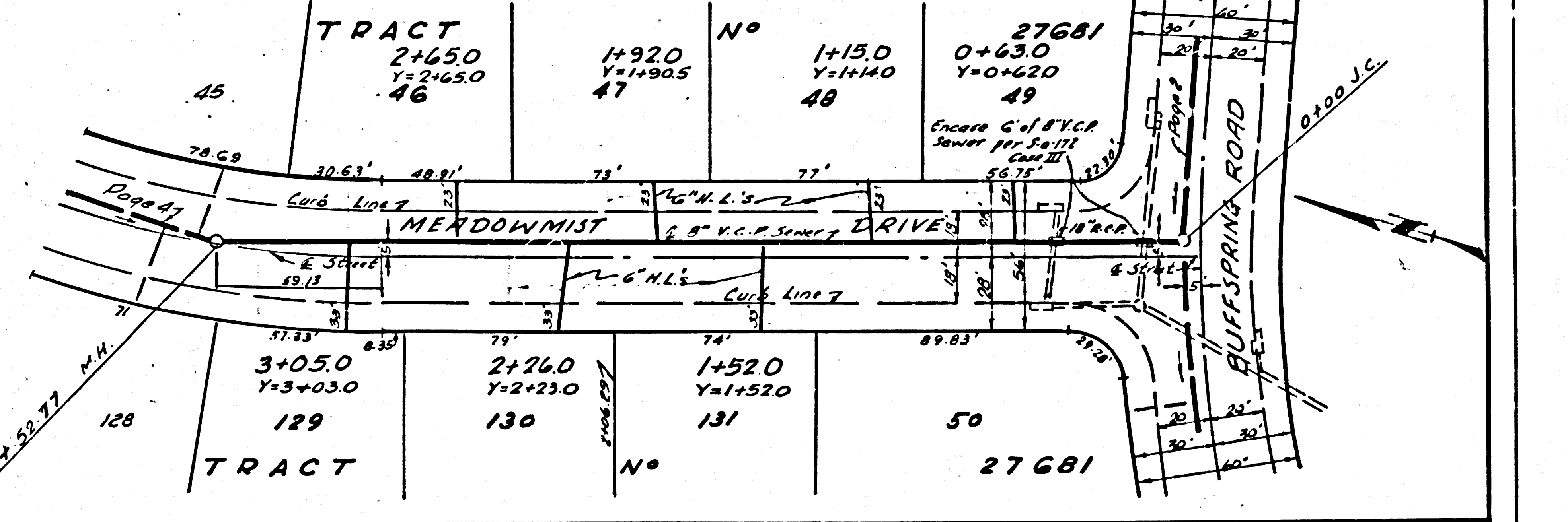
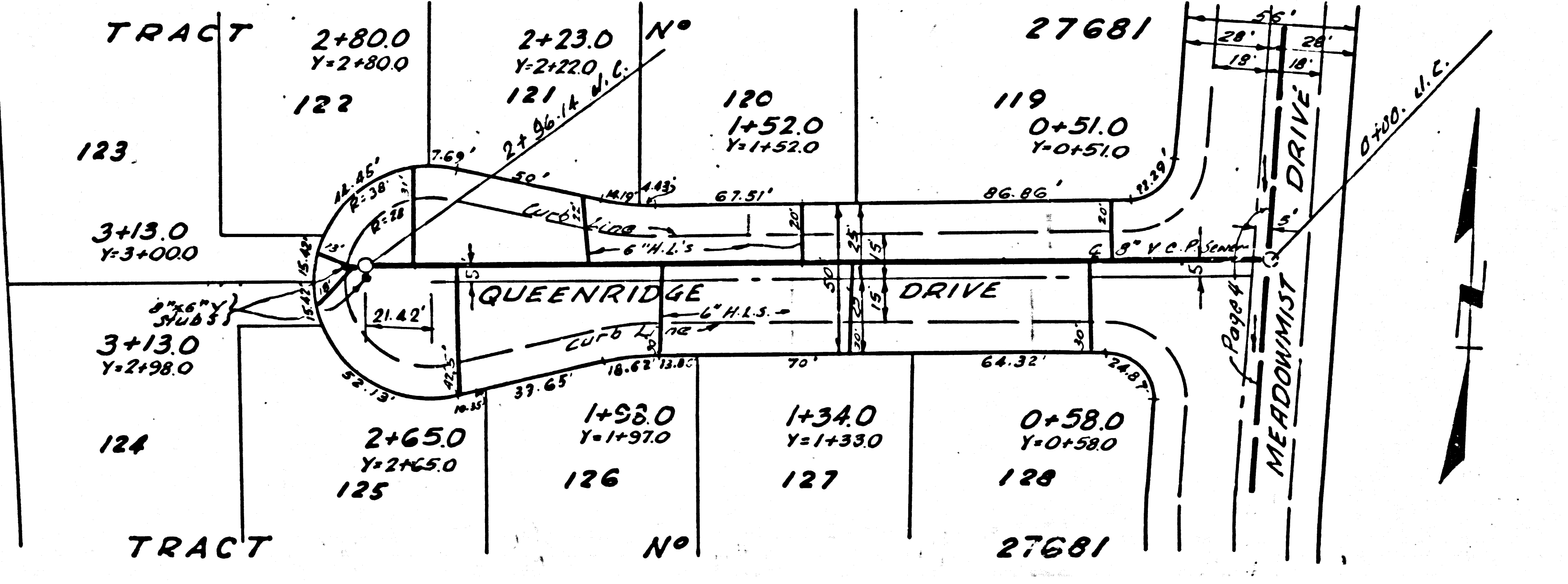
P.C. 6405 PAGE 2  
DOUBLE SCALE

NO CHARGE FOR CONNECTIONS

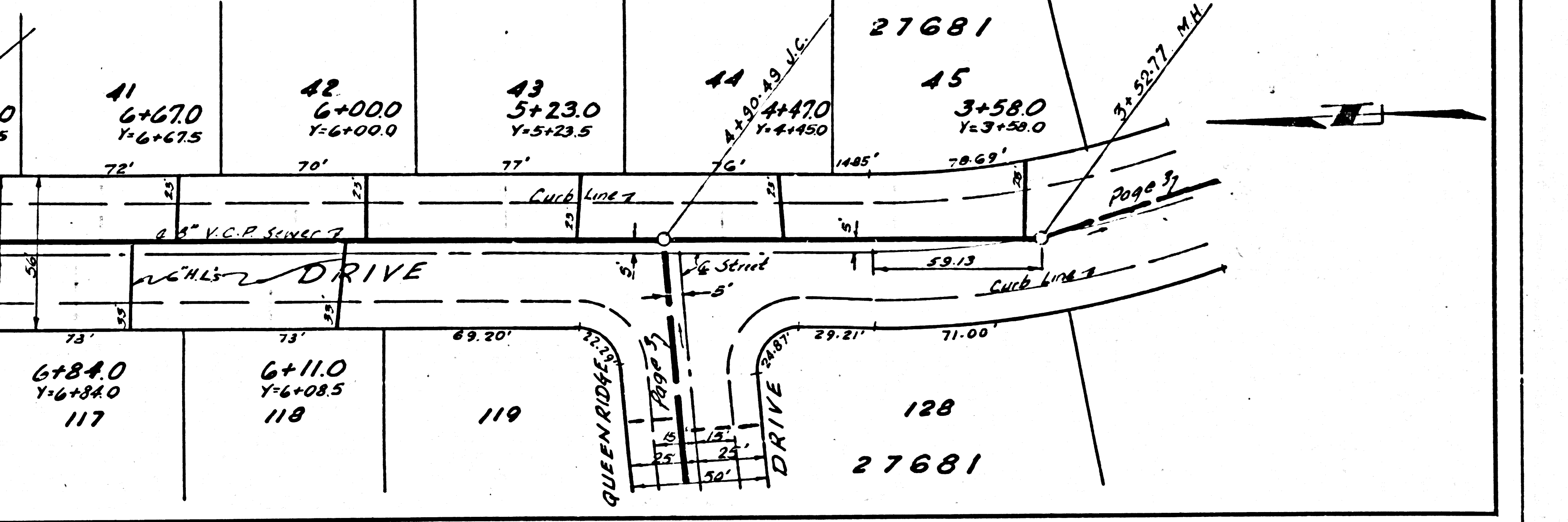
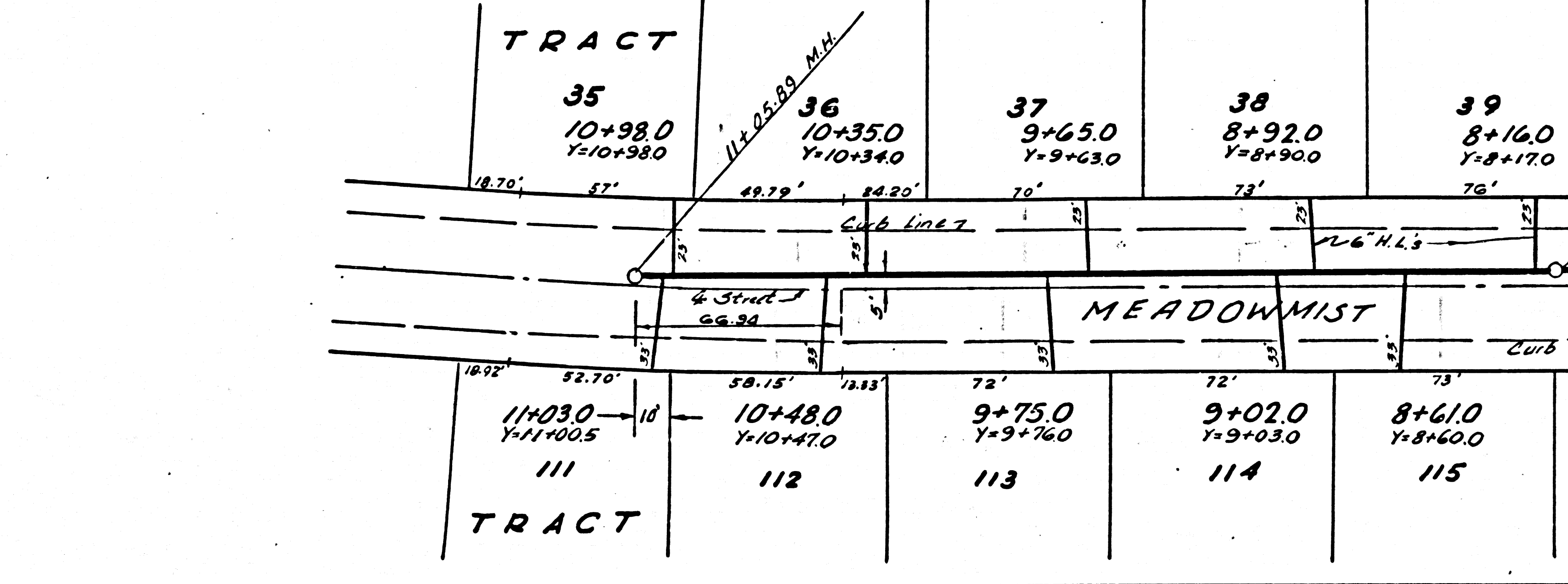
34830



DOUBLE SCALE  
NO CHARGE FOR CONNECTIONS  
34831

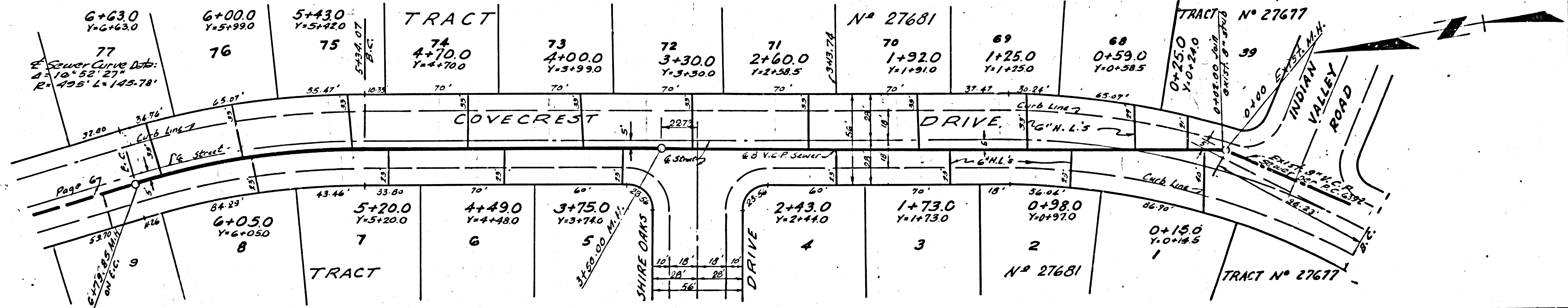
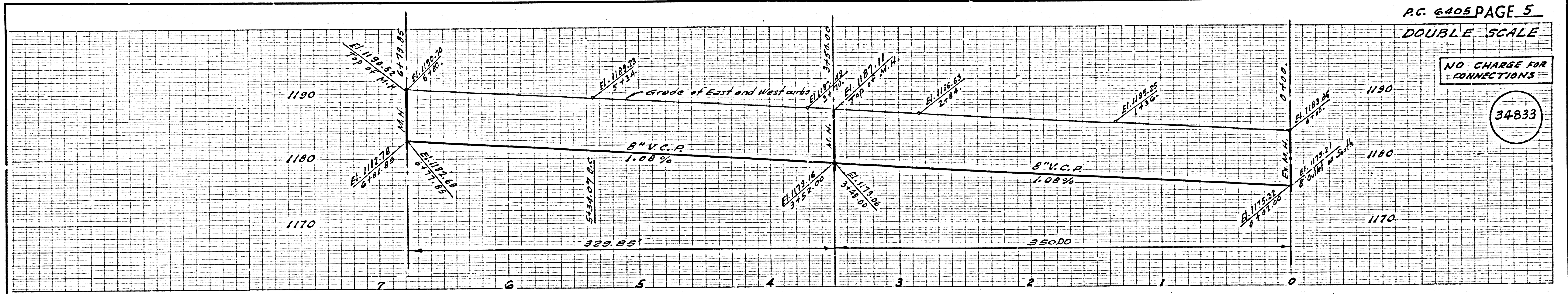


DOUBLE SCALE  
NO CHARGE FOR CONNECTIONS  
34832



NO CHARGE FOR CONNECTIONS

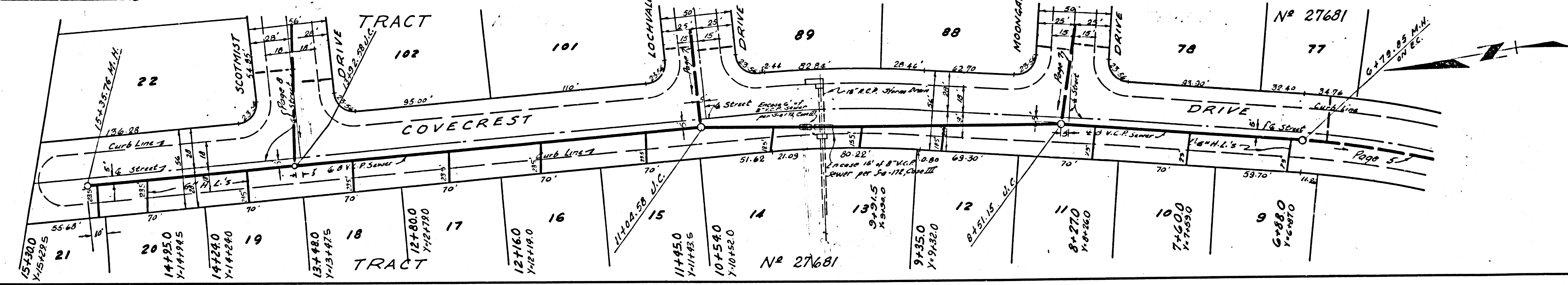
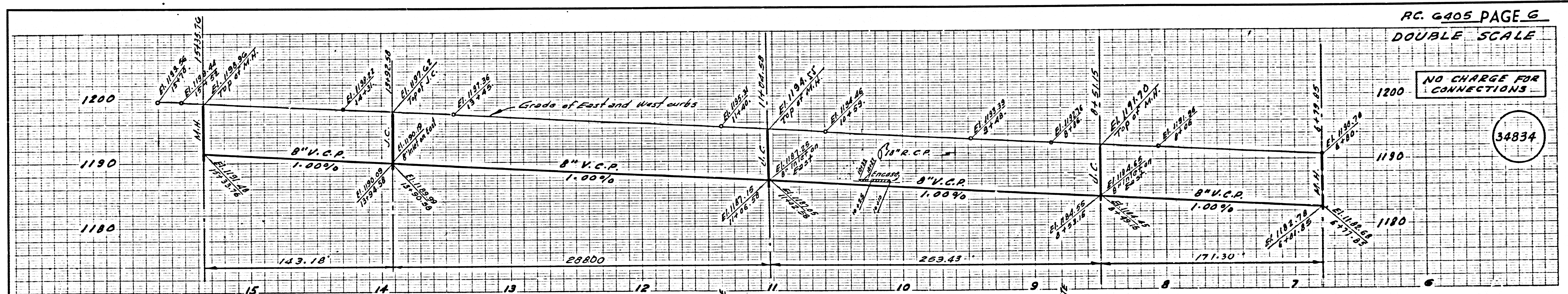
34833



90.7  
18

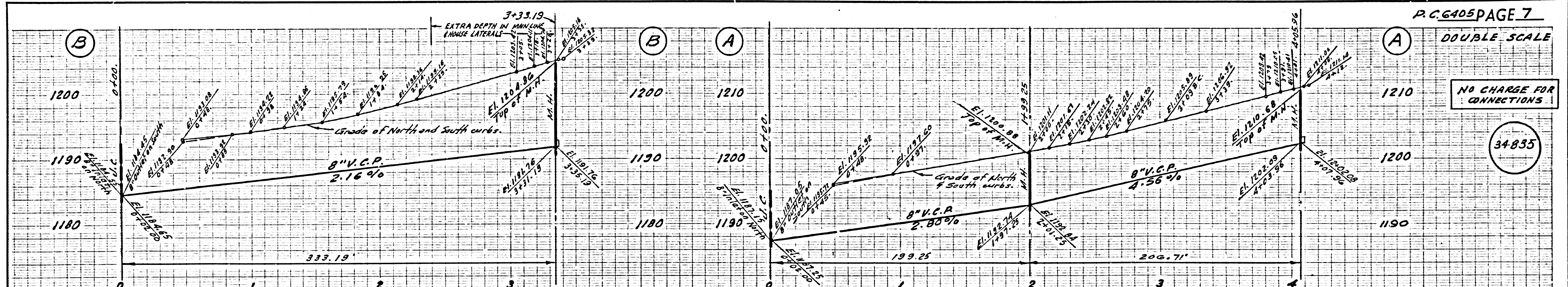
NO CHARGE FOR CONNECTIONS

34834



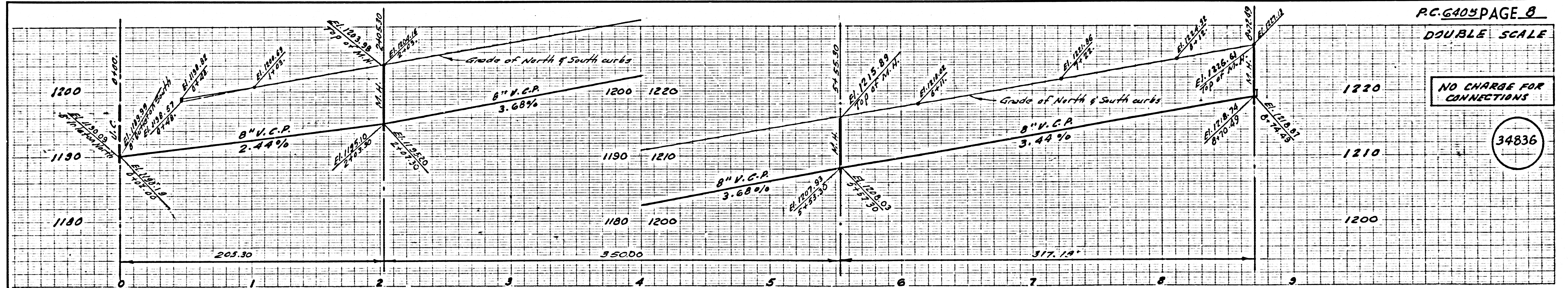
NO CHARGE FOR CONNECTIONS

34835



NO CHARGE FOR CONNECTIONS

34836



DOUBLE SCALE

NO CHARGE FOR CONNECTIONS

34837

