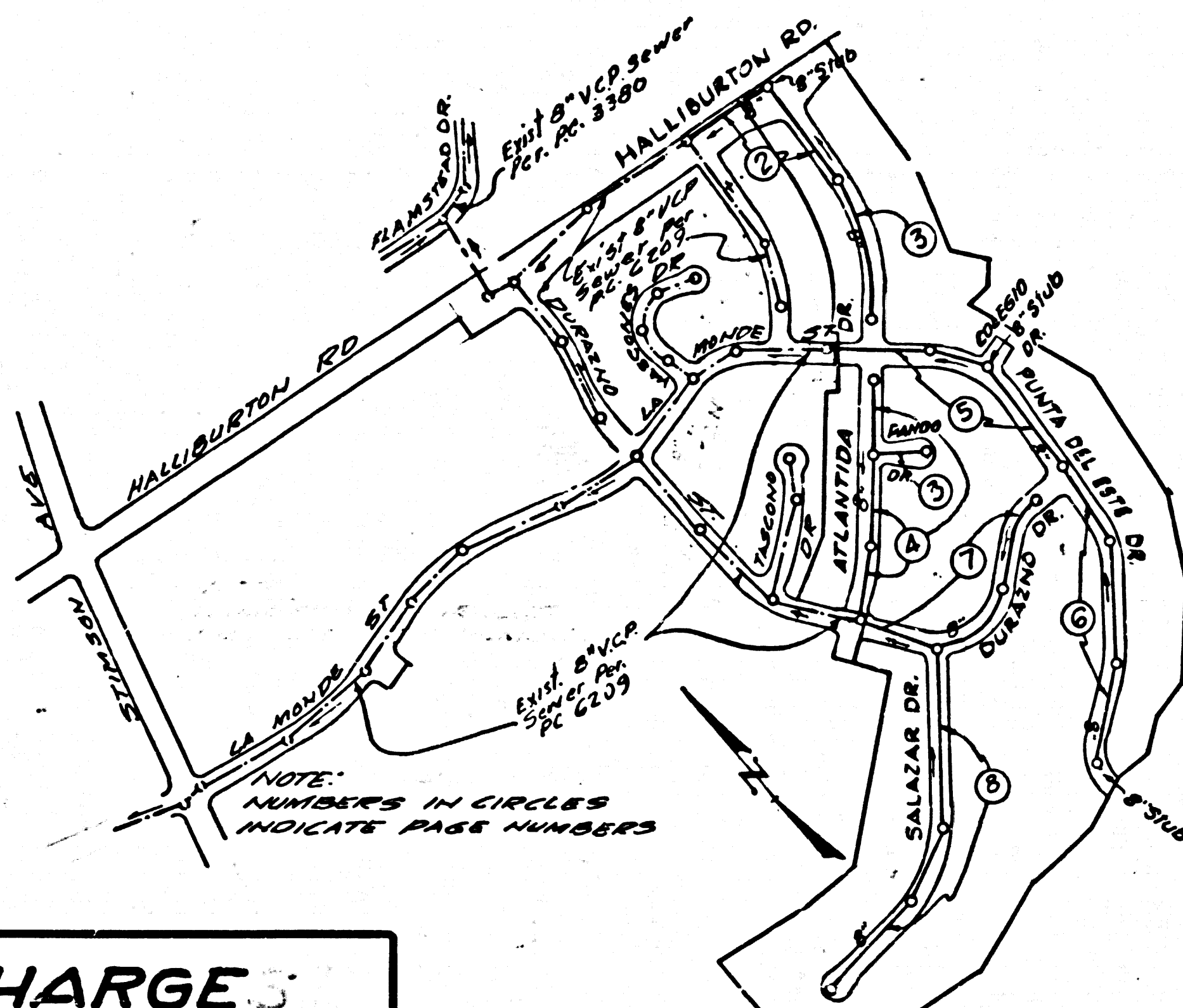


DOUBLE SCALE VERTICALLY
PUENTE BLDG. DIST. NO. 2

PROFILE ALIGNMENT AND GRADE OF P.C. 6406
SANITARY SEWERS PAGE 1
TO BE CONSTRUCTED IN I.N. 0359.36

BENCH MARK
56 1623-A El. 405.237
Rd. Dupl. Bldg. 17 1/2' N. Curb 1' East
of B.C.R. at N.E. Corner of Hacienda
Blvd. & Halliburton Rd. 40' x N.
& 72' x E. of 1/2' Inters. (Base Line) 1955 Adj.



NO CHARGE FOR CONNECTIONS
A. Rojas 1-11-63

NO CONNECTIONS FOR THE DISPOSAL OF INDUSTRIAL WASTES SHALL BE MADE TO SEWERS SHOWN ON THESE DRAWINGS WITHOUT WRITTEN PERMISSION FROM THE CHIEF ENGINEER AND GENERAL MANAGER OF THE COUNTY SANITATION DISTRICTS.

- NOTES:
1. PROVIDE STAKES ON THE PROPERTY LINE OR PROPERTY LINES PRODUCED AT RIGHT ANGLES TO THE SEWER LINE AT THE CENTER LINE OF EACH MANHOLE.
 2. NO REPRESENTATIVE OF THE COUNTY ENGINEER WILL SURVEY OR LAY OUT ANY PORTION OF THE WORK.
 3. THE OWNER OR HIS AUTHORIZED REPRESENTATIVE SHALL FURNISH THE COUNTY ENGINEER WITH GRADE SHEETS AND STATIONING FOR ALL HOUSE LATERALS AND Y BRANCHES AND SHALL PROVIDE STAKES FOR THEM AT THEIR PROPER LOCATIONS WITH STATIONING PLAINLY MARKED. ANY CHANGE IN LOCATION SHALL BE REQUESTED IN WRITING BY THE OWNER OR HIS REPRESENTATIVE.
 4. THE PRIVATE ENGINEER SHALL FURNISH THE HOUSE LATERAL DEPTH AT THE PROPERTY LINE BELOW THE TOP OF CURB ELEVATION FOR EACH HOUSE LATERAL ON THE GRADE SHEET.
 5. NO REVISIONS SHALL BE MADE IN THESE PLANS WITHOUT THE APPROVAL OF THE COUNTY ENGINEER.
 6. USE STANDARD MANHOLE FRAMES AND COVERS, S-117.
 7. USE EXTRA STRENGTH PIPE. ALL PIPE STANDARD DEPTH, EXCEPT AS NOTED.
 8. USE MECHANICAL COMPRESSION JOINTS FOR ALL V.C.P. JOINTS PER SPECS. SECS. 16, 48 & 49.
 9. RESURFACE ALL TRENCH WITHIN PAVED AREA TO MEET L.A. COUNTY ROAD DEPT. OR CALIF. STATE HIGHWAY REQUIREMENTS IN ACCORDANCE WITH PERMITS.
 10. HOUSE LATERALS TO BE CONSTRUCTED WITH INVERTS AT PROPERTY LINE SIX FEET BELOW CURB GRADE.
 11. MANHOLES SHALL BE BRICK SEWER STRUCTURES PER S-0-104. PRE-CAST CONCRETE MANHOLES PER S-0-155 OR S-0-173 MAY BE USED AS AN ALTERNATE IN LOCATIONS APPROVED BY THE COUNTY ENGINEER.
 12. FOR ALLOWABLE LEAKAGE TEST USE FORMULA NO. 2, SPECS. SEC. 84.
 13. MANHOLE TOPS IN UNIMPROVED RIGHTS-OF-WAY TO BE SIX INCHES ABOVE FINISHED GRADE.
 14. THE CONTRACTOR SHALL NOTIFY THE CONSTRUCTION DIVISION BY TELEPHONE, MADISON 3-474, EXT. 111 AT LEAST TWENTY-FOUR HOURS BEFORE STARTING ANY WORK UNDER THIS CONTRACT.
 15. STANDARD SPECIFICATIONS DATED MAY 26, 1962 APPLY IN THE CONSTRUCTION OF THIS PROJECT.
 16. "SEWERS IN FILLED GROUND" - COMPACTION
 - a) NO CONSTRUCTION WILL BE PERMITTED IN FILLED AREAS UNLESS ACCEPTABLE CERTIFICATION IS SUBMITTED TO THE CONSTRUCTION DIVISION OF THE COUNTY ENGINEER'S DEPARTMENT THAT RELATIVE COMPACTION IS GREATER THAN 80%.
 - b) IF COMPACTION IS LESS THAN 80%, THE SEWER MUST BE CRADLED AS SHOWN ON THE PLANS PER S-0-186 OR HAVE A SPECIAL BASE COURSE PER S-0-173 CASE III. SPECIAL MANHOLE BASES MUST BE INSTALLED PER S-0-123 AS INDICATED ON THE PLANS.
 - c) IF COMPACTION IS GREATER THAN 80% BUT NOT CRADLING NOR SPECIAL MANHOLE BASES WILL BE REQUIRED.
 17. ALL HOUSE LATERALS SHALL BE CONSTRUCTED IN A STRAIGHT ALIGNMENT AT RIGHT ANGLES FROM THE MAIN LINE SEWER EXCEPT AS SHOWN ON THE PLANS. HOUSE LATERALS FROM CHIMNEYS SHALL NOT HAVE AN ANGLE LESS THAN 45° WITH THE MAIN LINE SEWER.
 18. IF A POWER POLE IS WITHIN THREE FEET OF THE SEWER THE SEWER SHALL BE ENCASED PER S-0-172 CASE III TWO FEET ON EITHER SIDE FROM THE POINT OF INTERFERENCE.
 19. IF DURING THE COURSE OF CONSTRUCTION IT IS DETERMINED THAT THERE IS LESS THAN FOUR FEET OF COVER OVER THE TOP OF A MAIN LINE OR HOUSE LATERAL V.C.P. SEWER WHICH IS NOT INDICATED ON THE PLANS, THE PIPE SHALL BE ENCASED PER S-0-172 CASE III UNLESS OTHERWISE APPROVED BY THE COUNTY ENGINEER.

TRACT No 27172
PRIVATE CONTRACT NO. 6406

W.S. 38
4 SHEETS; 8 PAGES
SCALE: VERT. 1"=8'
HORIZ. 1"=40'
APRIL 9, 1962
PREPARED IN THE OFFICES OF
AMCO ENGINEERS
8544 W. OLYMPIC BLVD. B.H.
By: J. M. Arroyo 4-9-62
REG. E. NO. 11467
FOR LEGEND SEE PLAN NO. S-A-64

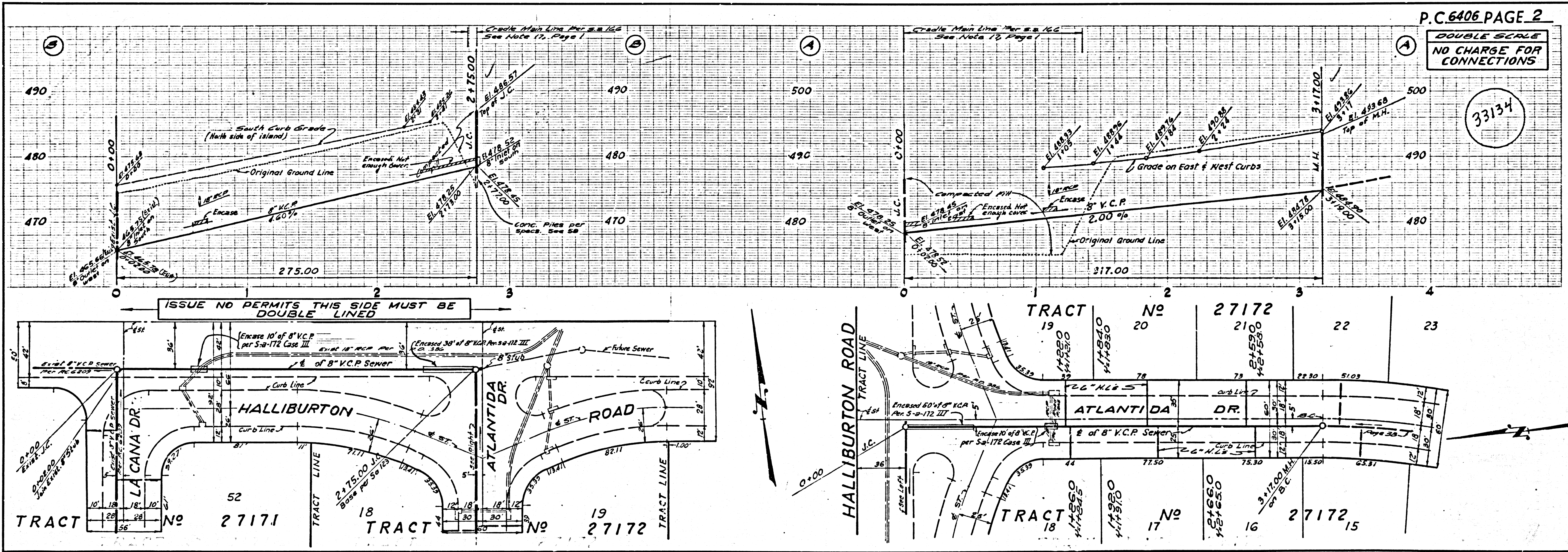
33133

NOTE:
GRADES TO WHICH THIS IMPROVEMENT IS TO BE CONSTRUCTED ARE SHOWN ON PLANS AND PROFILES. GRADE POINTS FOR TOP OF CURBS, CENTER LINE OF STREETS, OR CENTER LINE OF ALLEYS ARE SHOWN BY CIRCLES ON PROFILES AT ALL POINTS BETWEEN DESIGNATED POINTS THE GRADE SHALL BE ESTABLISHED SO AS TO CONFORM TO A STRAIGHT LINE DRAWN BETWEEN SAID DESIGNATED POINTS.
ELEVATIONS ARE IN FEET ABOVE U.S.C. & G.S. SEA LEVEL DATUM OF 1929.
THIS DRAWING AND THE DATA HEREON ARE HEREBY MADE A PART OF THE SPECIFICATIONS.
WORK SHALL BE CONSTRUCTED ACCORDING TO SPECIFICATIONS ON FILE IN THE OFFICE OF THE COUNTY ENGINEER AND SHALL BE PROSECUTED ONLY IN THE PRESENCE OF THE COUNTY ENGINEER.
BEFORE WORK CAN BE STARTED, THE CONTRACTOR MUST OBTAIN A PERMIT TO EXCAVATE IN COUNTY STREETS FROM THE L.A. COUNTY ROAD DEPT., DISTRICT OFFICE NO. 10, 110 L.A. COUNTY ENGINE BLDG. 108 W. 2ND ST. L.A., SUFFICIENT TO COVER THE COST OF CONSTRUCTION INSPECTION AND RECORD PLANS.
APPROVAL OF THIS PLAN BY THE COUNTY OF LOS ANGELES DOES NOT CONSTITUTE A REPRESENTATION AS TO THE ACCURACY OF THE LOCATION OF OR THE EXISTENCE OR NON-EXISTENCE OF ANY UNDERGROUND UTILITY PIPE, OR STRUCTURE WITHIN THE LIMITS OF THIS PROJECT. THIS NOTE APPLIES TO ALL PAGES.
IF WORK IS TO BE DONE IN A STATE HIGHWAY, A PERMIT MUST BE OBTAINED FROM THE STATE OF CALIFORNIA, DIVISION OF HIGHWAYS, 120 SOUTH SPRING STREET.

COUNTY OF LOS ANGELES, CALIFORNIA
APPROVED, JOHN A. LAMBIE, COUNTY ENGINEER APPROVED, J.D. PARKHURST, CHIEF ENGINEER
BY: [Signature] AFFILIATION ENGINEER BY: [Signature] OFFICE ENGINEER
CHECKED BY: [Signature] 4-18-62
OFFICE OF COUNTY ENGINEER, REG. C. E. NO. 2464

ISSUE NO HOUSE CONNECTION PERMITS UNTIL P.C. 6209 IS ACCEPTED.

SUBMITTED [Signature] 4-18-62
SANITARY ENGINEER



P.C. 6406 PAGE 2
DOUBLE SCALE
NO CHARGE FOR CONNECTIONS

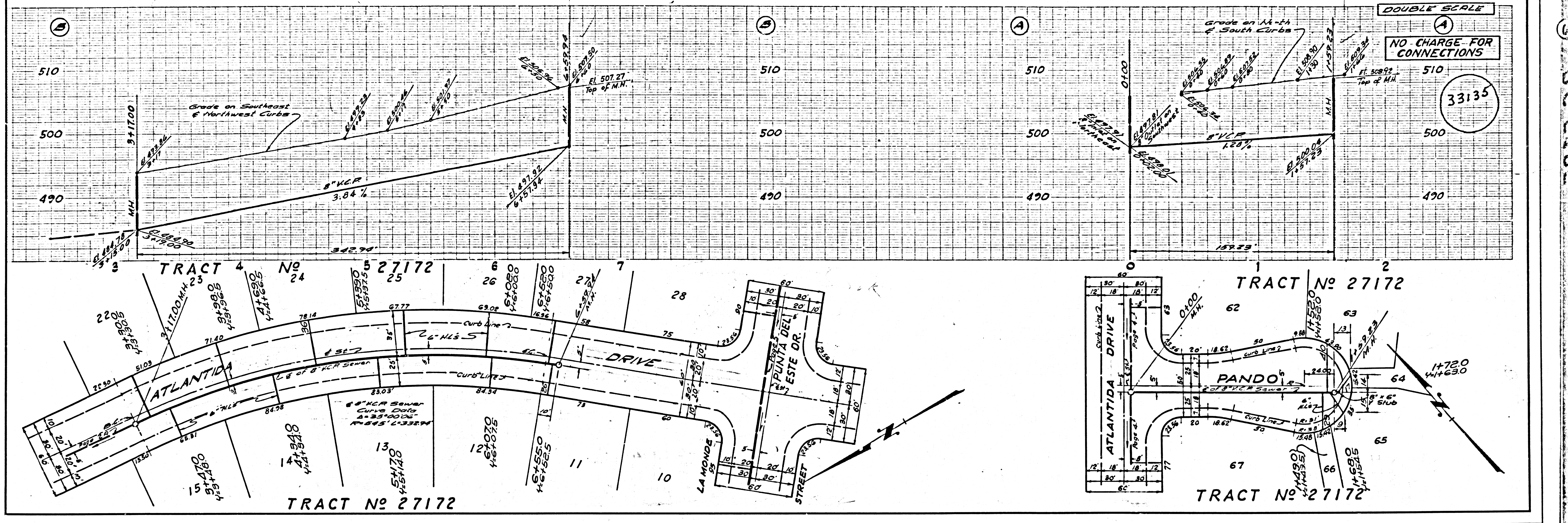
33134

ISSUE NO PERMITS THIS SIDE MUST BE DOUBLE LINED

DOUBLE SCALE

NO CHARGE FOR CONNECTIONS

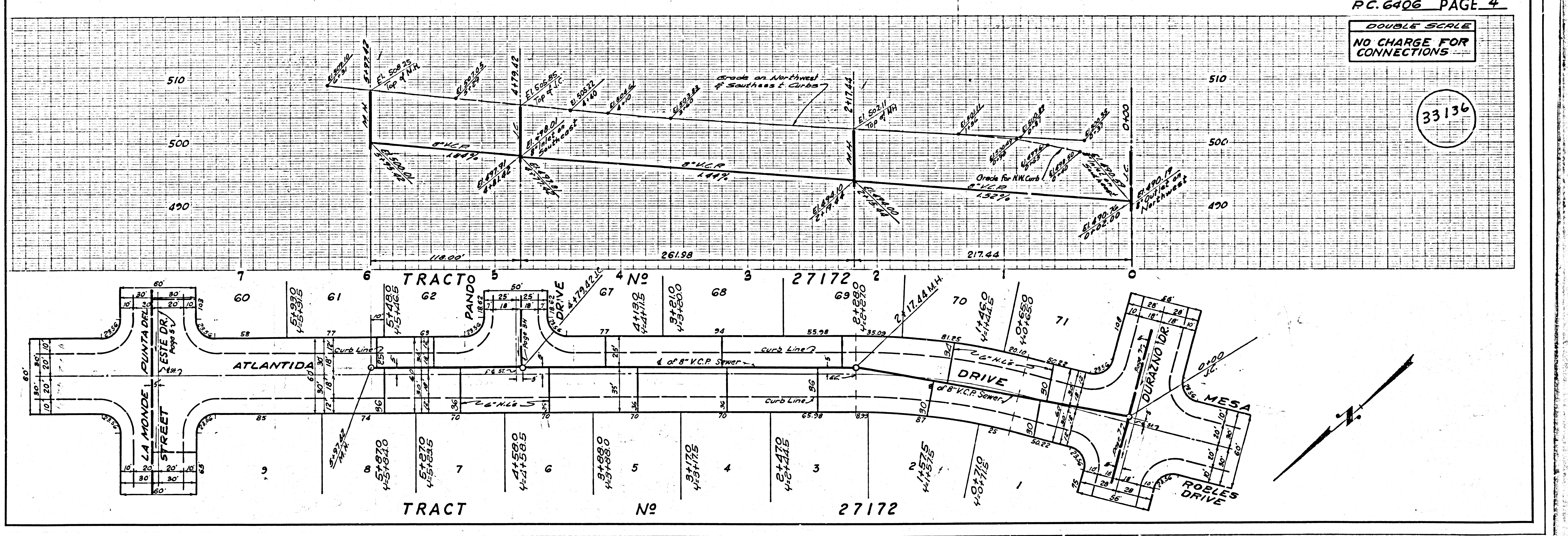
33135

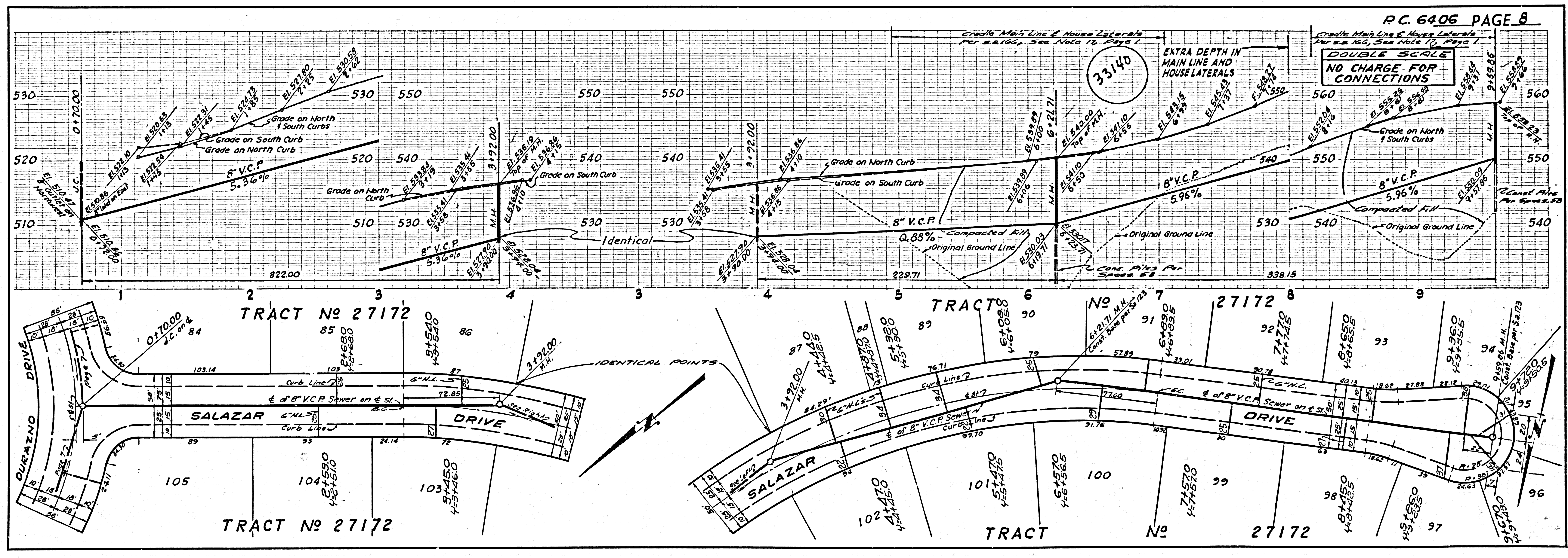
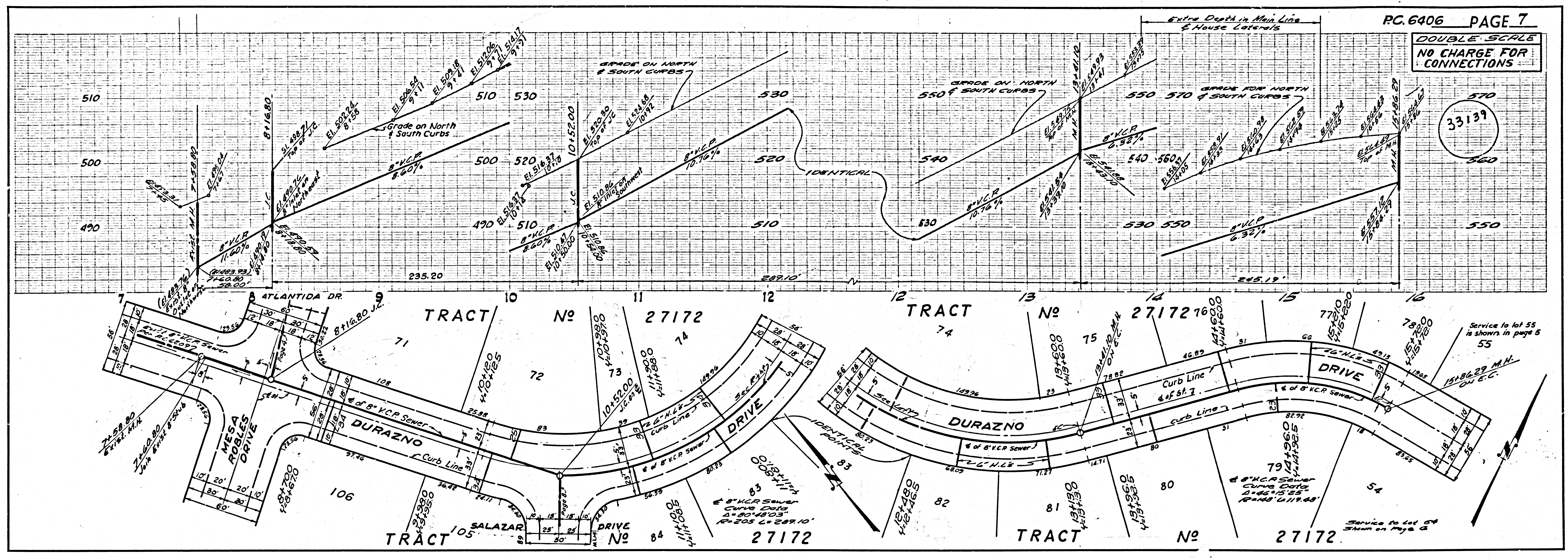


DOUBLE SCALE

NO CHARGE FOR CONNECTIONS

33136





PC 6406

IS VS S115