

B.M. S.G. 2061 ELEV. 719.998
 Top in conc. walk around fountain
 6" E. of W. edge, 2 7/8" E. of S. edge
 of the G. intersection of
 Brea Canyon Road and Diamond
 Bar Boulevard
 OTTERBEIN QUAD. 19 55

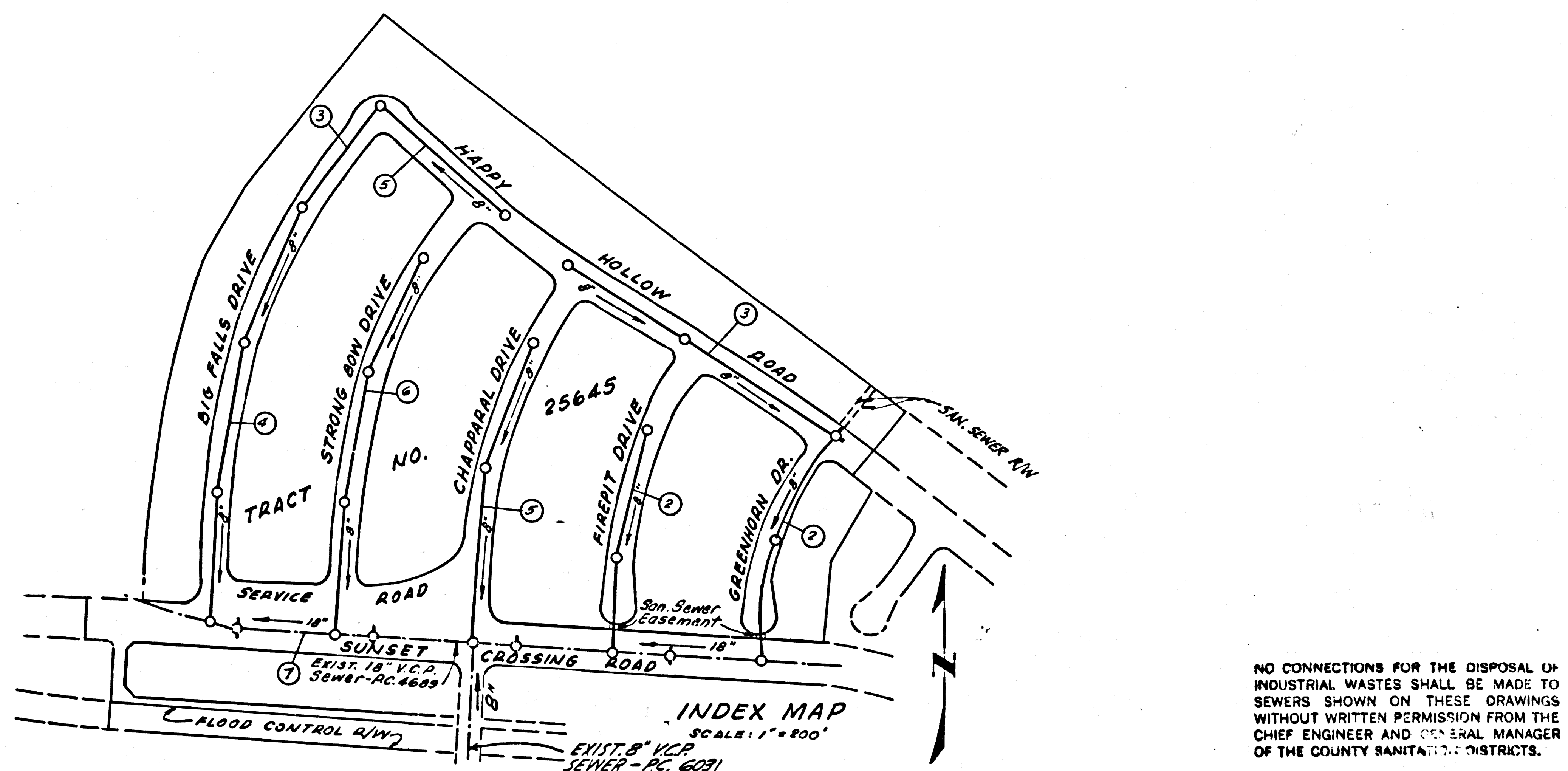
SAN DIMAS BLDG. DIST. NO. 10

PROFILE ALIGNMENT AND GRADE OF P.C. 6407
 SANITARY SEWERS PAGE 1
 TO BE CONSTRUCTED IN

TRACT N^o 25645
 PRIVATE CONTRACT NO. 6407

W.S. 39
 SHEETS: 7 PAGES
 SCALE: VERT. 1"=4'
 HORIZ. 1"=40'
 NOVEMBER, 1962
 PREPARED IN THE OFFICES OF
BAKER, PAFFORD & ASSOCIATES
 By Peter F. Pafford
 REG. C.E. NO. 12507
 FOR LEGEND SEE PLAN NO. S-A-64

34034

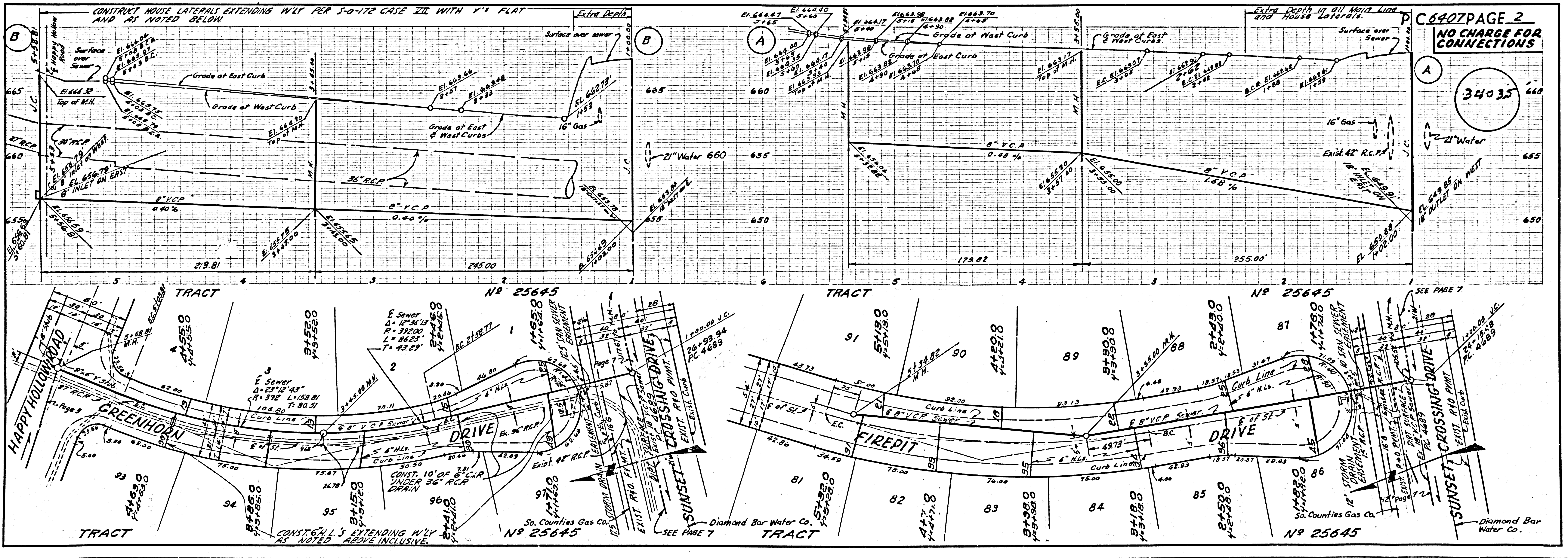


NO CONNECTIONS FOR THE DISPOSAL OF INDUSTRIAL WASTES SHALL BE MADE TO SEWERS SHOWN ON THESE DRAWINGS WITHOUT WRITTEN PERMISSION FROM THE CHIEF ENGINEER AND GENERAL MANAGER OF THE COUNTY SANITATION DISTRICTS.

- NOTES:
1. PROVIDE STAKES ON THE PROPERTY LINE OR PROPERTY LINES PRODUCED AT RIGHT ANGLES TO THE SEWER LINE AT THE CENTER LINE OF EACH MANHOLE.
 2. NO REPRESENTATIVE OF THE COUNTY ENGINEER WILL SURVEY OR LAY OUT ANY PORTION OF THE WORK.
 3. THE OWNER OR HIS AUTHORIZED REPRESENTATIVE SHALL FURNISH THE COUNTY ENGINEER WITH GRADE SHEETS AND STATIONING FOR ALL HOUSE LATERALS AND 3" BRANCHES AND SHALL PROVIDE STAKES FOR ALL HOUSE LATERAL LOCATIONS WITH STATIONING PLAINLY MARKED. ANY CHANGE IN LOCATION SHALL BE REQUESTED IN WRITING BY THE OWNER OR HIS REPRESENTATIVE.
 4. THE PRIVATE ENGINEER SHALL FURNISH THE HOUSE LATERAL DEPTH AT THE PROPERTY LINE BELOW THE TOP OF CURB ELEVATION FOR EACH HOUSE LATERAL ON THE GRADE SHEET.
 5. NO REVISIONS SHALL BE MADE IN THESE PLANS WITHOUT THE APPROVAL OF THE COUNTY ENGINEER.
 6. USE STANDARD MANHOLE FRAMES AND COVERS, 2-117, EXCEPT AS NOTED.
 7. USE STANDARD STRENGTH PIPE EXCEPT AS NOTED.
 8. USE MECHANICAL COMPRESSION JOINTS FOR ALL VCP JOINTS PER SPECS. 36 & 40 & 49.
 9. RESURFACE ALL TRENCH WITHIN PAVED AREA TO MEET L.A. COUNTY ROAD DEPT. OR CALIF. STATE HIGHWAY REQUIREMENTS IN ACCORDANCE WITH PERMITS.
 10. ENCASE FOUR FEET OF SEWER AT POINTS OF INTERFERENCE WITH POLES, CASE III, E-172.
 11. HOUSE LATERALS TO BE CONSTRUCTED WITH INTENTS AT PROPERTY LINE 6 FEET BELOW CURB GRADE EXCEPT AS NOTED.
 12. ALL STRUCTURES SHALL BE BRICK SEWER STRUCTURES, E-104, EXCEPT AS NOTED.
 13. FOR ALLOWABLE LEAKAGE TEST USE FORMULA NO. 2, SPECS. SEC. 84.
 14. MANHOLE TOPS IN UNIMPROVED RIGHTS-OF-WAY TO BE SIX INCHES ABOVE FINISHED GRADE.
 15. THE CONTRACTOR SHALL NOTIFY THE CONSTRUCTION & BROOM-DRAIN DIVISION BY TELEPHONE, MADISON 9-4741, EXT. 5121 AT LEAST TWENTY-FOUR HOURS BEFORE STARTING ANY WORK UNDER THIS CONTRACT.
 16. THE PRIVATE ENGINEER SHALL FURNISH THE COUNTY ENGINEER WITH GRADE SHEETS AND STATIONING FOR ALL HOUSE LATERALS AND Y BRANCHES AND SHALL PROVIDE STAKES FOR THEM AT THEIR PROPER LOCATIONS WITH STATIONING PLAINLY MARKED. ALL HOUSE LATERALS SHALL BE CONSTRUCTED IN A STRAIGHT ALIGNMENT AT RIGHT ANGLES FROM THE MAIN LINE SEWER EXCEPT AS SHOWN ON THE PLANS. HOUSE LATERALS FROM CHIMNEYS SHALL NOT HAVE AN ANGLE OF LESS THAN 45° WITH THE MAIN LINE SEWER. ANY CHANGE IN ALIGNMENT SHALL BE REQUESTED IN WRITING BY THE PRIVATE ENGINEER.
 17. MANHOLES SHALL BE BRICK SEWER STRUCTURES PER S-104, PRECAST CONCRETE MANHOLES PER S-135 OR S-173 MAY BE USED AS AN ALTERNATE IN LOCATIONS APPROVED BY THE COUNTY ENGINEER.
 18. USE EXTRA STRENGTH PIPE. ALL PIPE IS STANDARD DEPTH EXCEPT AS NOTED.
 19. WHERE EVER GROUNDS UNDERNEATH ARE ENCOUNTERED DURING THE CONSTRUCTION OF THE SEWER PIPE LINE, THE CONTRACTOR SHALL STOP WORK IMMEDIATELY AND NOTIFY THE COUNTY ENGINEER BY TELEPHONE, MADISON 9-4741, EXT. 5121. CASE III, TWO FEET ON EITHER SIDE FROM THE POINT OF INTERFERENCE.
 20. IF A POWER POLE IS WITHIN 3 FEET OF THE SEWER, THE SEWER SHALL BE ENCASED PER S-172, CASE III, TWO FEET ON EITHER SIDE FROM THE POINT OF INTERFERENCE.
 21. IF DURING THE COURSE OF CONSTRUCTION IT IS DETERMINED THAT THERE IS LESS THAN FOUR FEET OF COVER OVER THE TOP OF A MAIN LINE OR A HOUSE LATERAL V.C.P. SEWER, CASE III, UNLESS OTHERWISE APPROVED BY THE COUNTY ENGINEER.
 22. TOPS OF EXISTING MANHOLES WITHIN STREETS SHALL BE ADJUSTED TO GRADE OF STREET.
 23. ALL STATE AND LOCAL TRENCH SAFETY ORDERS WILL BE RIGIDLY ENFORCED.
 24. CONTRACTOR SHALL NOTIFY SOUTHERN CALIF. GAS CO., TEL. NH 51561, BEFORE WORK IS STARTED. THEY WILL MARK THE APPROX. LOCATION OF THEIR STRUCTURES IN THE FIELD.

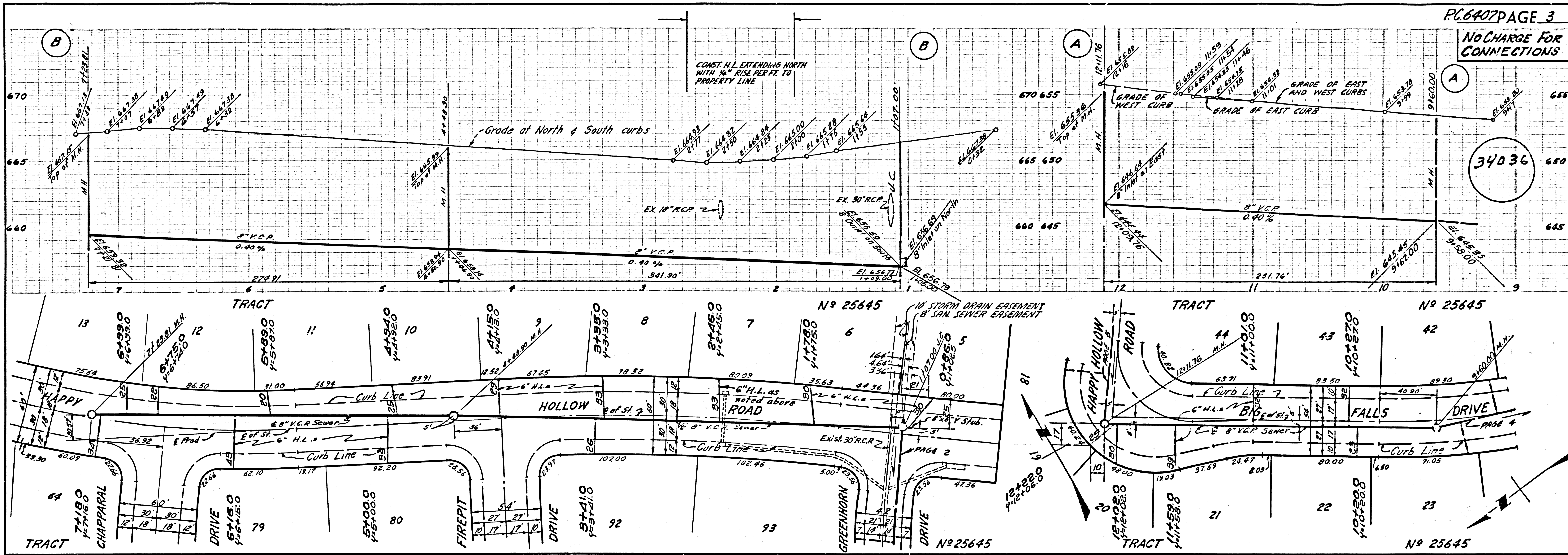
COLLECT CHARGES AS INDICATED
 P.R. Smith

NOTE:
 GRADES TO WHICH THIS IMPROVEMENT IS TO BE CONSTRUCTED ARE SHOWN ON PLANS AND PROFILE. GRADE POINTS FOR TOP OF CURB, CENTER LINE OF STREETS, OR CENTER LINE OF ALLEYS ARE SHOWN BY CIRCLES ON PROFILE AT ALL POINTS BETWEEN DESIGNATED POINTS THE GRADE SHALL BE ESTABLISHED SO AS TO CONFORM TO A STRAIGHT LINE DRAWN BETWEEN SAID DESIGNATED POINTS.
 ELEVATIONS ARE IN FEET ABOVE U.S. & G.S. SEA LEVEL DATUM OF 1929.
 THIS DRAWING AND THE DATA HEREON ARE HEREBY MADE A PART OF THE SPECIFICATIONS.
 WORK SHALL BE CONSTRUCTED ACCORDING TO SPECIFICATIONS DATED MAY 25, 1958, ON FILE IN THE OFFICE OF THE COUNTY ENGINEER. IT SHALL BE PROSECUTED ONLY IN THE PRESENCE OF THE COUNTY ENGINEER.
 BEFORE WORK CAN BE STARTED, THE CONTRACTOR MUST OBTAIN A PERMIT TO EXCAVATE IN COUNTY STREETS FROM THE L.A. COUNTY ROAD DEPT., DISTRICT OFFICE NO. 1 AND PAY A FEE TO THE COUNTY ENGINEER, ROOM 323, COUNTY ENGINEERING BUILDING, 108 W. SECOND ST. OR SAN DIMAS REGIONAL OFFICE.
 SUFFICIENT TO COVER THE COST OF CONSTRUCTION INSPECTION AND RECORD PLANS.
 APPROVAL OF THIS PLAN BY THE COUNTY OF LOS ANGELES DOES NOT CONSTITUTE A REPRESENTATION AS TO THE ACCURACY OF THE LOCATION OR THE EXISTENCE OR NON-EXISTENCE OF ANY UNDERGROUND UTILITY PIPE, OR STRUCTURE WITHIN THE LIMITS OF THIS PROJECT. THIS NOTE APPLIES TO ALL PAGES.
 IF WORK IS TO BE DONE IN A STATE HIGHWAY, A PERMIT MUST BE OBTAINED FROM THE STATE OF CALIFORNIA, DIVISION OF HIGHWAYS, 130 SOUTH SPRING STREET, LOS ANGELES, CALIFORNIA.
 COUNTY OF LOS ANGELES, CALIFORNIA
 JOHN A. LAMBIE, COUNTY ENGINEER J.D. PARKHURST, CHIEF ENGINEER
 CO. SAN. DIST. NO. 10
 APPROVED BY Rick E. Kelly ASSISTANT SANITATION ENGINEER APPROVED BY Peter F. Pafford OFFICE ENGINEER
 SUBMITTED BY Edmond W. Keigel 3-4-63 SAN DIMAS REGIONAL ENGINEER
 CHECKED BY W. J. Dwyer 3-4-63 REG. C.E. NO. 7406
 J.N. 035937

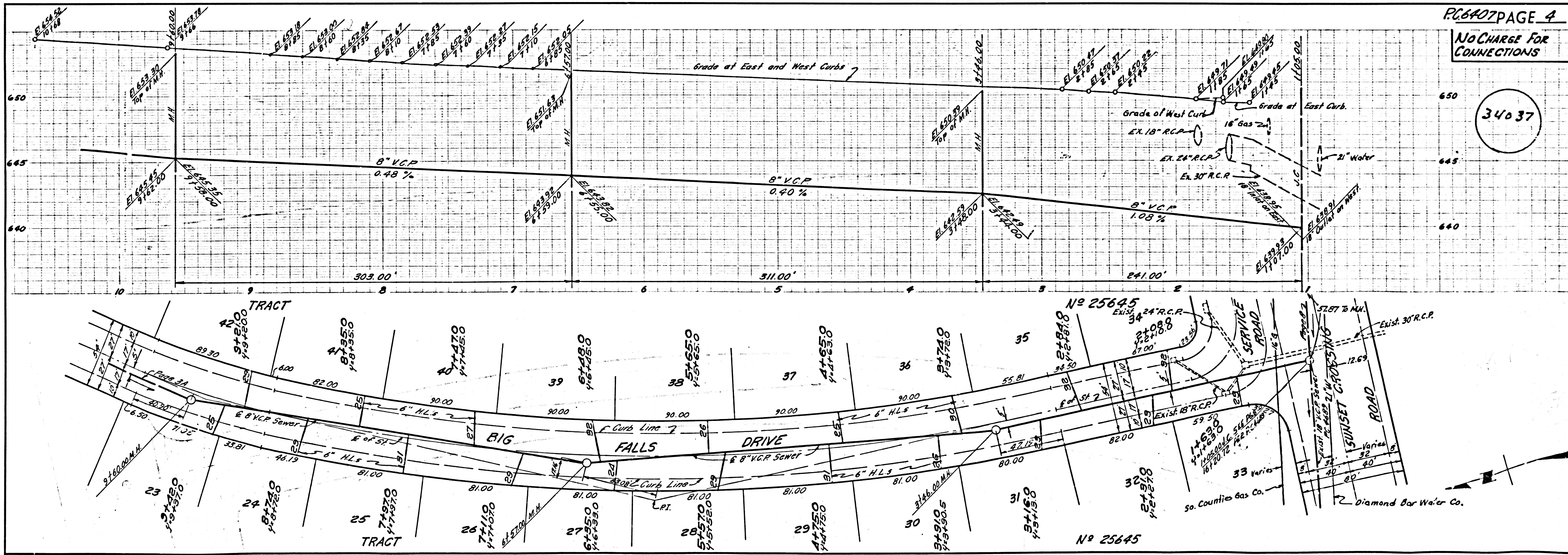


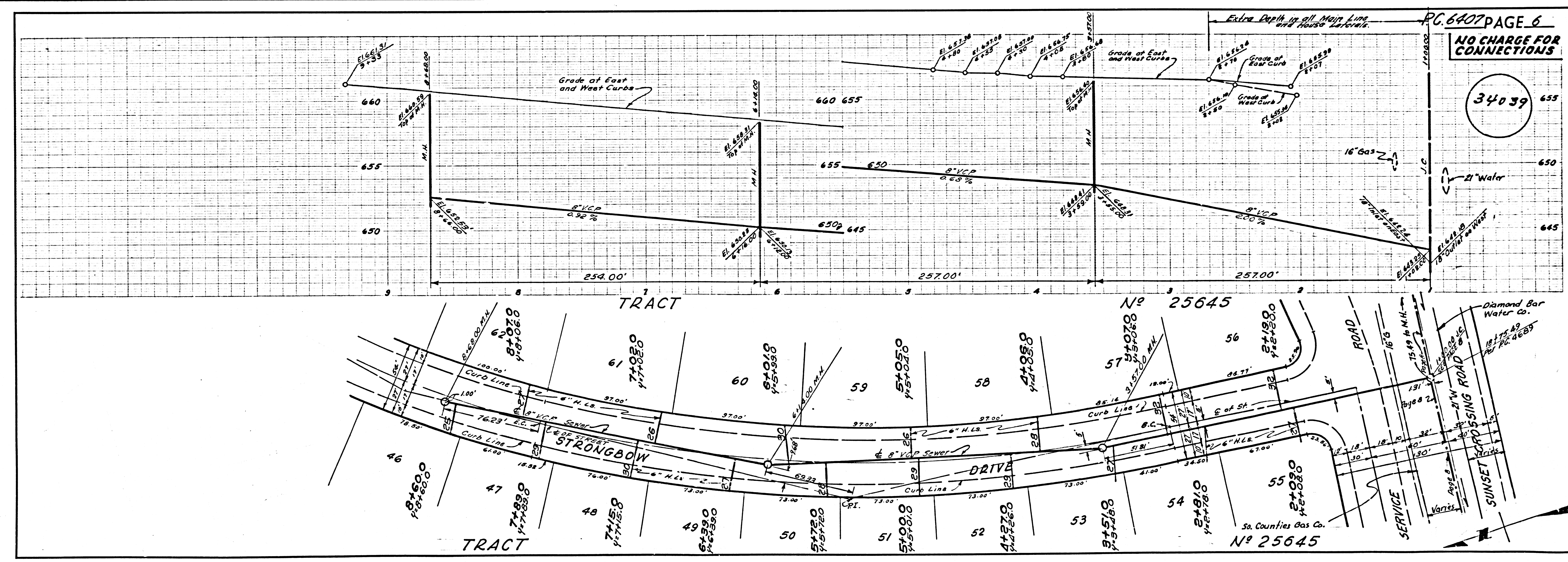
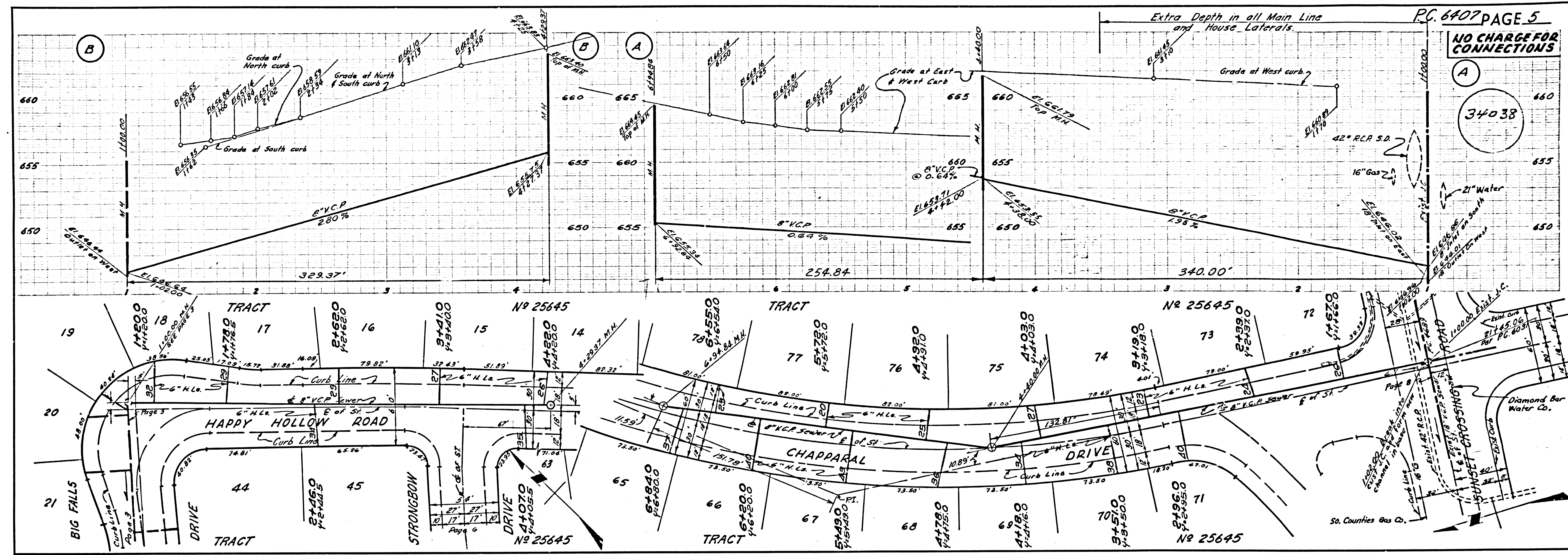
C 6407 PAGE 2
 NO CHARGE FOR CONNECTIONS
 34035

NO CHARGE FOR CONNECTIONS



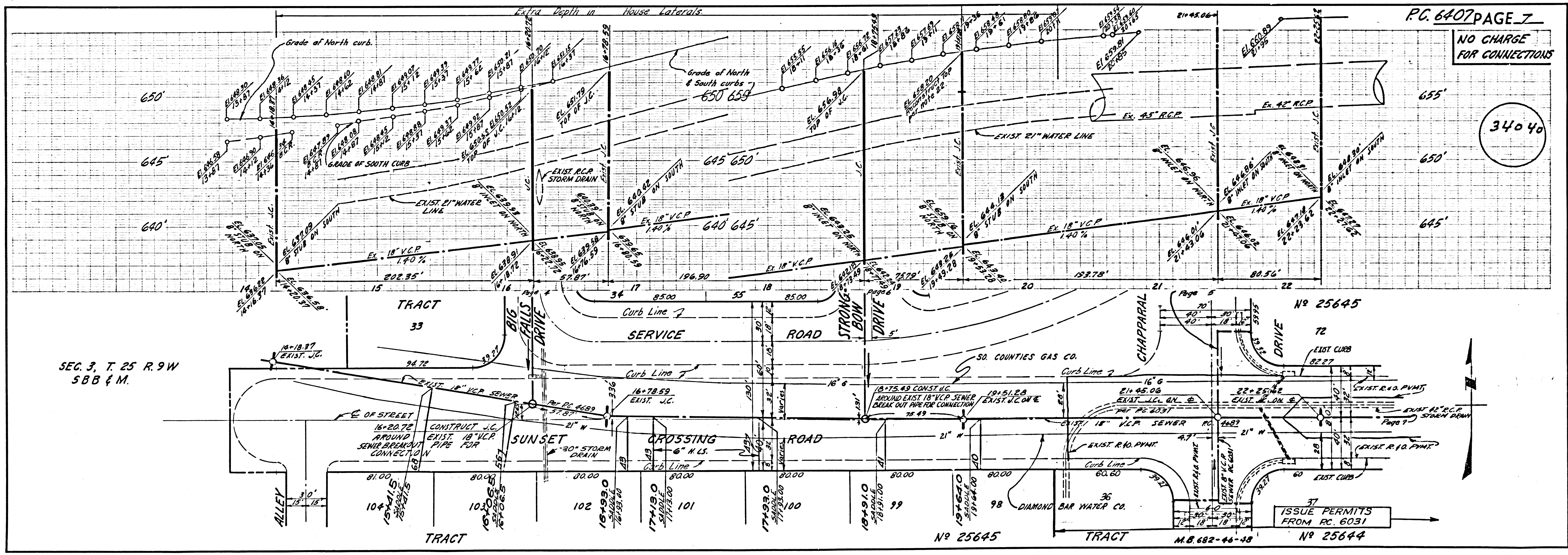
NO CHARGE FOR CONNECTIONS





NO CHARGE FOR CONNECTIONS

34040



SEC. 3, T. 25 R. 9W
SBB & M.