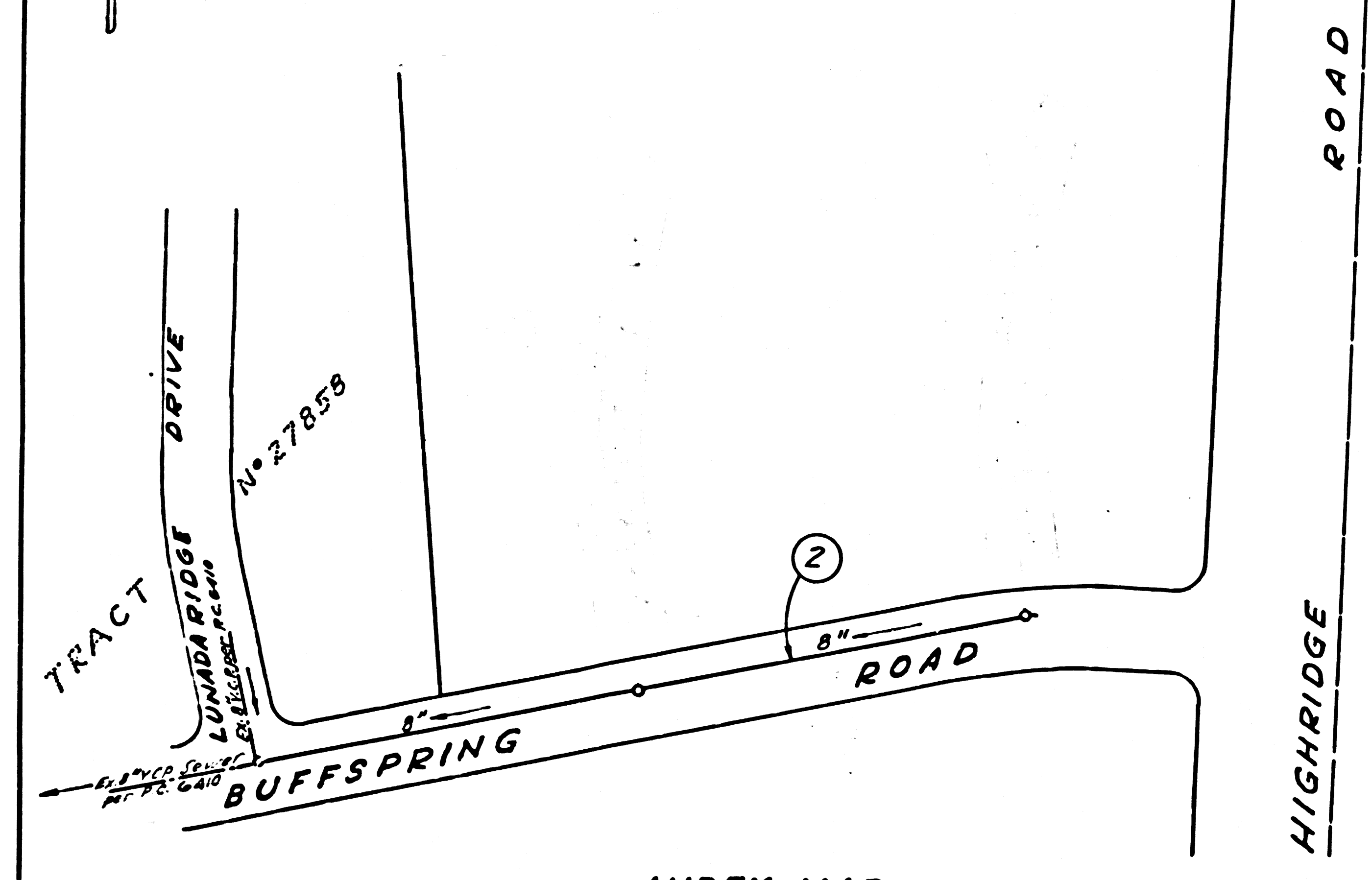


B.M. S.Y. 4374
 SPK. & L.+40 N/O C/L HAWTHORNE BLVD
 +4075' W/O C/L SILVER SPUR RD.+100' W/O
 C/L GRAYLAKE RD. EL. 1093.022.



INDEX MAP
 P.C. 6408 SCALE: 1/2"=100'

DATE	REVISIONS	BY
7/10/63	Revised location of manhole locations	E. Hughes
7/15/63	Revised labels	E. Hughes
5/10/64	Eliminate Coping Dr.	E. Hughes
	Eliminate Rockrest Dr.	E. Hughes
	Prop. No. 3237 abandoned	Ralph A. ...
		6/22/64

NO CONNECTIONS FOR THE DISPOSAL OF INDUSTRIAL WASTES SHALL BE MADE TO SEWERS SHOWN ON THESE DRAWINGS WITHOUT WRITTEN PERMISSION FROM THE CHIEF ENGINEER AND GENERAL MANAGER OF THE COUNTY SANITATION DISTRICTS.

ISSUE NO HOUSE CONNECTION PERMITS UNTIL P.C. 6392, 6405 & 6410 HAVE BEEN ACCEPTED.

DOUBLE SCALE
LOMITA BLDG. DIST. NO. 12

PROFILE ALIGNMENT AND GRADE OF **P.C. 6408**
SANITARY SEWERS PAGE 1
 TO BE CONSTRUCTED IN
BUFFSPRING ROAD

PRIVATE CONTRACT NO. 6408
 W.S. 27
 1 SHEET ; 2 PAGES
 SCALE: VERT. 1"=8' DECEMBER, 1962
 HORIZ. 1"=40'
 PREPARED IN THE OFFICES OF:
BARCLAY-PEARSON Co. INC.
 BY: *Edward F. Pearson*
 REG. C. E. NO. 9793

FOR LEGEND SEE PLAN NO. S.A. 64

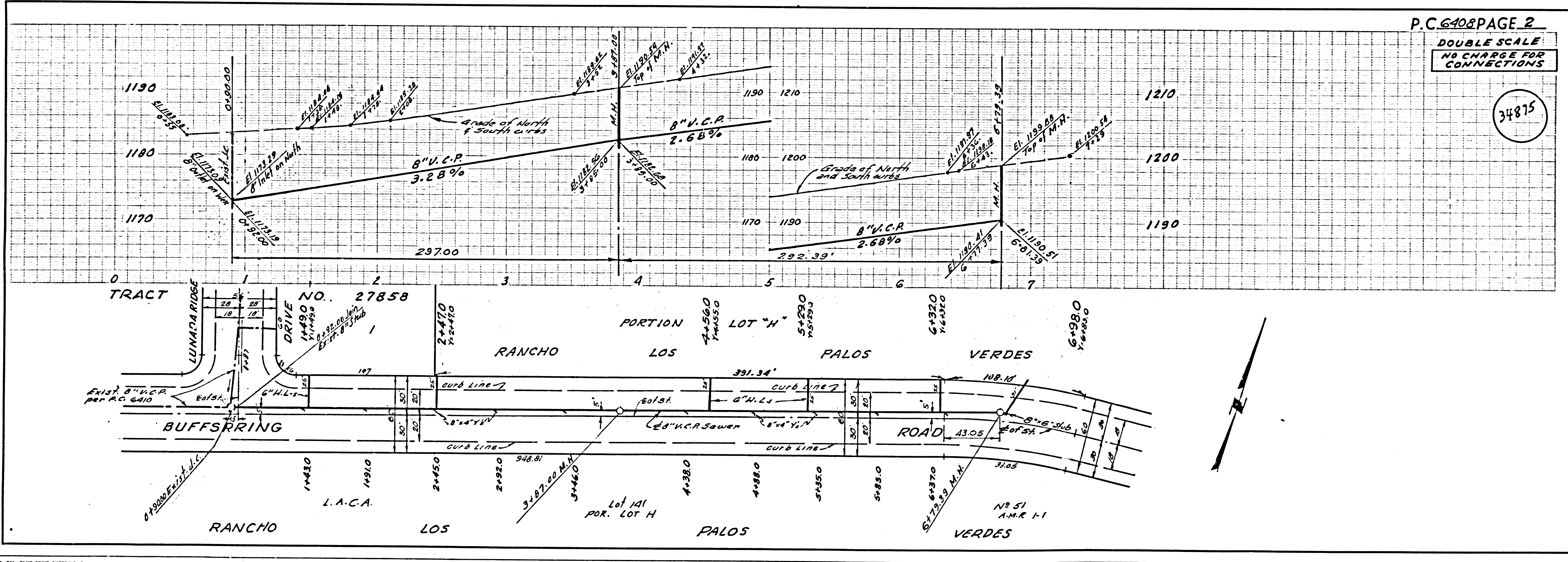
- NOTES:**
- PROVIDE STAKES ON THE PROPERTY LINE OR PROPERTY LINES PRODUCED AT RIGHT ANGLES TO THE SEWER LINE AT THE CENTER LINE OF EACH MANHOLE.
 - NO REPRESENTATIVE OF THE COUNTY ENGINEER WILL SURVEY OR LAY OUT ANY PORTION OF THE WORK.
 - THE PRIVATE ENGINEER SHALL FURNISH THE COUNTY ENGINEER WITH GRADE SHEETS AND STATIONING FOR ALL HOUSE LATERALS AND Y BRANCHES AND SHALL PROVIDE STAKES FOR THEM AT THEIR PROPER LOCATIONS WITH STATIONING PLAINLY MARKED. ANY CHANGE IN LOCATION SHALL BE REQUESTED IN WRITING BY THE PRIVATE ENGINEER. HOUSE LATERALS SHALL BE CONSTRUCTED IN A STRAIGHT ALIGNMENT AT RIGHT ANGLES TO THE MAIN LINE UNDER EXISTING CURBS OR AT OTHER PLACES AS NOTED ON THE PLANS. THE PRIVATE ENGINEER SHALL FURNISH THE HOUSE LATERAL BATH AT THE PROPERTY LINE BELOW THE TOP OF CURB ELEVATION FOR EACH HOUSE LATERAL ON THE GRADE SHEET.
 - NO REVISIONS SHALL BE MADE IN THESE PLANS WITHOUT THE APPROVAL OF THE COUNTY ENGINEER.
 - USE STANDARD MANHOLE FRAMES AND COVERS, S-117, EXCEPT AS NOTED.
 - USE 8" V.C.P. STRENGTH PIPE AND JOINTS PER SPEC. SECS. M & W, 48.
 - USE MECHANICAL COMPRESSION JOINTS FOR ALL V.C.P. JOINTS PER SPEC. SECS. M & W, 48.
 - RESURFACE ALL TRENCH WITHIN PAVED AREA TO MEET L.A. COUNTY ROAD DEPT. OR CALIF. STATE HIGHWAY REQUIREMENTS IN ACCORDANCE WITH PERMITS.
 - ENCASE FOUR FEET OF SEWER AT POINTS OF INTERFERENCE WITH POLES, CASE M, S-172.
 - HOUSE LATERALS TO BE CONSTRUCTED WITH INVERTS AT PROPERTY LINE 6 FEET BELOW CURB GRADE.
 - ALL STRUCTURES SHALL BE BRICK SEWER STRUCTURES, S-104, PRECAST CONCRETE MANHOLES PER S-8-25 M & W. S.A. 73 MAY BE USED AS AN ALTERNATE IN LOCATIONS APPROVED BY THE COUNTY ENGINEER.
 - FOR ALLOWABLE LEAKAGE TEST USE FORMULA NO. 1, SPEC. S.C. 3.
 - MANHOLE TOPS IN UNIMPROVED RIGHTS-OF-WAY TO BE SIX INCHES ABOVE FINISHED GRADE.
 - THE CONTRACTOR SHALL NOTIFY THE CONSTRUCTION DIVISION BY TELEPHONE, MADISON 9-414, EXT. 4541 AT LEAST TWENTY-FOUR HOURS BEFORE STARTING ANY WORK UNDER THIS CONTRACT.
 - IF DURING THE COURSE OF CONSTRUCTION IT IS DETERMINED THAT THERE IS LESS THAN FOUR FEET OF COVER OVER THE TOP OF A MAIN LINE OR HOUSE LATERAL V.C.P. SEWER WHICH IS NOT INDICATED ON THE PLANS, THE PIPE SHALL BE ENCASED PER S-8-172, CASE M, UNLESS OTHERWISE APPROVED BY THE COUNTY ENGINEER.
 - ALL STATE AND LOCAL TRENCH SAFETY ORDERS WILL BE RIGIDLY ENFORCED.
 - SPECIFICATIONS DATED MAY 25, 1962 APPLY IN THE CONSTRUCTION OF THIS PROJECT.
 - (A) NO CONSTRUCTION WILL BE PERMITTED IN FILLED AREAS UNLESS ACCEPTABLE CERTIFICATION IS SUBMITTED TO THE CONSTRUCTION DIVISION OF THE COUNTY ENGINEER'S DEPARTMENT THAT RELATIVE COMPACTION IS GREATER THAN 80%.
 - (B) IF COMPACTION IS LESS THAN 80% THE SEWER MUST BE CRADLED PER S-8-166.
 - (C) IF COMPACTION IS GREATER THAN 80% CRADLING AND SPECIAL P.L. BALES ARE NOT REQUIRED.
 - THE EXISTENCE AND LOCATION OF ANY UNDERGROUND UTILITY PIPES OR STRUCTURES SHOWN ON THESE PLANS ARE OBTAINED BY A SEARCH OF THE AVAILABLE RECORDS. TO THE BEST OF OUR KNOWLEDGE THERE ARE NO EXISTING UTILITIES EXCEPT AS SHOWN IN THESE PLANS. THE CONTRACTOR IS REQUIRED TO TAKE PRECAUTIONARY MEASURES TO PROTECT THE UTILITY LINES NOT OF RECORD OR NOT SHOWN ON THESE PLANS.

NOTE:
 GRADES TO WHICH THIS IMPROVEMENT IS TO BE CONSTRUCTED ARE SHOWN ON PLANS AND PROFILES. GRADE POINTS FOR TOP OF CURBS, CENTER LINE OF STREETS, OR CENTER LINE OF ALLEYS ARE SHOWN BY CIRCLES ON PROFILES AT ALL POINTS BETWEEN DESIGNATED POINTS THE GRADE SHALL BE ESTABLISHED SO AS TO CONFORM TO A STRAIGHT LINE DRAWN BETWEEN SAID DESIGNATED POINTS.
 ELEVATIONS ARE IN FEET ABOVE U.S.C. & G.S. SEA LEVEL DATUM OF 1929.
 THIS DRAWING AND THE DATA HEREON ARE HEREBY MADE A PART OF THE SPECIFICATIONS.
 WORK SHALL BE CONSTRUCTED ACCORDING TO SPECIFICATIONS ON FILE IN THE OFFICE OF THE COUNTY ENGINEER AND SHALL BE PROSECUTED ONLY IN THE PRESENCE OF THE COUNTY ENGINEER.
 BEFORE WORK CAN BE STARTED THE CONTRACTOR MUST OBTAIN A PERMIT TO EXCAVATE IN COUNTY STREETS FROM THE L.A. COUNTY ROAD DEPT., DISTRICT OFFICE NO. 2 AND PAY A FEE TO THE COUNTY ENGINEER, ROOM 310 COUNTY ENGINEERING BLDG., 108 W. 2ND ST. SUFFICIENT TO COVER THE COST OF CONSTRUCTION INSPECTION AND RECORD PLANS.
 APPROVAL OF THIS PLAN BY THE COUNTY OF LOS ANGELES DOES NOT CONSTITUTE A REPRESENTATION AS TO THE ACCURACY OF THE LOCATION OF OR THE EXISTENCE OR NON-EXISTENCE OF ANY UNDERGROUND UTILITY PIPE, OR STRUCTURE WITHIN THE LIMITS OF THIS PROJECT. THIS NOTE APPLIES TO ALL PAGES.
 IF WORK IS TO BE DONE IN A STATE HIGHWAY, A PERMIT MUST BE OBTAINED FROM THE STATE OF CALIFORNIA, DIVISION OF HIGHWAYS, 128 SOUTH SPRING STREET.

COUNTY OF LOS ANGELES, CALIFORNIA
 APPROVED, JOHN A. LAMBIE, COUNTY ENGINEER APPROVED, J.B. PARYKHURTI, CHIEF ENGINEER
 CO. SAN. DIST. NO. 5
 BY: *E. Hughes* SANITATION ENGINEER *J. Parykhurti* OFFICE ENGINEER
 CHECKED BY: *R. W. ...* 12-13-62
 OFFICE OF COUNTY ENGINEER, REG. C. E. NO. 2406

SUBMITTED *Jack C. ...*
 PALOS VERDES-CENTRAL VALLEY REGIONAL ENGINEER.

P.C. 6408 PAGE 2
DOUBLE SCALE
NO CHARGE FOR CONNECTIONS



34875