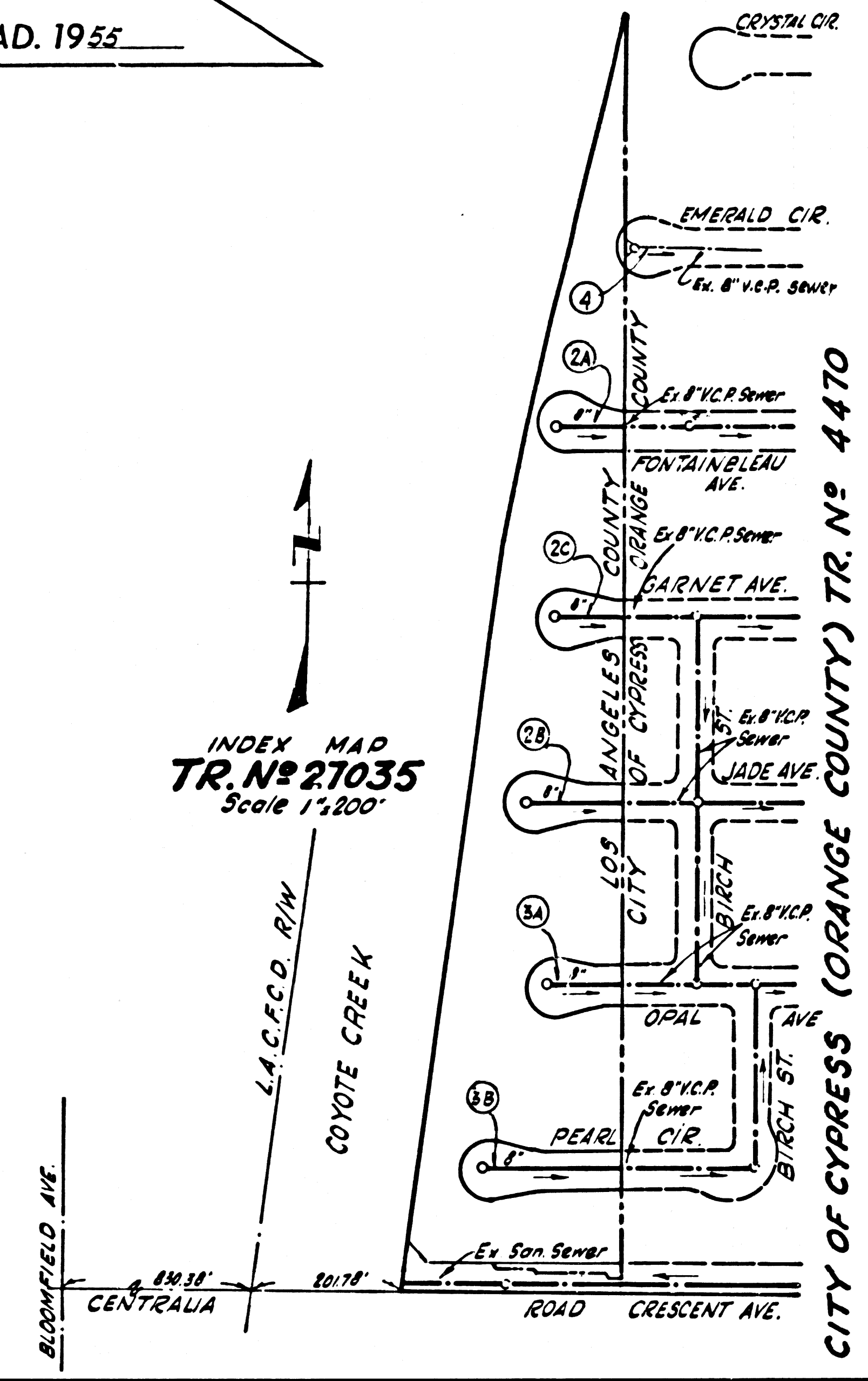


B.M. ELEV. 34.065  
 Fd. C.S. Man. in wall with cover of chl. ink. of Centralia Rd. and Bloomfield Ave.  
 BASE LINE QUAD. 1955



INDEX MAP  
 TR. N° 27035  
 Scale 1"=200'

**SEWER SYSTEM**  
 The sewer system as shown on the "PLANS" shall be constructed in accordance with the standard drawings and specifications of the Cypress County Water District. Standard drawings and specifications are available at the office of Boyle Engineering, 412 Lyon Street, Santa Ana, California.

Sewer house connections: Four-inch V.C.P. sewer house connections are to be constructed from the sewer main to the property line for each lot. The developer is to furnish the sewer contractor with a "PLOT PLAN" indicating the recommended location of the house connection for each lot. All sewer house connections shall be placed prior to surfacing of streets.

All sewer manhole frames and covers shall be left six inches below finished grade. The same earthen sector shall raise the manhole frame and covers to finished grade after the street surfacing is completed.

The district inspector shall be notified prior to commencing work on sewers. Phone KI 7-4474.

APPROVED - CYPRESS COUNTY WATER DISTRICT  
 Boyle Engineering  
 City Engineer  
 By: *John L. Esten* DATE 12/26/67  
 ENGINEER C.E. 83374  
 By: *Jack P. Mackay* DATE 12/26/67  
 PRESIDENT

REVISION  
 REALIGNMENT OF SEWER MAINLINE IN PEARL CIRCLE. LINE MOVED FROM SOUTH TO NORTH SIDE OF ST.  
 Approved by: *John L. Esten* DATE 1-18-68

LAKWOOD BLDG. DIST. NO. 4.3

- NOTES
1. PROVIDE STAKES ON THE PROPERTY LINE OR PROPERTY LINES PRODUCED AT RIGHT ANGLES TO THE SEWER LINE AT THE CENTER LINE OF EACH MANHOLE.
  2. NO REPRESENTATIVE OF THE COUNTY ENGINEER WILL SURVEY OR LAY OUT ANY PORTION OF THE WORK.
  3. THE PRIVATE ENGINEER SHALL FURNISH THE COUNTY ENGINEER WITH GRADE SHEETS AND STATIONING FOR ALL HOUSE LATERALS AND Y BRANCHES AND SHALL PROVIDE STAKES FOR THEM AT THEIR PROPER LOCATIONS WITH STATIONING PLAINLY MARKED. ALL HOUSE LATERALS SHALL BE CONSTRUCTED IN A STRAIGHT ALIGNMENT AT RIGHT ANGLES FROM THE MAIN LINE SEWER EXCEPT AS SHOWN ON THE PLANS. HOUSE LATERALS FROM CHIMNEYS SHALL NOT HAVE AN ANGLE OF LESS THAN 45° WITH THE MAIN LINE SEWER. ANY CHANGE IN ALIGNMENT SHALL BE REQUESTED BY WRITING BY THE PRIVATE ENGINEER.
  4. THE PRIVATE ENGINEER SHALL FURNISH THE HOUSE LATERAL DEPTH AT THE PROPERTY LINE BELOW THE TOP OF CURB ELEVATION FOR EACH HOUSE LATERAL ON THE GRADE SHEET.
  5. NO REVISIONS SHALL BE MADE IN THESE PLANS WITHOUT THE APPROVAL OF THE COUNTY ENGINEER.
  6. THE CONTRACTOR SHALL NOTIFY THE CONSTRUCTION DIVISION BY TELEPHONE, MADISON 9-0747, EXT. 8153, AT LEAST TWENTY-FOUR HOURS BEFORE STARTING ANY WORK UNDER THIS CONTRACT.
  7. MANHOLES SHALL BE BRICK SEWER STRUCTURES PER S-104, EXCEPT AS NOTED. PRECAST CONCRETE MANHOLES PER S-9-185 OR S-9-173 MAY BE USED AS AN ALTERNATE IN LOCATIONS APPROVED BY THE COUNTY ENGINEER.
  8. USE STANDARD MANHOLE FRAMES AND COVERS, S-117, EXCEPT AS NOTED.
  9. MANHOLE TOPS IN UNIMPROVED RIGHTS OF WAY TO BE SIX INCHES ABOVE FINISHED GRADE.
  10. USE EXTRA STRENGTH PIPE, ALL PIPE IS STANDARD DEPTH EXCEPT AS NOTED.
  11. USE MECHANICAL COMPRESSION JOINTS FOR ALL V.C.P. JOINTS PER SPECS., SECS. 36 & 48.
  12. WHERE EVER GROUND WATER IS ENCOUNTERED DURING THE CONSTRUCTION OF THE SEWERS, THE V.C.P. JOINTS SHALL BE OF JOINT COMPOUND PER SPECS., SECS. 33 & 48, OR MECHANICAL COMPRESSION JOINTS PER SPECS., SEC. 34.
  13. IF A POWER POLE IS WITHIN THREE FEET OF THE SEWER, THE SEWER SHALL BE ENCASED, PER S-172, CASE III, TWO FEET ON EITHER SIDE FROM THE POINT OF INTERFERENCE.
  14. IF DURING THE COURSE OF CONSTRUCTION IT IS DETERMINED THAT THERE IS LESS THAN FOUR FEET OF COVER OVER THE TOP OF A MAIN LINE OR HOUSE LATERAL V.C.P. SEWER WHICH IS NOT INDICATED ON THE PLANS, THE PIPE SHALL BE ENCASED PER S-172, CASE III, UNLESS OTHERWISE APPROVED BY THE COUNTY ENGINEER.
  15. ALL Y'S TO BE LAID HORIZONTAL AND HOUSE LATERALS TO BE CONSTRUCTED WITH 1/4" RISE PER FOOT TO PROPERTY LINE.
  16. RESURFACE ALL TRENCHES WITHIN PAVED AREAS TO MEET L.A. COUNTY ROAD DEPT. OR CALIFORNIA STATE HIGHWAY REQUIREMENTS IN ACCORDANCE WITH PERMITS.
  17. FOR ALLOWABLE LEAKAGE TEST USE FORMULA NO. 1, SPECS., SEC. 34.
  18. ALL STATE AND LOCAL TRENCH SAFETY ORDERS WILL BE RIGIDLY ENFORCED.

NO CONNECTIONS FOR THE DISPOSAL OF INDUSTRIAL WASTES SHALL BE MADE TO SEWERS SHOWN ON THESE DRAWINGS WITHOUT WRITTEN PERMISSION FROM THE CHIEF ENGINEER AND GENERAL MANAGER OF THE COUNTY SANITATION DISTRICTS.

COLLECT CHARGES AS INDICATED  
*D. M. Hopkins*

PROFILE ALIGNMENT AND GRADE OF  
 SANITARY SEWERS PAGE 1  
 TO BE CONSTRUCTED IN

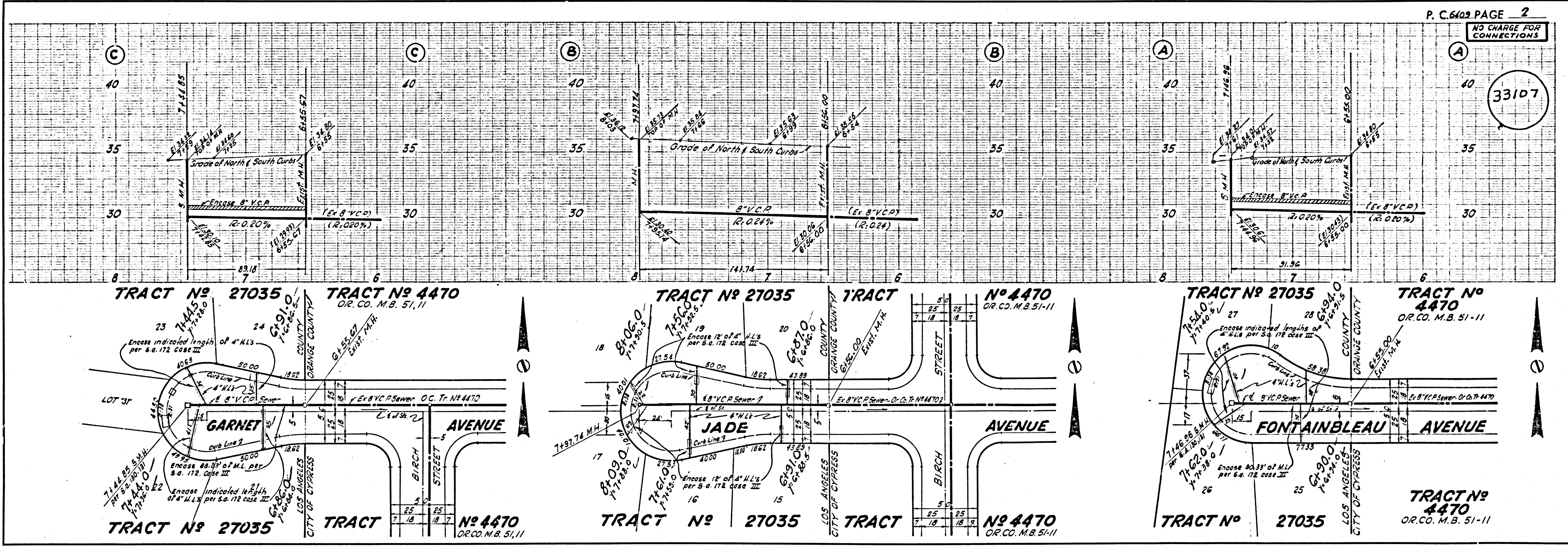
TRACT N° 27035  
 PRIVATE CONTRACT NO. 6409

W.S.31  
 2 SHEETS, 4 PAGES  
 SCALE: HORIZ. 1"=40'  
 VERT. 1"=4'  
 DECEMBER, 1967  
 PREPARED IN THE OFFICES OF  
 VOORHEES-TRIMBLE & NELSON  
 13794 BEACH BLVD.  
 WESTMINSTER, CALIF. TN 3-3563  
 By: *Robert J. Guilford*  
 REG. C. E. NO. 11351  
 FOR LEGEND SEE PLAN NO. S-6-64

33106

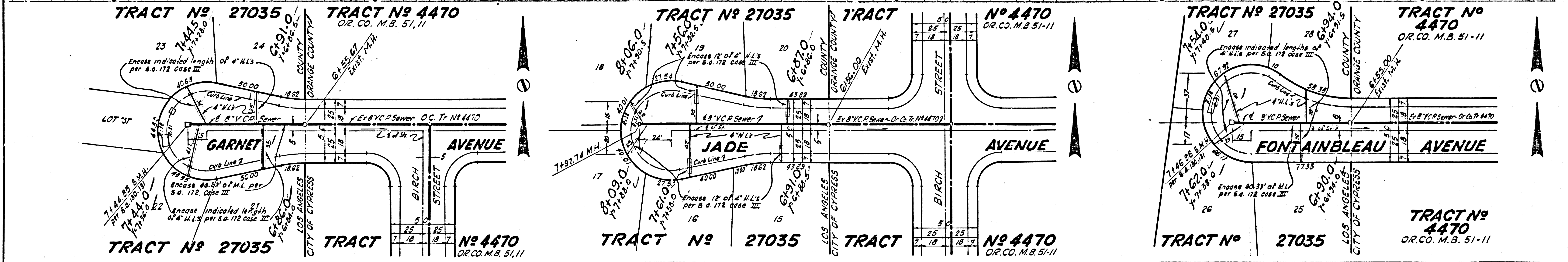
NOTE:  
 GRADES TO WHICH THIS IMPROVEMENT IS TO BE CONSTRUCTED ARE SHOWN ON PLANS AND PROFILES. GRADE POINTS FOR TOP OF CURBS, CENTER LINE OF STREETS, OR CENTER LINE OF ALLEYS ARE SHOWN BY CIRCLES ON PROFILES. AT ALL POINTS BETWEEN DESIGNATED POINTS THE GRADE SHALL BE ESTABLISHED SO AS TO CONFORM TO A STRAIGHT LINE DRAWN BETWEEN SAID DESIGNATED POINTS. ELEVATIONS ARE IN FEET ABOVE U.S.C. & G.S. SEA LEVEL DATUM OF 1929.  
 THIS DRAWING AND THE DATA HEREON ARE HEREBY MADE A PART OF THE SPECIFICATIONS.  
 BEFORE WORK CAN BE STARTED, THE CONTRACTOR MUST OBTAIN A PERMIT TO EXCAVATE IN COUNTY STREETS FROM THE L.A. COUNTY ROAD DEPT., DISTRICT OFFICE NO. 4 AND PAY A FEE TO THE COUNTY ENGINEER, ROOM 200, COUNTY ENGINEERING BUILDING, 100 WEST SECOND STREET OR THE LOS CERRITOS REGIONAL OFFICE, SUFFICIENT TO COVER THE COST OF CONSTRUCTION INSPECTION AND RECORD PLANS.  
 APPROVAL OF THIS PLAN BY THE COUNTY OF LOS ANGELES DOES NOT CONSTITUTE A REPRESENTATION AS TO THE ACCURACY OF THE LOCATION OF OR THE EXISTENCE OR NON-EXISTENCE OF ANY UNDERGROUND UTILITY OR STRUCTURE WITHIN THE LIMITS OF THIS PROJECT. THIS NOTE APPLIES TO ALL PAGES.  
 IF WORK IS TO BE DONE IN A STATE HIGHWAY, A PERMIT MUST BE OBTAINED FROM THE STATE OF CALIFORNIA, DIVISION OF HIGHWAYS, 120 SOUTH SPRING STREET, LOS ANGELES, CALIFORNIA.

COUNTY OF LOS ANGELES, CALIFORNIA  
 JOHN A. LAMBIE, COUNTY ENGINEER  
 J. D. PARKHURST, CHIEF ENGINEER  
 CO. SAN. DIST. NO. 13  
 APPROVED BY: *Richard S. Kline* ASSISTANT SANITATION ENGINEER  
 APPROVED BY: *Robert J. Guilford* OFFICE ENGINEER  
 SUBMITTED BY: *Robert J. Guilford* 1-2-68  
 LOS CERRITOS REGIONAL ENGINEER REG. C.E. N° 3871  
 CHECKED BY: *W. D. Decker* 1-2-68  
 REG. C.E. NO. 5406  
 COUNTY SANITATION DISTRICT OF ORANGE COUNTY, CALIF. CO. SAN. DIST. NO. 8  
 J. N. 0359-39  
 Approved by: *Conrad D. Thorne* C.E. 10, 351



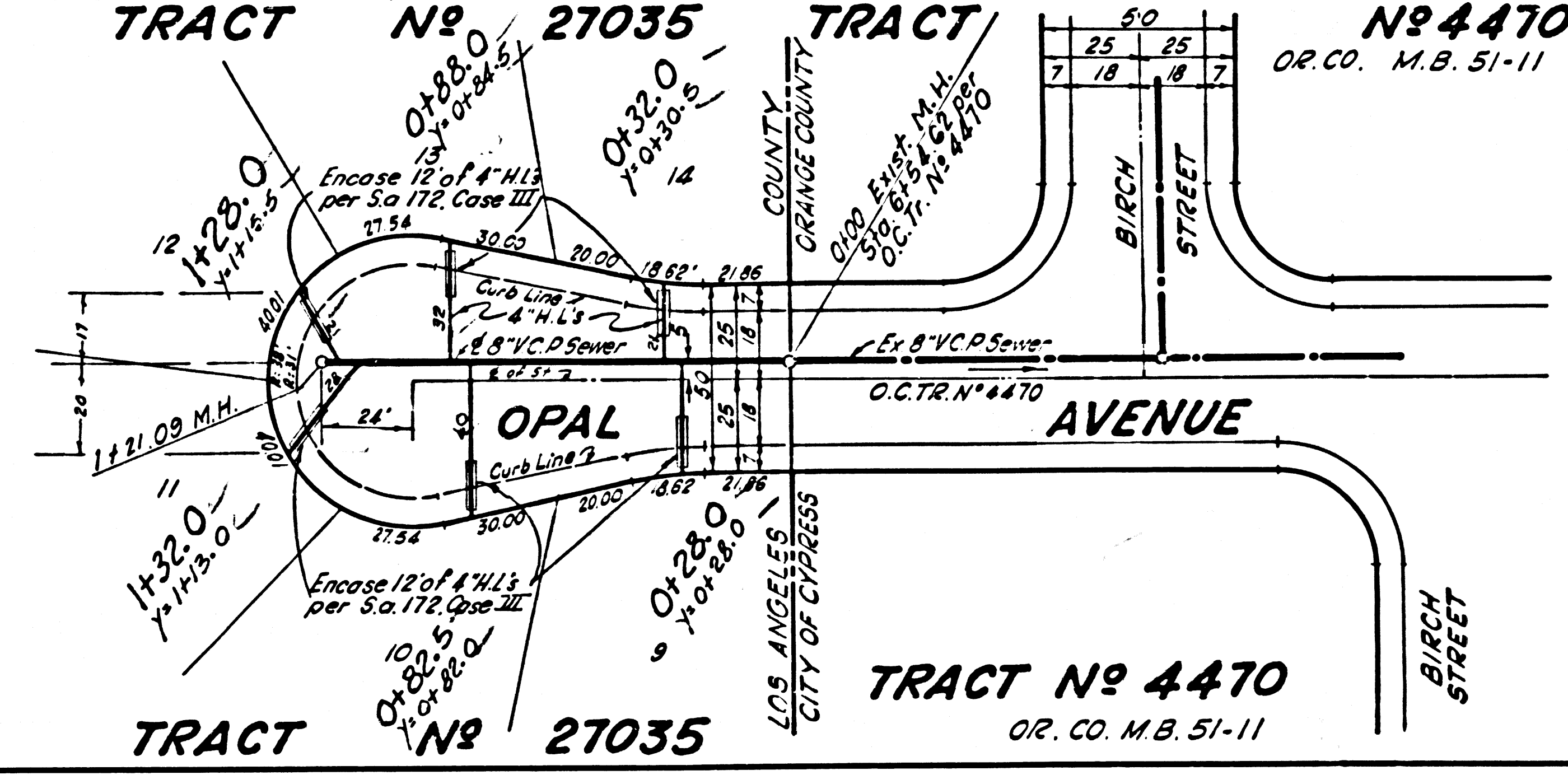
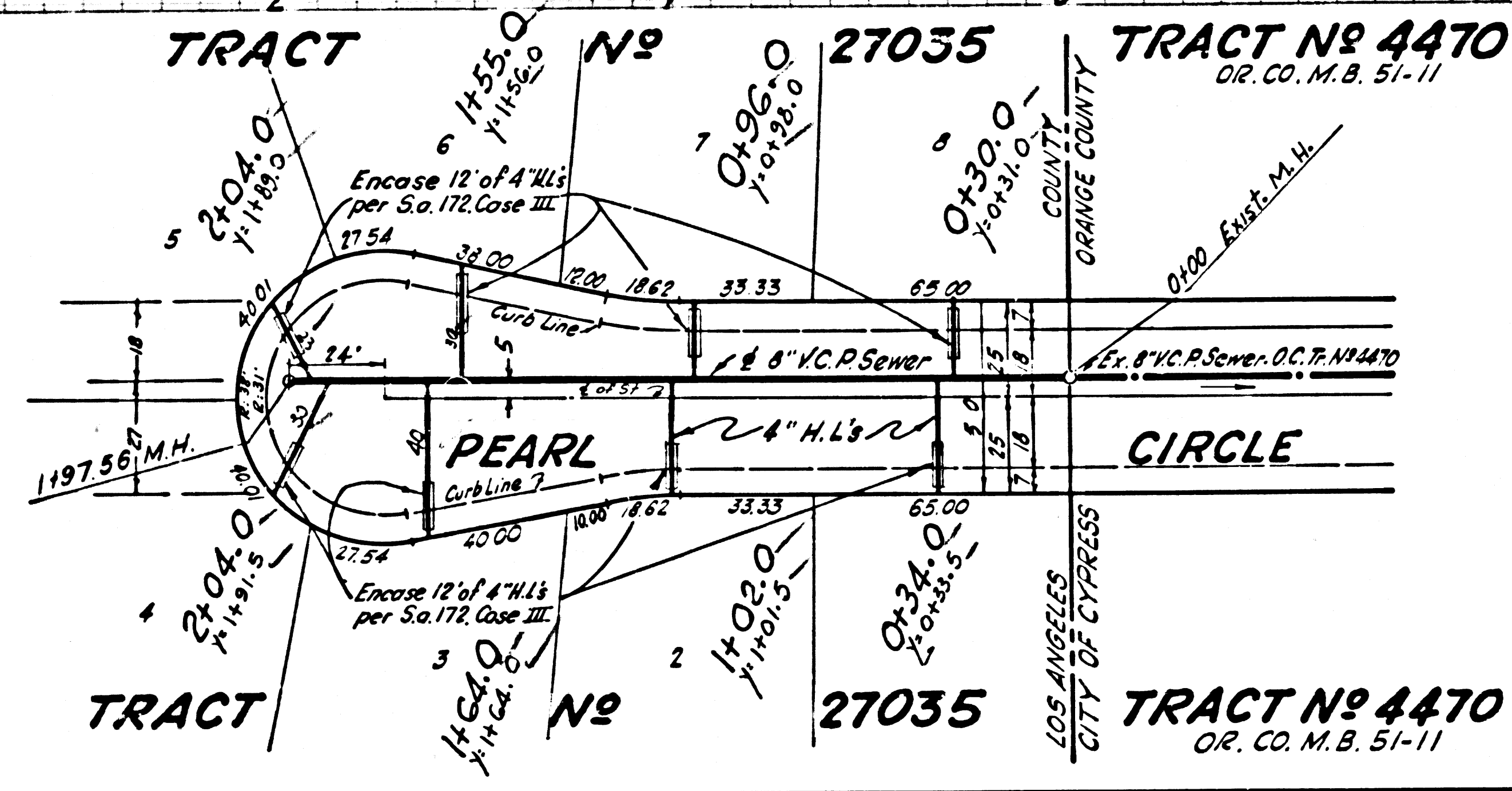
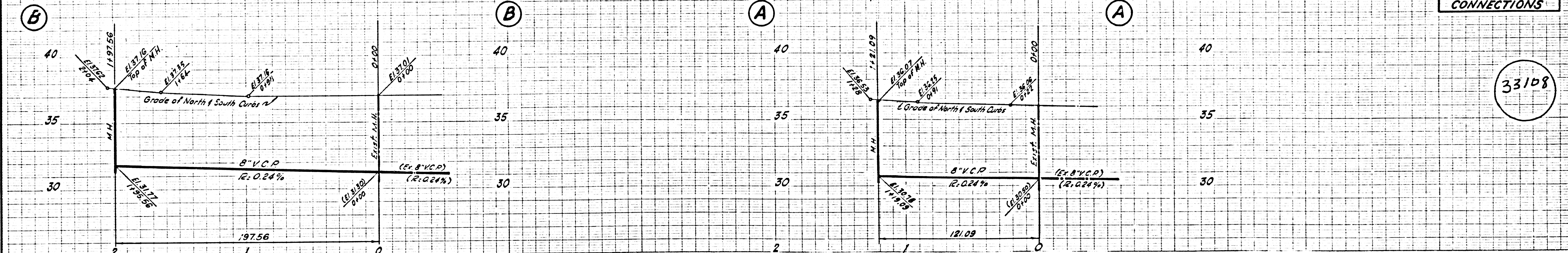
P. C. 6409 PAGE 2

33107



NO CHARGE FOR CONNECTIONS

33108



NO CHARGE FOR CONNECTIONS

33109

