

DOUBLE SCALE  
LOMITA BLDG. DIST. NO. 12

PROFILE ALIGNMENT AND GRADE OF P.C. 6410  
SANITARY SEWERS PAGE 1  
TO BE CONSTRUCTED IN  
J.N. 0359.40

TRACT N° 27858

PRIVATE CONTRACT NO. 6410

W.S. 27

3 SHEETS; 5 PAGES  
SCALE: VERT. 1"=8' OCT. 1963 Revised  
HORIZ. 1"=40' DEC. 1962

PREPARED IN THE OFFICES OF  
BARCLAY-PEARSON CO., INC.

By *Edward L. Pearson*  
REG. C. E. NO. 2783

FOR LEGEND SEE PLAN NO. S-A-64

NOTE:  
GRADES TO WHICH THIS IMPROVEMENT IS TO BE CONSTRUCTED ARE SHOWN ON PLANS AND PROFILES. GRADE POINTS FOR TOP OF CURBS, CENTER LINE OF STREETS, OR CENTER LINE OF ALLEYS ARE SHOWN BY CIRCLES ON PROFILES. AT ALL POINTS BETWEEN DESIGNATED POINTS THE GRADE SHALL BE ESTABLISHED SO AS TO CONFORM TO A STRAIGHT LINE DRAWN BETWEEN SAID DESIGNATED POINTS.  
ELEVATIONS ARE IN FEET ABOVE U.S.C. & G.S. SEA LEVEL DATUM OF 1929.  
THIS DRAWING AND THE DATA HEREON ARE HEREBY MADE A PART OF THE SPECIFICATIONS.  
WORK SHALL BE CONSTRUCTED ACCORDING TO SPECIFICATIONS ON FILE IN THE OFFICE OF THE COUNTY ENGINEER AND SHALL BE PROSECUTED ONLY IN THE PRESENCE OF THE COUNTY ENGINEER.  
BEFORE WORK CAN BE STARTED, THE CONTRACTOR MUST OBTAIN A PERMIT TO EXCAVATE IN COUNTY STREETS FROM THE L. A. COUNTY ROAD DEPT., DISTRICT OFFICE NO. 3, AND PAY A FEE TO THE COUNTY ENGINEER ROOM 218 COUNTY ENGINEERING BLDG., RM. # 209 J, SUFFICIENT TO COVER THE COST OF CONSTRUCTION INSPECTION AND RECORD PLANS.  
APPROVAL OF THIS PLAN BY THE COUNTY OF LOS ANGELES DOES NOT CONSTITUTE A REPRESENTATION AS TO THE ACCURACY OF THE LOCATION OF OR THE EXISTENCE OR NON-EXISTENCE OF ANY UNDERGROUND UTILITY PIPE, OR STRUCTURE WITHIN THE LIMITS OF THIS PROJECT. THIS NOTE APPLIES TO ALL PAGES.  
IF WORK IS TO BE DONE IN A STATE HIGHWAY, A PERMIT MUST BE OBTAINED FROM THE STATE OF CALIFORNIA, DIVISION OF HIGHWAYS, 120 SOUTH SPRING STREET.

COUNTY OF LOS ANGELES, CALIFORNIA

APPROVED, JOHN A. LAMBIE, COUNTY ENGINEER APPROVED, J. D. PARKHURST, CHIEF ENGINEER

By *John A. Lambie* COUNTY ENGINEER By *J. D. Parkhurst* CHIEF ENGINEER

CHECKED BY *St. W. ...* OFFICE OF COUNTY ENGINEER, REG. C. E. NO. 2546

SUBMITTED *Jack C. ...* PALOS VERDES-CENTINARO VALLEY REGIONAL ENGINEER

- NOTES:
1. PROVIDE STAKES ON THE PROPERTY LINE OR PROPERTY LINES PRODUCED AT RIGHT ANGLES TO THE SEWER LINE AT THE CENTER LINE OF EACH MANHOLE.
  2. NO REPRESENTATIVE OF THE COUNTY ENGINEER WILL SURVEY OR LAY OUT ANY PORTION OF THE WORK.
  3. THE PRIVATE ENGINEER SHALL FURNISH THE COUNTY ENGINEER WITH GRADE SHEETS AND STATIONING FOR ALL HOUSE LATERALS AND Y BRANCHES AND SHALL PROVIDE STAKES FOR THEM AT THEIR PROPER LOCATIONS WITH STATIONING PLAINLY MARKED. ANY CHANGE IN LOCATION SHALL BE REQUESTED IN WRITING BY THE PRIVATE ENGINEER. ALL HOUSE LATERALS SHALL BE CONSTRUCTED IN A STRAIGHT ALIGNMENT AT RIGHT ANGLES FROM THE MAIN LINE SEWER EXCEPT AS SHOWN ON THESE PLANS.
  4. THE PRIVATE ENGINEER SHALL FURNISH THE HOUSE LATERAL DEPTH AT THE PROPERTY LINE BELOW THE TOP OF CURB ELEVATION FOR EACH HOUSE LATERAL ON THE GRADE SHEET.
  5. NO REVISIONS SHALL BE MADE IN THESE PLANS WITHOUT THE APPROVAL OF THE COUNTY ENGINEER.
  6. USE STANDARD MANHOLE FRAMES AND COVERS, S-117, EXCEPT AS NOTED.
  7. USE EXTRA STRENGTH PIPE. ALL PIPE IS STANDARD DEPTH.
  8. USE MECHANICAL COMPRESSION JOINTS FOR ALL V.C.P. JOINTS PER SPECS., SECS. 34 & 48.49.
  9. RESURFACE ALL TRENCH WITHIN PAVED AREA TO MEET L.A. COUNTY ROAD DEPT. OR CALIF. STATE HIGHWAY REQUIREMENTS IN ACCORDANCE WITH PERMITS.
  10. ENCASE FOUR FEET OF SEWER AT POINTS OF INTERFERENCE WITH POLES, CASE III, S-117.
  11. HOUSE LATERALS TO BE CONSTRUCTED WITH INVERTS AT PROPERTY LINE 2 FEET BELOW CURB GRADE EXCEPT AS NOTED.
  12. ALL STRUCTURES SHALL BE BRICK SEWER STRUCTURES 5-10" RECAST CONCRETE MANHOLES PER S-117 OR S-113 MAY BE USED AS AN ALTERNATE IN LOCATIONS APPROVED BY THE COUNTY ENGINEER.
  13. FOR ALLOWABLE LEAKAGE TEST USE FORMULA NO. 2 SPECS., SEC. 34.
  14. MANHOLE TOPS IN UNIMPROVED RIGHTS-OF-WAY TO BE SIX INCHES ABOVE FINISHED GRADE.
  15. THE CONTRACTOR SHALL NOTIFY THE CONSTRUCTION DIVISION BY TELEPHONE, MADISON 9-4747, EXT. 181 AT LEAST TWENTY-FOUR HOURS BEFORE STARTING ANY WORK UNDER THIS CONTRACT.
  16. IF DURING THE COURSE OF CONSTRUCTION IT IS DETERMINED THAT THERE IS LESS THAN FOUR FEET COVER OVER THE TOP OF A MAIN LINE OR HOUSE LATERAL V.C.P. LEVER WHICH IS NOT INDICATED ON THE PLANS, THE PIPE SHALL BE ENCASED PER S-117, CASE II, UNLESS OTHERWISE APPROVED BY THE COUNTY ENGINEER.
  17. ALL STATE AND LOCAL TRENCH SAFETY ORDERS WILL BE RIGIDLY ENFORCED.
  18. SPECIFICATIONS DATED MAY 25, 1962, APPLY IN THE CONSTRUCTION OF THIS PROJECT.
  19. (a) NO CONSTRUCTION WILL BE PERMITTED IN FULL ROAD UNLESS ACCEPTABLE CERTIFICATION IS SUBMITTED TO THE CONSTRUCTION DIVISION OF THE COUNTY ENGINEER'S DEPARTMENT THAT RELATIVE COMPACTNESS IS GREATER THAN 80%.  
(b) IF COMPACTNESS IS LESS THAN 90%, THE SEWER MUST BE CORDLED PER S-117. SPECIAL M.H. BARS MUST BE INSTALLED PER S-117.3 RI INDICATED ON THESE PLANS.  
(c) IF COMPACTNESS IS GREATER THAN 90%, CORDLING AND SPECIAL M.H. BARS ARE NOT REQUIRED.
  20. THE EXISTENCE & LOCATION OF ANY UNDERGROUND UTILITY PIPES OR STRUCTURES SHOWN ON THESE PLANS ARE OBTAINED BY A SEARCH OF THE AVAILABLE RECORDS. TO THE BEST OF OUR KNOWLEDGE THERE ARE NO EXISTING UTILITIES EXCEPT AS SHOWN ON THESE PLANS. THE CONTRACTOR IS REQUIRED TO TAKE PRECAUTIONARY MEASURES TO PROTECT THE UTILITY LINES SHOWN AND ANY OTHER LINES NOT OF RECORD OR NOT SHOWN ON THESE PLANS.

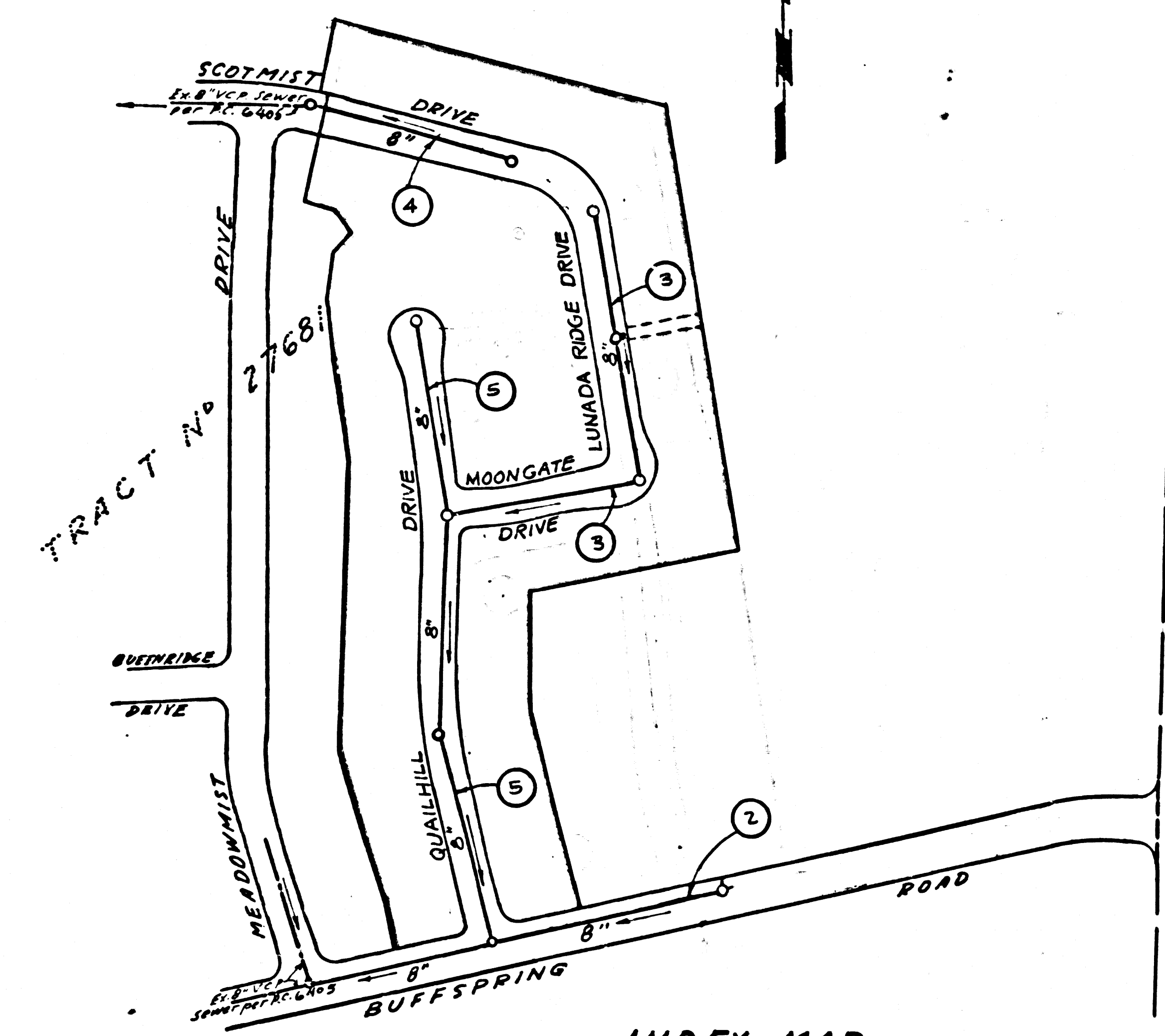
B.M. S.Y. 4374  
3PK. & L. +40 N/O Q/L HAWTHORNE BLVD.  
+4075 W/O C/L SILVER SPUR RD. +180 W/O  
C/L GRAYLAKE RD. E.L. 1093.022.

REVISION: NEW SEWER ALIGNMENTS  
TO CONFORM WITH THE RE-SUBDIVISION  
OF TRACT N° 27858  
*Edward L. Pearson*  
REG. C.E. NO. 2783  
APPROVED *Ralph Schafers* 11/6/63

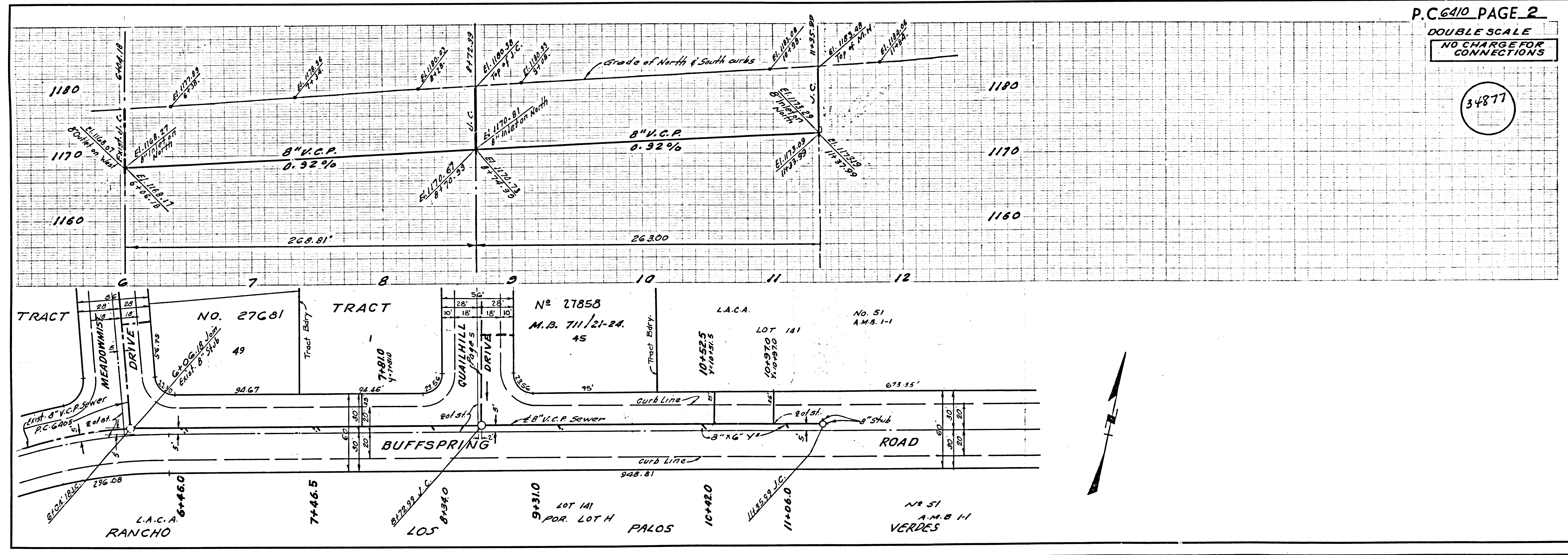
APPROVED *J. D. Parkhurst*  
ASST. SANITATION ENGINEER  
APPROVED  
J. D. PARKHURST, CHIEF ENG.  
COUNTY ENR. DIST. #5  
OFFICE ENGINEER

NO CONNECTIONS FOR THE DISPOSAL OF  
INDUSTRIAL WASTES SHALL BE MADE TO  
SEWERS SHOWN ON THESE DRAWINGS  
WITHOUT WRITTEN PERMISSION FROM THE  
CHIEF ENGINEER AND GENERAL MANAGER  
OF THE COUNTY SANITATION DISTRICTS.

NO CHARGE  
FOR CONNECTIONS  
d. Curtis 12-10-62



INDEX MAP  
TRACT N° 27858  
P.C. 6410 SCALE: 1/2"=200'

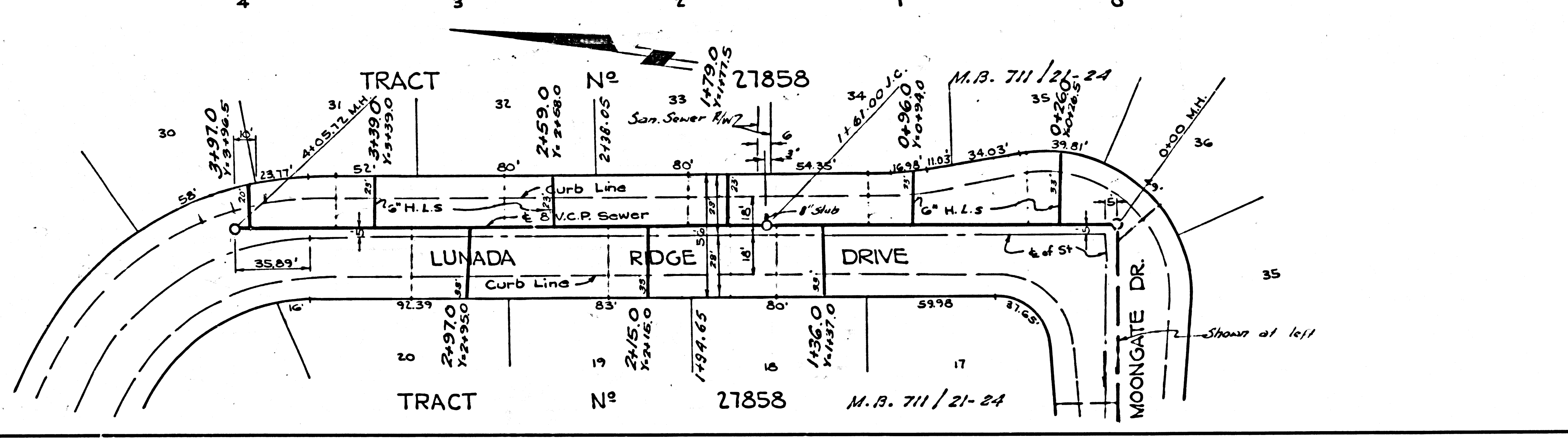
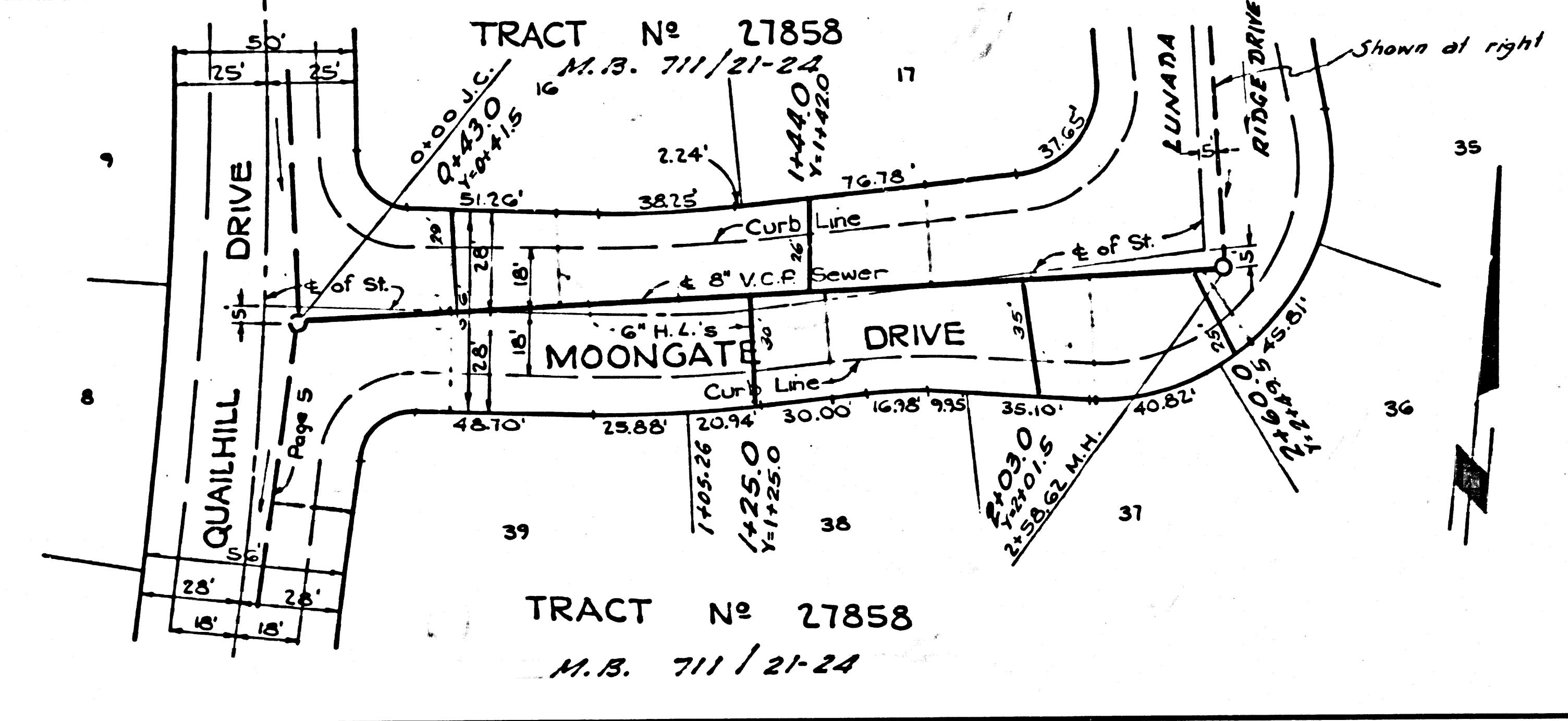
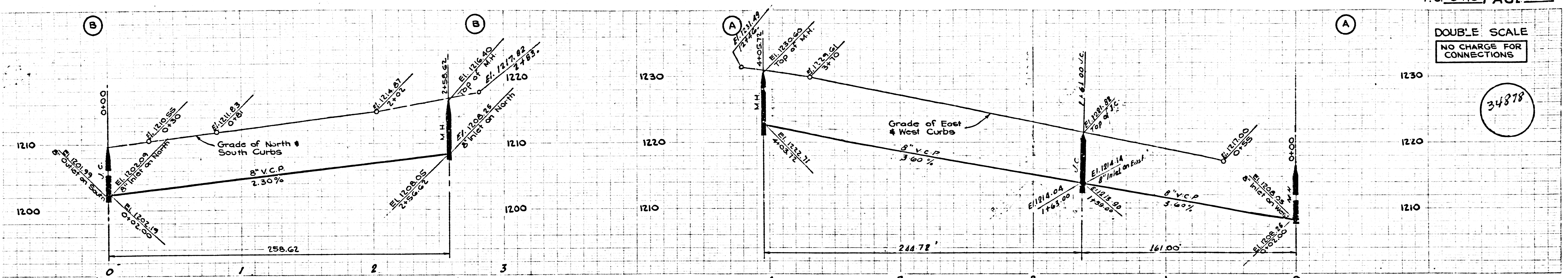


P.C. 6410 PAGE 2  
DOUBLE SCALE  
NO CHARGE FOR CONNECTIONS

34877

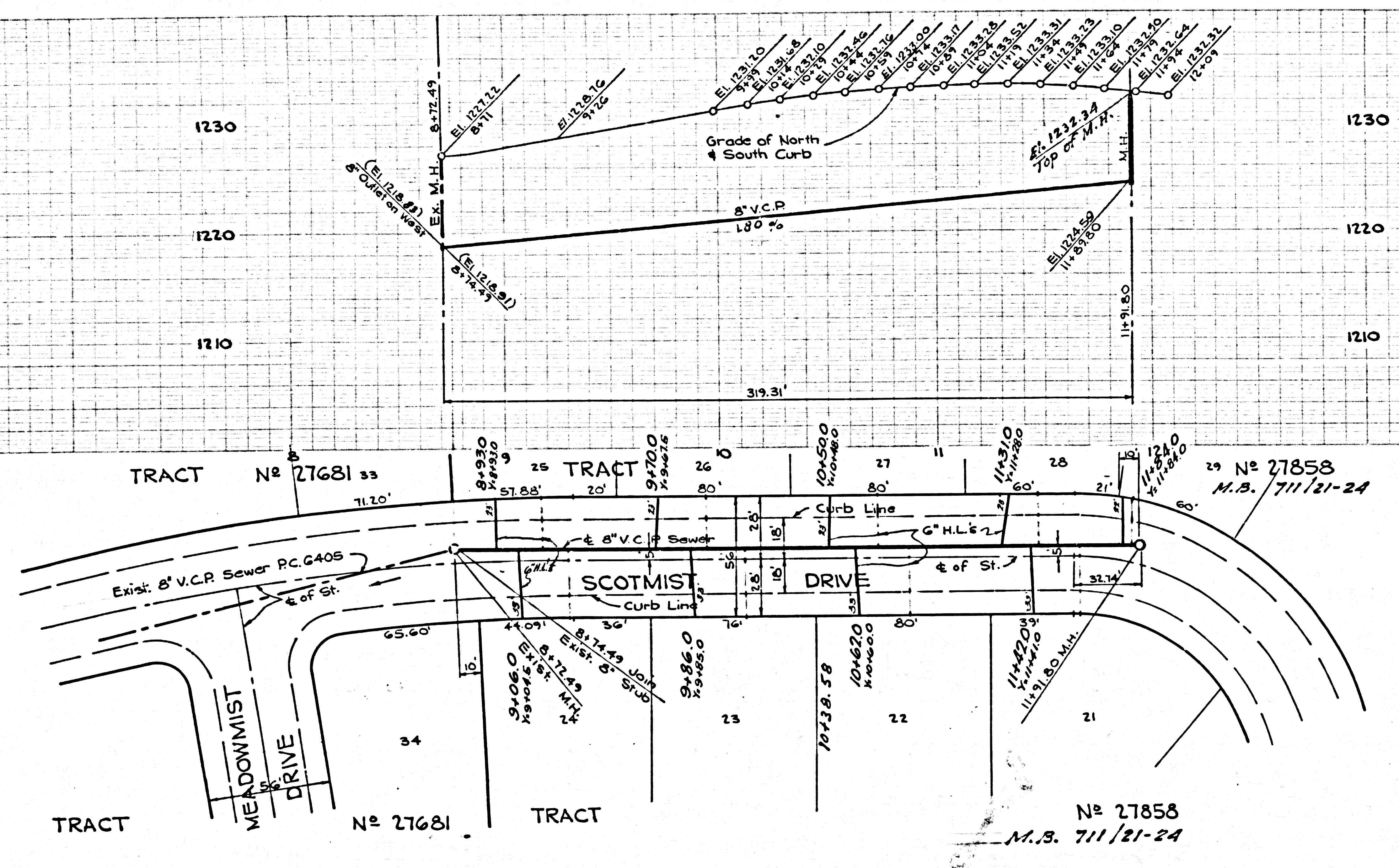
DOUBLE SCALE  
NO CHARGE FOR CONNECTIONS

34878



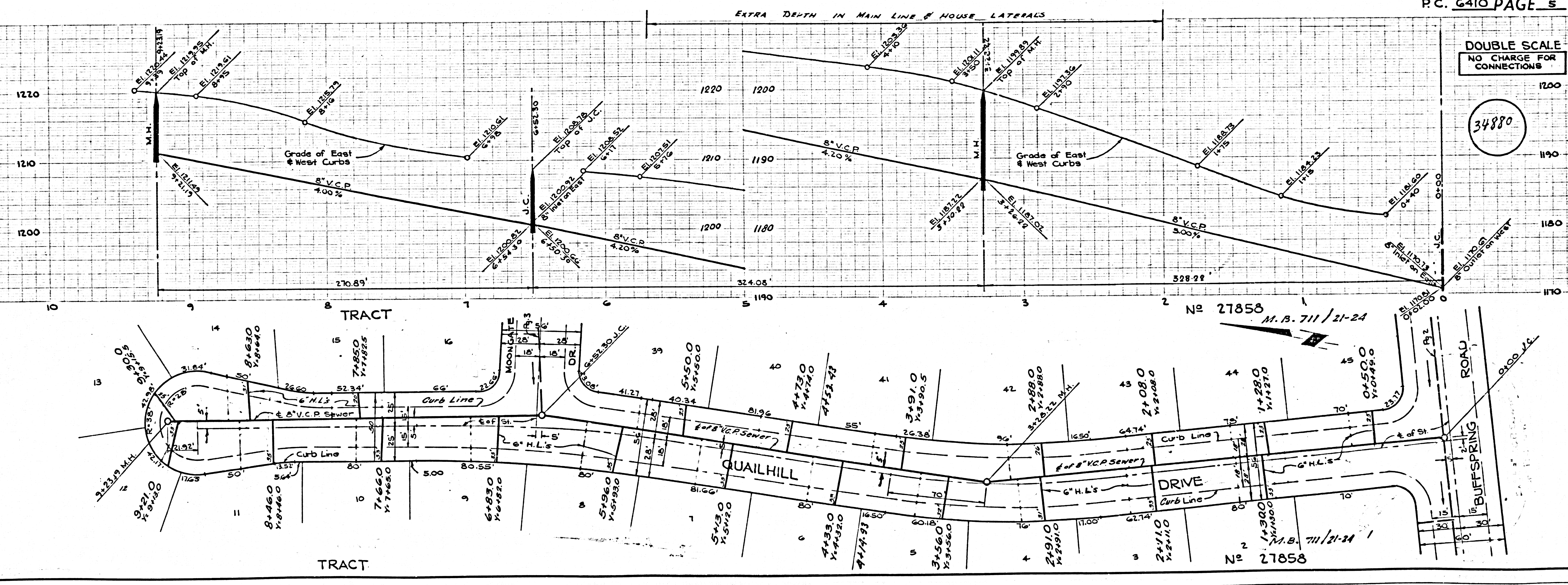
DOUBLE SCALE  
NO CHARGE FOR  
CONNECTIONS

34877



DOUBLE SCALE  
NO CHARGE FOR  
CONNECTIONS

34880



81825 1341