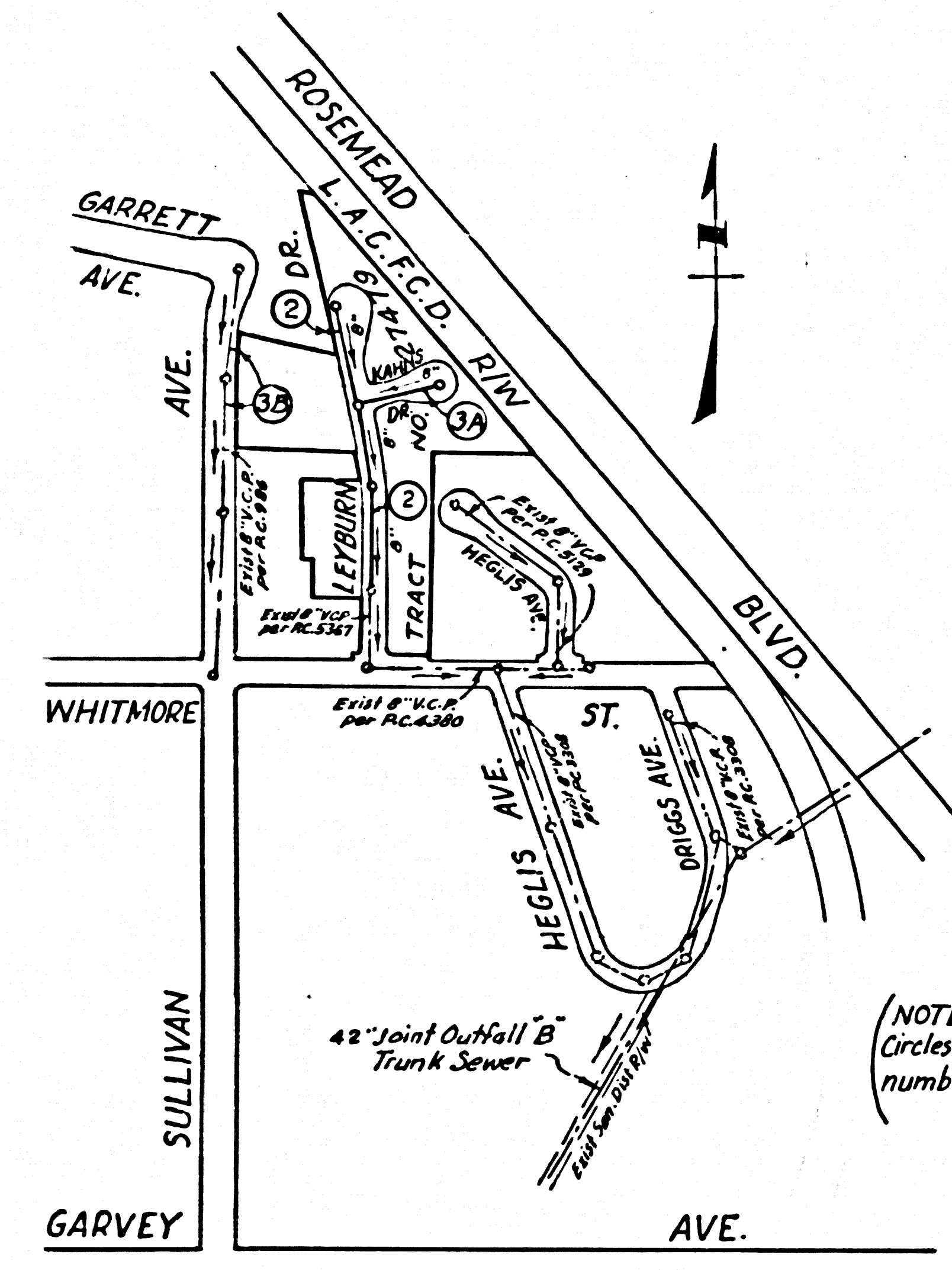


CITY OF ROSEMEAD BLDG. DIST. NO. 5.07

TRACT NO. 27479
PRIVATE CONTRACT NO. 6412

BENCH MARK: 5.G.1450 ELEV. 246.747
 Rosemead Boulevard & Whitmore Street
 L. & B.N. in N. Curb Rosemead Blvd. ± 1' W. of
 Cb. Ref. & 2' W. of Catch Basin ± 80' E. of
 Whitmore St.
 ROSEMEAD GUAD. ADJ. 1955



INDEX MAP
 TRACT NO. 27479
 P.C. 6412
 SCALE: 1"=300'

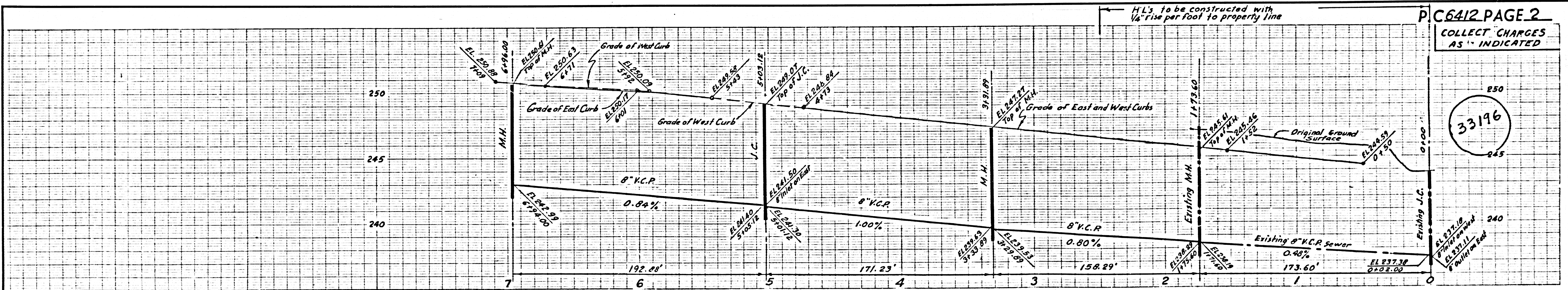
- NOTES:**
1. PROVIDE STAKES ON THE PROPERTY LINE OR PROPERTY LINES PRODUCED AT RIGHT ANGLES TO THE SEWER LINE AT THE CENTER LINE OF EACH MANHOLE.
 2. NO REPRESENTATIVE OF THE CITY ENGINEER WILL SURVEY OR LAY OUT ANY PORTION OF THE WORK.
 3. THE PRIVATE ENGINEER SHALL FURNISH THE CITY ENGINEER WITH GRADE SHEETS AND STATIONING FOR ALL HOUSE LATERALS AND Y BRANCHES AND SHALL PROVIDE STAKES FOR THEM AT THEIR PROPER LOCATIONS WITH STATIONING PLAINLY MARKED. ALL HOUSE LATERALS SHALL BE CONSTRUCTED IN A STRAIGHT ALIGNMENT AT RIGHT ANGLES FROM THE MAIN LINE SEWER EXCEPT AS SHOWN ON THE PLANS. HOUSE LATERALS FROM CORNERS SHALL HAVE AN ANGLE OF LESS THAN 45° WITH THE MAIN LINE SEWER. ANY CHANGE IN ALIGNMENT SHALL BE REQUESTED IN WRITING BY THE PRIVATE ENGINEER.
 4. THE PRIVATE ENGINEER SHALL FURNISH THE HOUSE LATERAL DEPTH AT THE PROPERTY LINE BELOW THE TOP OF CURB ELEVATION FOR EACH HOUSE LATERAL ON THE GRADE SHEET.
 5. NO REVISIONS SHALL BE MADE IN THESE PLANS WITHOUT THE APPROVAL OF THE CITY ENGINEER.
 6. THE CONTRACTOR SHALL NOTIFY THE CONSTRUCTION DIVISION BY TELEPHONE, NUMBER 9-4747, EXT. 81351, AT LEAST TWENTY-FOUR HOURS BEFORE STARTING ANY WORK UNDER THIS CONTRACT.
 7. MANHOLES SHALL BE BUILT SEWER STRUCTURES PER S-1-104. PRECAST CONCRETE MANHOLES PER S-1-135 OR S-1-135 AMY BE USED AS AN ALTERNATE IN LOCATIONS APPROVED BY THE CITY ENGINEER.
 8. USE STANDARD MANHOLE FRAMES AND COVERS, S-1-117.
 9. MANHOLE TOPS IN IMPROVED RIGHTS OF WAY TO BE LEVEL WITH FINISHED GRADE.
 10. USE EXTRA STRENGTH PIPE. ALL PIPE IS STANDARD DEPTH.
 11. USE CEMENT MORTAR JOINTS OR MECHANICAL COMPRESSION JOINTS FOR ALL V.C.R. IN MAIN LINE PER SPEC'S. SECS. 36 AND 48.
 12. WHEREVER GROUND WATER IS ENCOUNTERED DURING THE CONSTRUCTION OF THE SEWERS, THE V.C.R. JOINTS SHALL BE OF JOINT COMPOUND PER SPEC'S. SECS. 33 AND 48, OR MECHANICAL COMPRESSION JOINTS PER SPEC'S. SEC. 36.
 13. IF A POWER POLE IS WITHIN THREE FEET OF THE SEWER, THE SEWER SHALL BE ENCASED PER S-1-172 CASE III, TWO FEET ON EITHER SIDE FROM THE POINT OF INTERFERENCE.
 14. IF DURING THE COURSE OF CONSTRUCTION IT IS DETERMINED THAT THERE IS LESS THAN FOUR FEET OF COVER OVER THE TOP OF A MAIN LINE OR HOUSE LATERAL V.C.R. SEWER WHICH IS NOT INDICATED ON THE PLANS, THE PIPE SHALL BE ENCASED PER S-1-172 CASE II, UNLESS OTHERWISE APPROVED BY THE CITY ENGINEER.
 15. HOUSE LATERALS TO BE CONSTRUCTED WITH INVERTS AT PROPERTY LINE & FEET BELOW CURB GRADE, EXCEPT AS NOTED.
 16. RESURFACE ALL TRENCHES WITHIN PAVED AREAS TO MEET CITY OF ROSEMEAD OR CALIFORNIA STATE HIGHWAY REQUIREMENTS IN ACCORDANCE WITH PERMITS.
 17. FOR ALLOWABLE LEAKAGE TEST USE FORMULA NO. 1, SPEC'S. SEC. 54.
 18. USE MECHANICAL COMPRESSION JOINTS FOR ALL V.C.R. HOUSE LATERALS PER SPEC'S. SEC. 36.
 19. ALL STATE AND LOCAL TRENCH SAFETY ORDERS WILL BE RIGIDLY ENFORCED.
 20. STANDARD SPECIFICATIONS DATED MAY 25, 1962, APPLY IN THE CONSTRUCTION OF THIS PROJECT.

W.S. 37
 2 SHEETS, 3 PAGES
 SCALE: VERT. 1"=4' HORIZ. 1"=40'
 NOVEMBER, 1962
 PREPARED IN THE OFFICES OF
HILLCREST ENGINEERING CORPORATION
 BY: *Harold H. Foyl*
 REG. C. E. NO. 1832
 FOR LEGEND SEE PLAN NO. S-A-64

CONNECTION CHARGES AS INDICATED
R. Pearce 2/13/63

NO CONNECTIONS FOR THE DISPOSAL OF INDUSTRIAL WASTES SHALL BE MADE TO SEWERS SHOWN ON THESE DRAWINGS WITHOUT WRITTEN PERMISSION FROM THE CHIEF ENGINEER AND GENERAL MANAGER OF THE COUNTY SANITATION DISTRICT.

CITY OF ROSEMEAD, CALIFORNIA
 APPROVED, JOHN A. LAMBIE, CITY ENGINEER APPROVED, JOHN D. BARNHART, CHIEF ENGINEER
 CO. SAN. DIST. NO. 13
 BY: *Harold H. Foyl* ASSISTANT SANITATION ENGINEER BY: *J. D. Barnhart* OFFICE ENGINEER
 CHECKED BY: *Steve Underhill*
 OFFICE OF CITY ENGINEER, REG. C. E. NO. 3466
 SUBMITTED *W.C. Pindator* SAN GABRIEL VALLEY REGIONAL ENGINEER



FOR PORTION OF LOT II
 COLLECT REIMBURSEMENT CHARGE -
 CALL CENTRAL OFFICE - SEE P.C. 986

