

DOUBLE SCALE
LOMITA BLDG. DIST. NO. 12

PROFILE ALIGNMENT AND GRADE OF P.C. 6414-B
SANITARY SEWERS PAGE 1
TO BE CONSTRUCTED IN
TRACT No. 27789

PRIVATE CONTRACT NO. 6414-B

W.S. 27
1 SHEET OF 2 PAGES
SCALE: VERT. 1"=8'
HORIZ. 1"=40'
JAN. 1963
PREPARED IN THE OFFICES OF
McINTIRE & QUIROS INC.

32997

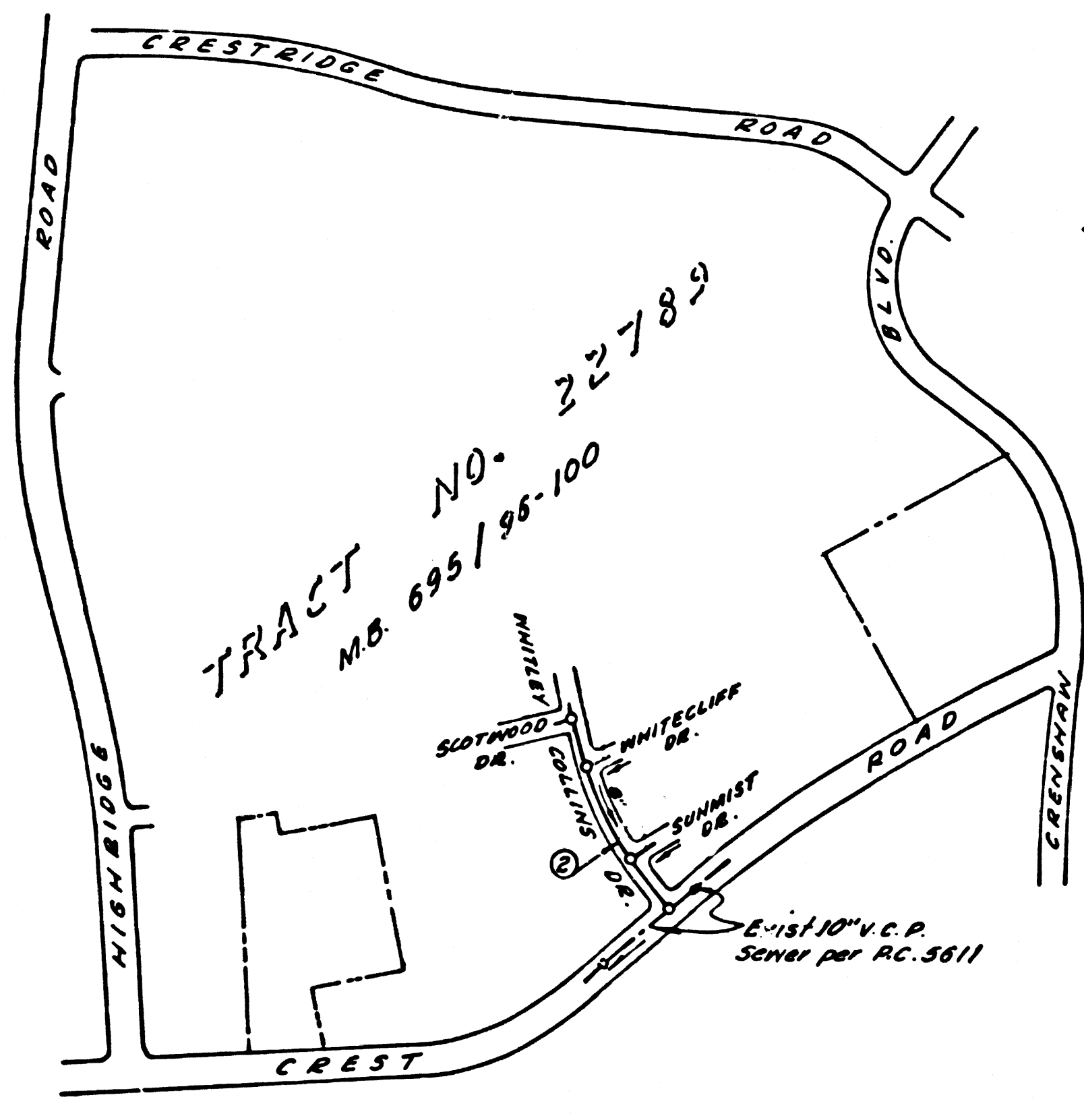
By: *F. Quiros*
REG. C. E. NO. 8583
FOR LEGEND SEE PLAN NO. S.A.-64

NOTE:
GRADES TO WHICH THIS IMPROVEMENT IS TO BE CONSTRUCTED ARE SHOWN ON PLANS AND PROFILES. GRADE POINTS FOR TOP OF CURBS, CENTER LINE OF STREETS, OR CENTER LINE OF ALLEYS ARE SHOWN BY CIRCLES ON PROFILES. AT ALL POINTS BETWEEN DESIGNATED POINTS THE GRADE SHALL BE ESTABLISHED SO AS TO CONFORM TO A STRAIGHT LINE DRAWN BETWEEN SAID DESIGNATED POINTS.
ELEVATIONS ARE IN FEET ABOVE U.S.C. & G.S. SEA LEVEL DATUM OF 1929.
THIS DRAWING AND THE DATA HEREON ARE HEREBY MADE A PART OF THE SPECIFICATIONS.
WORK SHALL BE CONSTRUCTED ACCORDING TO SPECIFICATIONS ON FILE IN THE OFFICE OF THE COUNTY ENGINEER AND SHALL BE PROSECUTED ONLY IN THE PRESENCE OF THE COUNTY ENGINEER.
BEFORE WORK CAN BE STARTED, THE CONTRACTOR MUST OBTAIN A PERMIT TO EXCAVATE IN COUNTY STREETS FROM THE L. A. COUNTY ROAD DEPT., DISTRICT OFFICE NO. 2, AND PAY A FEE WITH THE COUNTY ENGINEER, ROOM 310, 108 WEST SECOND STREET, SUFFICIENT TO COVER THE COST OF CONSTRUCTION INSPECTION AND RECORD PLANS.
APPROVAL OF THIS PLAN BY THE COUNTY OF LOS ANGELES DOES NOT CONSTITUTE A REPRESENTATION AS TO THE ACCURACY OF THE LOCATION OF OR THE EXISTENCE OR NON-EXISTENCE OF ANY UNDERGROUND UTILITY PIPE, OR STRUCTURE WITHIN THE LIMITS OF THIS PROJECT. THIS NOTE APPLIES TO ALL PAGES.
IF WORK IS TO BE DONE IN A STATE HIGHWAY, A PERMIT MUST BE OBTAINED FROM THE STATE OF CALIFORNIA, DIVISION OF HIGHWAYS, 120 SOUTH SPRING STREET.

COUNTY OF LOS ANGELES, CALIFORNIA
APPROVED, JOHN A. LAMBIE, COUNTY ENGINEER APPROVED, J.B. MARKHURST, CHIEF ENGINEER
BY: *John A. Lambie* ASS'T. SANITATION ENGINEER BY: *J.B. Markhurst* OFFICE ENGINEER
CHECKED BY: *J.R. Dieder* 2-11-63
OFFICE OF COUNTY ENGINEER, REG. C. E. NO. 2416

SUBMITTED *Jack C. Loring*
VALLE VERDES-CENTINELA VALLEY REGIONAL ENGINEER

BENCH MARK
Bench Mark Sy 4402-Los Angeles Sur. Mon. Mtd.
B.M. 50-7 1936 R.E. 5869" in 12" Conc. Post 4"
above ground @ N.E. Cor. Crest Rd. & Crestwood Blvd
92.5 feet Ely. From ctr. point of 40 feet N.Y. From
ctr. Pymt. 55.3 feet East of P.P. #1038439 E. under
guy cable. Base Line 1955. Elev. = 1201.398.



NOTE: Number in circle indicates page number

INDEX MAP
TRACT NO. 27789
Scale: 1"=600'
P.C. 6414-B

NO CHARGE FOR CONNECTIONS
John A. Lambie

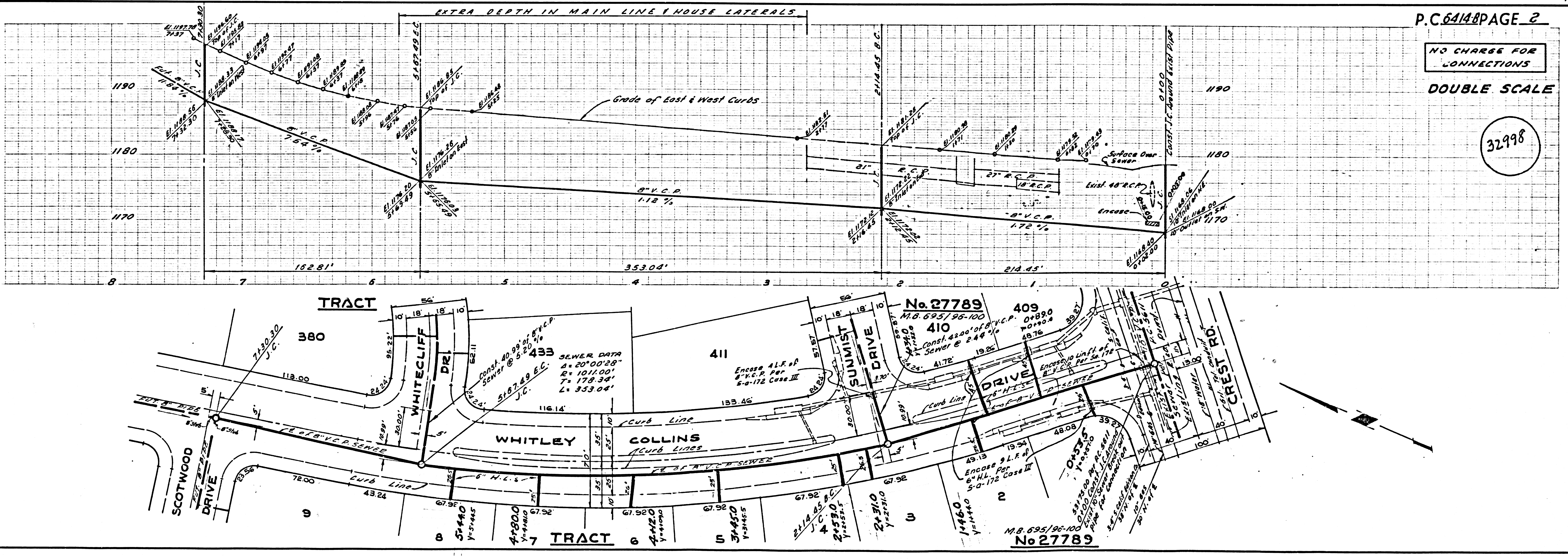
- NOTES:
1. PROVIDE STAKES ON THE PROPERTY LINE OR PROPERTY LINES PRODUCED AT RIGHT ANGLES TO THE SEWER LINE AT THE CENTER LINE OF EACH MANHOLE.
 2. NO REPRESENTATIVE OF THE COUNTY ENGINEER WILL SURVEY OR LAY OUT ANY PORTION OF THE WORK.
 3. THE PRIVATE CONTRACTOR SHALL FURNISH THE COUNTY ENGINEER WITH GRADE SHEETS AND STATIONING FOR ALL HOUSE LATERALS AND Y BRANCHES AND SHALL PROVIDE STAKES FOR THEM AT THEIR PROPER LOCATIONS WITH STATIONING PLAINLY MARKED. ANY CHANGE IN LOCATION SHALL BE REQUESTED IN WRITING BY THE PRIVATE CONTRACTOR. ALL HOUSE LATERALS SHALL BE CONSTRUCTED WITH A STRAIGHT ALIGNMENT AT RIGHT ANGLES FROM THE MAIN LINE SEWER EXCEPT AS SHOWN ON THE PLANS. ANY CHANGE IN ALIGNMENT SHALL BE REQUESTED IN WRITING BY THE PRIVATE CONTRACTOR. THE PRIVATE ENGINEER SHALL FURNISH THE HOUSE LATERAL DEPTH AT THE PROPERTY LINE BELOW THE TOP OF CURB (PRIVATE SEWER) ELEVATION FOR EACH HOUSE LATERAL ON THE GRADE SHEET.
 4. NO REVISIONS SHALL BE MADE IN THESE PLANS WITHOUT THE APPROVAL OF THE COUNTY ENGINEER.
 5. USE STANDARD MANHOLE FRAMES AND COVERS, S-117, EXCEPT AS NOTED.
 6. USE EXTRA STRENGTH PIPE, ALL PIPE IS STANDARD DEPTH, EXCEPT AS NOTED.
 7. USE MECHANICAL COMPRESSION JOINTS FOR ALL V.C.P. JOINTS PER SPECS, SECS. 26 & 44.1
 8. RESURFACE ALL TRENCH WITHIN PAVED AREA TO MEET L.A. COUNTY ROAD DEPT. OR CALIF. STATE HIGHWAY REQUIREMENTS IN ACCORDANCE WITH PERMITS.
 9. ENCASE FOUR FEET OF SEWER AT POINTS OF INTERFERENCE WITH POLES, CASE III, S-172, WHEN POLE IS WITHIN 3 FT. OF SEWER
 10. HOUSE LATERALS TO BE CONSTRUCTED WITH INVERTS AT PROPERTY LINE 6 FEET BELOW CURB GRADE
 11. ALL STRUCTURES SHALL BE BRICE SEWER STRUCTURES, S-104 PRECAST CONCRETE MANHOLES PER S-135 OR S-173 MAY BE USED AS AN ALTERNATE IN LOCATIONS APPROVED BY THE COUNTY ENGINEER.
 12. FOR ALLOWABLE LEAKAGE TEST USE FORMULA NO. 10 SPECS, SEC. 54
 13. MANHOLE TOPS IN UNIMPROVED RIGHTS-OF-WAY TO BE SIX INCHES ABOVE FINISHED GRADE.
 14. THE CONTRACTOR SHALL NOTIFY THE CONSTRUCTION DIVISION BY TELEPHONE, MADISON 5-4141, EXT. 8551 AT LEAST TWENTY-FOUR HOURS BEFORE STARTING ANY WORK UNDER THIS CONTRACT.
 15. STANDARD SPECIFICATIONS DATED MAY 26 1962 SHALL APPLY IN THE CONSTRUCTION OF THIS PROJECT.
 16. IF DURING THE COURSE OF CONSTRUCTION IT IS DETERMINED THAT THERE IS LESS THAN FOUR FEET OF COVER OVER THE TOP OF A MAIN LINE OR HOUSE LATERAL V.C.P. SEWER WHICH IS NOT INDICATED ON THE PLANS, THIS PIPE SHALL BE ENCASED PER S-9-172, CASE III, UNLESS OTHERWISE APPROVED BY THE COUNTY ENGINEER.
 17. ALL STATE AND LOCAL TRENCH SAFETY DEVICES WILL BE RIGIDLY ENFORCED.

NO CONNECTIONS FOR THE DISPOSAL OF INDUSTRIAL WASTES SHALL BE MADE TO SEWERS SHOWN ON THESE DRAWINGS WITHOUT WRITTEN PERMISSION FROM THE CHIEF ENGINEER AND GENERAL MANAGER OF THE COUNTY SANITATION DISTRICTS.

P.C. 6414-B PAGE 2

NO CHARGE FOR CONNECTIONS
DOUBLE SCALE

32998



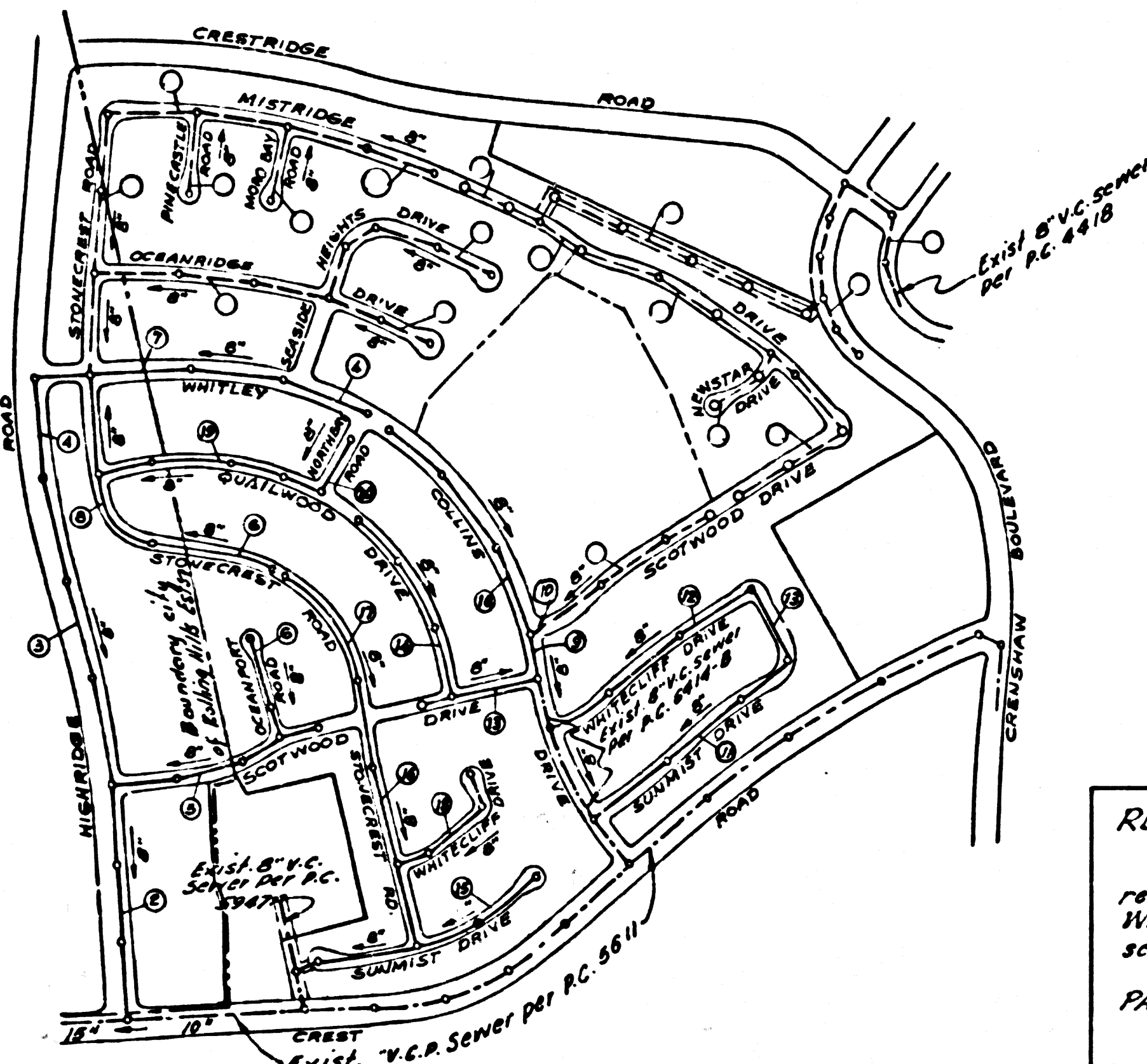
DOUBLE SCALE
LOMITA BLDG. DIST. NO. 12

PROFILE ALIGNMENT AND GRADE OF
SANITARY SEWERS PAGE 1
TO BE CONSTRUCTED IN
P.C. 6414-C
PAGE 1
J.N. 0359.41

TRACT NO. 27789
PRIVATE CONTRACT NO. 6414-C

W.S. 27
11 SHEETS; 20 PAGES
SCALE: VERT. 1"=6'
HORIZ. 1"=40'
DEC. 1, 1962
PREPARED IN THE OFFICES OF
MCINTIRE & QUIROS INC.
BY: *J. Quiros*
REG. C. E. NO. 2583
FOR LEGEND SEE PLAN NO. S-A-64

33766



BENCH MARK
BM-4402
LOS ANGELES COUNTY SUR. MON. MKD.
"BM 20-7 1952 RESS869" IN 12" CONC. POST 4"
ABOVE GROUND @ N.E. COR. CREST RD. / CRENSHAW BLVD.
92.5 FT. N'LY FROM CTR. P.V.M.T. # 40 FT. N'LY FROM CTR.
P.V.M.T. 55.3 FT. EAST OF P.P. # 1036438 E. UNDER GUY CABLE.

REVISION July 9, 1962
PAGE 10: Extended main line in
Scotwood Dr. from Sta. 0+00
to Sta. 0+52.01 page 10
BY: *Ralph Schab*
APPROVED: *Ralph Schab*
OFFICE OF COUNTY ENGINEER

REVISIONS (June 5, 1963)
The following were made to comply with a tentative
rehabilitation of a portion of Tract No. 27789 north of
Whitley Collins Drive due to the relocation of the
school site to the northwest corner of the tract.
PAGE 4-B: (a) Extended main line 12' from sta.
12+52.85 to sta. 12+43.85.
(b) Revised locations of H.L.'s and stationed
each (North side only).
PAGE 7: (a) Deleted 8' stub to north of J.C. Sta. 27700
(b) Revised grades to raise sewer between sta.
0+48.00 and sta. 0+52.85.
(c) Revised locations of H.L.'s; added 3 H.L.'s; and
stationed all. (North side only).
PAGE 8: Revised grades to raise sewer between sta.
0+48.00 and sta. 0+43.85.
PAGE 10: Revised locations of H.L.'s; added 3 H.L.'s;
and stationed all. (Northwest side only).
PAGE 2: Deleted H.L. to 4' 4.85, changed main line 3059 h.c.
BY: *J. Quiros*, R.E. 5535
APPROVED: *Ralph Schab*, R.E. 13900
OFFICE OF COUNTY ENGINEER

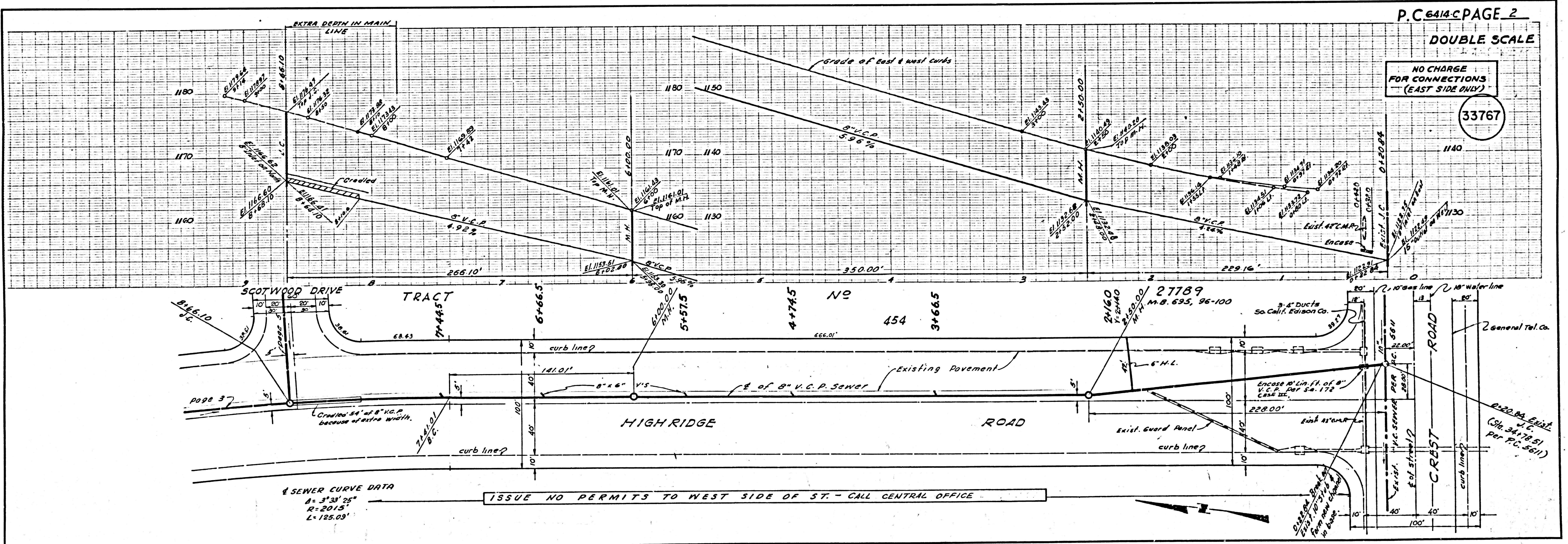
- NOTES:
1. PROVIDE STAKES ON THE PROPERTY LINE OR PROPERTY LINES PRODUCED AT RIGHT ANGLES TO THE SEWER LINE AT THE CENTER LINE OF EACH MANHOLE.
 2. NO REPRESENTATIVE OF THE COUNTY ENGINEER WILL SURVEY OR LAY OUT ANY PORTION OF THE WORK.
 3. THE PRIVATE ENGINEER SHALL FURNISH THE COUNTY ENGINEER WITH GRADE SHEETS AND STATIONING FOR ALL HOUSE LATERALS AND Y BRANCHES AND SHALL PROVIDE STAKES FOR THEM AT THEIR PROPER LOCATIONS WITH STATIONING PLAINLY MARKED. ANY CHANGE IN LOCATION SHALL BE REQUESTED IN WRITING BY THE PRIVATE ENGINEER. ALL HOUSE LATERALS SHALL BE CONSTRUCTED IN A STRAIGHT ALIGNMENT AT RIGHT ANGLES FROM THE MAIN LINE SEWER EXCEPT AS SHOWN ON THE DRAWING. ANY CHANGE IN ALIGNMENT SHALL BE REQUESTED IN WRITING BY THE PRIVATE ENGINEER. THE PRIVATE ENGINEER SHALL FURNISH THE HOUSE LATERAL DEPTH AT THE PROPERTY LINE BELOW THE TOP OF CURB ELEVATION FOR EACH HOUSE LATERAL ON THE GRADE SHEET.
 4. NO REVISIONS SHALL BE MADE IN THESE PLANS WITHOUT THE APPROVAL OF THE COUNTY ENGINEER.
 5. USE STANDARD MANHOLE FRAMES AND COVERS, S-117.
 6. USE EXTRA STRENGTH PIPE, ALL PIPE IS STANDARD DEPTH, EXCEPT AS NOTED.
 7. USE MECHANICAL COMPRESSION JOINTS FOR ALL V.C.P. JOINTS PER SPEC. SECS. M & N, 49.
 8. RESURFACE ALL TRENCH WITHIN PAVED AREA TO MEET L.A. COUNTY ROAD DEPT. OR CALIF. STATE HIGHWAY REQUIREMENTS IN ACCORDANCE WITH PERMITS.
 9. ENCASE FOUR FEET OF SEWER AT POINTS OF INTERFERENCE WITH POLES, CASE III, S-172.
 10. HOUSE LATERALS TO BE CONSTRUCTED WITH INVERTS AT PROPERTY LINE 6 FEET BELOW CURB GRADE EXCEPT AS NOTED.
 11. ALL STRUCTURES SHALL BE BRICK SEWER STRUCTURES S-104 PRECAST CONCRETE MANHOLES PER S.C. 185 OR S.C. 173 MAY BE USED AS AN ALTERNATE IN LOCATIONS APPROVED BY THE COUNTY ENGINEER.
 12. FOR ALLOWABLE LEAKAGE TEST USE FORMULA NO. 10 PER SPEC. SEC. 14.
 13. MANHOLE TOPS IN UNIMPROVED RIGHTS-OF-WAY TO BE SIX INCHES ABOVE FINISHED GRADE.
 14. THE CONTRACTOR SHALL NOTIFY THE CONSTRUCTION DIVISION BY TELEPHONE, MADISON 3-4747, EX 81-851 AT LEAST TWENTY-FOUR HOURS BEFORE STARTING ANY WORK UNDER THIS CONTRACT.
 15. STANDARD SPECIFICATIONS DATED MAY 22, 1962 SHALL APPLY IN THE CONSTRUCTION OF THIS PROJECT.
 16. NO CONSTRUCTION WILL BE PERMITTED IN FILLED AREAS UNLESS CERTIFICATION IS SUBMITTED TO THE CONSTRUCTION DIVISION OF THE COUNTY ENGINEER DEPT. THAT COMPACTION IS GREATER THAN 80%.
 17. IF COMPACTION IS GREATER THAN 80% CRADLING OR SPECIAL MANHOLE BASES ARE NOT REQUIRED HOWEVER MECHANICAL COMPRESSION JOINTS MUST BE USED IN FILLED AREAS.
 18. IF COMPACTION IS LESS THAN 80% THE SEWER SHALL BE CRADLED PER S.C. 166 OR HAVE SPECIAL BASE COURSE PER S.C. 173 CASE III SPECIAL MANHOLE BASES MUST BE INSTALLED PER S.C. 185 AS INDICATED ON PLANS.
 19. ALL STATE & LOCAL TRENCH SAFETY ORDERS WILL BE RIGIDLY ENFORCED.

NO CONNECTIONS FOR THE DISPOSAL OF INDUSTRIAL WASTES SHALL BE MADE TO SEWERS SHOWN ON THESE DRAWINGS WITHOUT WRITTEN PERMISSION FROM THE CHIEF ENGINEER AND GENERAL MANAGER OF THE COUNTY SANITATION DEPARTMENT.
NO CHARGE FOR CONNECTIONS EXCEPT AS NOTED
L. L. Linton 5-9-63

NOTE:
NUMBERS IN CIRCLES INDICATE PAGE NUMBERS
INDEX MAP
TRACT NO 27789
SCALE 1"=600'
P.C. 6414-C

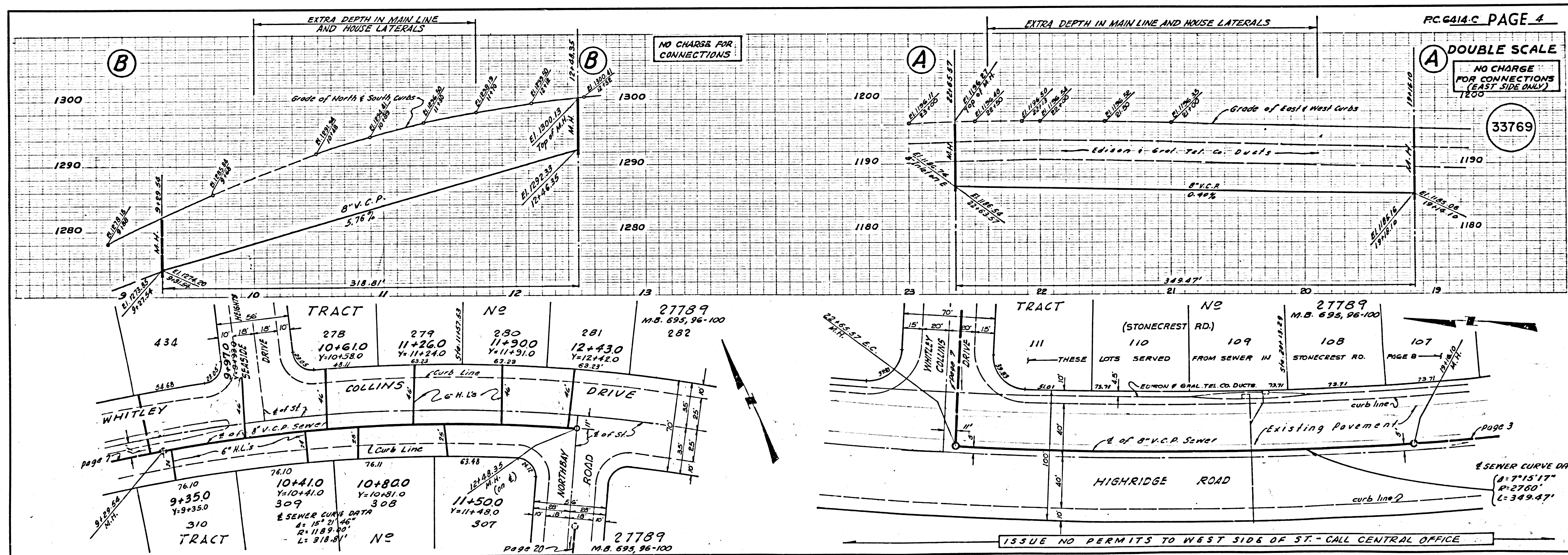
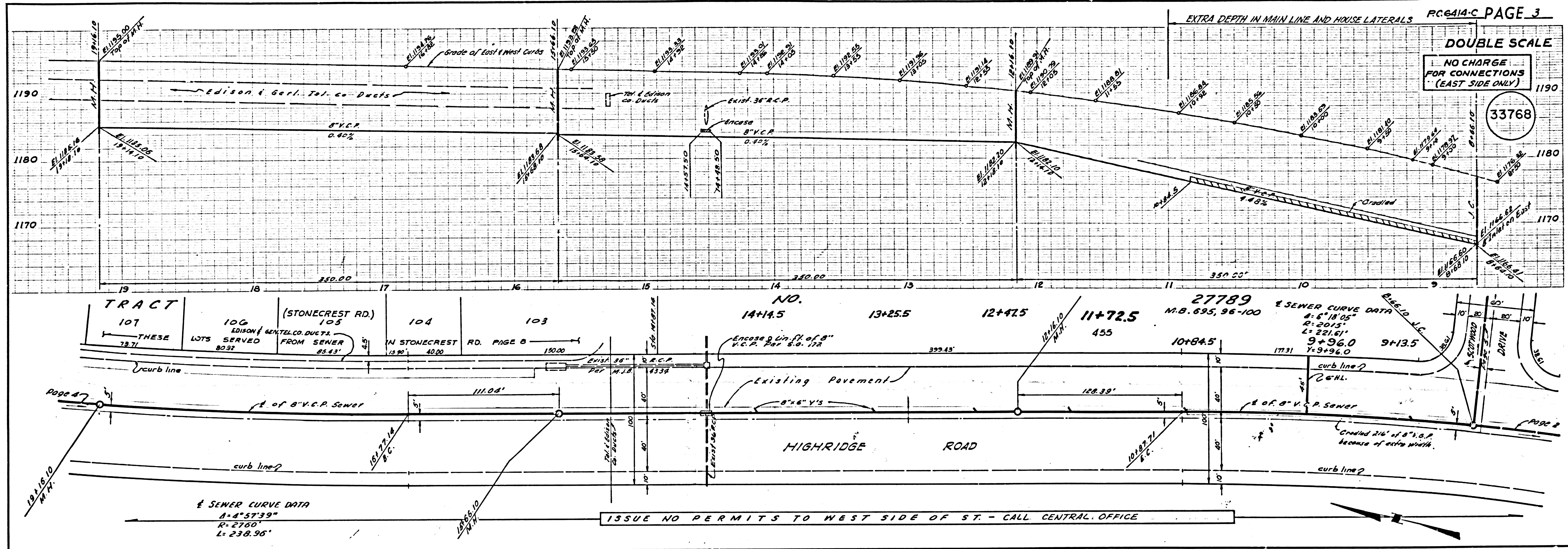
NOTE:
GRADES TO WHICH THIS IMPROVEMENT IS TO BE CONSTRUCTED ARE SHOWN ON PLANS AND PROFILES. GRADE POINTS FOR TOP OF CURBS, CENTER LINE OF STREETS, OR CENTER LINE OF ALLEYS ARE SHOWN BY CIRCLES ON PROFILES. AT ALL POINTS BETWEEN DESIGNATED POINTS THE GRADE SHALL BE ESTABLISHED SO AS TO CONFORM TO A STRAIGHT LINE DRAWN BETWEEN SAID DESIGNATED POINTS.
ELEVATIONS ARE IN FEET ABOVE U.S.C. & G.S. SEA LEVEL DATUM OF 1929.
THIS DRAWING AND THE DATA HEREON ARE HEREBY MADE A PART OF THE SPECIFICATIONS.
WORK SHALL BE CONSTRUCTED ACCORDING TO SPECIFICATIONS ON FILE IN THE OFFICE OF THE COUNTY ENGINEER AND SHALL BE PROSECUTED ONLY IN THE PRESENCE OF THE COUNTY ENGINEER.
BEFORE WORK CAN BE STARTED, THE CONTRACTOR MUST OBTAIN A PERMIT TO EXCAVATE IN COUNTY STREETS FROM THE L.A. COUNTY ROAD DEPT., DISTRICT OFFICE NO. 3 AND PAY A FEE TO THE COUNTY ENGINEER ROOM 310 COUNTY ENGINEER BLDG. 108 W. 2ND STREET SUFFICIENT TO COVER THE COST OF CONSTRUCTION INSPECTION AND RECORD PLANS.
APPROVAL OF THIS PLAN BY THE COUNTY OF LOS ANGELES DOES NOT CONSTITUTE A REPRESENTATION AS TO THE ACCURACY OF THE LOCATION OF OR THE EXISTENCE OR NON-EXISTENCE OF ANY UNDERGROUND UTILITY PIPE, OR STRUCTURE WITHIN THE LIMITS OF THIS PROJECT. THIS NOTE APPLIES TO ALL PAGES.
IF WORK IS TO BE DONE IN A STATE HIGHWAY, A PERMIT MUST BE OBTAINED FROM THE STATE OF CALIFORNIA, DIVISION OF HIGHWAYS, 128 SOUTH SPRING STREET.

COUNTY OF LOS ANGELES, CALIFORNIA
APPROVED: JOHN A. LAMBLE, COUNTY ENGINEER
APPROVED: J.D. MARKLUNST, CHIEF ENGINEER
CO. SAN. DIST. NO. 2
BY: *J. E. Kuler*, ASST. SANITATION ENGINEER
BY: *J. D. Marklunst*, OFFICE ENGINEER
CHECKED BY: *J. K. Onda* 5-14-63
OFFICE OF COUNTY ENGINEER, REG. C. E. NO. 3656
SUBMITTED BY: *Jack C. Loring*, VALLEY REGIONAL ENGINEER

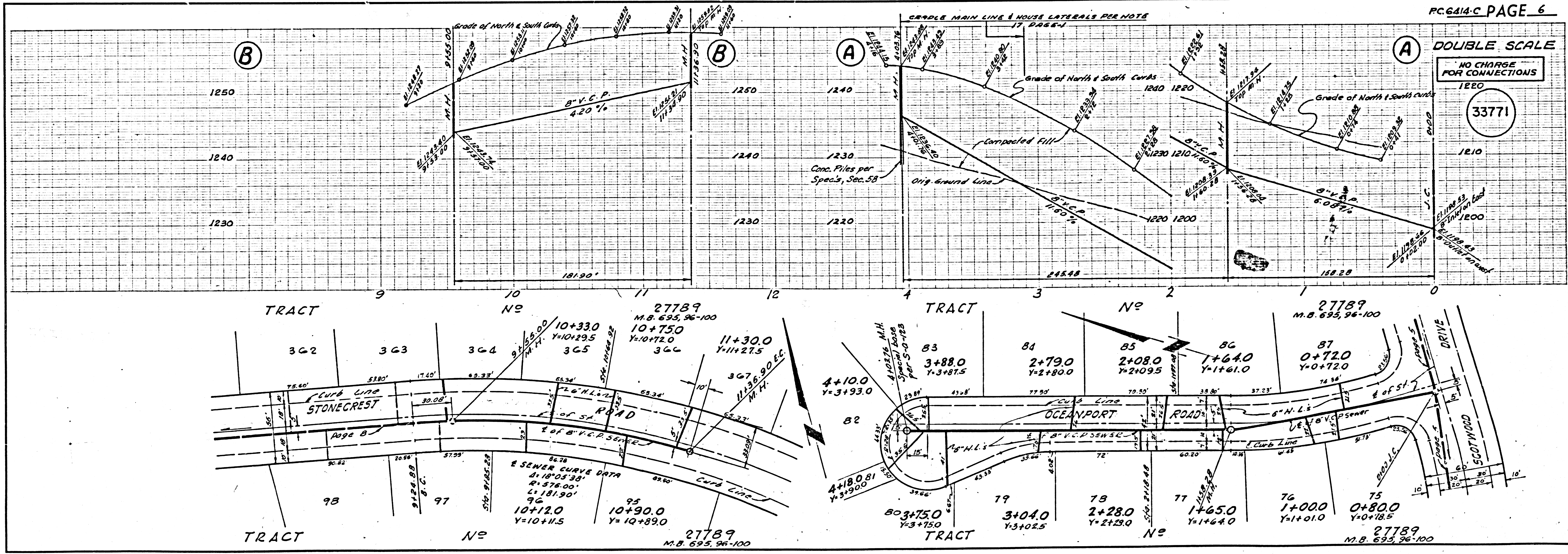
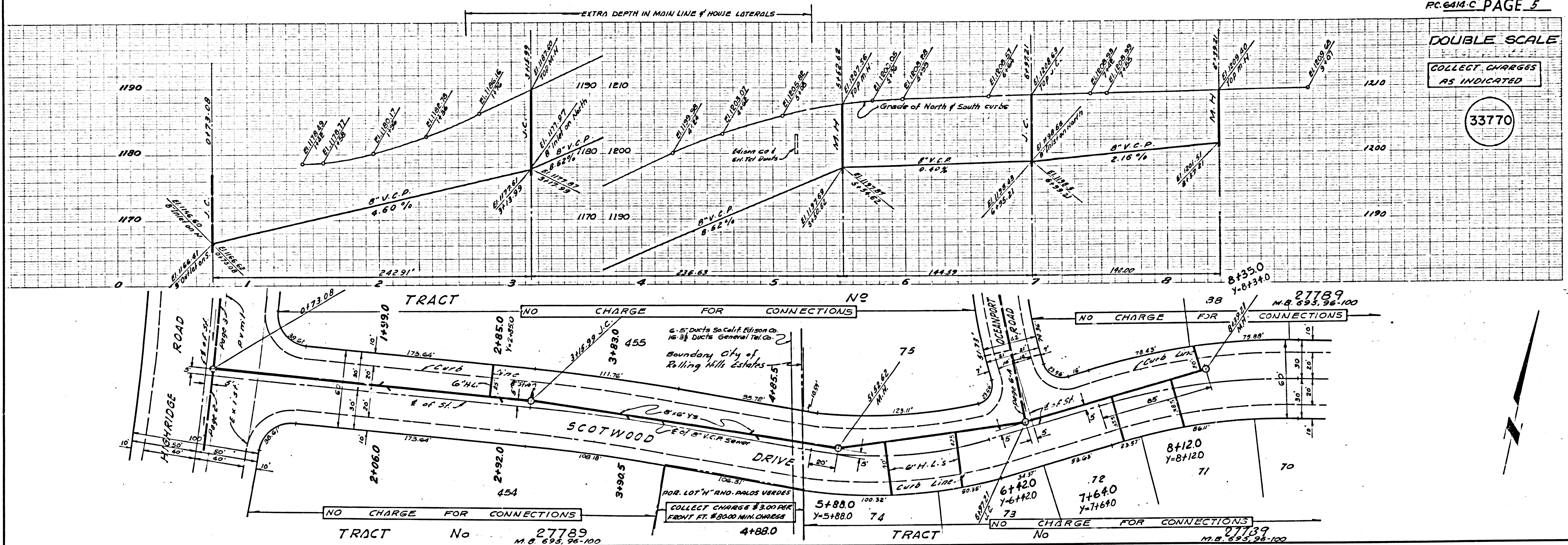


SEWER CURVE DATA
A = 3' 33" 25"
R = 201.5'
L = 125.09'

ISSUE NO PERMITS TO WEST SIDE OF ST. - CALL CENTRAL OFFICE

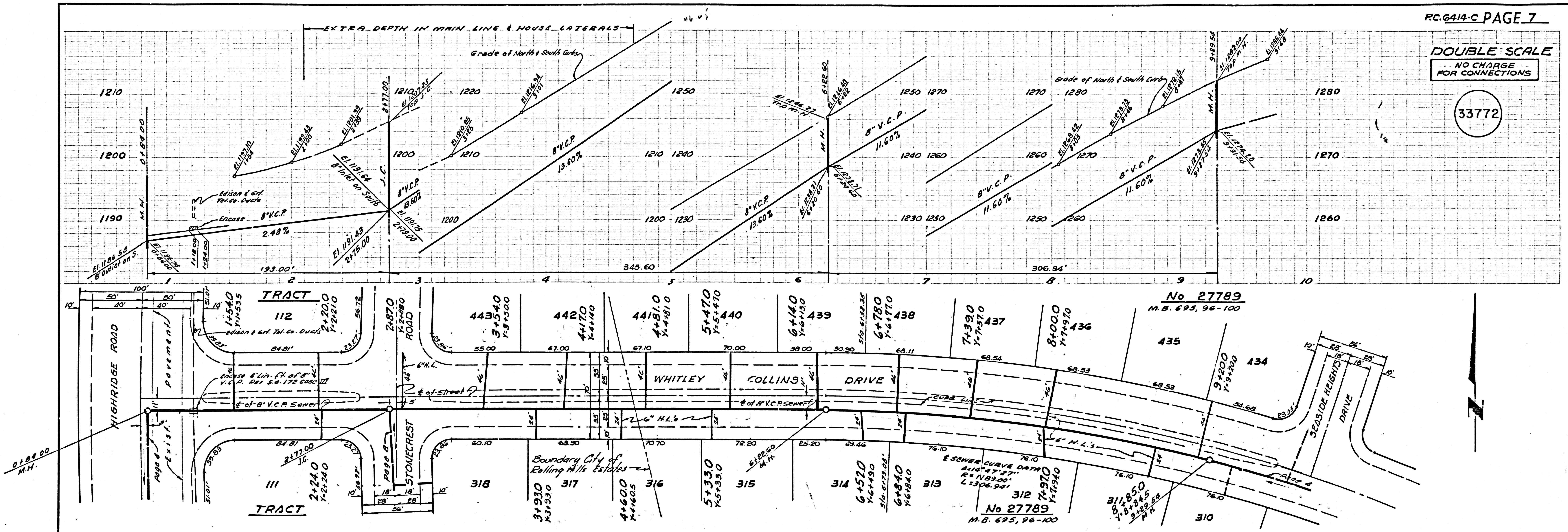


PC 6414-C



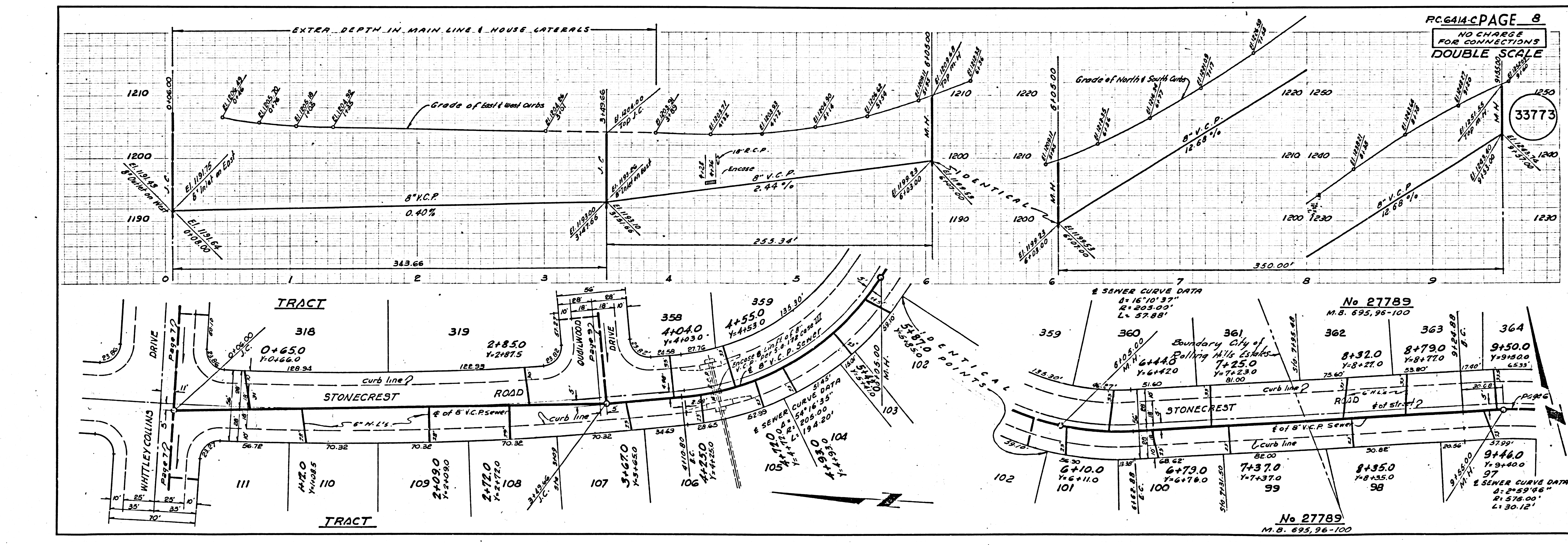
DOUBLE SCALE
NO CHARGE
FOR CONNECTIONS

33772



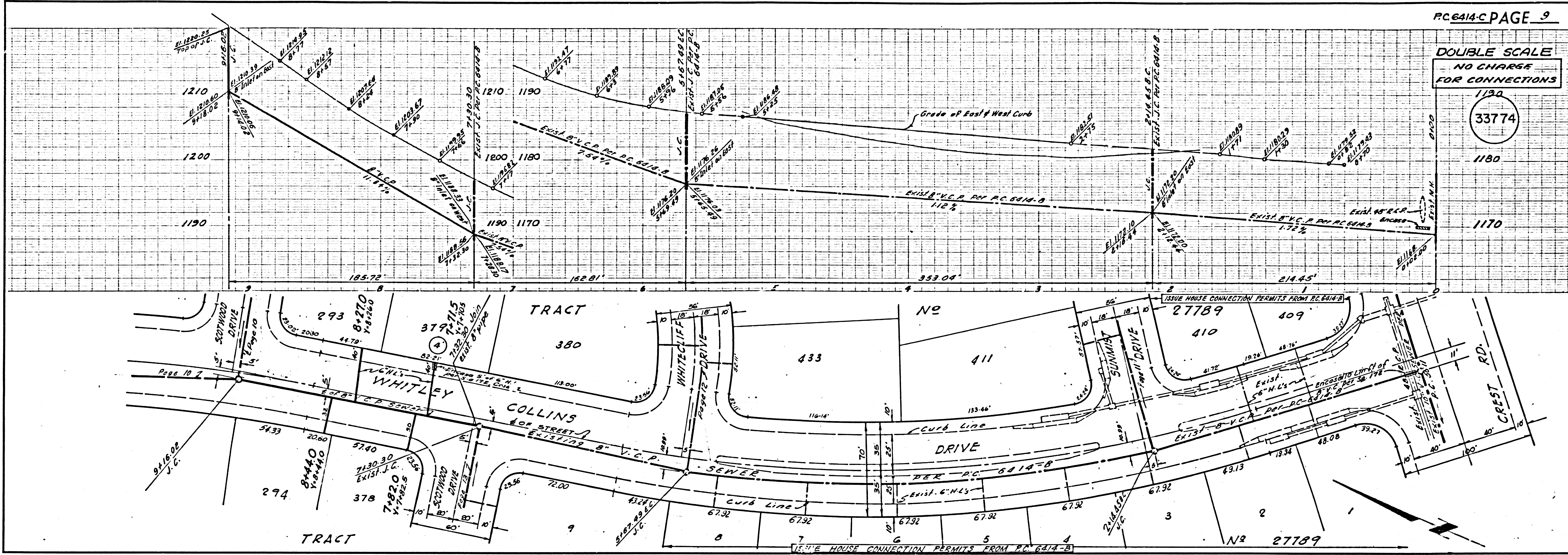
DOUBLE SCALE
NO CHARGE
FOR CONNECTIONS

33773



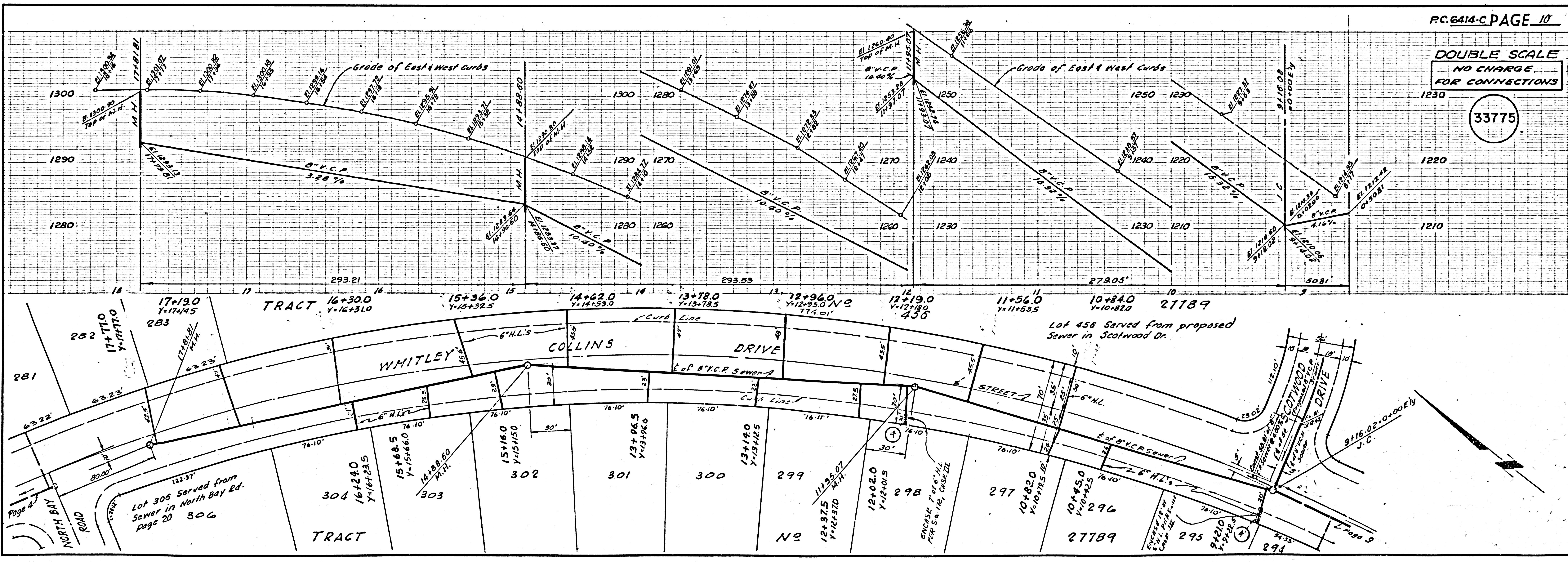
DOUBLE SCALE
NO CHARGE
FOR CONNECTIONS

33774



DOUBLE SCALE
NO CHARGE
FOR CONNECTIONS

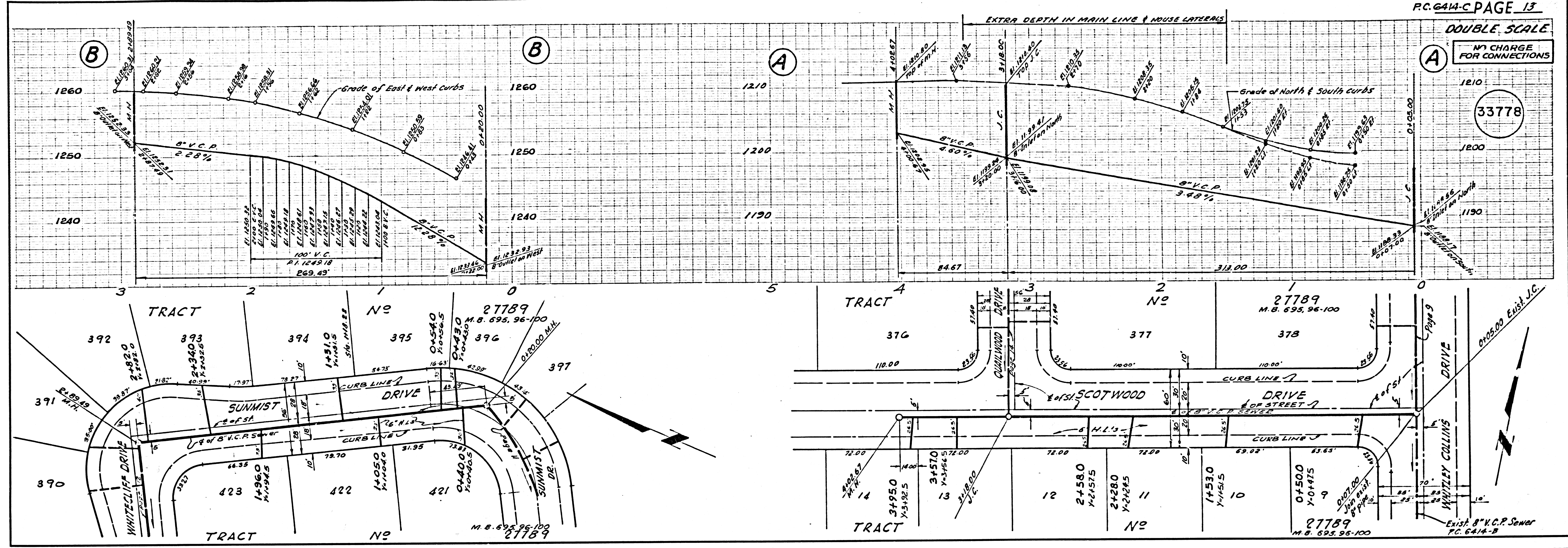
33775



DOUBLE SCALE

NO CHARGE FOR CONNECTIONS

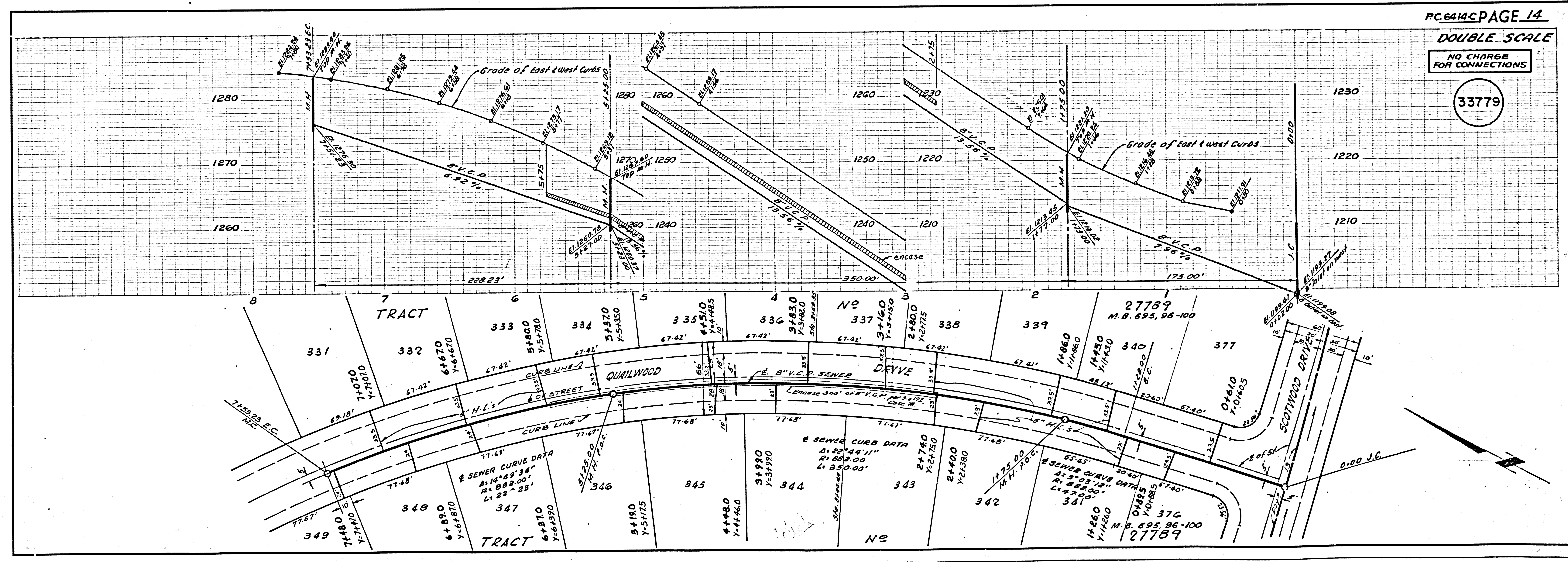
33778



DOUBLE SCALE

NO CHARGE FOR CONNECTIONS

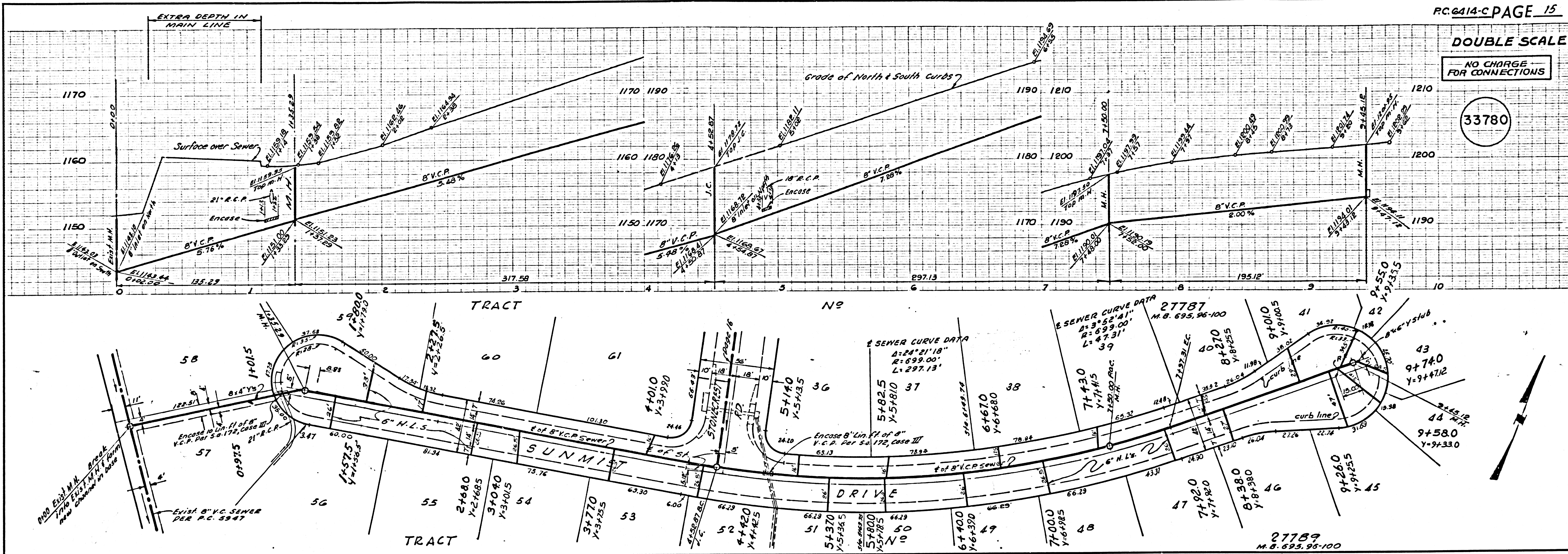
33779



DOUBLE SCALE

NO CHARGE FOR CONNECTIONS

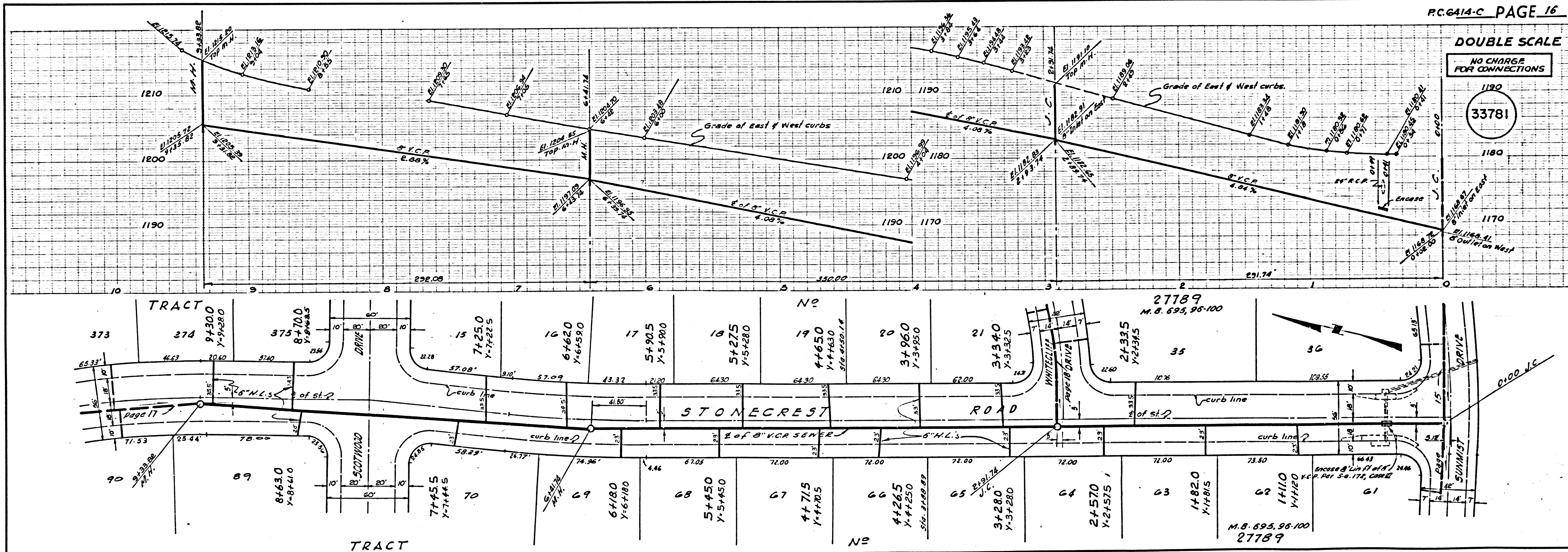
33780



DOUBLE SCALE

NO CHARGE FOR CONNECTIONS

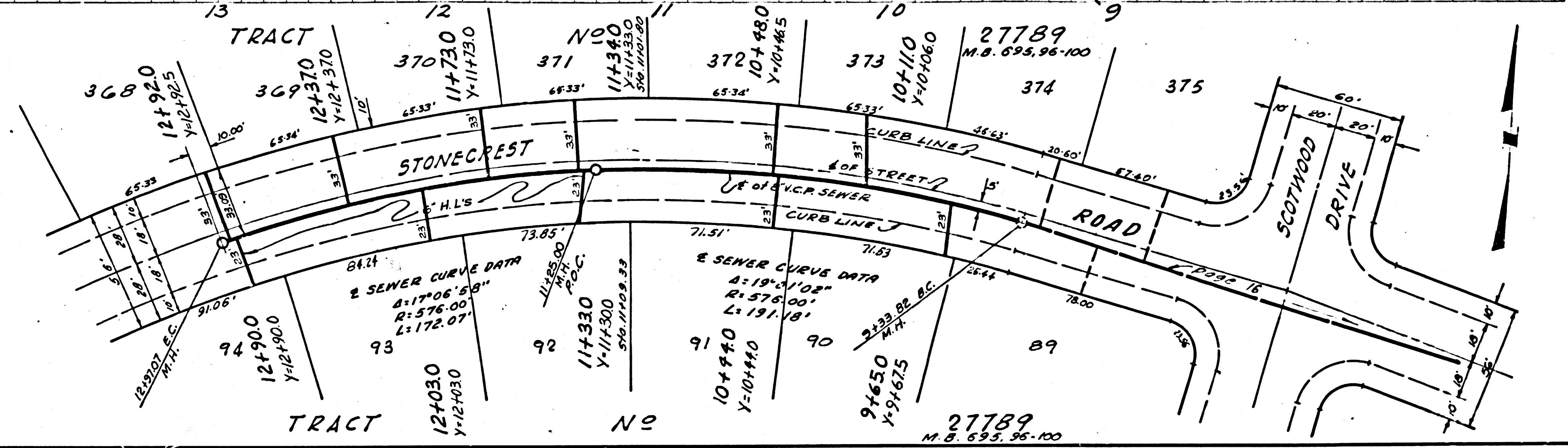
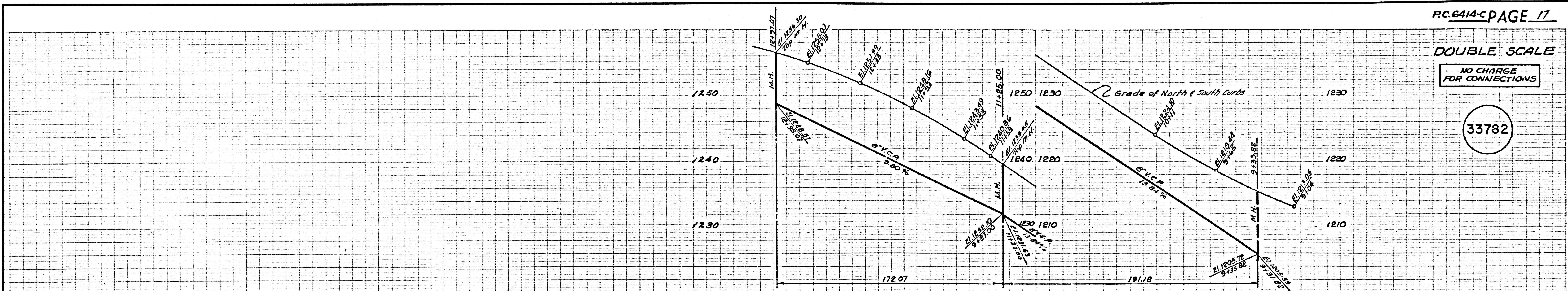
33781



DOUBLE SCALE

NO CHARGE FOR CONNECTIONS

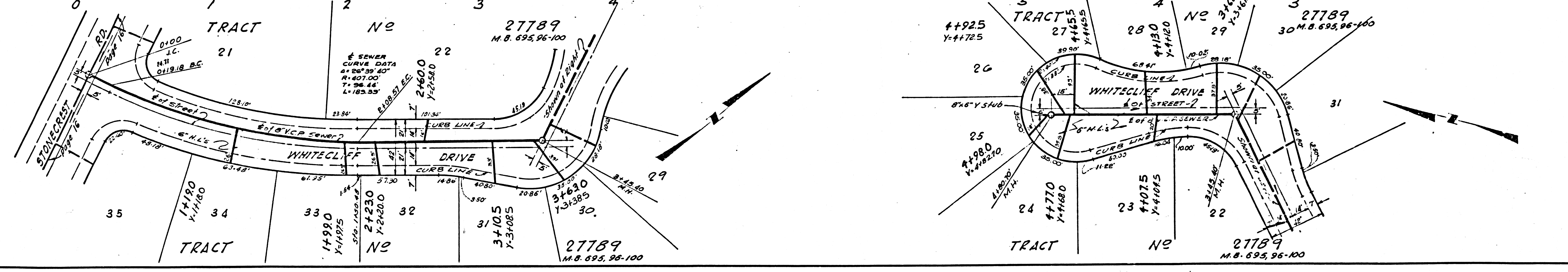
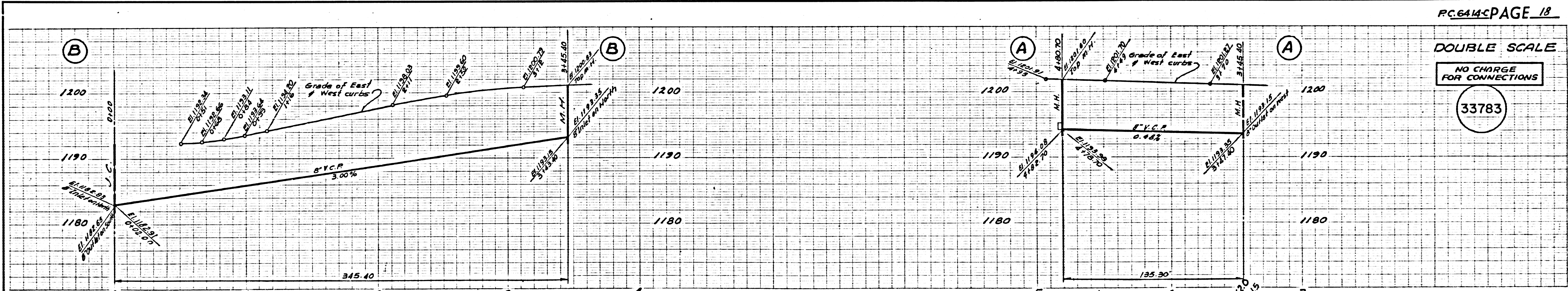
33782



DOUBLE SCALE

NO CHARGE FOR CONNECTIONS

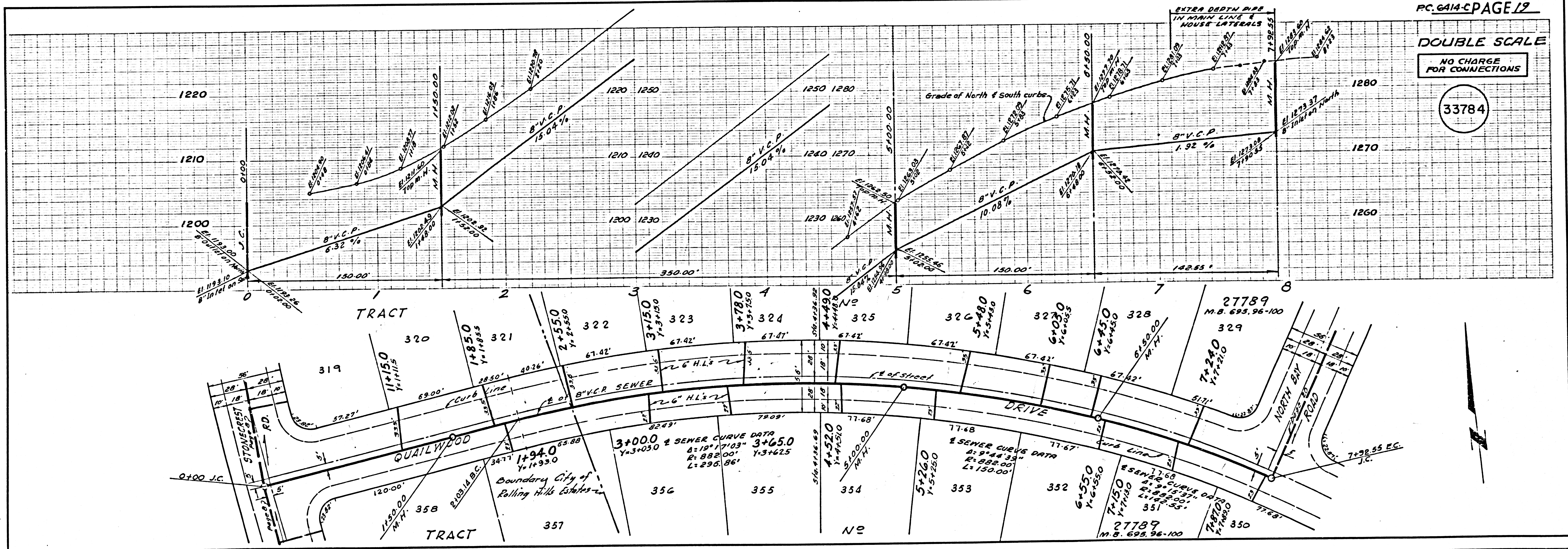
33783



DOUBLE SCALE

NO CHARGE FOR CONNECTIONS

33784



DOUBLE SCALE
NO CHARGE
FOR CONNECTIONS

33785

