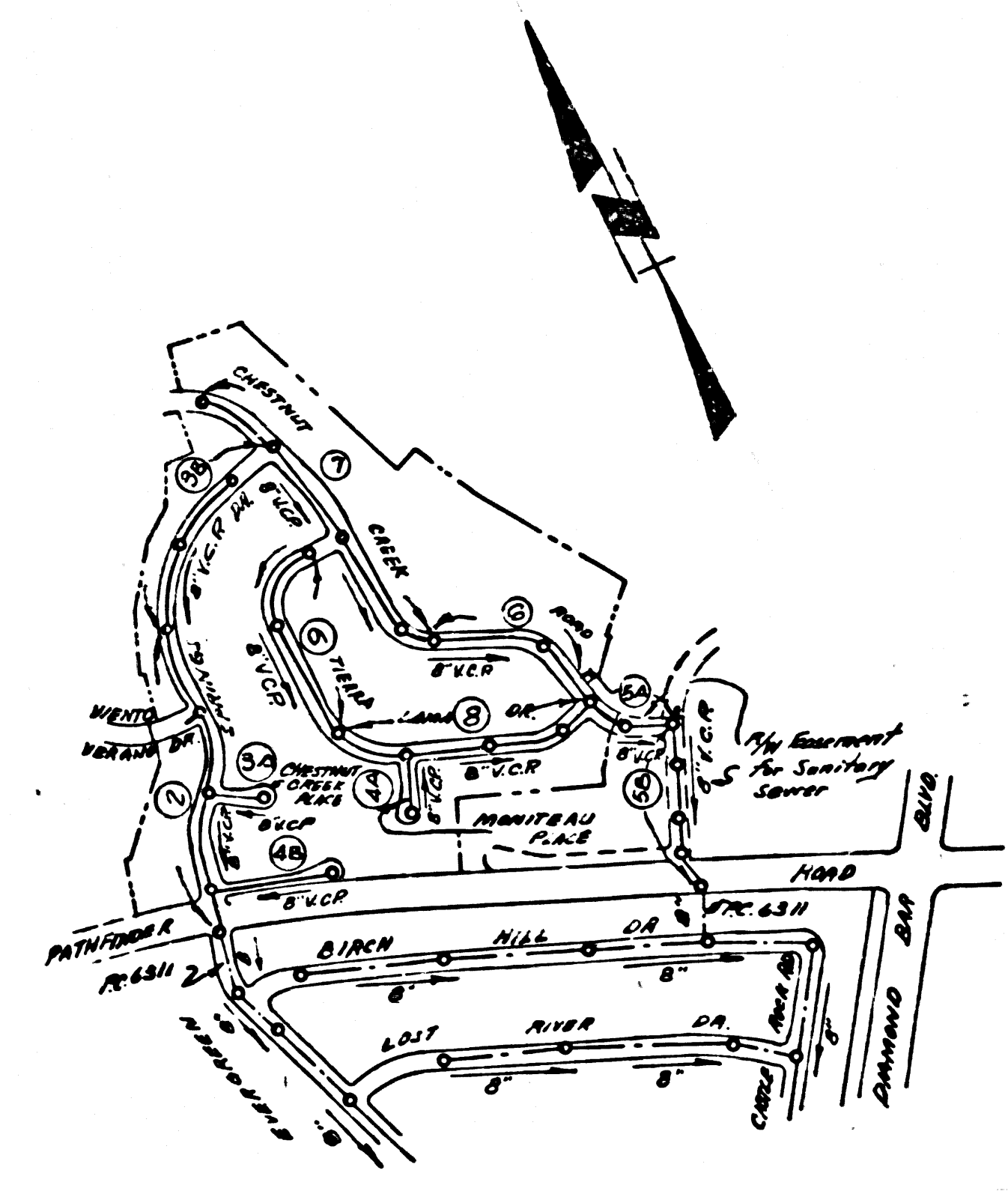


BM. 562089 ELEV. 968.446  
 Beginning of Improvement Company Rd.  
 1/4 Section 16, Township 22 S., Range 12 E.,  
 San Dimas Bldg. Dist. No. 10, R.D. No. 10,  
 in said 8 square, near 1/4 of 1/4 of Sec. 16,  
 within 3 1/2 miles S. & 2 1/2 miles W. of  
 OTTERBEIN QUAD, 1953



INDEX MAP  
 SCALE: 1"=600'  
 P.C. 6416

ISSUE NO HOUSE  
 CONNECTION PERMITS  
 UNTIL P.C. 6311  
 IS ACCEPTED

COLLECT CHARGES  
 AS INDICATED  
 Check 3/11/62 1221-62

UNDERGROUND STRUCTURES

All underground utilities or structures reported by the owner or others and those shown on the records examined are indicated with their approximate location and extent.  
 The owner by accepting these plans or proceeding with improvements pursuant thereto agrees to assume liability and to hold undersigned harmless for any damages resulting from the existence of underground utilities or structures not reported to the undersigned, not indicated on the public records examined, located at variance with that reported or shown on records or otherwise.  
 The contractor is required to take due precautionary measures to protect the utilities or structures shown and any other utilities or structures found at the site. It shall be the Contractor's responsibility to notify the owners of the utilities or structures concerned before starting work.

*W.C. Holzhauser*  
 W.C. Holzhauser, R.C.E. No. 10219

DOUBLE SCALE  
 SAN DIMAS BLDG. DIST. NO. 10

- NOTES:
- PROVIDE STAKES ON THE PROPERTY LINE OR PROPERTY LINES PRODUCED AT RIGHT ANGLES TO THE SEWER LINE AT THE CENTER LINE OF EACH MANHOLE.
  - NO REPRESENTATIVE OF THE COUNTY ENGINEER WILL SURVEY OR LAY OUT ANY PORTION OF THE WORK.
  - THE PRIVATE ENGINEER SHALL FURNISH THE COUNTY ENGINEER WITH REBAR INSETS AND STATIONING FOR ALL HOUSE LATERALS AND VERTICAL CURVES AND SHALL PROVIDE STAKES FOR THEM AT 10 FOOT INTERVALS CONTAINED WITHIN STATIONS. ALL STAKES SHALL BE CONSTRUCTED IN A STRAIGHT ALIGNMENT AT RIGHT ANGLES FROM THE MAIN LINE SEWER. ALL STAKES SHALL BE CONSTRUCTED IN A STRAIGHT ALIGNMENT WITH THE MAIN LINE SEWER. ALL STAKES SHALL BE CONSTRUCTED IN A STRAIGHT ALIGNMENT WITH THE MAIN LINE SEWER.
  - THE PRIVATE ENGINEER SHALL FURNISH THE HOUSE LATERAL DEPTH AT THE PROPERTY LINE BELOW THE TOP OF CURB ELEVATION FOR EACH HOUSE LATERAL ON THE GRADE SHEET.
  - NO REVISIONS SHALL BE MADE IN THESE PLANS WITHOUT THE APPROVAL OF THE COUNTY ENGINEER.
  - USE STANDARD MANHOLE FRAMES AND COVERS, 2-17, EXCEPT AS NOTED.
  - USE EXTRA STRENGTH JOINTS. ALL JOINTS ARE STANDARD DEPTH EXCEPT AS NOTED.
  - USE MECHANICAL CONNECTIONS UNLESS OTHERWISE SPECIFIED IN THESE PLANS.
  - RESURFACE ALL TRENCH WITHIN PAVED AREA TO MEET L.A. COUNTY ROAD DEPT. OR CALIF. STATE HIGHWAY REQUIREMENTS IN ACCORDANCE WITH PERMITS.
  - IF A MANHOLE IS WITHIN THREE FEET OF THE SEWER, THE SEWER SHALL BE IN CURB, AND 3-1/2 INCH CURB, THE REST ON CURB, ONE FROM THE POINT OF INTERSECTION.
  - HOUSE LATERALS TO BE CONSTRUCTED WITH INVERTS AT PROPERTY LINE 6 FEET BELOW CURB GRADE EXCEPT AS NOTED.
  - MANHOLES SHALL BE BUILT SEWER STRUCTURE PER 5-116 ARCHITECT CONCRETE MANHOLES PER 5-116.
  - FOR ALLOWABLE LEAKAGE TEST USE FORMULA NO. 1, SPEC. SEC. 54.
  - MANHOLE TOPS IN UNIMPROVED RIGHTS-OF-WAY TO BE SIX INCHES ABOVE FINISHED GRADE.
  - THE CONTRACTOR SHALL NOTIFY THE CONSTRUCTION DIVISION BY TELEPHONE, MADISON 5477, AT LEAST TWENTY-FOUR HOURS BEFORE STARTING ANY WORK UNDER THIS CONTRACT.
  - IF EVER FOUND WATER IS ENCOUNTERED DURING THE CONSTRUCTION OF THE SEWER, THE U.S.P. SHALL BE USED TO DETERMINE THE DEPTH OF THE WATER TABLE. ALL MECHANICAL CONNECTIONS SHALL BE PER 5-116, SEC. 54.
  - IN ORDERING THE CURB OR CONSTRUCTION OF AN INTERSECTION WITH THERE IS LESS THAN ONE FOOT OF COVER OVER THE TOP OF A MAIN LINE OR HOUSE LATERAL, R.C.A. LATERAL WHICH IS NOT INDICATED ON THE PLANS, THE CURB SHALL BE BUILT PER 5-116, CASE 4, UNLESS OTHERWISE SPECIFIED BY THE COUNTY ENGINEER.
  - CONCRETE MANHOLE BODIES:
    - IN CONSTRUCTION SHALL BE PERMITTED IN UNPAVED AREAS UNLESS ACCEPTABLE CERTIFICATION IS SUBMITTED TO THE CONSTRUCTION DIVISION OF THE COUNTY ENGINEER DEPT. THAT THE FINISHED GRADE IS GREATER THAN 80%.
    - IF THE FINISHED GRADE IS GREATER THAN 80% BUT LESS THAN 90% THE CURB SHALL BE 1-1/2 INCHES THICK AND 1-1/2 INCHES HIGH.
    - IF THE FINISHED GRADE IS GREATER THAN 90% THE CURB SHALL BE 2 INCHES THICK AND 2 INCHES HIGH.
    - IF THE FINISHED GRADE IS GREATER THAN 90% THE CURB SHALL BE 2 INCHES THICK AND 2 INCHES HIGH.

PROFILE ALIGNMENT AND GRADE OF  
 SANITARY SEWERS PAGE 1  
 TO BE CONSTRUCTED IN

TRACT No 26681

PRIVATE CONTRACT NO. 6416

W.S. 39  
 9 SHEETS; 9 PAGES

SCALE: VERT. 1"=6' November, 1962

PREPARED IN THE OFFICES OF  
 DUTCH HOLZHAUER & ASSOCIATES  
 714 Hillman Ave., Alhambra, California

By: *W.C. Holzhauser*  
 REG. C. E. NO. 10219

FOR LEGEND SEE PLAN NO. S.A-64

NOTE:  
 GRADES TO WHICH THIS IMPROVEMENT IS TO BE CONSTRUCTED ARE SHOWN ON PLANS AND PROFILES. GRADE POINTS FOR TOP OF CURBS, CENTER LINE OF STREETS, OR CENTER LINE OF ALLEYS ARE SHOWN BY CIRCLES ON PROFILES. ALL POINTS BETWEEN DESIGNATED POINTS THE GRADE SHALL BE ESTABLISHED SO AS TO CONFORM TO A STRAIGHT LINE DRAWN BETWEEN SAID DESIGNATED POINTS. U.S.C. & G.S. SEA LEVEL DATUM OF 1929.  
 THIS DRAWING AND THE DATA HEREON ARE HEREBY MADE A PART OF THE SPECIFICATIONS.  
 WORK SHALL BE CONSTRUCTED ACCORDING TO SPECIFICATIONS, SERIES 10-1, ON FILE IN THE OFFICE OF THE COUNTY ENGINEER AND SHALL BE PROTECTED BY THE SEAL AND SIGNATURE OF THE COUNTY ENGINEER. BEFORE WORK CAN BE STARTED, THE CONTRACTOR MUST OBTAIN A PERMIT TO EXCAVATE IN COUNTY STREETS FROM THE L.A. COUNTY ROAD DEPT., DISTRICT OFFICE NO. 10, AND PERMIT TO USE THE COUNTY ENGINEER'S ROOM 330 COUNTY ENGINEER BUILDING, 100 WEST SECOND STREET, SAN DIMAS, CALIF. SUFFICIENT TO COVER THE COST OF CONSTRUCTION INSPECTION AND RECORD PLANS.  
 APPROVAL OF THIS PLAN BY THE COUNTY OF LOS ANGELES DOES NOT CONSTITUTE A REPRESENTATION AS TO THE ACCURACY OF THE LOCATION OR THE EXISTENCE OR NON-EXISTENCE OF ANY UNDERGROUND UTILITY PIPE, OR STRUCTURE WITHIN THE LIMITS OF THIS PROJECT. THIS NOTE APPLIES TO ALL PAGES.  
 IF WORK IS TO BE DONE IN A STATE HIGHWAY, A PERMIT MUST BE OBTAINED FROM THE STATE OF CALIFORNIA, DIVISION OF HIGHWAYS, 120 SOUTH SPRING STREET, LOS ANGELES, CALIFORNIA.

COUNTY OF LOS ANGELES, CALIFORNIA

APPROVED, JOHN A. LAMBIE, COUNTY ENGINEER APPROVED, J.D. PARKHURST, CHIEF ENGINEER  
 CO. SAN. DIST. NO.

BY: *R. E. Ke* DIST. SANITATION ENGINEER BY: *E. P. Bennett* OFFICE ENGINEER

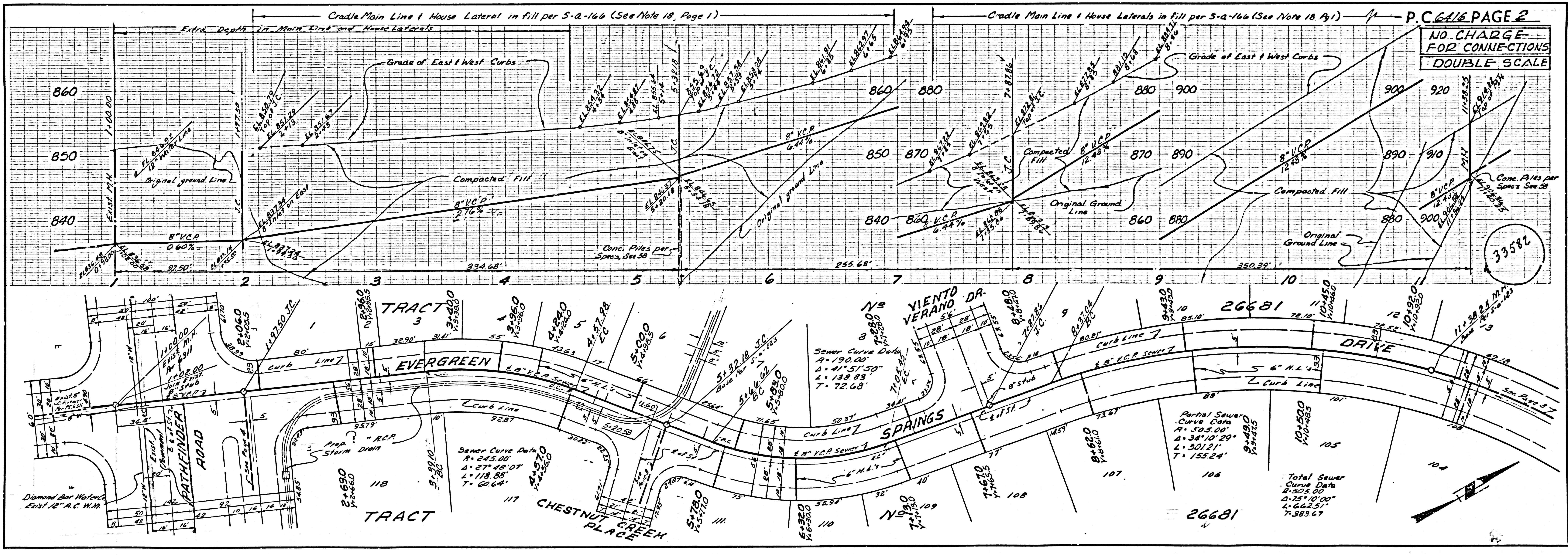
SUBMITTED BY: *W. C. Holzhauser* 12-21-62

CHECKED BY: *W. C. Holzhauser* 12-21-62

J.N. 0359.42

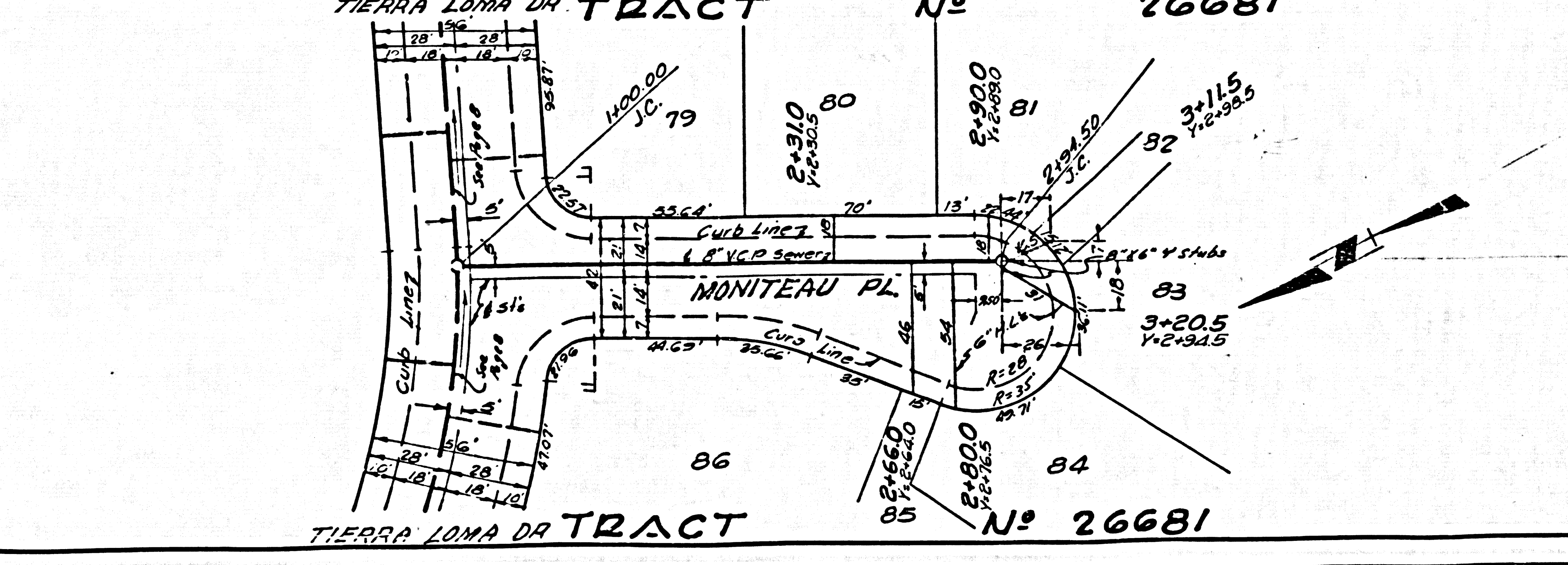
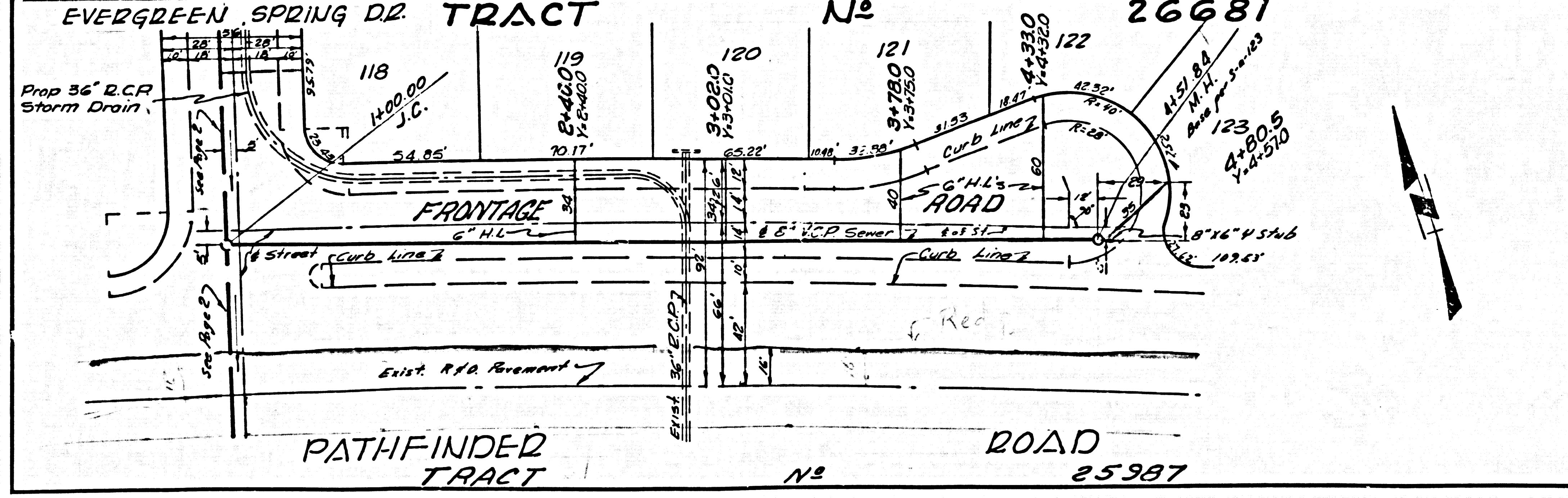
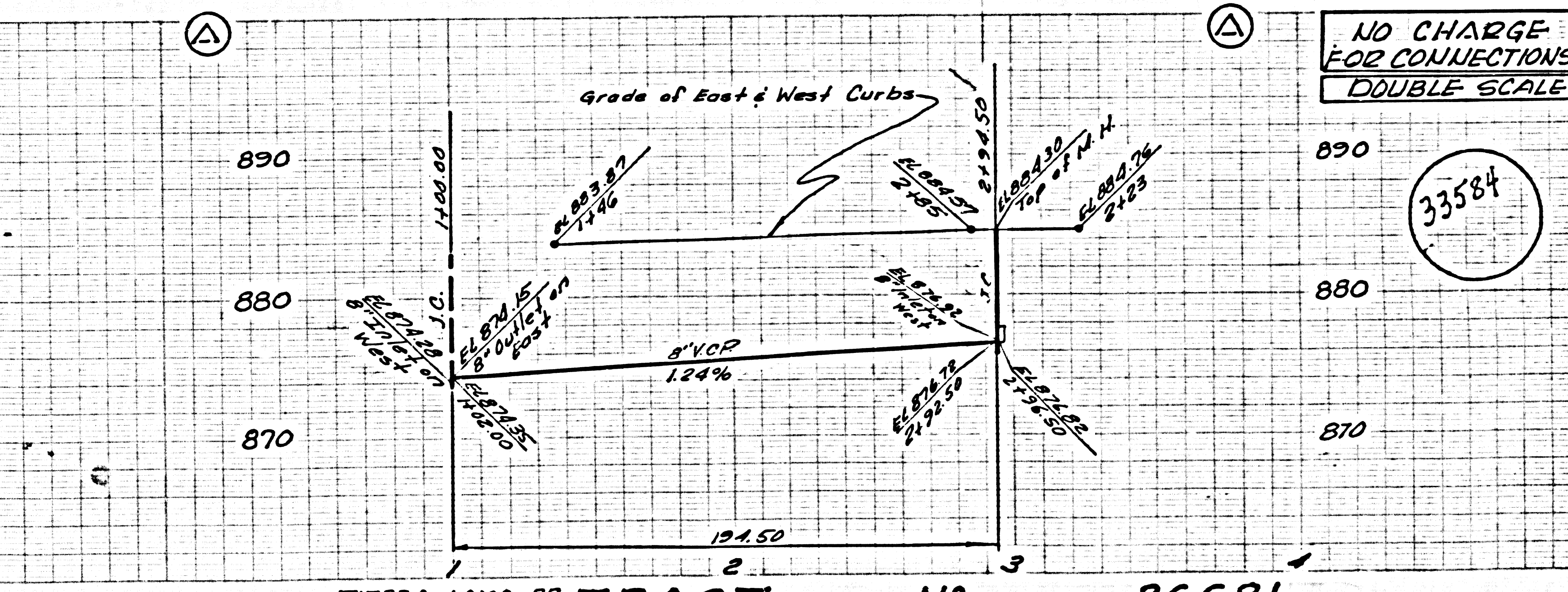
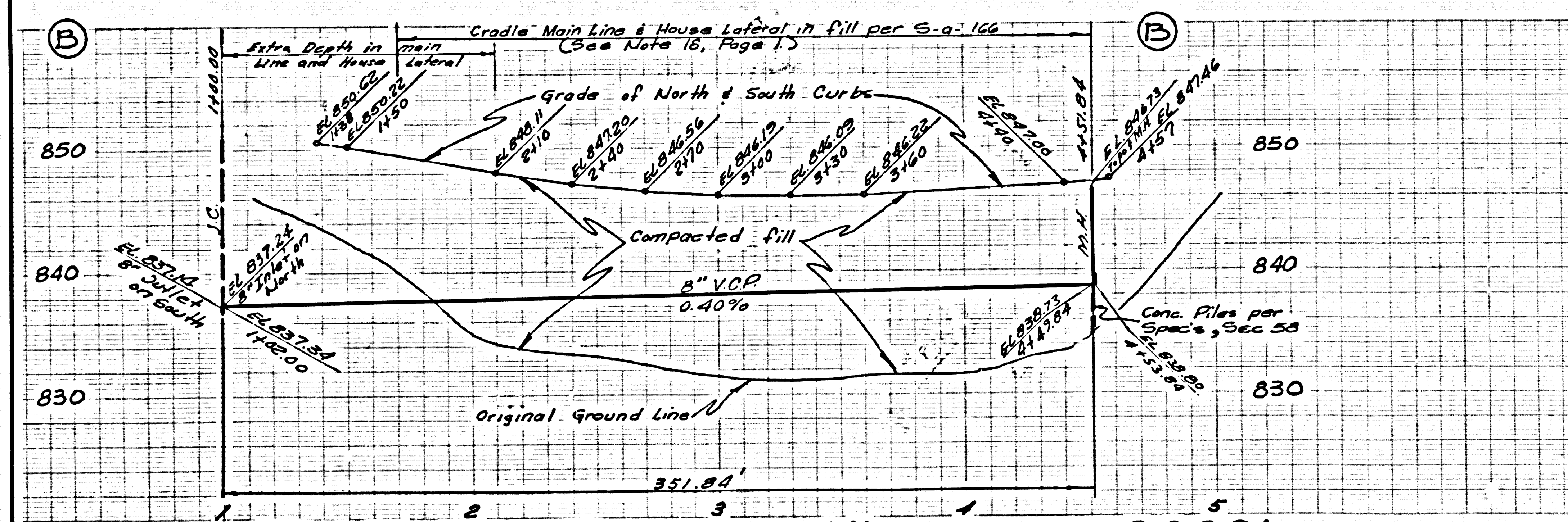
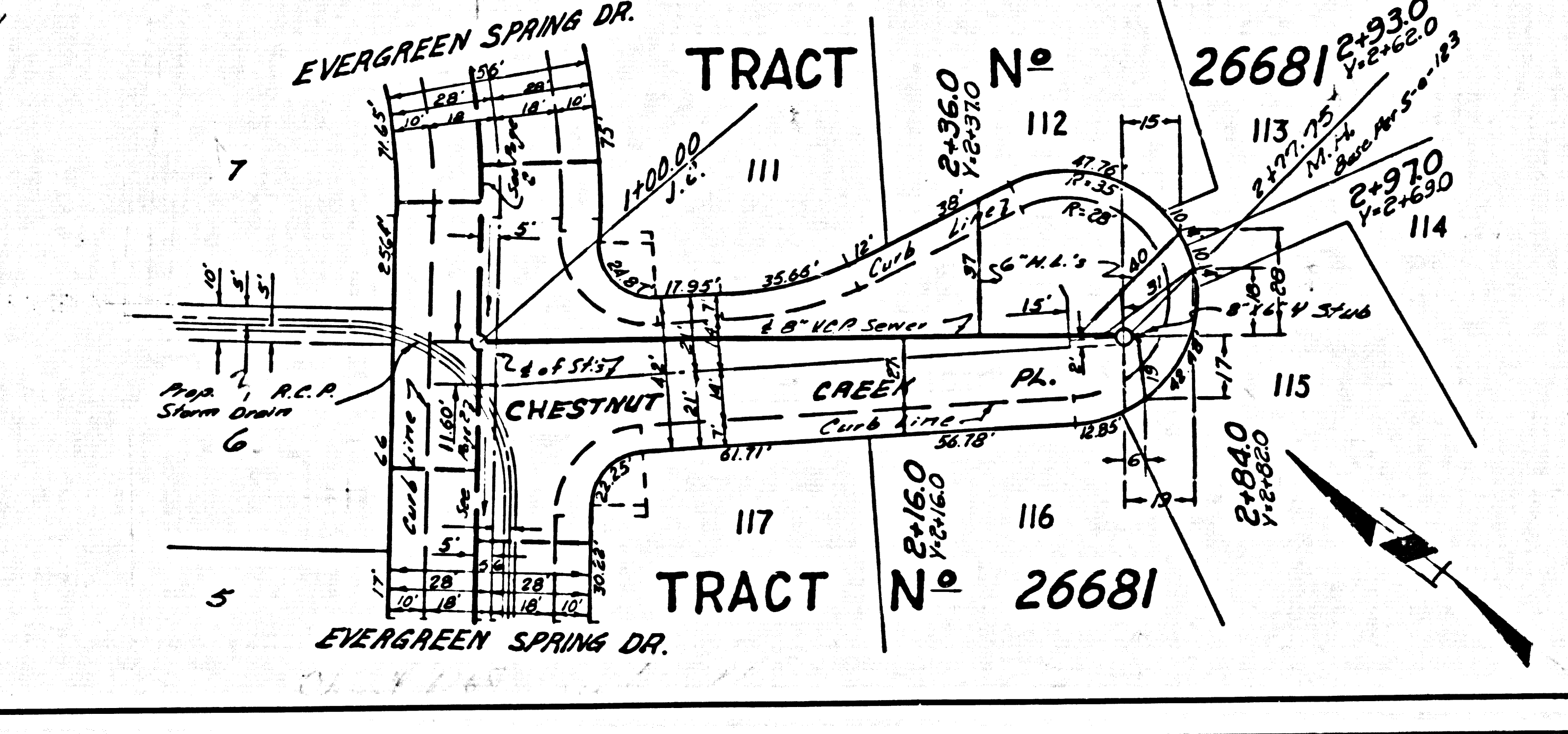
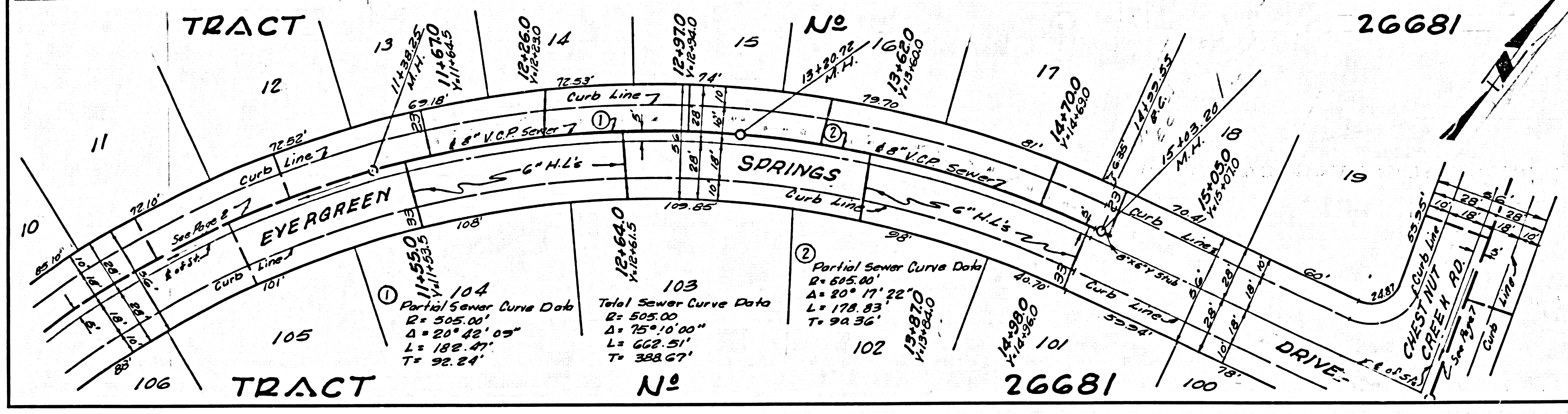
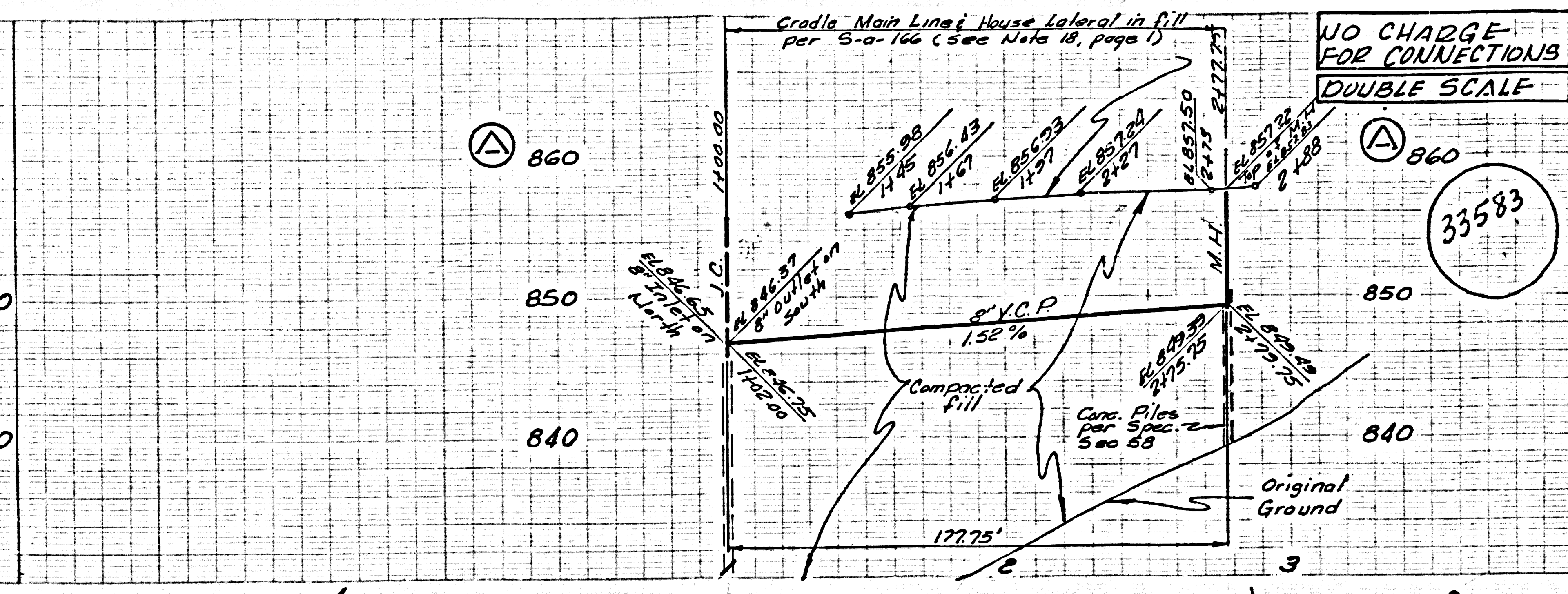
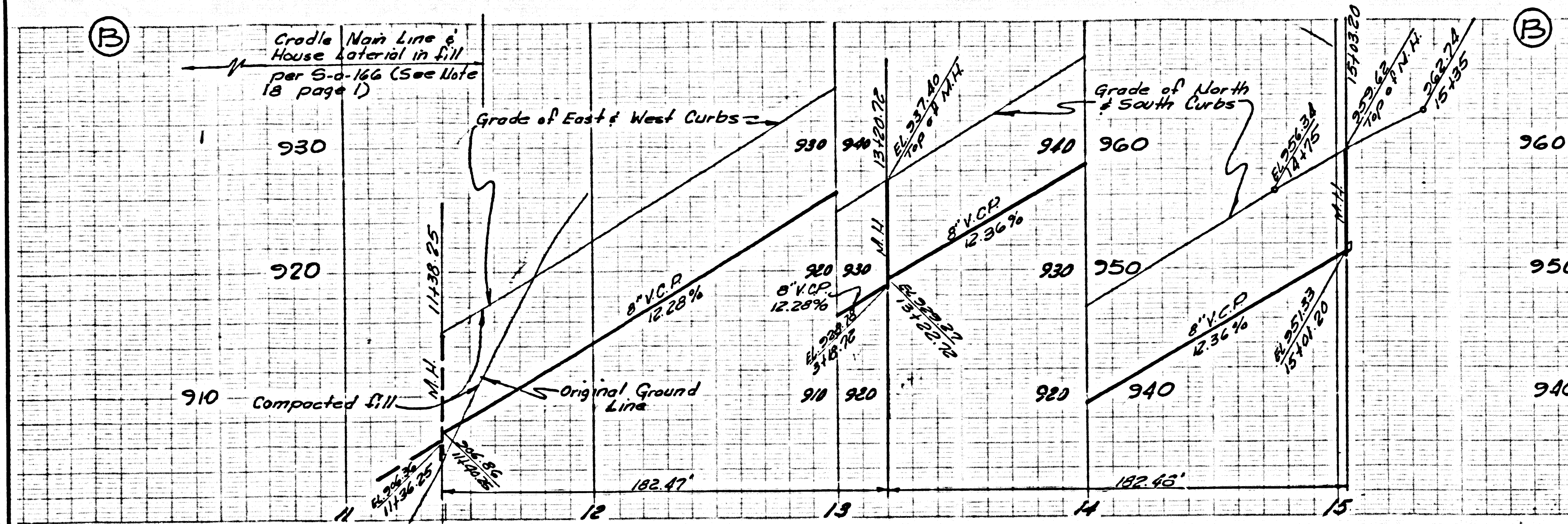
ALL STATE AND LOCAL TRENCH SAFETY ORDERS WILL BE RIGIDLY ENFORCED.

NO CONNECTIONS FOR THE DISPOSAL OF INDUSTRIAL WASTES SHALL BE MADE TO SEWERS SHOWN ON THESE DRAWINGS WITHOUT WRITTEN PERMISSION FROM THE CHIEF ENGINEER AND GENERAL MANAGER OF THE COUNTY SANITATION DISTRICTS.



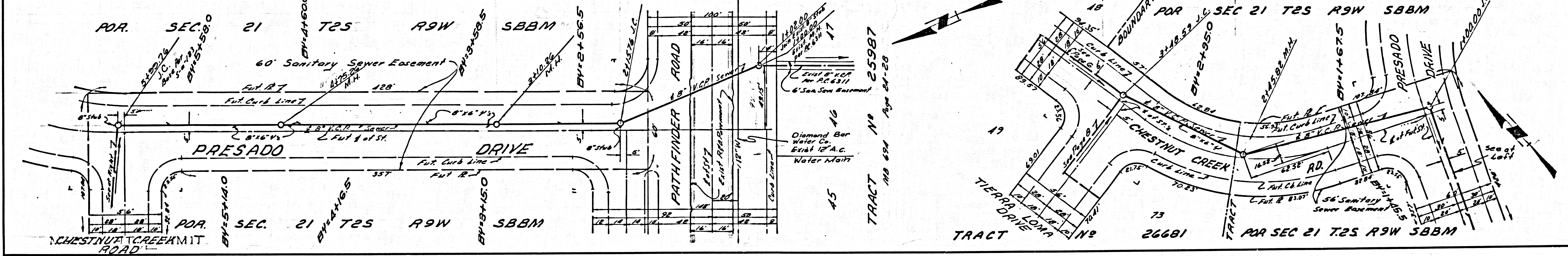
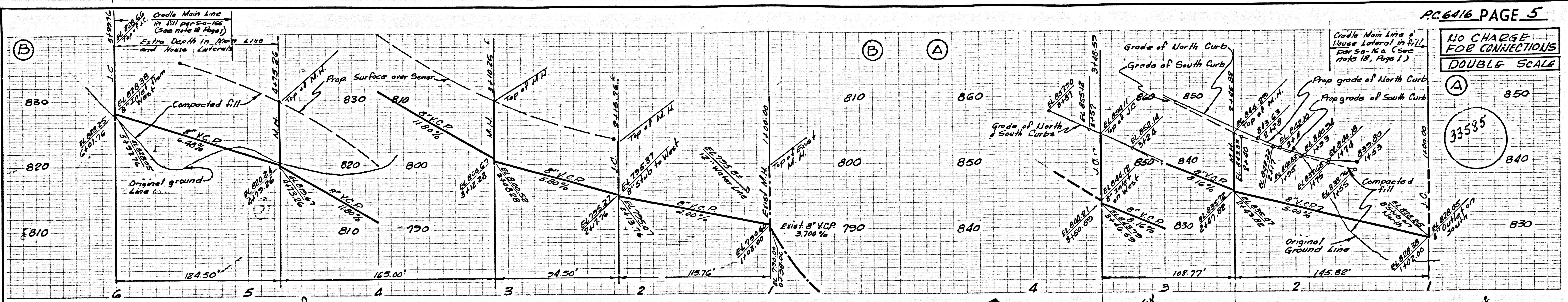
NO CHARGE FOR CONNECTIONS  
 DOUBLE SCALE

33582



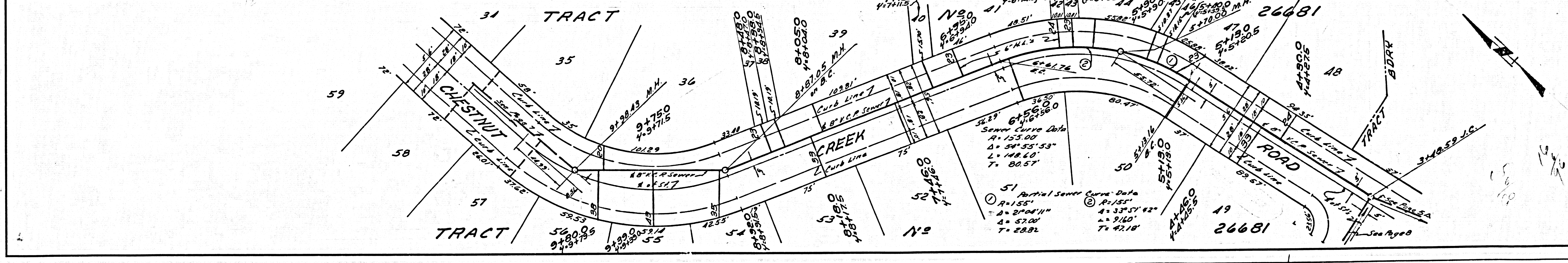
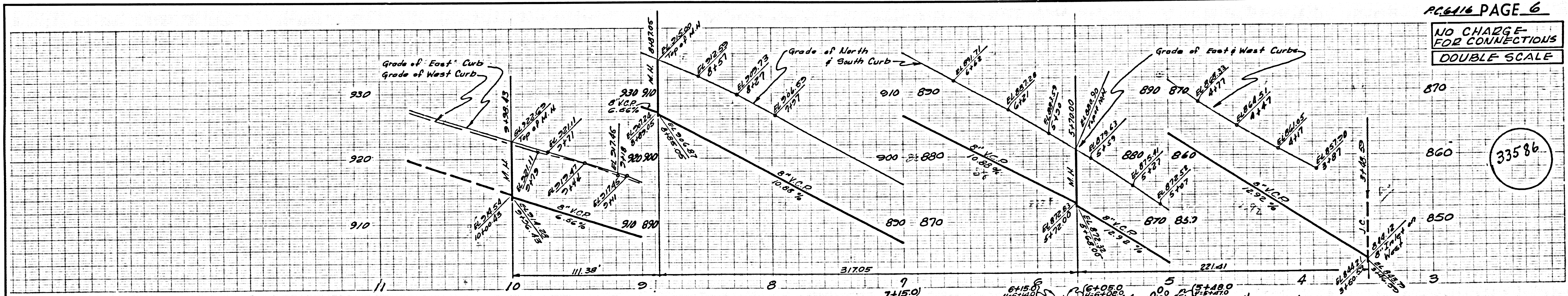
NO CHARGE FOR CONNECTIONS  
DOUBLE SCALE

33585



NO CHARGE FOR CONNECTIONS  
DOUBLE SCALE

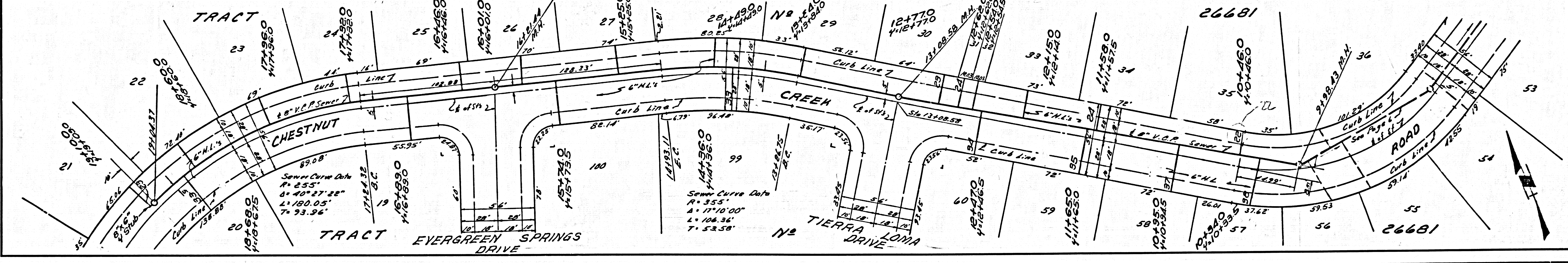
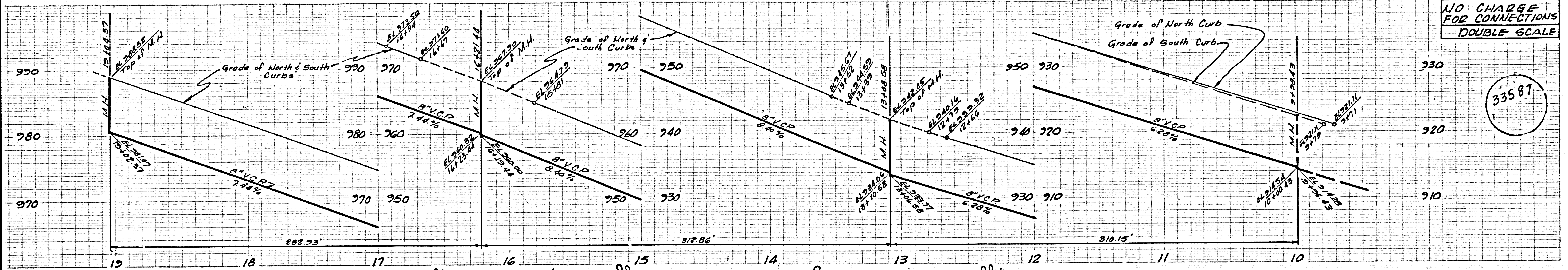
33586



33585  
33586  
TRACT NO. 25987  
TRACT NO. 26681

NO CHARGE FOR CONNECTIONS  
DOUBLE SCALE

33587



NO CHARGE FOR CONNECTIONS  
DOUBLE SCALE

33588

