

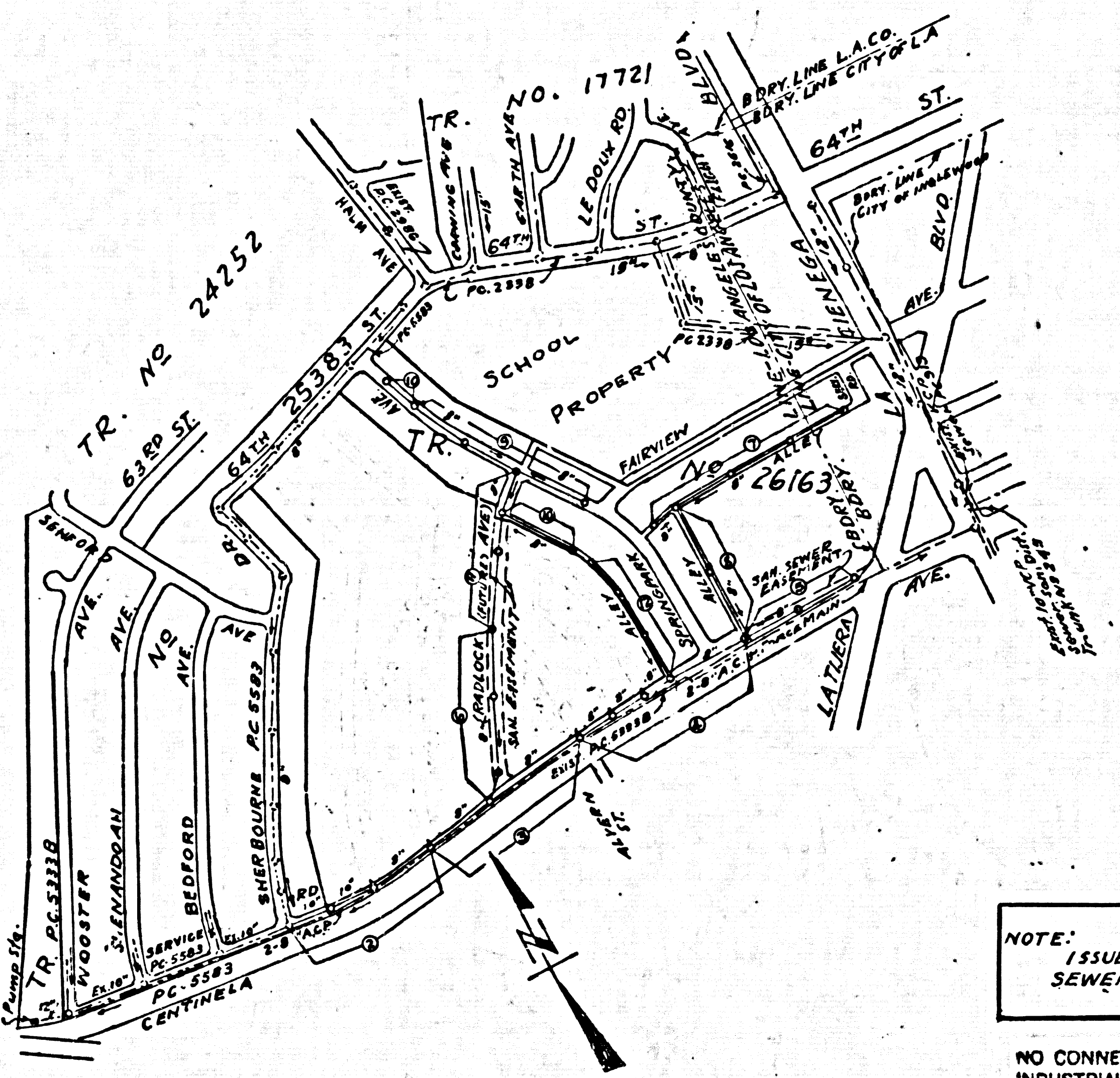
B.M. L.G. 154-360 B.M. A14 Elev. 184.17 B-14
 Washer Set in Lead 2' W. of N.W. Return of
 N.E. Ramp off 11/2 Lawson Ave. to La Genega Blvd.
 L.A. L.G. B. 200-H (El. 183.745) 4d. Dept. Elev.

B.M. L.A.I. Company F.B. 263 Pg. 3 Elev. 135.75
 Chisled Knob E. curb Corning Ave N.E. Return
 64th Street and Corning Ave.

B.M. L.A.I. Company F.B. 263 Pg. 8 Elev. 41.03
 Spk. Set in lead No. T.C. Centinela Ave.
 East P.L. of Dow Chemical Co.

NOT E:
 Old L.A. City Datum - Add 5.575 for Road Department
 Old L.A. City Datum - Add 5.775 for U.S.C.G.S. Sea level
 Datum of 1929

B.M. 29-8 Elev. 125.403 = 1961 Adj.
 (FREEMAN BLVD) NOW LA GENEGA BLVD. AND
 CENTINELA AVE. AT CENTER OF INTERSECTION.
 SET IN WELL PROTECTED BY CAST IRON COVER
 MARKED "CITY OF LOS ANGELES MONUMENT
 ENGINEERING" A 1/4 HEXAGON BAR F.B. 1351-183 =
 L.A. COUNTY ROAD DEPT. NO. SY 5190-1961 Adj.
 Add 5.00 to L.A.I. Datum to County Rd. Dept.



DOUBLE SCALE
 LENNOX BLDG. DIST. NO.7

PROFILE ALIGNMENT AND GRADE OF P.C. 6426
 SANITARY SEWERS PAGE 1
 TO BE CONSTRUCTED IN J.N. 0359.49
 TRACT NO. 26163
 PRIVATE CONTRACT NO. 6426

- NOTES:
1. PROFILE STAKES ON THE PROPERTY LINE OR PROPERTY LINES PRODUCED AT RIGHT ANGLES TO THE SEWER LINE AT THE CENTER LINE OF EACH MANHOLE.
 2. NO REPRESENTATIVE OF THE COUNTY ENGINEER WILL SURVEY OR LAY OUT ANY PORTION OF THE WORK.
 3. THE PRIVATE ENGINEER SHALL FURNISH THE COUNTY ENGINEER WITH GRADE SHEETS AND STATIONING FOR ALL HOUSE LATERALS AND Y BRANCHES AND SHALL PROVIDE STAKES FOR THEM AT THE PROPER LOCATIONS WITH STATIONING PLAINLY MARKED.
 4. ALL HOUSE LATERALS SHALL BE CONSTRUCTED IN A STRAIGHT ALIGNMENT.
 5. ALL RIGHT ANGLES FROM THE MAINLINE SEWER EXCEPT AS SHOWN ON THE PLANS, ANY CHANGE IN ALIGNMENT SHALL BE REQUESTED IN WRITING BY THE PRIVATE ENGINEER.
 6. THE PRIVATE ENGINEER SHALL FURNISH THE HOUSE LATERAL DEPTH AT THE PROPERTY LINE BELOW THE TOP OF CURB ELEVATION FOR EACH HOUSE LATERAL ON THE GRADE SHEETS.
 7. NO REVISIONS SHALL BE MADE IN THESE PLANS WITHOUT THE APPROVAL OF THE COUNTY ENGINEER.
 8. USE STANDARD MANHOLE FRAMES AND COVERS, 3-11 1/2.
 9. USE EXTRA STRENGTH PIPE, ALL PIPE IS STANDARD DEPTH, EXCEPT AS NOTED.
 10. USE MECHANICAL COMPRESSION JOINTS FOR ALL V.C.P. PER SPECS. SECS. 34 & 48-49.
 11. RESURFACE ALL TRENCH WITHIN PAVED AREA TO MEET L.A. COUNTY ROAD DEPT. OR CALIF. STATE HIGHWAY REQUIREMENTS IN ACCORDANCE WITH DETAILS.
 12. IF A POWER POLE IS WITHIN THREE FEET OF THE SEWER, THE SEWER SHALL BE ENCASED, PER S-10-172, CASE III, TWO FEET ON EACH SIDE FROM THE POINT OF INTERFERENCE.
 13. HOUSE LATERALS TO BE CONSTRUCTED WITH INVERTS AT PROPERTY LINE, 6" FEET BELOW CURB GRADE EXCEPT AS NOTED.
 14. MANHOLES SHALL BE BRICK SEWER STRUCTURES 3'-0" DIA. RECAST CONCRETE MANHOLES PER S-10-175 OR S-10-175 MAY BE USED AS ALTERNATE IN LOCATIONS APPROVED BY THE COUNTY ENGINEER.
 15. FOR ALLOWABLE LEAKAGE TEST USE FORMULA NO. 2, SPECS. SEC. 34.
 16. MANHOLE TOPS IN UNIMPROVED RIGHTS-OF-WAY TO BE SIX INCHES ABOVE FINISHED GRADE.
 17. THE CONTRACTOR SHALL NOTIFY THE CONSTRUCTION DIVISION BY TELEPHONE, MADISON 5-4147, EXT. 8021 AT LEAST TWENTY-FOUR HOURS BEFORE STARTING ANY WORK UNDER THIS CONTRACT.
 18. STANDARD SPECIFICATIONS DATED 4/17/25, 1928 APPLY IN THE CONSTRUCTION OF THIS PROJECT.
 19. IF DURING THE COURSE OF CONSTRUCTION IT IS DETERMINED THAT THERE IS LESS THAN FOUR FEET OF COVER OVER THE TOP OF A MAINLINE OR HOUSE LATERAL V.C.P. SEWER WHICH IS NOT INDICATED ON THE PLANS, THE PIPE SHALL BE ENCASED PER SPEC. 172 CASE III, UNLESS OTHERWISE APPROVED BY THE COUNTY ENGINEER.
 20. ALL STATE AND LOCAL TRAFFIC SAFETY ORDERS WILL BE STRICTLY ENFORCED.

W.S. 24
 6 SHEETS; 12 PAGES
 SCALE: VERT. 1"=8' DEC. 1952
 HORIZ. 1"=40'
 PREPARED IN THE OFFICES OF
 BY: *J.C. Klemm*
 C.I. MANHOLE REG. C. E. NO. 1629
 FOR LEGEND SEE PLAN NO. S-A-84

NOTE:
 GRADES TO WHICH THIS IMPROVEMENT IS TO BE CONSTRUCTED ARE SHOWN ON PLANS AND PROFILES. GRADE POINTS FOR TOP OF CURBS, CENTER LINE OF STREETS, OR CENTER LINE OF ALLEYS ARE SHOWN BY CIRCLES ON PROFILES. AT ALL POINTS BETWEEN DESIGNATED POINTS THE GRADE SHALL BE ESTABLISHED SO AS TO CONFORM TO A STRAIGHT LINE DRAWN BETWEEN SAID DESIGNATED POINTS.
 ELEVATIONS ARE IN FEET ABOVE U.S.C. & G.S. SEA LEVEL DATUM OF 1929.
 THIS DRAWING AND THE DATA HEREON ARE HEREBY MADE A PART OF THE SPECIFICATIONS.
 WORK SHALL BE CONSTRUCTED ACCORDING TO SPECIFICATIONS ON FILE IN THE OFFICE OF THE COUNTY ENGINEER AND SHALL BE PROSECUTED ONLY IN THE PRESENCE OF THE COUNTY ENGINEER.
 BEFORE WORK CAN BE STARTED THE CONTRACTOR MUST OBTAIN A PERMIT TO EXCAVATE IN COUNTY STREETS FROM THE L.A. COUNTY ROAD DEPT., DISTRICT OFFICE NO. 2, AND MAY A FEE TO THE COUNTY ENGINEER ROOM, 210 COUNTY ENGINEER BLDG. 400 N. 4th ST. SUFFICIENT TO COVER THE COST OF CONSTRUCTION INSPECTION AND RECORD PLANS.
 APPROVAL OF THIS PLAN BY THE COUNTY OF LOS ANGELES DOES NOT CONSTITUTE A REPRESENTATION AS TO THE ACCURACY OF THE LOCATION OF OR THE EXISTENCE OR NON-EXISTENCE OF ANY UNDERGROUND UTILITY PIPE, OR STRUCTURE WITHIN THE LIMITS OF THIS PROJECT. THIS NOTE APPLIES TO ALL PAGES.
 IF WORK IS TO BE DONE IN A STATE HIGHWAY, A PERMIT MUST BE OBTAINED FROM THE STATE OF CALIFORNIA, DIVISION OF HIGHWAYS, 126 SOUTH SPRING STREET.

COUNTY OF LOS ANGELES, CALIFORNIA
 APPROVED, JOHN A. LAMBIE, COUNTY ENGINEER APPROVED, J.D. PARKHURST, CHIEF ENGINEER
 CO. PLAN, DIST. NO. 9
 BY: *J.C. Klemm* 4337E SANITATION ENGINEER BY: *J.C. Klemm* OFFICE ENGINEER
 CHECKED BY: *St. Jude* 4-4-53 OFFICE OF COUNTY ENGINEER, REG. C. E. NO. 3406
 SUBMITTED BY: *Jack C. Klemm*
 PALOS VERDES-CENTINELA VALLEY REGIONAL ENGINEER

NOTE:
 ISSUE NO HOUSE CONNECTION PERMITS UNTIL SANITARY SEWER R/W AND TRACT NO. 26163 HAVE BEEN RECORDED.

NO CONNECTIONS FOR THE DISPOSAL OF INDUSTRIAL WASTES SHALL BE MADE TO SEWERS SHOWN ON THESE DRAWINGS WITHOUT WRITTEN PERMISSION FROM THE CHIEF ENGINEER AND GENERAL MANAGER OF THE COUNTY SANITATION DISTRICTS.

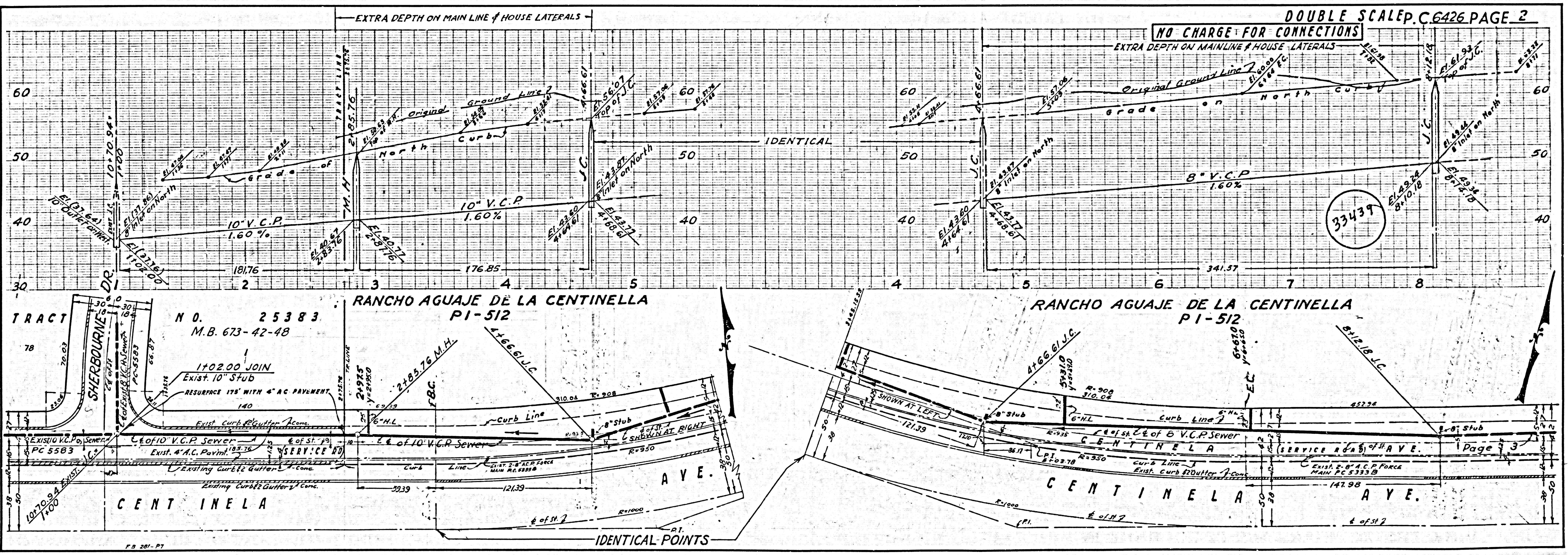
NO CHARGE FOR CONNECTIONS

CITY OF LOS ANGELES
 APPROVED: *Paul R. Paulsen*
 DATE: *April 22 1953*
 CITY ENGINEER

P.C. NO. 6426
 SCALE 1"=60'
 TRACT NO. 26163
 NOTE: NUMBERS IN CIRCLES INDICATE PAGE NUMBER

71

TRACT NO. 51123 B.C. 4252



DOUBLE SCALE P.C. 6426 PAGE 2
 NO CHARGE FOR CONNECTIONS

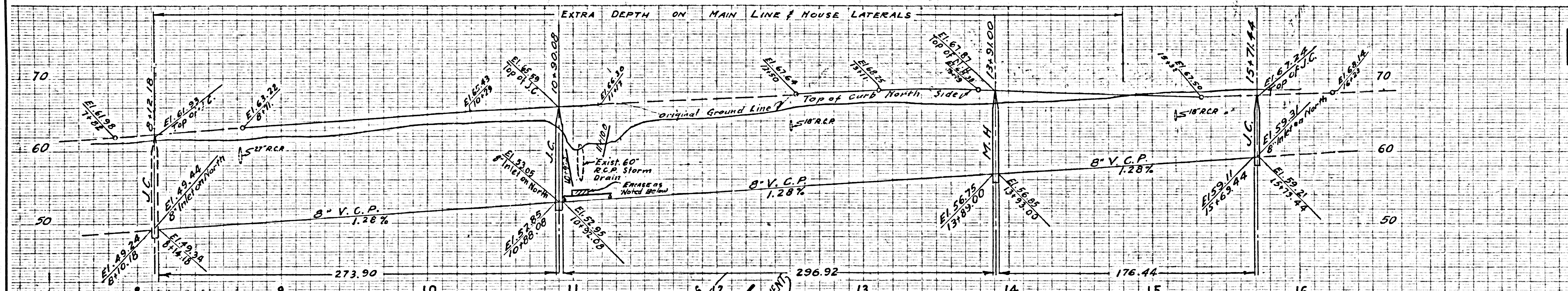
33439

CENTINELA AVE.

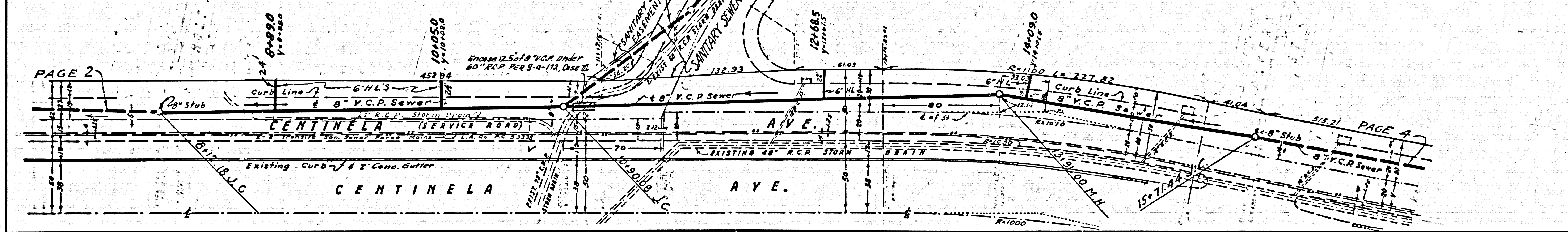
CENTINELA AVE.

Page 3

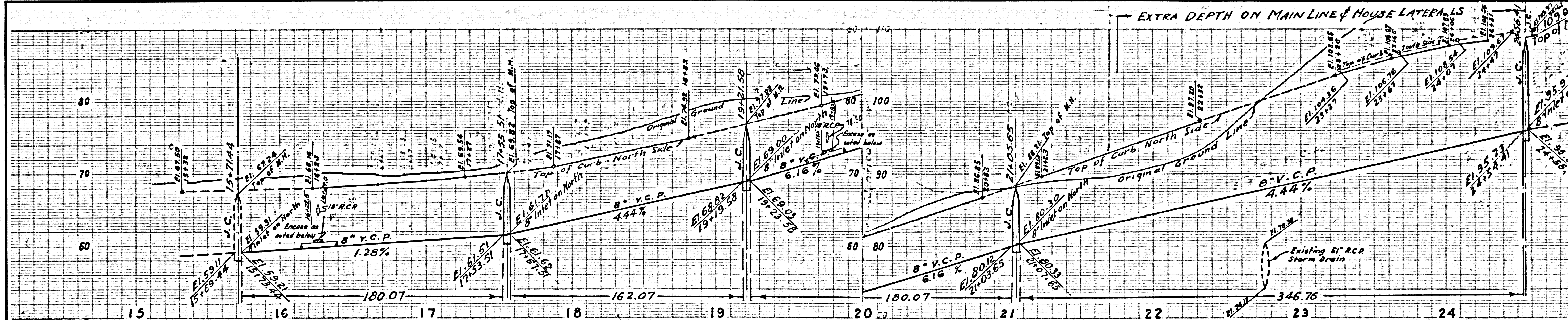
33440



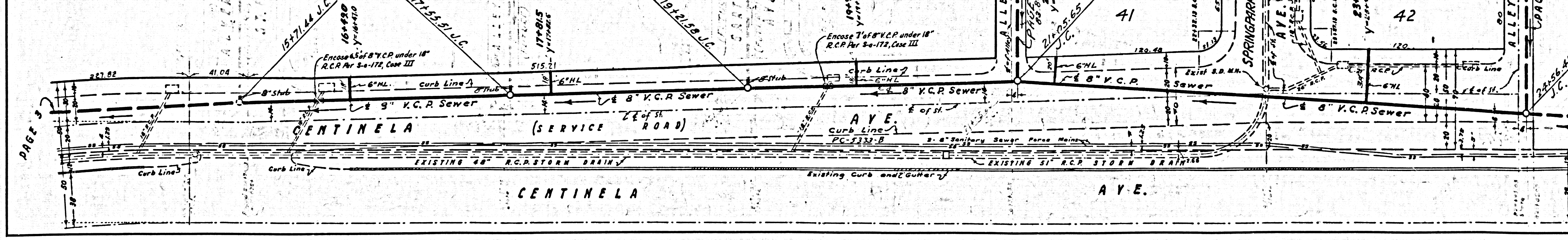
RANCHO AGUAJE DE LA CENTINELLA PI-512



33441



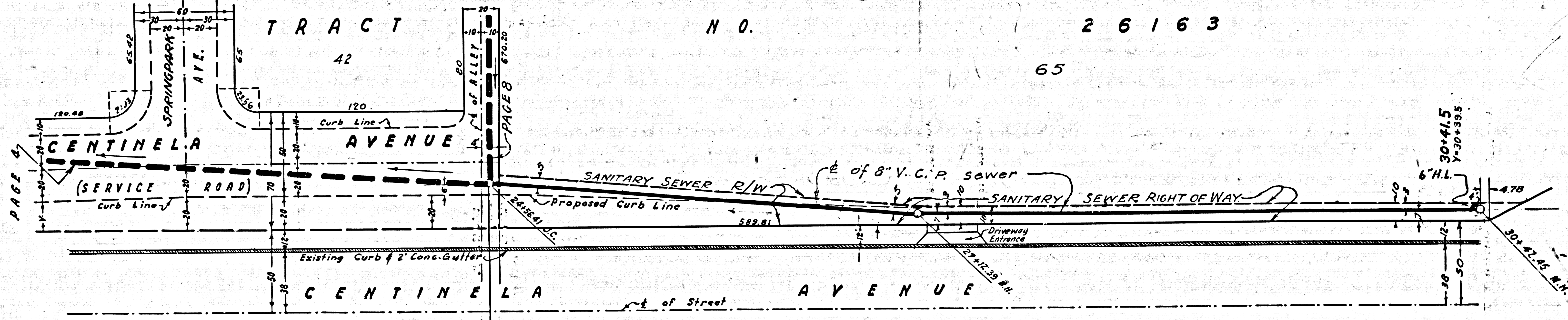
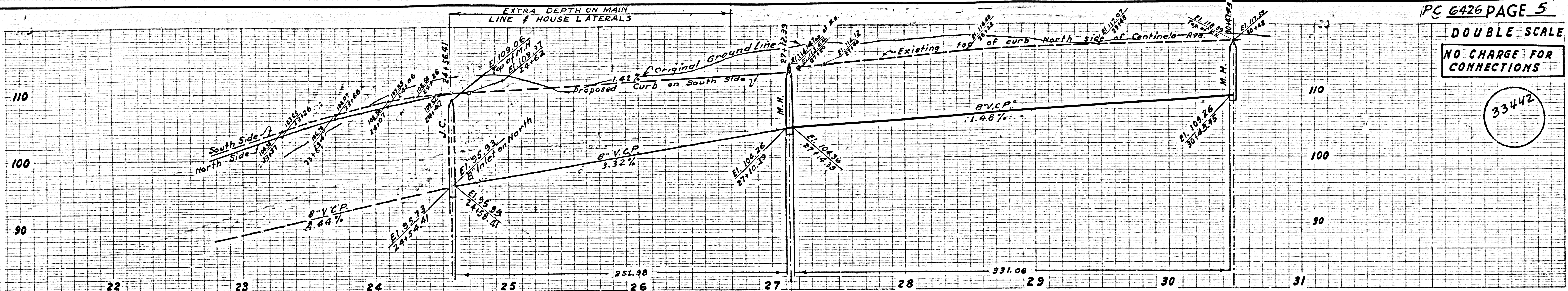
RANCHO AGUAJE DE LA CENTINELLA TRACT NO. 26163



TRACT NO. 26163

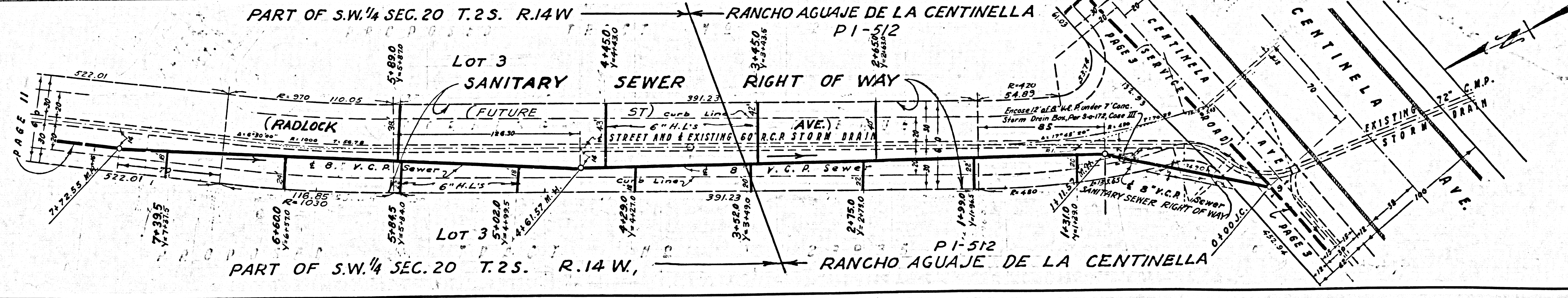
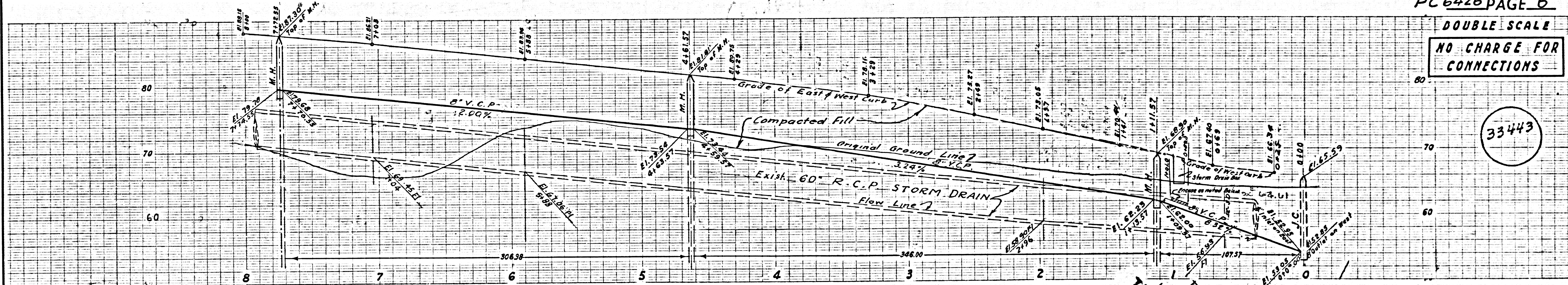
DOUBLE SCALE
NO CHARGE FOR CONNECTIONS

33442



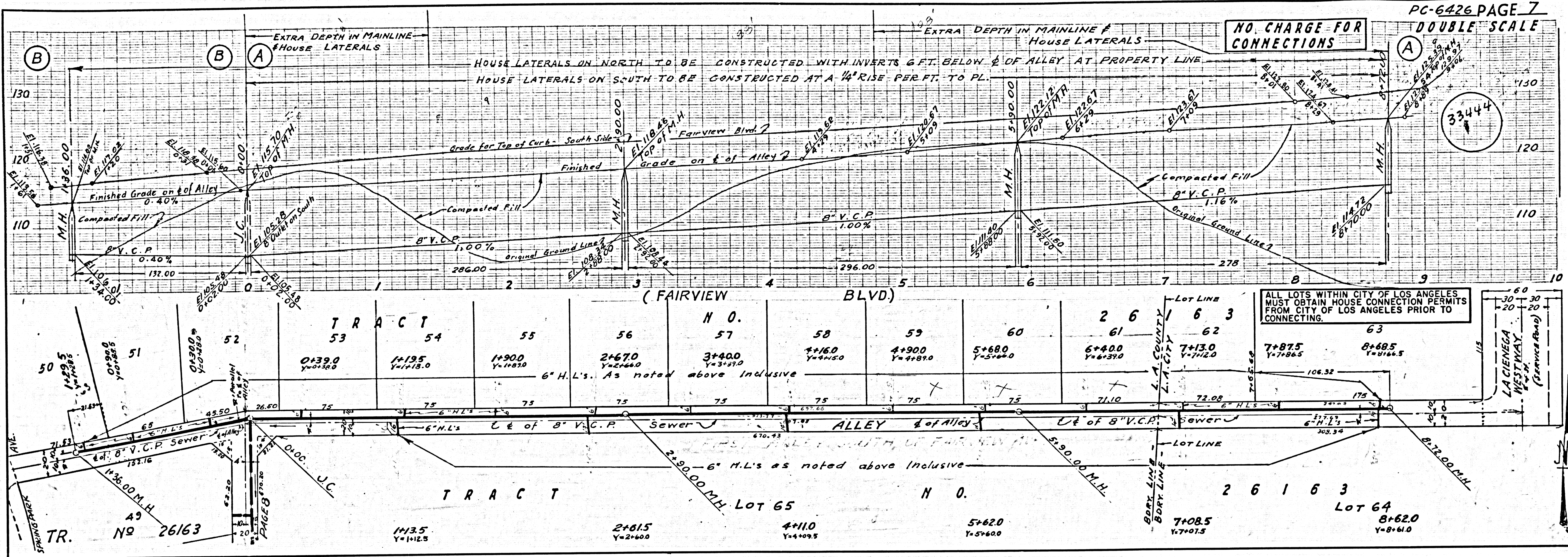
DOUBLE SCALE
NO CHARGE FOR CONNECTIONS

33443



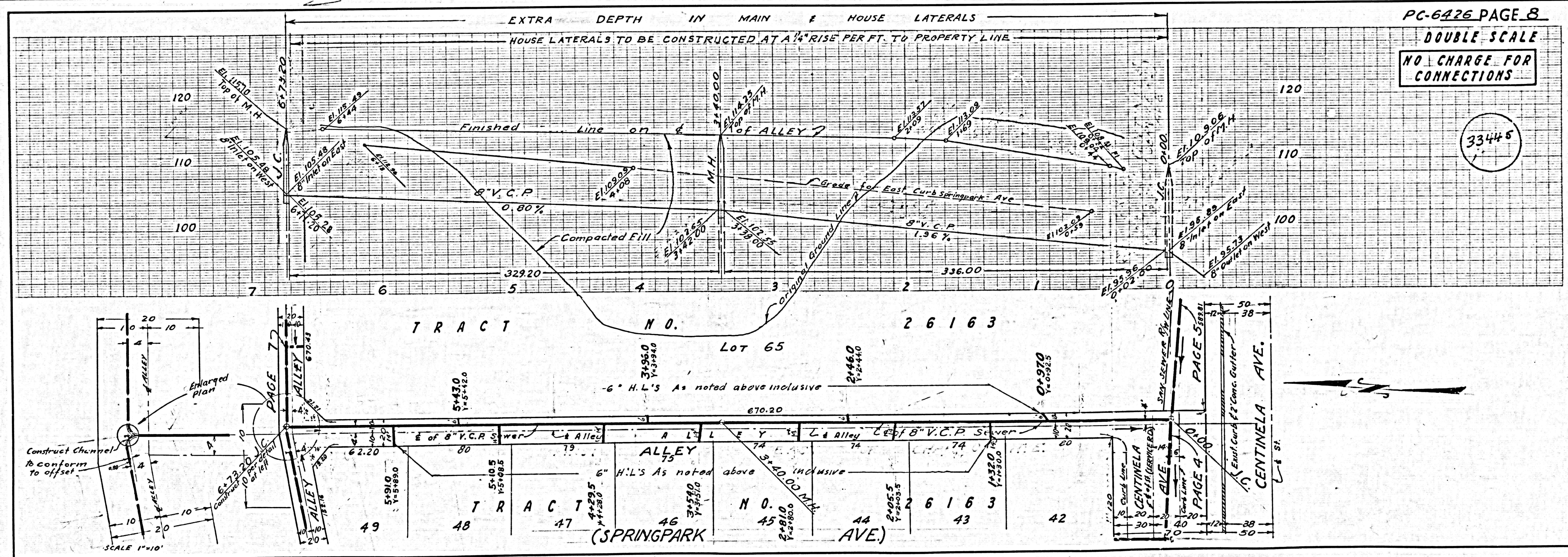
TRACT NO 26163
PC 6426

NO CHARGE FOR CONNECTIONS



ALL LOTS WITHIN CITY OF LOS ANGELES MUST OBTAIN HOUSE CONNECTION PERMITS FROM CITY OF LOS ANGELES PRIOR TO CONNECTING.

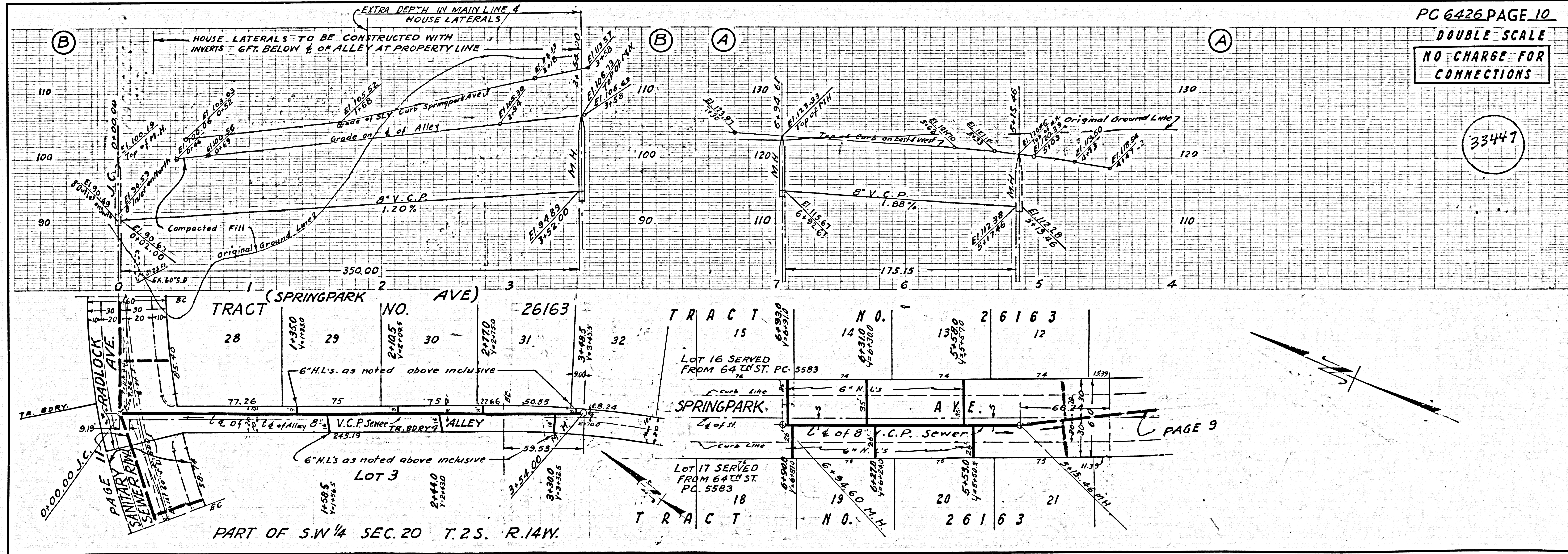
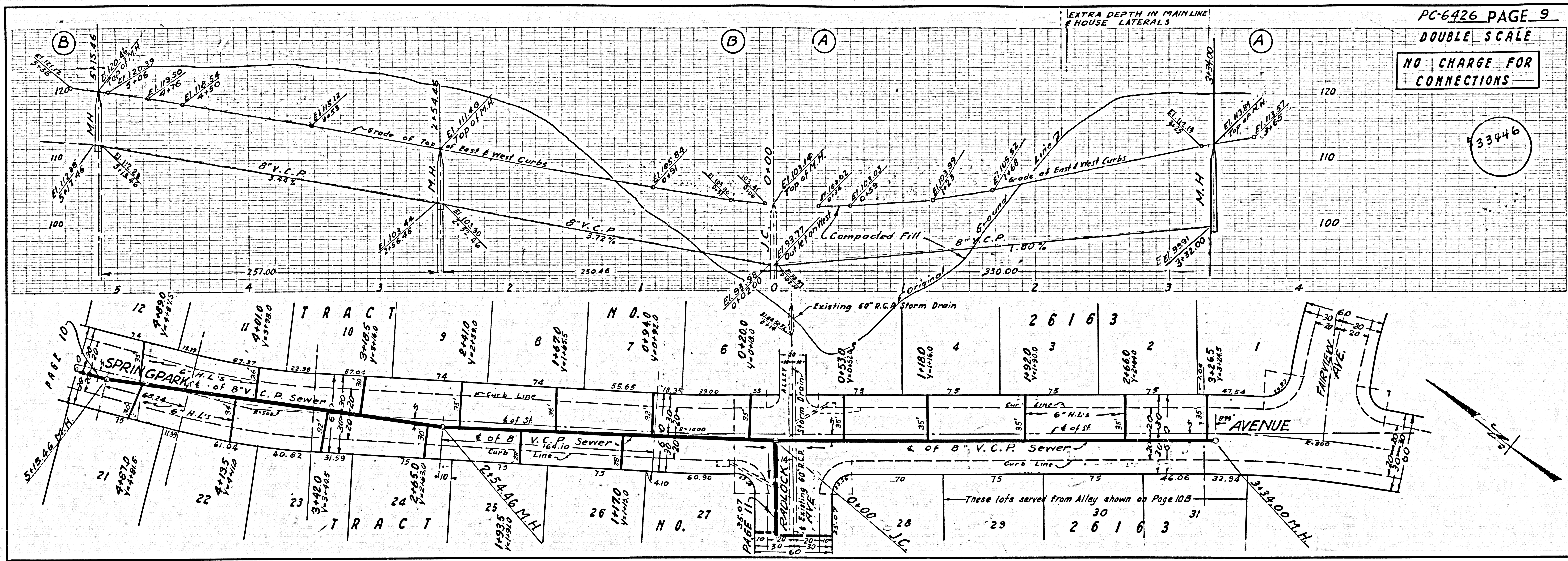
NO CHARGE FOR CONNECTIONS



Enlarged Plan

Construct Channel to conform to offset

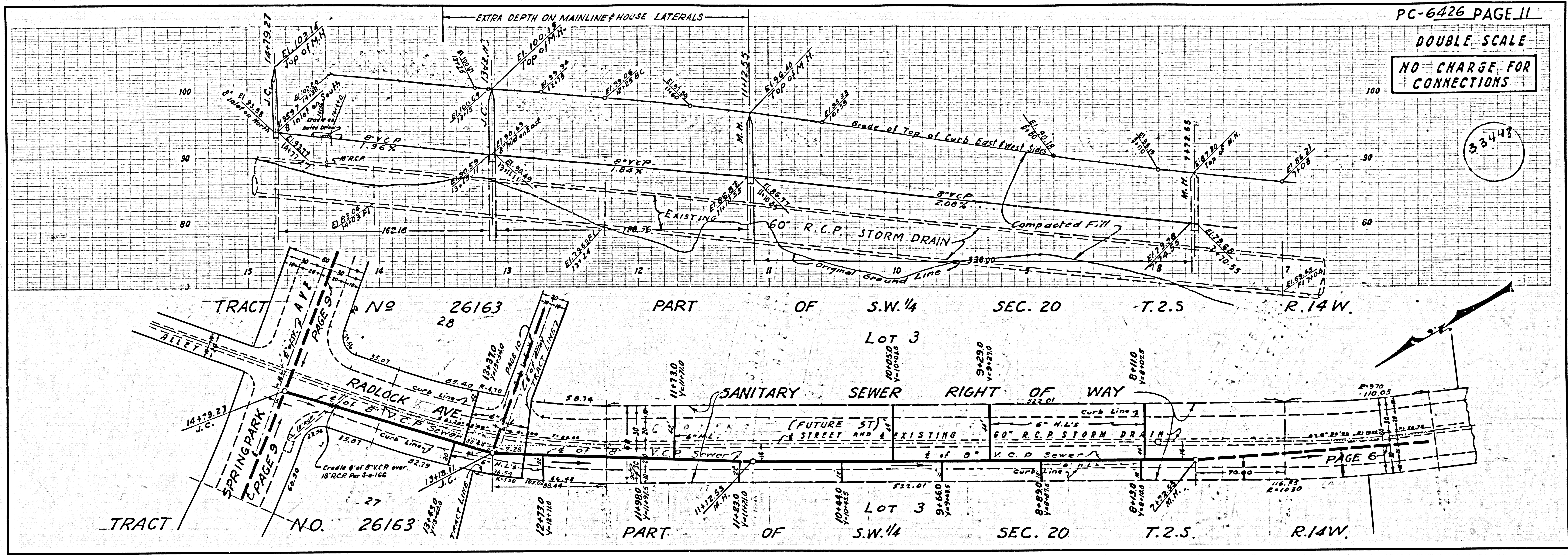
SCALE 1"=10'



DOUBLE SCALE

NO CHARGE FOR CONNECTIONS

33448



DOUBLE SCALE

NO CHARGE FOR CONNECTIONS

33449

