

LOMITA BLDG. DIST. NO. 12

PROFILE ALIGNMENT AND GRADE OF P.C. 6429
SANITARY SEWERS PAGE 1
TO BE CONSTRUCTED IN J.N. 0359.50
264TH STREET
AND R/W WEST OF 264TH STREET

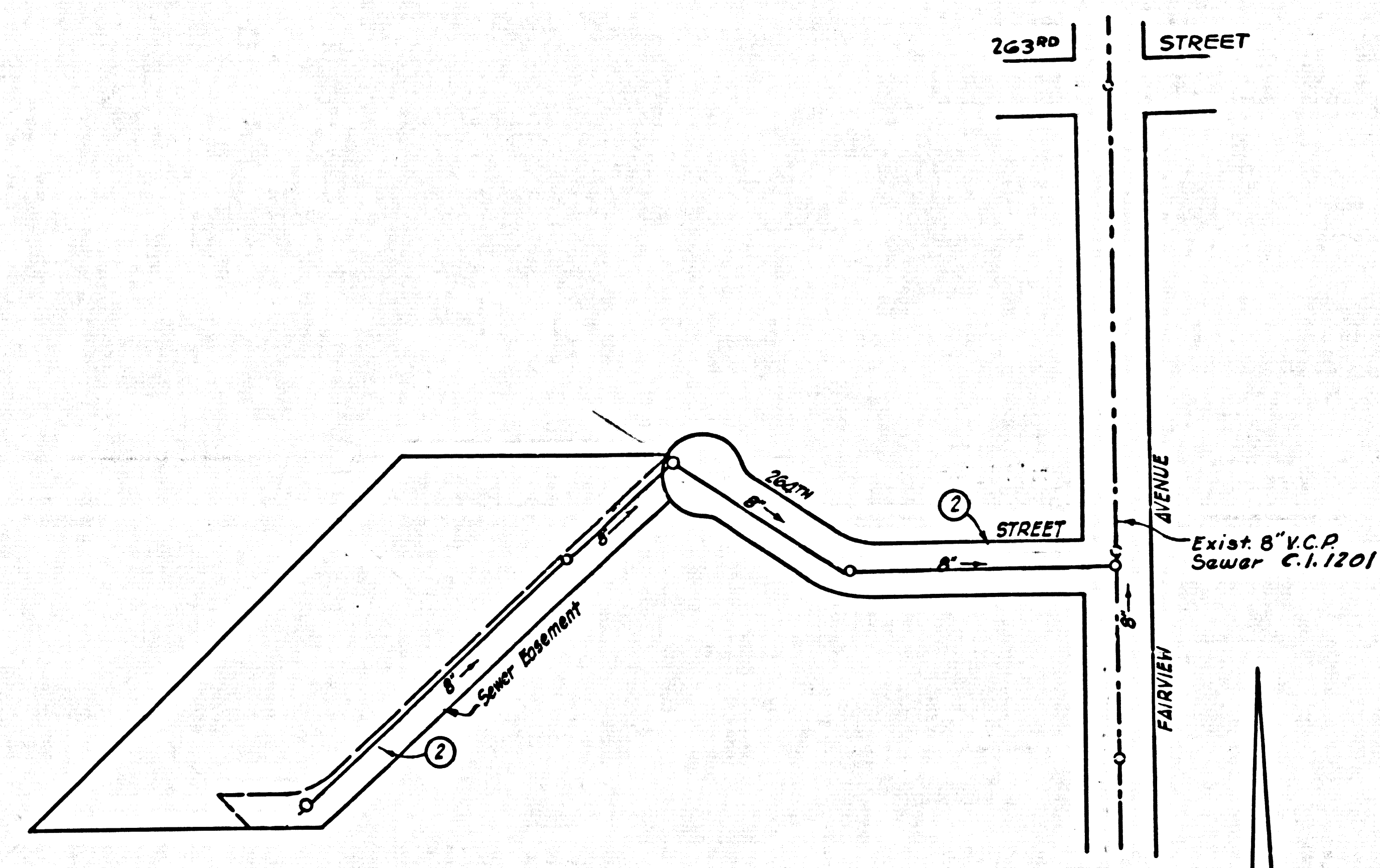
PRIVATE CONTRACT NO. 6429

W.S. 28
1 SHEET 2 PAGES

SCALE: VERT. 1"=4'
HORIZ. 1"=40'
JAN. 1963
PREPARED IN THE OFFICES OF
GARDENA ENGINEERING COMPANY
1601 W. REDONDO BEACH BLVD. GARDENA, CALIF.
By: *Edmund C. Forstner* REG. C. E. NO. 9188
FOR LEGEND SEE PLAN NO. S-A-64

33971

BENCH MARK
B.M. 36-1 (U.S.C. 8-168) (U.S. 2870)
Narbonne Ave. 0.6 mi. So.
Pacific Coast Hwy. 5 NW of P.P.M. 181733 E. (Replaced with 1037153E in line with gray wire and between 3 pipes 3 high painted yellow & stamped "U.S.B.M." U.S.C. # G.S. 0-168, record 1940-P.S. 1957-1, 1953 Adj. El. 204.07)



INDEX MAP
SCALE: 1"=100'
P.C. 6429

COLLECT CHARGES AS INDICATED
L. Carter 8-29-63

- NOTES:
1. PROVIDE STAKES ON THE PROPERTY LINE OR PROPERTY LINES PRODUCED AT RIGHT ANGLES TO THE SEWER LINE AT THE CENTER LINE OF EACH MANHOLE.
 2. NO REPRESENTATIVE OF THE COUNTY ENGINEER WILL SURVEY OR LAY OUT ANY PORTION OF THE WORK.
 3. THE PRIVATE ENGINEER SHALL FURNISH THE COUNTY ENGINEER WITH GRAD SHEETS AND STATIONING FOR ALL HOUSE LATERALS AND Y BRANCHES AND SHALL PROVIDE STAKES FOR THEM AT THEIR PROPER LOCATIONS WITH STATIONING PLAINLY MARKED. ANY CHANGE IN LOCATION SHALL BE REQUESTED IN WRITING BY THE PRIVATE ENGINEER. ALL HOUSE LATERALS SHALL BE CONSTRUCTED IN A STRAIGHT ALIGNMENT AT RIGHT ANGLES FROM THE MAIN LINE SEWER EXCEPT AS SHOWN ON THE PLANS. ANY CHANGE IN ALIGNMENT SHALL BE REQUESTED IN WRITING BY THE PRIVATE ENGINEER.
 4. THE PRIVATE ENGINEER SHALL FURNISH THE HOUSE LATERAL DEPTH AT THE PROPERTY LINE BELOW THE TOP OF CURB ELEVATION FOR EACH HOUSE LATERAL ON THE GRADE SHEET.
 5. NO REVISIONS SHALL BE MADE IN THESE PLANS WITHOUT THE APPROVAL OF THE COUNTY ENGINEER.
 6. USE STANDARD MANHOLE FRAMES AND COVERS, S-117
 7. USE EXTRA STRENGTH PIPE. ALL PIPE IS STANDARD DEPTH, EXCEPT AS NOTED.
 8. USE MECHANICAL COMPRESSION JOINTS FOR ALL V.C.P. JOINTS PER SPEC. 3, SECS. 36, 48, & 49.
 9. RESURFACE ALL TRENCH WITHIN PAVED AREA TO MEET L.A. COUNTY ROAD DEPT. OR CALIF. STATE HIGHWAY REQUIREMENTS IN ACCORDANCE WITH PERMITS.
 10. ENCASE FOUR FEET OF SEWER AT POINTS OF INTERFERENCE WITH POLES, CASE III, S-172, WHERE POLES ARE WITHIN 3 FT. OF SEWER.
 - 11.
 12. MANHOLES SHALL BE BRICK SEWER STRUCTURES S-a-104 PRECAST CONCRETE MANHOLES PER S-a-135 OR S-a-173 MAY BE USED AS AN ALTERNATE IN LOCATIONS APPROVED BY THE COUNTY ENGINEER.
 13. FOR ALLOWABLE LEAKAGE TEST USE FORMULA NO. 2, SPEC. SEC. 64.
 14. MANHOLE TOPS IN UNIMPROVED RIGHTS-OF-WAY TO BE SIX INCHES ABOVE FINISHED GRADE.
 15. THE CONTRACTOR SHALL NOTIFY THE CONSTRUCTION DIVISION BY TELEPHONE, MADISON 9-4747 EXT. 81-551 AT LEAST TWENTY-FOUR HOURS BEFORE STARTING ANY WORK UNDER THIS CONTRACT.
 16. STANDARD SPECIFICATIONS DATED MAY 25, 1962 APPLY IN THE CONSTRUCTION OF THIS PROJECT.
 17. ALL THE LOCATIONS SHOWN FOR EXISTING SUBSTRUCTURES HAVE BEEN TAKEN FROM RECORDS AND THEIR CORRECTNESS AND COMPLETENESS IS IN NO WAY GUARANTEED. IT SHALL BE THE CONTRACTOR'S RESPONSIBILITY ALONE TO DEFINITELY LOCATE ALL UNDERGROUND LINES OF EVERY NATURE WHETHER SHOWN HEREON OR NOT, AND PROTECT THEM FROM DAMAGE. THE CONTRACTOR SHALL BEAR THE TOTAL EXPENSE OF REPAIR TO ANY LINE DAMAGED BY ANY OPERATION IN CONNECTION WITH THE PROSECUTION OF THIS WORK.
 18. # DURING THE COURSE OF CONSTRUCTION IT IS DETERMINED THAT THERE IS LESS THAN FOUR FEET OF COVER OVER THE TOP OF A MAIN LINE OR HOUSE LATERAL V.C.P. SEWER WHICH IS NOT INDICATED ON THE PLANS, THE PIPE SHALL BE ENCASED PER S-a-172, CASE III, UNLESS OTHERWISE APPROVED BY THE COUNTY ENGINEER.
 19. ALL STATE AND LOCAL TRENCH SAFETY ORDERS WILL BE RIGIDLY ENFORCED.

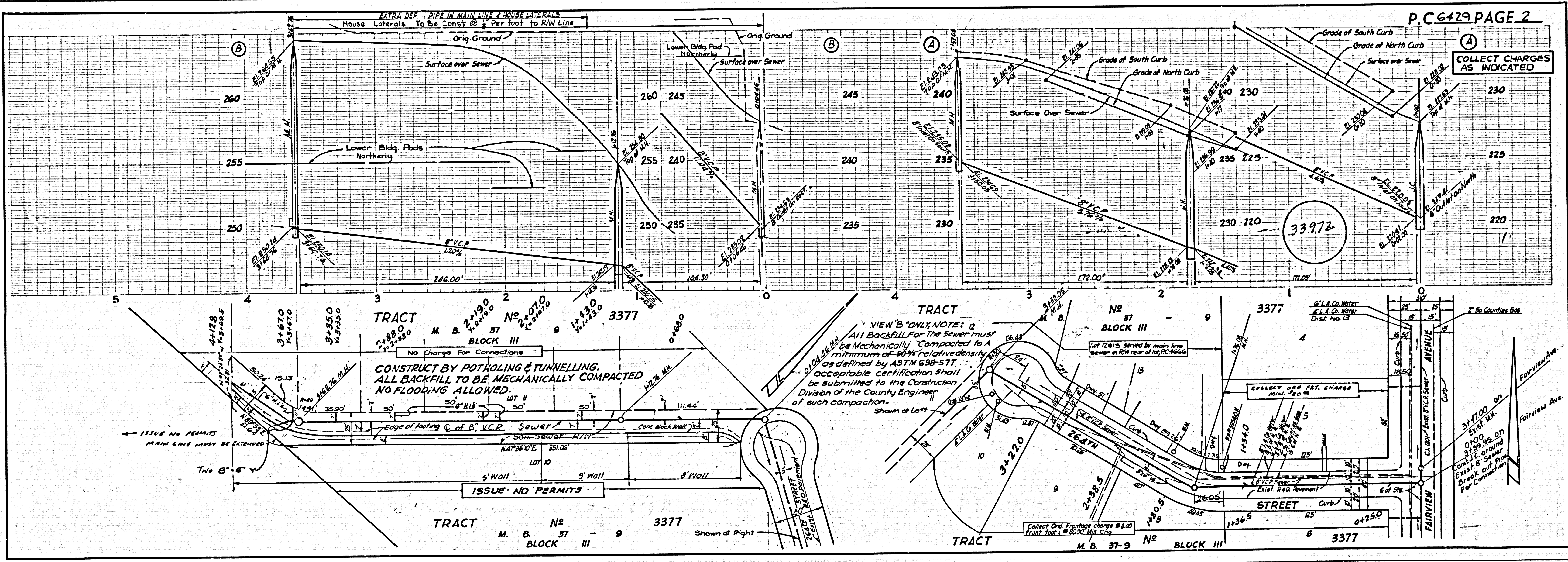
NO CONNECTIONS FOR THE DISPOSAL OF INDUSTRIAL WASTES SHALL BE MADE TO SEWERS SHOWN ON THESE DRAWINGS WITHOUT WRITTEN PERMISSION FROM THE CHIEF ENGINEER AND GENERAL MANAGER OF THE COUNTY SANITATION DISTRICTS.

| DATE | REVISION DESCRIPTION |
|---------------------------|--|
| Sept 11, 1963 | Realigned Sewers Added Retaining Wall to Plan Added Compaction Notes |
| <i>Edmund C. Forstner</i> | <i>Ralph Schaefer 9/14/63</i> |
| EDMUND C. FORSTNER | APPROVED |

NOTE:
GRADES TO WHICH THIS IMPROVEMENT IS TO BE CONSTRUCTED ARE SHOWN ON PLANS AND PROFILES. GRADE POINTS FOR TOP OF CURBS, CENTER LINE OF STREETS, OR CENTER LINE OF ALLEYS ARE SHOWN BY CIRCLES ON PROFILES AT ALL POINTS BETWEEN DESIGNATED POINTS THE GRADE SHALL BE ESTABLISHED SO AS TO CONFORM TO A STRAIGHT LINE DRAWN BETWEEN SAID DESIGNATED POINTS.
ELEVATIONS ARE IN FEET ABOVE U.S.C. & G.S. SEA LEVEL DATUM OF 1929.
THIS DRAWING AND THE DATA HEREON ARE HEREBY MADE A PART OF THE SPECIFICATIONS.
WORK SHALL BE CONSTRUCTED ACCORDING TO SPECIFICATIONS ON FILE IN THE OFFICE OF THE COUNTY ENGINEER AND SHALL BE PROSECUTED ONLY IN THE OFFICE OF THE COUNTY ENGINEER.
BEFORE WORK CAN BE STARTED, THE CONTRACTOR MUST OBTAIN A PERMIT TO EXCAVATE IN COUNTY STREETS FROM THE L.A. COUNTY ROAD DEPT., DISTRICT OFFICE NO. 3, AND PAY A FEE TO THE COUNTY ENGINEER, ROOM 300 COUNTY ENGINEERS BLDG., 108 W. 2ND ST., SUFFICIENT TO COVER THE COST OF CONSTRUCTION INSPECTION AND RECORD PLANS.
APPROVAL OF THIS PLAN BY THE COUNTY OF LOS ANGELES DOES NOT CONSTITUTE A REPRESENTATION AS TO THE ACCURACY OF THE LOCATION OF OR THE EXISTENCE OR NON-EXISTENCE OF ANY UNDERGROUND UTILITY PIPE, OR STRUCTURE WITHIN THE LIMITS OF THIS PROJECT. THIS NOTE APPLIES TO ALL PAGES.
IF WORK IS TO BE DONE IN A STATE HIGHWAY, A PERMIT MUST BE OBTAINED FROM THE STATE OF CALIFORNIA, DIVISION OF HIGHWAYS, 120 SOUTH SPRING STREET.

COUNTY OF LOS ANGELES, CALIFORNIA
APPROVED, JOHN A. LAMBE, COUNTY ENGINEER APPROVED, J.D. PARKHURST, CHIEF ENGINEER
CO SAN. DIST. NO. 5
BY: *Edmund C. Forstner* ASST. SANITATION ENGINEER BY: *J.D. Parkhurst* OFFICE ENGINEER
CHECKED BY: *Henry Lee* 8-30-63
OFFICE OF COUNTY ENGINEER, Rm. C. B. NO. 10443

SUBMITTED *Jack Conners*
PALOS VERDES - CENTINELA VALLEY REGIONAL ENGINEER



P.C. 6429 PAGE 2

COLLECT CHARGES AS INDICATED