

B.M. 3Y-235 ELEV. 14.889  
 LAT. S.E. STRADDLER AT INT.  
 OF 213TH ST. & AVALON BLVD.  
 GARDENA QUAD. 1960 ADZ.

LOMITA BLDG. DIST. NO. 12

PROFILE ALIGNMENT AND GRADE OF P.C. 6435  
 SANITARY SEWERS PAGE 1

TO BE CONSTRUCTED IN  
 TRACT No 26399

PRIVATE CONTRACT NO. 6435

W.S. 28

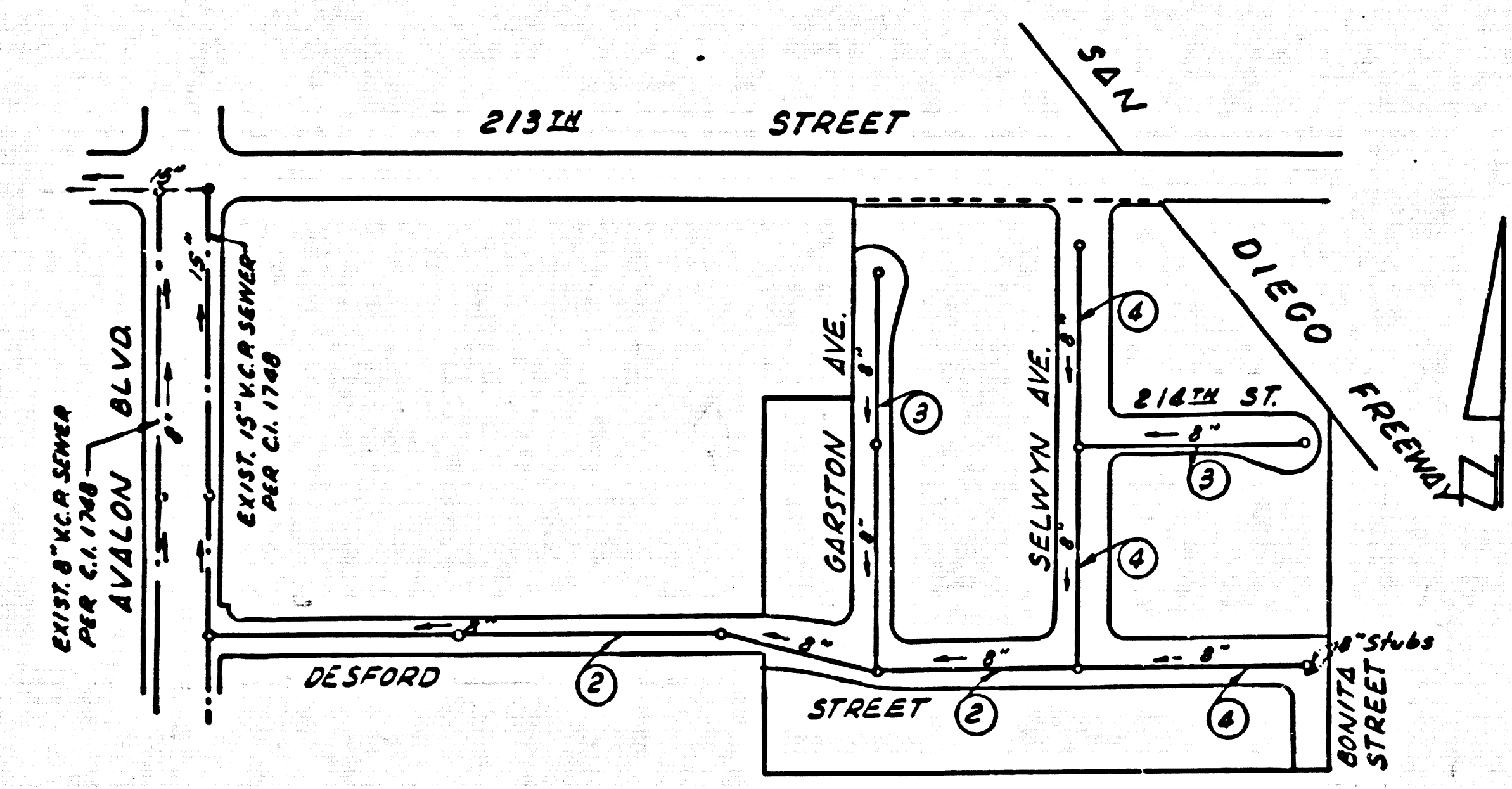
2 SHEETS; 4 PAGES  
 SCALE: VERT. 1"=4'  
 HORIZ. 1"=40' FEB, 1963

PREPARED IN THE OFFICES OF  
 LANCO ENGINEERING

By: *Clark M. Leonard*  
 REG. C. E. NO. 13167

FOR LEGEND SEE PLAN NO. S-A-64

33601



INDEX MAP  
 TRACT No 26399  
 SCALE: 1"=200'  
 P.C. 6435  
 Note: Numbers in circles indicate page number

- NOTES:
1. PROVIDE STAKES ON THE PROPERTY LINE OR PROPERTY LINES PRODUCED AT RIGHT ANGLES TO THE SEWER LINE AT THE CENTER LINE OF EACH MANHOLE.
  2. NO REPRESENTATIVE OF THE COUNTY ENGINEER WILL SURVEY OR LAY OUT ANY PORTION OF THE WORK.
  3. THE PRIVATE ENGINEER SHALL FURNISH THE COUNTY ENGINEER WITH GRADE SHEETS AND STATIONING FOR ALL HOUSE LATERALS AND Y BRANCHES AND SHALL PROVIDE STAKES FOR THEM AT THEIR PROPER LOCATIONS WITH STATIONING PLAINLY MARKED. ALL HOUSE LATERALS SHALL BE CONSTRUCTED IN STRAIGHT ALIGNMENT AT RIGHT ANGLES FROM THE MAIN LINE SEWER EXCEPT AS SHOWN ON THE PLANS. HOUSE LATERALS FROM CHIMNEYS SHALL NOT HAVE AN ANGLE OF LESS THAN 45° WITH THE MAIN LINE SEWER. ANY CHANGE IN ALIGNMENT SHALL BE REQUESTED IN WRITING BY THE PRIVATE ENGINEER. THE PRIVATE ENGINEER SHALL FURNISH THE HOUSE LATERAL DEPTH AT THE PROPERTY LINE BELOW THE TOP OF CURB ELEVATION FOR EACH HOUSE LATERAL ON THE GRADE SHEET.
  4. NO REVISIONS SHALL BE MADE IN THESE PLANS WITHOUT THE APPROVAL OF THE COUNTY ENGINEER.
  5. USE STANDARD MANHOLE FRAMES AND COVERS, S-111.
  6. USE EXTRA STRENGTH PIPE, ALL PIPE IS STAND DEPTH EXCEPT AS NOTED.
  7. USE MECHANICAL COMPRESSION JOINTS FOR ALL T.C.P. PER SPECS. SECT. 14, 48 & 49.
  8. RESURFACE ALL TRENCH WITHIN PAVED AREA TO MEET L.A. COUNTY ROAD DEPT. OR CALIF. STATE HIGHWAY REQUIREMENTS IN ACCORDANCE WITH PERMITS.
  9. IF A POWER POLE IS WITHIN THREE FEET OF THE SEWER, THE SEWER SHALL BE ENCASED, PER S-6-172, CASE II, TWO FEET ON EACH SIDE FROM THE POINT OF INTERFERENCE.
  10. HOUSE LATERALS TO BE CONSTRUCTED WITH INVERTS AT PROPERTY LINE 6 FEET BELOW CURB GRADE.
  11. MANHOLES SHALL BE BRICK SEWER STRUCTURES PER S-6-184. PRECAST CONCRETE MANHOLES PER S-6-185 OR S-6-178, MAY BE USED AS AN ALTERNATE IN LOCATIONS APPROVED BY THE COUNTY ENGINEER.
  12. FOR ALLOWABLE LEAKAGE TEST USE FORMULA NO. 1 PER SPECS. SEC. 14.
  13. MANHOLE TOPS IN UNIMPROVED HIGHWAYS TO BE SIX INCHES ABOVE FINISHED GRADE.
  14. THE CONTRACTOR SHALL NOTIFY THE CONSTRUCTION DIVISION BY TELEPHONE, MADISON 5-6141, EXT. 8151, AT LEAST TWENTY-FOUR HOURS BEFORE STARTING ANY WORK UNDER THIS CONTRACT.
  15. SPECIFICATIONS DATED MAY 25, 1962, APPLY IN THE CONSTRUCTION OF THIS PROJECT.
  17. ALL STATE AND LOCAL TRENCH SAFETY ORDERS WILL BE RIGIDLY ENFORCED.

BEFORE BREAKING INTO ANY EXISTING STRUCTURE AND BEFORE FINAL ACCEPTANCE OF THIS WORK, COUNTY SANITATION DISTRICT (DU 4-12811) SHALL BE NOTIFIED IN ORDER THAT REQUIRED INSPECTION CAN BE MADE.

COLLECT CHARGES AS INDICATED

NOTE:  
 GRADES TO WHICH THIS IMPROVEMENT IS TO BE CONSTRUCTED ARE SHOWN ON PLANS AND PROFILES. GRADE POINTS FOR TOP OF CURB, CENTER LINE OF STREETS, OR CENTER LINE OF ALLEYS ARE SHOWN BY CIRCLES ON PROFILES. AT ALL POINTS BETWEEN DESIGNATED POINTS THE GRADE SHALL BE ESTABLISHED SO AS TO CONFORM TO A STRAIGHT LINE DRAWN BETWEEN SAID DESIGNATED POINTS.  
 ELEVATIONS ARE IN FEET ABOVE U.S.C. & G.S. SEA LEVEL DATUM OF 1929.  
 THIS DRAWING AND THE DATA HEREON ARE HEREBY MADE A PART OF THE SPECIFICATIONS.  
 WORK SHALL BE CONSTRUCTED ACCORDING TO SPECIFICATIONS ON FILE IN THE OFFICE OF THE COUNTY ENGINEER AND SHALL BE PROSECUTED IN THE PRESENCE OF THE COUNTY ENGINEER.  
 BEFORE WORK CAN BE STARTED THE CONTRACTOR MUST OBTAIN A PERMIT TO DIGGERS IN COUNTY STREETS FROM THE L.A. COUNTY ROAD DEPT., DISTRICT OFFICE NO. 5, AND PAY A FEE TO THE COUNTY ENGINEER, ROOM 310, COUNTY ENGINEERING BUILDING, 108 N. SECOND ST. PALMS SPRINGS, CALIF. REGIONAL OFFICE, PALMS SPRINGS, CALIF. 92535.  
 APPROVAL OF THIS PLAN BY THE COUNTY OF LOS ANGELES DOES NOT CONSTITUTE A REPRESENTATION AS TO THE ACCURACY OF THE LOCATION OF OR THE EXISTENCE OR NON-EXISTENCE OF ANY UNDERGROUND UTILITY PIPE, OR STRUCTURE WITHIN THE LIMITS OF THIS PROJECT. THIS NOTE APPLIES TO ALL PAGES.  
 IF WORK IS TO BE DONE IN A STATE HIGHWAY, A PERMIT MUST BE OBTAINED FROM THE STATE OF CALIFORNIA, DIVISION OF HIGHWAYS, 120 SOUTH SPRING STREET.

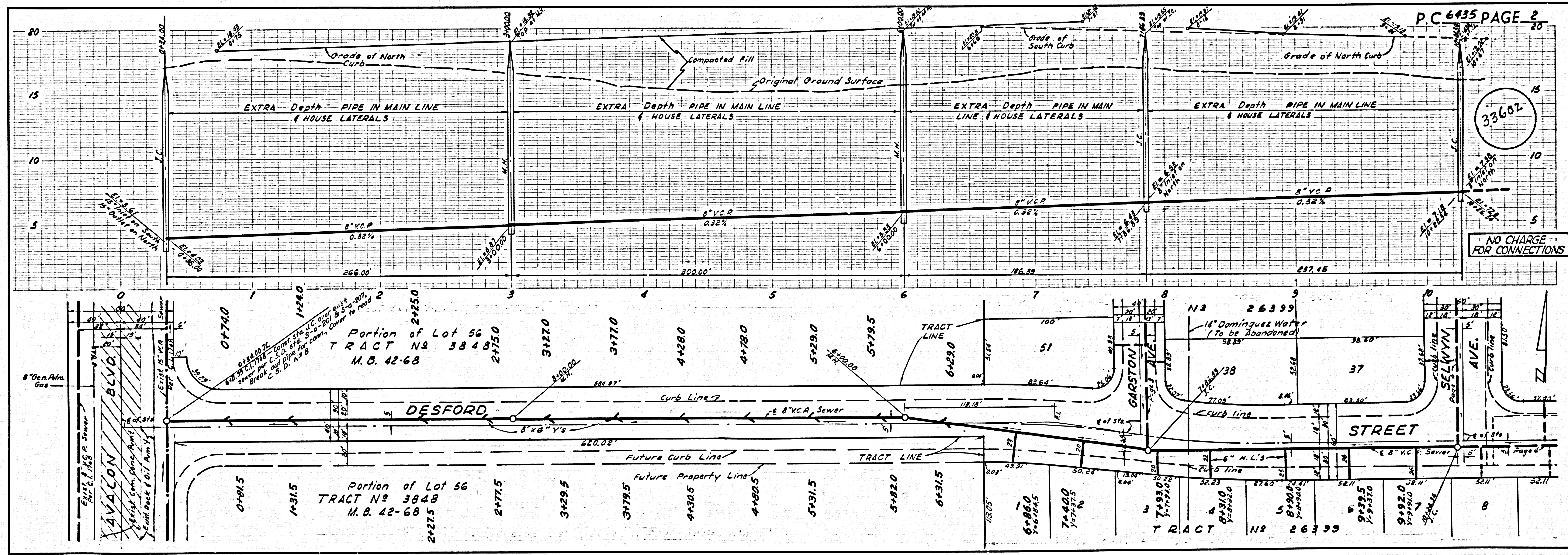
COUNTY OF LOS ANGELES, CALIFORNIA

JOHN A. LAMBIE, COUNTY ENGINEER I. D. PARKHURST, I. CHIEF ENGINEER  
 CO. SAN. DIST. NO. 2

APPROVED BY: *R. E. Ke...* ASSISTANT SANITATION ENGINEER APPROVED BY: *H. ...* OFFICE ENGINEER

CHECKED BY: *S. K. ...* REG. C. E. NO. 2425

SUBMITTED BY: *J. C. Lansing* PALMS SPRINGS-CENTINELA VALLEY REGIONAL ENGINEER I. N. 0359.52



P.C. 6435 PAGE 2

33602

NO CHARGE FOR CONNECTIONS

