

B.M. 562054 ELEV. 660.235
 U.S.C. #65 Brass cap monument
 flush with ground 30' West of E. of
 Brea Canyon Rd. & 0.40 M. S'ly. of Brea
 Canyon Cut-off Rd. Marked N347-1949
 after been QUAD. 19 55

SAN DIMAS BLDG. DIST. NO. 10

PROFILE ALIGNMENT AND GRADE OF
 SANITARY SEWERS PAGE 1
 TO BE CONSTRUCTED IN

TRACT No 27577
 PRIVATE CONTRACT NO. 6441

W.S. 39
 3 SHEETS, 5 PAGES
 SCALE: VERT. 1" = 4' HORIZ. 1" = 40'
 APRIL 11, 1963
 PREPARED IN THE OFFICES OF
 JOHN M. TOURS
 REG. C. E. NO. 10283

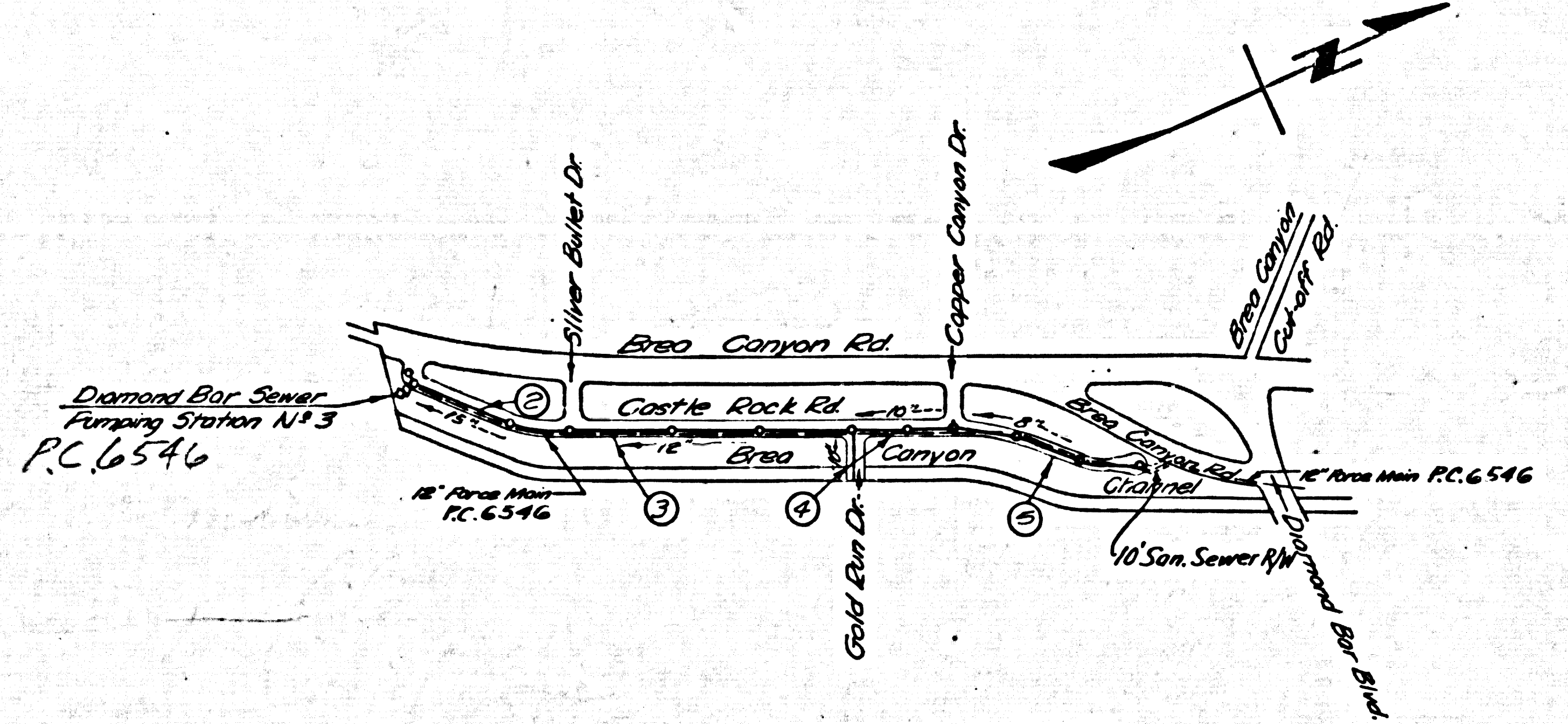
34349

FOR LEGEND SEE PLAN NO. S-64

NOTE:
 GRADES TO WHICH THIS IMPROVEMENT IS TO BE CONSTRUCTED ARE SHOWN ON PLANS AND PROFILES. GRADE POINTS FOR TOP OF CURBS, CENTER LINE OF STREETS, OR CENTER LINE OF ALLEYS ARE SHOWN BY CIRCLES ON PROFILES. AT ALL POINTS BETWEEN DESIGNATED POINTS THE GRADE SHALL BE ESTABLISHED SO AS TO CONFORM TO A STRAIGHT LINE DRAWN BETWEEN SAID DESIGNATED POINTS. ELEVATIONS ARE IN FEET ABOVE U.S.C. & G.S. SEA LEVEL DATUM OF 1929. THIS DRAWING AND THE DATA HEREON ARE HEREBY MADE A PART OF THE SPECIFICATIONS. WORK SHALL BE CONSTRUCTED ACCORDING TO STANDARD SPECIFICATIONS DATED 10/25/58, ON FILE IN THE OFFICE OF THE COUNTY ENGINEER AND SHALL BE PROSECUTED ONLY IN THE PRESENCE OF THE COUNTY ENGINEER. BEFORE WORK CAN BE STARTED, THE CONTRACTOR MUST OBTAIN A PERMIT TO EXCAVATE IN COUNTY STREETS FROM THE L.A. COUNTY ROAD DEPT., DISTRICT OFFICE NO. 10, AND PAY A FEE TO THE COUNTY ENGINEER, ROOM 300, COUNTY ENGINEERING BUILDING, 108 WEST SECOND STREET OR REGIONAL OFFICE, SUFFICIENT TO COVER THE COST OF CONSTRUCTION INSPECTION AND RECORD PLANS. APPROVAL OF THIS PLAN BY THE COUNTY OF LOS ANGELES DOES NOT CONSTITUTE A REPRESENTATION AS TO THE ACCURACY OF THE LOCATION OF OR THE EXISTENCE OR NON-EXISTENCE OF ANY UNDERGROUND UTILITY PIPE, OR STRUCTURE WITHIN THE LIMITS OF THIS PROJECT. THIS NOTE APPLIES TO ALL PAGES. IF WORK IS TO BE DONE IN A STATE HIGHWAY, A PERMIT MUST BE OBTAINED FROM THE STATE OF CALIFORNIA, DIVISION OF HIGHWAYS, 120 SOUTH SPRING STREET, LOS ANGELES, CALIFORNIA.

COUNTY OF LOS ANGELES, CALIFORNIA
 JOHN A. LAMBIE, COUNTY ENGINEER J. D. PARKHURST, CHIEF ENGINEER
 APPROVED BY: [Signature] ASSISTANT SANITATION ENGINEER APPROVED BY: [Signature] OFFICE ENGINEER
 SUBMITTED BY: [Signature] REG. E. NO. 11636
 CHECKED BY: [Signature] REG. C. E. NO. 13345

J.N. 035957



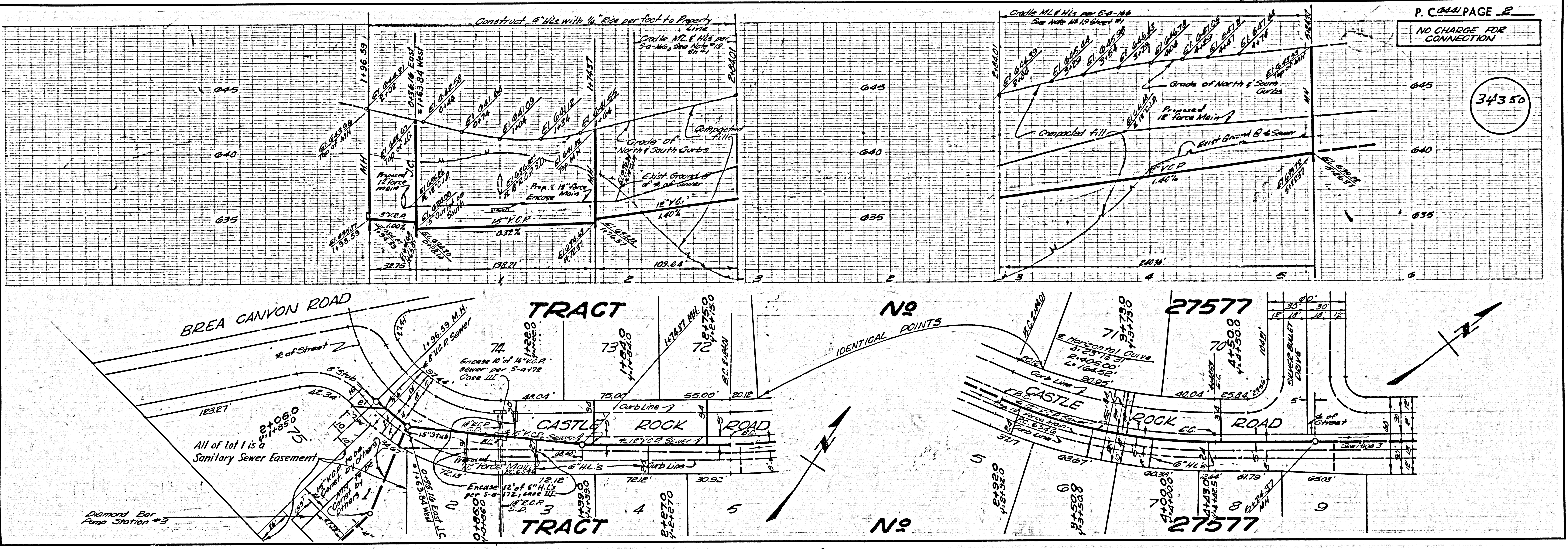
INDEX MAP
 SCALE: 1" = 600'
 TRACT No 27577
 P.C. 6441

REVISION
 Change Sewer Alignment
 on Gold Run Drive, Page 4B
 10 ft to the South
 APPROVED: [Signature] REG. E. NO. 11636
 OFFICE OF COUNTY ENGINEER

NO CONNECTIONS FOR THE DISPOSAL OF INDUSTRIAL WASTES SHALL BE MADE TO SEWERS SHOWN ON THESE DRAWINGS WITHOUT WRITTEN PERMISSION FROM THE CHIEF ENGINEER AND GENERAL MANAGER OF THE COUNTY SANITATION DISTRICTS.

NO CHARGE FOR CONNECTION
 AS IN CONNECTION
 [Signature] 4/11/63

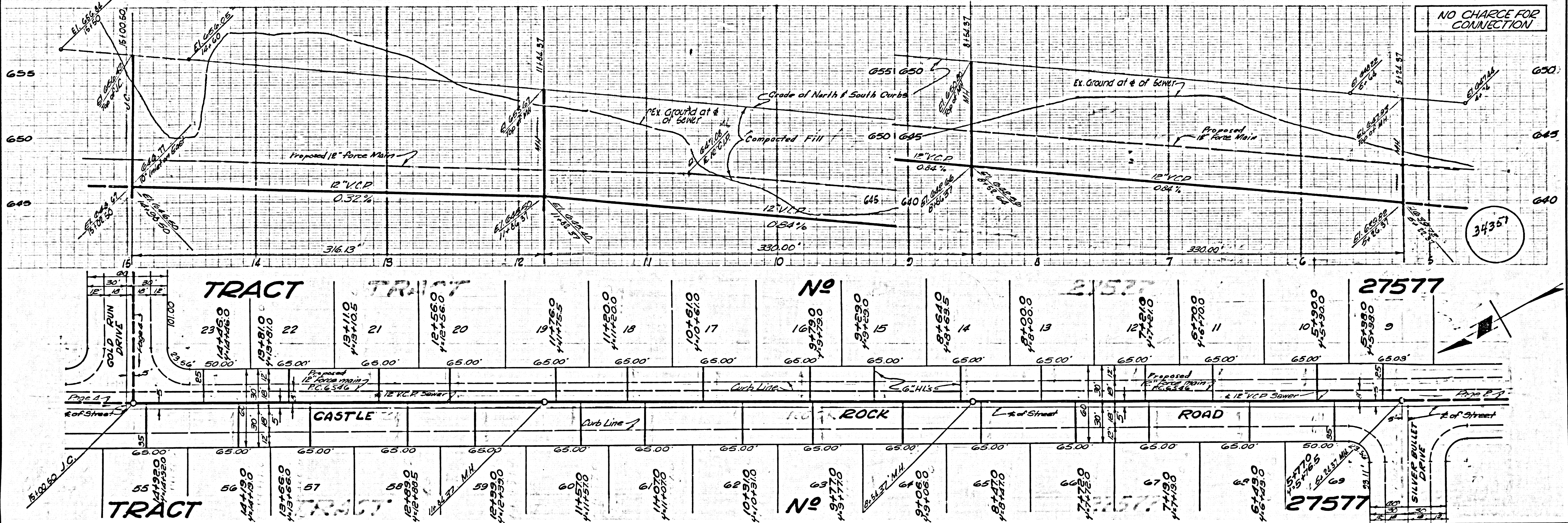
ISSUE NO HOUSE CONNECTION PERMITS UNTIL P.C. NO 6546 IS ACCEPTED



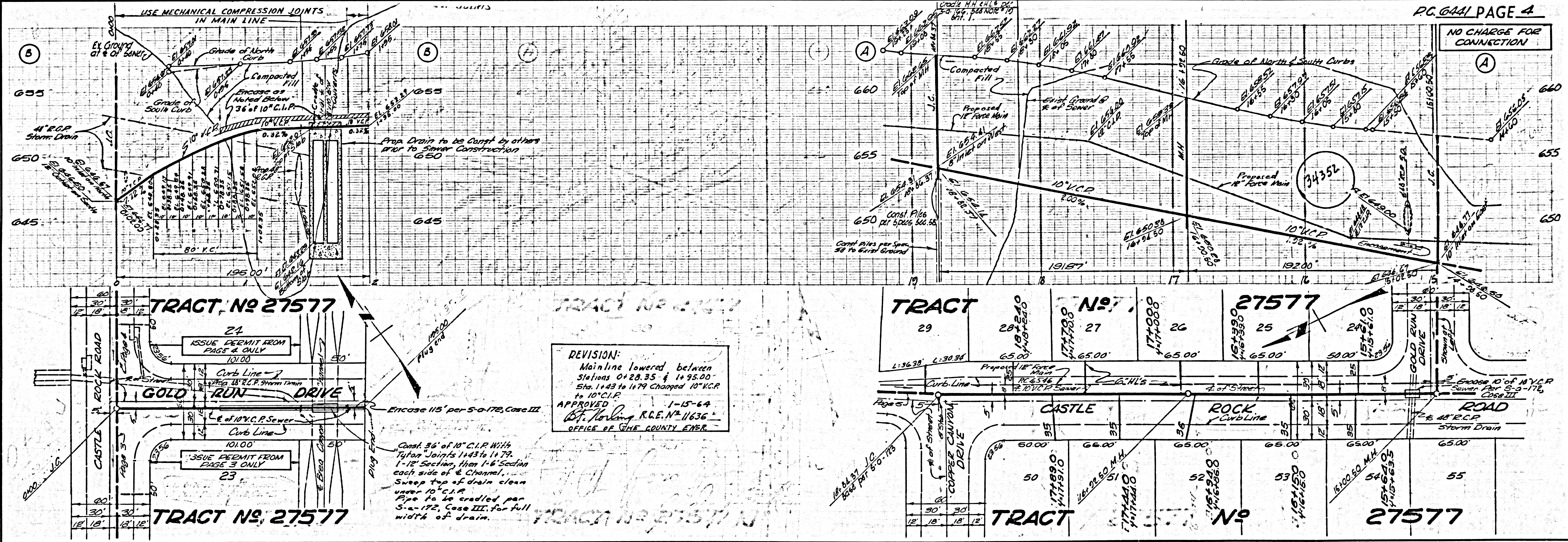
P.C. 6441 PAGE 2
 NO CHARGE FOR CONNECTION

34350

NO CHARGE FOR CONNECTION

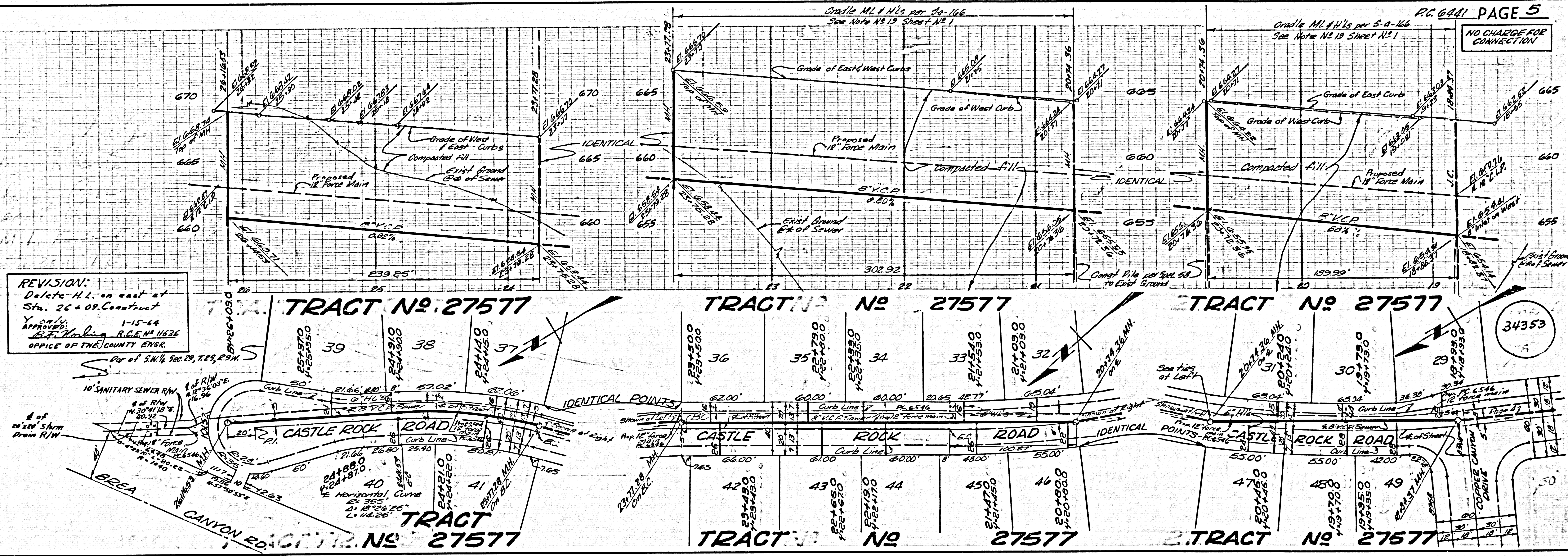


NO CHARGE FOR CONNECTION



REVISION:
Mainline lowered between
stations 0+28.35 & 1+55.00
Sta. 1+43 to 1+79 changed 10" V.C.P.
to 10" C.I.P.
APPROVED 1-15-64
C. F. Perkins R.E.N. 11636
OFFICE OF THE COUNTY ENGR.

NO CHARGE FOR CONNECTION



REVISION:
 Delete H.L. on east of Sta. 26+09. Construct Y only.
 1-15-64
 APPROVED: R.F. Harding R.I.G.E. # 11636
 OFFICE OF THE COUNTY ENGR.