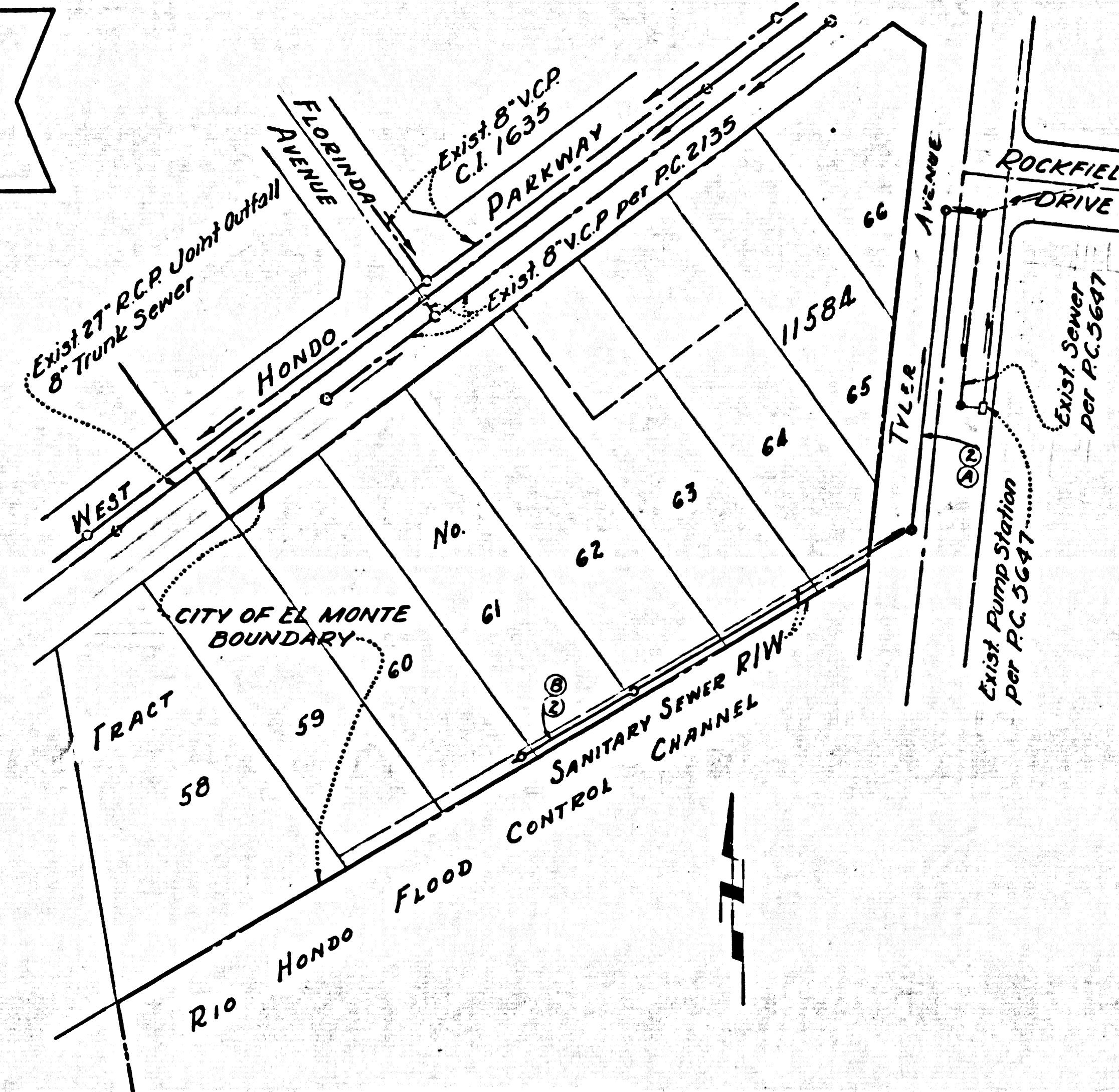


B.M. S.D. 602 ELEV. 298.858
 F.B. 2507 p. 10
 Rio Hondo River east wash at S. end of Double Dr. NW corner 100' W of center of wash 13.5' SE of piling and wire fence. Corp. of Engr. U.S. Army brass disk stamped R.L. 1928 in top of 6" concrete post 3" above ground.
 QUAD. 1922 Adj.



INDEX MAP
 Scale 1"=100'
 P.C. 6448

REVISION NOTE
 Add terminal manhole at sta. 3+24.71 and omit the manhole at 4+44.23
 approved [Signature]

COLLECT CHARGES AS INDICATED
 R. Pearce 3/27/63

NO CONNECTIONS FOR THE DISPOSAL OF INDUSTRIAL WASTES SHALL BE MADE TO SEWERS SHOWN ON THESE DRAWINGS WITHOUT WRITTEN PERMISSION FROM THE CHIEF ENGINEER AND GENERAL MANAGER OF THE COUNTY SANITATION DISTRICTS.

TEMPLE CITY BLDG. DIST. NO. 5

TO BE CONSTRUCTED IN

RIGHT OF WAY WEST OF TYLER AVENUE

PRIVATE CONTRACT NO. 6448

W.S. 46 A-3

1 SHEET 2 PAGES

SCALE: HORIZ. 1"=40' VERT. 1"=4'

JANUARY, 1963

PREPARED IN THE OFFICES OF
 J.H. EDWARDS CO.
 7711 176th St. DA 70543

REG. C. E. NO. 11302

FOR LEGEND SEE PLAN NO. S-64

33358

NOTE:
 GRADES TO WHICH THIS IMPROVEMENT IS TO BE CONSTRUCTED ARE SHOWN ON PLANS AND PROFILES. GRADE POINTS FOR TOP OF CURBS, CENTER LINE OF STREETS, OR CENTER LINE OF ALLEYS ARE SHOWN BY CIRCLES ON PROFILES. AT ALL POINTS BETWEEN DESIGNATED POINTS THE GRADE SHALL BE ESTABLISHED SO AS TO CONFORM TO A STRAIGHT LINE DRAWN BETWEEN SAID DESIGNATED POINTS. ELEVATIONS ARE IN FEET ABOVE U.S.C. & G.S. SEA LEVEL DATUM OF 1929.
 THIS DRAWING AND THE DATA HEREON ARE HEREBY MADE A PART OF THE SPECIFICATIONS.
 WORK SHALL BE CONSTRUCTED ACCORDING TO STANDARD SPECIFICATIONS DATED MAY 23, 1962, ON FILE IN THE OFFICE OF THE COUNTY ENGINEER AND SHALL BE PROSECUTED ONLY IN THE PRESENCE OF THE COUNTY ENGINEER.
 BEFORE WORK CAN BE STARTED, THE CONTRACTOR MUST OBTAIN A PERMIT TO EXCAVATE IN COUNTY STREETS FROM THE L.A. COUNTY ROAD DEPT., DISTRICT OFFICE NO. 1, AND PAY A FEE TO THE COUNTY ENGINEER, ROOM 300, COUNTY ENGINEER'S BUILDING, 100 WEST SECOND STREET OR SAN GABRIEL VALLEY REGIONAL OFFICE, SUFFICIENT TO COVER THE COST OF CONSTRUCTION INSPECTION AND RECORD PLANS.
 APPROVAL OF THIS PLAN BY THE COUNTY OF LOS ANGELES DOES NOT CONSTITUTE A REPRESENTATION AS TO THE ACCURACY OF THE LOCATION OR OF THE EXISTENCE OR NON-EXISTENCE OF ANY UNDERGROUND UTILITY PIPE, OR STRUCTURE WITHIN THE LIMITS OF THIS PROJECT. THIS NOTE APPLIES TO ALL PAGES.
 IF WORK IS TO BE DONE IN A STATE HIGHWAY, A PERMIT MUST BE OBTAINED FROM THE STATE OF CALIFORNIA, DIVISION OF HIGHWAYS, 120 SOUTH SPRING STREET, LOS ANGELES, CALIFORNIA.

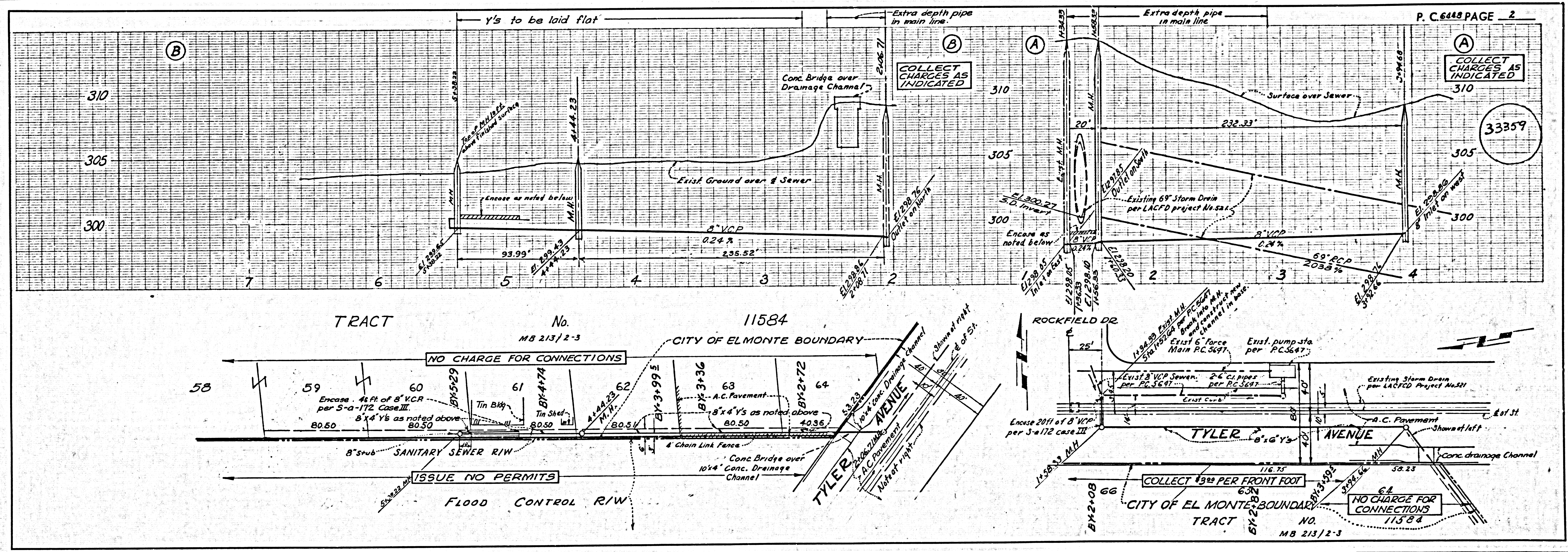
COUNTY OF LOS ANGELES, CALIFORNIA
 JOHN A. LAMBIE, COUNTY ENGINEER J. D. PARKHURST, CHIEF ENGINEER
 CO. SAN. DIST. NO. 15

APPROVED BY [Signature] ASSISTANT SANITATION ENGINEER APPROVED BY [Signature] OFFICE ENGINEER

SUBMITTED BY [Signature] REGIONAL ENGINEER

CHECKED BY [Signature] NO. C.E. NO. 3402

CITY OF EL MONTE
 APPROVED BY [Signature] DATE 4-11-63 J.N. 0359.60
 CITY ENGINEER



COLLECT CHARGES AS INDICATED

33359